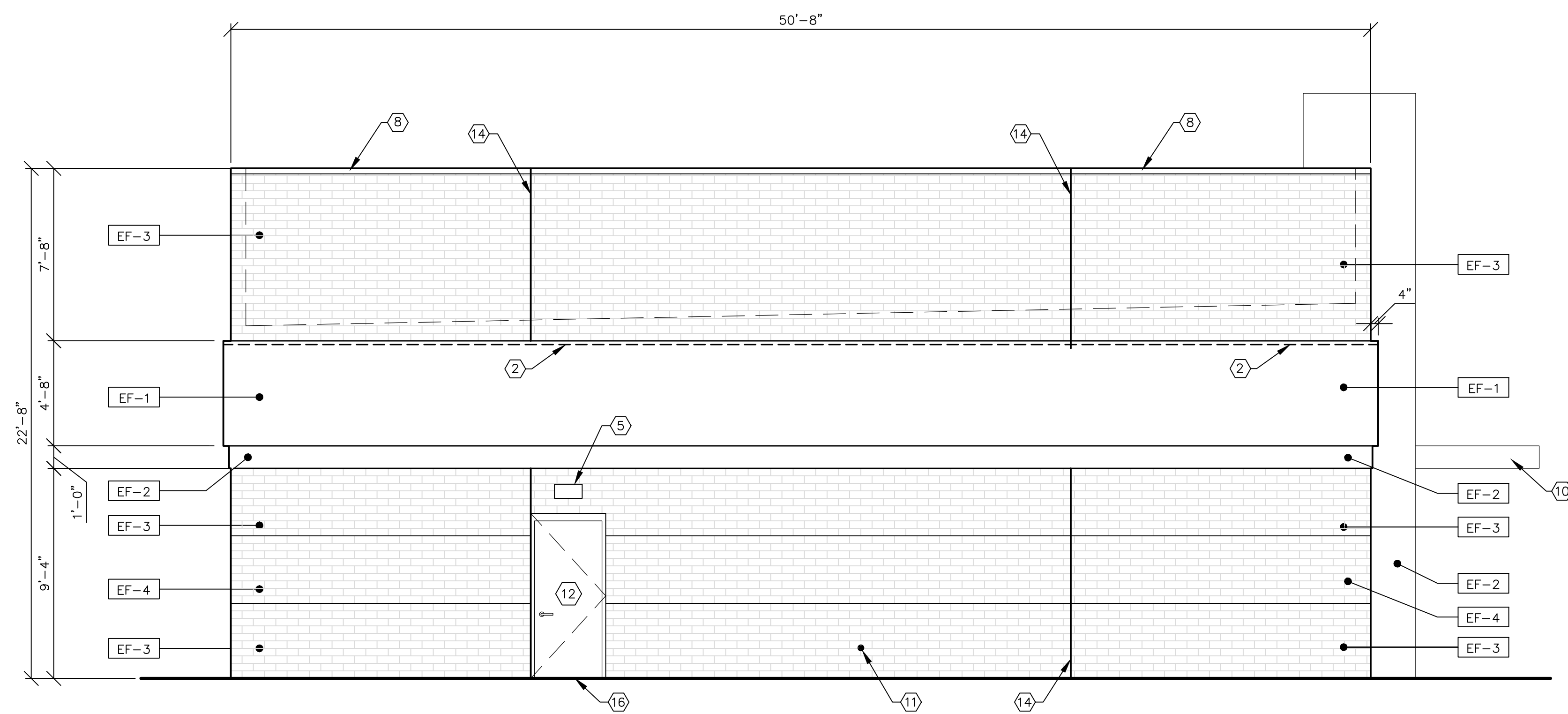


1 EXTERIOR ELEVATION, FRONT
SCALE: 1/4" = 1'-0"



2 EXTERIOR ELEVATION, LEFT
SCALE: 1/4" = 1'-0"

GENERAL NOTES:

- A. HOLLOW METAL DOORS AND FRAMES TO BE PRE-FINISHED TO MATCH MASONRY.
- B. ALL EXTERIOR DOOR HARDWARE TO MATCH CLEAR ANODIZED.
- C. ANY PRODUCTS PROPOSED FOR SUBSTITUTION ARE TO BE SELECTED BASED UPON AVAILABILITY AND ARE REQUIRED TO MATCH APPROVED MATERIALS IN COLOR, FINISH AND QUALITY. CONSULT OWNER'S REPRESENTATIVE AND SUBMIT SAMPLES FOR ANY AND ALL SUBSTITUTIONS. OWNER'S REP. WILL CONSULT WITH CITY AUTHORITIES FOR ACCEPTANCE OF SUBSTITUTIONS AND ADVISE SUPPLYING CONTRACTOR PRIOR TO INSTALLATION OF ANY WORK.
- D. ALL SIGNAGE DEPICTED ON ELEVATIONS ARE TO BE PERMITTED UNDER A SEPARATE SUBMITTAL AND PERMIT WITH THE CITY.

KEY NOTES:

- 1 CUSTOM CONTINUOUS GRAPHICS PROVIDED AND INSTALLED BY CHUTE GERDEMAN.
- 2 CUSTOM CONTINUOUS EXTERIOR LED COVE LIGHT/WALL WASHER FIXTURE [SL-2]. REFER TO LIGHTING SCHEDULE SHEET E-2.1.
- 3 EXTERIOR WALL SCONCE. REFER TO ELECTRICAL DRAWINGS AND LIGHTING SCHEDULE SHEET E-2.1.
- 4 MURPHY'S EXTERIOR MOUNTED DIMENSION SIGNAGE - REFER TO GRAPHIC DESIGN INTENT SET. PROVIDED AND INSTALLED BY SIGN CONTRACTOR.
- 5 WALL MOUNTED EXTERIOR SCONCE LIGHTING AT 8'-0" A.F.F. TO BOTTOM OF FIXTURE. SEE PHOTOMETRIC DRAWINGS FOR SCONCE LIGHTING SPECIFICATIONS.
- 6 CURTAIN WALL SYSTEM WITH BUTT JOINTED 1" INSULATED TEMPERED GLASS. ALL COMPONENTS AND DOORS TO BE CLEAR ANODIZED FINISH. PROVIDED AND INSTALLED BY G.C.
- 7 EXTERIOR ELECTRICAL RECEPTACLE IN WATERPROOF BOX. SEE ELECTRICAL DRAWINGS.
- 8 CAP FLASHING OVER MASONRY WALL: PAINT SW#7689 "ROW HOUSE TAN"
- 9 FUEL EMERGENCY STOP BUTTON AND SIGN
- 10 PRE-ENGINEERED AND PRE-FINISHED METAL PANEL AWNING BY MURPHY VENDOR.
- 11 HOSE BIB, 18" A.F.F. SEE PLUMBING DRAWINGS
- 12 HOLLOW METAL DOOR, PAINT TO MATCH ADJACENT MASONRY.
- 13 STOREFRONT SYSTEM WITH 1" INSULATED TEMPERED GLASS. ALL COMPONENTS AND DOORS TO BE CLEAR ANODIZED FINISH. PROVIDED AND INSTALLED BY G.C.
- 14 CONTROL JOINT
- 15 WALL HUNG FIRE EXTINGUISHER, ANSUL C20 # 429017
- 16 6" ALUMINUM FLUTED TOP SADDLE THRESHOLD BY PEMCO. 1/4" HIGH. LENGTH TO FIT DOOR OPENING.

MATERIAL SCHEDULE:

SYMBOL	DESCRIPTION
EF-1	PREFINISHED METAL PANELS, ALCOA, REYNOBOND #4 ("BRUSHED NATURAL ALUMINUM"). SUPPLIED AND INSTALL BY FREYMOSS.
EF-2	PREFINISHED METAL PANELS, 3A COMPOSITES, ALUCOBOND PE PMS 485C RED, ("PROGRAM RED"). SUPPLIED & INSTALLED BY FREYMOSS
EF-3	STRUCTURAL BRICK, 8x4x16 "TUMBLEWEED" BY INTERSTATE BRICK
EF-4	STRUCTURAL BRICK, 8x4x16 "DESERT SAND" BY INTERSTATE BRICK

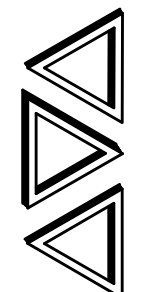
SHEET NO.

A2.0

EXTERIOR ELEVATIONS

MURPHY EXPRESS
3751 STATE HWY. 528 NW
ALBUQUERQUE NEW MEXICO

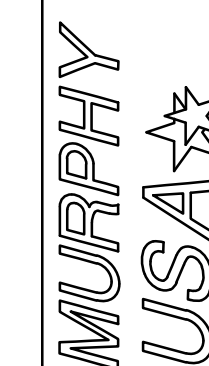
PAE JOB NO. 10951



PAN AMERICAN ENGINEERS, LLC
P.O. BOX 88 / 1717 JACKSON STREET
ALEXANDRIA, LA. 71309
(504) 475-2100
CONTACT: RON BORDELON

MURPHY OIL USA, INC.

200 PEACH STREET
EL DORADO, AR 71731-7000



GENERAL NOTES:

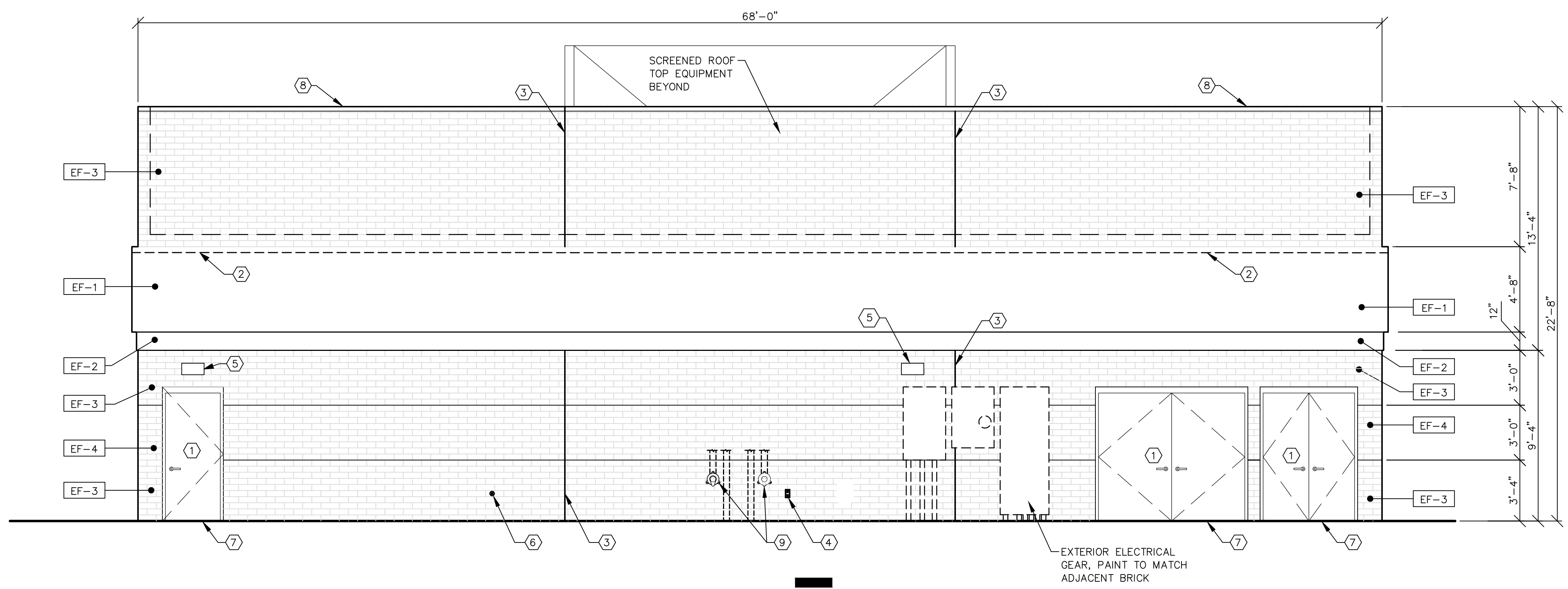
- A. HOLLOW METAL DOORS AND FRAMES TO BE PRE-FINISHED TO MATCH MASONRY.
- B. ALL EXTERIOR DOOR HARDWARE TO MATCH CLEAR ANODIZED.
- C. ANY PRODUCTS PROPOSED FOR SUBSTITUTION ARE TO BE SELECTED BASED UPON AVAILABILITY AND ARE REQUIRED TO MATCH APPROVED MATERIALS IN COLOR, FINISH AND QUALITY. CONSULT OWNER'S REPRESENTATIVE AND SUBMIT SAMPLES FOR ANY AND ALL SUBSTITUTIONS. OWNER'S REP. WILL CONSULT WITH CITY AUTHORITIES FOR ACCEPTANCE OF SUBSTITUTIONS AND ADVISE SUPPLYING CONTRACTOR PRIOR TO INSTALLATION OF ANY WORK.
- D. ALL SIGNAGE DEPICTED ON ELEVATIONS ARE TO BE PERMITTED UNDER A SEPARATE SUBMITTAL AND PERMIT WITH THE CITY.

KEY NOTES:

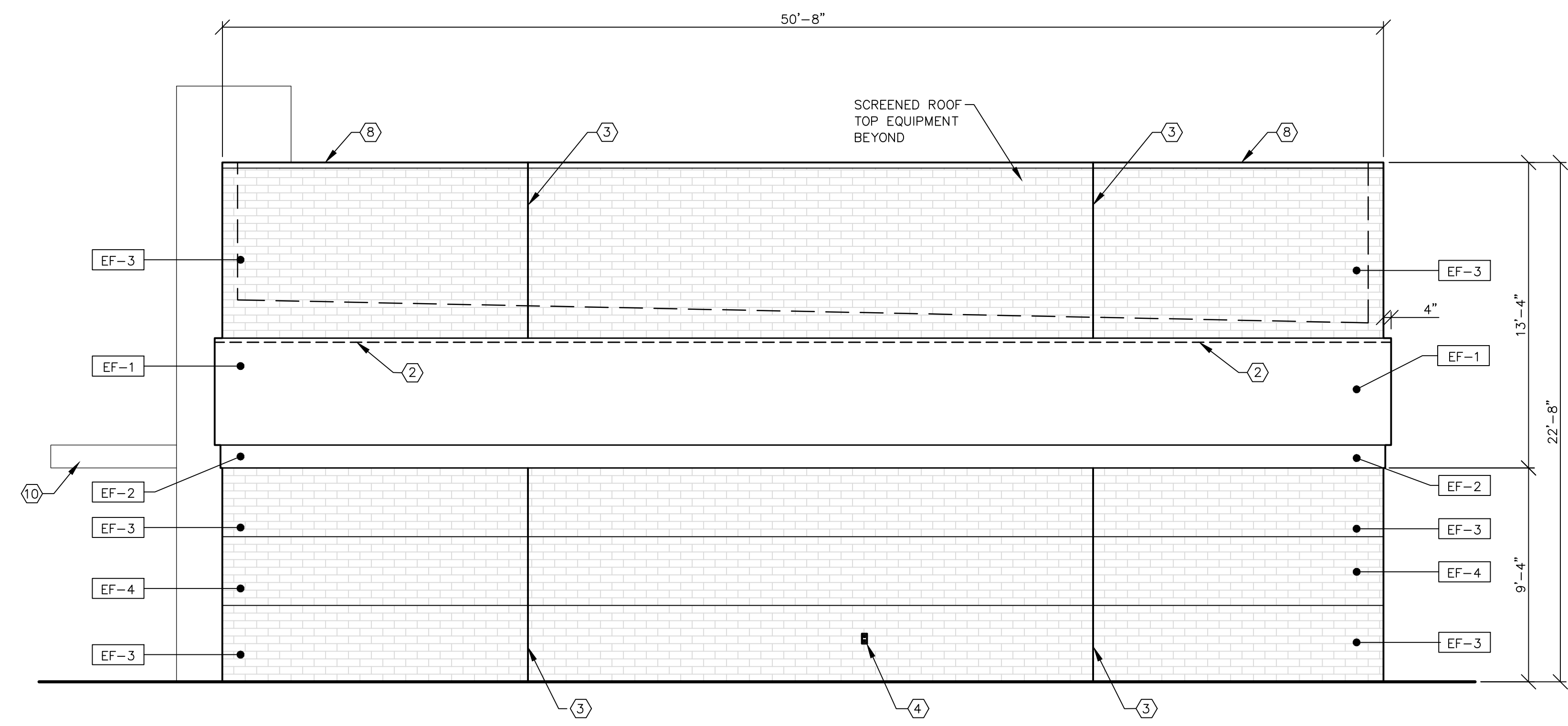
- ① HOLLOW METAL DOOR, PAINT TO MATCH ADJACENT MASONRY.
- ② CUSTOM CONTINUOUS EXTERIOR LED COVE LIGHT/WALL WASHER FIXTURE [SL-2]. REFER TO LIGHTING SCHEDULE SHEET E-2.1.
- ③ CONTROL JOINT
- ④ EXTERIOR ELECTRICAL RECEPTACLES IN WATERPROOF BOXES. FOR EXTERIOR ACCESSORIES, SEE ELECTRICAL DRAWINGS.
- ⑤ WALL MOUNTED EXTERIOR SCENCE LIGHTING AT 8'-0" A.F.F. TO BOTTOM OF FIXTURE. SEE PHOTOMETRIC DRAWINGS FOR SCENCE LIGHTING SPECIFICATIONS.
- ⑥ HOSE BIB, 18" A.F.F. SEE PLUMBING DRAWINGS
- ⑦ 6" ALUMINUM FLUTED TOP SADDLE THRESHOLD BY PEMCO. 1/4" HIGH. LENGTH TO FIT DOOR OPENING.
- ⑧ CAP FLASHING OVER MASONRY WALL: PAINT SW#7689 "ROW HOUSE TAN"
- ⑨ ROOF DRAIN ACCESSORY, (DOWNSPOUT NOZZLE), FOR LOCATION RE: 2/A1.4
- ⑩ PRE-ENGINEERED AND PRE-FINISHED METAL PANEL AWNING BY MURPHY VENDOR.

MATERIAL SCHEDULE:

SYMBOL	DESCRIPTION
EF-1	PREFINISHED METAL PANELS, ALCOA, REYNOBOND #4 ("BRUSHED NATURAL ALUMINUM"). SUPPLIED AND INSTALL BY FREYMOSS.
EF-2	PREFINISHED METAL PANELS, 3A COMPOSITES, ALUCOBOND PE PMS 485C RED, ("PROGRAM RED"). SUPPLIED & INSTALLED BY FREYMOSS
EF-3	STRUCTURAL BRICK, 8x4x16 "TUMBLEWEED" BY INTERSTATE BRICK
EF-4	STRUCTURAL BRICK, 8x4x16 "DESERT SAND" BY INTERSTATE BRICK



1 EXTERIOR ELEVATION, REAR
 SCALE: 1/4" = 1'-0"



2 EXTERIOR ELEVATION, RIGHT
 SCALE: 1/4" = 1'-0"