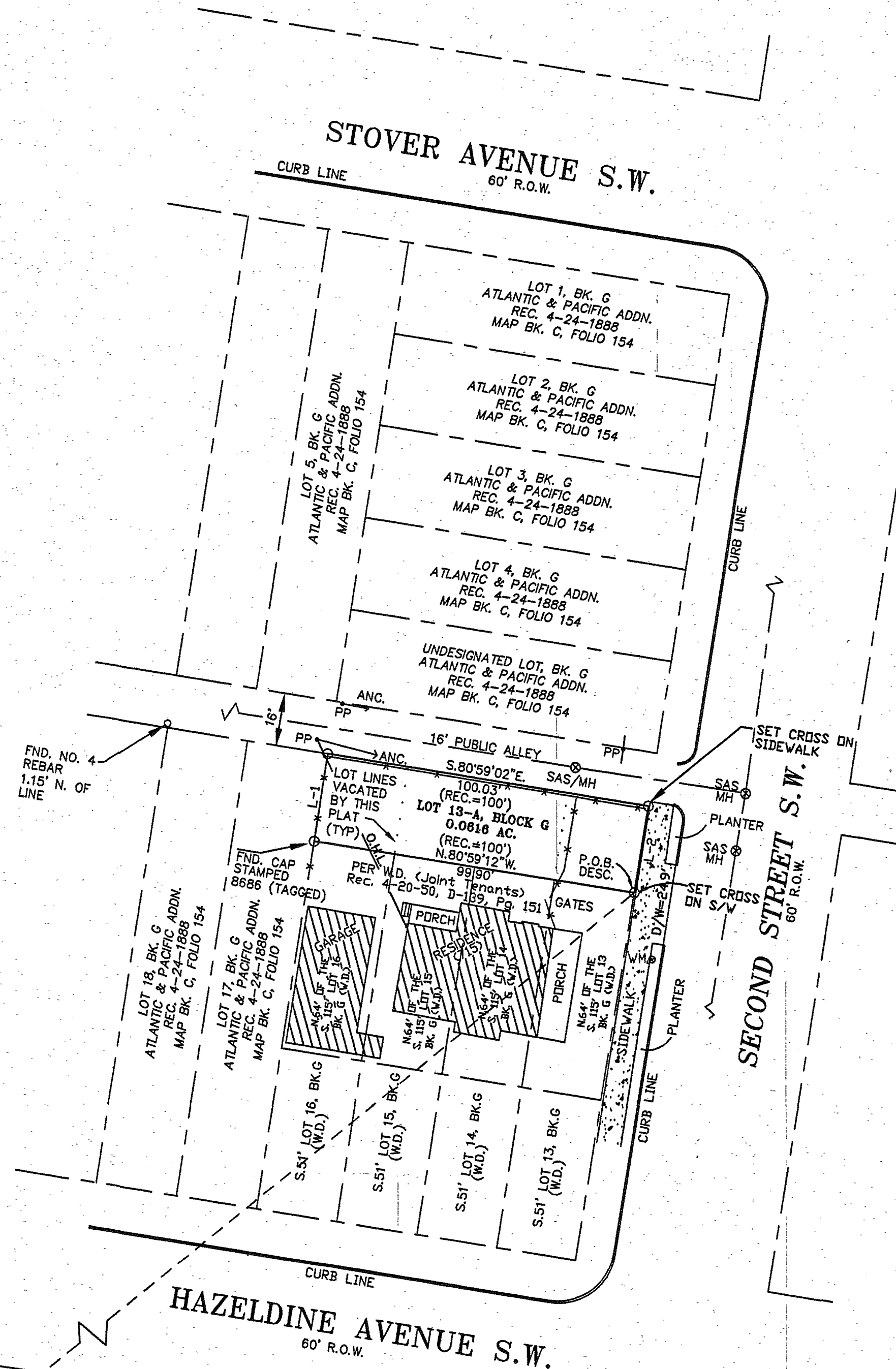
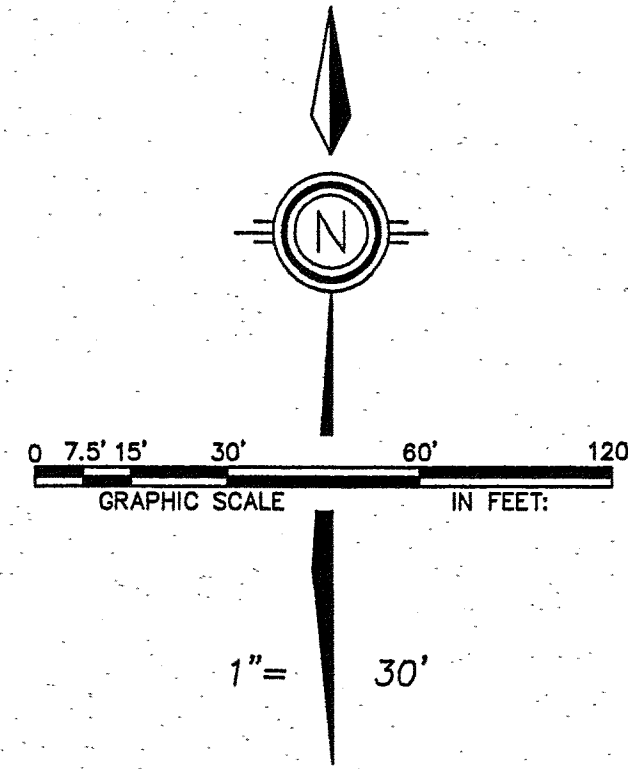


PLAT OF  
 LOT 13-A, BLOCK G  
 PLAT OF THE  
 ATLANTIC & PACIFIC ADDITION  
 (BEING A REPLAT OF THE NORTH 27 FEET)  
 (LOTS 13 THRU 16)  
 SITUATE WITHIN  
 TOWN OF ALBUQUERQUE GRANT  
 PROJ. SEC. 20, T10N., R3E., N.M.P.M.  
 TO THE CITY OF  
 ALBUQUERQUE  
 BERNALILLO COUNTY, NEW MEXICO

SEPTEMBER 2017



LINE TABLE		
LINE	BEARING	DISTANCE
L1	FIELD = N.09°07'01"E.	26.87' (REC. = 27')
L2	FIELD = S.09°17'38"W.	26.87' (REC. = 27')

DATE: 4-17-17	DRAWN BY: R.H.	
SHEET: 2 OF 2	CHECKED BY: T.H.	JOB NO. 17-417
REVISIONS: 7-10-17	REVISIONS: 8-31-17	
REVISIONS: 1-12-18	REVISIONS:	

A.C.S. MONUMENT STA. 9-L13  
 NORTHING (US survey feet): 1480911.429  
 EASTING (US survey feet): 1516927.103  
 G/G FACTOR = 0.999684383  
 DELTA ALPHA = -00.14\_13.68  
 NAD 83  
 CENTRAL ZONE  
 ELEVATION = 4954.41 (US survey feet)  
 NAVD 1988

DOCH 2018005585  
 8/15/2018 12:21 PM Page: 2 of 2  
 PLAT R: \$25.00 B: 2018C P: 0005 Linda Stover, Bernalillo County