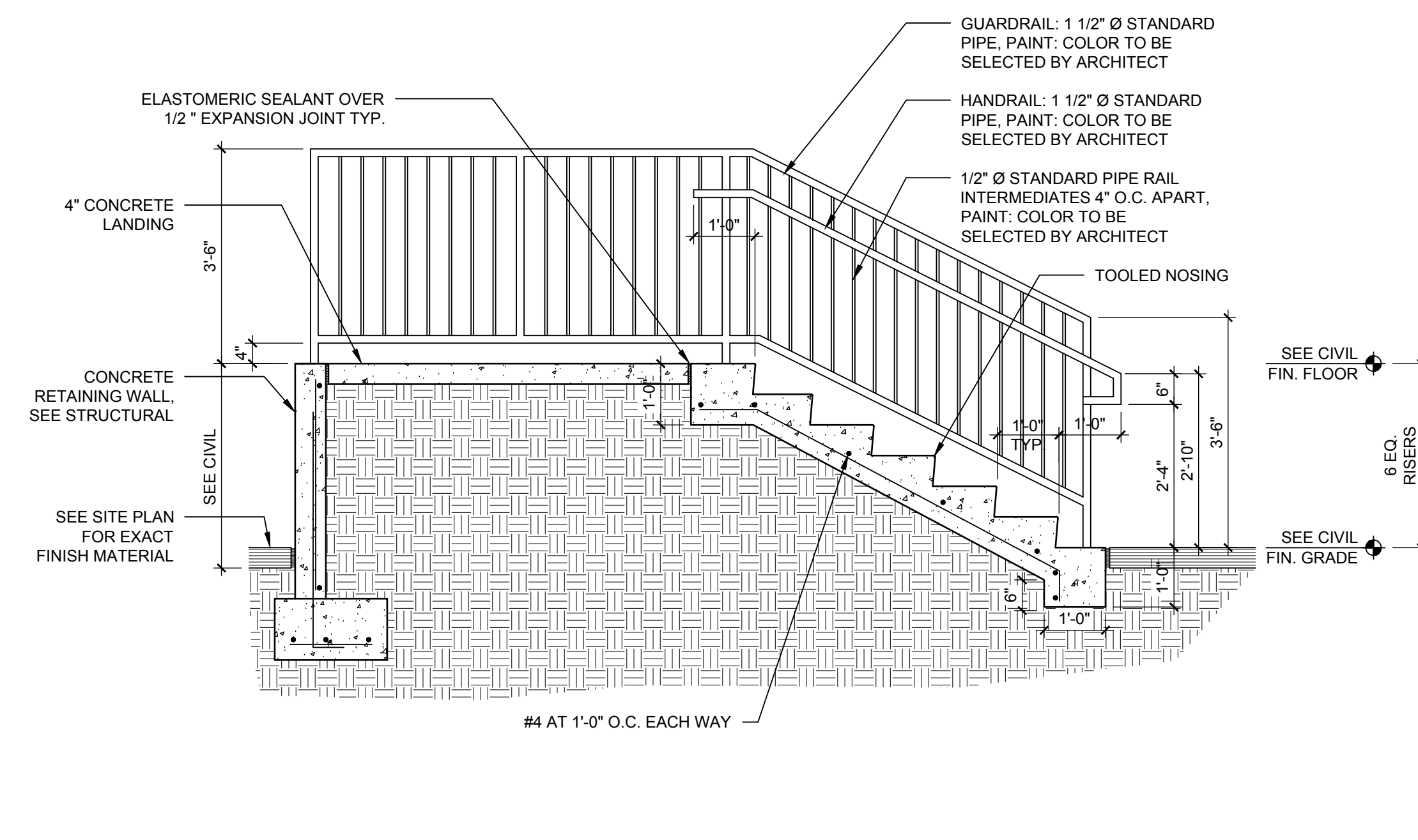
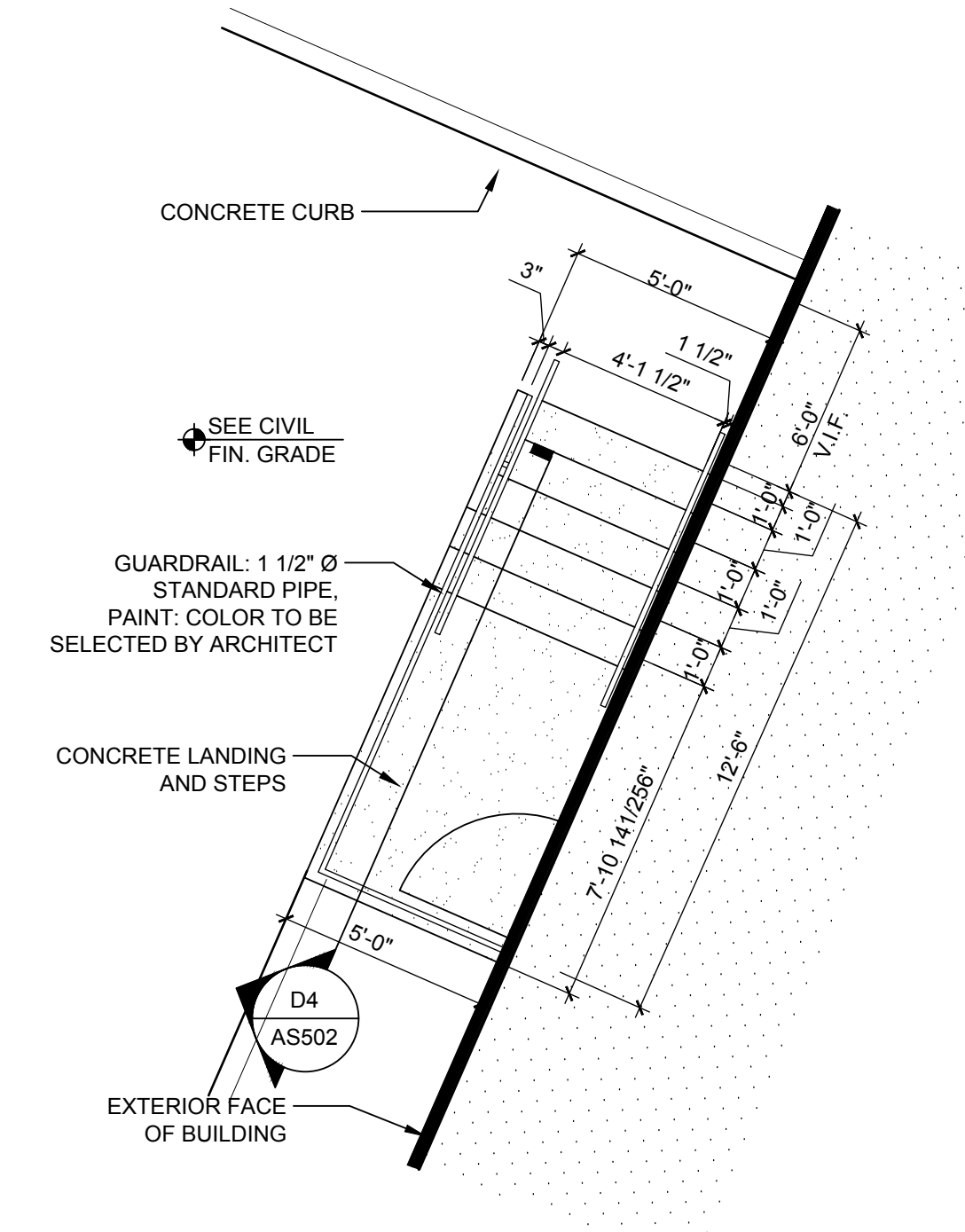


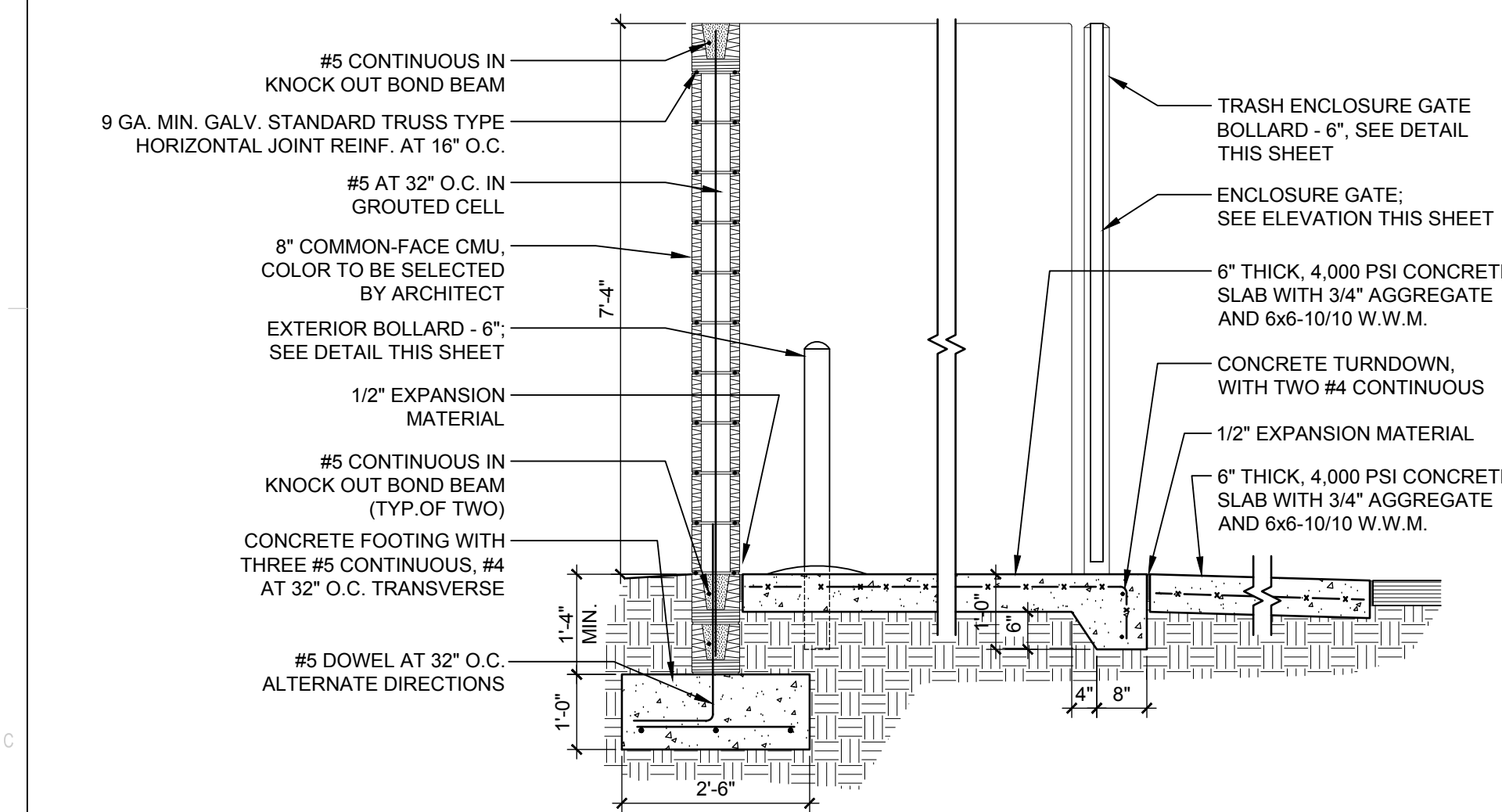
D1 SOUTH DOCK and STAIR 1/2" = 1'-0"



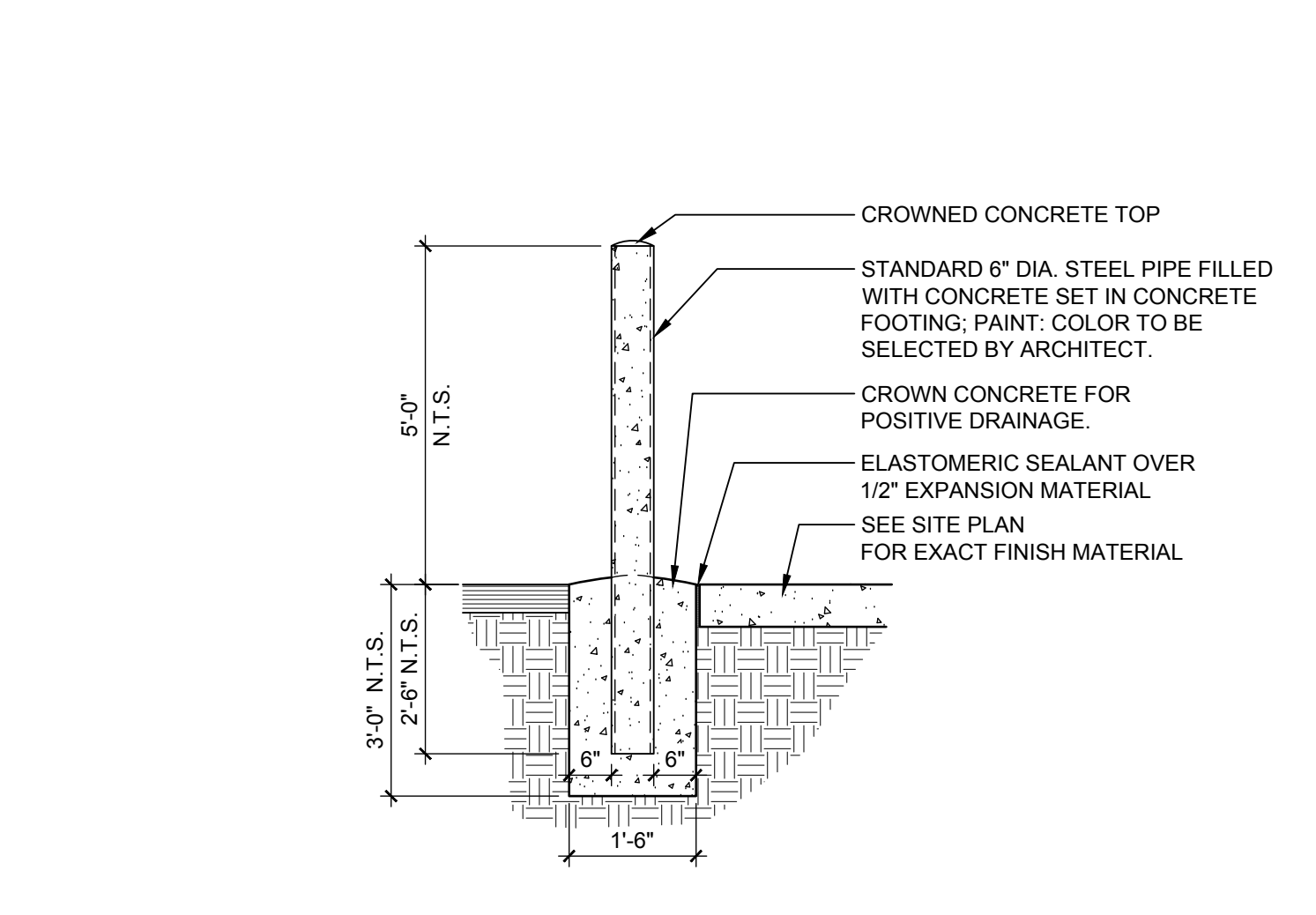
D4 WEST STAIR 1/2" = 1'-0"



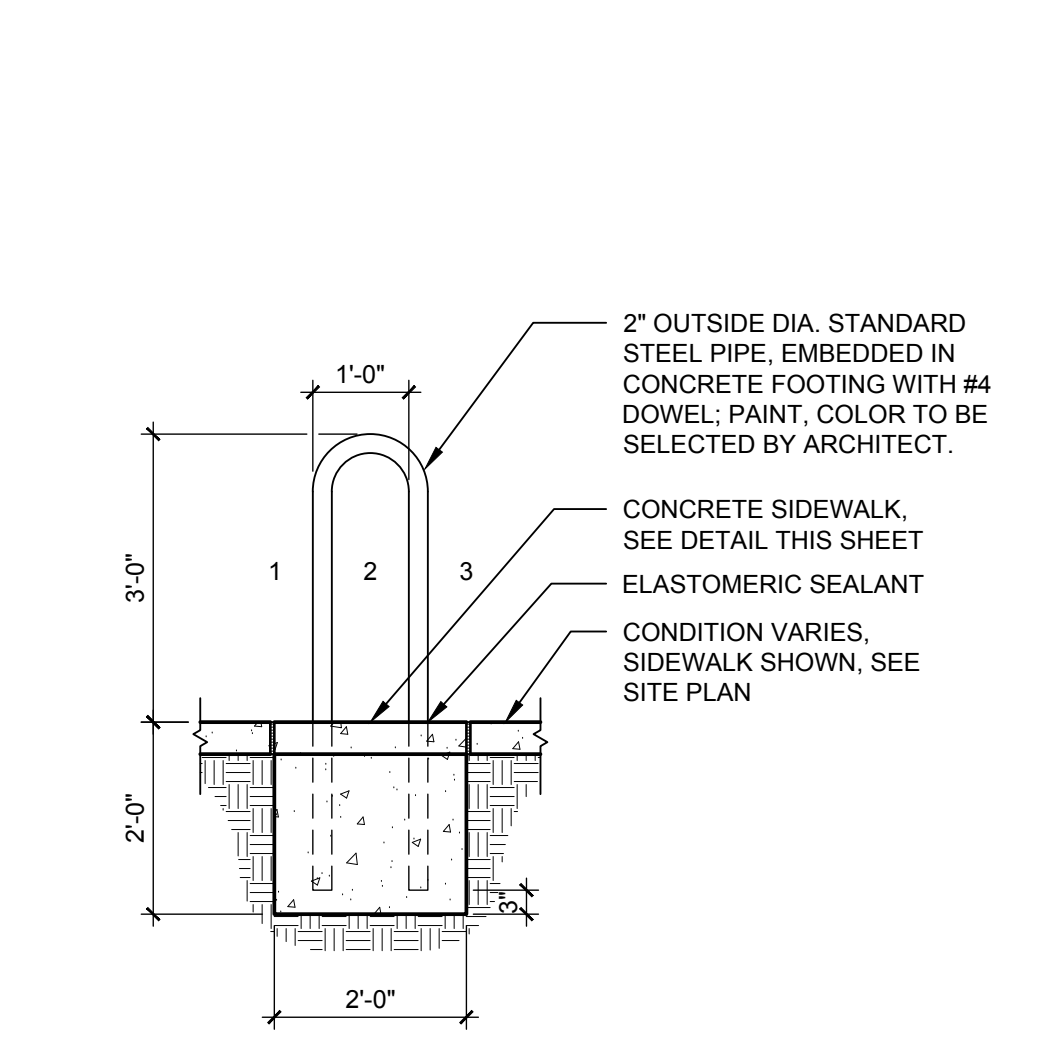
D6 WEST STAIR 1/4" = 1'-0"



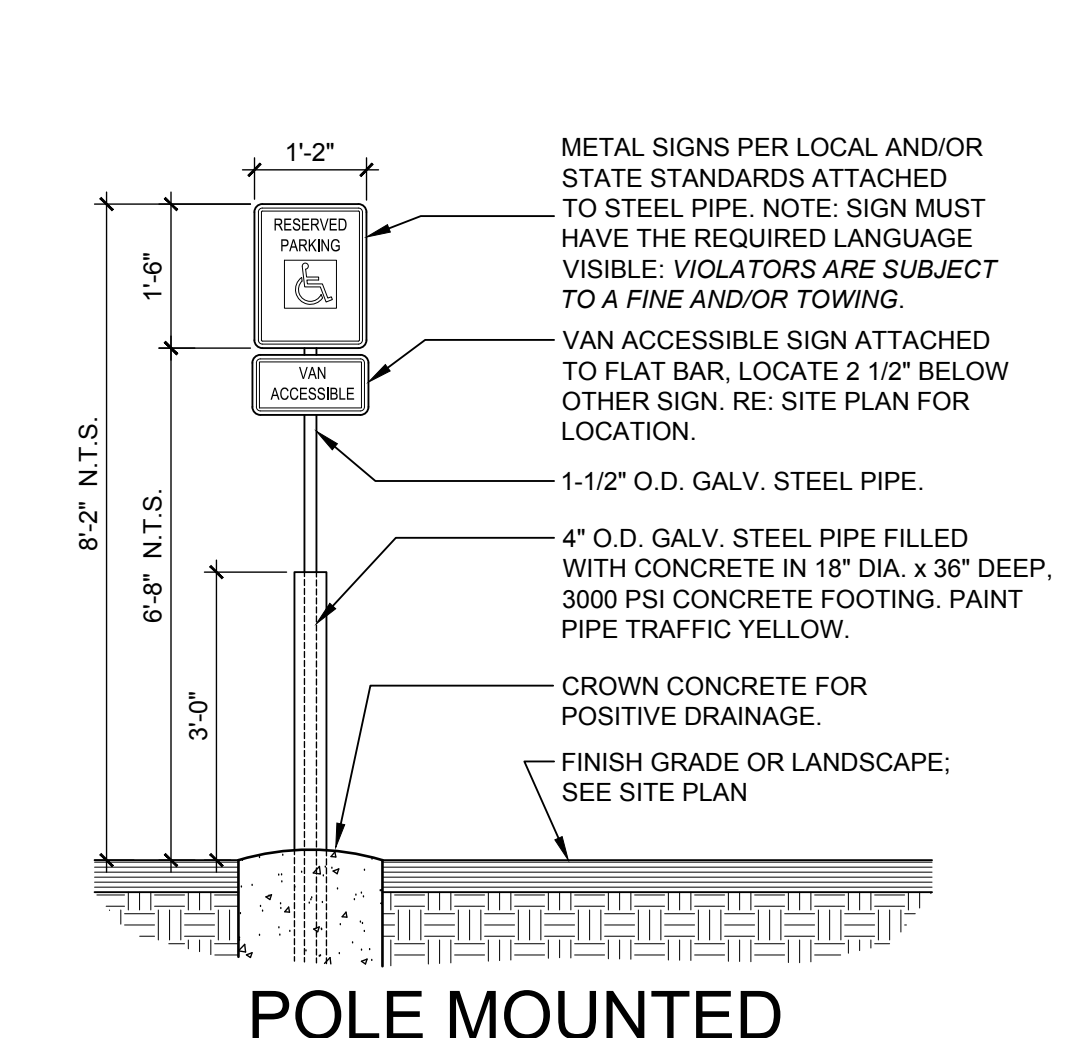
C1 TRASH ENCLOSURE CMU WALL and GATE 1/2" = 1'-0"



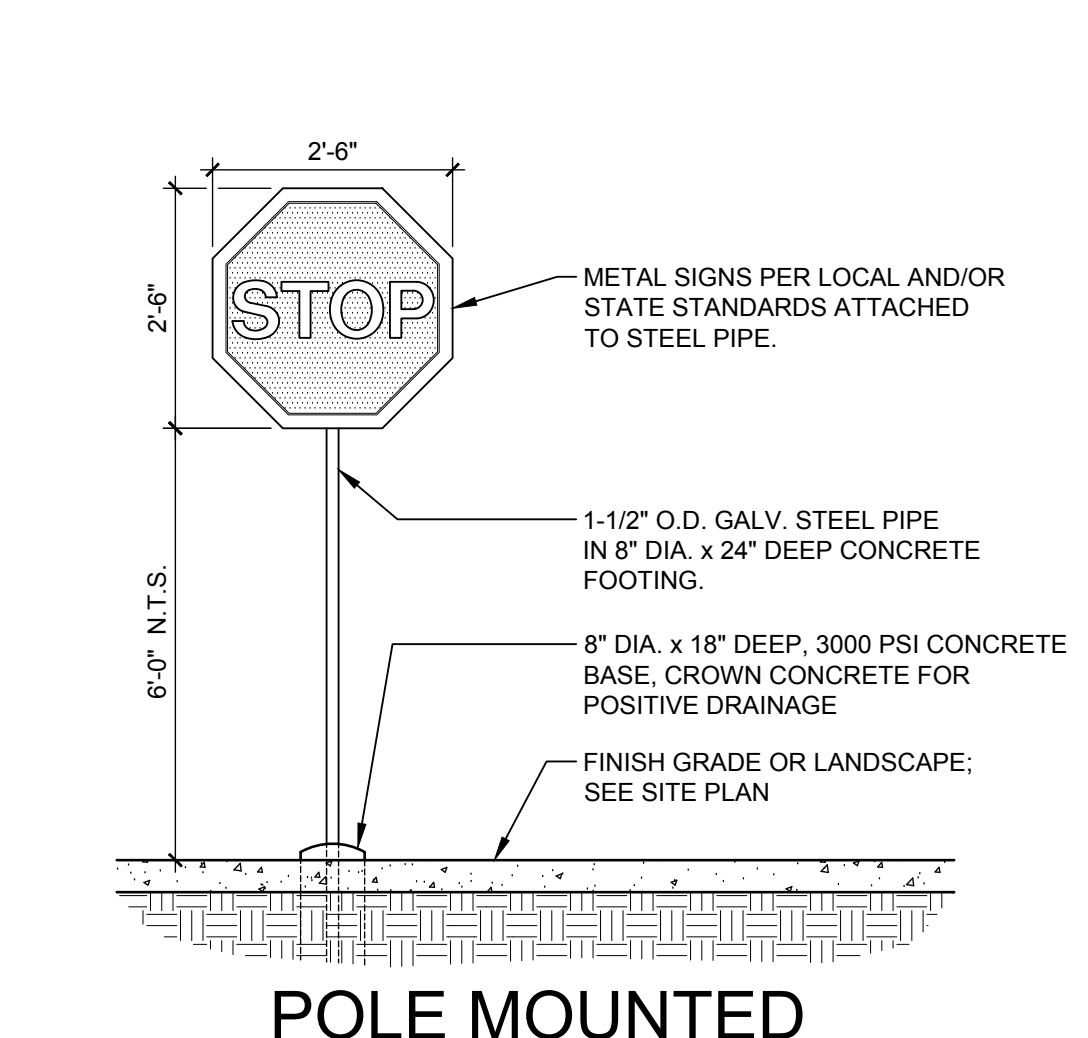
C3 EXTERIOR BOLLARD - 6" 1/2" = 1'-0"



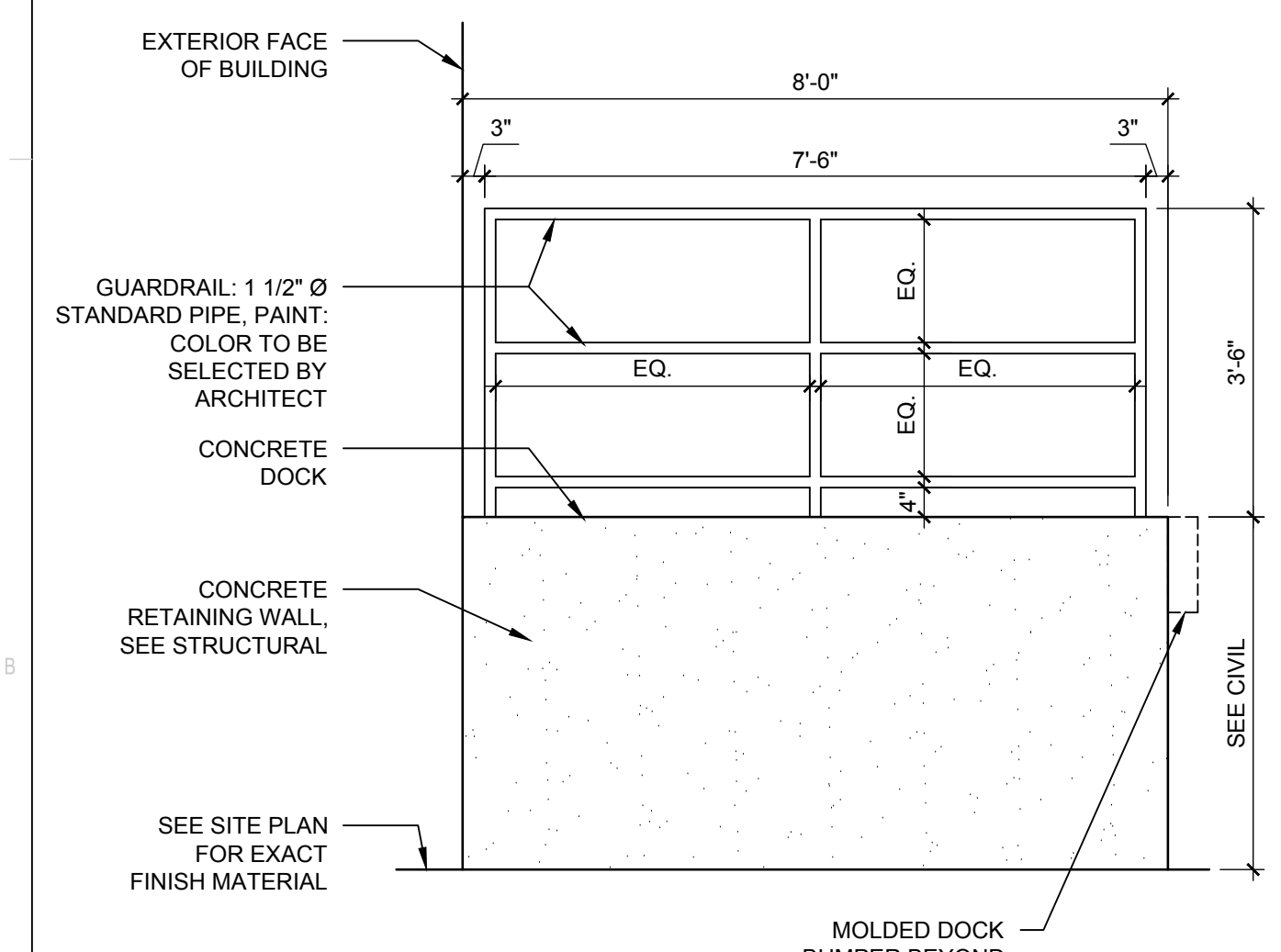
C4 BICYCLE RACK 1/2" = 1'-0"



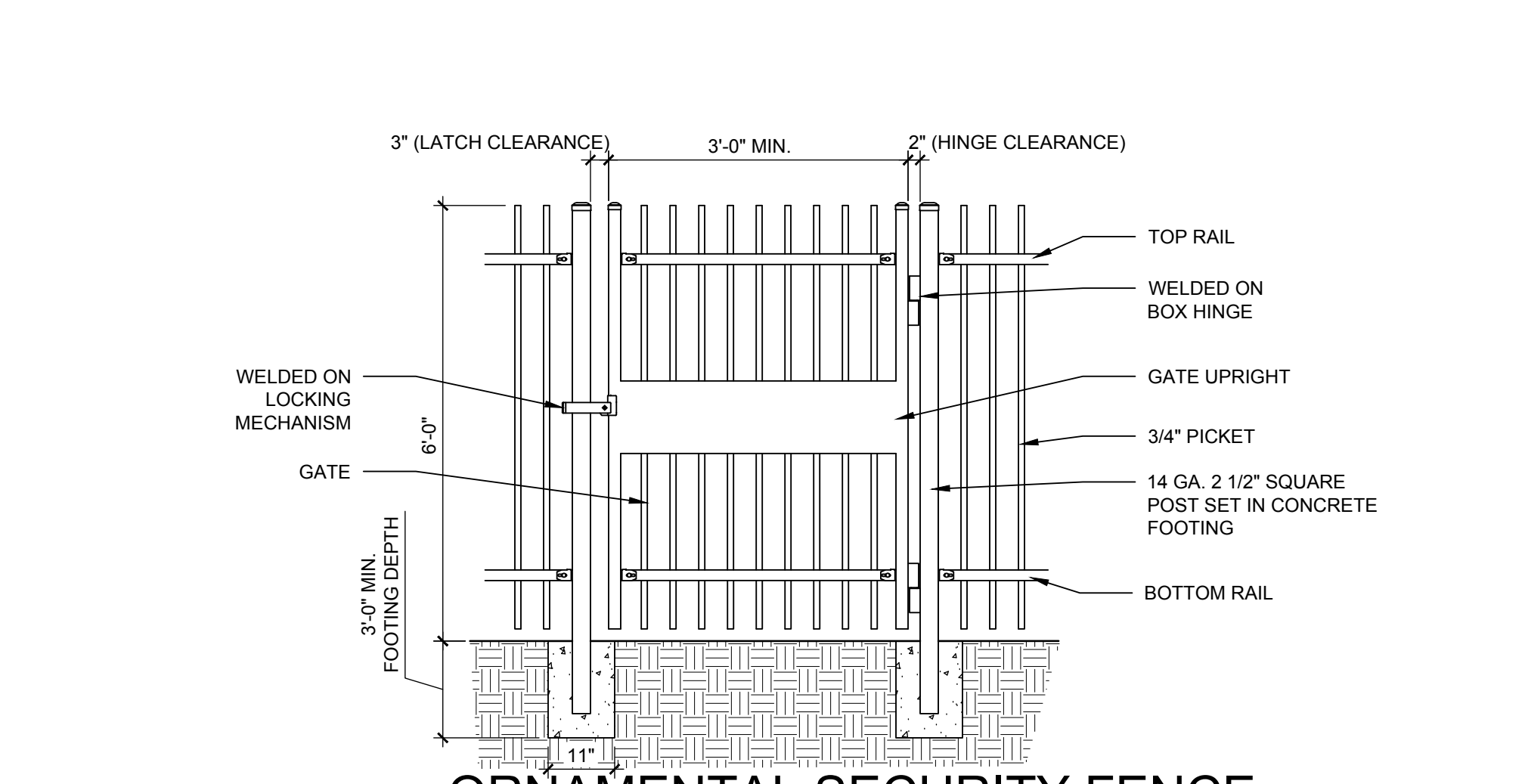
C5 POLE MOUNTED H.C. SIGN (VAN) 1/2" = 1'-0"



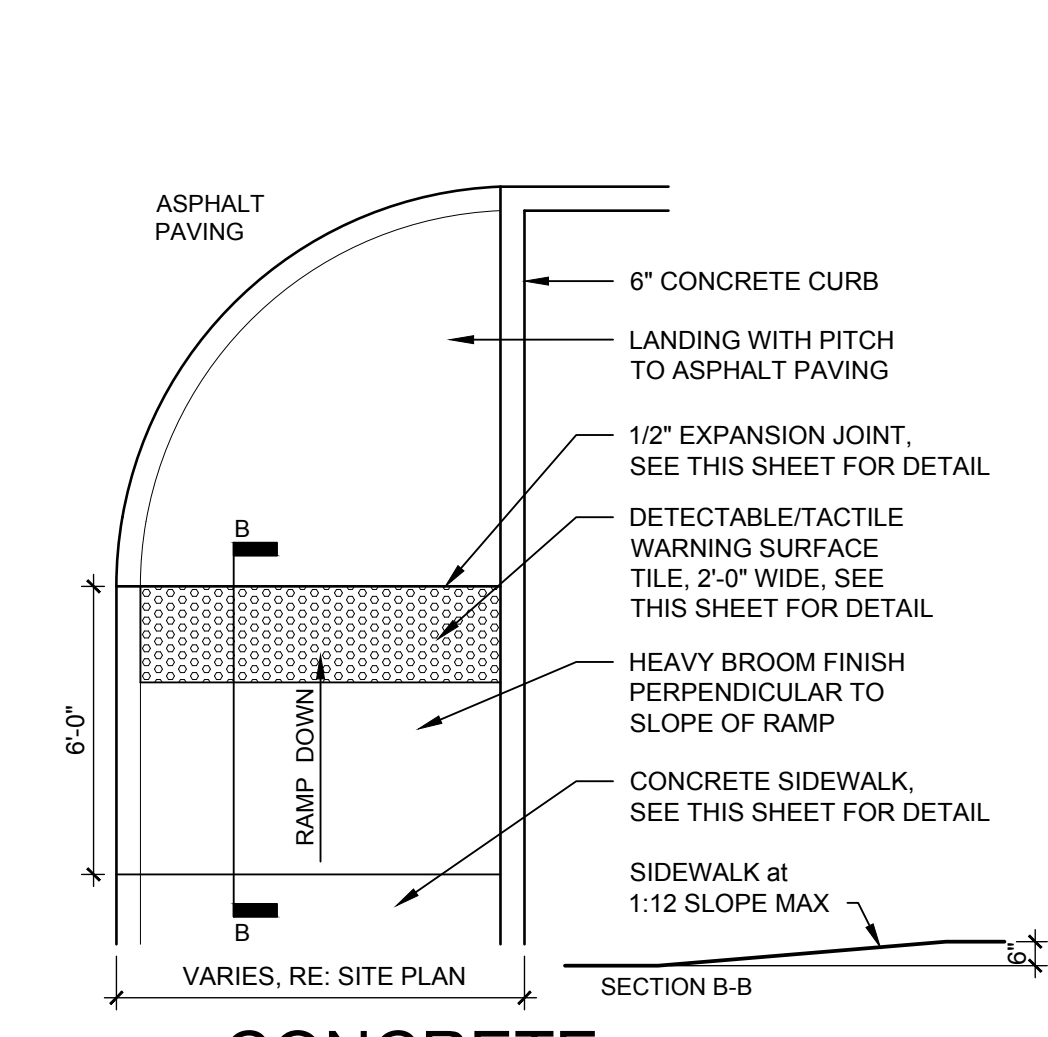
C6 POLE MOUNTED STOP SIGN 1/2" = 1'-0"



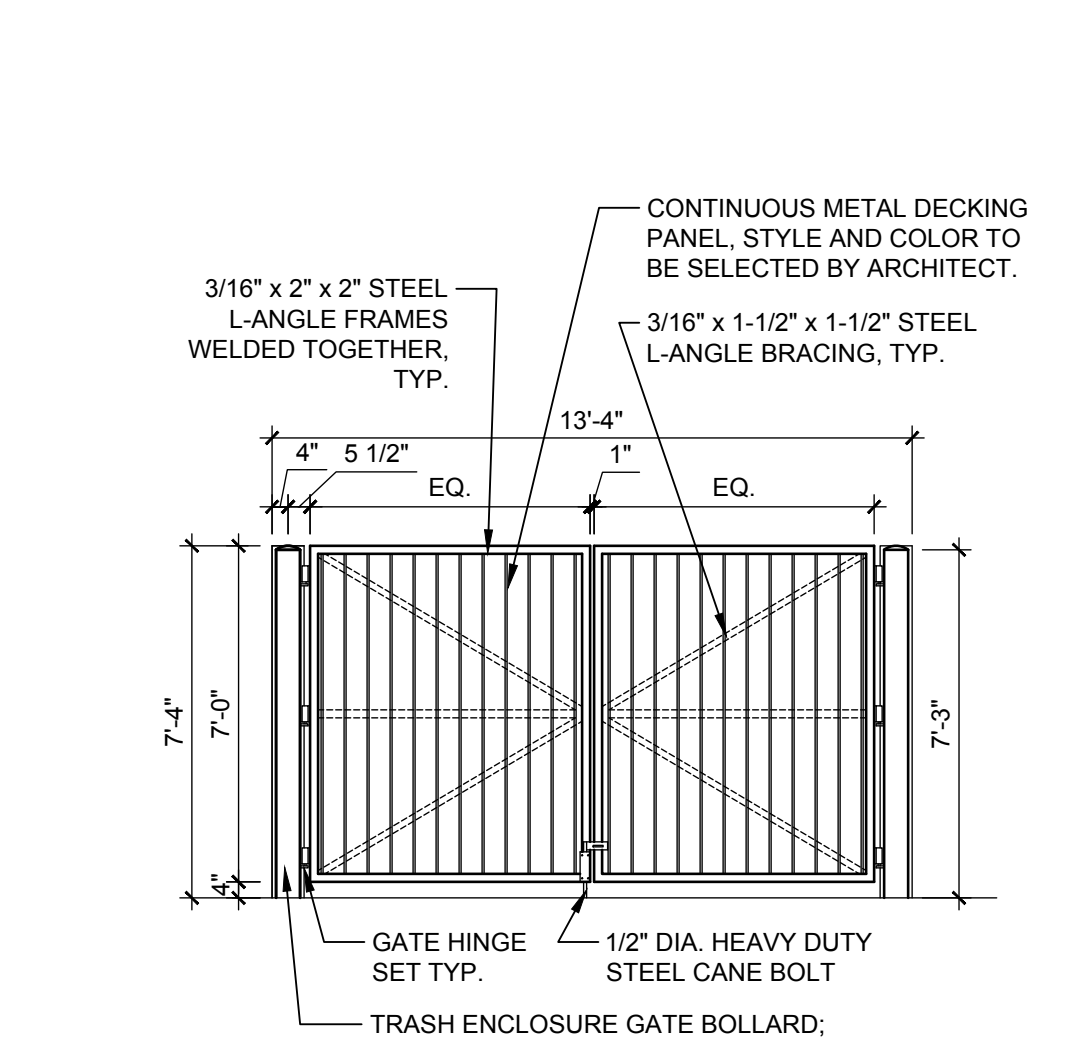
B1 SOUTH DOCK 1/2" = 1'-0"



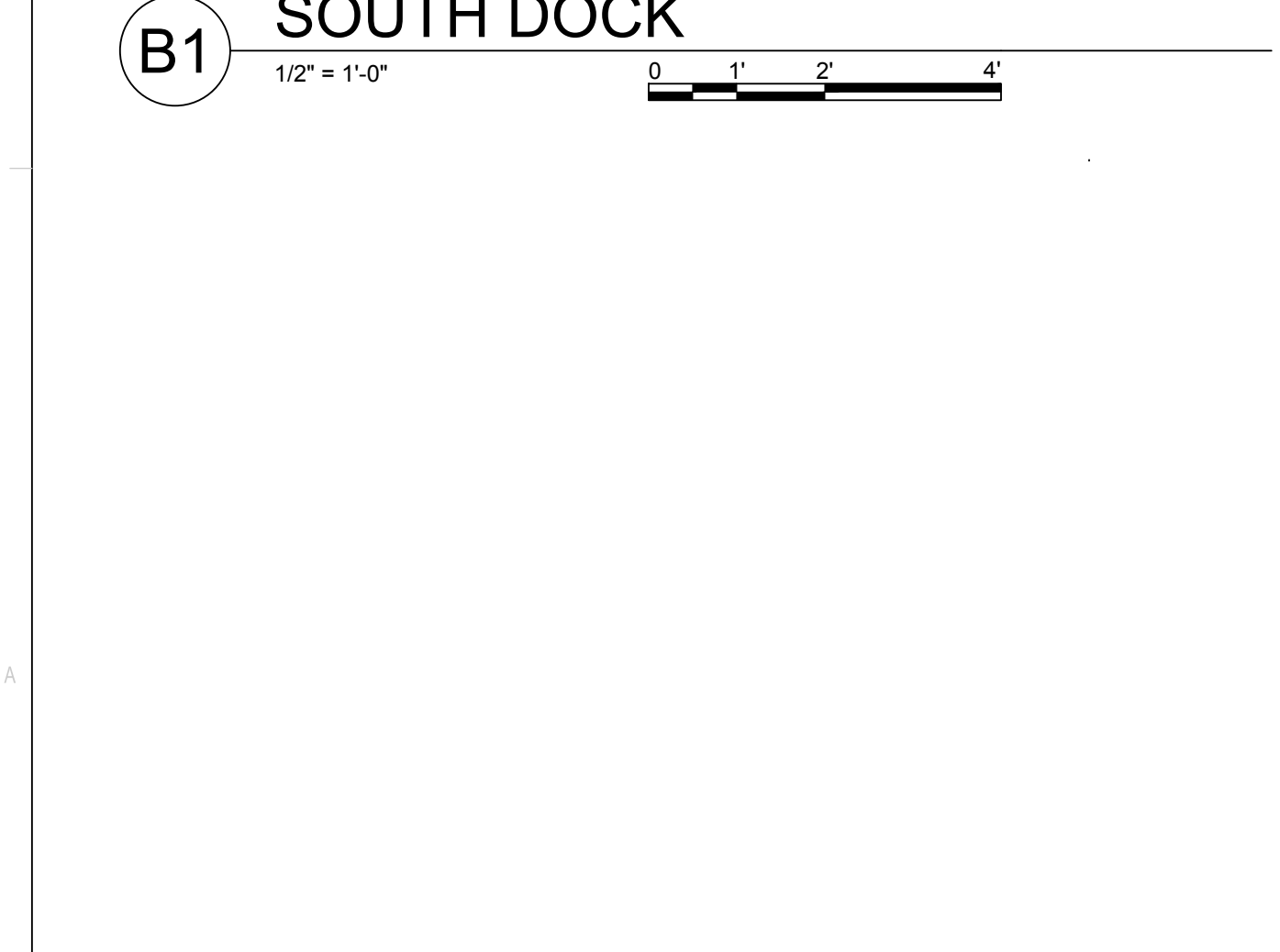
B2 ORNAMENTAL SECURITY FENCE: SWING GATE 1/2" = 1'-0"



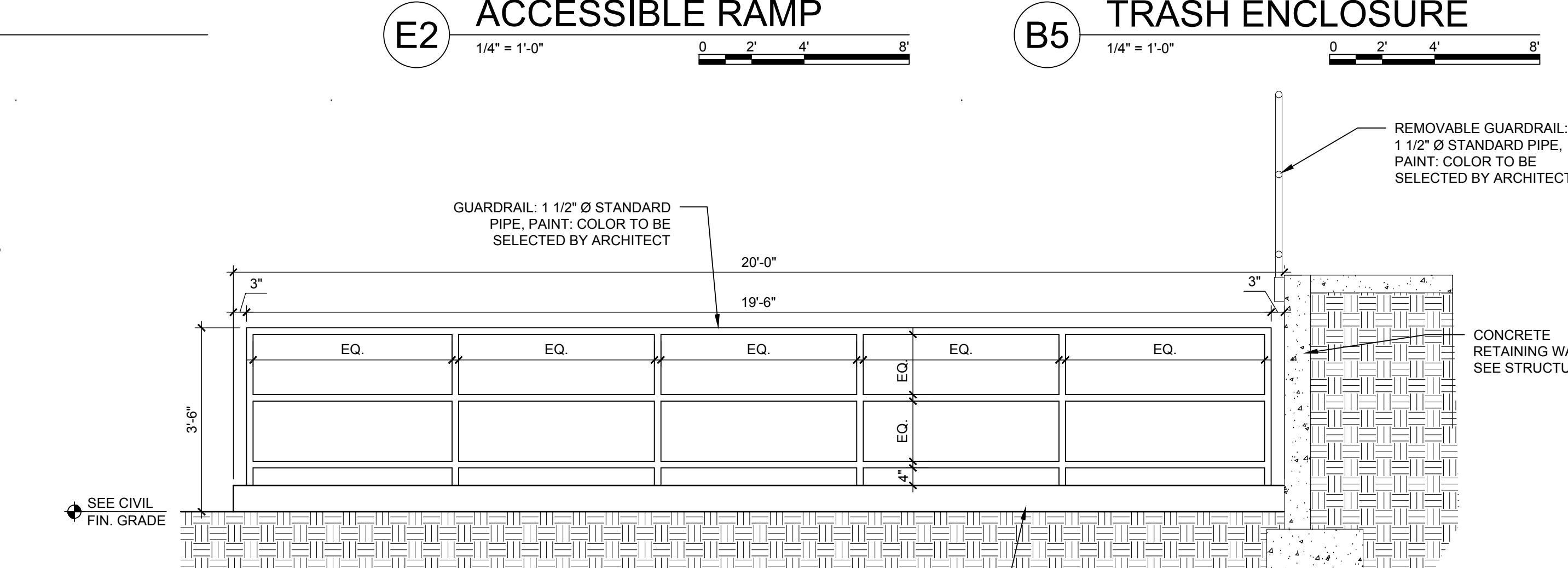
E2 CONCRETE ACCESSIBLE RAMP 1/4" = 1'-0"



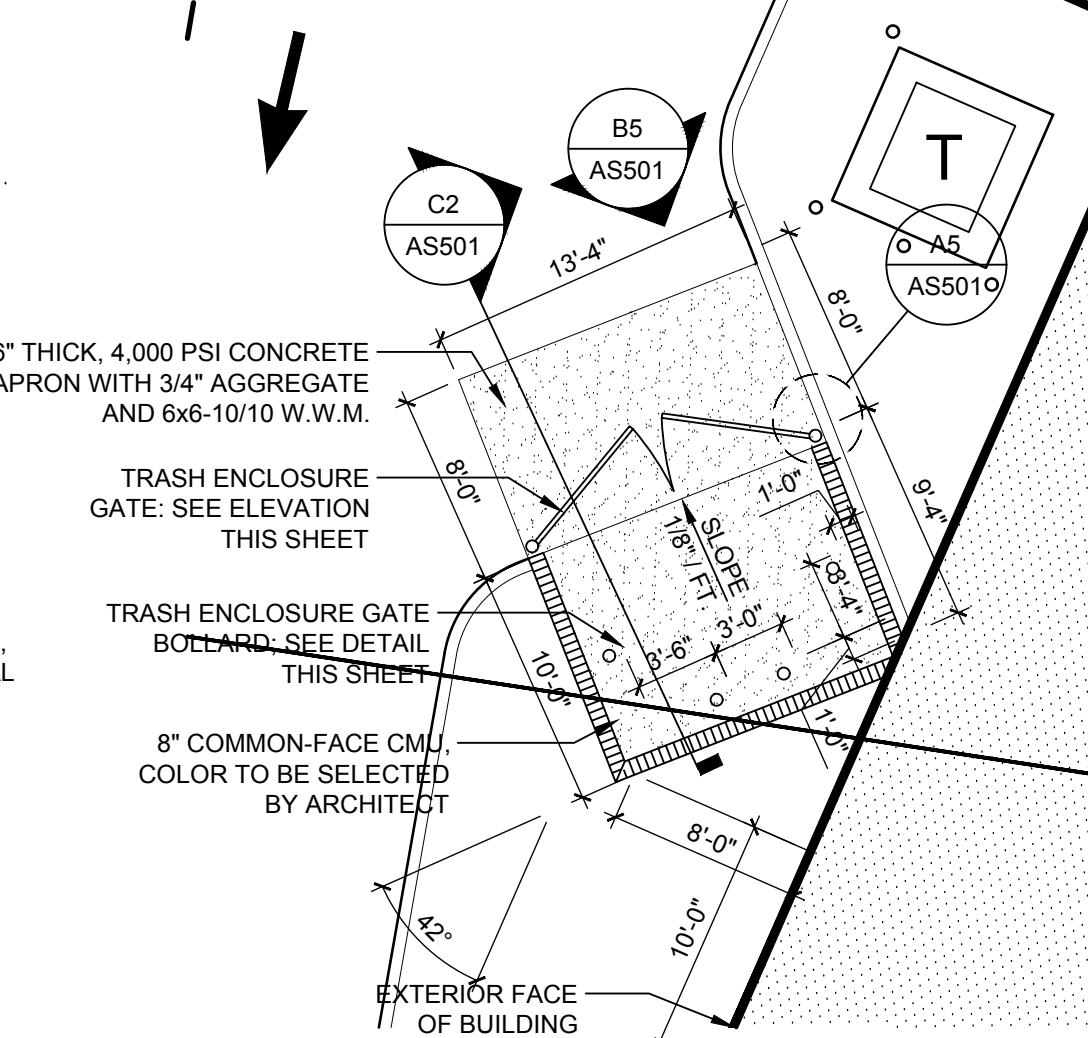
B5 TRASH ENCLOSURE 1/4" = 1'-0"



A2 POLE MOUNTED PARKING LOT LIGHT 3/8" = 1'-0"



A3 SOUTH DOCK 1/2" = 1'-0"



A6 TRASH ENCLOSURE 1/8" = 1'-0"