

GENERAL SHEET NOTES

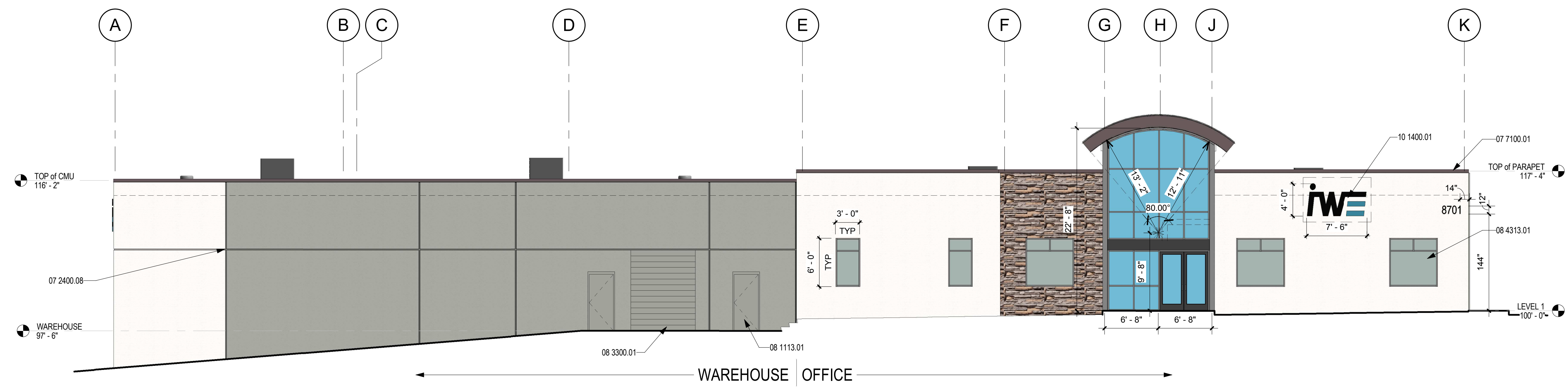
A. GENERAL SHEET NOTES

REFERENCE KEYNOTES

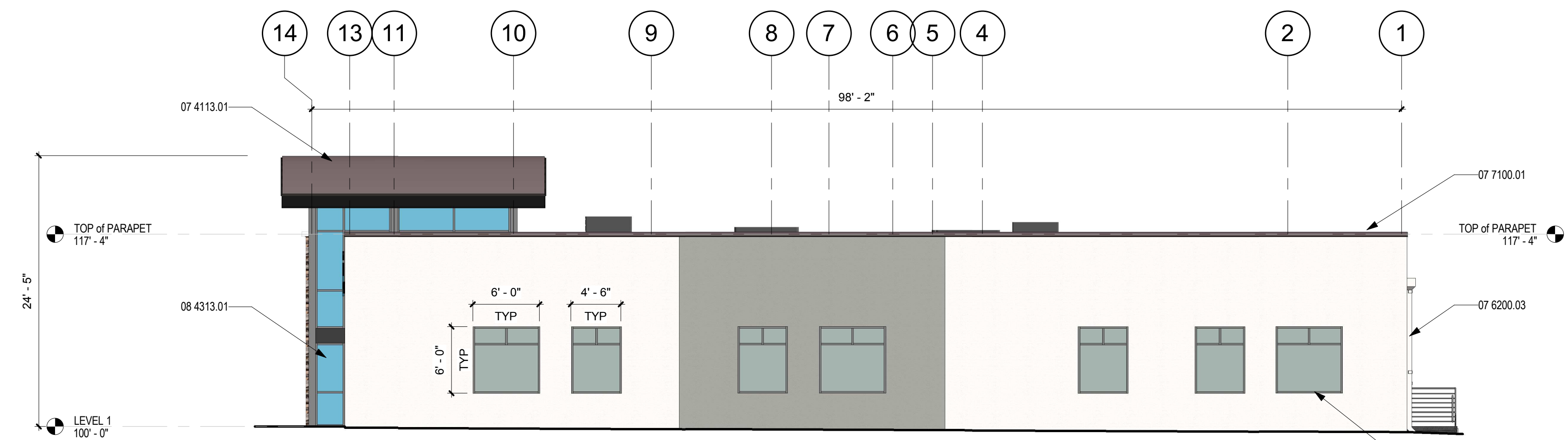
- 04 4200.01 MANUFACTURED THIN STONE VENEER
- 05 5213.01 GUARDRAIL - 1 1/2" Ø STANDARD PIPE
- 07 2400.01 2" EXTERIOR INSULATION AND FINISH SYSTEM - COLOR 1
- 07 2400.08 AESTHETIC 2" REVEAL
- 07 4113.01 METAL ROOF PANEL SYSTEM
- 07 6200.03 COLLECTOR BOX WITH OVERFLOW AND 6" X 6" DOWNSPOUT
- 07 7100.01 PREFINISHED MANUFACTURED COPING
- 08 1113.01 HOLLOW METAL DOOR AND FRAME
- 08 3300.01 COILING DOOR
- 08 4313.01 ALUMINUM-FRAMED STOREFRONT SYSTEM
- 10 1400.01 ILLUMINATED CHANNEL LETTERS

LEGEND

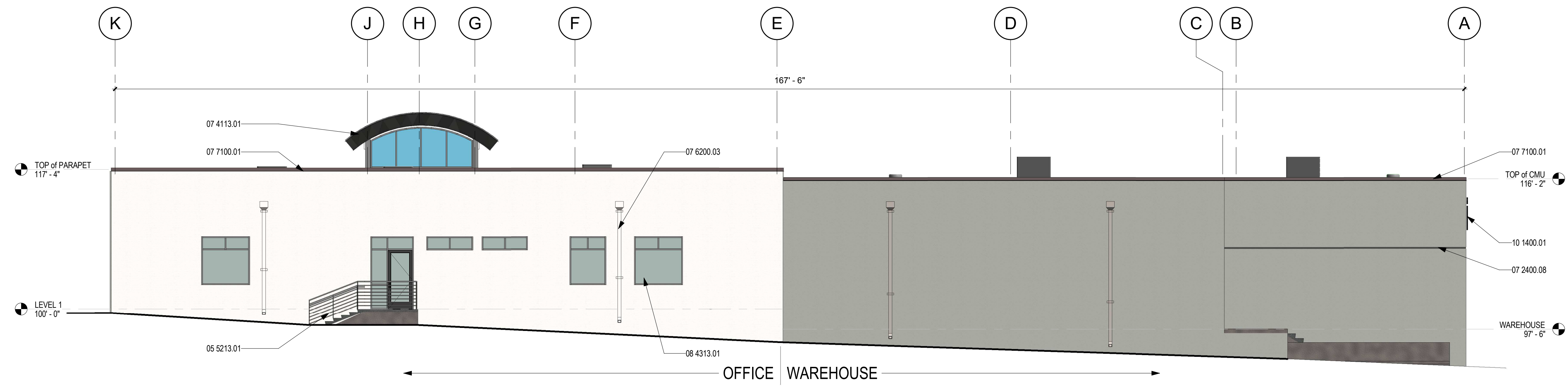
- EXTERIOR INSULATION FINISH SYSTEM
COLOR 1: DRYVIT 454 - STONE GREY OR SIMILAR
- EXTERIOR INSULATION FINISH SYSTEM
COLOR 2: DRYVIT 612 - MOONLIGHT OR SIMILAR
- BLUE TINTED GLASS
- CULTURED STONE VENEER
- METAL ROOF AND COPING



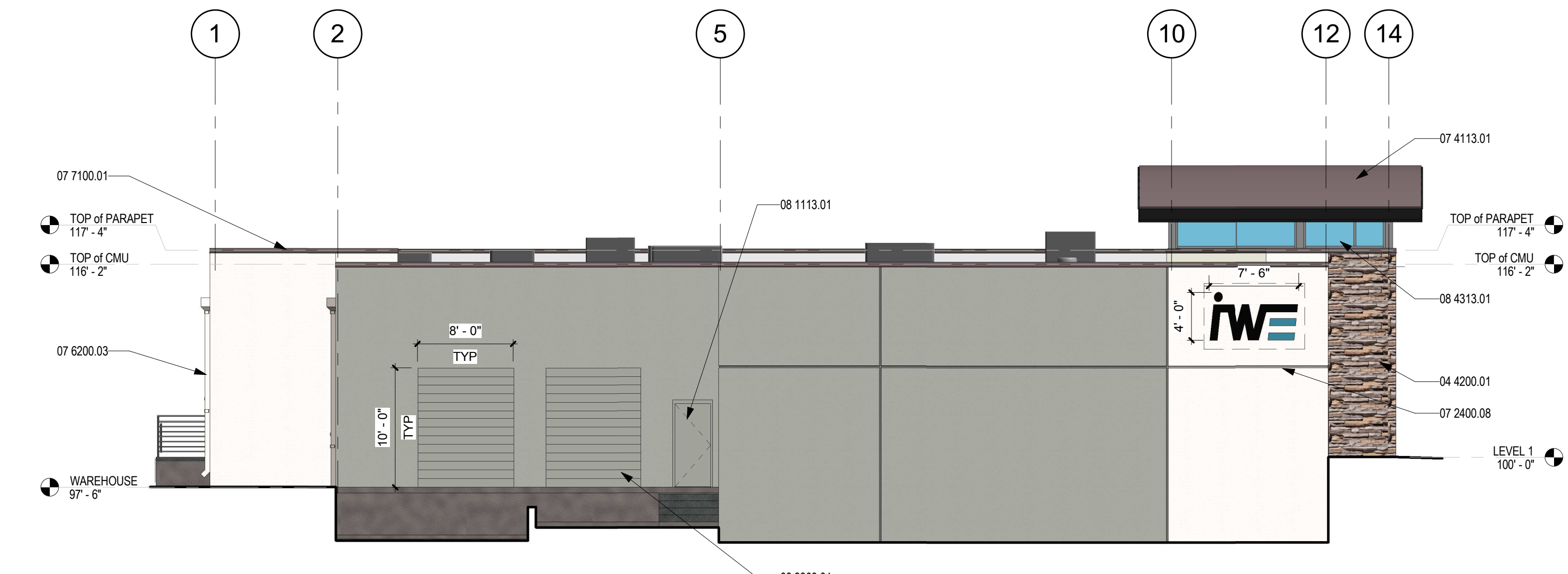
D1 EAST ELEVATION
1/8" = 1'-0"



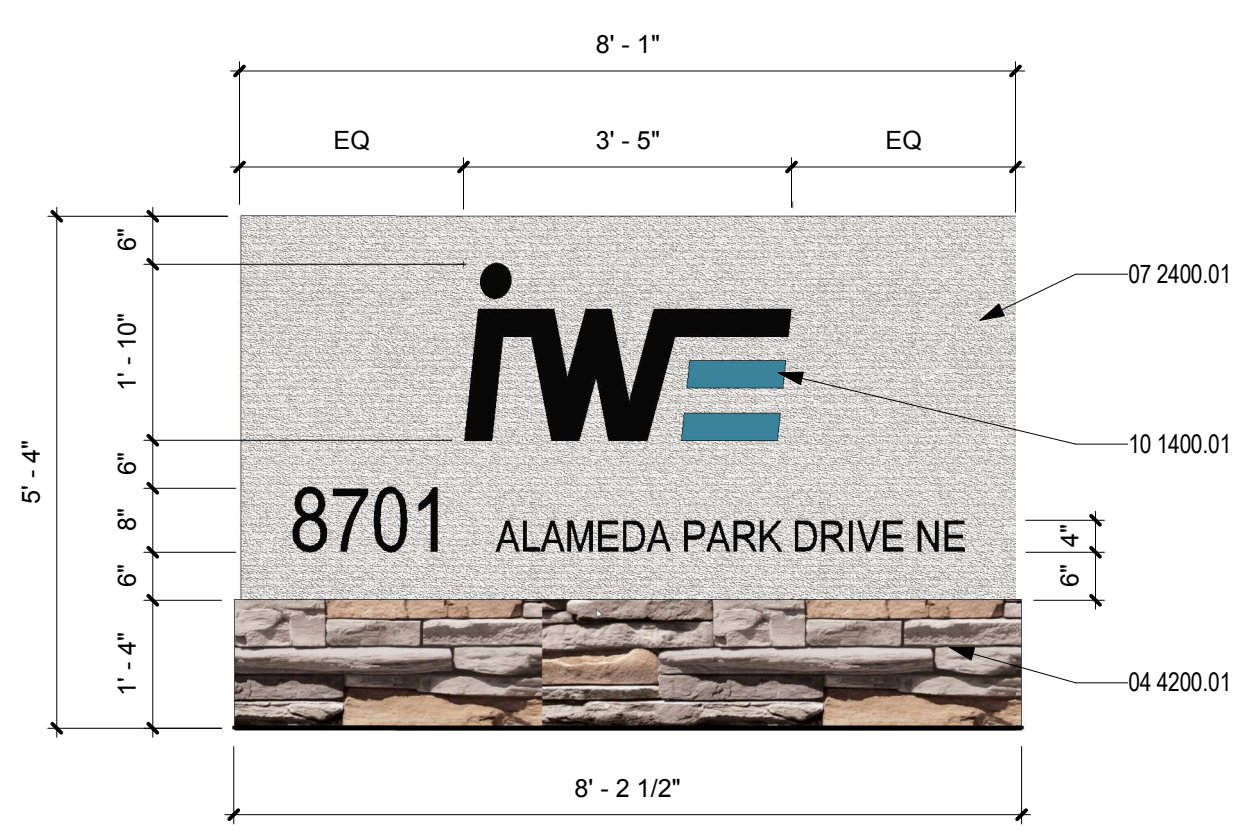
C3 NORTH ELEVATION
1/8" = 1'-0"



B1 WEST ELEVATION
1/8" = 1'-0"



A3 SOUTH ELEVATION
1/8" = 1'-0"



A1 MONUMENT SIGN
1/2" = 1'-0"