



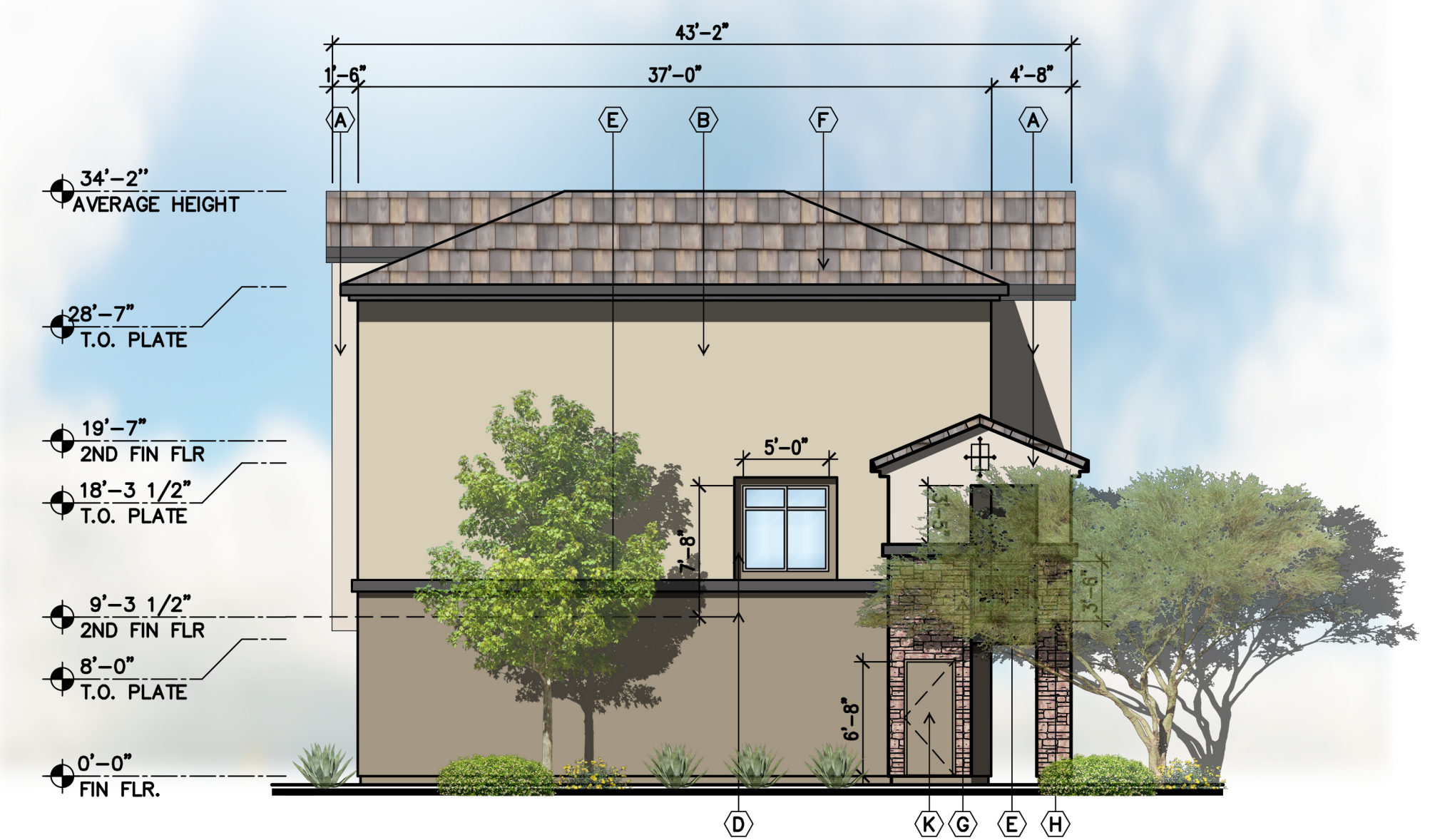
1 - FRONT ELEVATION (NORTH)

SCALE: 1/8" = 1'-0"



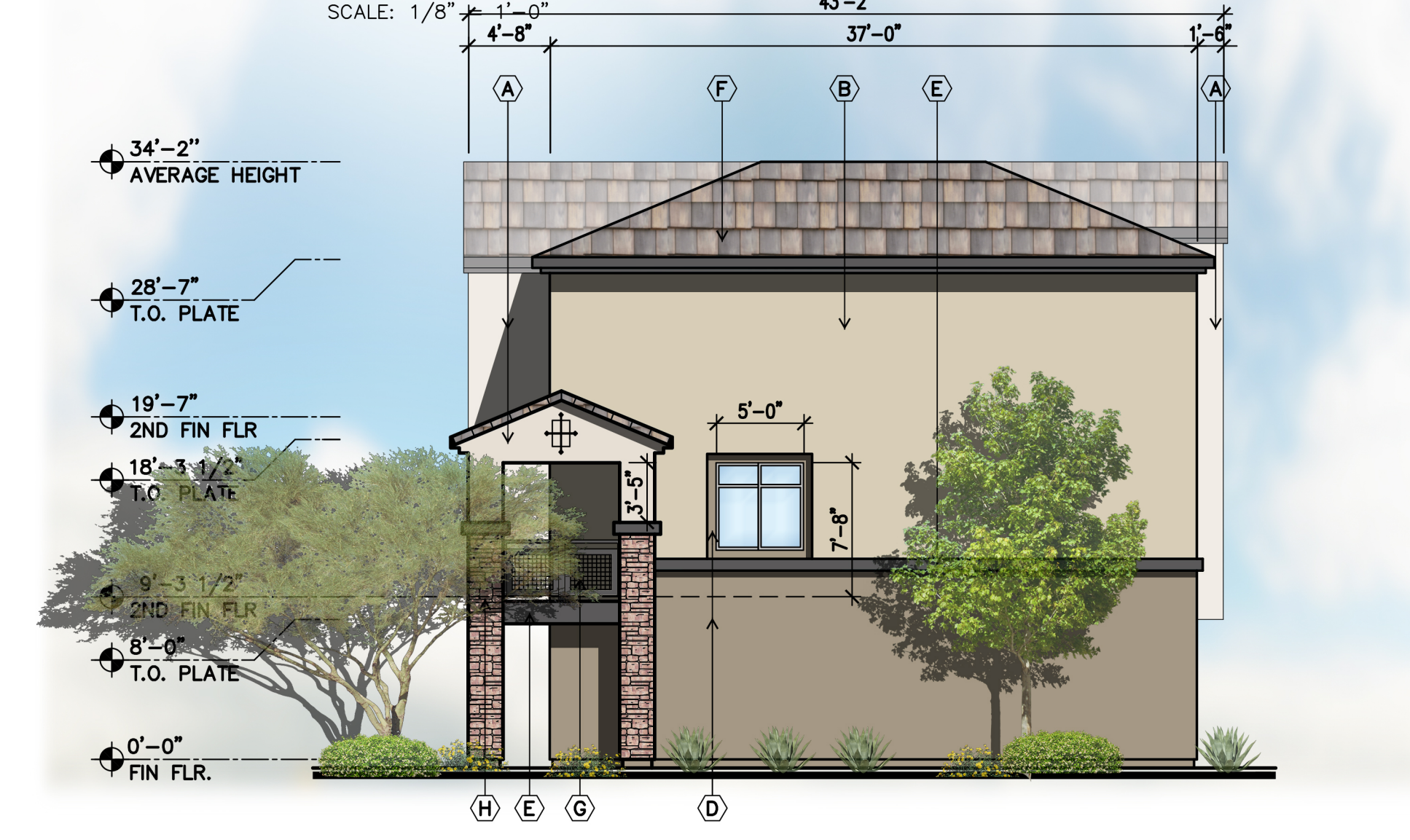
2 - BACK ELEVATION (SOUTH)

SCALE: 1/8" = 1'-0"



4 - LEFT ELEVATION (EAST)

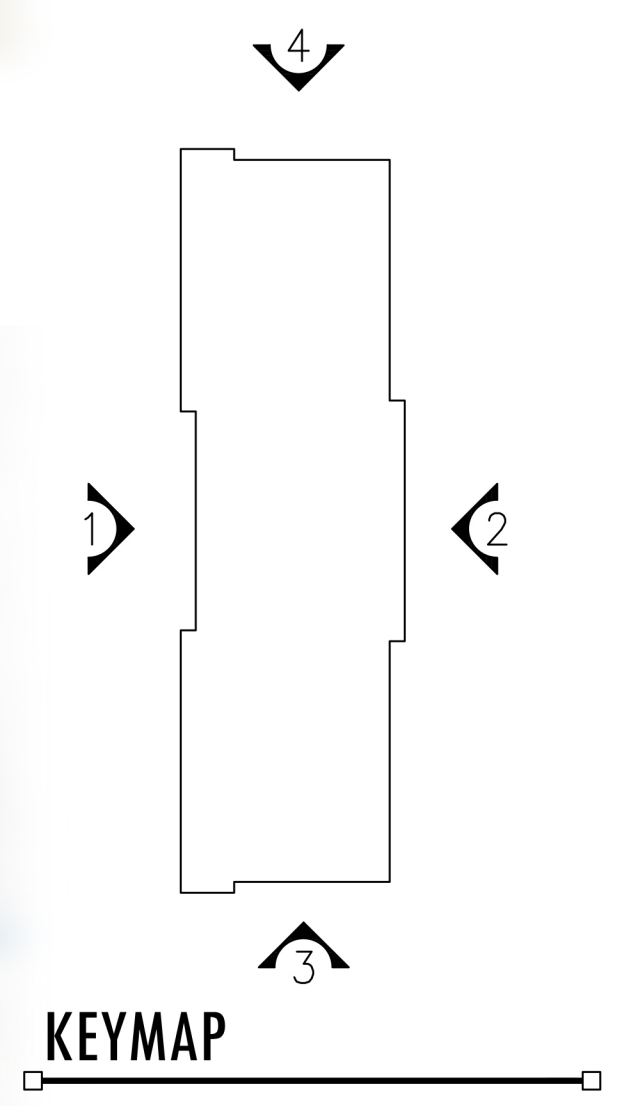
SCALE: 1/8" = 1'-0"



3 - RIGHT ELEVATION (WEST)

SCALE: 1/8" = 1'-0"

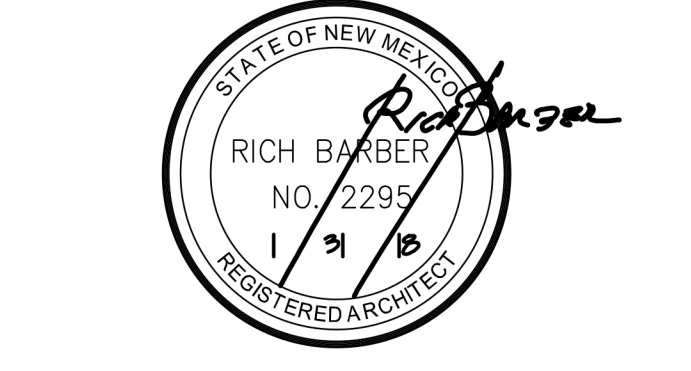
- MATERIAL KEY NOTES:**
- (A) STUCCO FINISH LIGHT BEIGE
 - (B) STUCCO FINISH DARK BEIGE
 - (C) STUCCO FINISH LIGHT BROWN
 - (D) STUCCO FINISH DARK BROWN
 - (E) STUCCO FINISH DARK GRAY
 - (F) TILE ROOF
 - (G) RAILINGS DARK GRAY
 - (H) STONE VENEER
 - (I) BRICK VENEER
 - (J) WALL OPENING
 - (K) SERVICE DOOR, COLOR TO MATCH ADJACENT WALL



LEGACY NAA APARTMENTS - II
SAN PEDRO AND ALAMEDA
Albuquerque, New Mexico

Office of Rich Barber
ORB
Architecture, LLC

WorldHQ@ORBArch.com



LEGACY HOSPITALITY

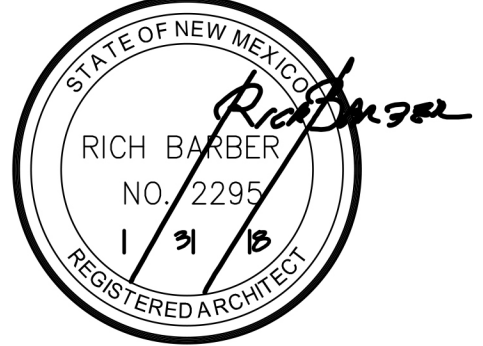
DATE: JANUARY 31, 2018 ORB# 17-219

A3.16

BUILDING TYPE 1 ELEVATIONS

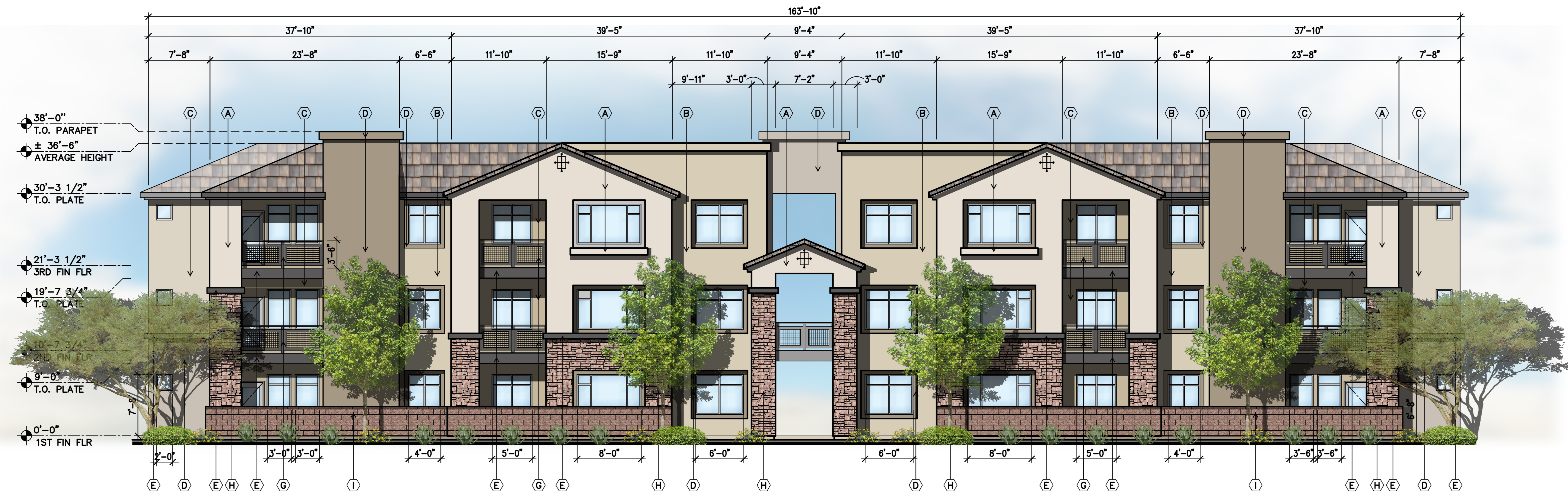
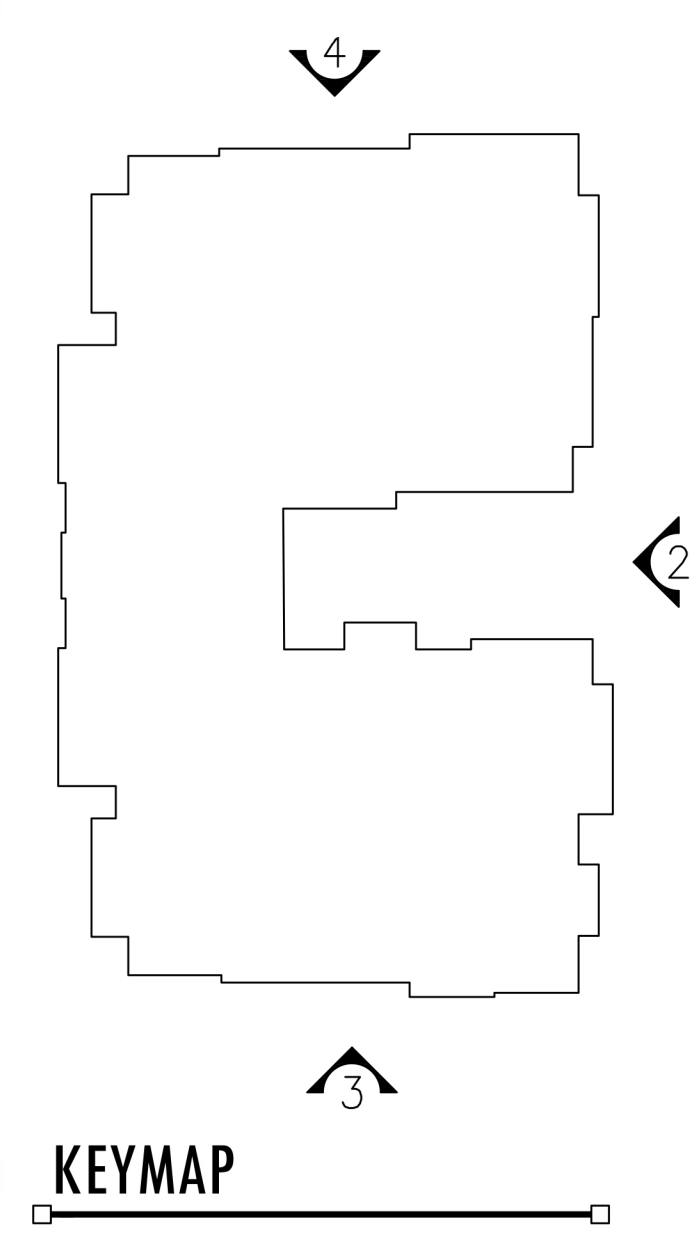


WorldHQ@ORBArch.com



LEGACY HOSPITALITY

- MATERIAL KEY NOTES:**
- (A) STUCCO FINISH LIGHT BEIGE
 - (B) STUCCO FINISH DARK BEIGE
 - (C) STUCCO FINISH LIGHT BROWN
 - (D) STUCCO FINISH DARK BROWN
 - (E) STUCCO FINISH DARK GRAY
 - (F) TILE ROOF
 - (G) RAILINGS DARK GRAY
 - (H) STONE VENEER
 - (I) BRICK VENEER
 - (J) WALL OPENING
 - (K) SERVICE DOOR, COLOR TO MATCH ADJACENT WALL



1 - FRONT ELEVATION

SCALE: 1/8" = 1'-0"

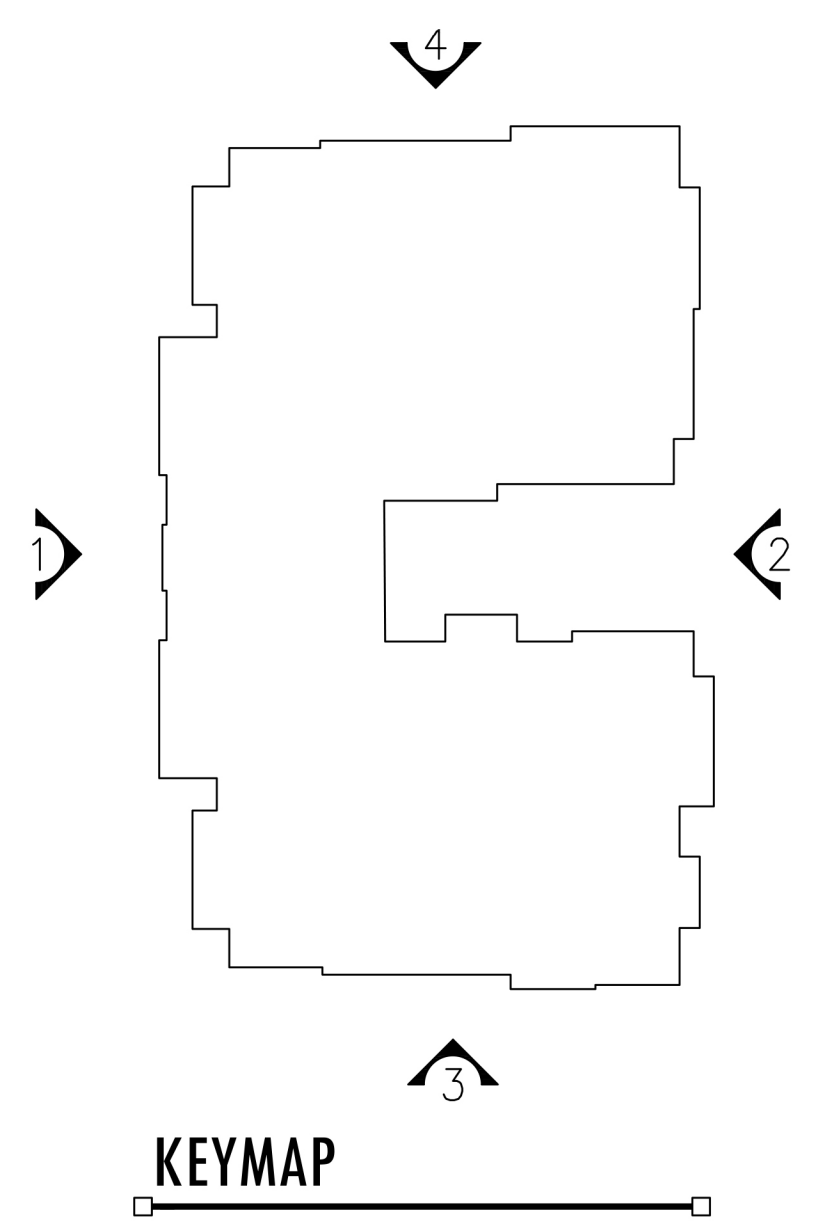


2 - REAR ELEVATION

SCALE: 1/8" = 1'-0"

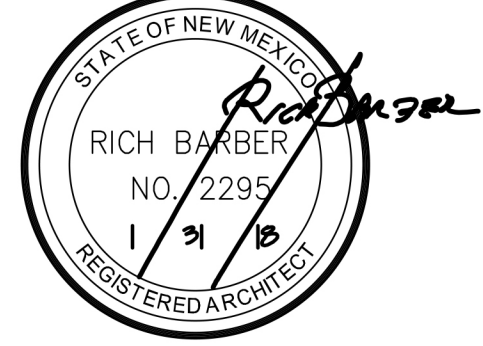


- MATERIAL KEY NOTES:**
- (A) STUCCO FINISH LIGHT BEIGE
 - (B) STUCCO FINISH DARK BEIGE
 - (C) STUCCO FINISH LIGHT BROWN
 - (D) STUCCO FINISH DARK BROWN
 - (E) STUCCO FINISH DARK GRAY
 - (F) TILE ROOF
 - (G) RAILINGS DARK GRAY
 - (H) STONE VENEER
 - (I) BRICK VENEER
 - (J) WALL OPENING
 - (K) SERVICE DOOR, COLOR TO MATCH ADJACENT WALL



**LEGACY NAA
APARTMENTS - II**
SAN PEDRO AND ALAMEDA
Albuquerque, New Mexico

Office of Rich Barber
ORB
Architecture, LLC
WorldHQ@ORBArch.com

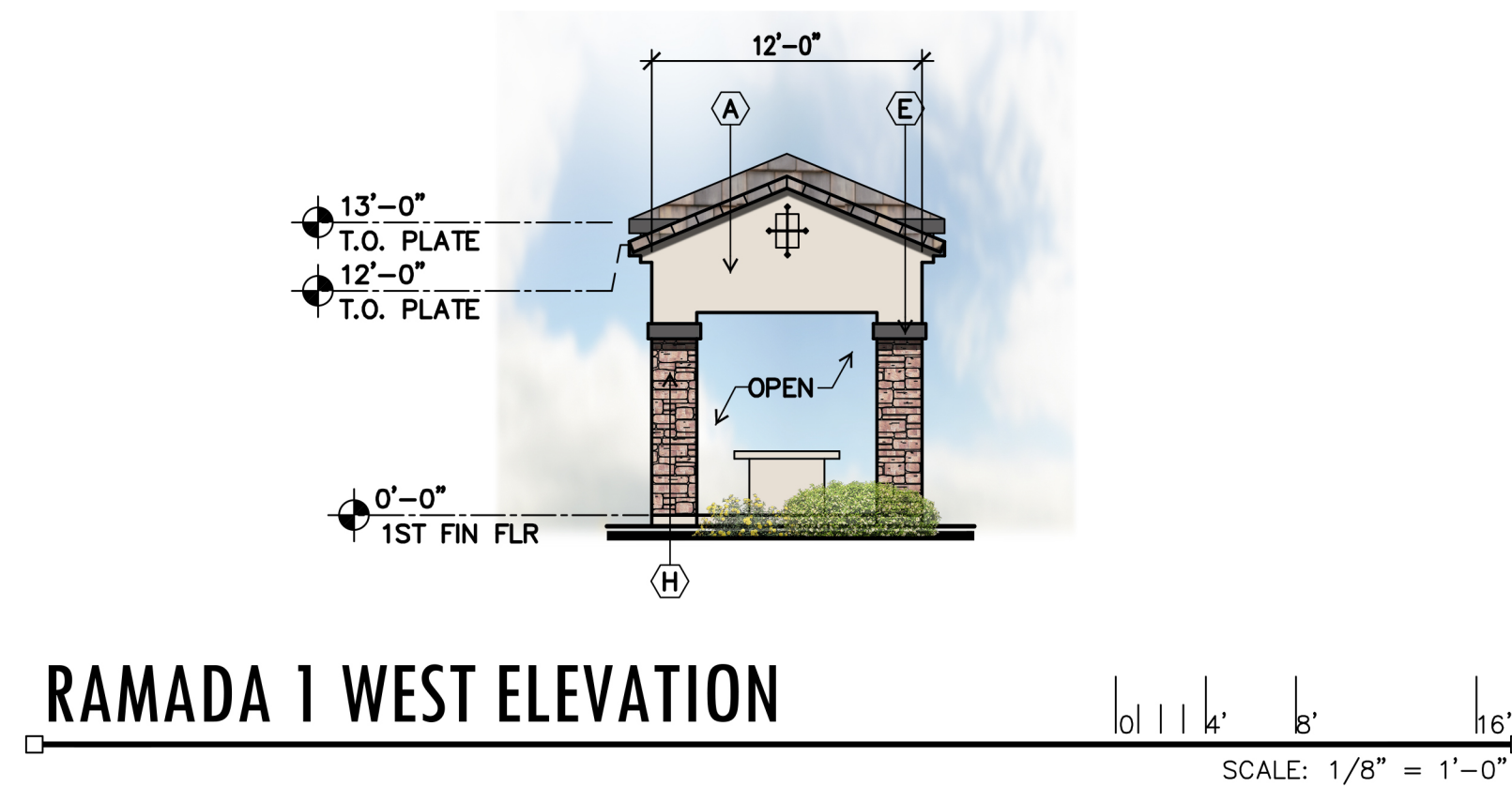
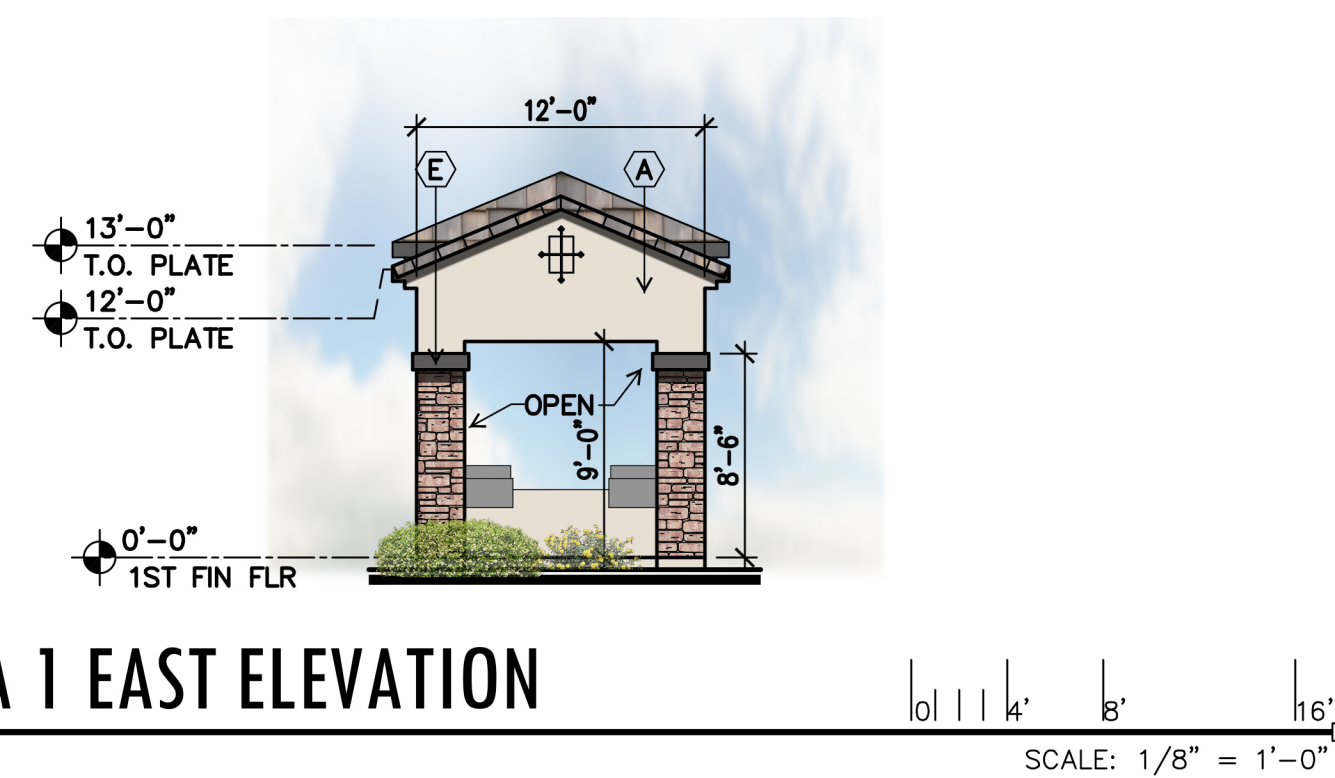
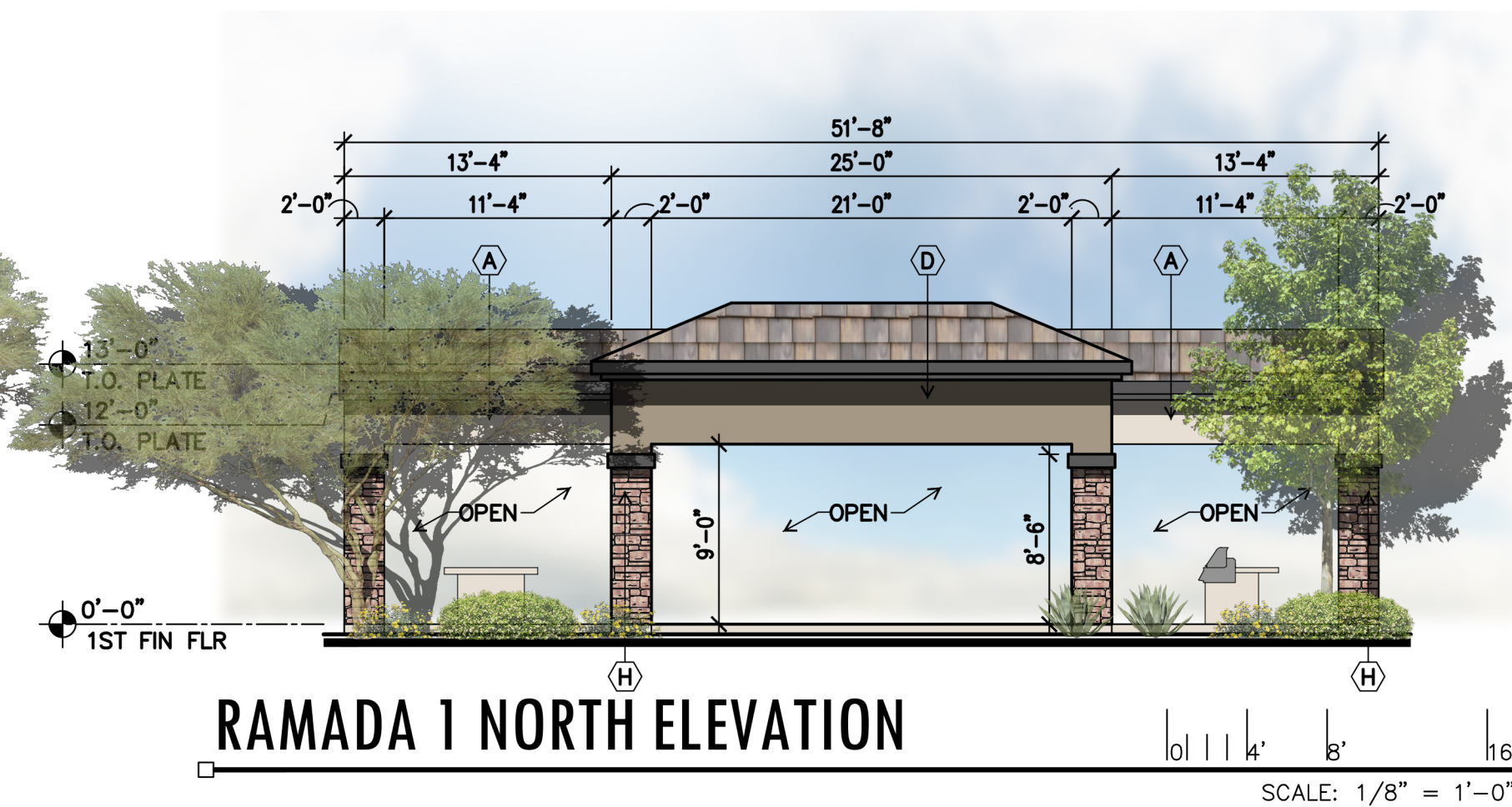
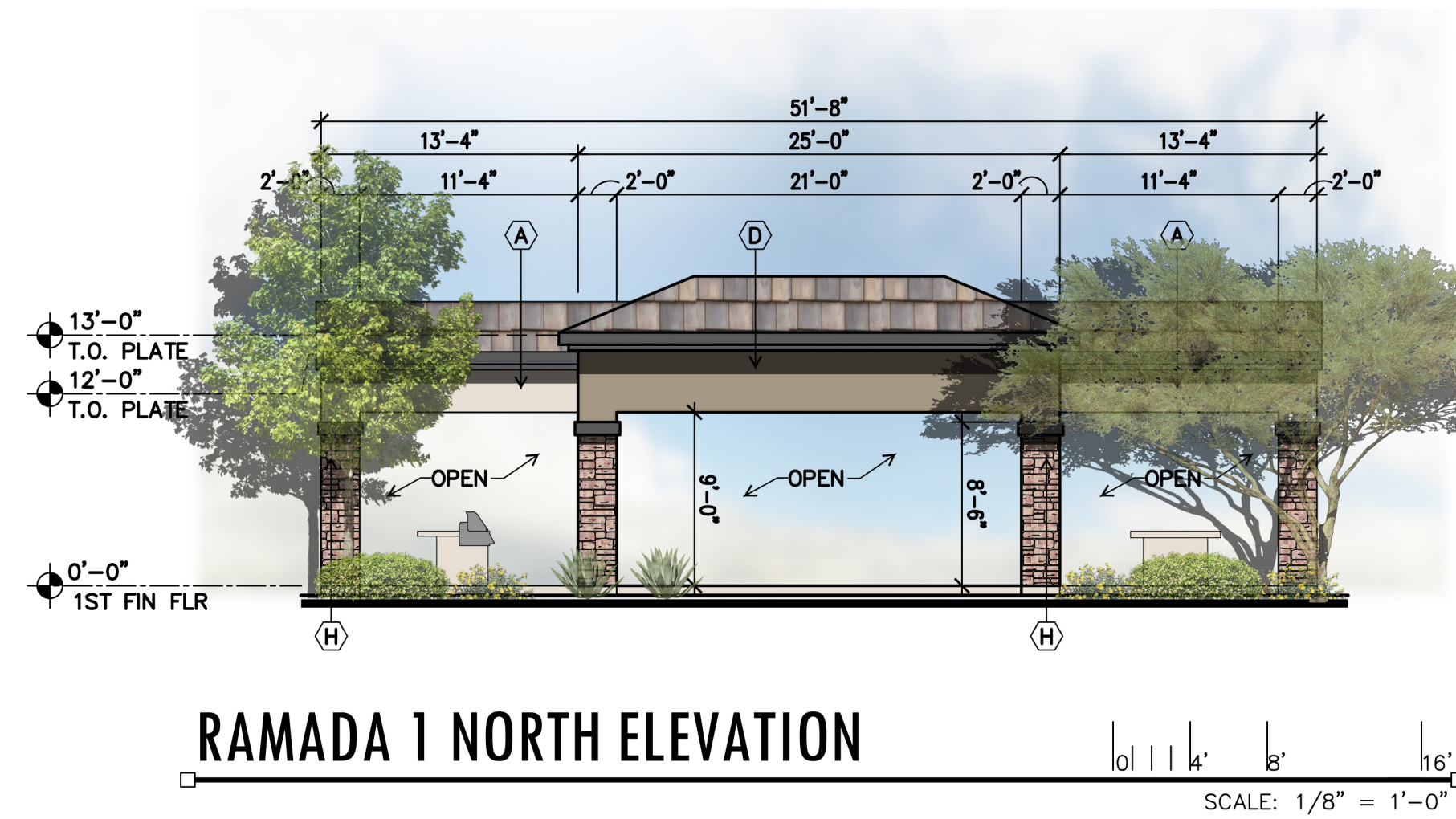
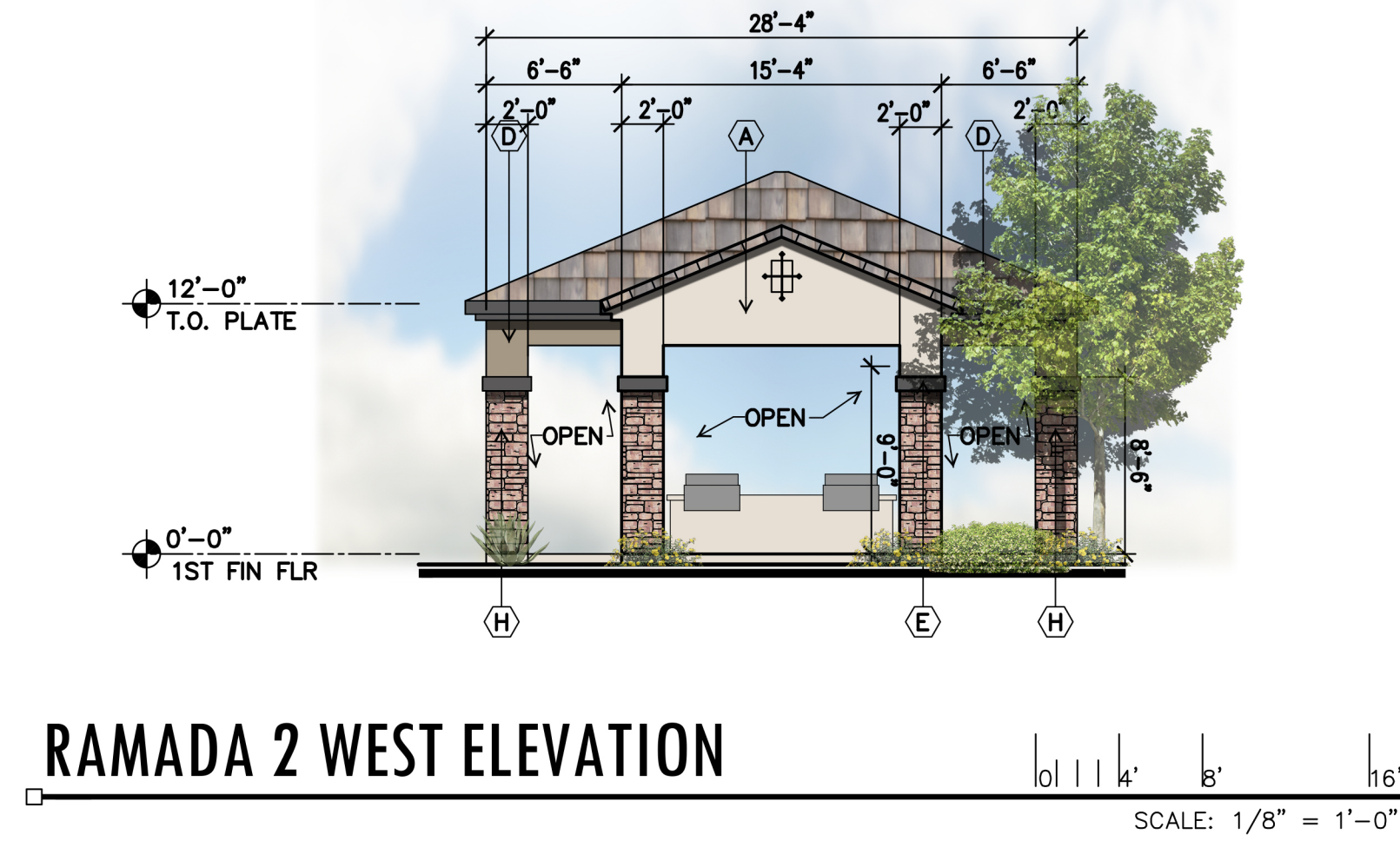
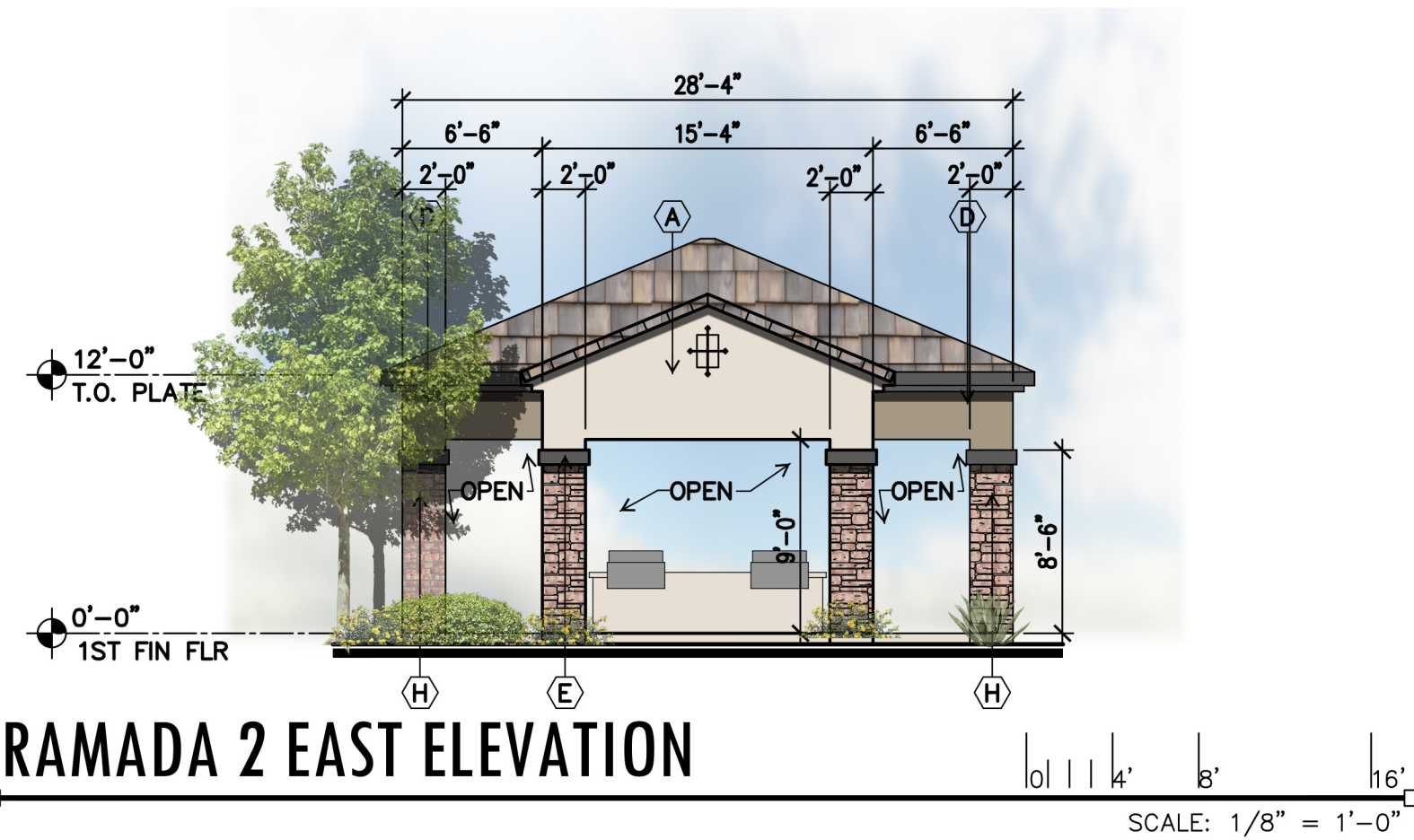
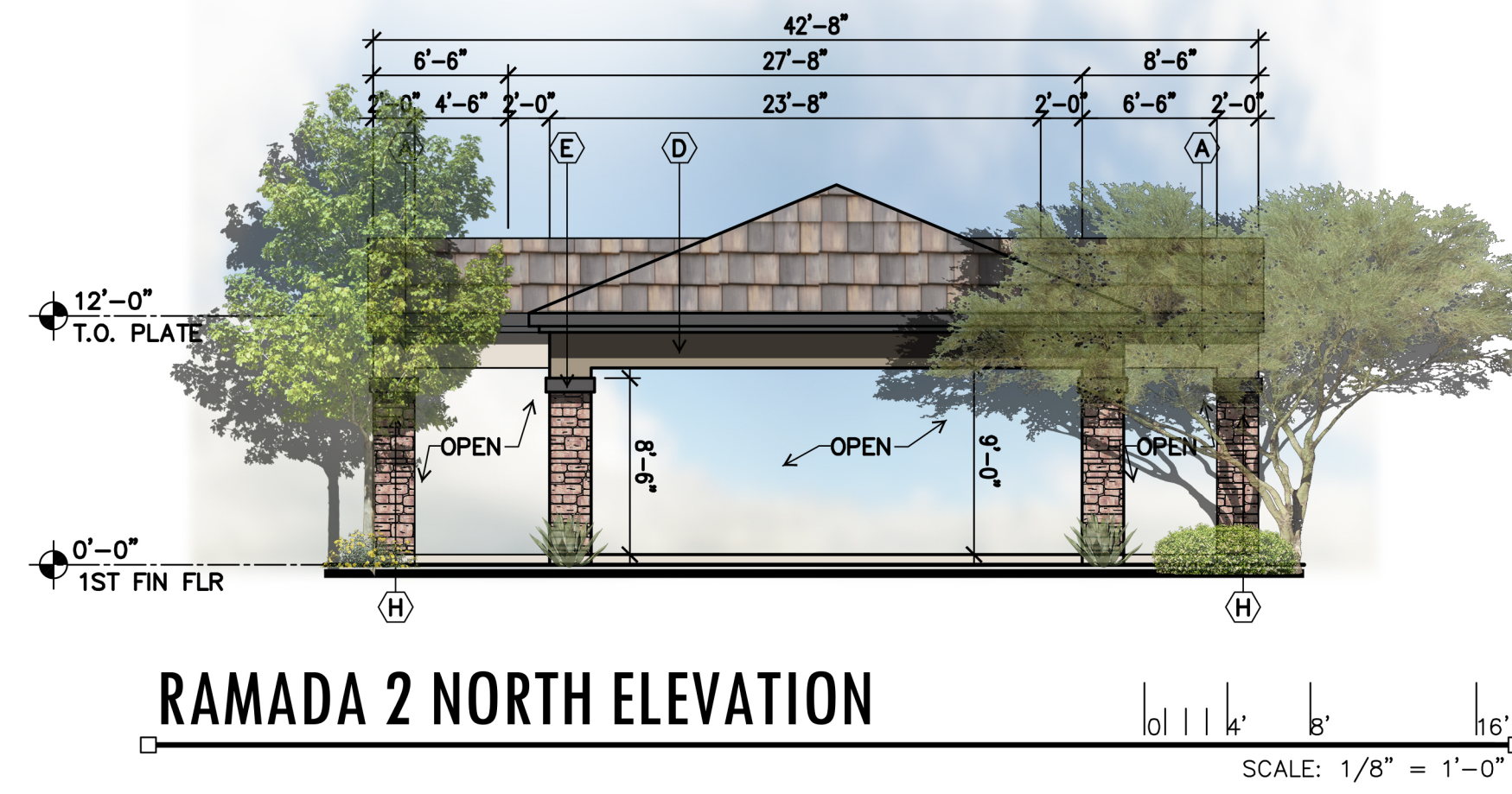
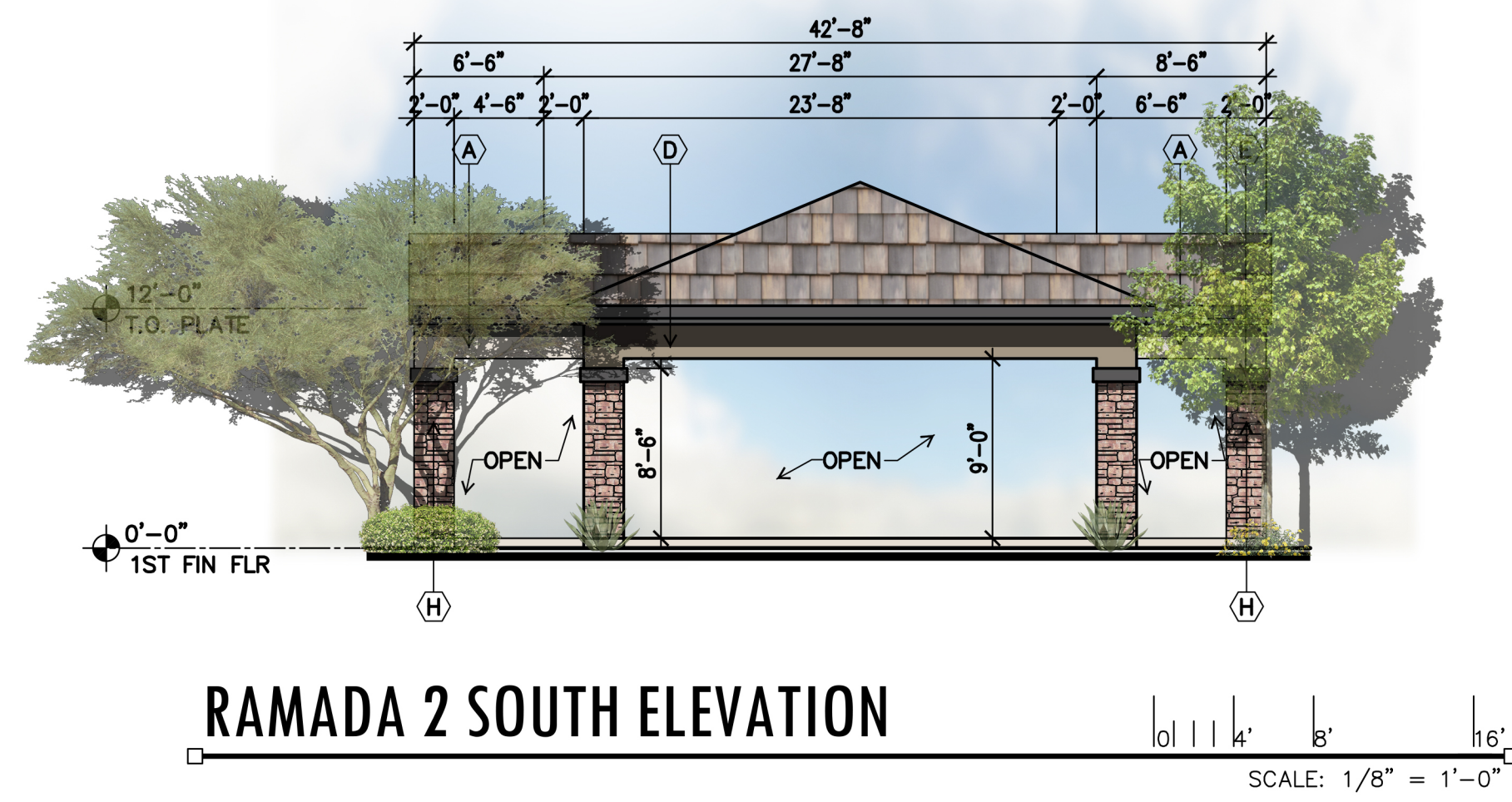


LEGACY HOSPITALITY

DATE: JANUARY 31, 2018 ORB # 17-219

A3.27

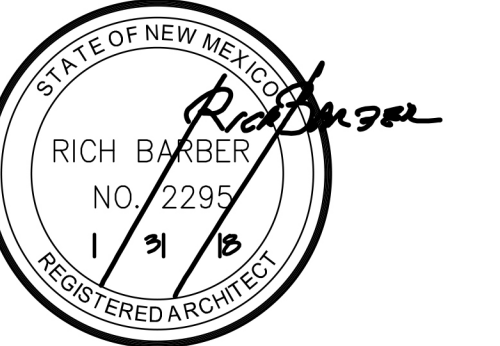
BUILDING TYPE 2 AND 3
ELEVATIONS



- MATERIAL KEY NOTES:**
- (A) STUCCO FINISH LIGHT BEIGE
 - (B) STUCCO FINISH DARK BEIGE
 - (C) STUCCO FINISH LIGHT BROWN
 - (D) STUCCO FINISH DARK BROWN
 - (E) STUCCO FINISH DARK GRAY
 - (F) TILE ROOF
 - (G) RAILINGS DARK GRAY
 - (H) STONE VENEER
 - (I) BRICK VENEER
 - (J) WALL OPENING
 - (K) SERVICE DOOR, COLOR TO MATCH ADJACENT WALL

**LEGACY NAA
APARTMENTS - II**
SAN PEDRO AND ALAMEDA
Albuquerque, New Mexico

Office of Rich Barber
ORB
Architecture, LLC
WorldHQ@ORBArch.com



LEGACY HOSPITALITY

DATE: JANUARY 31, 2018 ORB # 17-219

A5.10

RAMADAS
ELEVATIONS