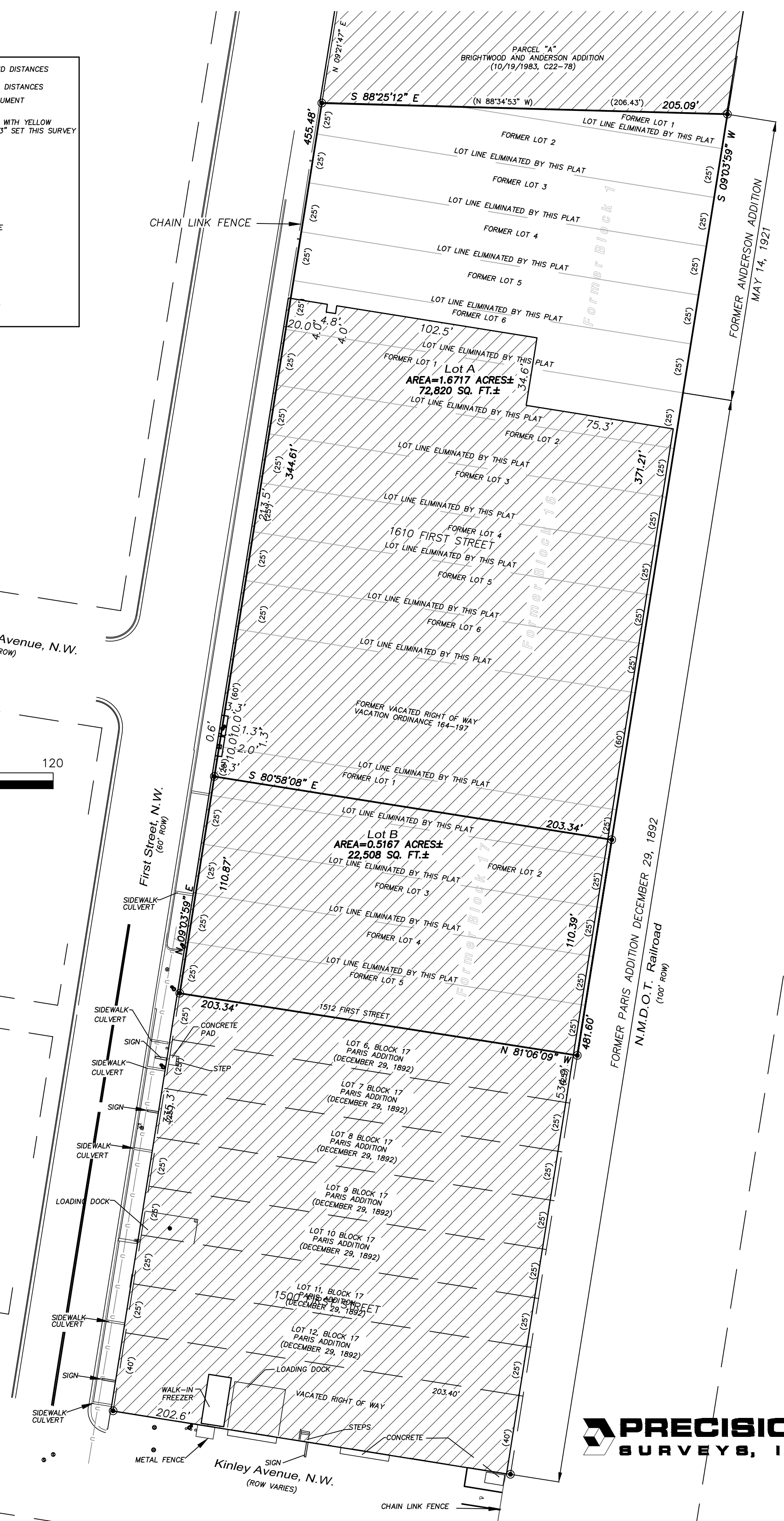
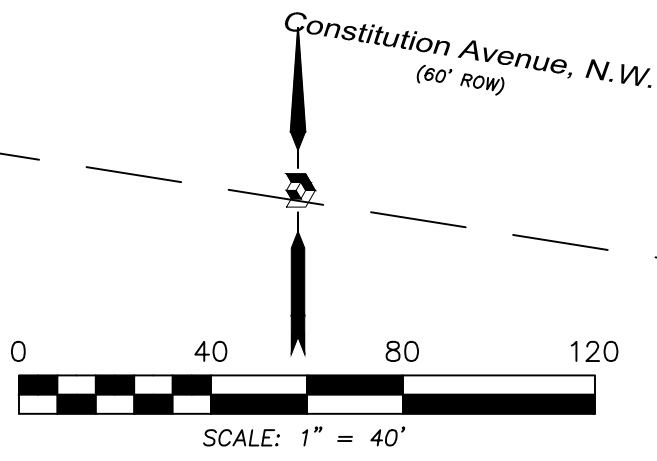


Sketch Plat of
Lots A and B

Dallas Commercial

Town of Albuquerque Grant Projected
Section 17, Township 10, Range 2, N.M.P.M.
Albuquerque, Bernalillo County, New Mexico
December 2017

N 90°00'00" E	MEASURED BEARING AND DISTANCES
(N 90°00'00" E)	RECORD BEARINGS AND DISTANCES AS DESIGNATED
○	FOUND AND USED MONUMENT AS DESIGNATED
⊙	DENOTES NO. 4 REBAR WITH YELLOW PLASTIC CAP "PS 11993" SET THIS SURVEY
●	UTILITY POLE
⊞	ELECTRIC METER
⊞	TRANSFORMER
⊞	WALL HYDRANT
⊞	WATER METER
⊞	STORM SEWER MANHOLE
⊞	CLEANOUT
⊞	SIGN
⊞	GAS METER
—	CURB AND GUTTER
—	OVERHEAD UTILITY LINE



PRECISION SURVEYS, INC.

OFFICE LOCATION:
9200 San Mateo Boulevard, NE
Albuquerque, NM 87113
505.856.5700 PHONE
505.856.7900 FAX

C:\2011\112102.BD - 150 - 1512 & 1520 151 Paris Addition\CAD Files\112102_2017_SITE_PLAN.dwg 12/12/2017 11:56:13 AM