



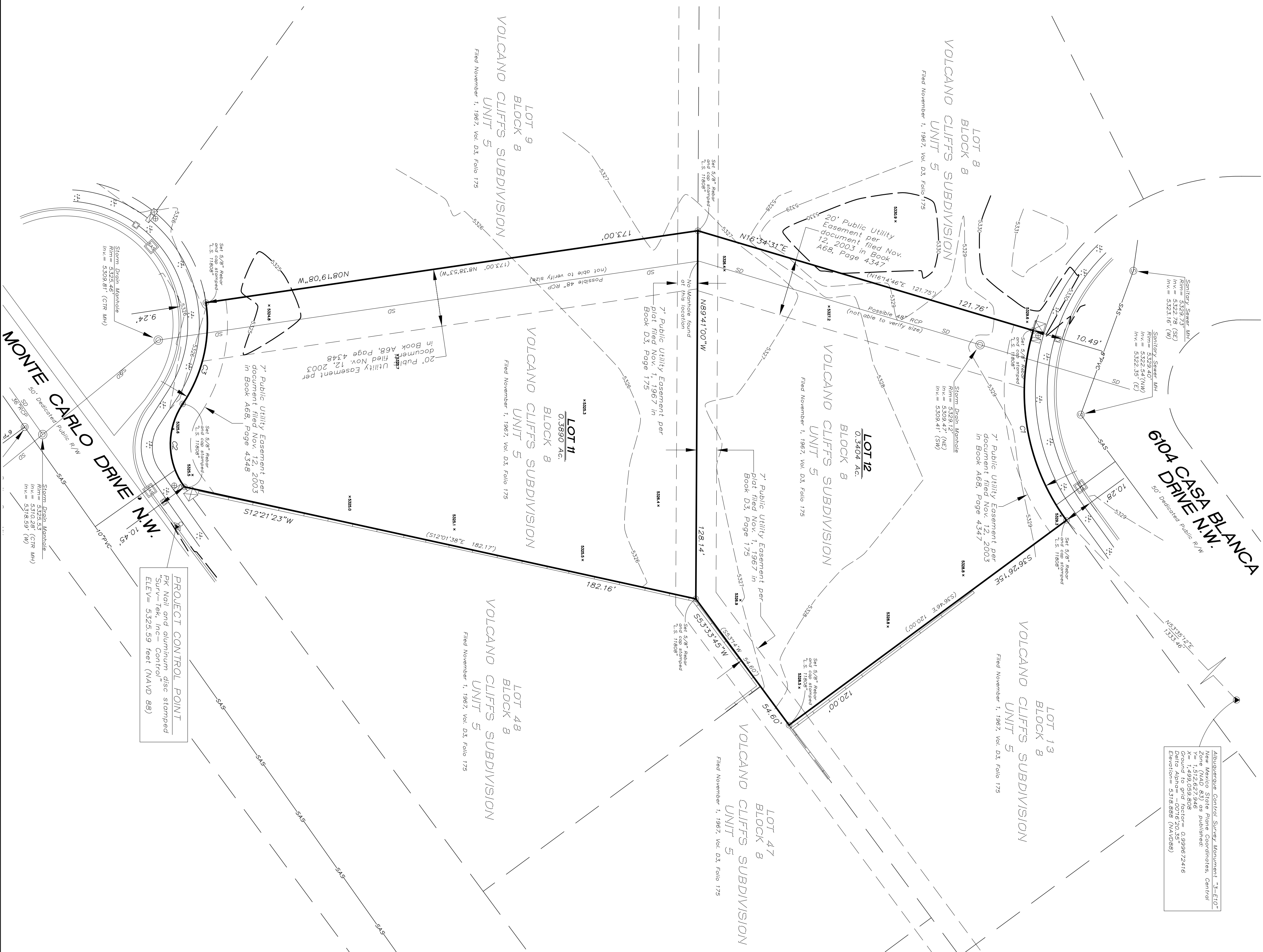
VICINITY MAP
NOT TO SCALE

LEGEND

- ⊙ Storm Drain, Manhole
- ⊙ Sanitary Sewer Manhole
- ⊙ Water Meter
- ⊙ Cable Pedestal
- ⊙ Electric Pedestal
- ⊙ Telephone Pedestal
- ⊙ Sanitary Sewer Manhole
- ⊙ Electric Transformer
- ⊙ Hydrant
- ⊙ Water Valve
- ⊙ Concrete Symbol
- ⊙ Wall

GENERAL NOTES

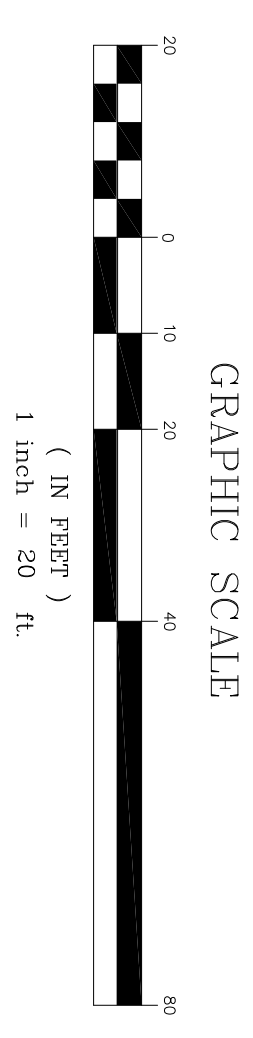
1. Bearings are grid based on New Mexico State Plane Coordinate System, Central Zone (NAD 83).
2. Distances are ground.
3. Distances along curved lines are arc lengths.
4. Record Plat or Deed bearings and distances, where they differ from those established by this field survey, are shown in parenthesis ().
5. All corners found in place and held were tagged with a brass disk stamped "HUGG L.S. 9750" or "HUGG L.S. 11808" unless otherwise indicated hereon.
6. All corners that were set are either a 5/8" rebar with cap stamped "L.S. 9750" or "HUGG L.S. 11808" or a concrete nail with brass disk stamped "HUGG L.S. 9750" or "HUGG L.S. 11808" unless otherwise indicated hereon.
7. Vertical Datum is based upon the Albuquerque Control Survey Monument "3-E10", Elevation = 5,318.888 feet (NAVD 1988).
8. Contour Interval is one foot.
9. Field surveys were performed during the month of November, 2017.
10. Documents used in the preparation of this survey are as follows:
 - a. Plat entitled "VOLCANO CLIFFS SUBDIVISION, UNIT 5, JULY, 1966, BERNALILLO COUNTY, NEW MEXICO, S-1272-5", filed in the office of the County Clerk of Bernalillo County on November 1, 1967, in Book D3, Page 175.
 - b. Document entitled "EXHIBIT SHOWING PUBLIC UTILITY EASEMENTS WITHIN LOT 9, BLOCK B, UNIT FIVE, VOLCANO CLIFFS SUBDIVISION, BERNALILLO COUNTY, NEW MEXICO, NOVEMBER 2003", filed in the office of the County Clerk of Bernalillo County on November 12, 2003, in Book A68, Page 4347.
 - c. Document entitled "EXHIBIT SHOWING PUBLIC UTILITY EASEMENTS WITHIN LOT 12, BLOCK B, UNIT FIVE, VOLCANO CLIFFS SUBDIVISION, BERNALILLO COUNTY, NEW MEXICO, NOVEMBER 2003", filed in the office of the County Clerk of Bernalillo County on November 12, 2003, in Book A68, Page 4348.
11. The word Certify or Certification as used herein is understood to be an expression of professional opinion by the surveyor, based on the data furnished to him, and does not constitute a guarantee, nor a warranty, expressed or implied.
12. No current Title Report was provided for this survey. Any possible assessments, conditions or restrictions that may be disclosed by such a report are not shown on this survey.



ALBUQUERQUE CONTROL SURVEY MONUMENT "3-E10"
Zone (NAD 83) as published
N = 5223.16 (ft)
E = 5223.35 (ft)
Elevation = 5318.888 (NAVD88)

PROJECT CONTROL POINT
Nail and aluminum disc stamped
"SURV-104, Inc - Control"
ELEV = 5325.59 feet (NAVD 88)

BOUNDARY AND TOPOGRAPHIC SURVEY
LOTS 11 AND 12, BLOCK 8
VOLCANO CLIFFS SUBDIVISION UNIT FIVE
WITHIN
SECTION 27
TOWNSHIP 11 NORTH, RANGE 2 EAST
NEW MEXICO PRINCIPAL MERIDIAN
CITY OF ALBUQUERQUE
BERNALILLO COUNTY, NEW MEXICO
NOVEMBER, 2017



CURVE LENGTH	RADIUS	TANGENT	CHORD	CHORD BEARING	DELTA
C1	63.51'	75.13'	37.47'	67.160°	N80°04'03"E
C2	30.79'	25.00'	17.687'	N88°48'33"E	70°32'50"
C3	37.01'	50.00'	19.40'	N77°06'48"W	42°24'37"

LEGAL DESCRIPTION

Lots numbered Eleven (11) and Twelve (12), in Block numbered Eight (8), Volcano Cliffs Subdivision Unit 5, as the same are shown and designated on the plat entitled "VOLCANO CLIFFS SUBDIVISION, UNIT 5, NOVEMBER 1, 1967, Vol. D3, Page 175" filed in the office of the County Clerk of Bernalillo County on November 1, 1967, in Book D3, Page 175.

FLOOD ZONE DETERMINATION

The subject property (as shown hereon) appears to be within "ZONE X" (areas determined to be outside the 0.2% annual chance floodplain) as shown on National Flood Insurance Program Flood Insurance Rate Map Number 350100150, Map Revised September 20, 2005.

SURVEYORS CERTIFICATION

I, Russ P. Hugg, New Mexico Professional Surveyor Number 9750, hereby certify that this Boundary Survey Plat was prepared from an original and true copy of the plat of the subdivision shown hereon, and am responsible for this survey; that this survey is true and correct to the best of my knowledge and belief, and that this Boundary and Topographic Survey was conducted in accordance with the Minimum Standards for Surveying in New Mexico; and that this survey is not a land division or subdivision as defined in the New Mexico Subdivision Act and that this is a Boundary Survey Plat of two parcels of land.

Russ P. Hugg
NMS No. 9750
November 30, 2017

