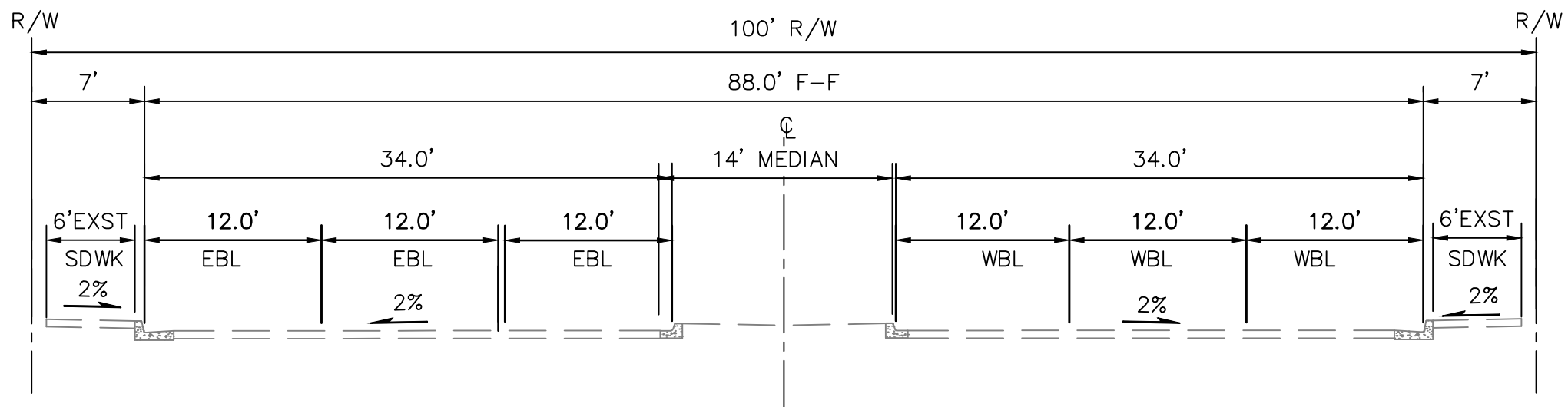


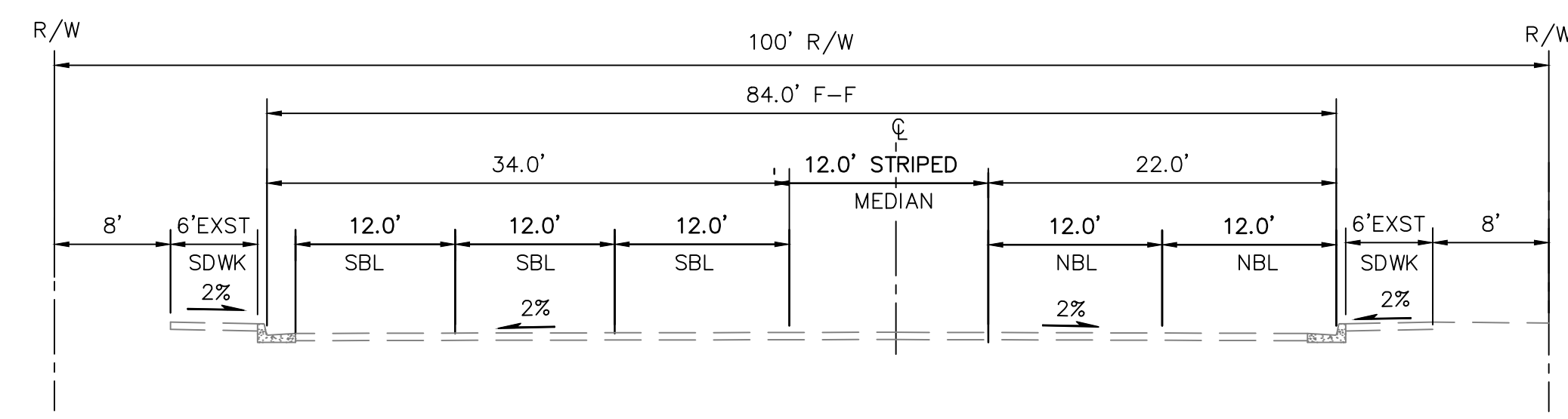
SKETCH PLAT FOR

**GLOBAL SELF STORAGE
MENAUL BLVD + UNIVERSITY BLVD
CITY OF ALBUQUERQUE
BERNALILLO COUNTY, NEW MEXICO
1-23-2018**



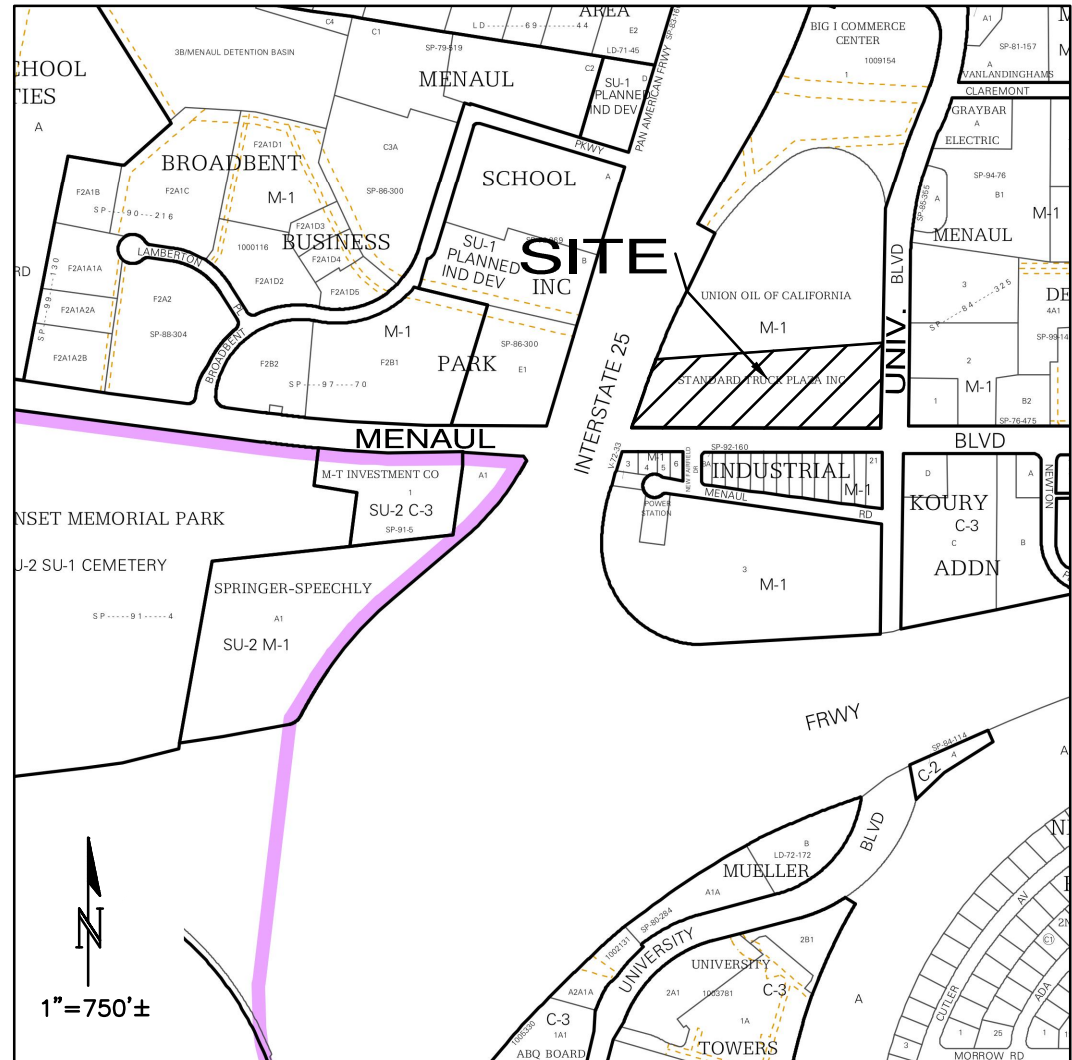
**SECTION A-A
MENAUL BLVD STREET SECTION**
SCALE: 1" = 10'

(CITY OF ALBUQUERQUE R.O.W.)

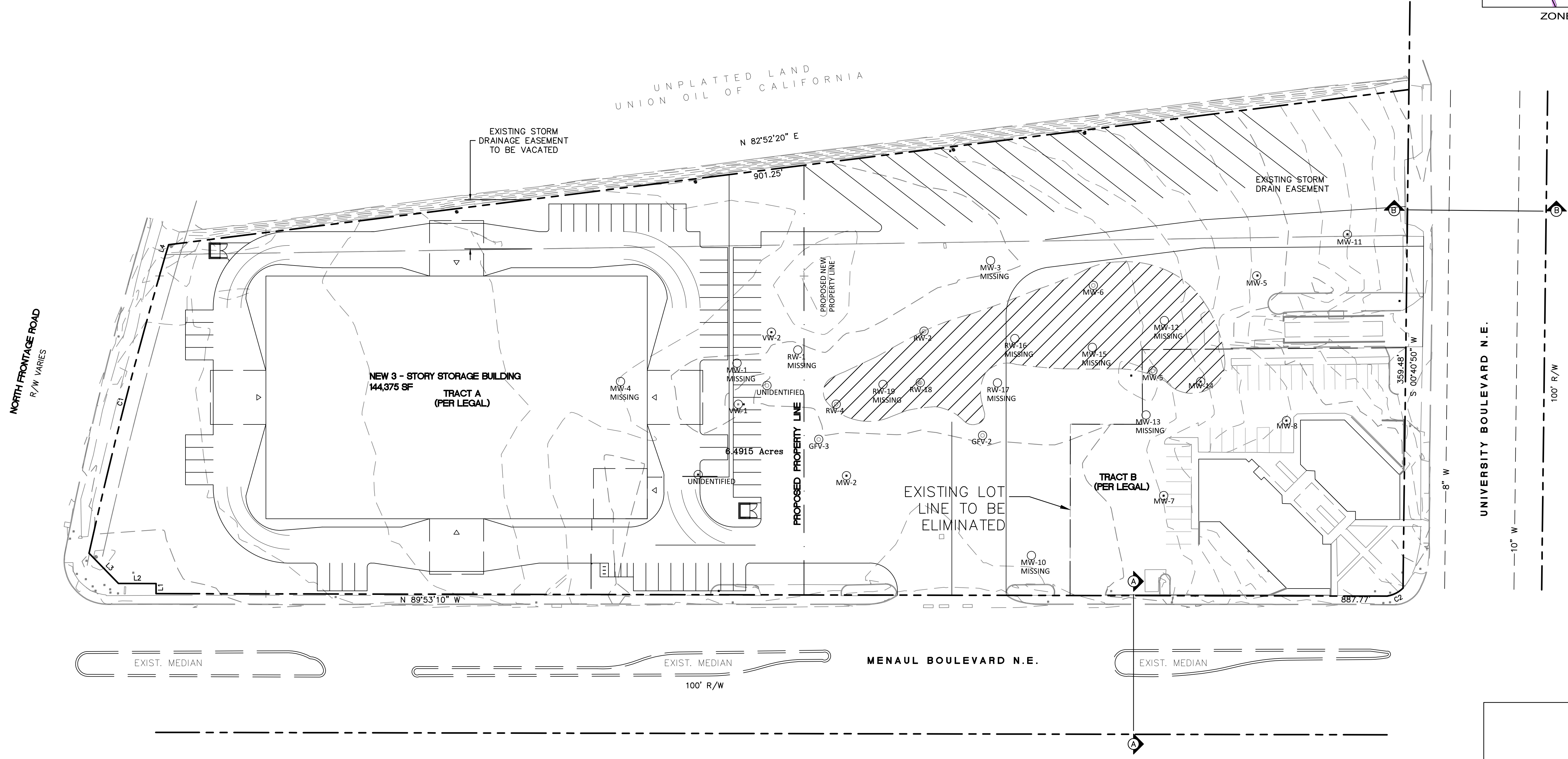


**SECTION B-B
UNIVERSITY BLVD STREET SECTION**
SCALE: 1" = 10'

(NMDOT R.O.W.)



ZONE ATLAS MAP: H-15



LEGAL DESCRIPTION

TRACT OF LAND IN SECTION 9 TION R3E IN THE S/2 SW/4 SE/4 NE/4 EXCLUDING THE SOUTHEASTERLY PORTION OUT TO R/W AT THE NW CORNER OF MENAUL & UNIVERSITY & EXCLUDING A WESTERLY PORTION OUT TO R/W AT MENAUL & I-25

NOTES

1. NUMBER OF EXISTING TRACTS: 1
2. NUMBER OF PROPOSED TRACTS: 2
3. SUBDIVISION ACREAGE: 6.4915 Ac.
4. NO WATER LINES EXISTING ALONG MENAUL BLVD. FRONTAGE EXCEPT FOR A 42" WELL TRANSMISSION LINE (NON-TAPABLE)
5. PUBLIC WATER LOOP SHALL BE OFF OF UNIVERSITY BLVD.
6. SANITARY SEWER SERVICE CONNECTION TO EXISTING 8" SAS IN MENAUL BLVD.

ISAACSON & ARFMAN, P.A.
Consulting Engineering Associates
128 Monroe Street N.E.
Albuquerque, New Mexico 87108
Ph. 505-268-8828 www.iacivil.com