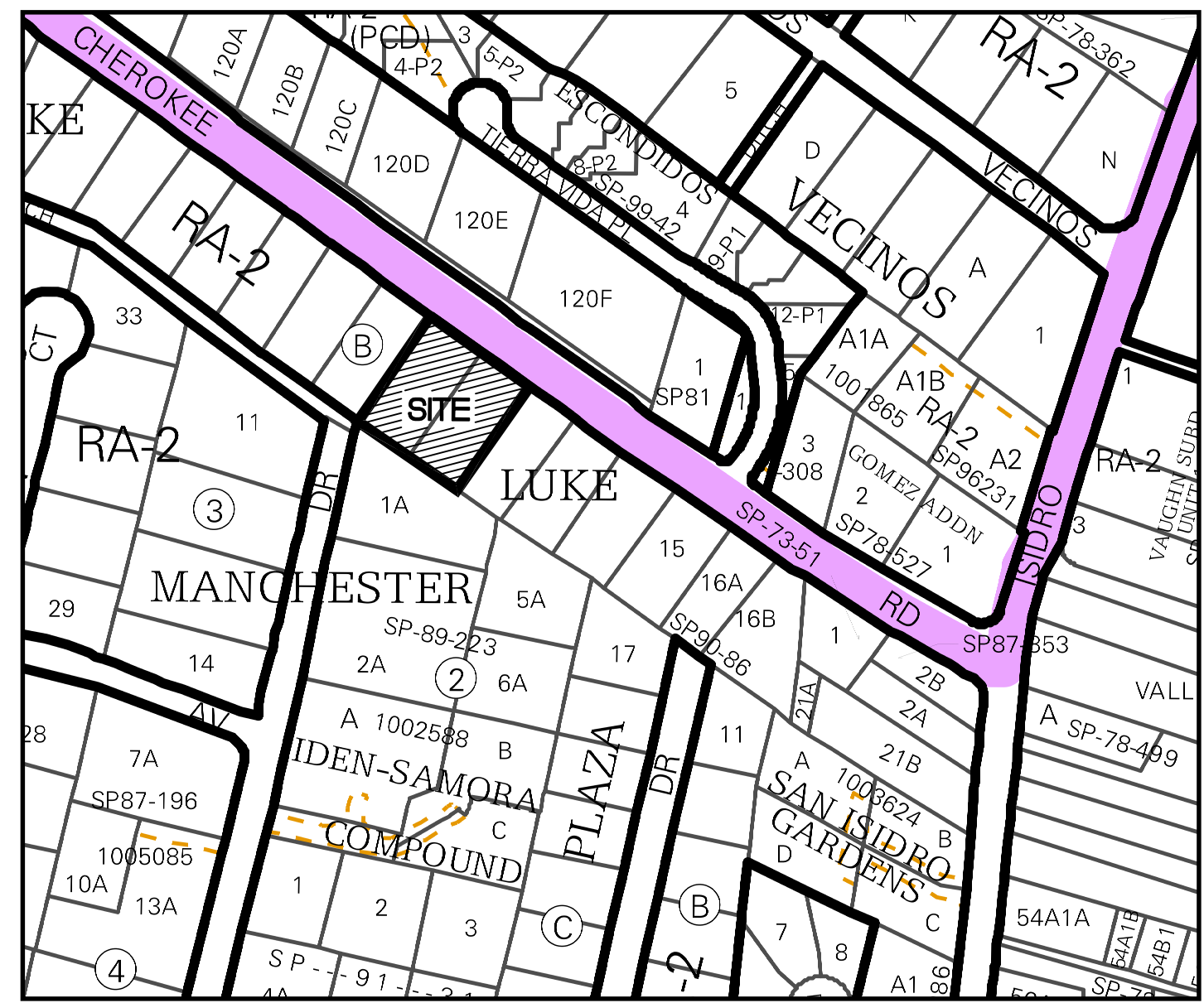


**Site Sketch for
Lots 10-A and 11-A, Block B
Being Comprised of
Lots 10 and 11, Block B
Luke Subdivision
City of Albuquerque
Bernalillo County, New Mexico
April 2018**



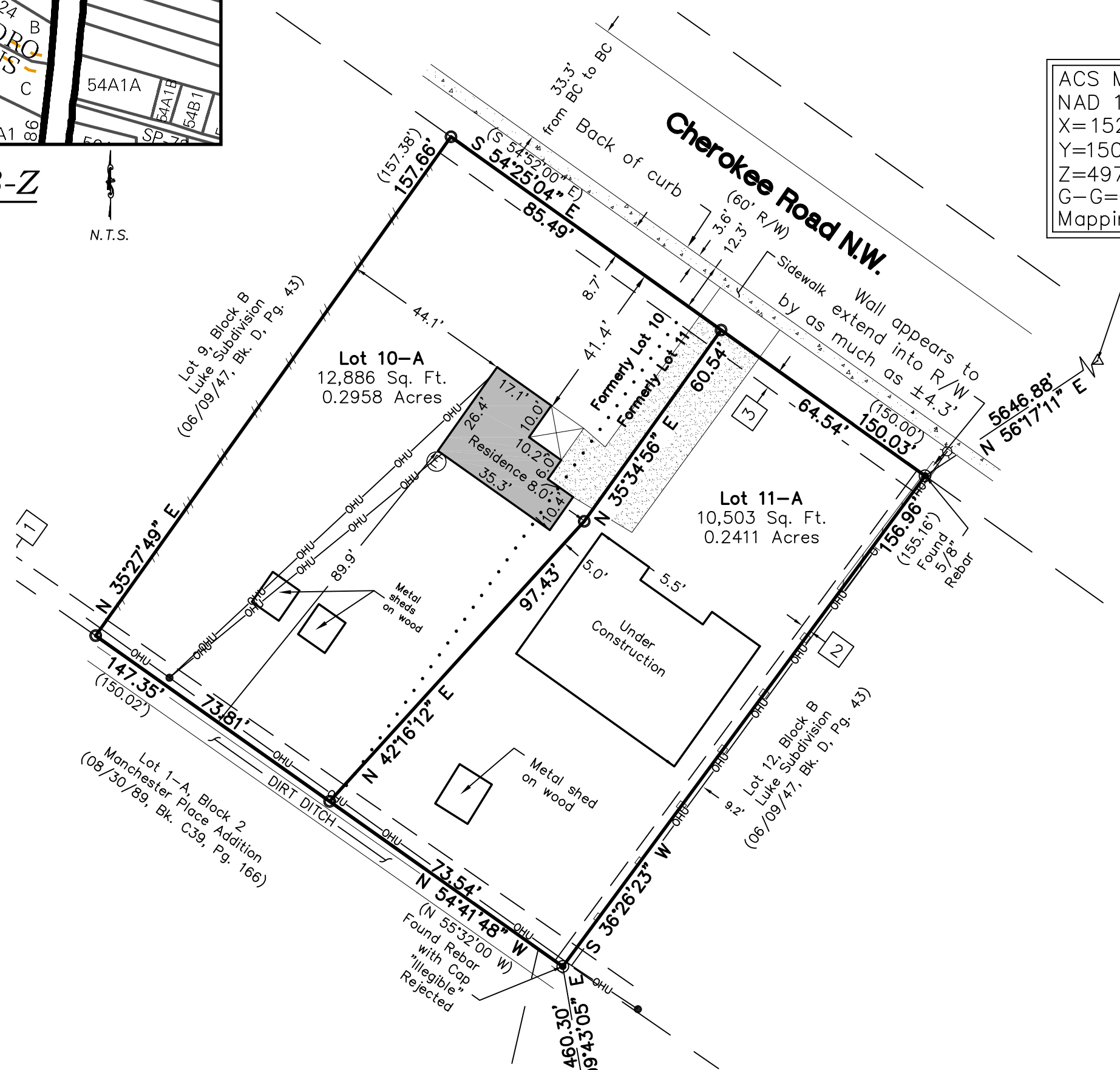
Vicinity Map - Zone Atlas G-13-Z

Purpose of Plat

1. SUBDIVIDE AS SHOWN HEREON.

Easement Notes

- 1 EXISTING 5' UTILITY EASEMENT (06/9/47, BK. D, PG. 43)
- 2 EXISTING 2.5' P.N.M. AND M.S.T. & T. CO. EASEMENT (12/03/81 BOOK MISC. 895, PAGE 222)



ACS Monument "Douglas"
NAD 1983 CENTRAL ZONE
X=1520286.421*
Y=1505417.495*
Z=4975.078* (NAVD 1988)
G-G=0.999682452
Mapping Angle=-0°13'52.53"
*U.S. SURVEY FEET

ACS Monument "6-G13AR"
NAD 1983 CENTRAL ZONE
X=1515743.949*
Y=1500719.314*
Z=0.00* (NAVD 1988)
G-G=0.999684045
Mapping Angle=-0°14'23.60"
*U.S. SURVEY FEET

Legend

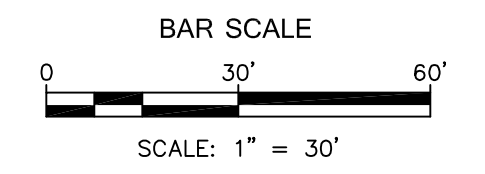
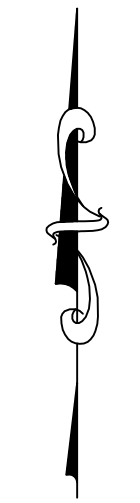
N 90°00'00" E	MEASURED BEARINGS AND DISTANCES
(N 90°00'00" E)	RECORD BEARINGS AND DISTANCES (06/09/47, D-43)
●	FOUND MONUMENT AS INDICATED
○	SET BATHEY MARKER "LS 14271" UNLESS OTHERWISE NOTED
⊠	COVERED AREA
▨	CONCRETE
▩	ASPHALT
—//—	WOOD FENCE
—□—	METAL FENCE
▨▨▨	BLOCK WALL
⊕	ELECTRIC METER
⊙	GAS METER
☆	LIGHT POLE
—OHU—	OVERHEAD UTILITY LINE
•	UTILITY POLE

Legal Description

LOT NUMBERED TEN (10) AND ELEVEN (11) IN BLOCK LETTERED "B" OF LUKE SUBDIVISION, ALBUQUERQUE, NEW MEXICO, AS THE SAME ARE SHOWN AND DESIGNATED ON THE PLAT THEREOF, FILED IN THE OFFICE OF THE COUNTY CLERK OF BERNALILLO COUNTY, NEW MEXICO, ON JUNE 9, 1947, IN PLAT BOOK D, PAGE 43.

Notes

1. FIELD SURVEY PERFORMED IN JANUARY 2018.
2. ALL DISTANCES ARE GROUND DISTANCES: US SURVEY FOOT.
3. THE BASIS OF BEARINGS REFERENCES MODIFIED NEW MEXICO STATE PLANE COORDINATES (NAD 83-GROUND) USING GROUND TO GRID FACTOR OF 0.9996832485.
4. LOT LINES TO BE ELIMINATED SHOWN HEREON AS



CARTESIAN SURVEYS INC.
P.O. BOX 44414 RIO RANCHO, N.M. 87174
Phone (505) 896 - 3050 Fax (505) 891 - 0244