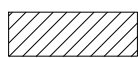
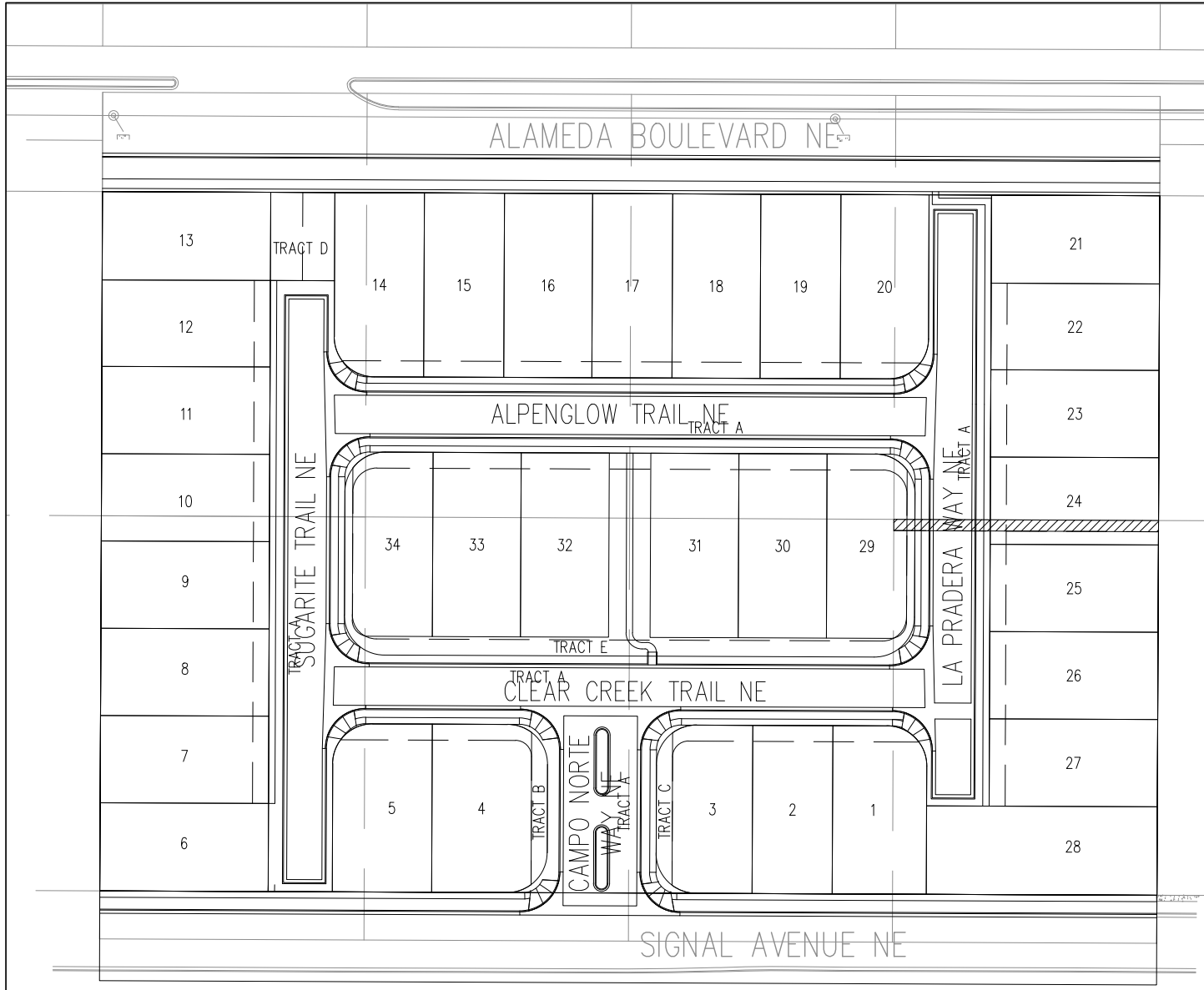
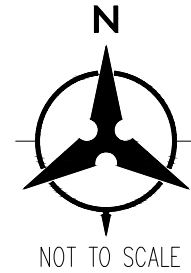


EXHIBIT "C"
CAMPO DEL NORTE
VACATION EXHIBIT
MAY 2018



EXISTING 7' PNM AND MST&T EASEMENT (10/9/1979, BK, MISC. 723, PG 604) TO BE VACATED WITH THIS PLAT. THE EASEMENT WAS FOR AN OVERHEAD LINE THAT SERVED THE SITE. THE LINE HAS BEEN REMOVED FROM THE SITE. THEREFORE, THE EASEMENT IS NO LONGER REQUIRED.