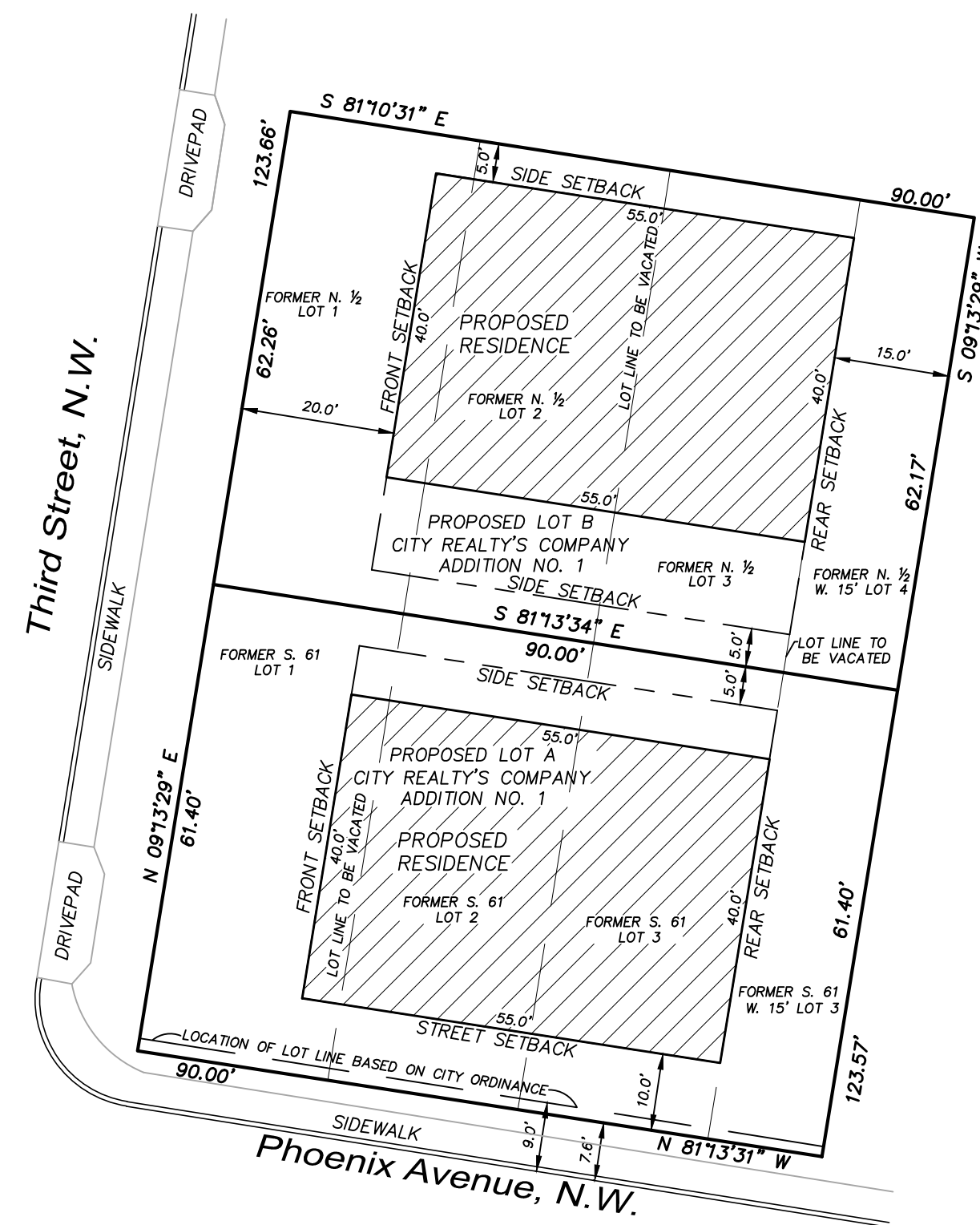
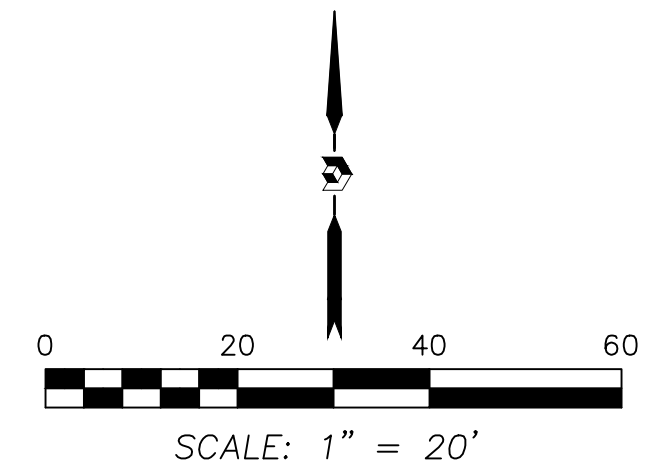


Sketch Plat

Proposed Lots A and B, Block 3 City Realty's Company Addition No. 1

Albuquerque, Bernalillo County, New Mexico
March 2018



PRECISION
SURVEYS, INC.

OFFICE LOCATION:
9200 San Mateo Boulevard, NE
Albuquerque, NM 87113

505.856.5700 PHONE
505.856.7900 FAX