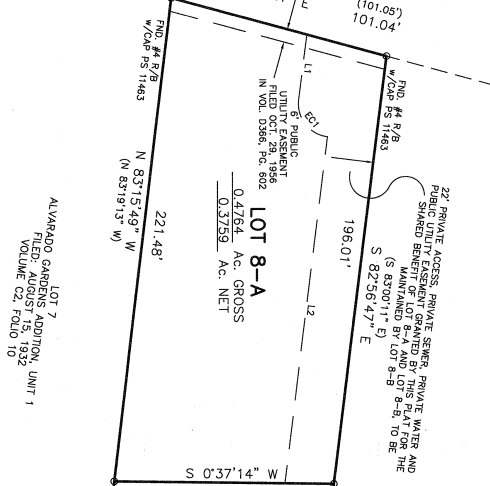
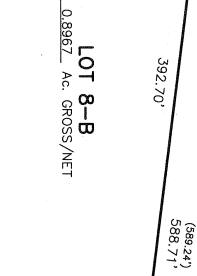


RIO GRANDE BOULEVARD
60' R/W
N 15°08'57" E
N 15°12'21" E
(101.05')
101.04'



ALVARADO GARDENS ADDITION, UNIT 1
FILED: AUGUST 15, 1932
VOLUME C2, FOLIO 10

NORTH 1/2 LOT 8
ALVARADO GARDENS ADDITION, UNIT 1
FILED: AUGUST 15, 1932
VOLUME C2, FOLIO 10



LOT 11
ALVARADO GARDENS ADDITION, UNIT 1
FILED: AUGUST 15, 1932
VOLUME C2, FOLIO 10

CAMPBELL
R/W VARIES
S 13°13'33" E
S 13°16'57" E
R/PD #4 R/B
R/W/CD# 1S 3516
R/PD #5 R/B
R/W/CD# 1S 3516
R/PD #6 R/B
R/W/CD# 1S 11483

PLAT OF
LOTS 8-A & 8-B
UNIT 1
ALVARADO GARDENS
WITHIN
TOWN OF ALBUQUERQUE GRANT
PROJECTED SECTION 18, T.10N., R.3E., N.M.P.M.
CITY OF ALBUQUERQUE
BERNALILLO COUNTY, NEW MEXICO
MAY, 2018

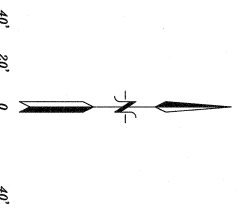
BLANKET GRANTING EASEMENT NOTE
A BLANKET GRANTING EASEMENT GRANTED BY THIS PLAT BY LOT 8-A AND 8-B FOR THE EASEMENT TO BE MAINTAINED BY LOTS 8-A AND 8-B.

LINE TABLE

| | | |
|------|---------------|----------|
| LINE | BEARING | DISTANCE |
| 1 | S 82°56'47" E | 80.00 |
| 2 | S 82°56'47" E | 1158.79 |

CURVE TABLE

| NUMBER | DELTA ANGLE | CHORD DIRECTION | RADIUS | ARC LENGTH | CHORD LENGTH |
|--------|-------------|-----------------|--------|------------|--------------|
| C1 | 48°27'31" | S 11°30'17" W | 70.10 | 60.51 | 158.65 |
| C2 | 48°27'30" | S 11°26'53" W | 70.10 | 60.51 | 158.65 |
| C3 | 80°00'00" | N 5°20'31.5" E | 15.00 | 23.58 | 21.21 |



AGS STATION: 07-41151
R/PD #1 R/B
R/W/CD# 1S 3516
R/PD #2 R/B
R/W/CD# 1S 3516
R/PD #3 R/B
R/W/CD# 1S 3516
R/PD #4 R/B
R/W/CD# 1S 11483
R/PD #5 R/B
R/W/CD# 1S 3516
R/PD #6 R/B
R/W/CD# 1S 11483
ELEVATION = 4.964354 US SURVEY FEET
MAYD 1989

