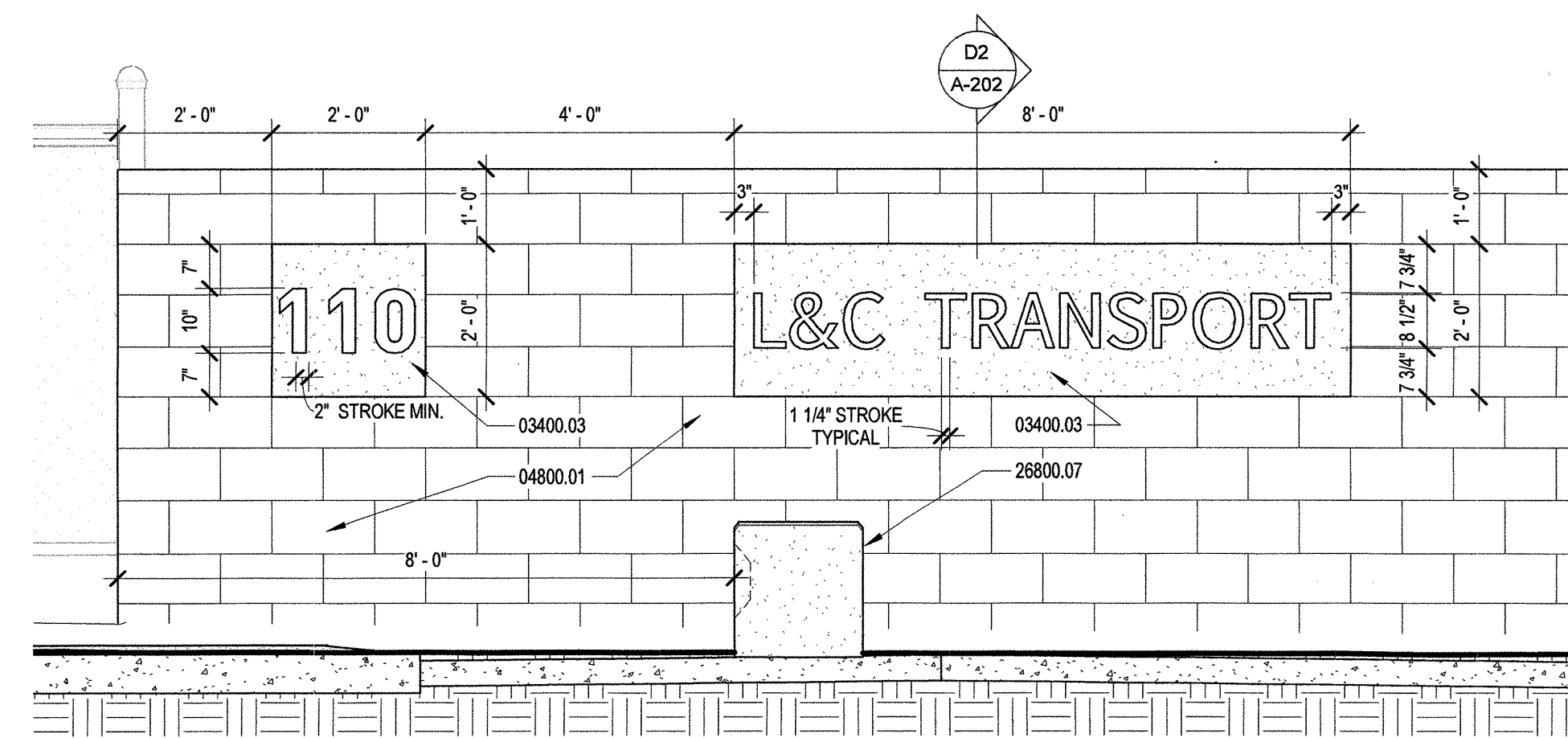
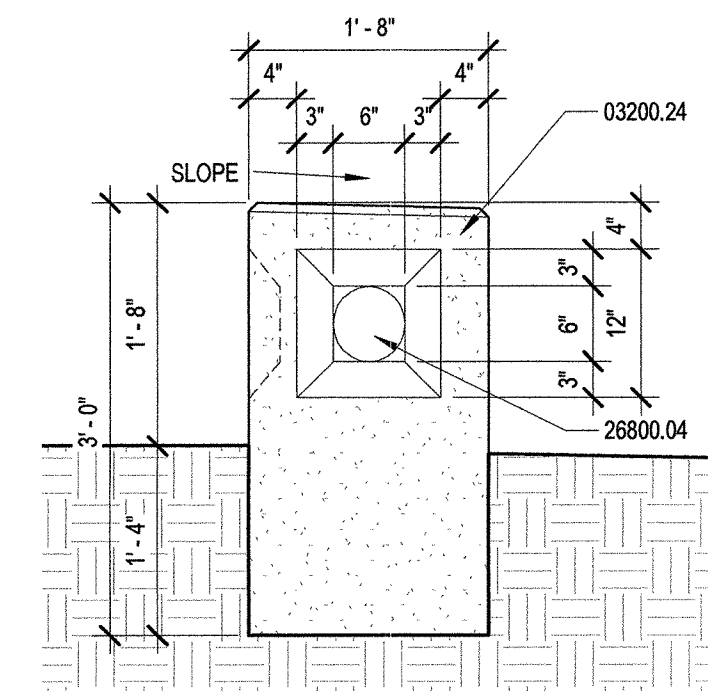


D2 WALL SECTION @ SIGN
1/2" = 1'-0"

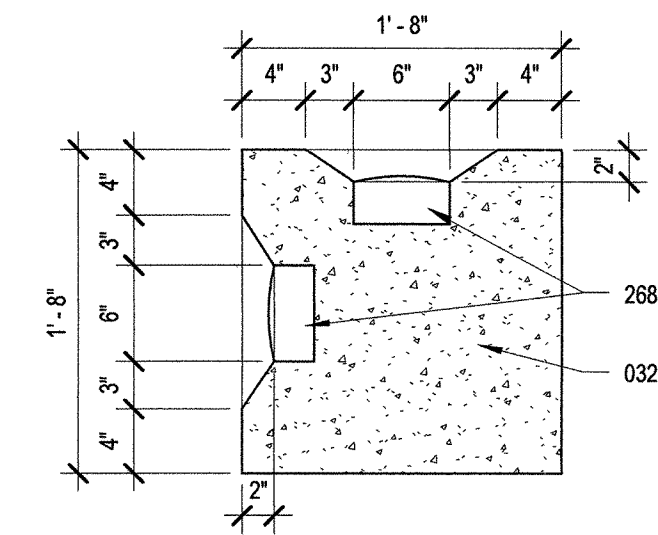


PER COA ZONING SECTION 14-16-3-5 (A-4-g)
"PERMANENT IDENTIFICATION SIGNS",
20 SF MAXIMUM AREA OF SIGN ALLOWED.
2'-0" X 8'-0" = 16 SF
16 SF < 20SF, THEREFORE OK.

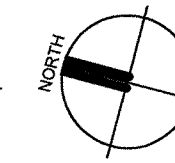
D3 SIGN ELEVATION
1/2" = 1'-0"



C3 LIGHT BOLLARD ELEVATION
3/4" = 1'-0"



C4 LIGHT BOLLARD PLAN
1" = 1'-0"



KEYED NOTES:

- 03200.24 3,000 PSI AIR ENTRAINED CONCRETE BOLLARD, CHAMFER TOP EDGE ALL AROUND. SLOPE TOP 1/2 MIN.
- 03400.03 PRE-CAST CONCRETE SIGN: 2" THICK CONCRETE PANEL WITH RECESSED LETTERS CAST 1" DEEP.
- 04800.01 NEW 6" HIGH CMU WALL, 8"X8"X16" CMU BLOCK WITH 4" X 8" X 16" CAP BLOCK. DARK GRAY COLOR (PETRO BLACK BY CREGO).
- 04800.02 4" X 8" X 16" SOLID CAP BLOCK.
- 04800.10 6" X 8" X 16" CMU.
- 26800.04 RECESSED EXTERIOR LIGHT FIXTURE SEE ELECTRICAL.
- 26800.07 CONCRETE LIGHT BOLLARD.

LEE GAMELSKY ARCHITECTS P.C. 2412 MILES ROAD SE ALBUQUERQUE, NM 87106 505.842.8865 FAX 842.1693 lee@lgame.com	
---	--

L&C TRANSPORT OFFICE AND SHOP

108 94th St. NW, Albuquerque, New Mexico 87121

PROJECT ARCHITECT: LEE GAMELSKY, AIA	Project #: Date: 30 APRIL 2018
---	-----------------------------------

SIGNAGE

By: WTB	Sheet: 7 Of 7
SITE DEVELOPMENT PLAN	A-202