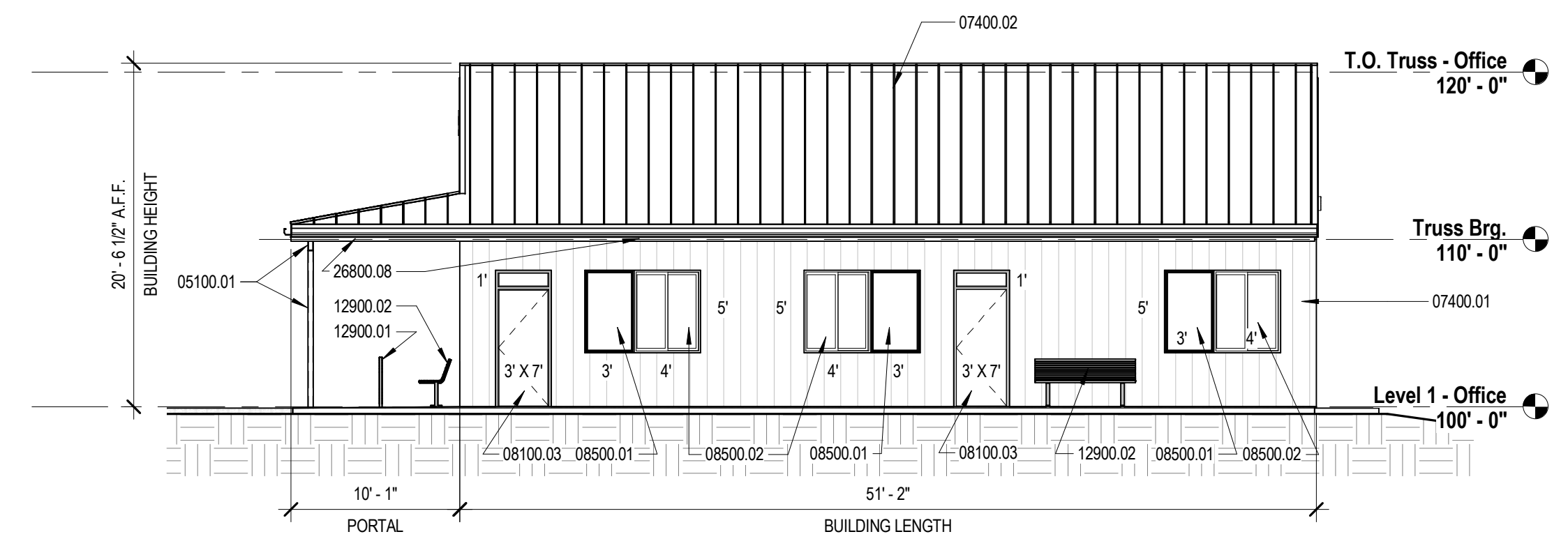


GENERAL NOTE: EXTERIOR LIGHT FIXTURES

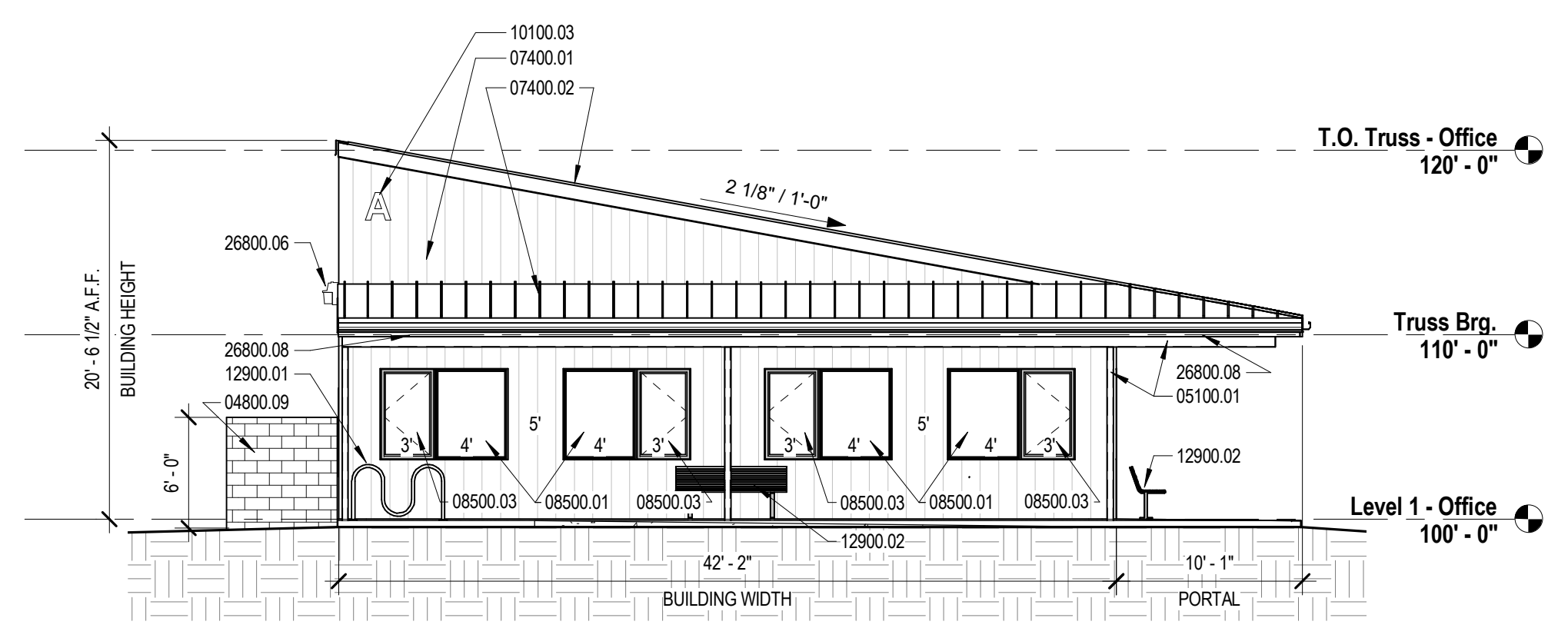
LIGHT FIXTURES SHALL HAVE FULL CUT-OFF SHIELDS SO THAT NO FUGITIVE LIGHT ESCAPES BEYOND THE PROPERTY LINE. ALL LIGHT FIXTURES SHALL BE SHIELDED ACCORDINGLY.

KEYED NOTES:

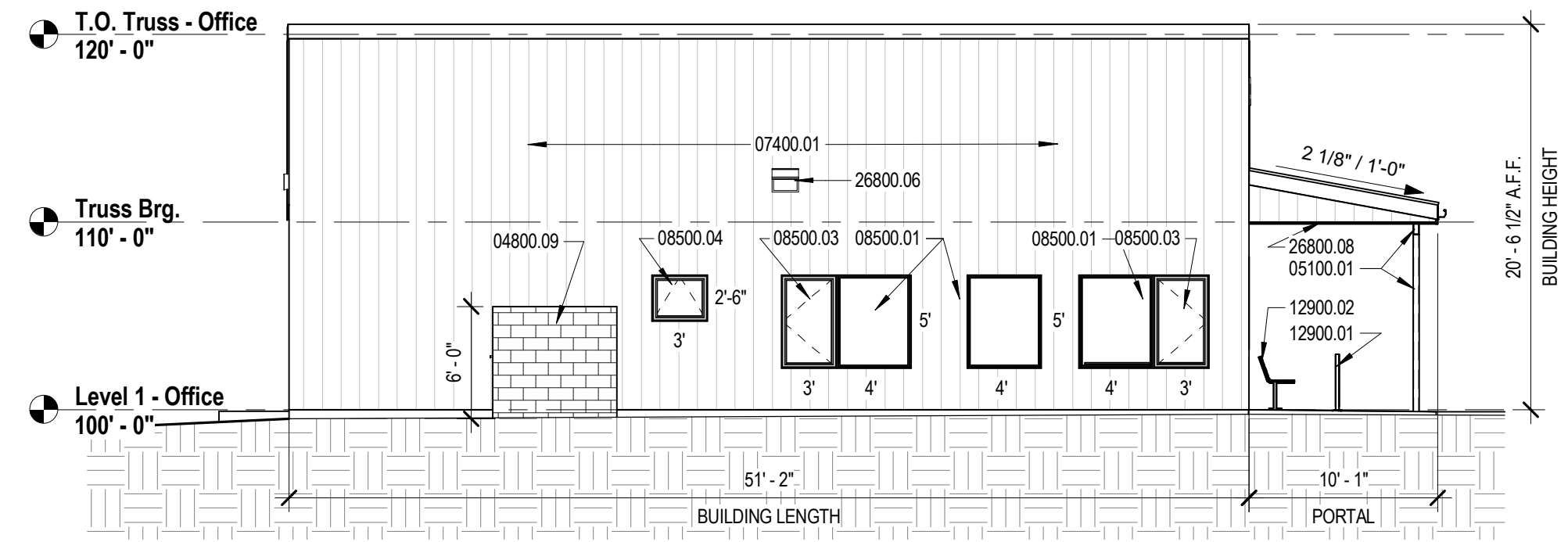
- 03200.22 6" THICK 4,000 PSI CONCRETE SLAB WITH 3/4" AGGREGATE AND 6X6 - 10/10 WMM.
- 04800.02 4" X 8" X 16" SOLID CAP BLOCK.
- 04800.07 CMU REFUSE ENCLOSURE, 8" X 8" X 16" CMU BLOCK WITH 4" X 8" X 16" CAP BLOCK. DARK GRAY COLOR (PETRO BLACK BY CREGO).
- 04800.09 MECHANICAL EQUIPMENT SCREEN, 8"X8"X16" CMU, DARK GRAY COLOR (PETRO BLACK BY CREGO), 6'-0" HIGH ABOVE FINISH GRADE.
- 05100.01 STEEL COLUMNS (TYPICAL OF 3) AND STEEL BEAM, PRIME AND PAINT DARK GRAY.
- 05500.15 6" Ø X 7'-0" LONG STEEL PIPE BOLLARD FILLED WITH CONCRETE, TYPICAL. PRIME AND PAINT YELLOW.
- 05500.18 HSS 6X6 CONCRETE FILLED GATE POST. FILL WITH CONCRETE AND WELD STEEL PLATE ON TOP. PRIME AND PAINT DARK GRAY.
- 07400.01 VERTICAL METAL WALL PANELS: 12" WIDE X 22 GA. FIRESTONE "UC-500" FLUSH PANEL SYSTEM. SILVER / GRAY COLOR.
- 07400.02 METAL ROOF PANELS: STANDING SEAM METAL ROOF, SILVER / GRAY COLOR.
- 08100.01 METAL DOOR IN HOLLOW METAL FRAME. SEE DOOR SCHEDULE. ATTACH FRAME TO CMU WITH MASONRY ANCHORS. PRIME AND PAINT DARK GRAY.
- 08100.02 HOLLOW METAL GATE WITH HEAVY DUTY HINGES WELDED TO STEEL PIPE. PRIME AND PAINT DARK GRAY.
- 08100.03 HOLLOW METAL DOOR AND FRAME WITH FIXED TRANSOM WINDOW. PRIME AND PAINT SILVER.
- 08500.01 FIXED ALUMINUM CLAD WOOD WINDOW, SILVER FRAME COLOR.
- 08500.02 OPERABLE ALUMINUM CLAD WOOD WINDOW (SLIDING), SILVER FRAME COLOR.
- 08500.03 OPERABLE ALUMINUM CLAD WOOD WINDOW (CASEMENT), SILVER FRAME COLOR.
- 08500.04 OPERABLE WINDOW (AWNING), SILVER FRAME COLOR.
- 10100.03 BUILDING I.D. LETTER, 18" HIGH LETTER WITH MINIMUM 3" STROKE. I.D. LETTER SHALL HAVE A CONTRASTING COLOR (PURPLE) TO THE BUILDING MATERIAL. IT IS MOUNTED ON AND SHALL BE CLEARLY DISTINGUISHABLE FROM THE FIRE APPARATUS ACCESS ROAD.
- 10100.06 MOTORCYCLE PARKING SIGN.
- 12900.01 BIKE RACK. SEE DETAILS ON SHEET AS-101. BASIS OF DESIGN IS SITESCAPES ECHO BIKE RACK "E22-35-SM" SURFACE MOUNTED (S) BIKE TUBE RACK OR EQUAL.
- 12900.02 BENCH.
- 26800.06 WALL MOUNTED LIGHT FIXTURE. SEE ELECTRICAL.
- 26800.08 LIGHT FIXTURE LOCATED BELOW STRUCTURE.
- 32100.04 MOTORCYCLE PARKING SPACE, 4'-0" WIDE X 8'-0" LONG, MINIMUM.



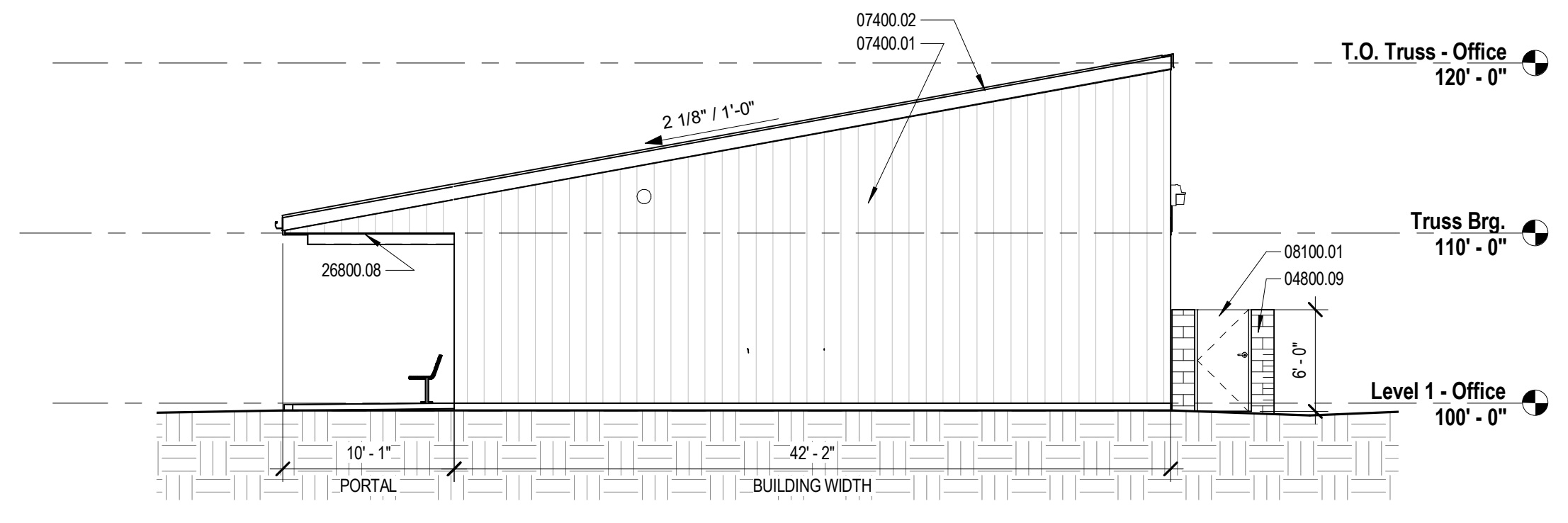
D1 South Elevation - Office
1/8" = 1'-0"



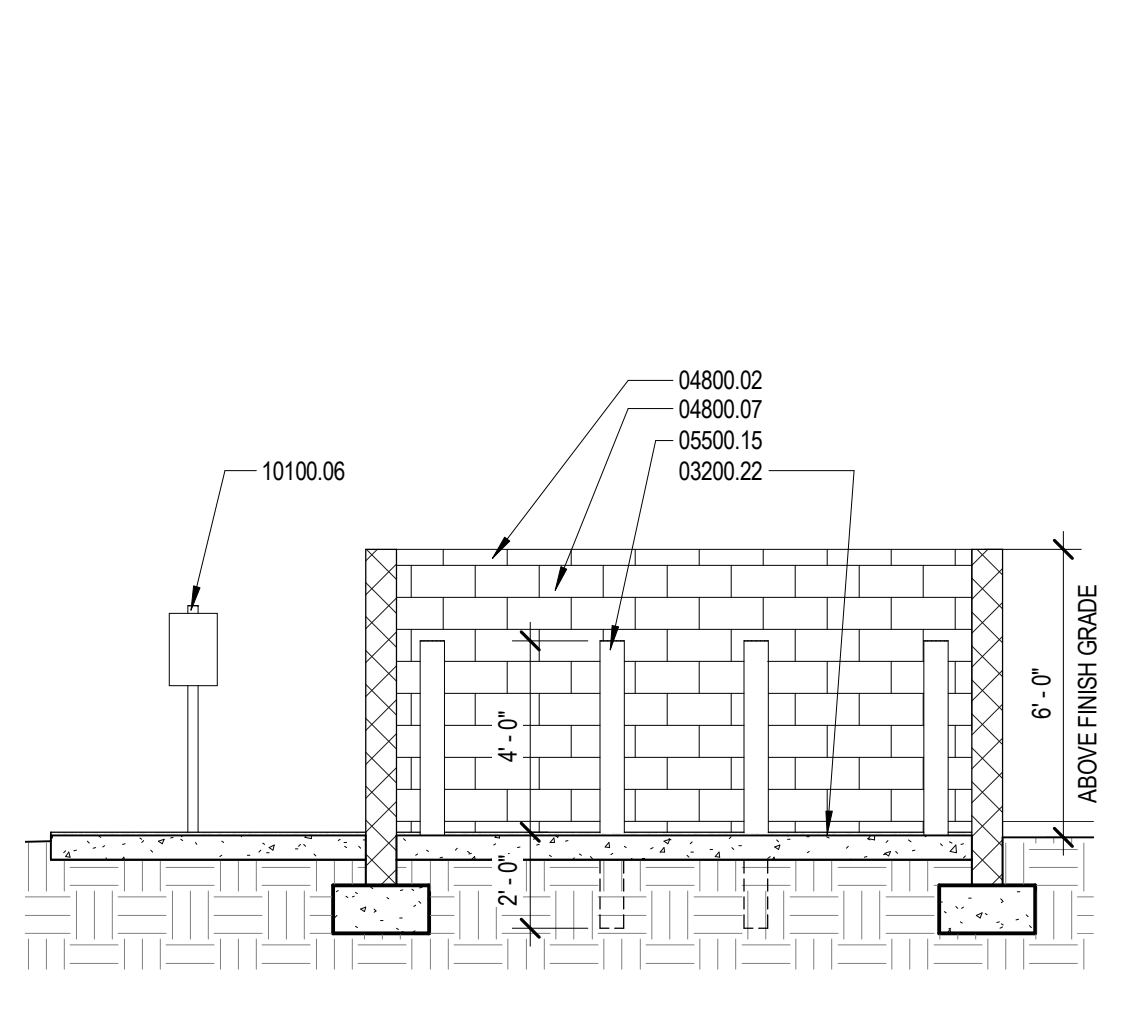
D3 West Elevation - Office
1/8" = 1'-0"



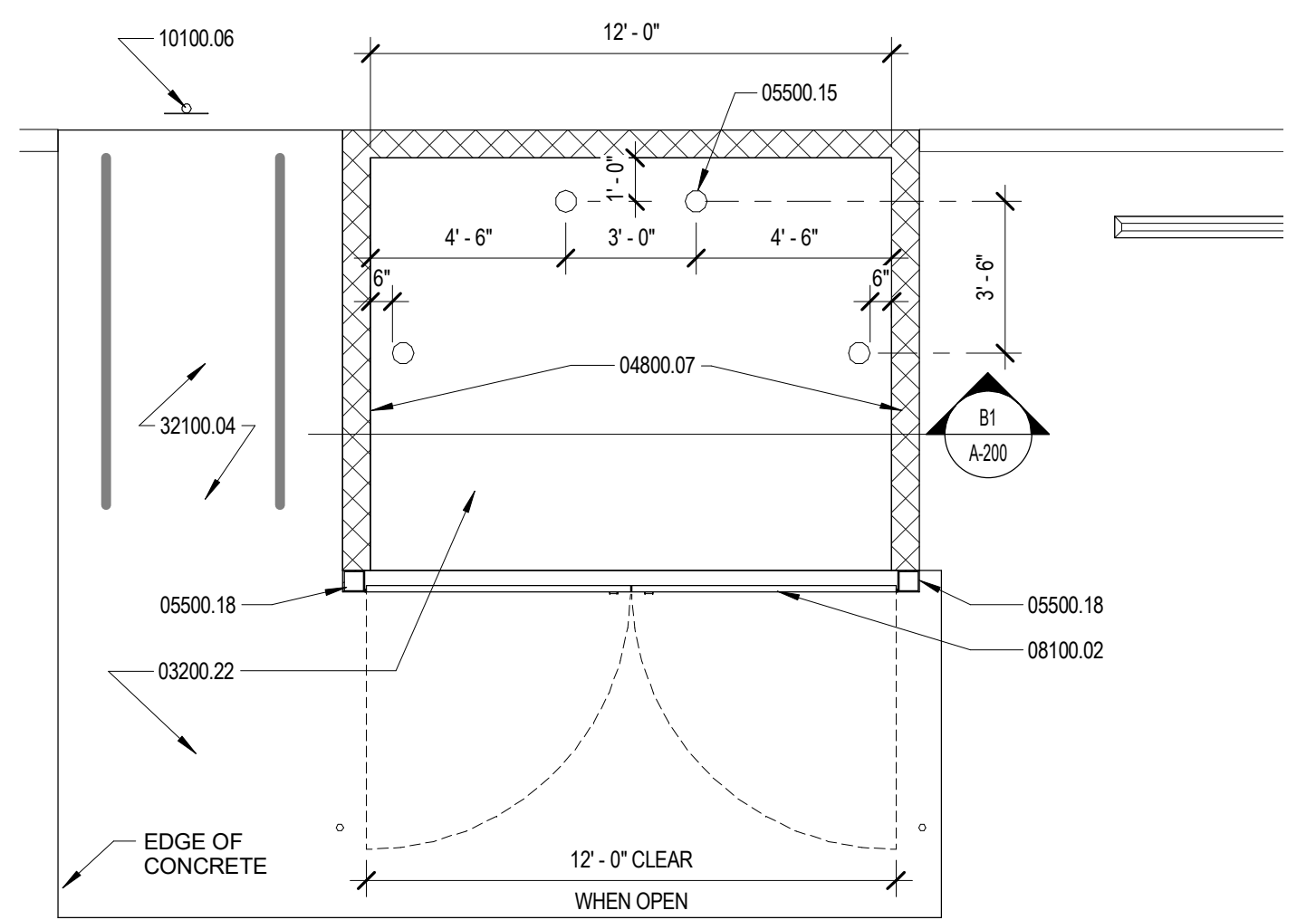
C1 North Elevation - Office
1/8" = 1'-0"



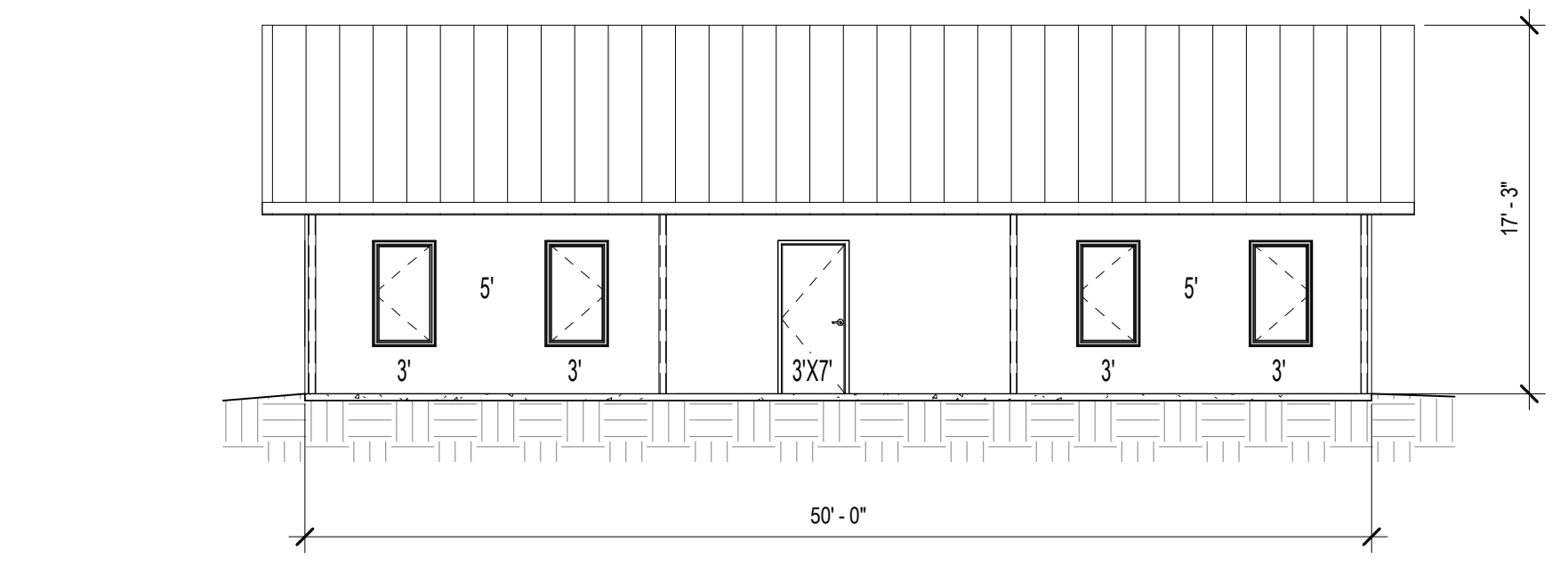
C3 East Elevation - Office
1/8" = 1'-0"



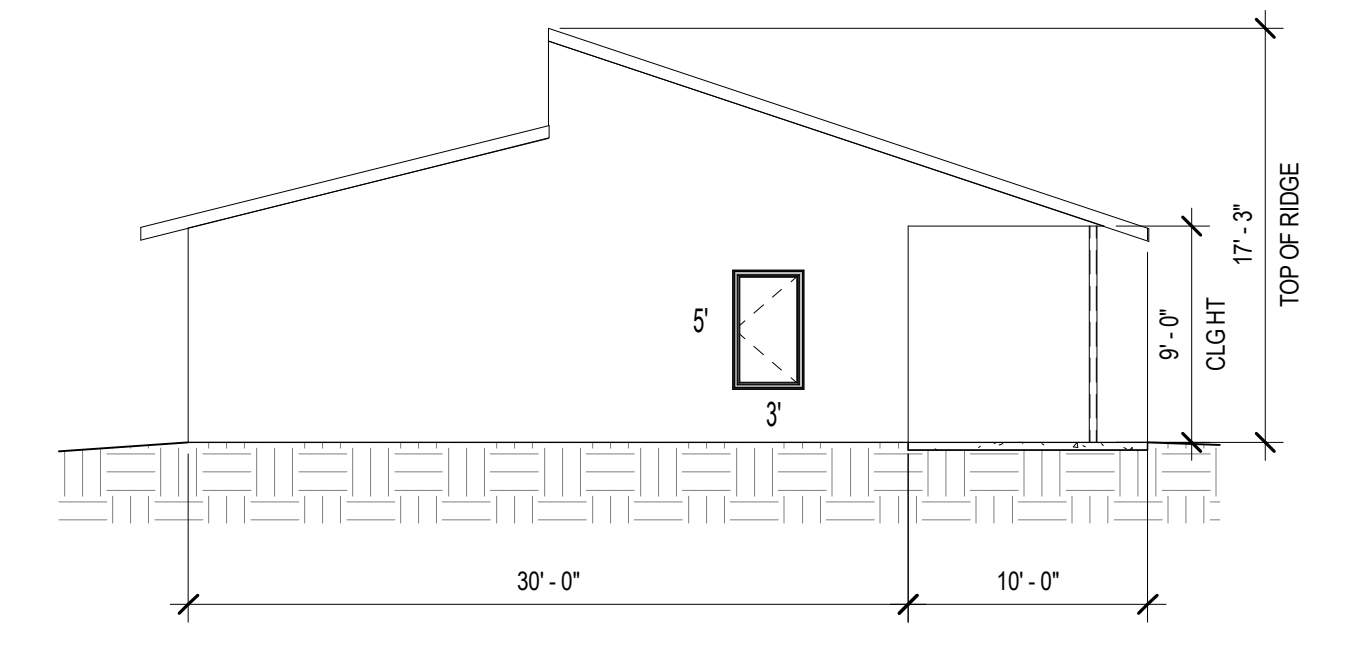
B1 Refuse Enclosure Section
1/4" = 1'-0"



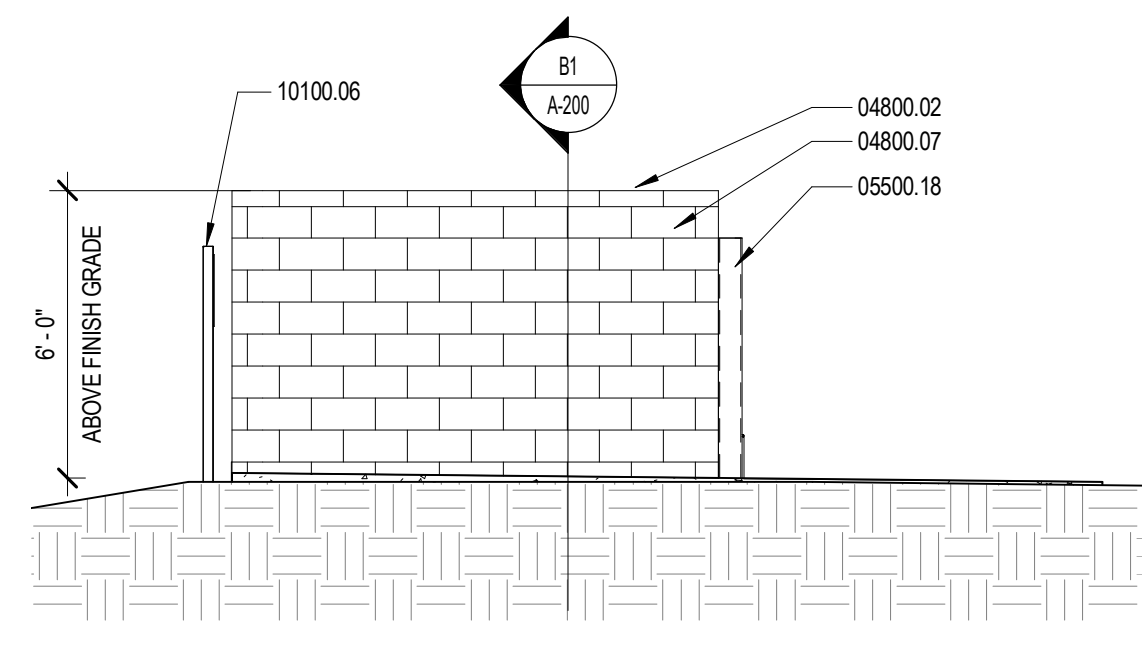
B2 Refuse Enclosure Plan
1/4" = 1'-0"



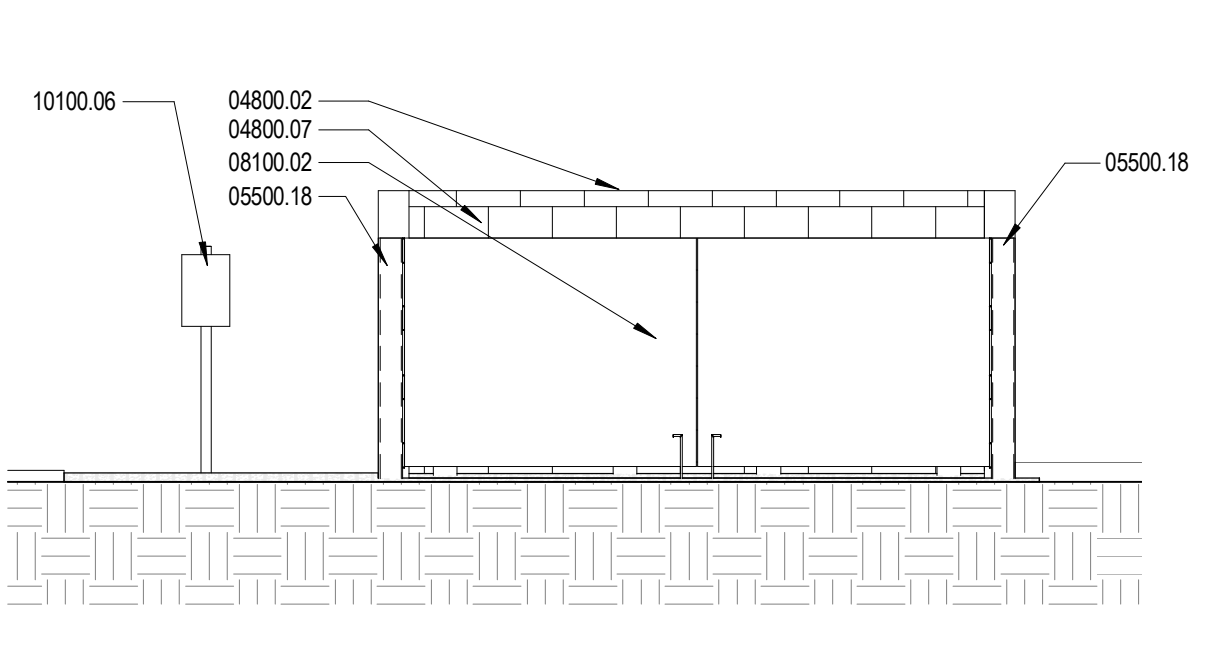
B3 FUTURE CARETAKER RESIDENCE - SOUTH ELEVATION
1/8" = 1'-0"



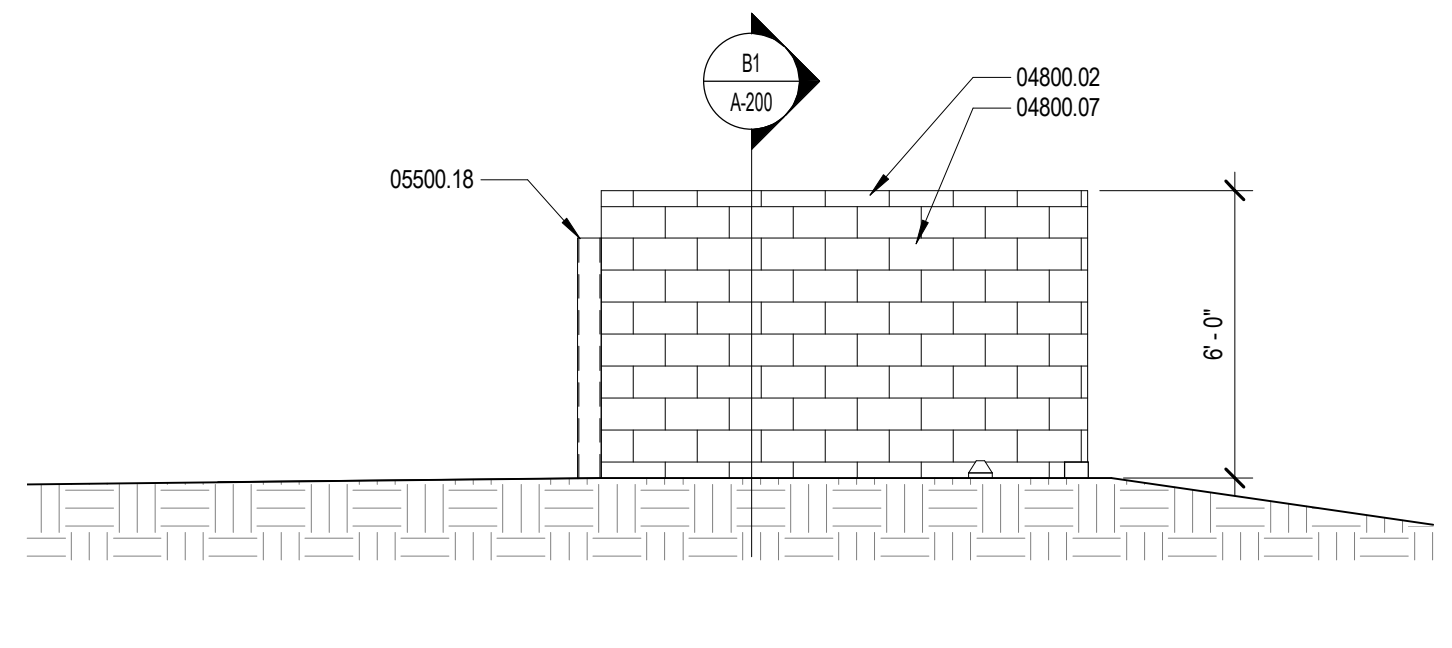
B4 FUTURE CARETAKER RESIDENCE - WEST ELEVATION
1/8" = 1'-0"



A1 North Elevation - Refuse Enclosure
1/4" = 1'-0"



A2 West Elevation - Refuse Enclosure
1/4" = 1'-0"



A3 South Elevation - Refuse Enclosure
1/4" = 1'-0"

LEE GAMELSKY ARCHITECTS P.C.

2412 MILES ROAD SE
ALBUQUERQUE, NM 87106
505.842.8865 FAX 842.1693
lee@gamem.com

STATE OF NEW MEXICO
LEE D. GAMELSKY
No. 1931
REGISTERED ARCHITECT

L&C TRANSPORT OFFICE AND SHOP
108 94th St. NW, Albuquerque, New Mexico 87121

PROJECT ARCHITECT: LEE GAMELSKY, AIA
PROJECT ARCHITECT: LEE GAMELSKY, AIA
SITE DEVELOPMENT PLAN FOR BUILDING PERMIT
DRB PROJECT NO.: 1011638

PROJECT ARCHITECT: LEE GAMELSKY, AIA
PROJECT ARCHITECT: LEE GAMELSKY, AIA
DATE: 12 JUNE 2018

EXTERIOR ELEVATIONS - OFFICE BLDG & REFUSE ENCLOSURE

By: WTB
SITE DEVELOPMENT PLAN

Sheet: Of:
A-200

6/12/2018 6:02:15 PM