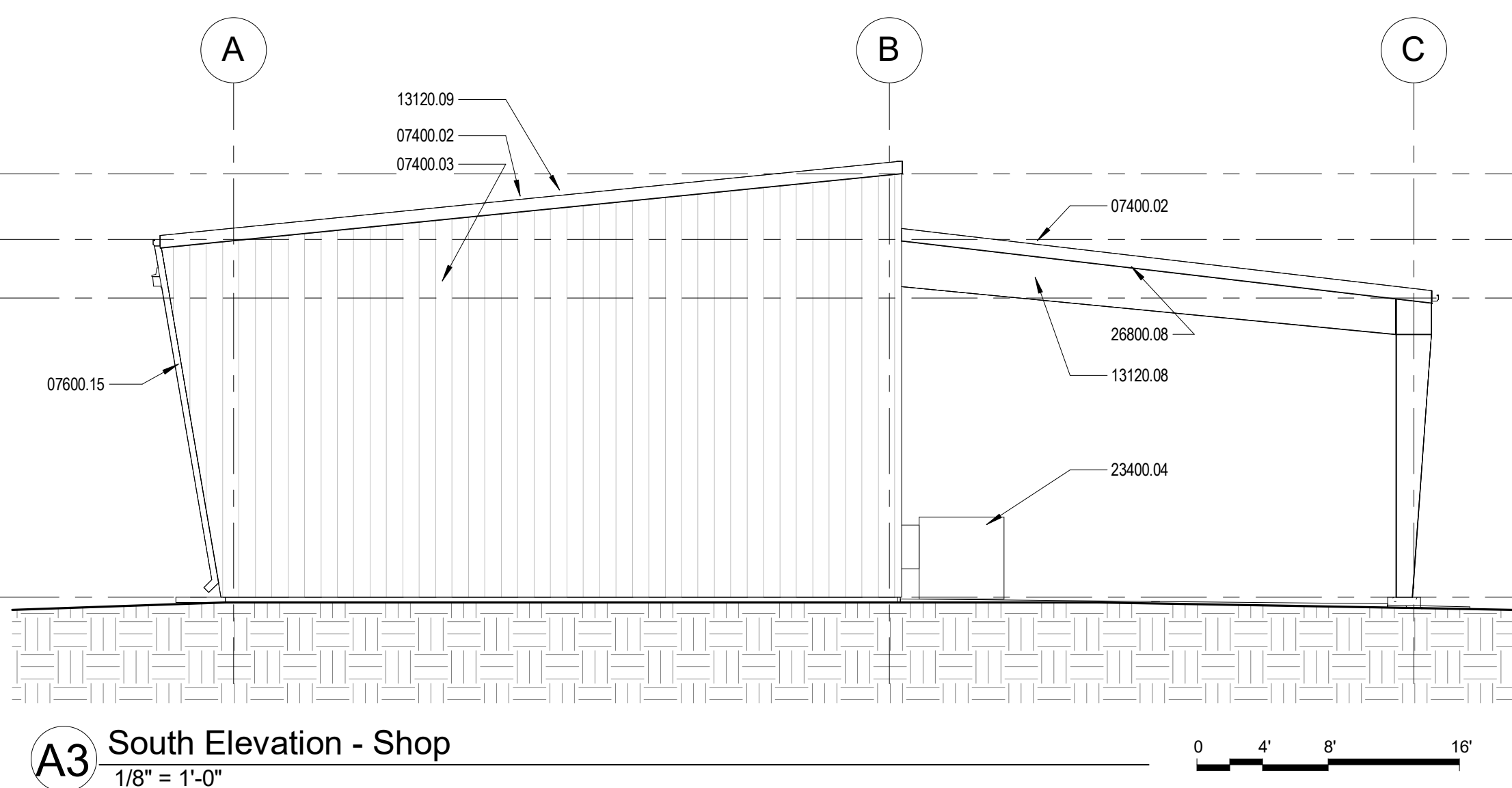
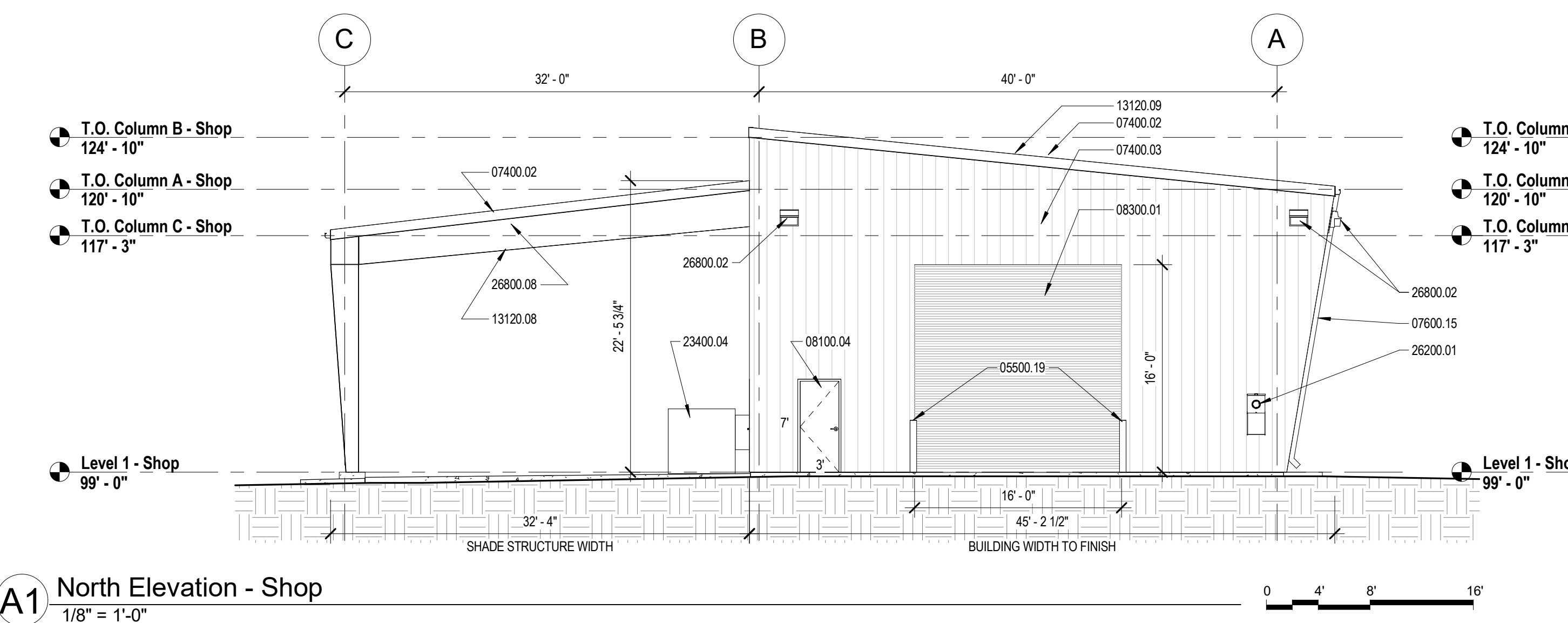
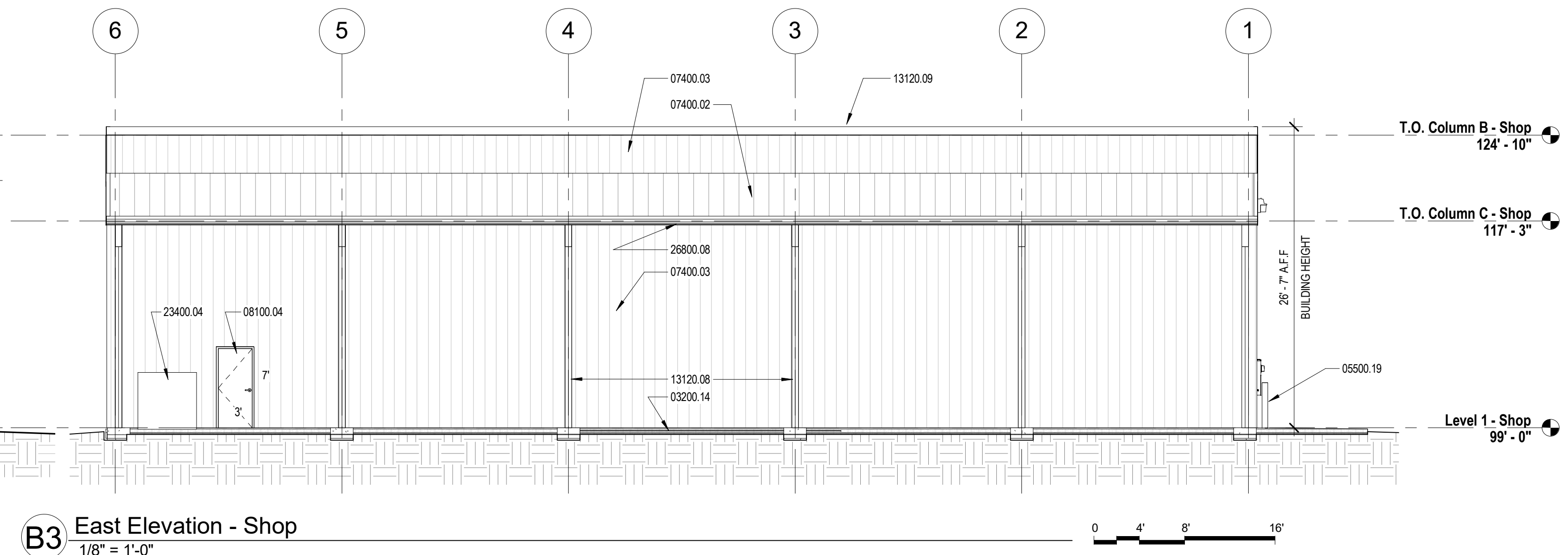
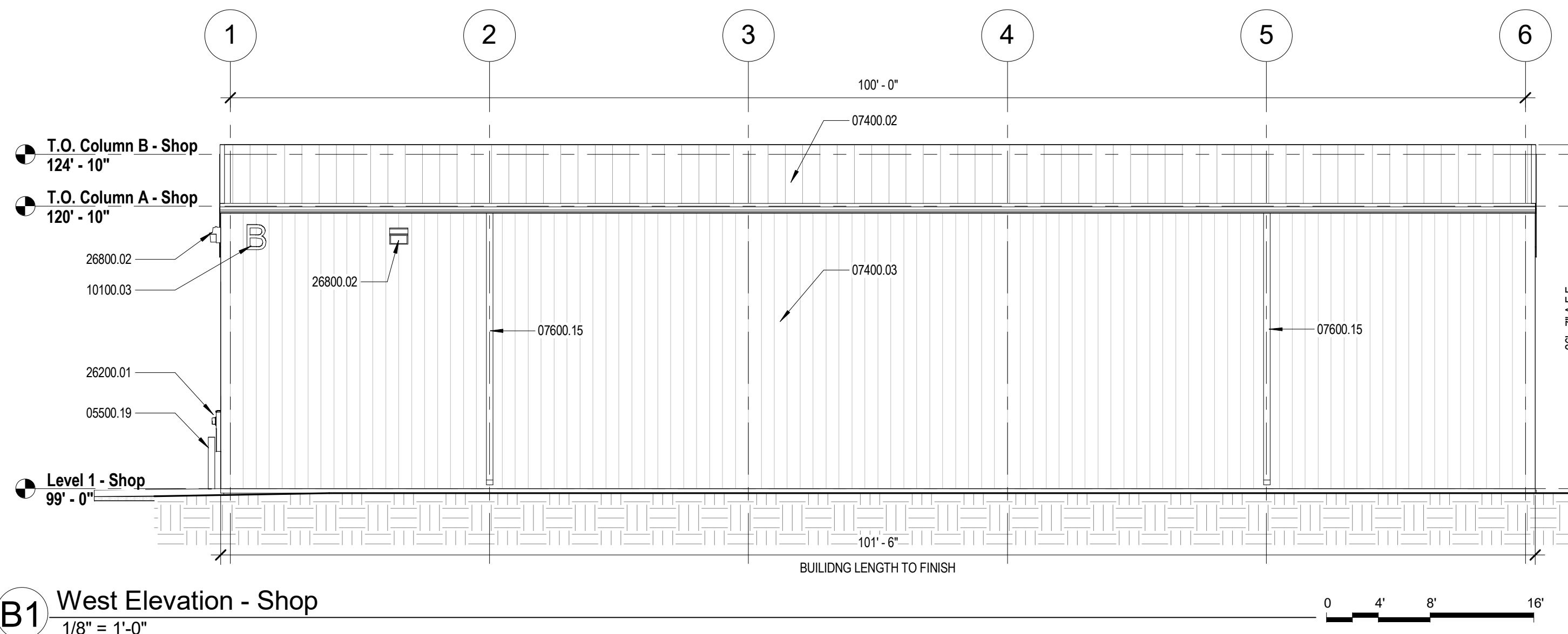
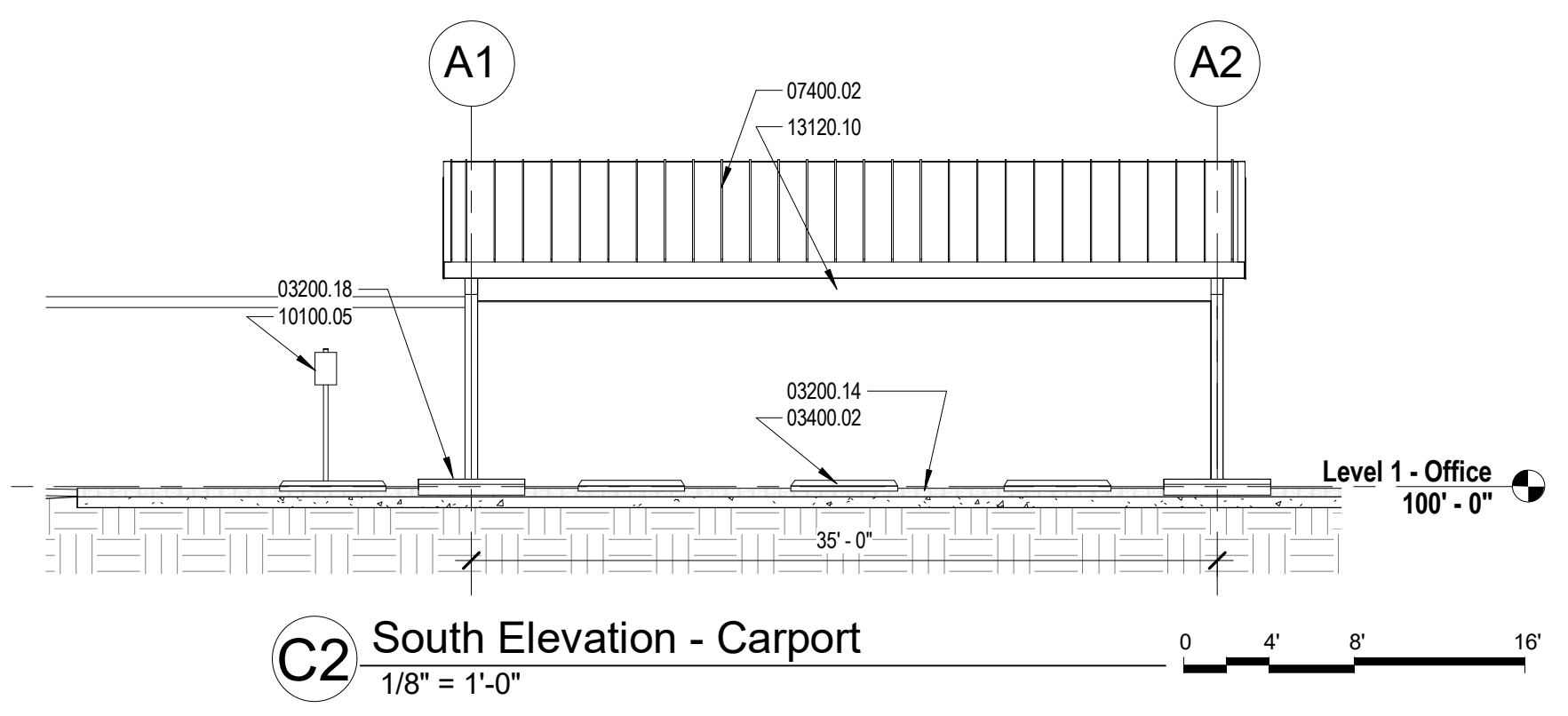
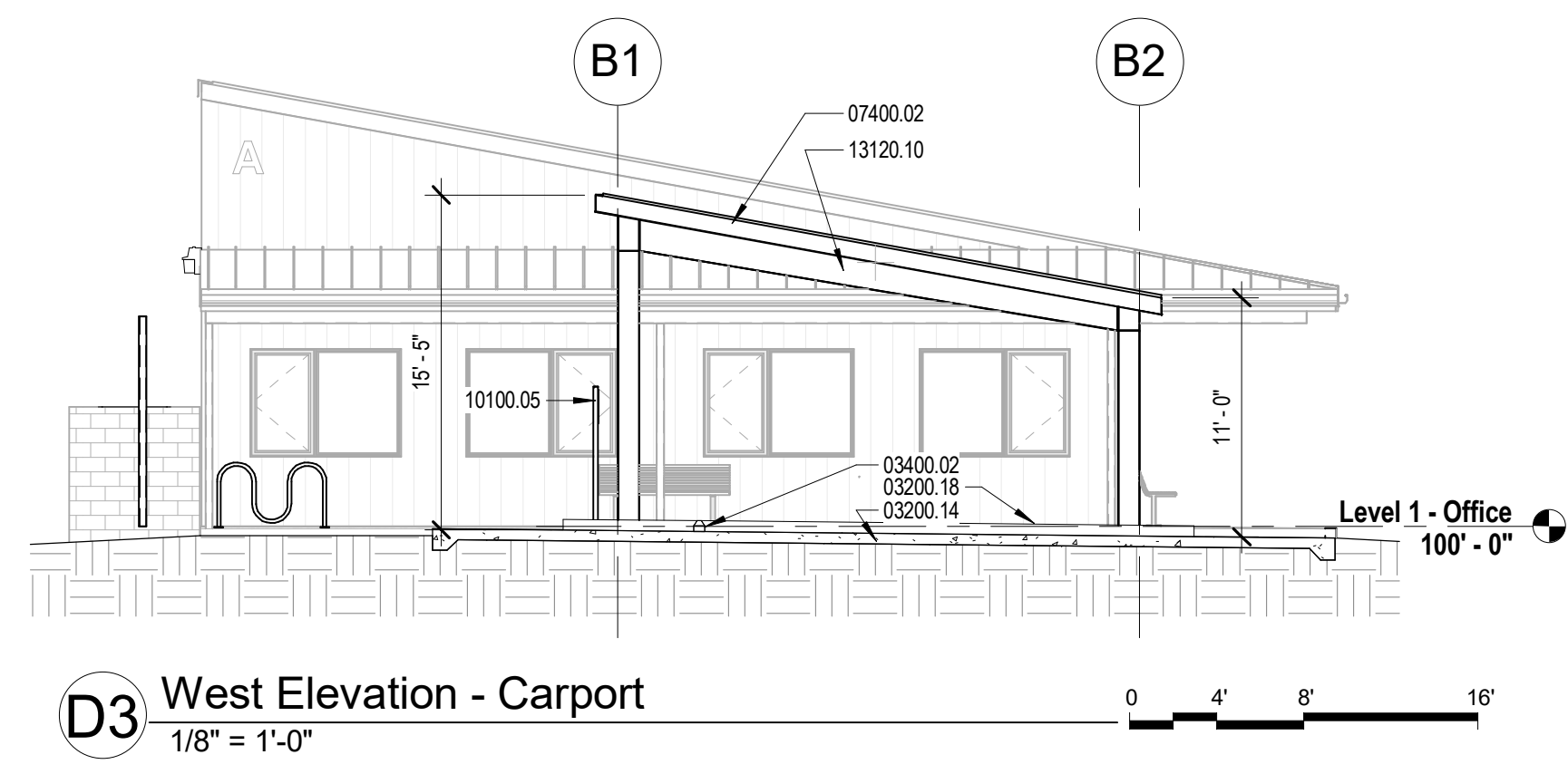
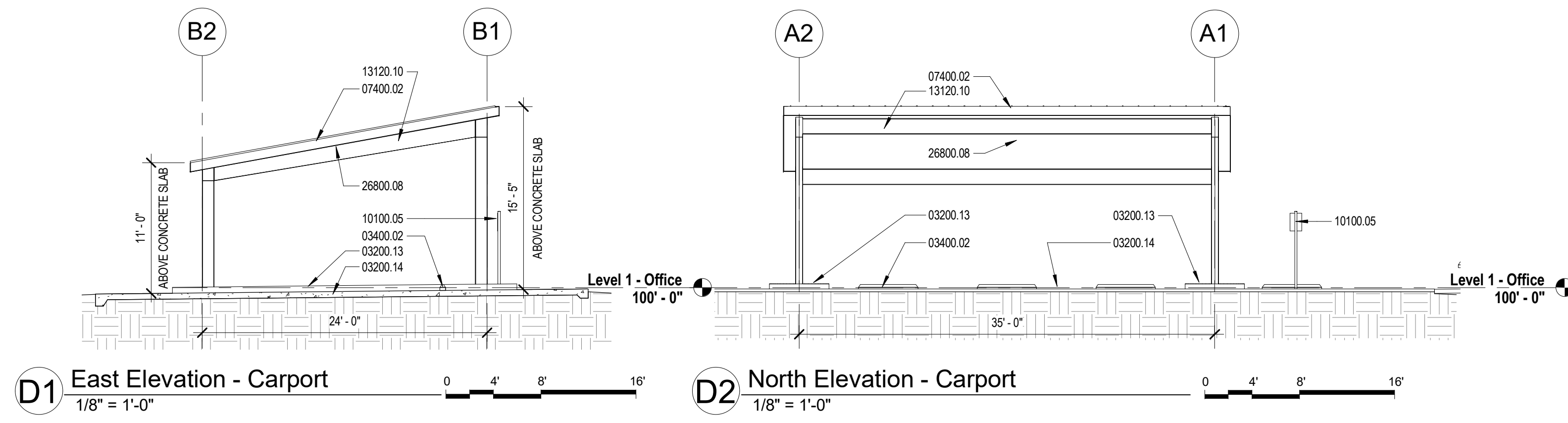


**GENERAL NOTE: EXTERIOR LIGHT FIXTURES**

LIGHT FIXTURES SHALL HAVE FULL CUT-OFF SHIELDS SO THAT NO FUGITIVE LIGHT ESCAPES BEYOND THE PROPERTY LINE. ALL LIGHT FIXTURES SHALL BE SHIELDED ACCORDINGLY.

**KEYED NOTES:**

- 03200.13 CONCRETE CURB PER COA STANDARD SPECIFICATIONS. REFER TO CITY STANDARD DETAIL DWG.2426.
- 03200.14 6" THICK 4,000 PSI CONCRETE SLAB WITH #4 REBAR EACH WAY AT 16" O.C., CENTERED IN SLAB. SLOPE AT 1/8" PER FOOT MINIMUM AWAY FROM BUILDING.
- 03200.18 3,000 PSI AIR-ENTRAINED CONCRETE ISLAND, 6" HIGH.
- 03400.02 6'-0" LONG PRE-CAST CONCRETE WHEEL STOP, TYPICAL.
- 05500.19 8" Ø STEEL PIPE BOLLARD FILLED WITH CONCRETE, TYPICAL. PRIME AND PAINT YELLOW.
- 07400.02 METAL ROOF PANELS: STANDING SEAM METAL ROOF, SILVER / GRAY COLOR.
- 07400.03 STANDARD VERTICAL METAL PANEL (PBR PROFILE OR SIMILAR), LIGHT GRAY COLOR.
- 07600.15 GALVANIZED METAL WALL ATTACHED DOWN LEADER PIPE.
- 08100.04 HOLLOW METAL DOOR AND FRAME: PRIME AND PAINT DARK GRAY.
- 08300.01 AUTOMATIC COILING OVERHEAD DOOR: DARK GRAY COLOR.
- 10100.03 BUILDING I.D. LETTER: 18" HIGH LETTER WITH MINIMUM 3" STROKE. I.D. LETTER SHALL HAVE A CONTRASTING COLOR (PURPLE) TO THE BUILDING MATERIAL. IT IS MOUNTED ON AND SHALL BE CLEARLY DISTINGUISHABLE FROM THE FIRE APPARATUS ACCESS ROAD.
- 10100.05 VAN ACCESSIBLE DISABLED PARKING SIGN. SEE DETAIL C4 / AS-101.
- 13120.08 PRE-ENGINEERED METAL BUILDING LEAN-TO STRUCTURE. PRIME AND PAINT COLOR: SILVER / GRAY.
- 13120.09 PRE-ENGINEERED SINGLE SLOPE METAL BUILDING. COLOR: SILVER / GRAY.
- 13120.10 PRE-ENGINEERED SINGLE SLOPE METAL BUILDING CARPORT STRUCTURE. PRIME AND PAINT COLOR: SILVER / GRAY.
- 23400.04 EVAPORATIVE COOLER.
- 26200.01 ELECTRIC SERVICE AND METER. SEE ELECTRICAL.
- 26800.02 WALL MOUNTED LIGHT FIXTURE: 20'-0" MAX. ABOVE FINISHED GRADE. SEE ELECTRICAL.
- 26800.08 LIGHT FIXTURE LOCATED BELOW STRUCTURE.



LEE GAMELSKY ARCHITECTS P.C.

2412 MILES ROAD SE  
ALBUQUERQUE, NM 87106  
505.842.8865 FAX 842.1693  
lee@gamem.com

STATE OF NEW MEXICO  
LEE D. GAMELSKY  
No. 1931  
REGISTERED ARCHITECT

**L&C TRANSPORT OFFICE AND SHOP**  
108 94th St. NW, Albuquerque, New Mexico 87121

PROJECT ARCHITECT: LEE GAMELSKY, AIA  
Date: 12 JUNE 2018

SITE DEVELOPMENT PLAN FOR BUILDING PERMIT  
DRB PROJECT NO.: 1011638

**EXTERIOR ELEVATIONS -  
PRE-ENGINEERED METAL BUILDING &  
CARPORT**

By: WTB  
SITE DEVELOPMENT PLAN

Sheet: Of:  
**A-201**

6/12/2018 6:02:41 PM