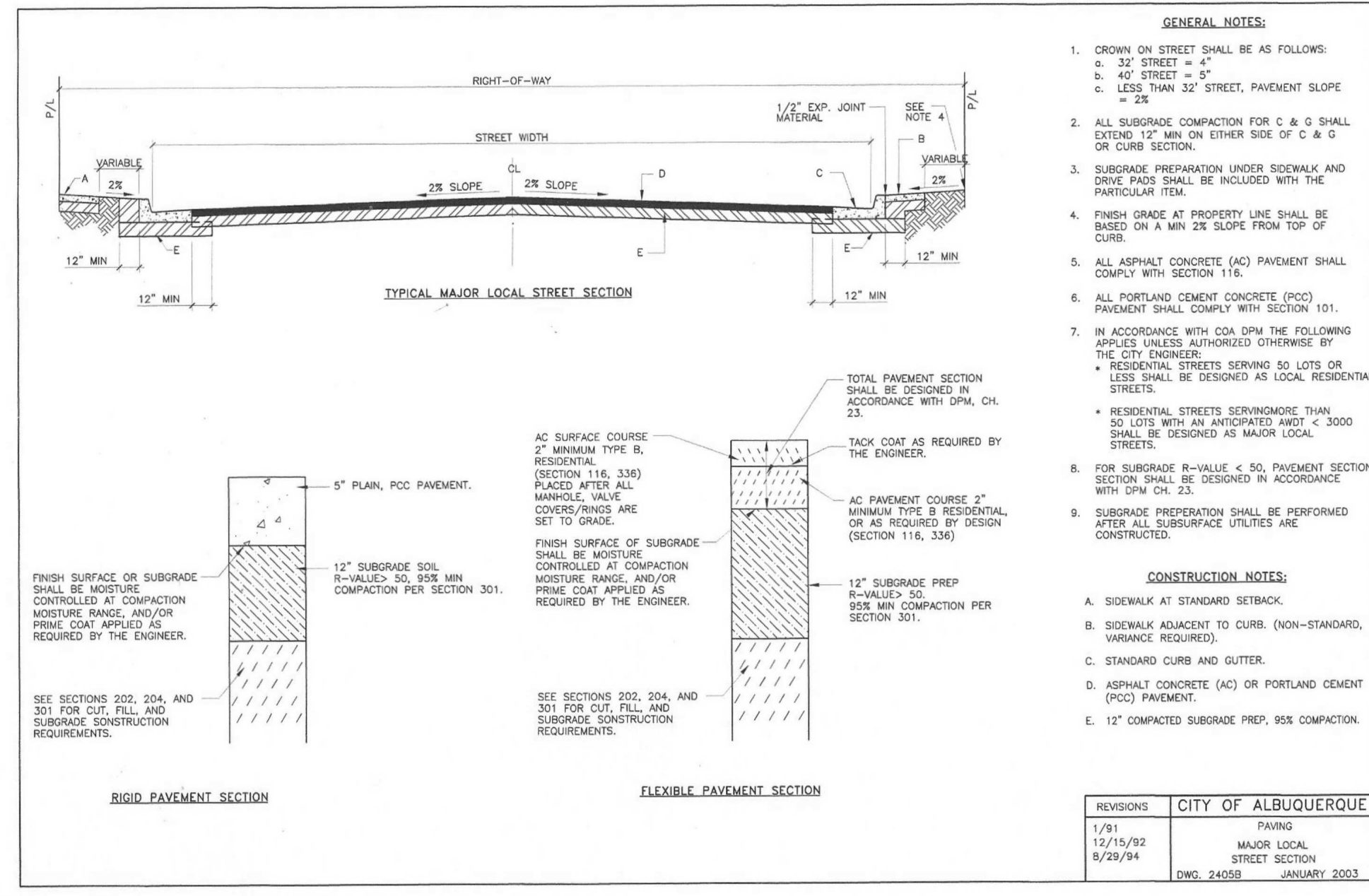
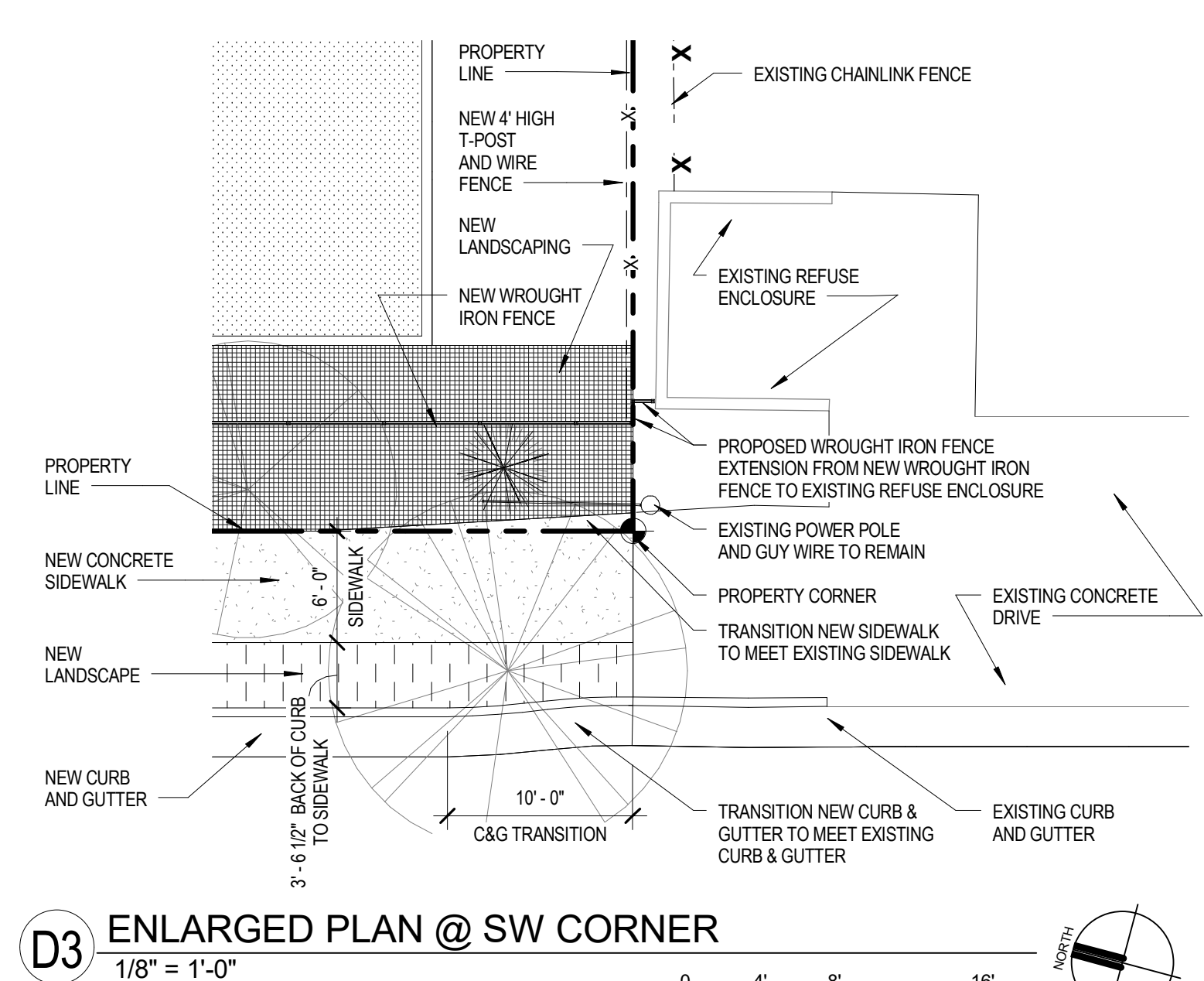


KEYED NOTES:

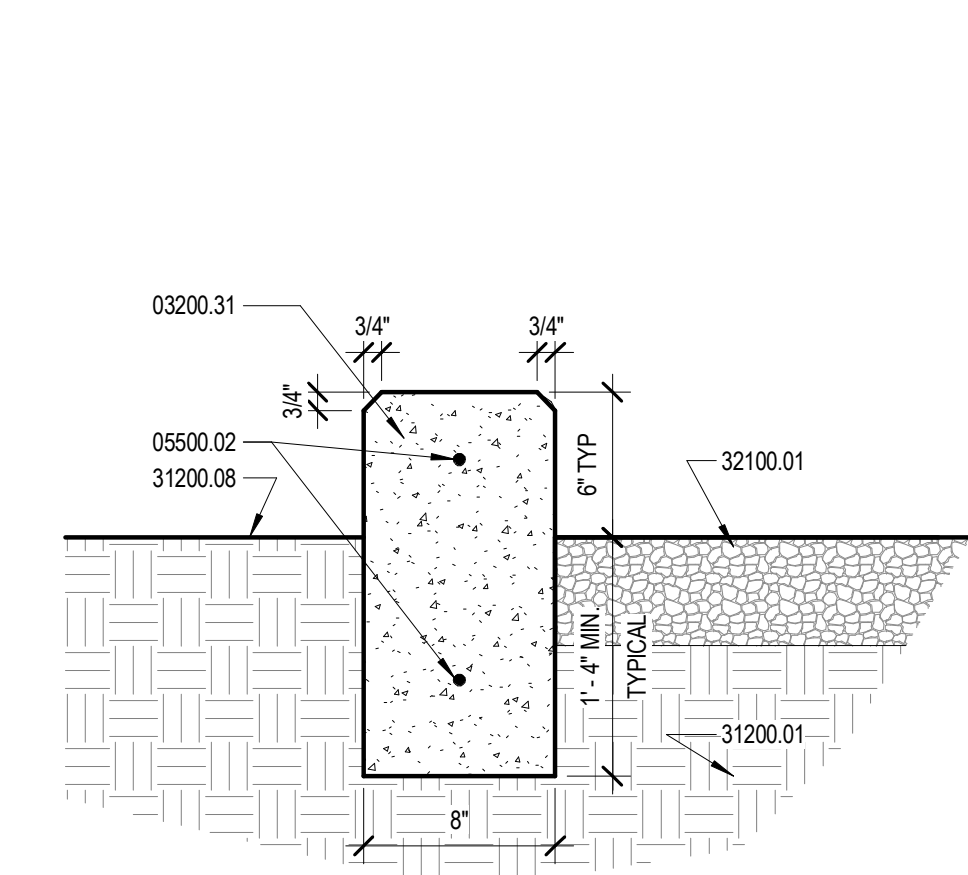
- 03200.31 6" WIDE X 6" HIGH MIN., 8" HIGH MAX. CONCRETE HEADER CURB. SEE DETAIL D4 / AS-101.
- 05500.02 #4 CONTINUOUS REBAR.
- 31200.01 GRADE COMPACTED TO 95%.
- 31200.08 FINISH GRADE.
- 32100.01 8" THICK AGGREGATE BASE COURSE (ABC) COMPACTED TO 95% MIN. DENSITY PER ASTM D-1557 OVER EXISTING GRADE COMPACTED TO 95% MIN. IN LIEU OF ABC, CRUSHED RECYCLED CONCRETE MAY BE USED.



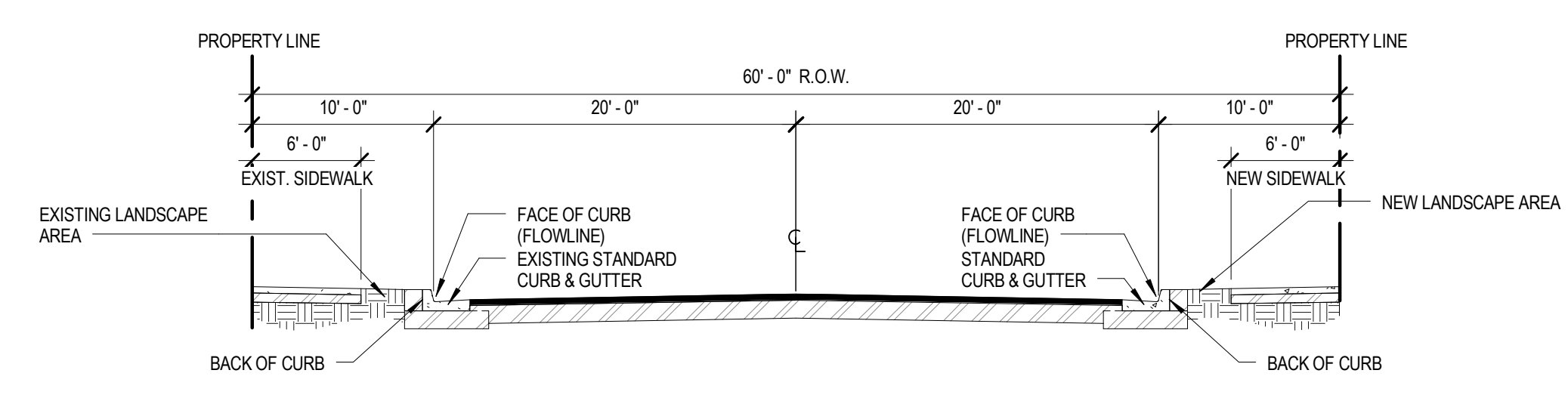
D1-D1.1 C.O.A. STANDARD DETAIL 2405B - MAJOR LOCAL STREET SECTION



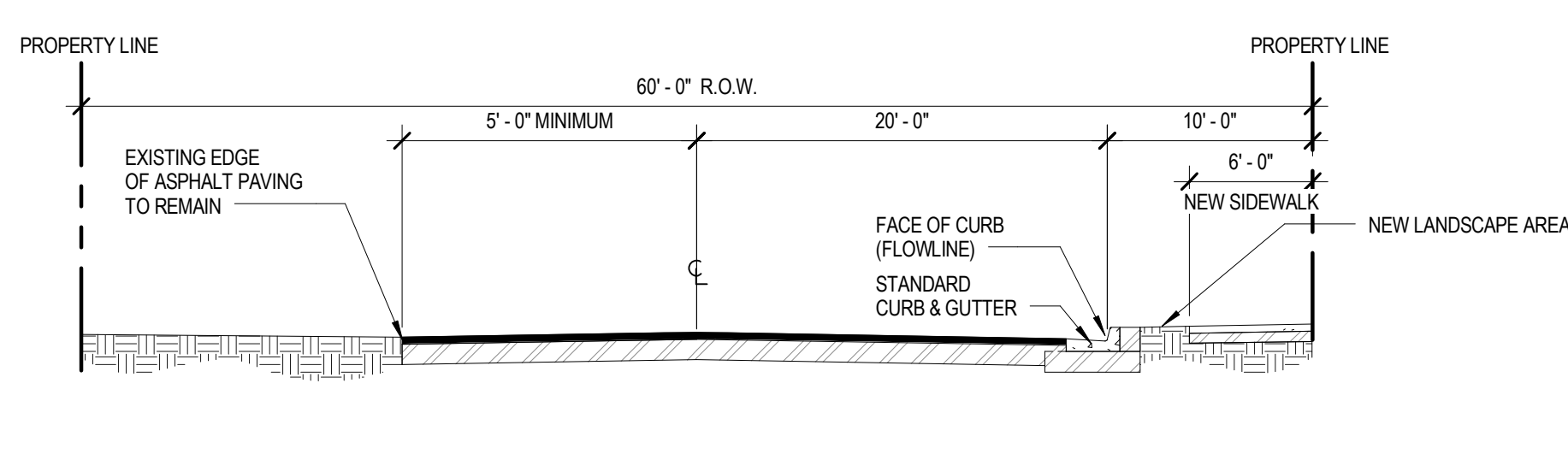
D3 ENLARGED PLAN @ SW CORNER
1/8" = 1'-0"



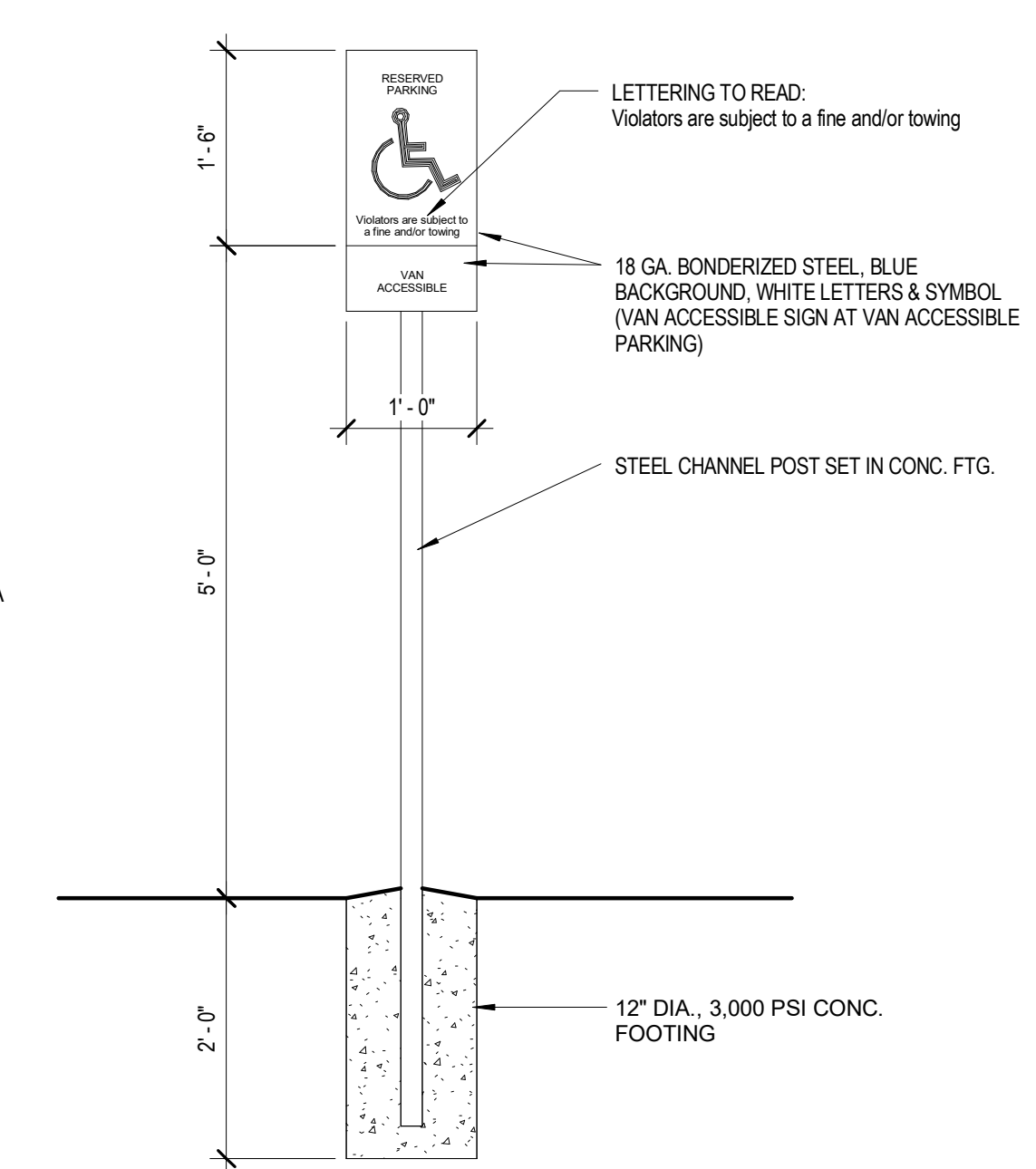
D4 TYPICAL HEADER CURB
1 1/2" = 1'-0"



D1 DETAIL - MAJOR LOCAL STREET SECTION @ VOLCANO
1/8" = 1'-0" SEE C.O.A. STANDARD DETAIL 2405B FOR STREET CONSTRUCTION STANDARDS (DETAIL D1 - D1.1 THIS SHEET)



D1.1 DETAIL - MAJOR LOCAL STREET SECTION @ 94TH STREET
1/8" = 1'-0" SEE C.O.A. STANDARD DETAIL 2405B FOR STREET CONSTRUCTION STANDARDS (DETAIL D1 - D1.1 THIS SHEET)



C4 HC Parking Sign Detail
3/4" = 1'-0"

SITESCAPES		P.O. Box 22326 Lincoln, NE 68542	PF: 402/421-9464 FX: 402/421-9479	WEBSITE: www.sitescapesonline.com E-MAIL: info@sitescapesonline.com
TITLE <i>ECHO BIKE RACK</i>	PRODUCT NO. <i>EC2-05-SM</i>	INCH TOLERANCES U.O.S.	FRACTION-- ± 1/16" ANG----- ± 1°	THE INFORMATION CONTAINED IN THIS DRAWING IS THE SOLE PROPERTY OF SITESCAPES, INC. ANY REPRODUCTION IN PART OR AS A WHOLE WITHOUT THE WRITTEN PERMISSION OF SITESCAPES, INC. IS PROHIBITED.

*Available in powder coat and DuraCoat finishes

A1 BIKE RACK DETAILS - BASIS OF DESIGN IS SITESCAPES (OR EQUAL)
NTS

SITESCAPES		P.O. Box 22326 Lincoln, NE 68542	PF: 402/421-9464 FX: 402/421-9479	WEBSITE: www.sitescapesonline.com E-MAIL: info@sitescapesonline.com
TITLE <i>ECHO BIKE RACK</i>	PRODUCT NO. <i>EC2-05-SM</i>	INCH TOLERANCES U.O.S.	FRACTION-- ± 1/16" ANG----- ± 1°	THE INFORMATION CONTAINED IN THIS DRAWING IS THE SOLE PROPERTY OF SITESCAPES, INC. ANY REPRODUCTION IN PART OR AS A WHOLE WITHOUT THE WRITTEN PERMISSION OF SITESCAPES, INC. IS PROHIBITED.

*Available in powder coat and DuraCoat finishes

MATERIALS LIST

- (1) Tubing - □ 2 3/8" x .154" Wall Steel Tubing
- (2) Surface Plate - □ 7 1/2" x 1/4" Thick Steel Plate with Three □ 9/16" Mounting Holes
- (3) Mounted with Six □ 1/2" x 4-5" Stainless Steel Anchor Bolts (Customer Supplied)

LEE GAMESKY ARCHITECTS P.C.		
2412 MILES ROAD SE ALBUQUERQUE, NM 87106 505.842.8865 FAX 842.1693 lee@gamsm.com		
L&C TRANSPORT OFFICE AND SHOP		
108 94th St. NW, Albuquerque, New Mexico 87121		
PROJECT ARCHITECT: LEE GAMESKY, AIA	Project #: Date: 12 JUNE 2018	
SITE DEVELOPMENT PLAN FOR BUILDING PERMIT DRB PROJECT NO.: 1011638		
SITE DETAILS		
By: WTB	Sheet: Of:	
SITE DEVELOPMENT PLAN		AS-101

7/3/2018 9:30:32 AM