

Figure 12

INFRASTRUCTURE LIST
for
One Presidential Plaza, Albuquerque, New Mexico

EXHIBIT "A"
TO SUBDIVISION IMPROVEMENTS AGREEMENT
DEVELOPMENT REVIEW BOARD (D.R.B.) REQUIRED INFRASTRUCTURE LIST
FINAL PLAT SIGN-OFF

Following is a summary of Public/Private Infrastructure required to be constructed or financially guaranteed to be constructed for the above development. This summary is not necessarily a complete listing. During the design process, if the City determines that appurtenant items have not been included in the summary, those items will be included in the listing and related financial guarantee, if the items normally are Subdivider responsibility. In addition, any unforeseen items which arise during construction which are necessary to complete the project and which normally are the Subdivider's responsibility are the responsibility of the Subdivider and will be included in the financial guarantee provided to the City.

Size/Qty	Type Improvement	Location	From	To
<u>Utilities</u>				
10"	Waterline w/ necessary FH's, valves and service lines	New Public Road	Jefferson	Osuna
8"	Sanitary Sewer line w/ necessary MH's and service lines	New Public Road	Jefferson	Southernmost Corner, Lot B
<u>Paving</u>				
40' F-F	Public Roadway, w/art. Pvmt, Std C&G, on both sides	New Public Road	Jefferson	Osuna
30' F-F	Private Roadway, w/ Std C&G on both sides	Easement btwn Tracts A & B	Jefferson	New Public Road
30' F-F	Private Roadway, w/ Std C&G on both sides	Easement btwn Tract D and Tracts A/B	Osuna	New Private Rd

See Exhibit "A" for identification of driveways.

Drive #5-12' wide, approx. 150' long NB-EB deceleration lane on Jefferson

Drive #5-12' wide, 100' long SB-EB Lt turn lane on Jefferson

Size Type Improvement Location From

Drive #4-12' wide, 150' long NB-EB deceleration lane on Jefferson

Drive #4-12' wide, approx. 50-65' (max allowable length within existing median geometry) long SB-EB Lt turn lane on Jefferson

Drive #3-12' wide, 150' long EB-SB taper on Osuna

Drive #2-12' wide, 150' long EB-SB decel lane on Osuna

Drive #1-12' wide, 150' long EB-SB taper on Osuna

Drive #3-12' wide, 200' long WB-SBLt turn lane on Osuna

Drive #1-12' wide, 100' long WB-SB Lt. turn lane on Osuna (striping only)

One additional lane each direction on Osuna Road from Jefferson to I-25 West Frontage Road to create three lanes in each direction in accordance with TIS. This satisfies the off site mitigation requirement.

The developer is responsible for bases, conduits, and ~~mastarms~~ **pullboxes** as needed for signalization changes at the intersection of Jefferson & Osuna **and at the intersection of Osuna and I-25 West Frontage Road.** The City is responsible for **removing and relocating existing mastarms, installing new mastarms and other** ~~installing~~ the signals **equipment.** **Existing controllers and cabinets will be re-used on this project.**

Grading and Drainage certification must completed prior to release of financial guarantees. Only grading necessary to construct the public and private roads will be performed with this project.

Prepared by: *Bruce Stidworthy*
Print Name: Bruce Stidworthy
Firm: Bohannon Huston

Development Review Board Member Approval

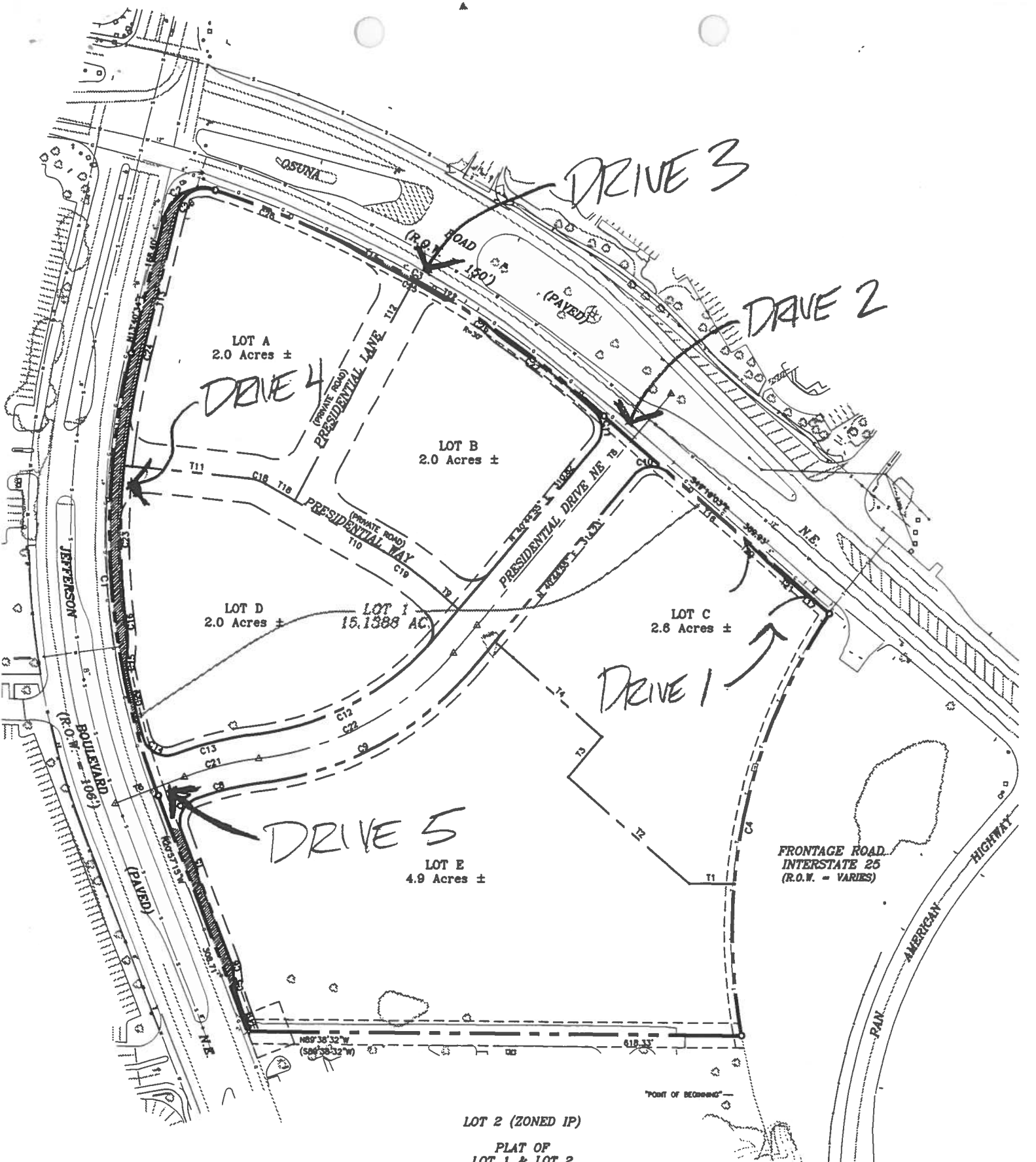
[Signature] 2-24-98
Transportation Development Date

Roger A Green 2/24/98
Utilities Development Date

Edward A. Stang 2/24/98
Parks & Gen. Serv. Date

[Signature] 2-24-98
City Engineer/AMAFCA Date

Kenn L. Doni 2/24/98
DRB Chair Date



LOT 2 (ZONED IP)
 PLAT OF
 LOT 1 & LOT 2
 BLOCK D, UNIT II
 INTERSTATE INDUSTRIAL TRACT
 MARCH 16, 1994
 (241-201)

EXHIBIT 'A'