

ADMINISTRATIVE AMENDMENT

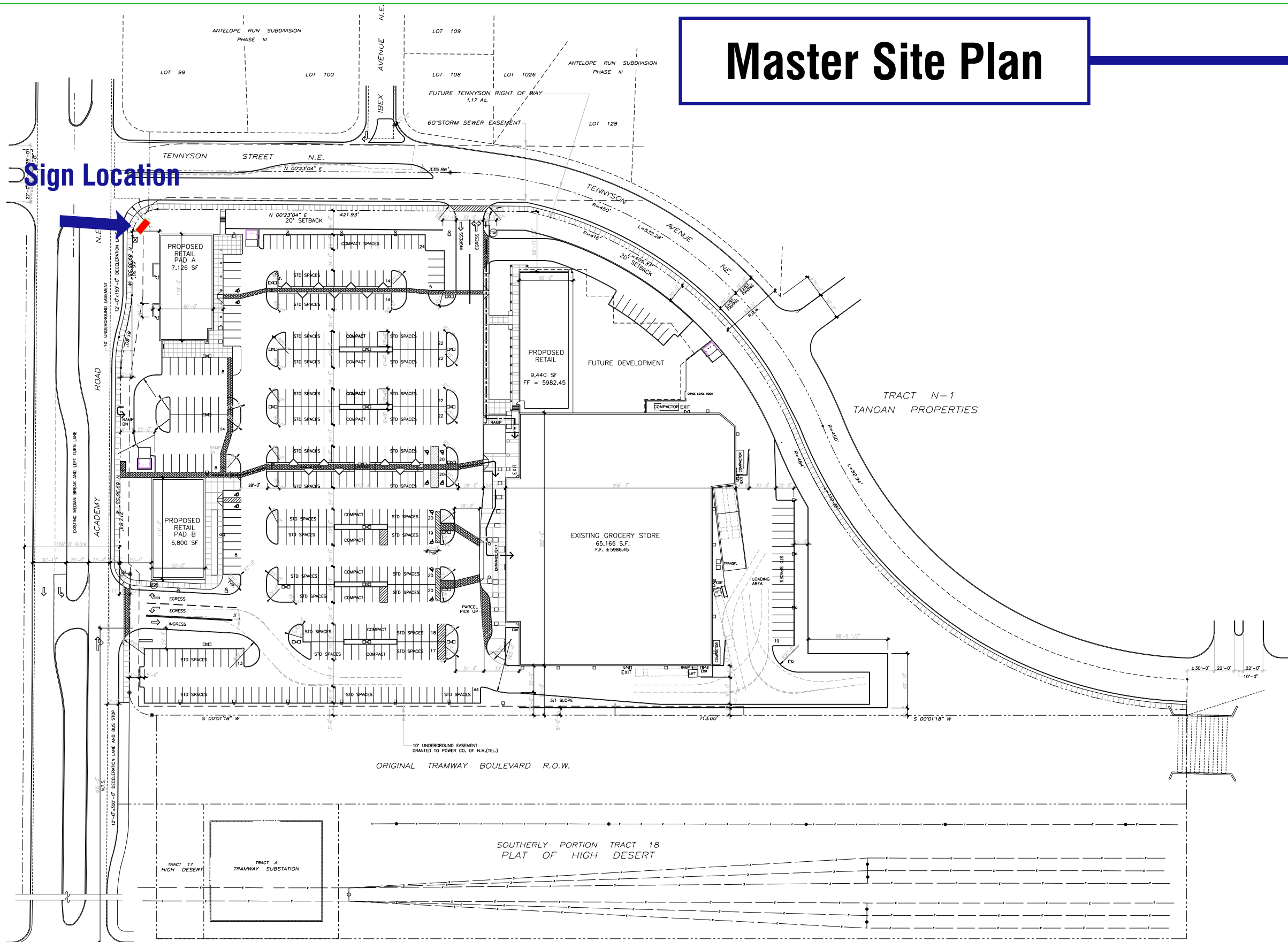
FILE # _____ PROJECT # _____

APPROVED BY

DATE

Master Site Plan

Sign Location

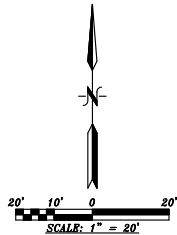


Land Title Survey

A.L.T.A / A.C.S.M. LAND TITLE SURVEY
OF
TRACTS M-1-A-3, M-1-A-4 AND M-1-A-2-B
TANOAN PROPERTIES
WITHIN THE ELENA GALLEGOS GRANT
PROJECTED SECTION 27, T.11 N., R.4 E., N.M.P.M.
ALBUQUERQUE, BERNALILLO COUNTY, NEW MEXICO
JUNE, 2016

LEGEND

- EM ELECTRIC METER
- GM GAS METER
- WM WATER VALVE
- WM WATER METER
- MH MANHOLE (TYPE AS NOTED)
- CO SEWER CLEANOUT
- IRR IRRIGATION CONTROL VALVE/BOX
- FR FIRE HYDRANT
- LP LIGHT POLE
- TEL TELEPHONE PULL BOX
- CTV CABLE TELEVISION RISER
- JB ELECTRICAL JUNCTION BOX
- IRR IRRIGATION CONTROL VALVE/BOX
- TRM TRANSFORMER PAD
- MASONRY WALL



PERPETUAL ACCESS EASEMENT, EXCEPT AS SHOWN, DEFINED BY THE CONSTRUCTED LANDSCAPE ISLANDS. (8/29/2006; A123, 1182)

TRACT M-1-A-1
TANOAN PROPERTIES
filed October 11, 2002, Bk. 2002C, p.335
-PARCEL 2-
(SEE SURVEYOR'S NOTES)

(SEE SURVEYOR'S NOTES)
PARCEL 2 SUBJECT TO A NONEXCLUSIVE EASEMENT FOR VEHICULAR AND PEDESTRIAN TRAFFIC. EASEMENT IS BLANKET AS DESCRIBED IN THE FIRST AMENDMENT TO DECLARATION OF RESTRICTIONS AND GRANT OF EASEMENT (8/29/2006; A123/1182)

8' 6" R/W

TENNYSON STREET NE
PUBLIC DEDICATED STREET
(2002C / 335)

Sign Location

8' 6" R/W

R = 30.00 (30.00)
L = 45.55 (47.12)
Δ = 86°59'11" (89°59'59")
Ch = N 43°08'06" W 41.30
(N 44°36'56" W 42.43)

R = 150.00 (150.00)
L = 42.60 (42.57)
Δ = 16°16'14" (16°15'37")
Ch = N 81°33'09" W 42.45
(N 81°29'07" W 42.43)

R = 150.00 (150.00)
L = 42.63 (42.57)
Δ = 16°17'00" (16°15'37")
Ch = N 81°22'34" W 42.49
(N 81°29'07" W 42.43)

ACADEMY ROAD NE
PUBLIC DEDICATED STREET
(2002C / 335)

10' 6" R/W

LINE TABLE

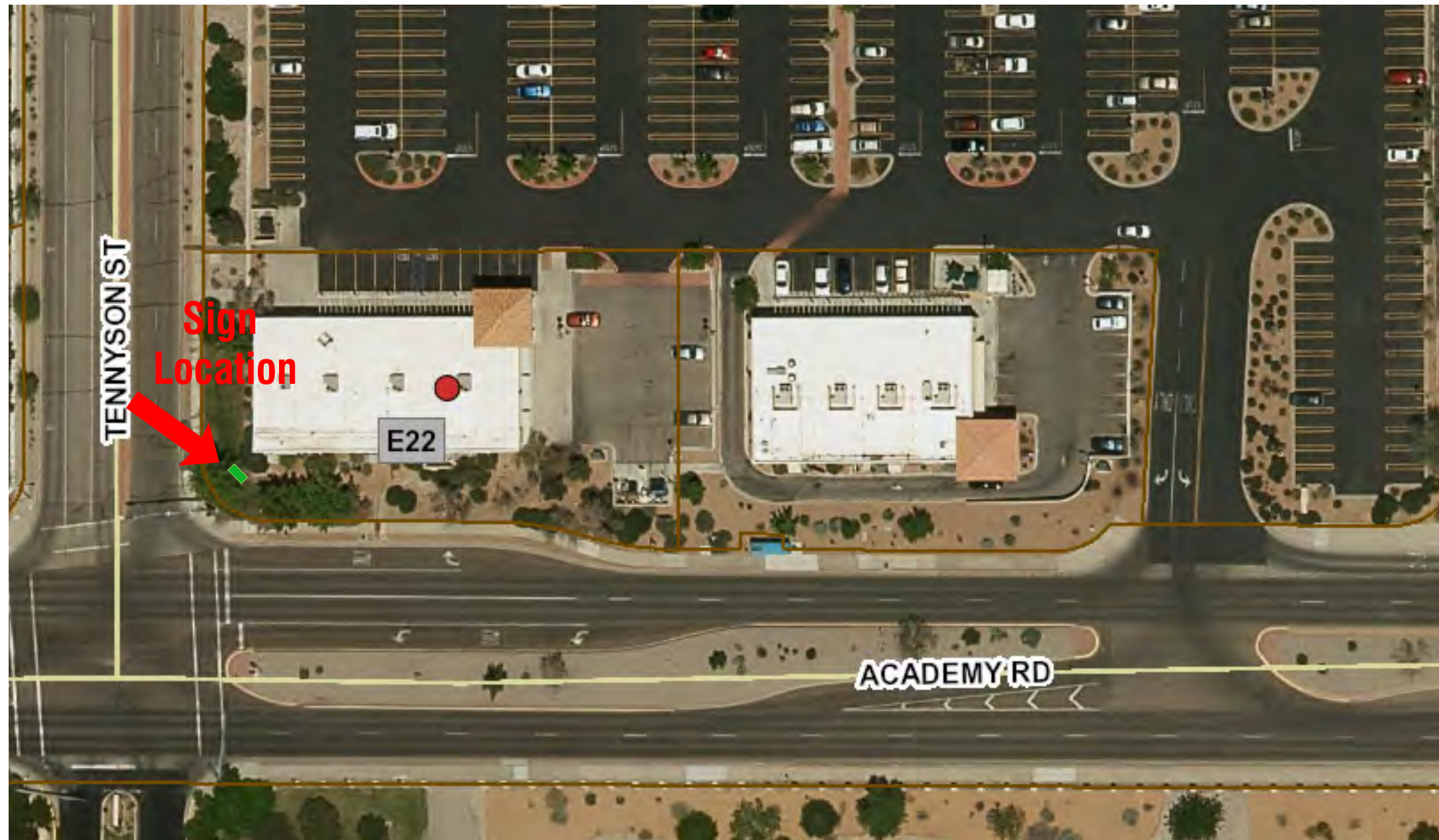
T1	N 89°38'23" W 14.54	(N 89°38'23" W 14.54)
T2	N 00°21'37" E 7.00	(N 00°21'37" E 7.00)
T3	N 89°38'23" W 20.00	(N 89°38'23" W 20.00)
T4	S 00°21'37" W 7.00	(S 00°21'37" W 7.00)
T5	N 89°38'23" W 27.64	(N 89°38'23" W 27.64)
T6	N 89°38'23" W 0.91	(N 89°38'23" W 0.91)

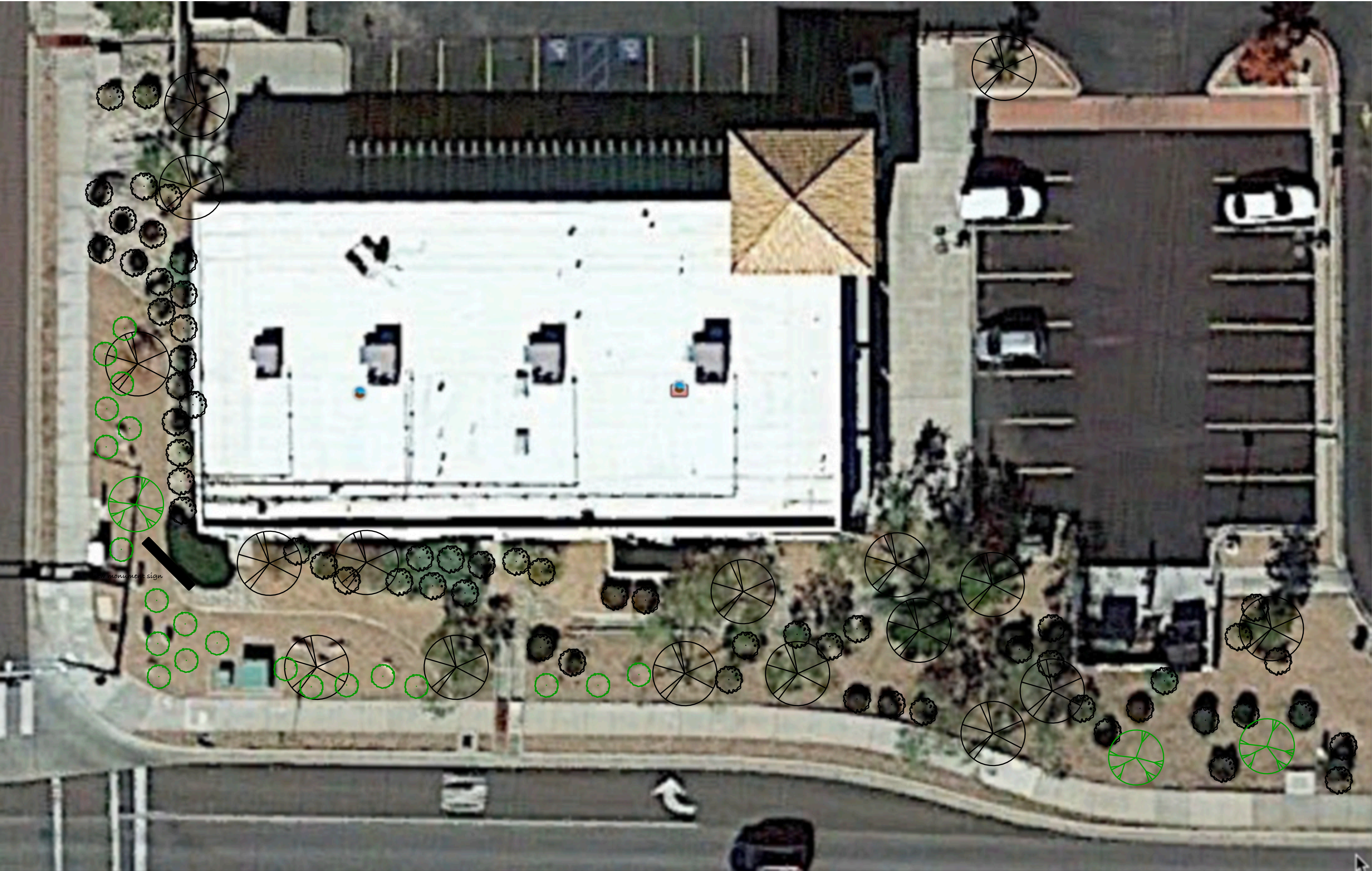
THE SURVEY OFFICE, LLC

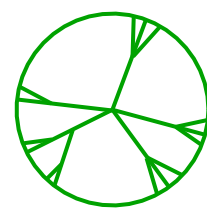

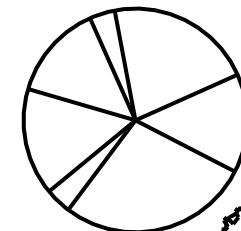

333 LOMAS BLVD., N.E. 87102
ALBUQUERQUE, NEW MEXICO 87102
PHONE: (505) 998-0303
FAX: (505) 998-0305

Site Plan

12241 Academy RD NE
Albuquerque NM 87111





symbol	name	size
	'bubba' desert willow	
	'autumn amber' sumac	
	existing trees	
	existing plants	

existing plants approximate coverage 2135 sq ft

existing trees approximate coverage 3600 sq ft

75% coverage 3083 sq ft

additional plants trees coverage needed 1348 sq ft

project
High Desert Village West
Academy Boulevard NE
Albuquerque, NM 87111

scale
1" = 10', 0"

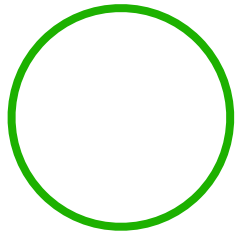

designer
Matt Moxley

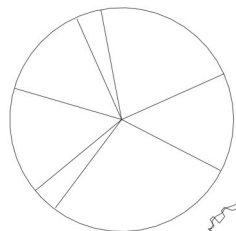

revisions
V. 1

date
10/15/2019

TRUE WEST
LANDSCAPE



symbol	name	size
	'bubba' desert willow 15-gallon	
	'autumn amber sumac 5-gallon	

	existing trees
	existing plants

existing plants approximate coverage 1575 sq ft

existing trees approximate coverage 600 sq ft

75% coverage 3757 sq ft

additional plants trees needed 1582 sq ft

project
High Desert Village North
Academy Boulevard NE
Albuquerque, NM 87111

scale
1" = 10', 0"

designer
Matt Moxley

revisions
V. 1

date
10/15/2019

TRUE WEST
LANDSCAPE

Sign Location



Monument Sign with Illuminated Sign Cabinet

Sign Type:

Quantity 1: Internally illuminated single sided cabinet mounted on stone veneer concrete base.

Sign Size: 12' W x 5' H

Sign sq/ft: 60 sq/ft

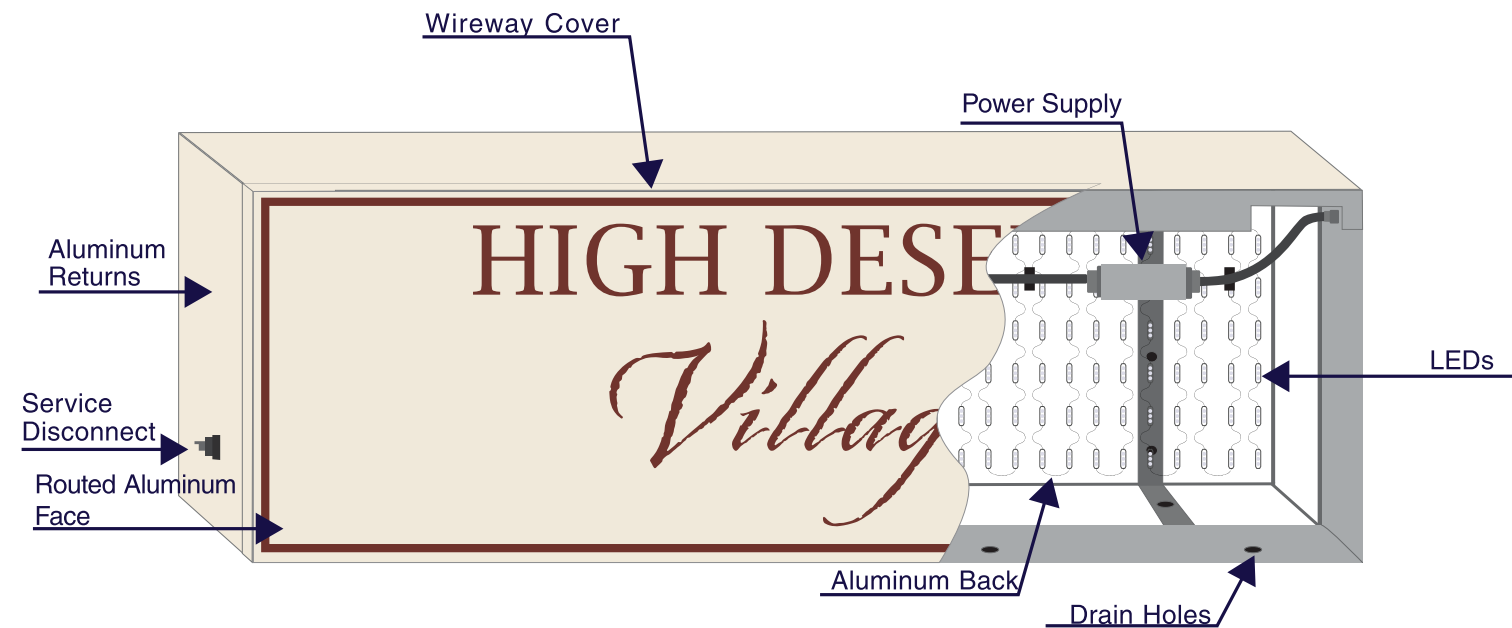


High Desert Village

Address: 12241 Academy RD NE

City/State: Albuquerque, NM 87111

Sign Details



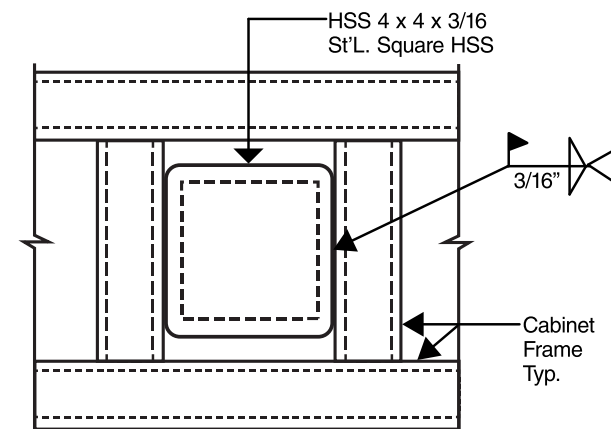
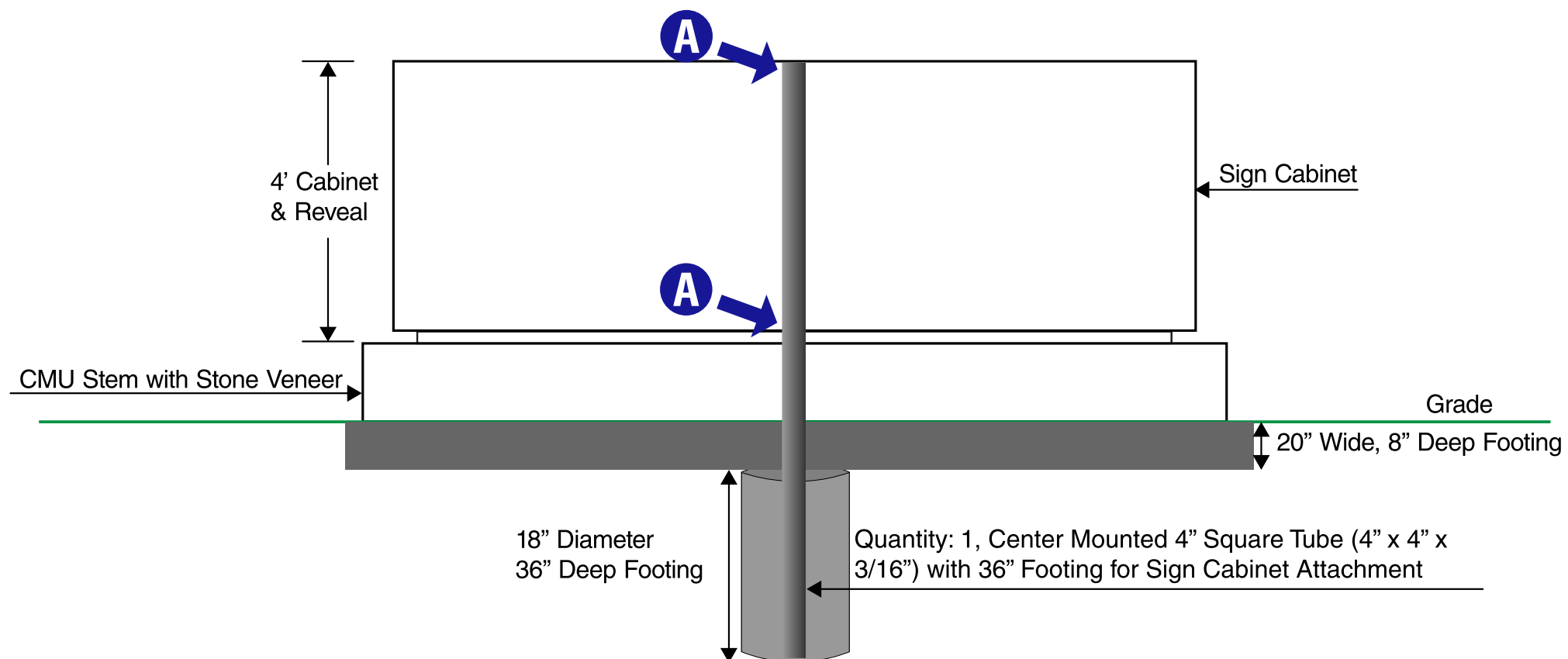
Sign Cabinet Details

Monument Sign with Illuminated Sign Cabinet

- A** Aluminum sign cabinet with .090" thick routed face with acrylic letters mounted to the backside of the face. Internally illuminated with LEDs. Cabinet will have cream stucco finish
- B** Painted aluminum reveal.
- C** Stone veneer applied over the concrete monument base. Stone type/style: Burnt Ochre Del Mare Ledgerstone.

Foundation/Footing Details

Front View



A Connection (2 places)

Side View

