

# PRES Now

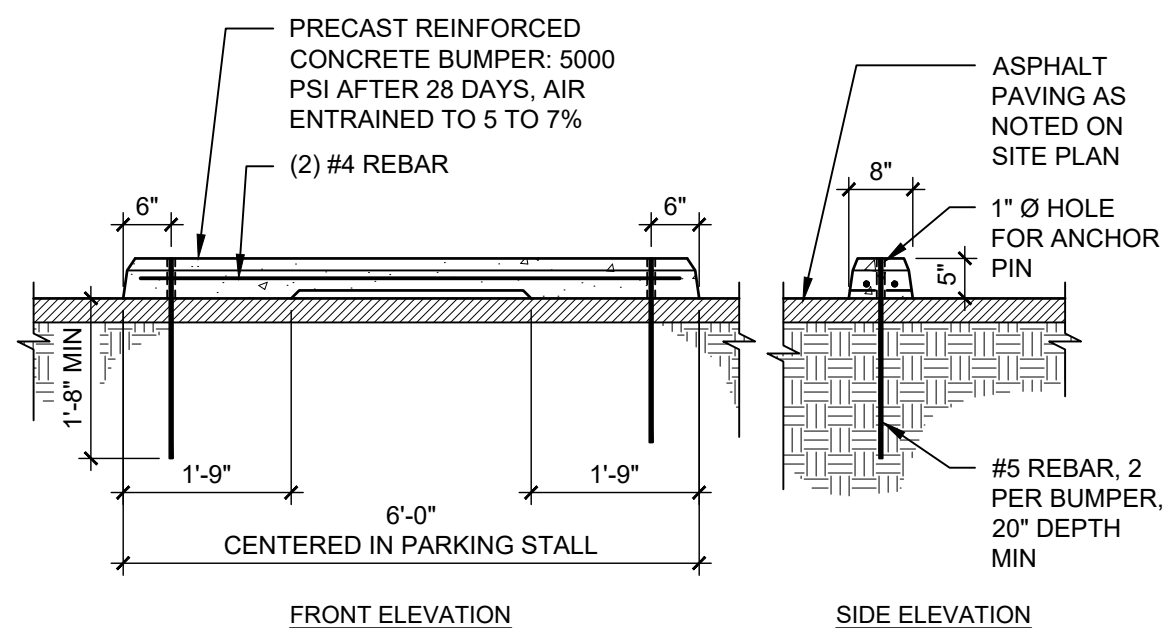
## 24/7 Urgent and Emergency Care

**A** DIMENSIONAL LETTERS  
SCALE: 1/2"=1'  
**ILLUM.** **F.24** CHANNEL LETTERS  
SCALE: 1/2"=1'  
QUANTITY: 2  
Sign ID: F1.1  
Sign ID: F1.2  
111 SQ. FT.

ILLUMINATION: Internal  
Style: Front Lit Illuminated  
Light Source: LED Modules  
Light Source Color: 6500K White  
Primary Power Source Input Required: 277V  
Circuit Required: 20 Amp Dedicated  
Timer or Dusk to Dawn (Photo Cell): TBD  
Power Supply LED Driver Input Voltage: 100-277V AC  
Power Supply LED Driver Listed: UL  
Service Disconnect Switch: Yes - On Sign  
Amp Draw: TBD

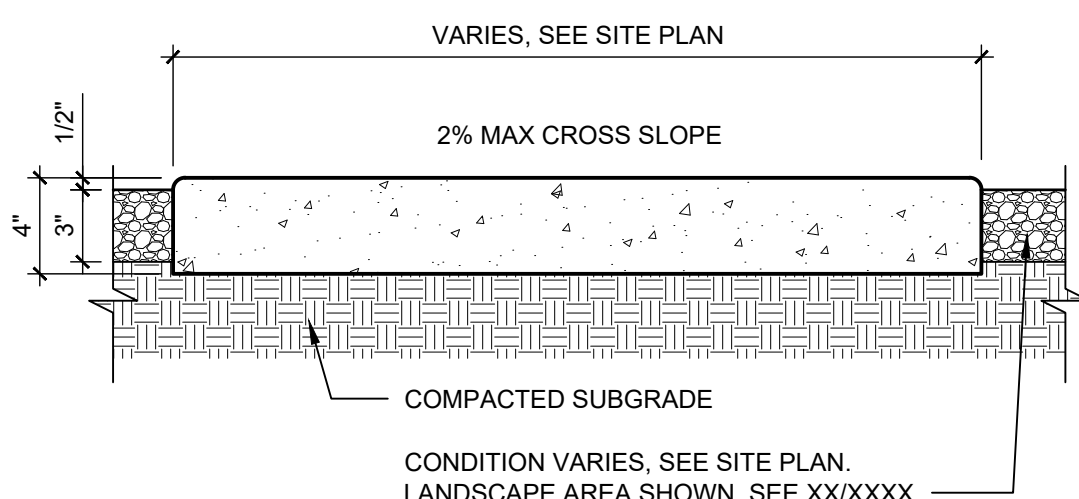
**D1** WALL SIGN  
1/2" = 1'-0"

NOTE:  
WHERE INSTALLED AT ACCESSIBLE PARKING  
SPACES, PAINT BUMPER ADA BLUE



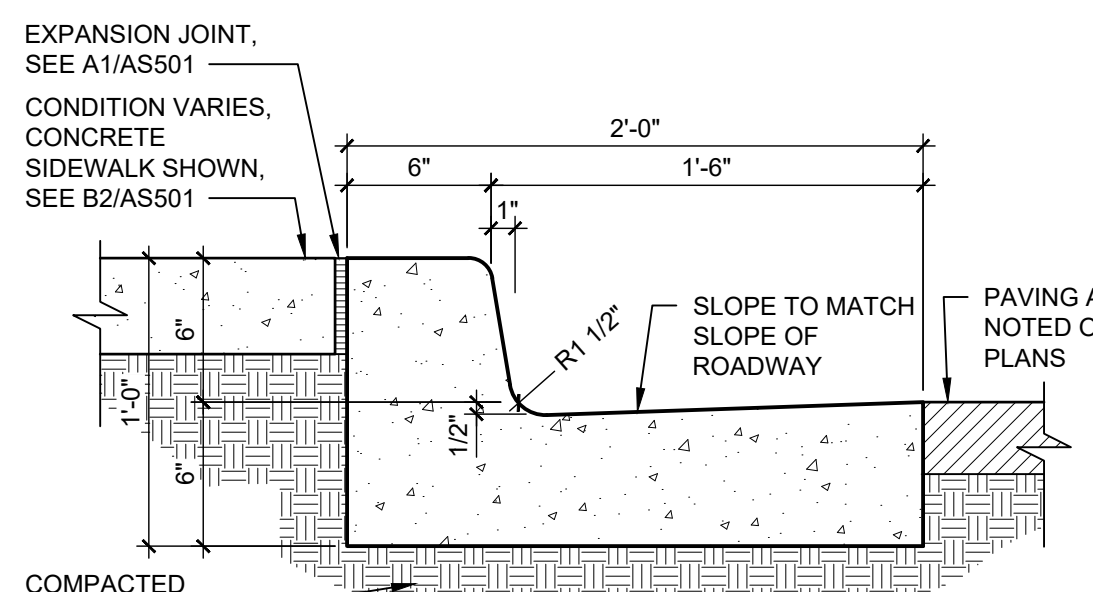
**C1** PARKING BUMPER  
1/2" = 1'-0"

- NOTES:
- SEE SITE PLANS AND A1/AS501 FOR JOINING.
  - CAST-IN-PLACE CONCRETE PAVING, LIGHT BROOM FINISH PERPENDICULAR TO TRAFFIC FLOW WITH 1/2" RADIUS ON EXPOSED EDGES
  - INTEGRAL COLOR WHERE NOTED ON PLANS.
  - FINISH GRADE FOR LANDSCAPE AREAS SHALL BE 1/2" BELOW TOP OF PAVING.

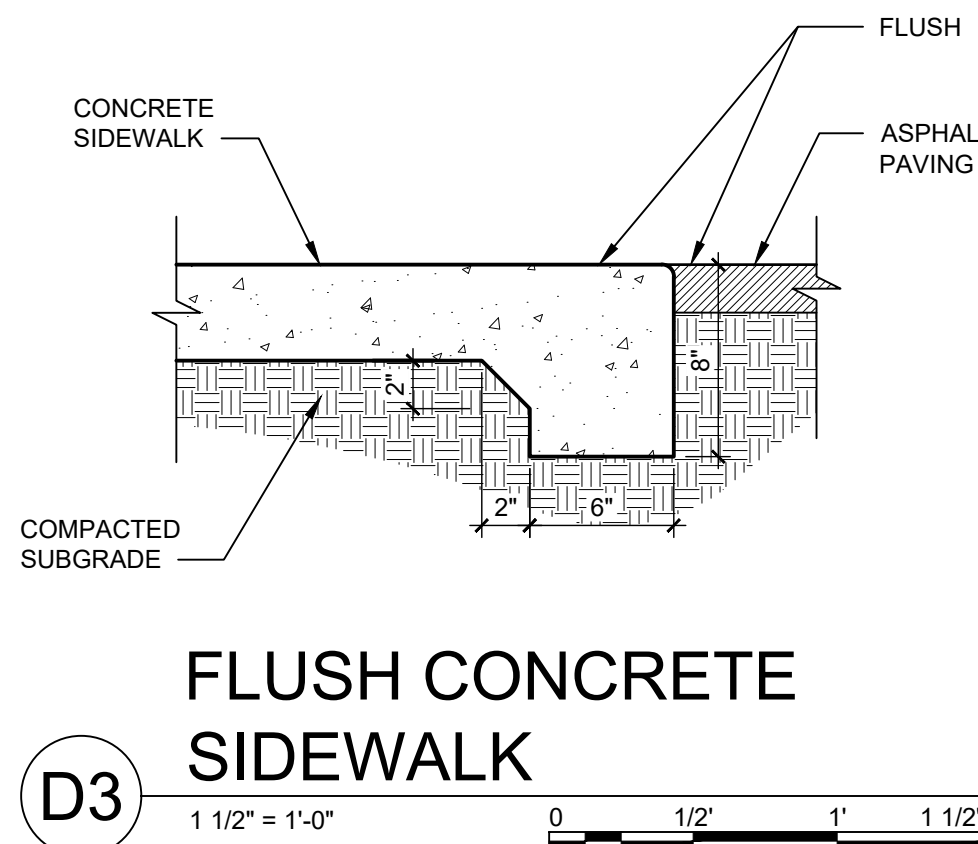


**B2** CONCRETE SIDEWALK  
1 1/2" = 1'-0"

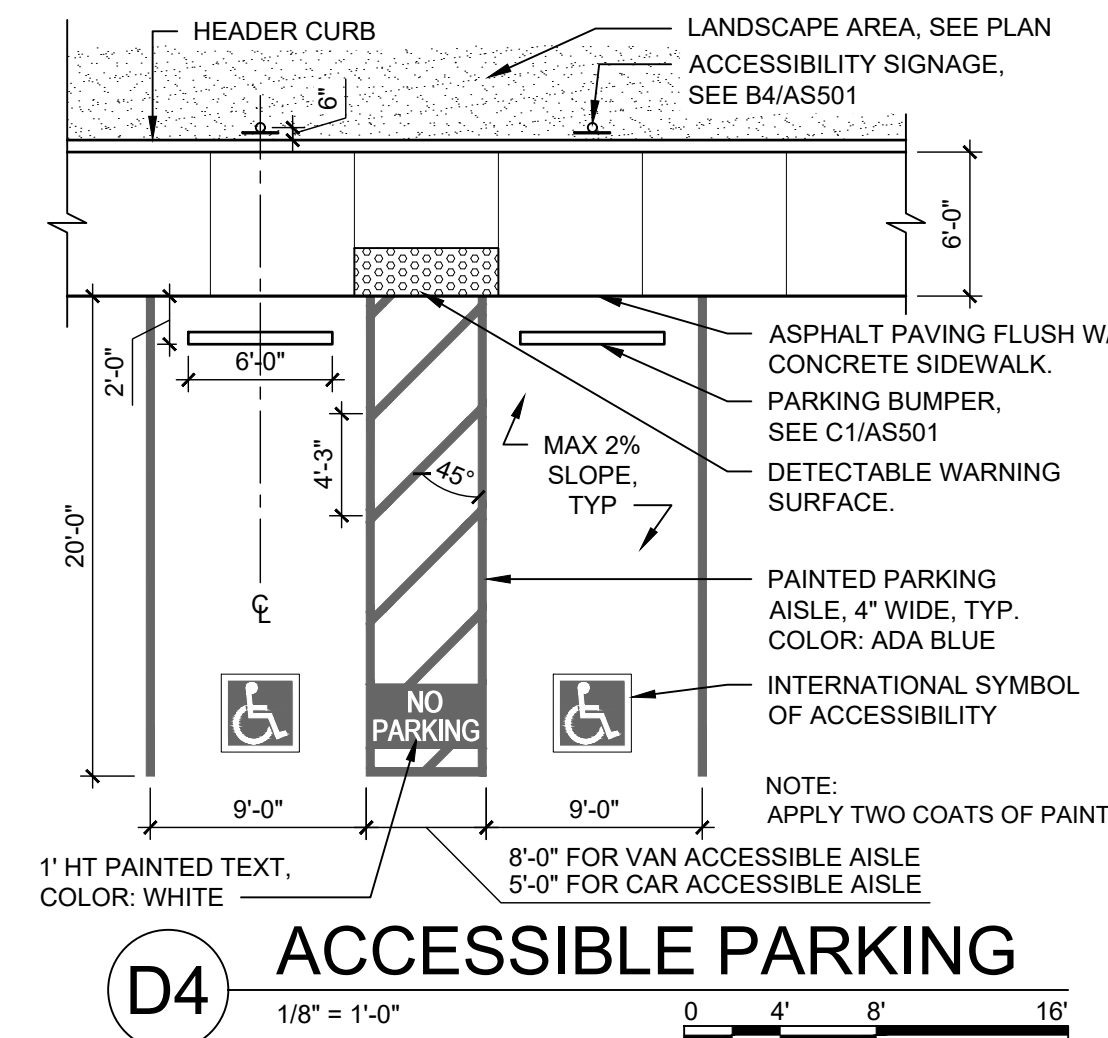
- NOTES:
- WHERE BACK OF CURB AND GUTTER IS EXPOSED ALONG A RAMP, ADD 1/2" RADIUS ON EXPOSED EDGES.
  - CAST-IN-PLACE CONCRETE, LIGHT BROOM FINISH, WITH 1/2" RADIUS ON EXPOSED EDGES.



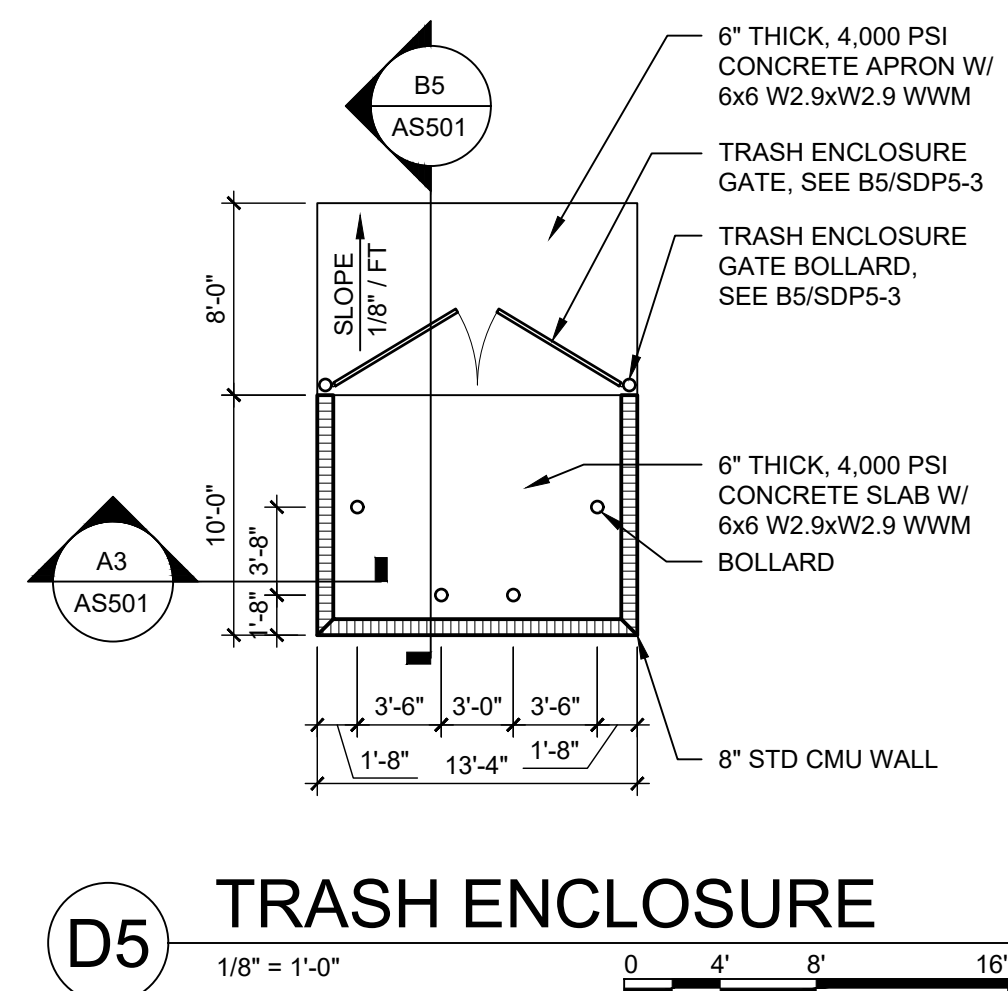
**A2** CONCRETE CURB & GUTTER  
1 1/2" = 1'-0"



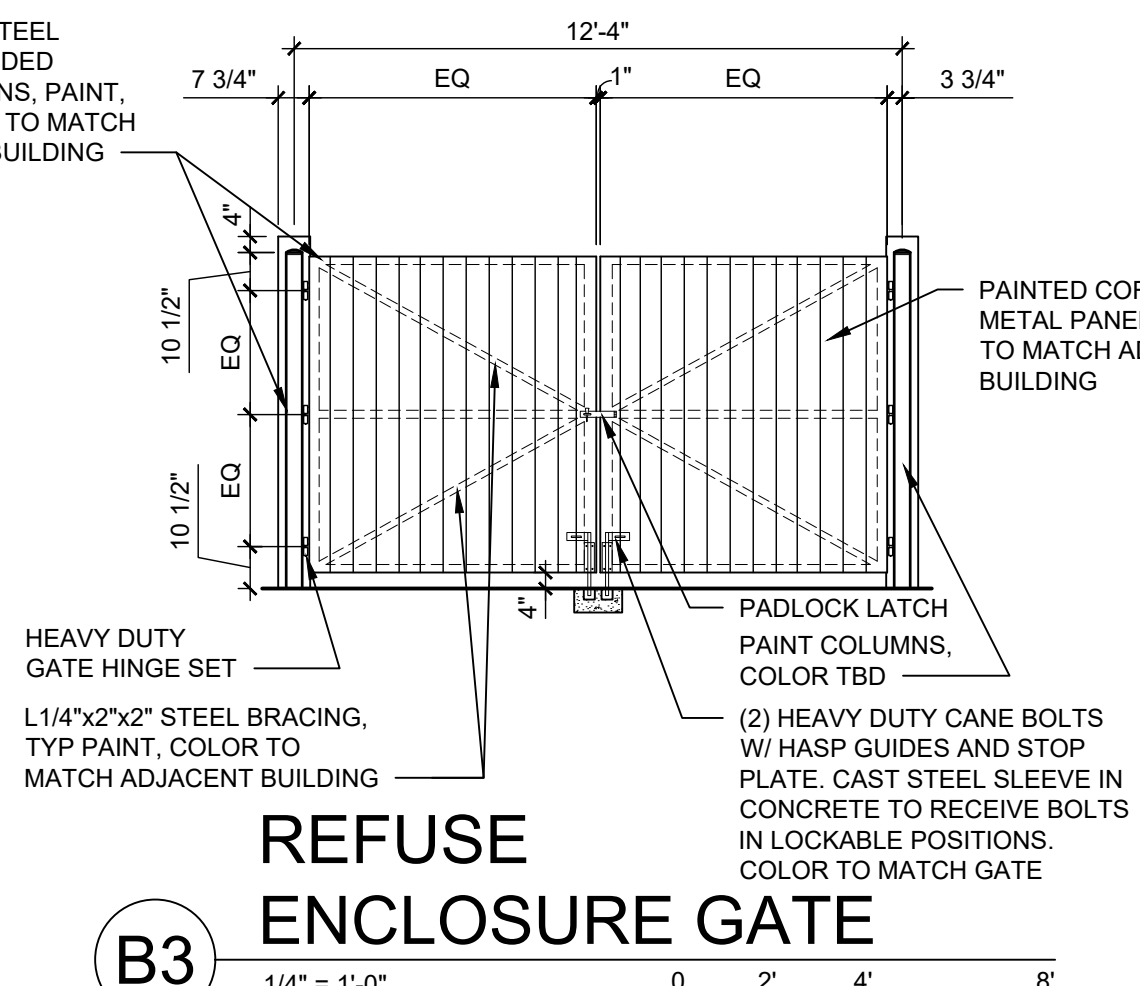
**D3** FLUSH CONCRETE SIDEWALK  
1 1/2" = 1'-0"



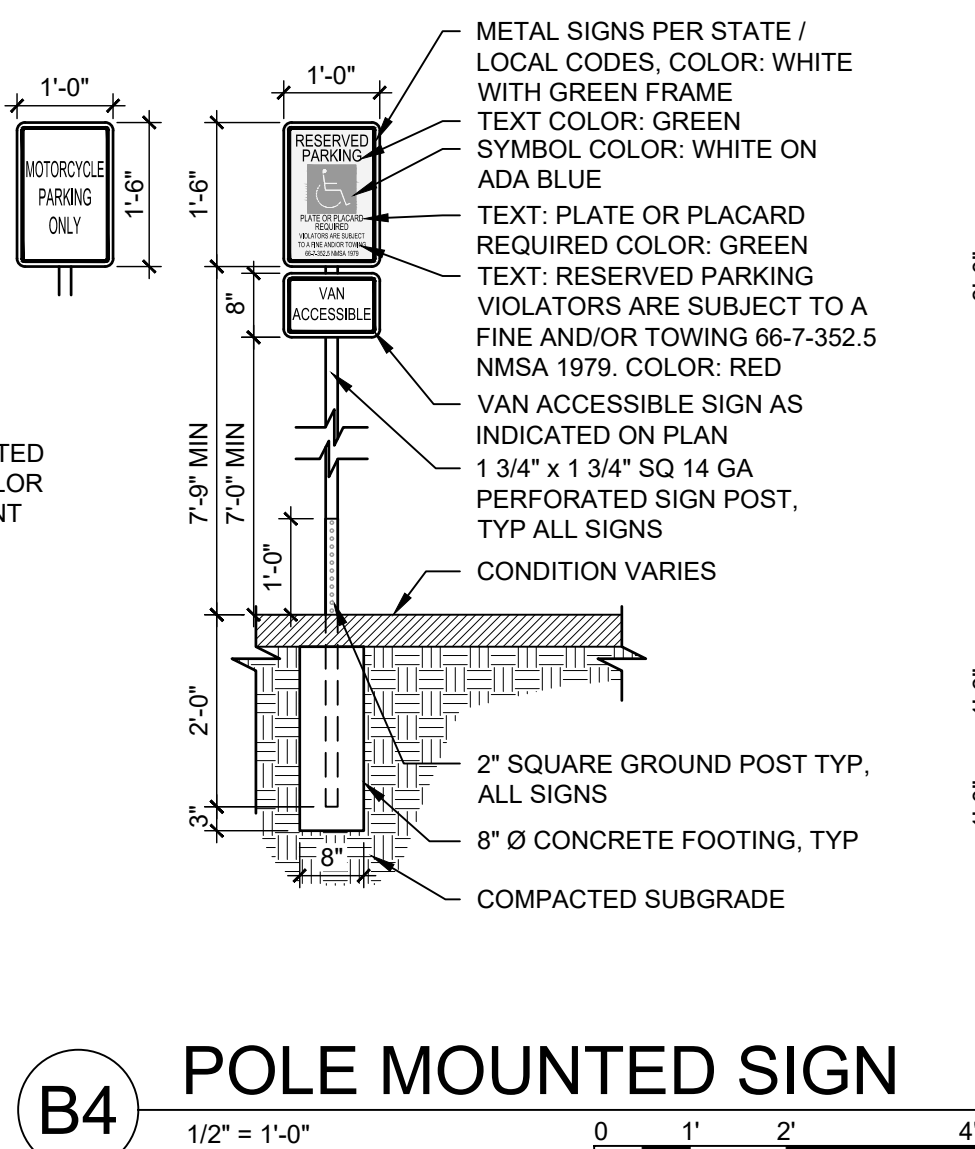
**D4** ACCESSIBLE PARKING  
1/8" = 1'-0"



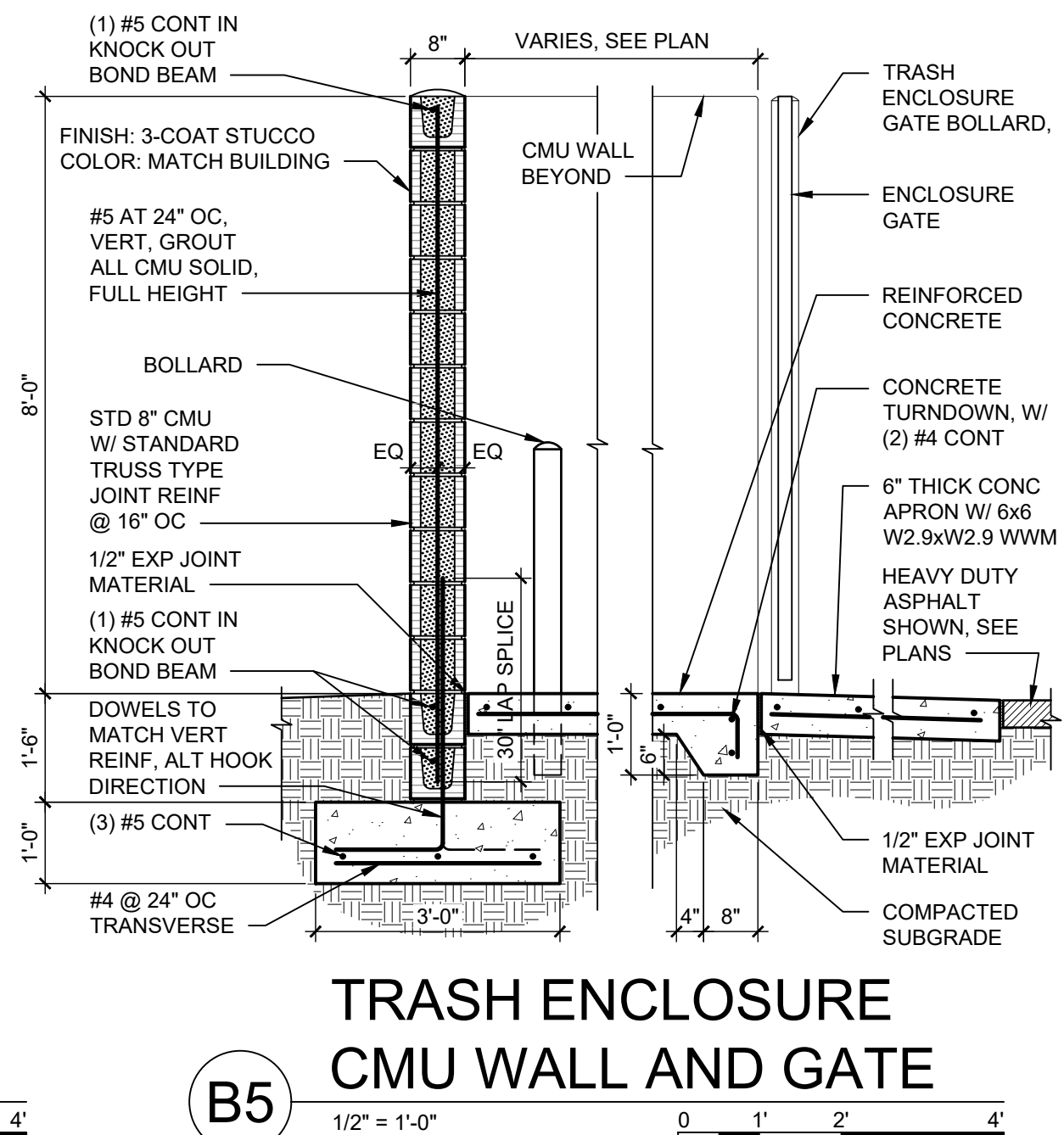
**D5** TRASH ENCLOSURE  
1/8" = 1'-0"



**B3** REFUSE ENCLOSURE GATE  
1/4" = 1'-0"



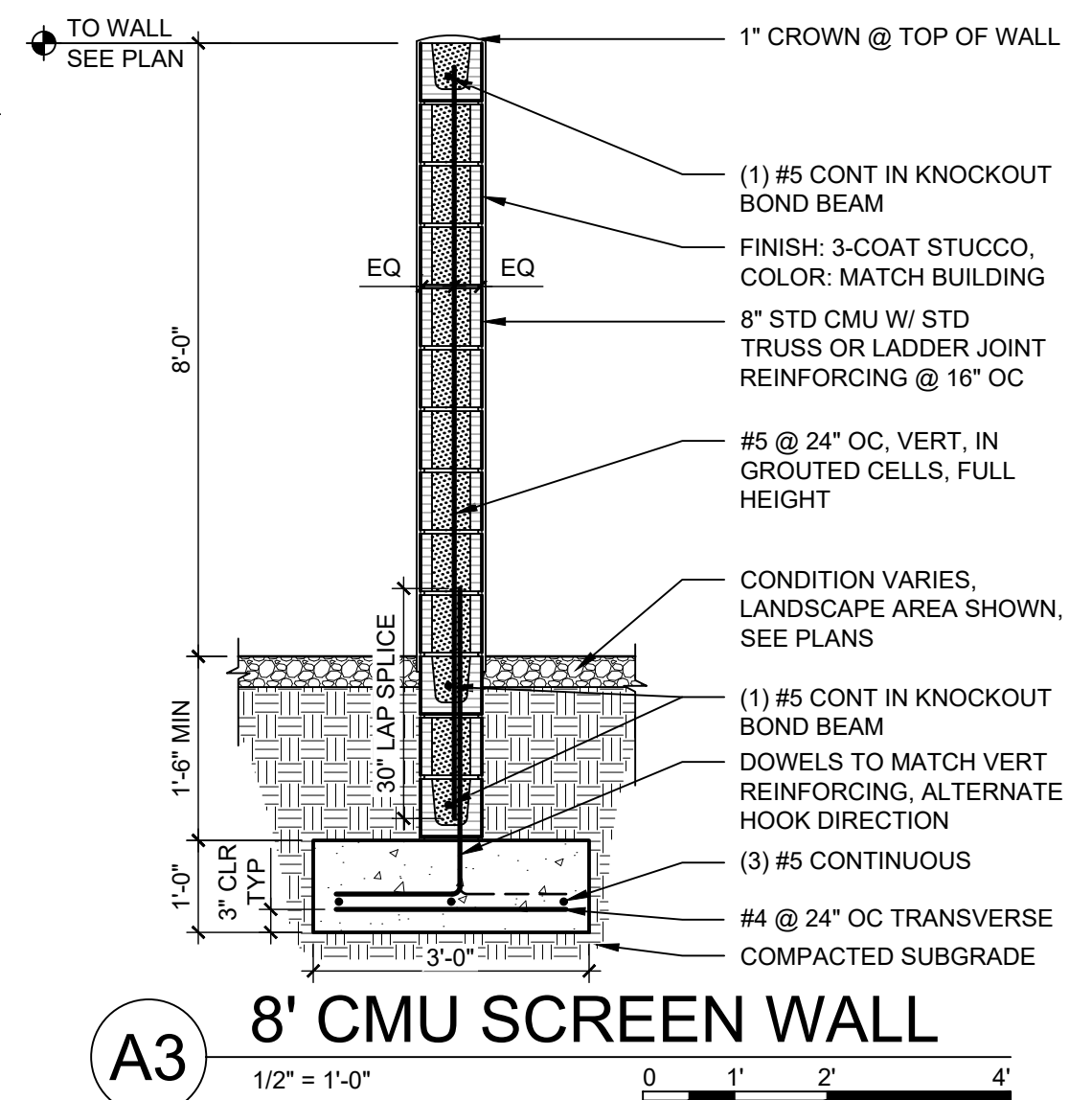
**B4** POLE MOUNTED SIGN  
1/2" = 1'-0"



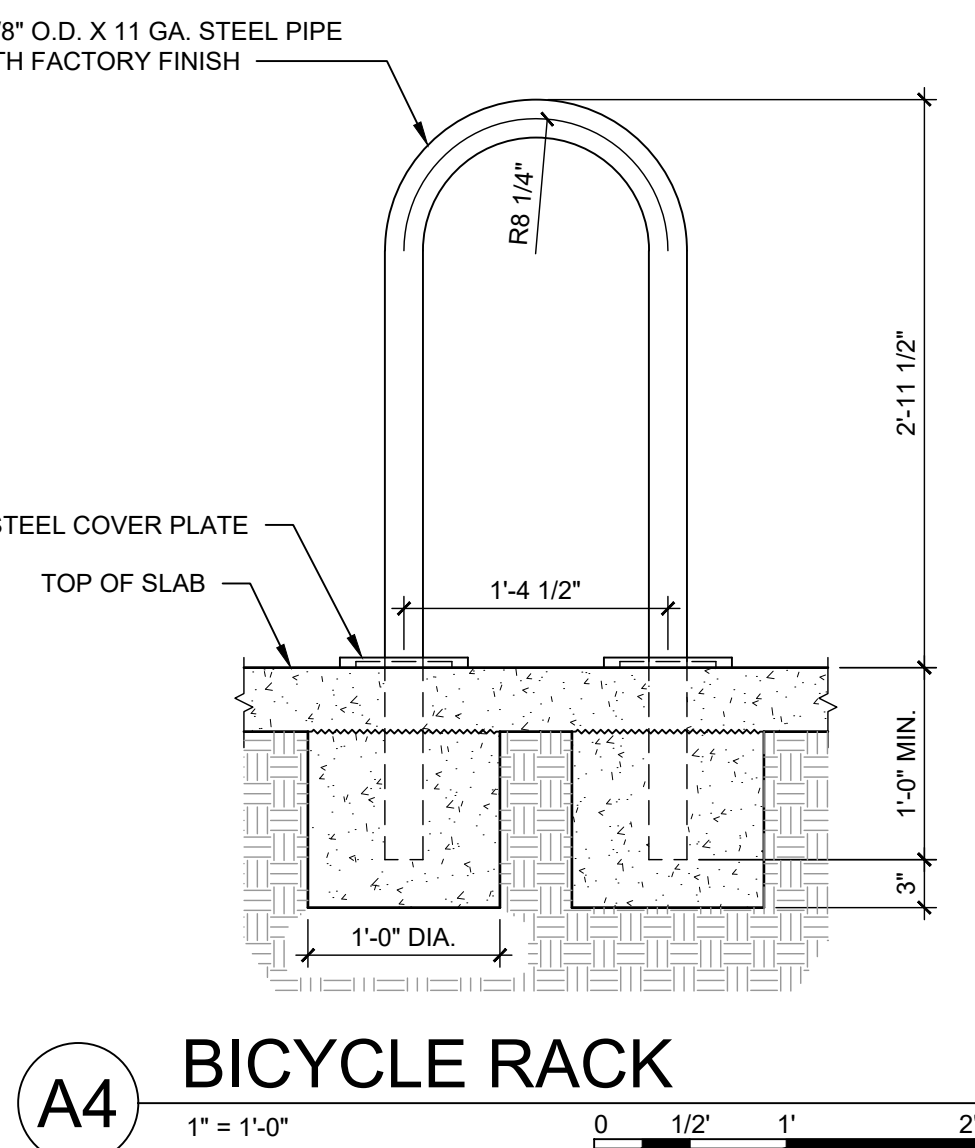
**B5** TRASH ENCLOSURE CMU WALL AND GATE  
1/2" = 1'-0"

CONTROL AND EXPANSION JOINT SPACING - UNLESS NOTED OTHERWISE ON PLANS				
APPROX WIDTH OF CONCRETE	CURB & GUTTER, ROLL, HEADER, FLUSH CURBS	5' WALK	8' WALK & BLDG APRON	6'-12' WALK
CONTROL JOINTS	4' OC	5' OC	8' OC	6' OC
EXPANSION JOINTS	16' OC	15' OC	24' OC	18' OC

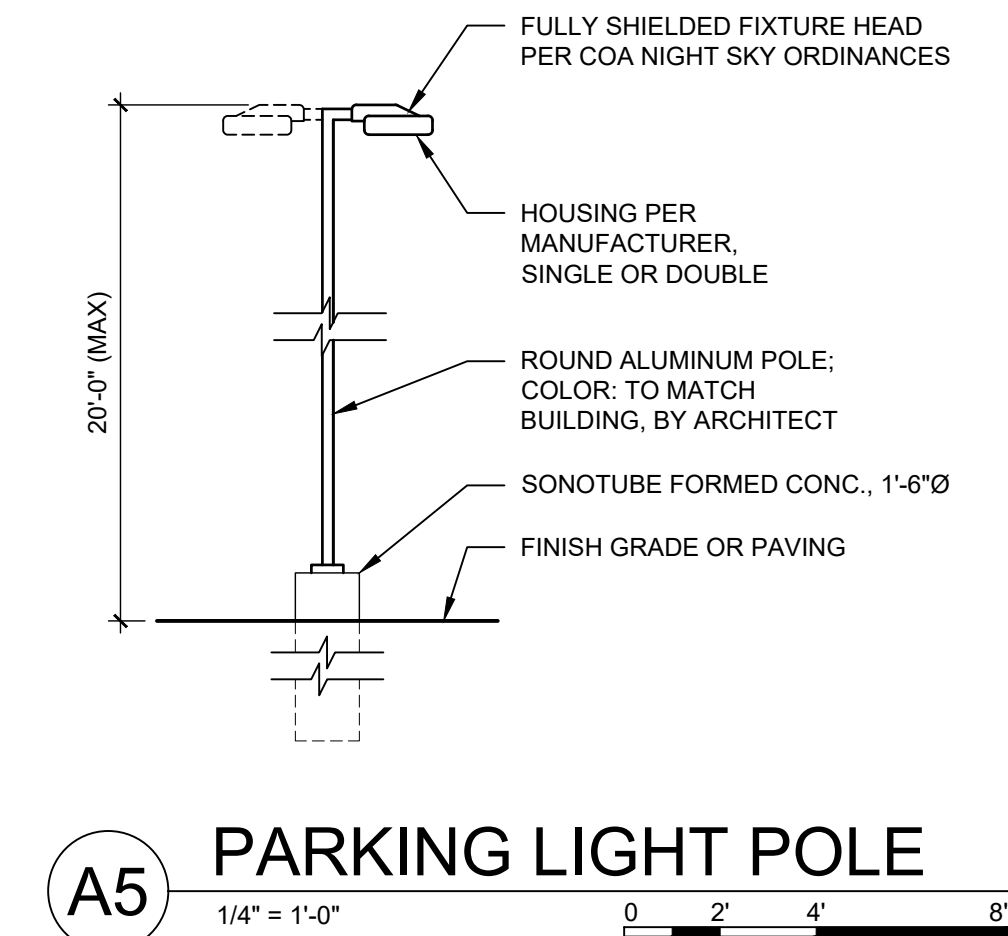
**A1** CONCRETE JOINTS & JOINT SPACING  
1 1/2" = 1'-0"



**A3** 8' CMU SCREEN WALL  
1/2" = 1'-0"



**A4** BICYCLE RACK  
1" = 1'-0"



**A5** PARKING LIGHT POLE  
1/4" = 1'-0"

SITE DETAILS

AS501