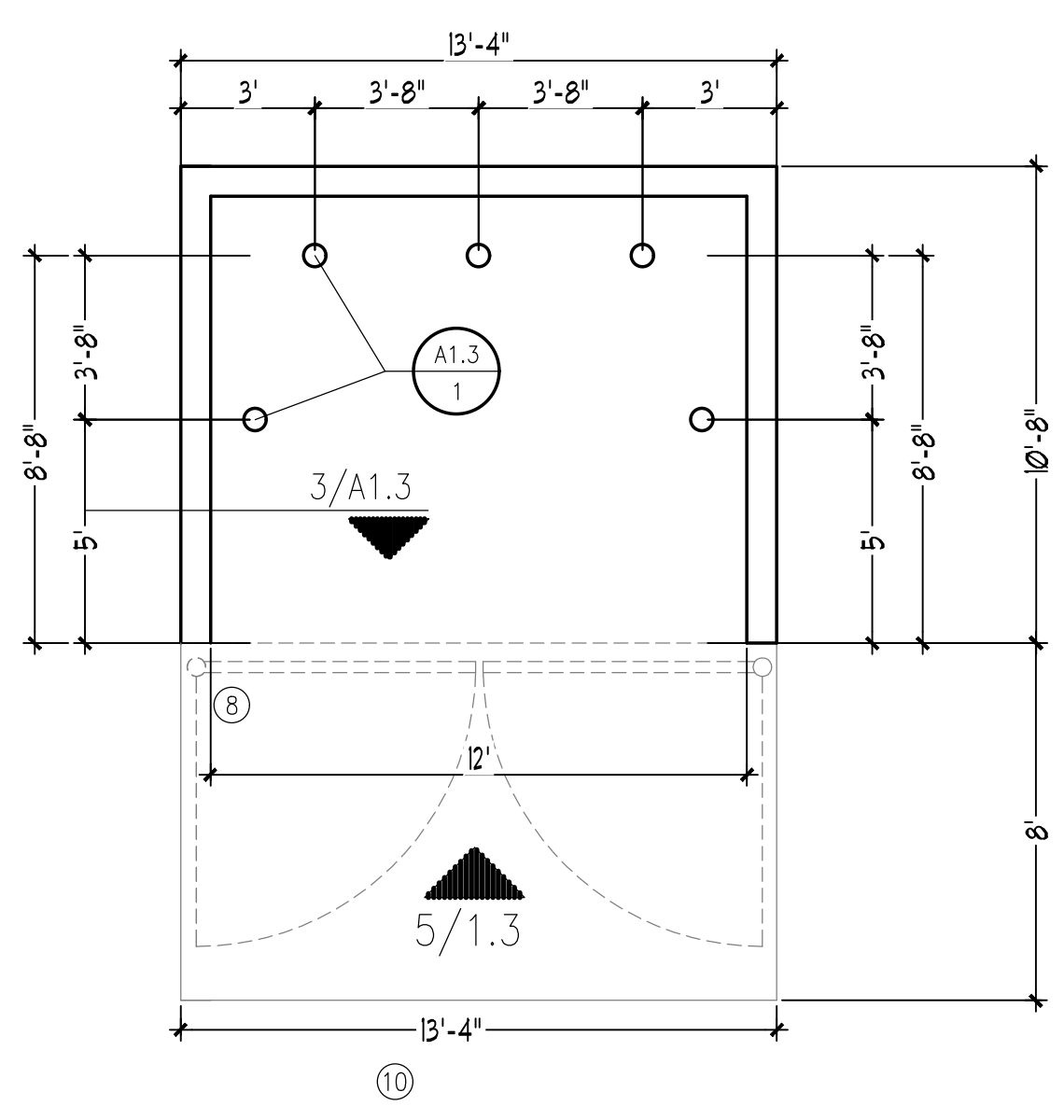


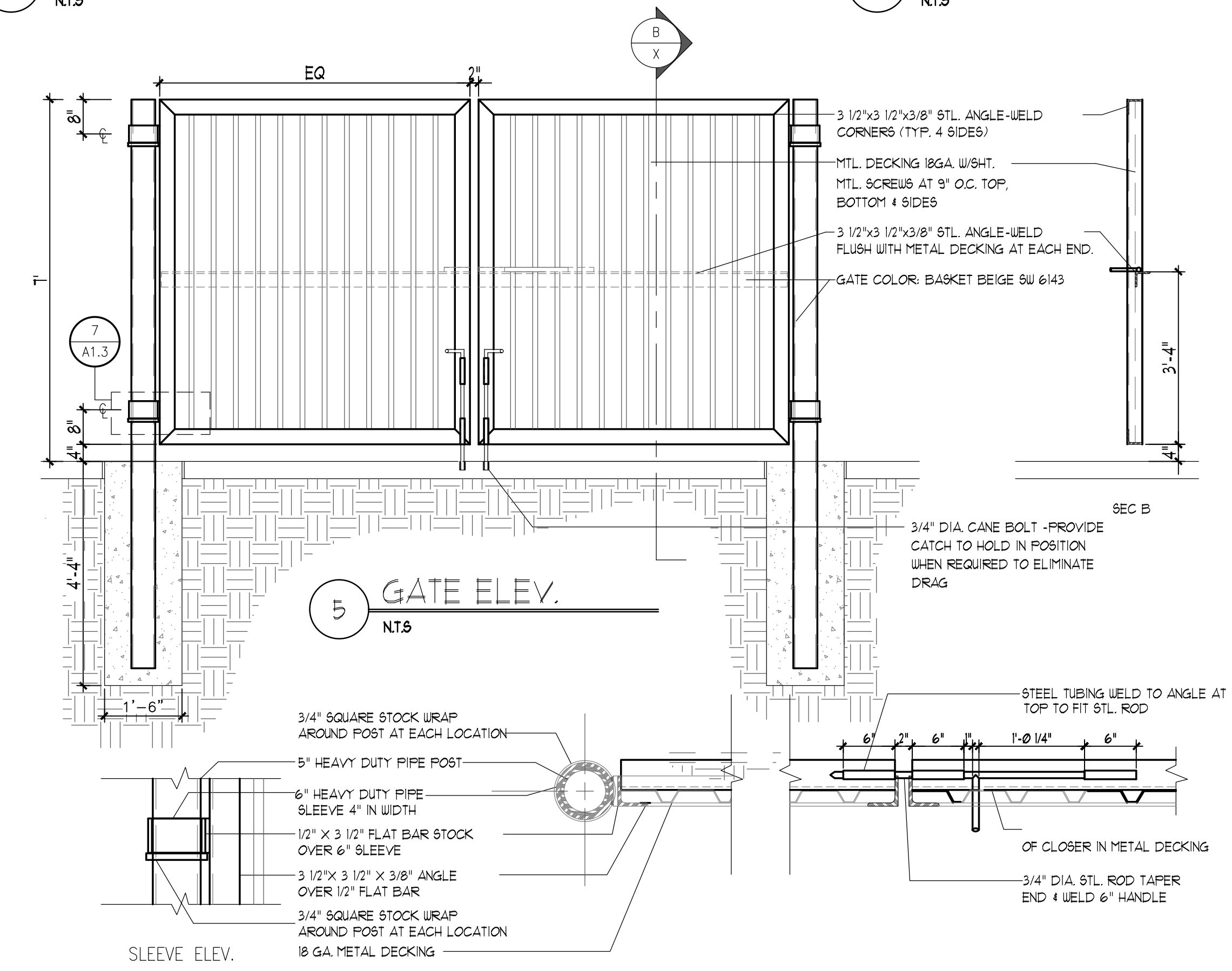
1 BOLLARD DETAIL
NTS

2 DUMPSTER SEC.
NTS

3 DUMPSTER SEC.
NTS



4 DUMPSTER PLAN
NTS



5 GATE ELEV.
NTS

7 GATE POST/SLIDE BOLT DETAIL
NTS

KEYED NOTES

- 1 8" CMU WALL WITH 2 COAT SYN. STUCCO SYSTEM. COLOR TO MATCH BLDG. BASE
- 2 FINISH GRADE.
- 3 SLOPE STUCCO CAP.
- 4 4-M BARS CONT. @ BOTTOM OF FOOTING #4 @ 16" O.C. ACROSS BOTTOM OF FOOTING.
- 5 2-#5 BARS @ TOP KNOCK-OUT BLOCK BOND BEAM. CONTINUOUS. #5 BARS @ 32" O.C. VERTICAL. GROUT REINFORCED CELLS. DURAWALL @ 16" O.C. HORIZONTAL.
- 6 1/2" EXPANSION JOINT MATERIAL
- 7 4" CONCRETE SLAB. 4000 PSI 3/4" AGGREGATE WITH 6x6 - 10x10 W/M.
- 8 6" CONCRETE APRON 4000 PSI 3/4" AGGREGATE WITH 6x6 - 10x10 W/M W/ TURNDOWN EDGE.
- 9 6" CONCRETE FILLED PIPE IN 16" DIA. X 2'-6" DEEP CONC. FOOTING. PAINT TO MATCH STUCCO FINISH.
- 10 ASPHALT PAVING
- 11 GROUT ALL CELLS SOLID BELOW GRADE. TYPICAL.
- 12 2" VENT TO 46" ABOVE TOP OF ENCLOSURE WALL. PROVIDE BREATHABLE VENT CAP.
- 13 CLEAN OUT. SEE DET 11A13 FOR INFO
- 14 CATCH BASIN. 6" X 20", SANI-FLO CATCH BASIN. FABRICATED #6 GAGE TYPE 304 STAINLESS STEEL. BASIN WITH BOLTED FLANGED CONNECTION. COMPLETE WITH FLANGE GASKET. PROVIDE SPECIAL DUTY, CLASS "E" 2-882-DGE, DUCTILE IRON SLOTTED GRATE, AND SEDIMENT BASKET.

6 ENCLOSURE NOTES
NTS

REV	DATE	BY	REVISION
1			
2			
3			
4			
5			

MODULUS ARCHITECTS
 100 SUN AVENUE N.E., Ste 305
 ALBUQUERQUE, NEW MEXICO 87109
 PHONE (505) 338-1499 FAX (505) 338-1498

STATE OF NEW MEXICO
 REGISTERED ARCHITECT
 STEPHEN A. DUNBAR
 No. 4218
 20Jan2020

PROJECT TITLE
COTTONWOOD MALL
 10000 Coors Bypass NW
 ALBUQUERQUE, NEW MEXICO 87114

PROJECT MANAGER
DEW MOYER

JOB NO.
 Cottonwood PD-1

DRAWN BY
 JRM

SHEET TITLE
SITE DETAILS

DATE: 07.15.2019	sheet:
SCALE: AS NOTED	A1.3