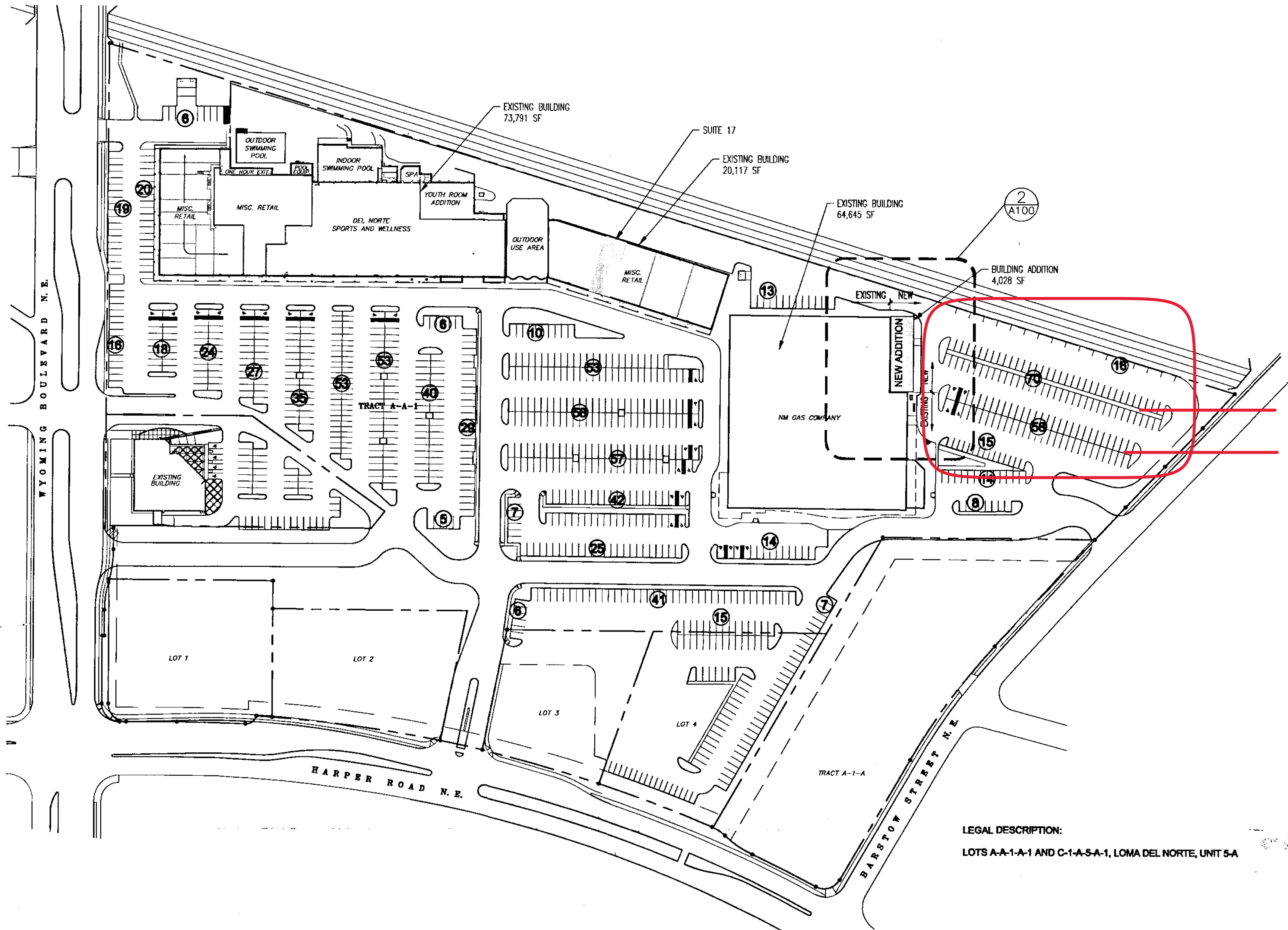


ADMINISTRATIVE AMENDMENT

FILE #: _____ PROJECT #: _____

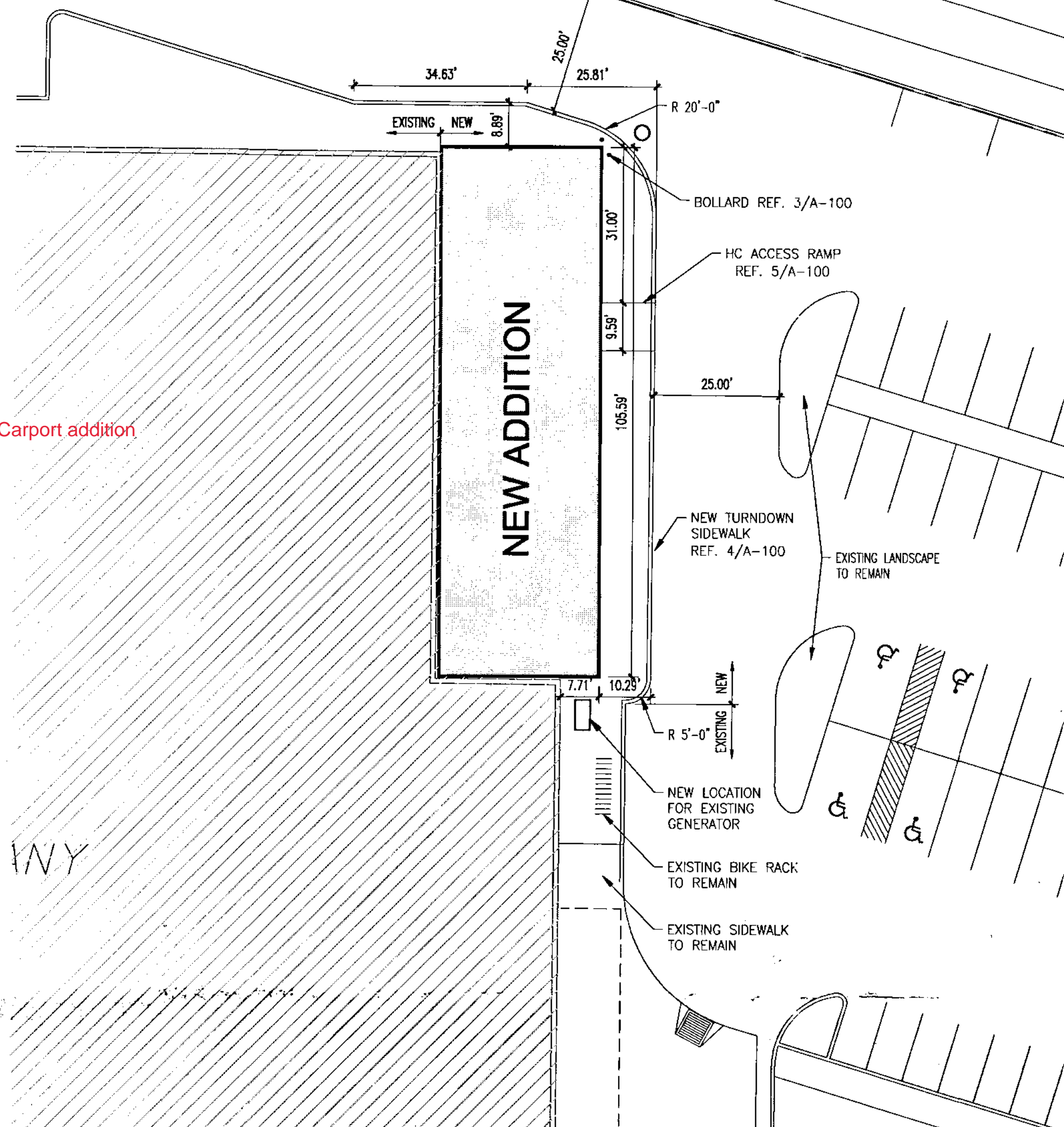
APPROVED BY

DATE

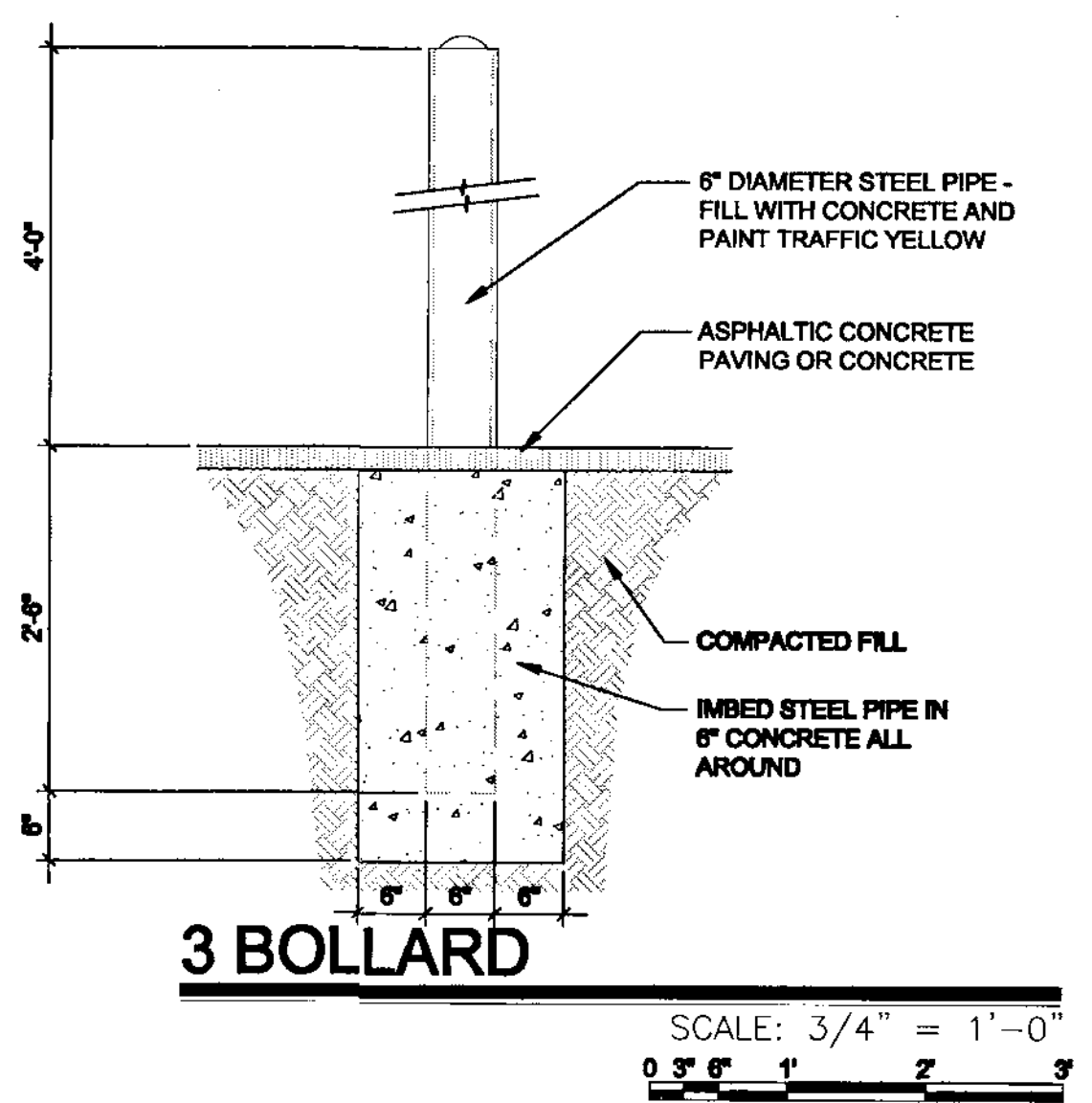


1 SITE PLAN
SCALE: 1" = 100'-0"

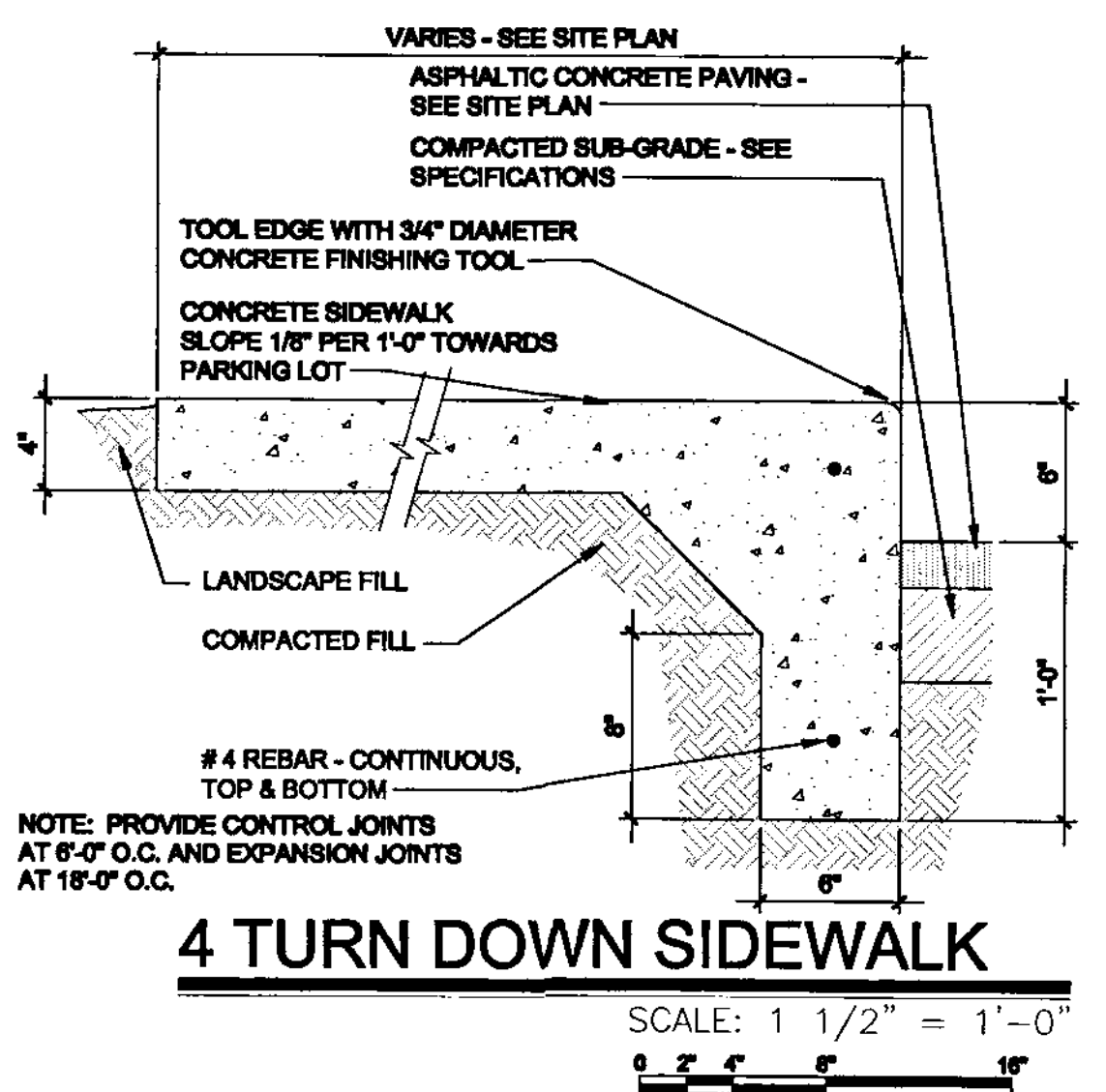
ADMINISTRATIVE AMENDMENT
FILE # 11-10155 PROJECT # 1000331
approx. 4,000 sq. ft. bldg. addn.
Manone 1/18/12
APPROVED BY DATE



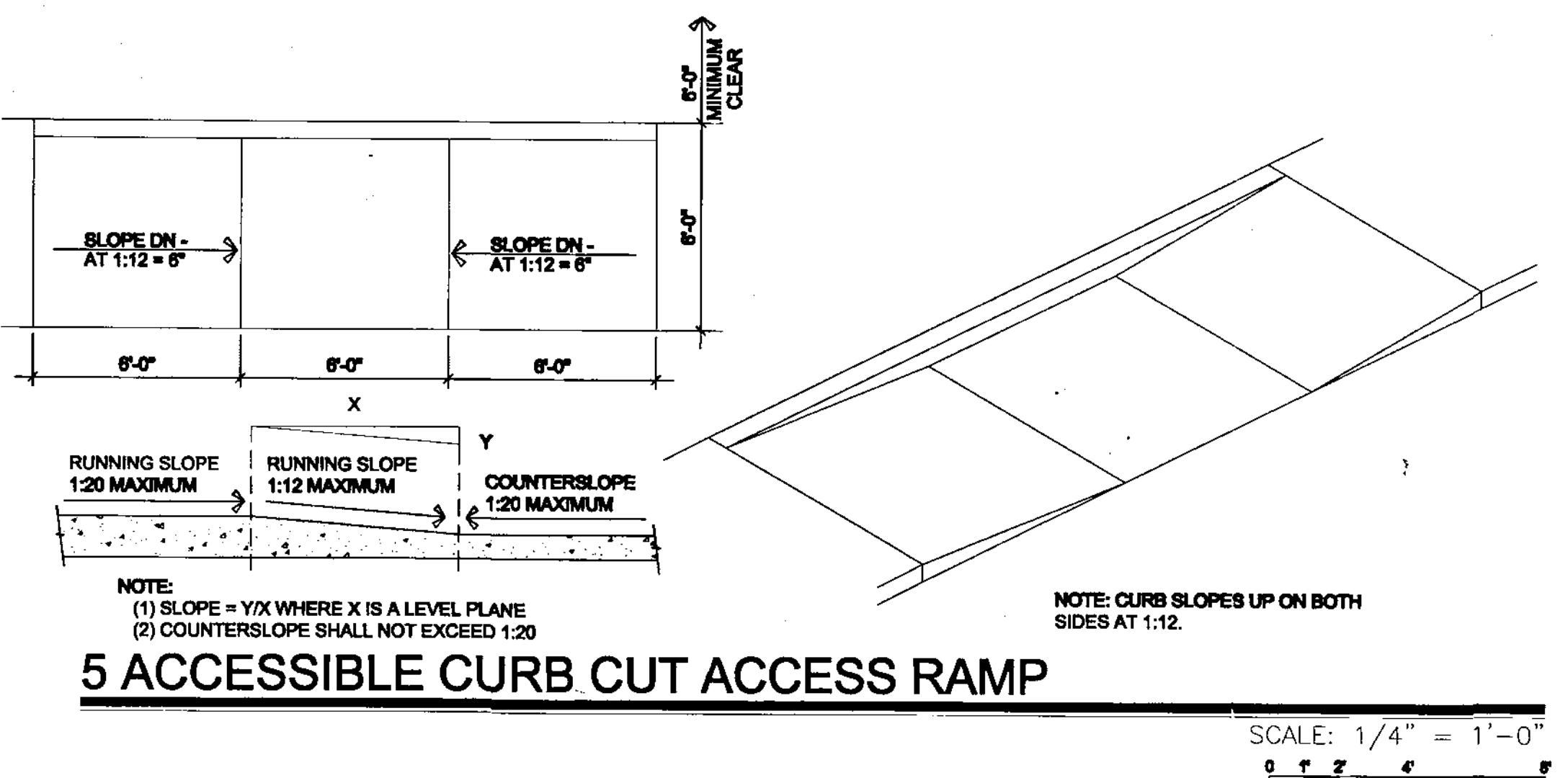
2 ENLARGED SITE PLAN
SCALE: 1" = 20'-0"



3 BOLLARD
SCALE: 3/4" = 1'-0"



4 TURN DOWN SIDEWALK
SCALE: 1 1/2" = 1'-0"



5 ACCESSIBLE CURB CUT ACCESS RAMP
SCALE: 1/4" = 1'-0"

GENERAL NOTES

CONTRACTOR TO COORDINATE LOCATION OF ALL UTILITY ENTRANCES INCLUDING BUT NOT LIMITED TO SANITARY SEWER, STORM SEWER, DOMESTIC WATER SERVICE, FIRE PROTECTION WATER SERVICE, ELECTRICAL AND TELEPHONE SERVICE. CONTRACTOR TO COORDINATE LOCATIONS IN SUCH A MANNER TO ASSURE PROPER DEPTHS ARE ACHIEVED, AS WELL AS COORDINATE WITH ANY UTILITY COMPANIES FOR APPROVED LOCATIONS AND SCHEDULING OF CONNECTION TO THEIR FACILITIES.

CONSTRUCTION SHALL COMPLY WITH ALL GOVERNING CODES AND BE CONSTRUCTED TO SAME.

CONTRACTOR SHALL FOLLOW ALL LOCAL, STATE AND FEDERAL REGULATIONS IN DISPOSING OF DEMOLISHED MATERIALS REMOVED FROM THIS SITE.

ALL UNSURFACED AREAS DISTURBED BY GRADING OPERATIONS SHALL RECEIVE 4" OF TOPSOIL.

THE CONTRACTOR SHALL CONFORM TO ALL CITY, STATE AND FEDERAL DUST AND EROSION CONTROL REGULATIONS. THE CONTRACTOR SHALL PREPARE AND OBTAIN ANY NECESSARY DUST OR EROSION CONTROL PERMITS FROM REGULATORY AGENCIES.

THE CONTRACTOR SHALL PROMPTLY REMOVE ANY MATERIAL EXCAVATED WITHIN THE PUBLIC RIGHT OF WAY TO KEEP IT FROM WASHING OFF THE PROJECT SITE.

THE CONTRACTOR SHALL ENSURE THAT NO SOIL ERODES FROM THE SITE ON TO OTHER PROPERTIES BY CONSTRUCTING TEMPORARY EROSION CONTROL BERM OR INSTALLING SILT FENCES AND WETTING THE SOIL TO KEEP IT FROM BLOWING.

WATERING, AS REQUIRED FOR CONSTRUCTION AND DUST CONTROL SHALL BE CONSIDERED INCIDENTAL TO CONSTRUCTION AND NO MEASUREMENT OF PAYMENT SHALL BE MADE THEREFOR. CONSTRUCTION AREAS SHALL BE WATERED FOR DUST CONTROL IN COMPLIANCE WITH GOVERNMENT ORDINANCES. THE CONTRACTOR SHALL BE RESPONSIBLE FOR LOCATING AND SUPPLYING WATER AS REQUIRED.

THE CONTRACTOR SHALL COMPLY WITH ALL APPLICABLE REGULATIONS CONCERNING CONSTRUCTION NOISE AND HOURS OF OPERATION.

PARKING

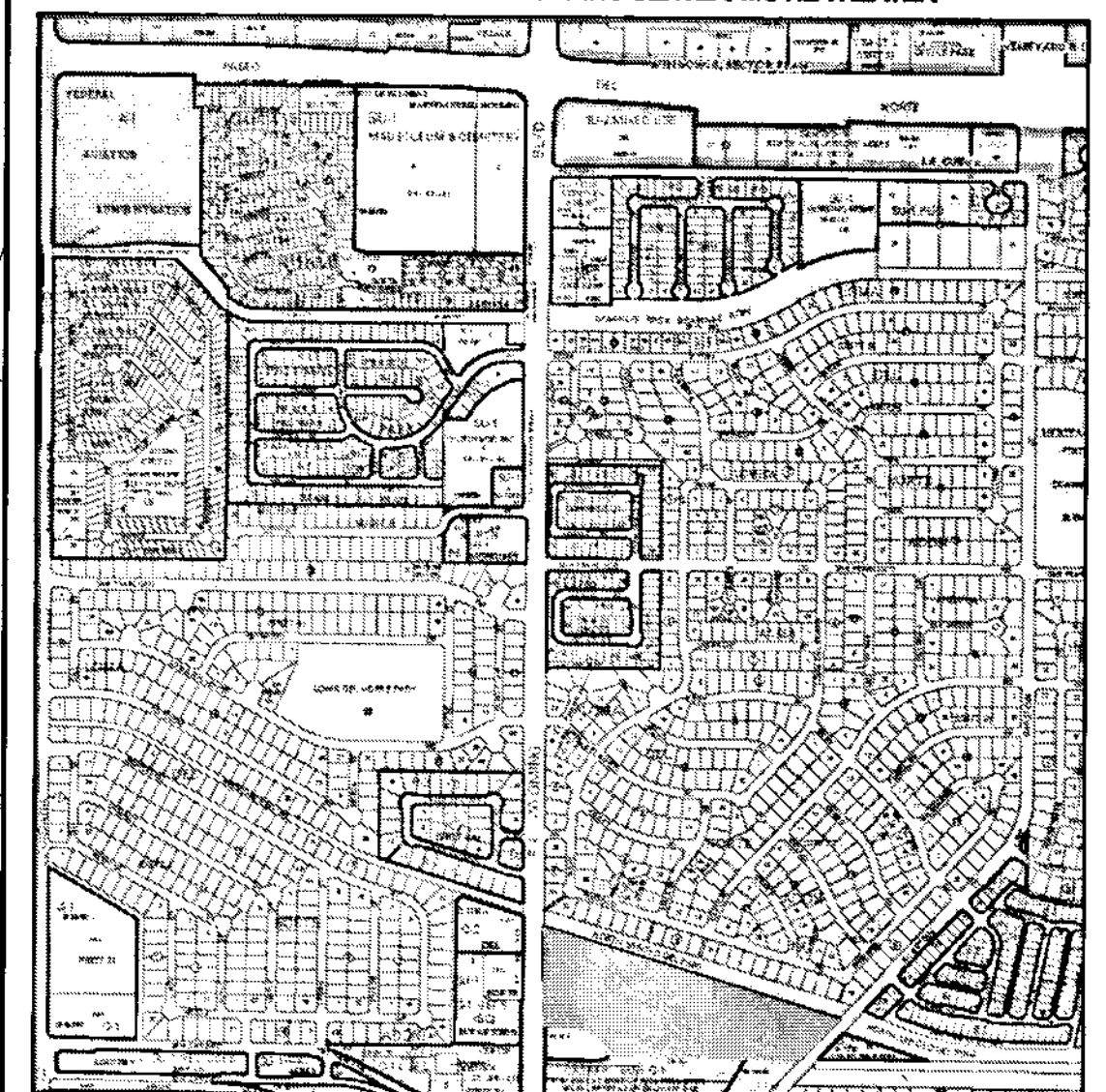
HEALTH CLUB 1,123 BIC OCCUPANTS / 3 SPACES PER OCCUPANT = 374 SPACES
RETAIL OCCUPANCY 28,399 TOTAL SQ. FT. = 121 SPACES
15,000 / 200 SQ. FT. FOR FIRST 15,000 SF = 75 SPACES
11,399 / 300 SQ. FT. FOR THE NEXT 45,000 SF = 48 SPACES
OFFICE 77,807 SQ. FT. / 200 SQ. FT. = 389 SPACES
DAY CARE CENTER 6,543 SQ. FT. / 800 SQ. FT. + 2 SPACES = 17+2 = 19 SPACES
SUBTOTAL PARKING REQUIRED = 904 SPACES
904 SPACES - 16% FOR ON SITE BUS SHELTER = 769 SPACES
TOTAL DISABLED SPACES REQUIRED = 16 SPACES
TOTAL SPACES REQUIRED = 769 (m) 769
TOTAL SPACES PROVIDED 887
TOTAL DISABLED SPACES PROVIDED = 28 SPACES
TOTAL BICYCLE SPACES PROVIDED = 36 SPACES

NOTE: THIS SITE WAS DEVELOPED PRIOR TO THE MOTORCYCLE PARKING REQUIREMENT

ZONING

ZONE GRID = D-19

ZONING SU-1 NEIGHBORHOOD SHOPPING CENTER/ MOVIE THEATER



No	Revision	Item	Date

SCOTT ANDERSON
ARCHITECT
7604 Rio Penasco NW, Albuquerque, New Mexico 87120
Phone (505) 401-7575 Email: andersonscott@comcast.net

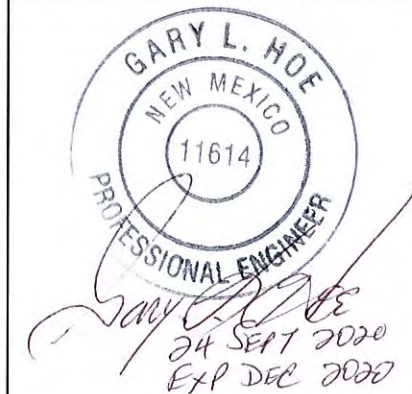
NM GAS COMPANY OFFICE ADDITION
7120 WYOMING BLVD. NE SUITE 20
ALBUQUERQUE, NM 87109

DRAWING TITLE: **ARCHITECTURAL SITE PLAN**

DESIGNED	PROJECT NO.
DRAWN	SCALE
CHECKED	DRAWING NO.
REVIEWED	A-100
DATE: 11/30/11	OF



3651 Princeton Dr NE
Albuquerque, NM 87107
(505) 344-0071
NM Electrical Contractor's
License #82573



Job 4437
**NM Gas Co. Wyoming
Business Center**
Utility-Interactive Photovoltaic System
System Size = 497.64 kWdc
7120 Wyoming Blvd NE
Albuquerque NM

DESIGN SUMMARY

Number of Modules	1,131
Module Tilt Angle	10°
Module Azimuth	195°
Average Annual Shading	3.00%
Year 1 Production Estimate	883420 kWh

DESIGN APPROVAL

I approve of this design showing all equipment and locations, and estimated production. Any change to this design may result in delays and additional costs.

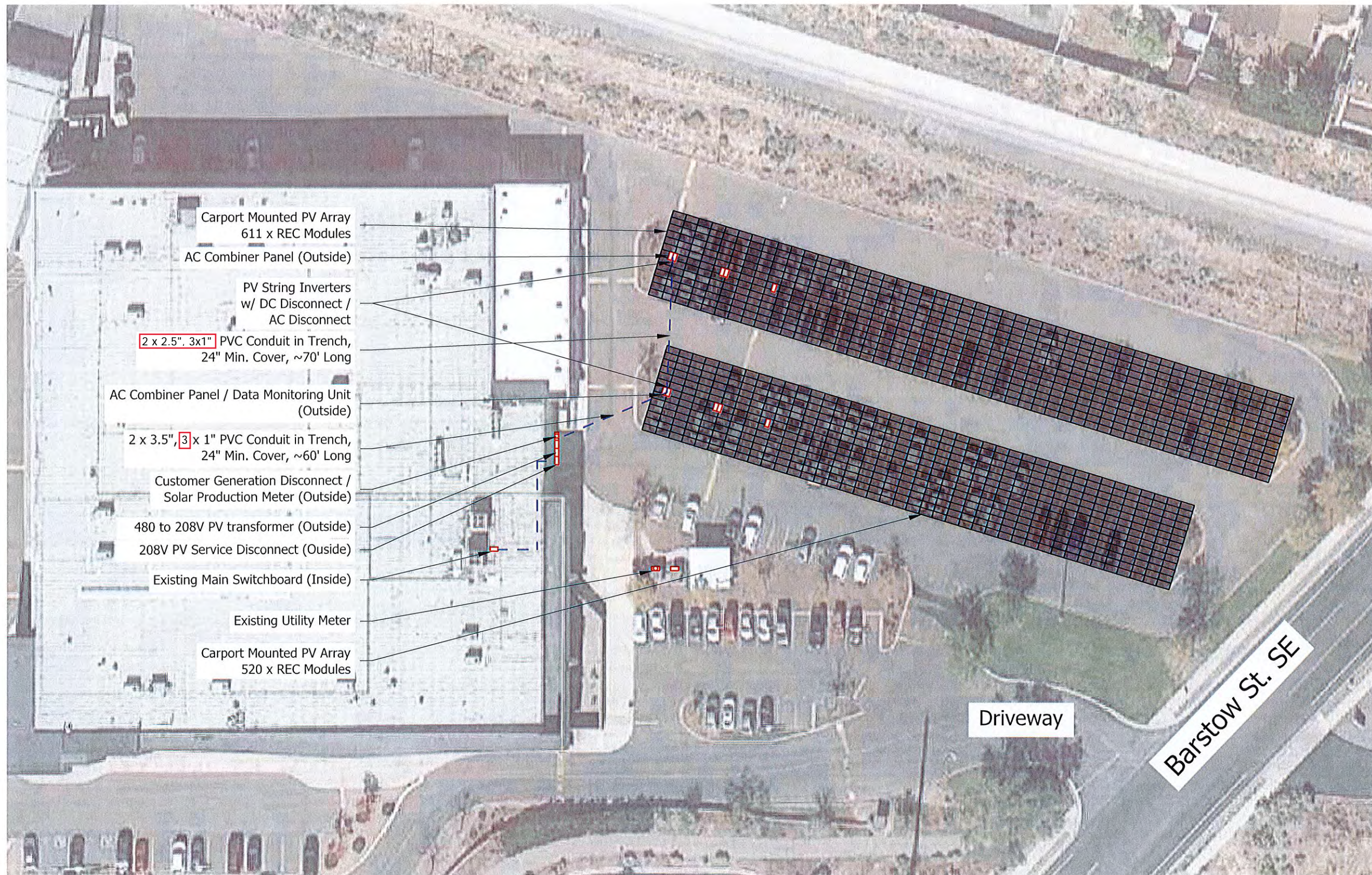
Signature:

Date:

DESIGNER:
David Dashiells

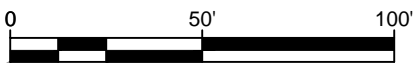
REV	DESCRIPTION	DATE
0	Initial Release	9/18/20

**SITE PLAN
PV100**



1	Special Access Instructions: NO ACCESS ISSUES
2	Exact location of equipment and conduit is subject to minor variations during installation.
3	Estimated annual energy production is based on existing site conditions and this array layout. Annual variations in weather and module degradation will affect production.

Inverters AC Capacity: $2 \times 62500W + 6 \times 50000 W = 425.00 \text{ kWac}$
Array STC Watts: $1131 \times 440 W = 497.64 \text{ kWdc}$
Combined Fault Current: 3520 Apk, 624.2 Arms; 26 ms



3651 Princeton Dr NE
Albuquerque, NM 87107
(505) 344-0071
NM Electrical Contractor's
License #82573

Job 4437
**NM Gas Co. Wyoming
Business Center**
Utility-Interactive Photovoltaic System
System Size = 497.64 kWdc
7120 Wyoming Blvd NE
Albuquerque NM

DESIGN SUMMARY

Number of Modules	1,131
Module Tilt Angle	10°
Module Azimuth	195°
Average Annual Shading	3.00%
Year 1 Production Estimate	883420 kWh

DESIGN APPROVAL

I approve of this design showing all equipment and locations, and estimated production. Any change to this design may result in delays and additional costs.

Signature:

Date:

DESIGNER:
David Dashiells

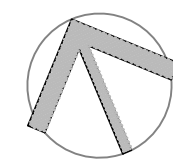
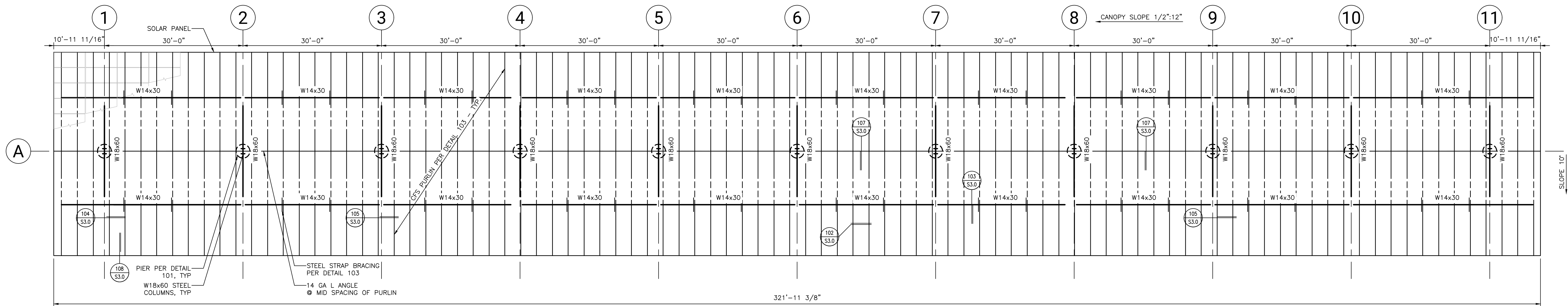
REV	DESCRIPTION	DATE
0	Initial Release	6/30/21

**SITE PLAN
PV103**



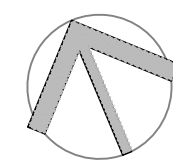
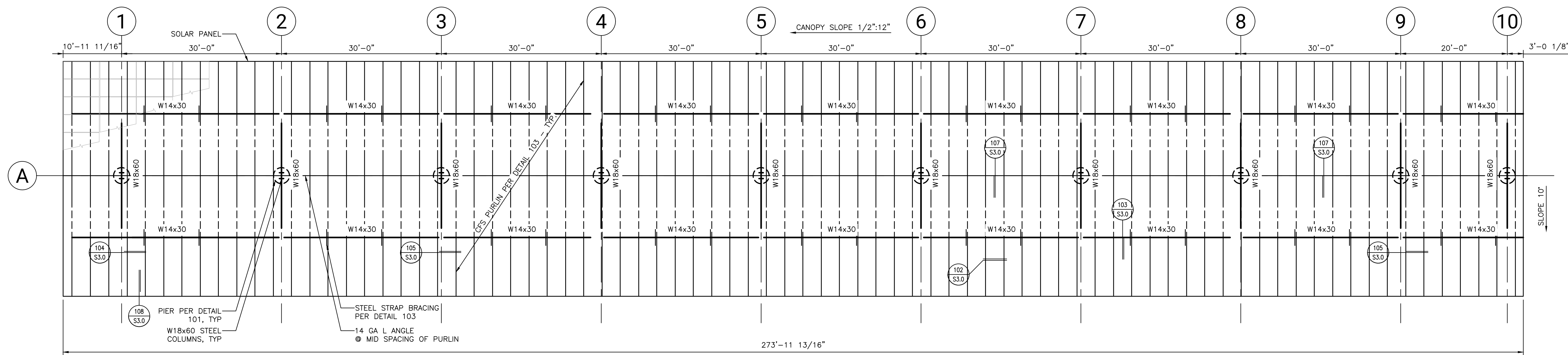
1	Special Access Instructions: NO ACCESS ISSUES
2	Exact location of equipment and conduit is subject to minor variations during installation.
3	Estimated annual energy production is based on existing site conditions and this array layout. Annual variations in weather and module degradation will affect production.

Inverters AC Capacity: 2 x 62500W + 6 x 50000 W = 425.00 kWac
Array STC Watts: 1131 x 440 W = 497.64 kWdc
Combined Fault Current: 3520 Apk, 624.2 Arms; 26 ms



SOLAR STRUCTURE CANOPY FRAMING PLAN

SCALE: 3/32" = 1'-0"



SOLAR STRUCTURE CANOPY FRAMING PLAN

SCALE: 3/32" = 1'-0"



STRUCTUROLOGY
CONSULTING STRUCTURAL ENGINEERS
PHONE: 480.269.7675
CONTACT@STRUCTUROLOGY.COM
WWW.STRUCTUROLOGY.COM
CHK'D: KRL ENGR: VK DRFT: VMR

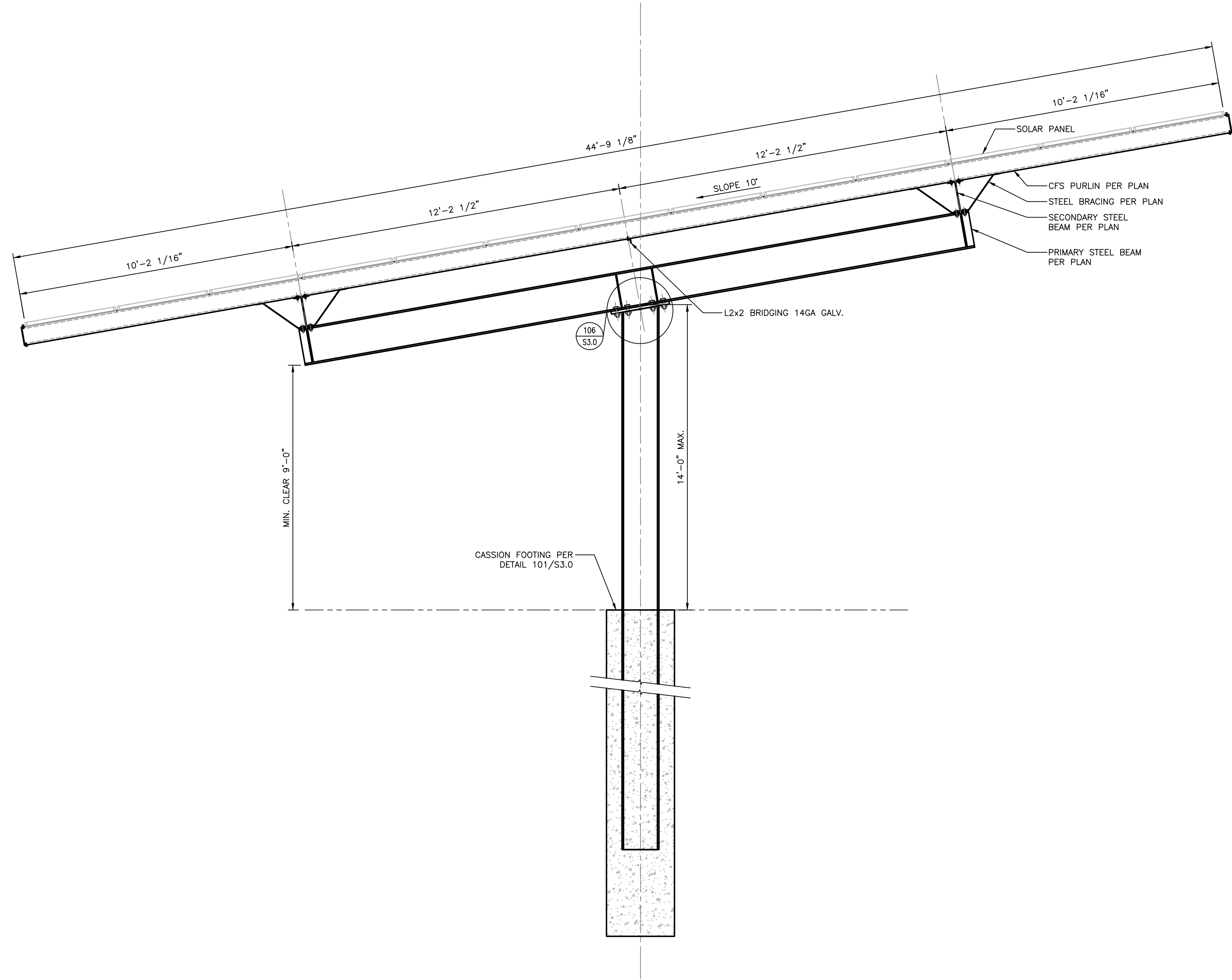
JOB NUMBER: 21006.003

REVISION	DESCRIPTION	REV	DATE
1	PERMIT SUBMITTAL		06/19/2021
PROJECT NOTES:			

NM Gas Co. Wyoming Business Center 7120 W Wyoming Blvd. NE Albuquerque NM		DRAWN BY: VMR		CHECKED BY: KRL	
CUSTOMER: Positive Energy Solar		DRAFTING SERVICE: STRUCTUROLOGY		3263-21385	
REV. NO. 1		JOB NO.		S1.0	
DWG. NO.					

RESOLUTE
Performance Contracting

PHONE (623) 208 7560
FAX (623) 748 0368
627 S 48th Street, Suite 105
TEMPE, AZ 85281



SECTION STEEL COLUMN AND BEAM AT
CONCRETE FOOTING

SCALE: 3/8" = 1'-0"



STRUCTUROLOGY
CONSULTING STRUCTURAL ENGINEERS

PHONE: 480.269.7675
CONTACT@STRUCTUROLOGY.COM
WWW.STRUCTUROLOGY.COM

CHK'D: KRL ENGR: VK DRFT: VMR

JOB NUMBER: 21006.003

DATE	REV	REVISION/DESCRIPTION
06/19/2021	1	PERMIT SUBMITTAL
PROJECT NOTES:		

NM Gas Co. Wyoming Business Center
7120 W Wyoming Blvd. NE Albuquerque NM

CUSTOMER: Positive Energy Solar

REV. NO. 1

DRAFTING SERVICE: STRUCTUROLOGY

DRAWN BY: VMR

CHECKED BY: KRL

JOB NO.

3263-21385

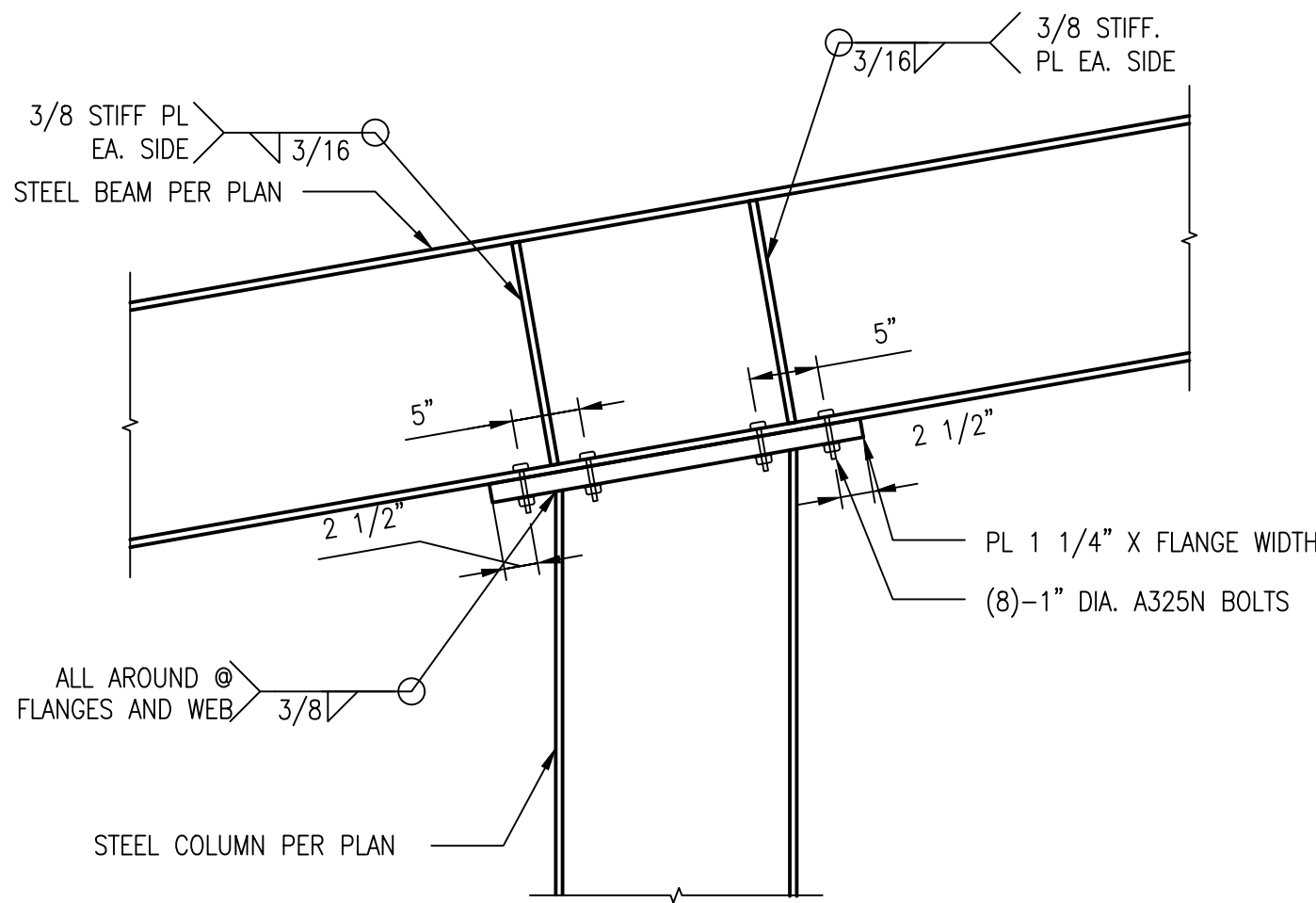
DWG. NO.

S2.0

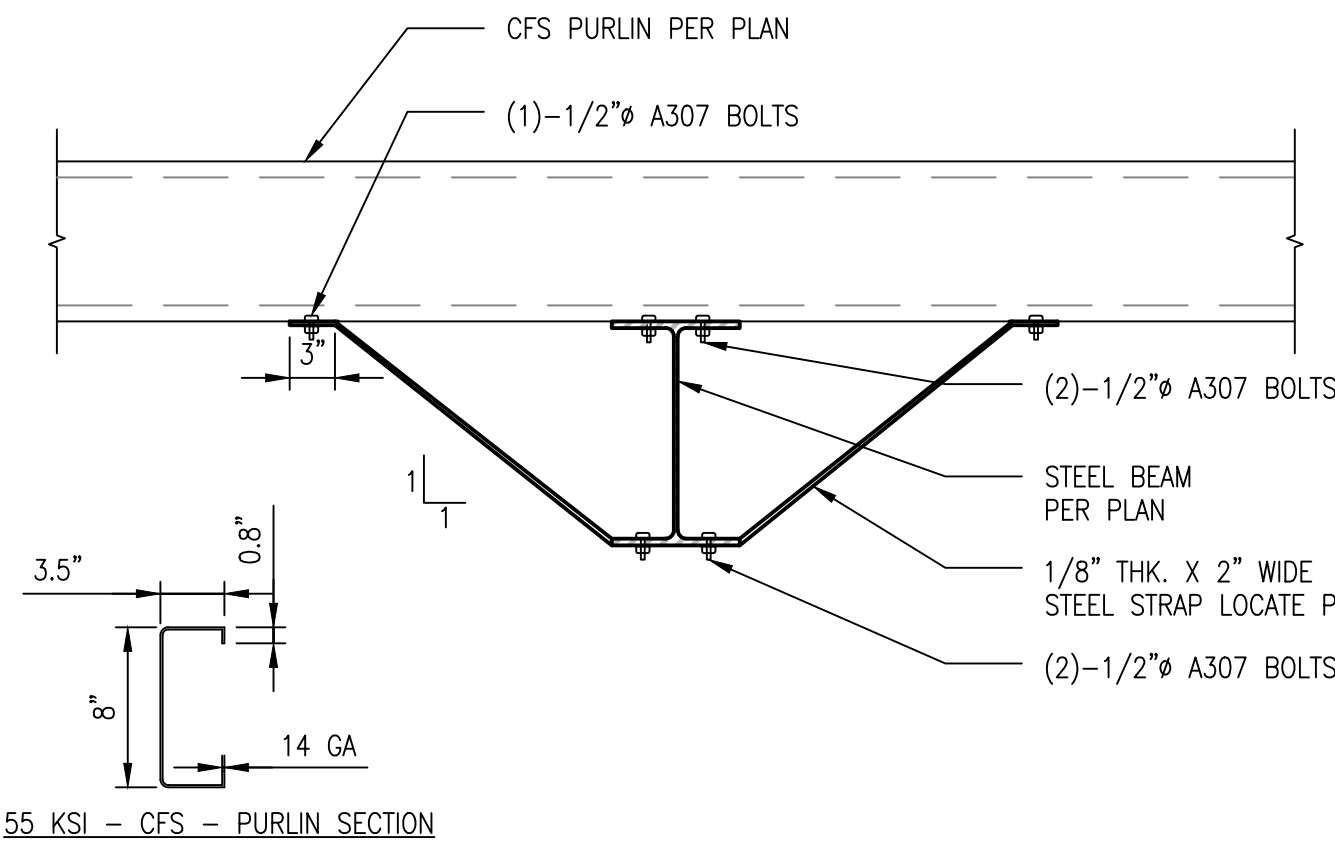


PHONE (623) 208 7560
FAX (623) 748 0368
627 S 48th Street, Suite 105
TEMPE, AZ 85281

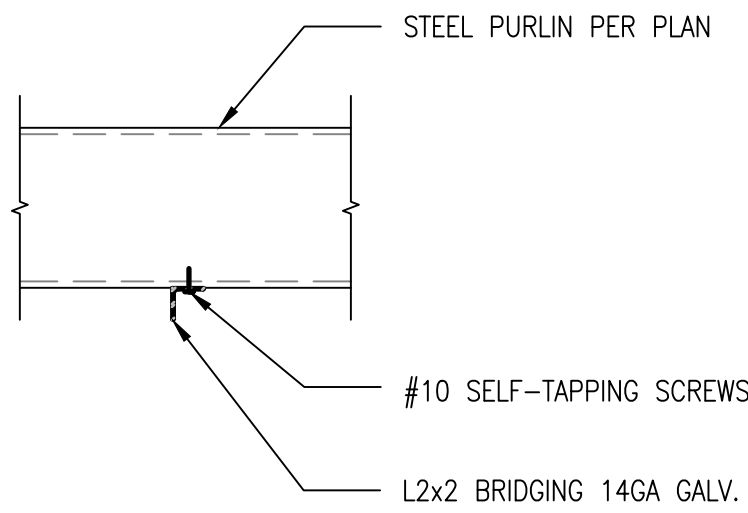
NOTE :
10 DEG SLOPE DOWN N-S DIRECTION
1/2" ON 12" SLOPE DOWN ON E-W DIRECTION
CAP PLATE HAS COMPOUND SLOPE



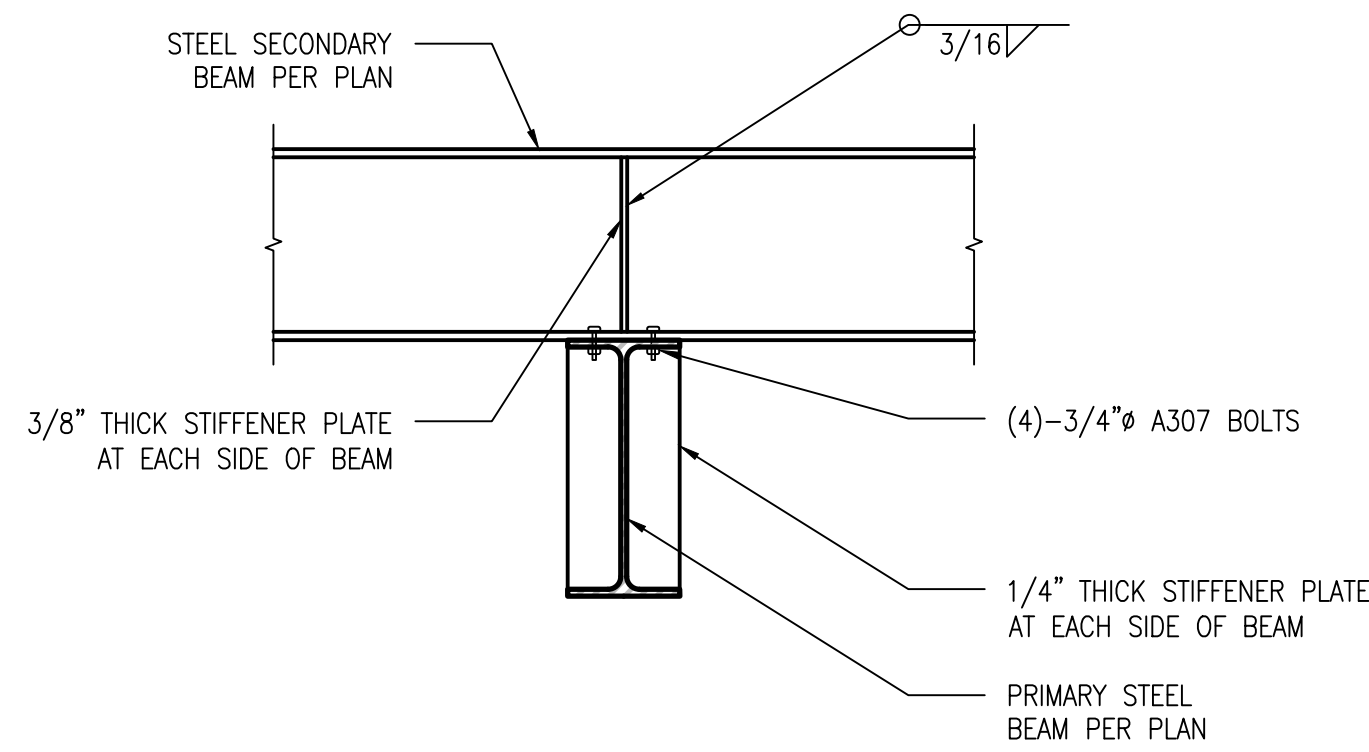
106 COLUMN TO BEAM CONECTION
S3.0 NOT TO SCALE



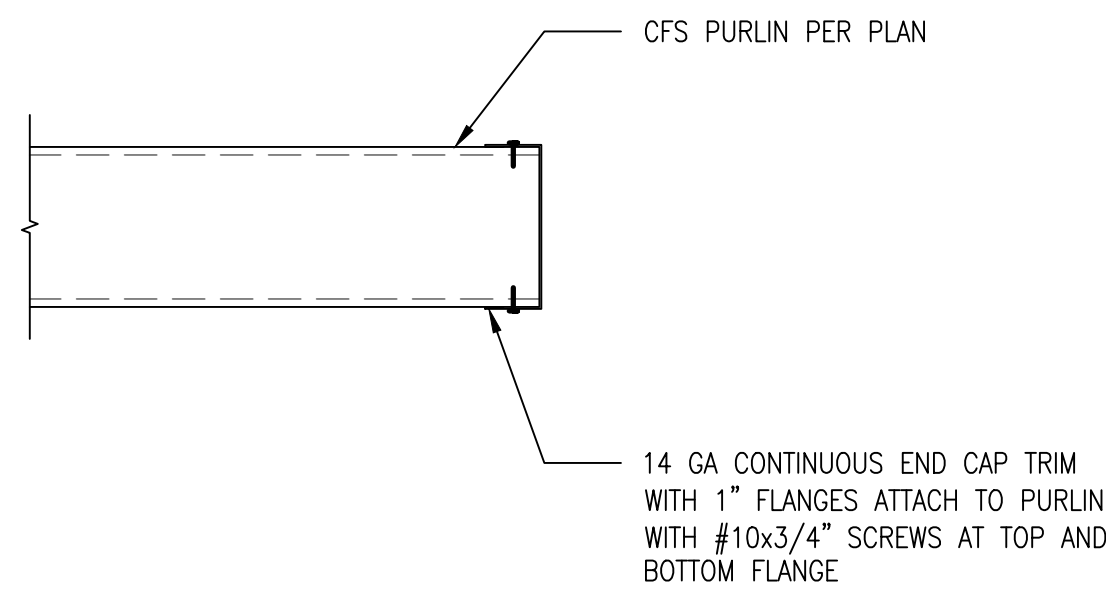
103 STEEL PURLIN TO STEEL BEAM
S3.0 NOT TO SCALE



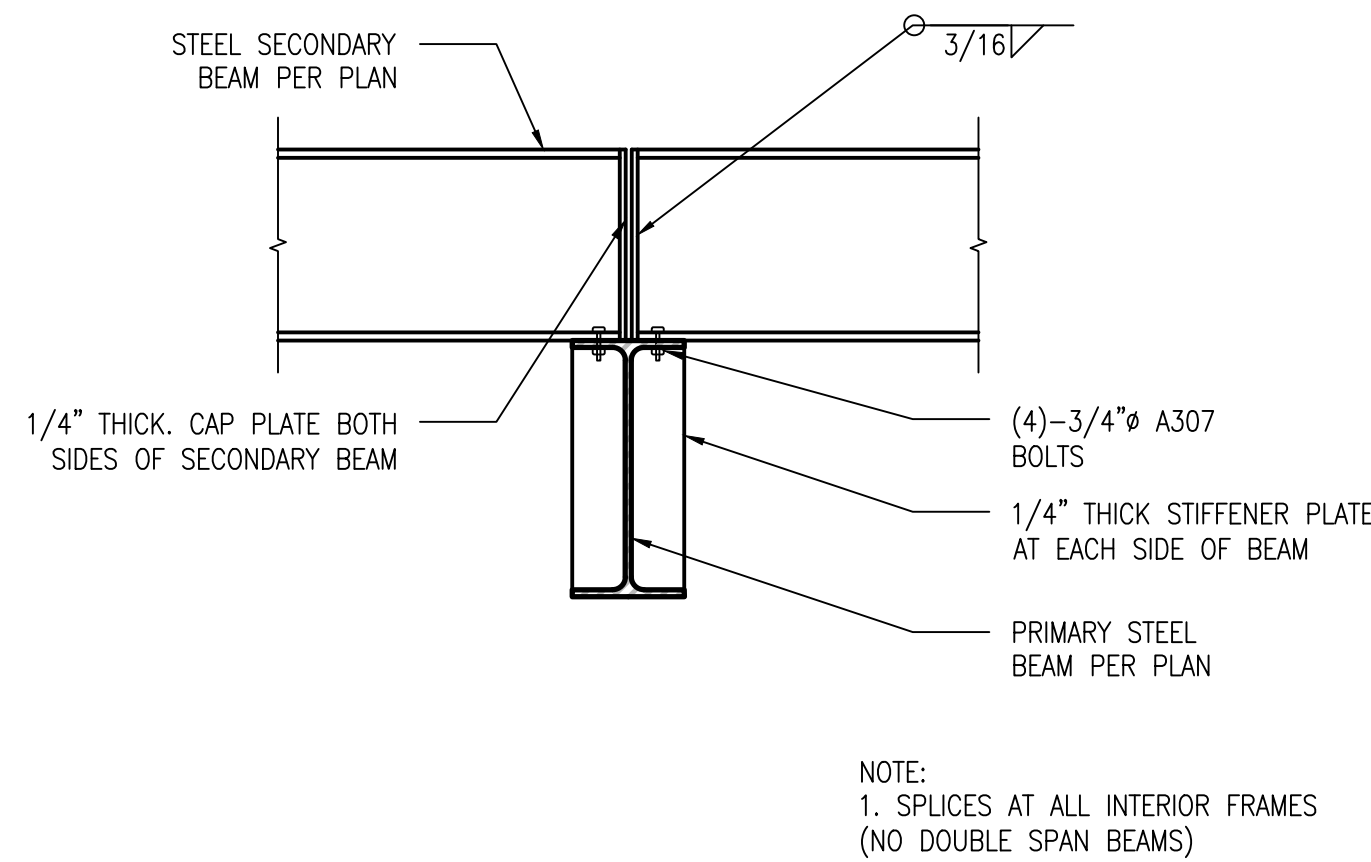
107 14GA L ANGLE
S3.0 NOT TO SCALE



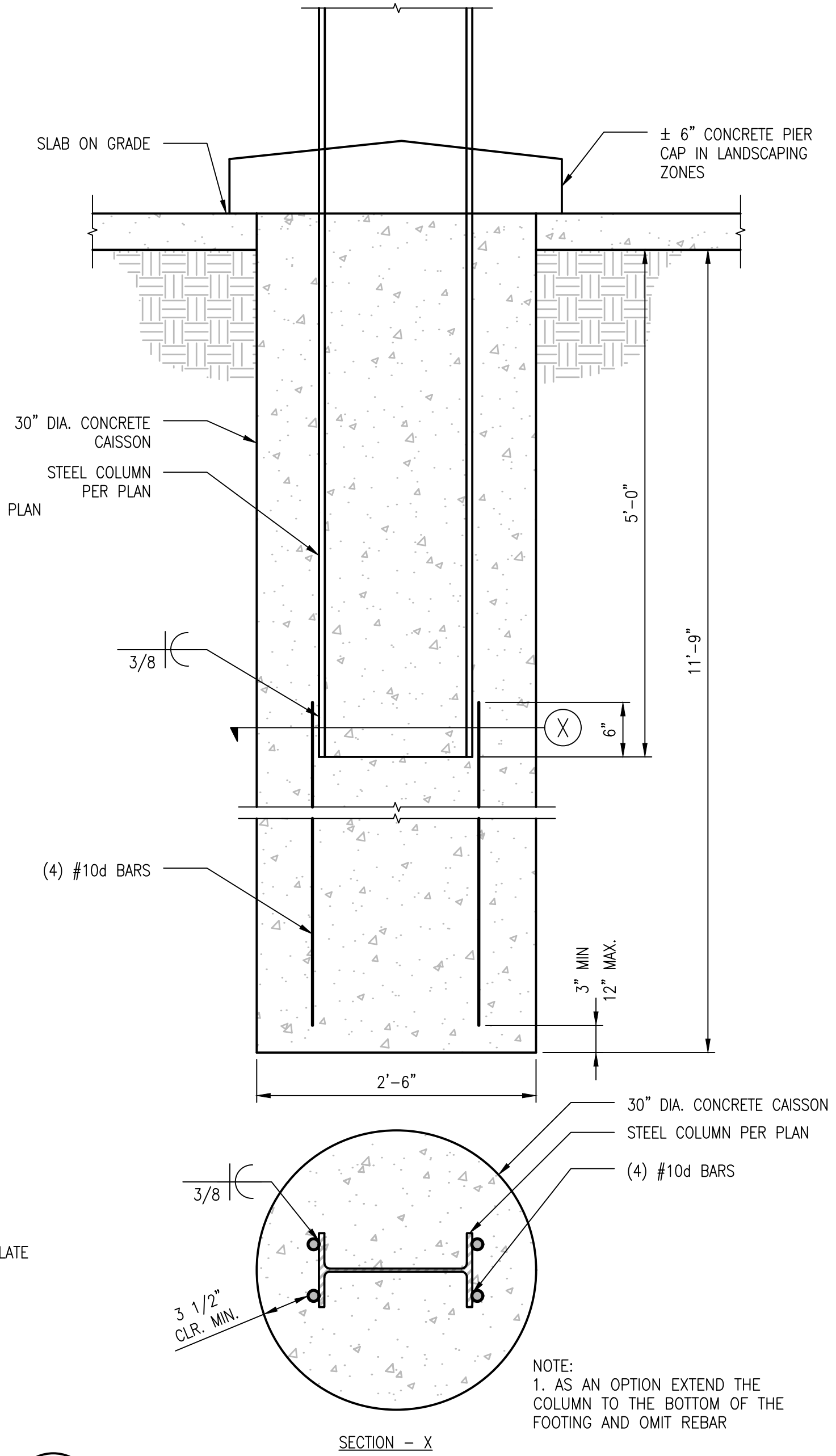
104 SECONDARY STEEL BEAM TO PRIMARY STEEL BEAM CONNECTION
AT EXTERIOR FRAMES
S3.0 NOT TO SCALE



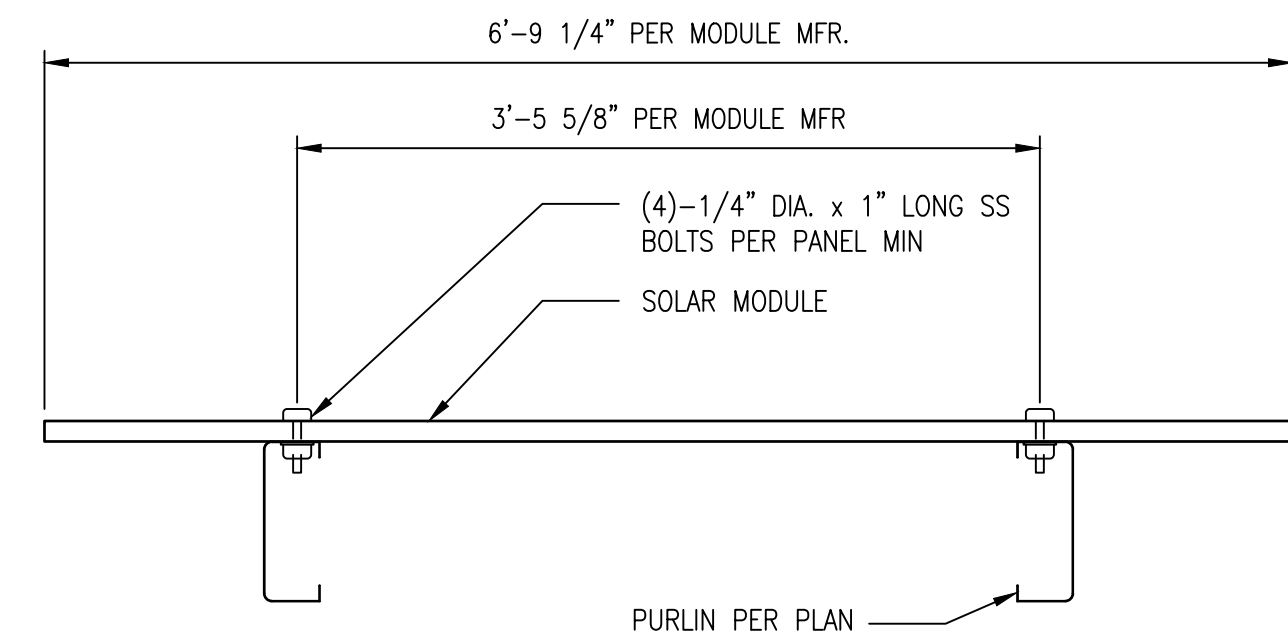
108 END CAP AT STEEL PURLIN
S3.0 NOT TO SCALE



105 SECONDARY STEEL BEAM TO PRIMARY STEEL BEAM CONNECTION
AT INTERIOR FRAMES
S3.0 NOT TO SCALE



101 STEEL COLUMN FOOTING
S3.0 NOT TO SCALE



102 SOLAR PANEL @ STEEL PURLIN
S3.0 NOT TO SCALE



STRUCTUROLOGY
CONSULTING STRUCTURAL ENGINEERS
PHONE: 480.269.7675
CONTACT@STRUCTUROLOGY.COM
WWW.STRUCTUROLOGY.COM
CHK'D: KRL ENGR: VK DRFT: VMR

JOB NUMBER: 21006.003

REVISION	DESCRIPTION	REV	DATE
1	PERMIT SUBMITTAL		06/19/2021
PROJECT NOTES:			

NM Gas Co. Wyoming Business Center
7120 W Wyoming Blvd. NE Albuquerque NM
CUSTOMER: Positive Energy Solar
DRAFTING SERVICE: STRUCTUROLOGY
CHECKED BY: KRL
DRAWN BY: VMR
REV. NO. 1
JOB NO. 3263-21385
DWG. NO. S3.0

RESOLUTE
Performance Contracting

PHONE (623) 208 7560
FAX (623) 748 0368
627 S 48th Street, Suite 105
TEMPE, AZ 85281

