

A

5

EXISTING  
MALL  
ENTRY

GRAPHIC SCALE

( IN FEET )  
1 inch = 10 ft.

SCALE: 1" = 10'-0"



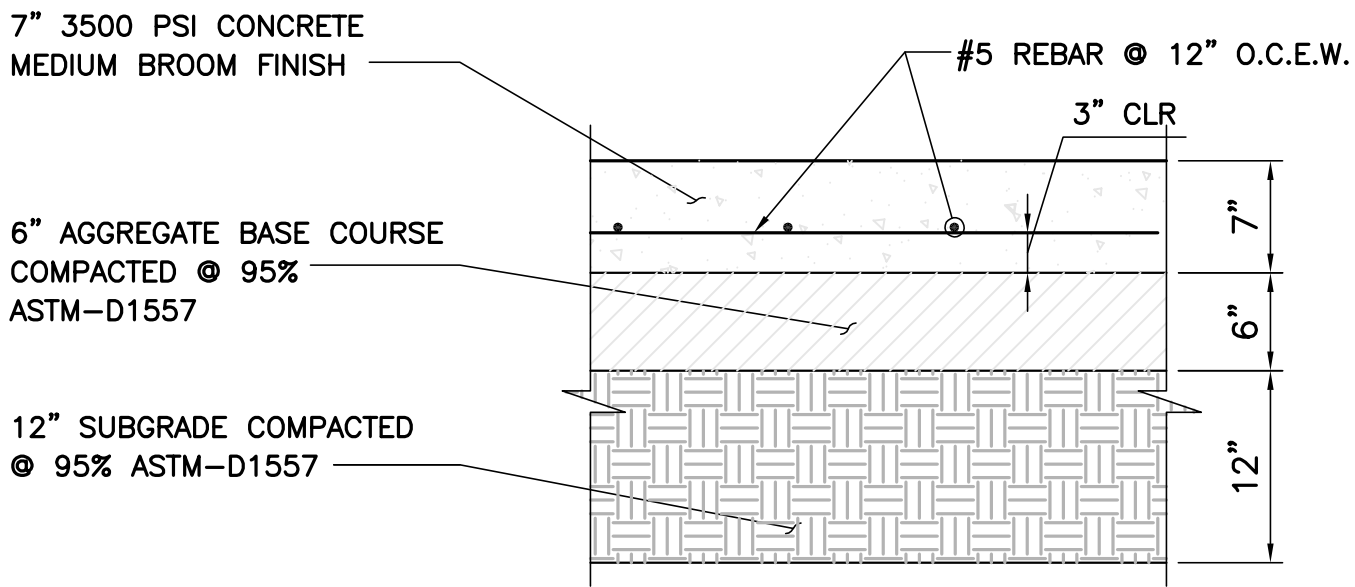
**A1**

- 

- # C101

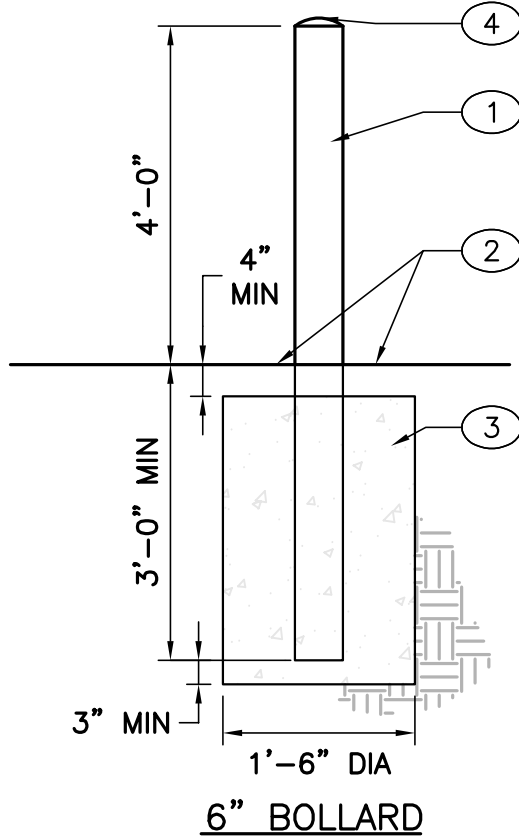


E  
D  
C  
B  
A



E1 CONCRETE PAVEMENT

SCALE: NOT TO SCALE  
Note: Construct contraction joints at 16' max and expansion joints at 32' max spacing

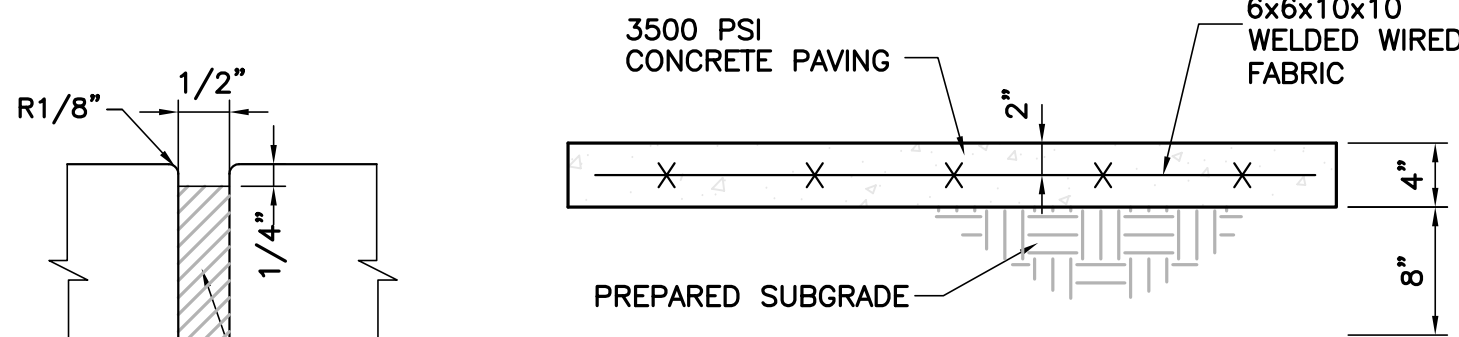


KEYED NOTES: ○

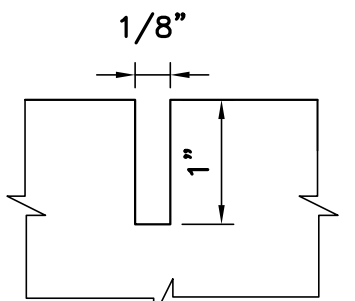
- 1. 6" dia. steel pipe w/ reflectorized red point (conc. filled w/ smooth edges).
- 2. Finished grade or paving as per drawings & specs - see plans.
- 3. Concrete footing.
- 4. Rounded concrete.

C1 CONCRETE BOLLARD, 6"

SCALE: 1/2" = 1'-0"



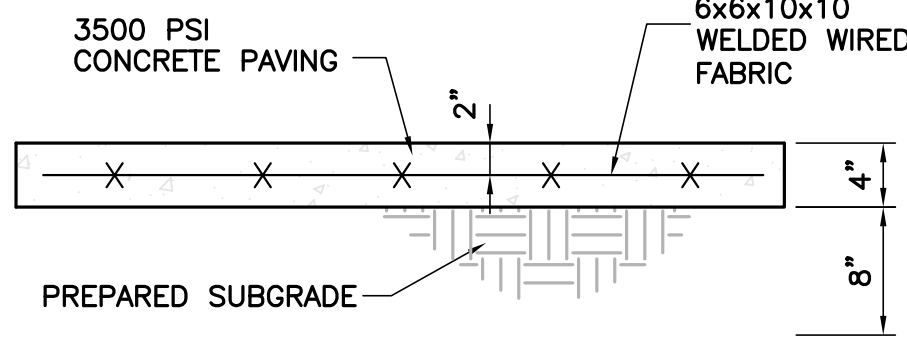
EXPANSION JOINT



CONTRACTION JOINT

A1 TYP SIDEWALK JOINT DETAILS

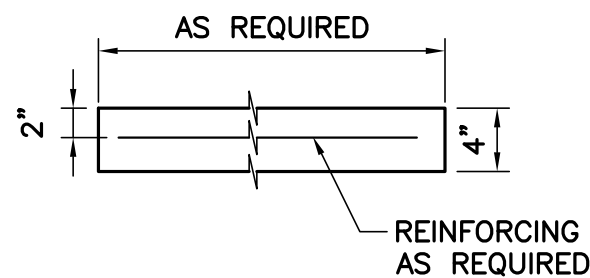
SCALE: NOT TO SCALE



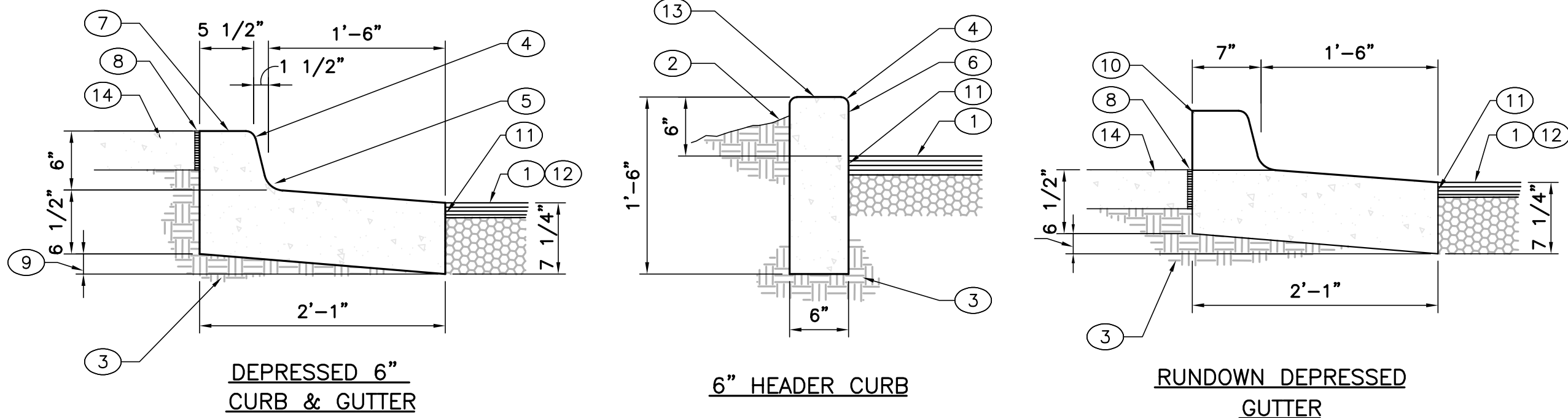
NOTE:

Provide transverse contraction joints at intervals not exceeding 6'-0" on center. provide centerline contraction joints in sidewalks wider than 8'-0". spacing of centerline contraction joints shall not exceed 6'-0".

Provide expansion joints at intervals not exceeding 24'-0" on center.



SECTION



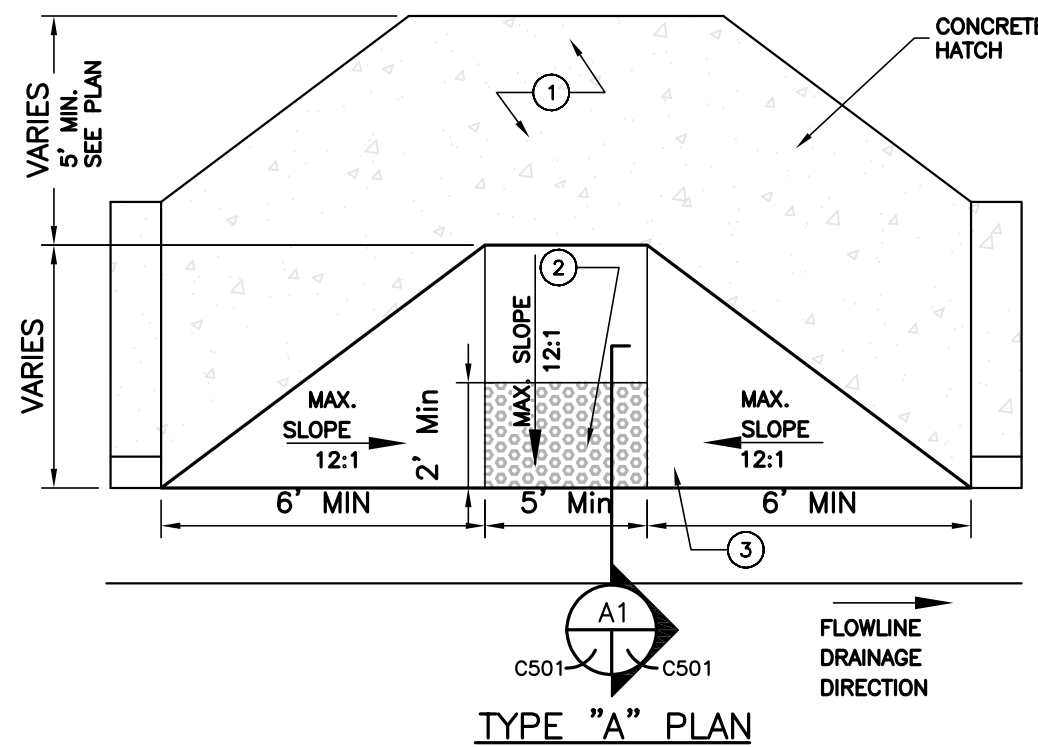
CURB & GUTTER CONSTRUCTION NOTES:

- A. Curbs, gutters & cut-off walls to be constructed of 3500 psi P.C.C. unless otherwise noted.
- B. Edges not specifically dimensioned shall be edged with a 3/8" edging tool.
- C. Remove & replace 12" wide strip of pavement beyond lip of gutter when constructing curb & gutter adjacent to existing a.c. pavement.
- D. Dimensions at rounded corners measured to intersection of straight lines.
- E. For 6" curb & gutter provide control jts. @ 6' o.c. max, also provide 1/2" expansion jts. at 30' o.c. max, at curb returns, & at each side of driveways.
- F. For all other curbing provide control joints @ 10' o.c., provide expansion joints @ 50' o.c. & adjacent to buildings and walls.

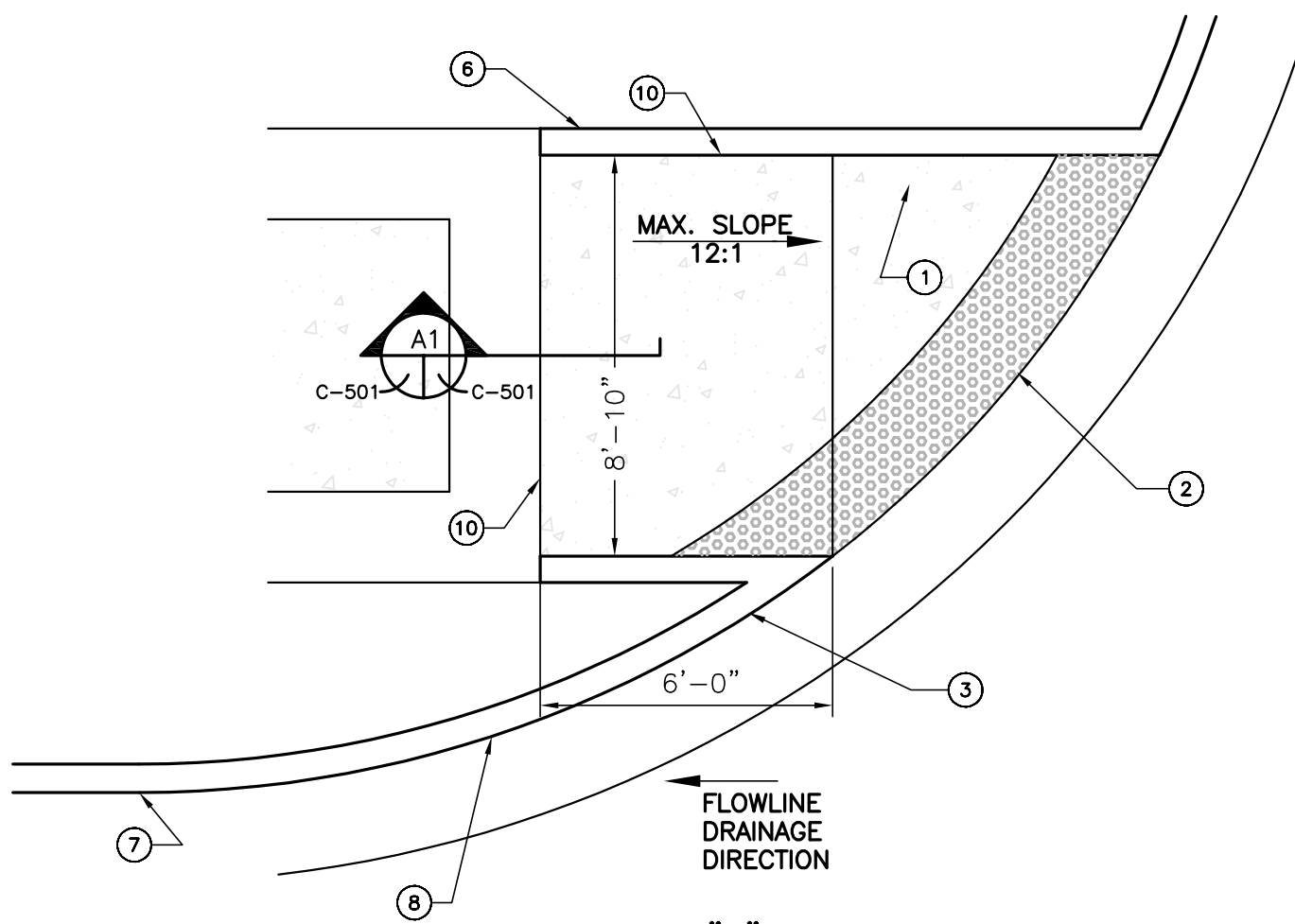
D3

CURB AND GUTTER DETAILS

SCALE: 1" = 1'-0"



TYPE "A" PLAN



TYPE "C" PLAN

KEYED NOTES: #

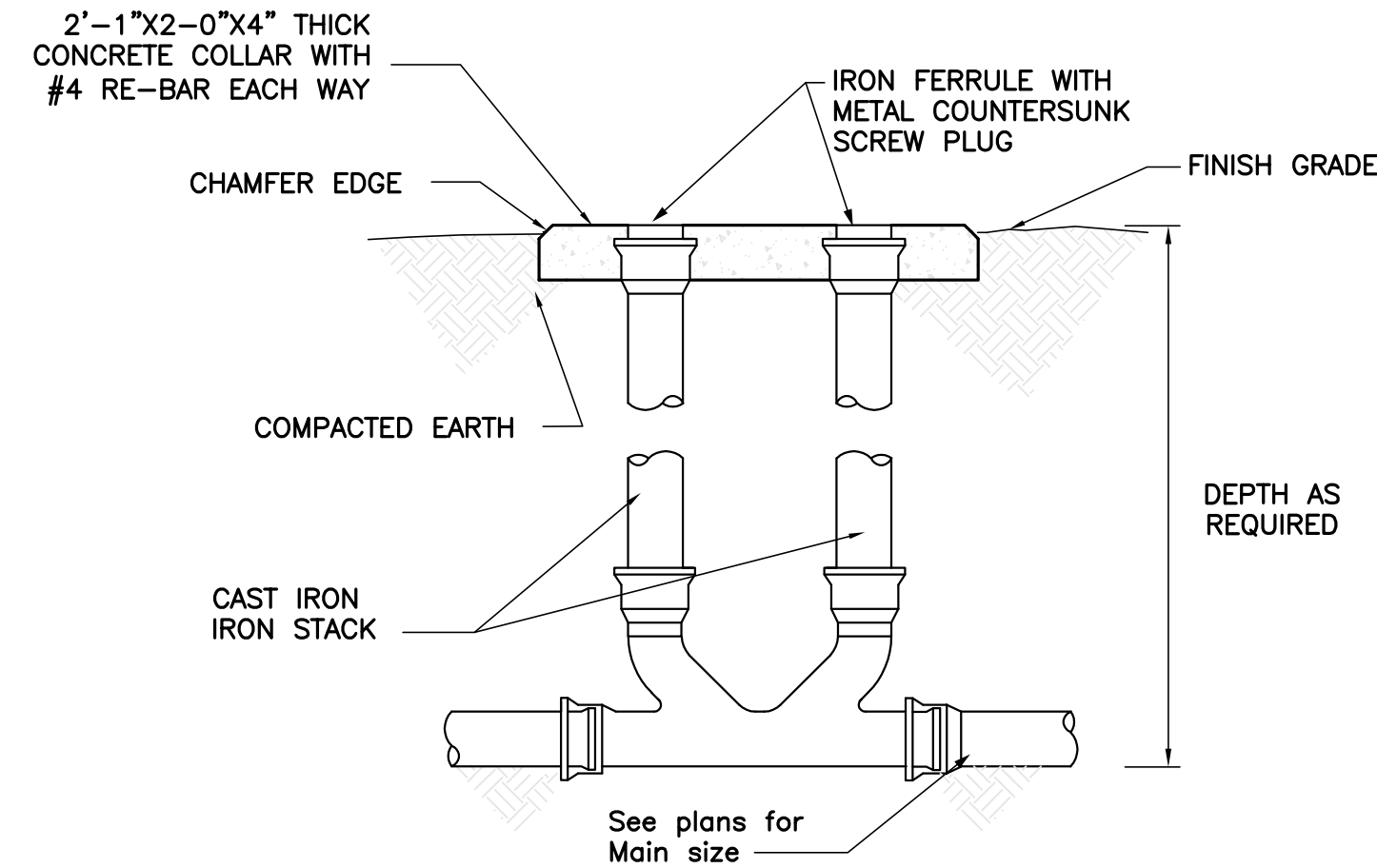
- 1. 2% cross slope made in any direction.
- 2. Truncated cones
- 3. Conc. curb, see plans
- 4. DELETED
- 5. DELETED
- 6. Std. conc. header curb as required
- 7. Point of curve
- 8. Slope curb @ 12:1
- 9. DELETED
- 10. 1/2" Expansion material.

A3 TYP CURB RAMP DETAIL

SCALE: NOT TO SCALE

KEYED NOTES: ○

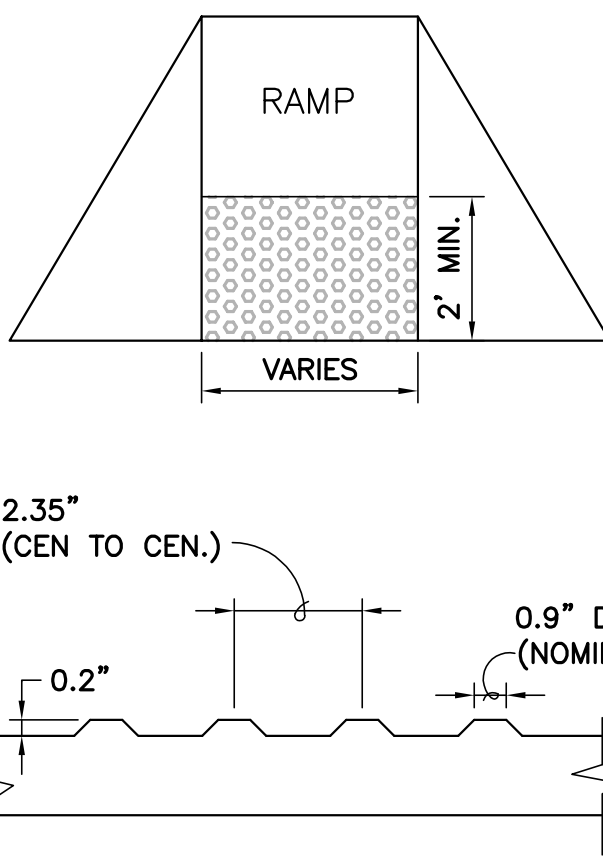
- 1. Pavement section per drawings and specs.
- 2. Finished grade.
- 3. Prepared subgrade.
- 4. 3/4" radius.
- 5. 1 1/2" radius.
- 6. 2" radius (both sides).
- 7. Concrete curb.
- 8. Expansion joint.
- 9. Varies, depress as needed.
- 10. Omit 6" curb.
- 11. Tack coat.
- 12. New or existing paving.
- 13. Smooth rubbed finish.
- 14. Concrete sidewalk.



C4

SAS DOUBLE CLEANOUT

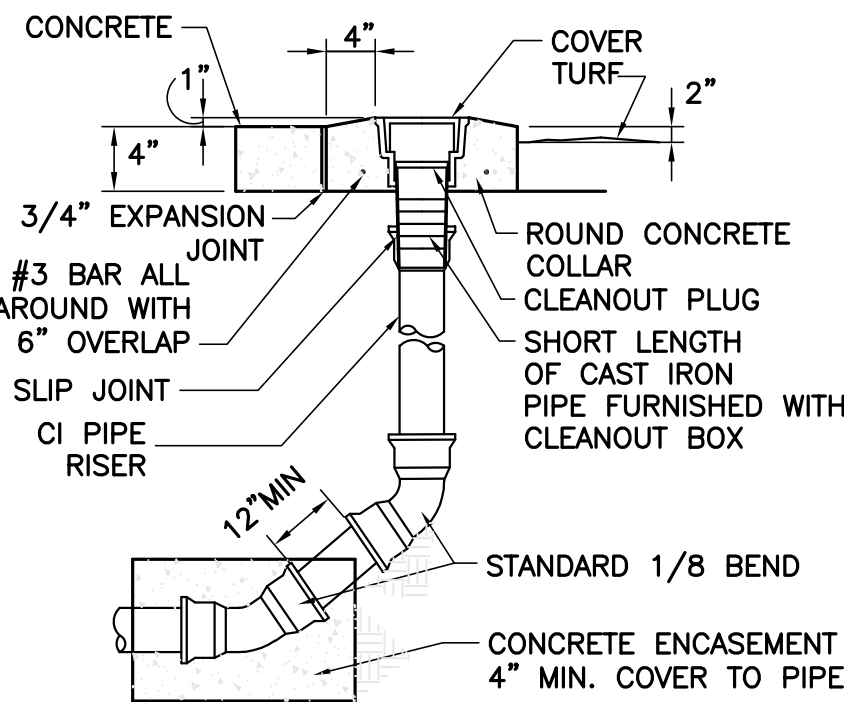
SCALE: NOT TO SCALE



A4

DETECTABLE WARNING SURFACE

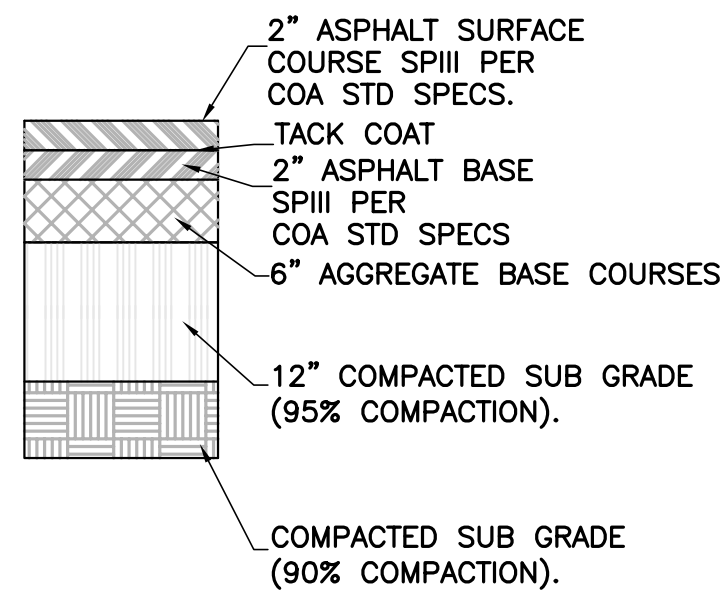
SCALE: NOT TO SCALE



D4

SAS TERMINAL CLEANOUT

SCALE: NOT TO SCALE



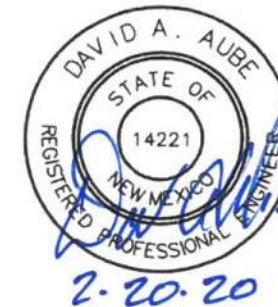
A5

ASHPALT PAVEMENT SECTION

SCALE: NOT TO SCALE

dg  
THE HARTMAN + MAJEWSKI  
**DESIGN GROUP**  
Architects • Engineers • Interior Design  
Planners • Urban Designers • LEED®  
120 Vassar Drive SE Suite 100  
Albuquerque New Mexico 87106  
T 505 242 6880 • F 505 242 6881  
CONSULTANT

STAMP



PROJECT NAME

GGP - Coronado Center  
FOGO DE CHAO

Coronado Center  
6600 Menaul Boulevard NE  
Albuquerque, NM 87110

REVISIONS:		
No.	DATE	DESCRIPTION
Copyright: Design Group		
Drawn by		JRGP
Checked by		BMA
Date		02.12.20
Project number		2571
Cad file name		

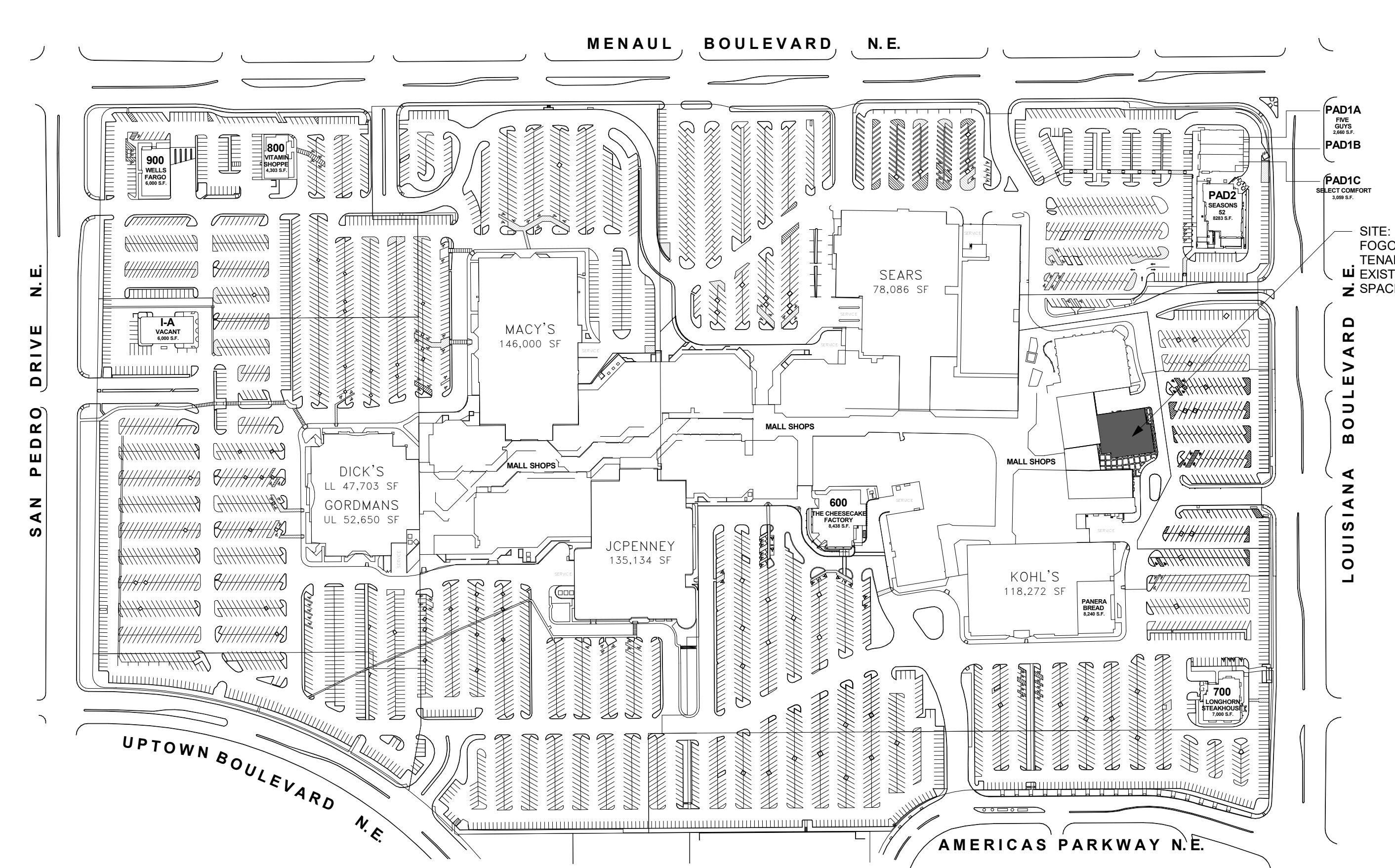
SHEET TITLE:

CIVIL  
DETAIL  
SHEET

SHEET NUMBER:

C501





**PARKING CALCULATIONS**  
PER INTERURBAN DEVELOPMENT ORDINANCE  
PART 14-16-5 TABLE 5-5.1

GROSS BUILDING AREA - SITE PLAN	
GROSS CONDITIONED BUILDING AREA	8366 SF
PATIO AREA	1288 SF
TOTAL GROSS AREA	9654 SF

TOTAL REQUIRED PARKING SPACES	49
TOTAL REQUIRED ACCESSIBLE PARKING SPACES	3
TOTAL REQUIRED ACCESSIBLE VAN SPACES	1
TOTAL REQUIRED BICYCLE SPACES	5
TOTAL REQUIRED MOTORCYCLE SPACES	2

\*\*\*\*\*EXISTING SHARED PARKING TO REMAIN\*\*\*\*\*

EXISTING PARKING AND ALL CRITERIA, INCLUDING ACCESSIBILITY, BICYCLE & MOTORCYCLE PARKING ARE TO BE EXISTING AND MAINTAINED BY LANDLORD IN ACCORDANCE WITH LOCAL REQUIREMENTS

TOTAL AVAILABLE PARKING SPACES	273
TOTAL AVAILABLE ACCESSIBLE PARKING SPACES	8
TOTAL AVAILABLE ACCESSIBLE VAN SPACES	5
TOTAL AVAILABLE BICYCLE SPACES	PER LANDLORD
TOTAL AVAILABLE MOTORCYCLE SPACES	PER LANDLORD

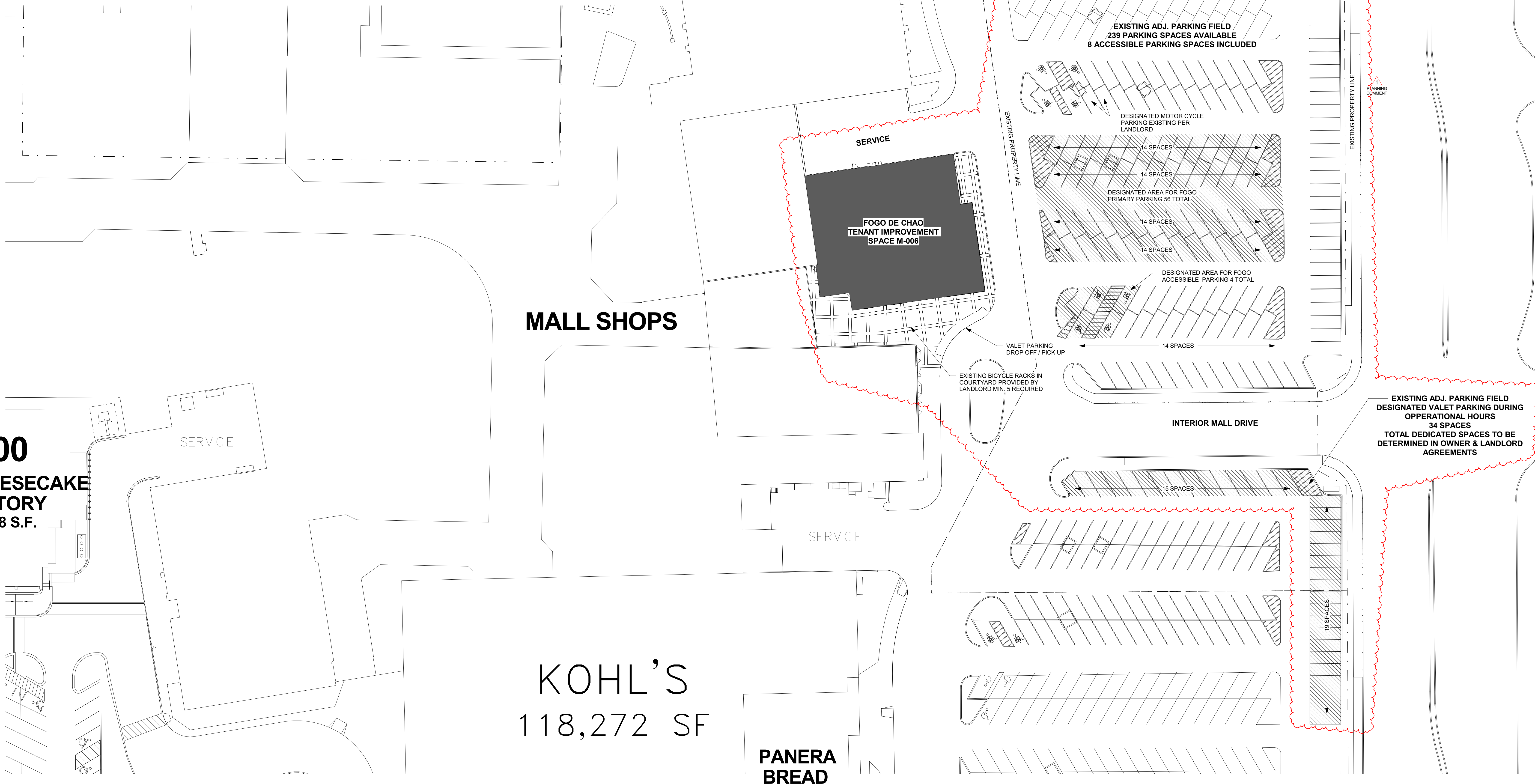
**Coronado Parking Analysis**

GLA Data	Existing GLA	Demo / Decommission	Proposed GLA	Total GLA
DEVELOPER AFFILIATE ANCHOR	77,645			77,645
JCPENNEY	135,134			135,134
MACY'S	146,000			146,000
KOHL'S	118,272			118,272
GORDMANS	52,650			52,650
DICKS SPORTING GOODS	47,703			47,703
Outparcels	33,251			33,251
Developer Mall Stores & Storage	467,343			467,343
Grand Total	1,077,998			1,077,998

Parking Data	
Existing Parking	5,377
Existing Parking Ratio	4.99
Stall (+ Surplus / - Deficit) @ 4.50 Ratio (REA)	526

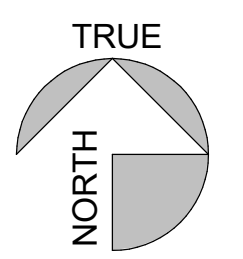
1 PLANNING COMMENT

2 SITE KEY PLAN  
1" = 200'-0"



1 PLANNING DEPARTMENT SITE PLAN  
1" = 30'-0"

LOUISIANA BOULEVARD N.E.



Design Consultant:

**ARCHITECTURE**  
**INNOVATION & DESIGN**  
**in ARCHITECTURE, Inc.**  
28 The Promenade North  
Long Beach, CA 90802  
www.idexperience.com

Architect:

**GEOFFREY B. LIM**  
AIA, NCARB, LEED AP

Plans, maps, specifications, studies, and reports not containing a seal imprint accompanied by an original signature by the licensed professional may have been fraudulently altered and shall not be considered an original copy. All information shall be designed and used solely by the professional whose signature appears below.  
Copyright Protected © 2020

Engineering Consultant:

Stamp:

STATE OF NEW MEXICO  
GEOFFREY B. LIM  
NO. 30698  
Professional Engineer

Project Owner:

**FOGO DE CHÃO**  
BRAZILIAN STEAKHOUSE

5908 HEADQUARTERS DRIVE  
SUITE K200  
PLANO, TX 75024

Tenant Improvement

Project Address:  
**FOGO - ALBUQUERQUE, NM**  
CORONADO CENTER, 6600 MENAUL BLVD.  
SPACE M006  
ALBUQUERQUE, NM 87110

Issue For:  
PERMIT

Issue Date:  
02/21/2020

Revisions:

NO.	REASON	DATE
1	PLANNING COMMENTS	06/30/20

Principal in Charge:  
JOSH COOL

Project Manager:  
WESLEY STEPHENS

Drawn By:  
WESLEY STEPHENS

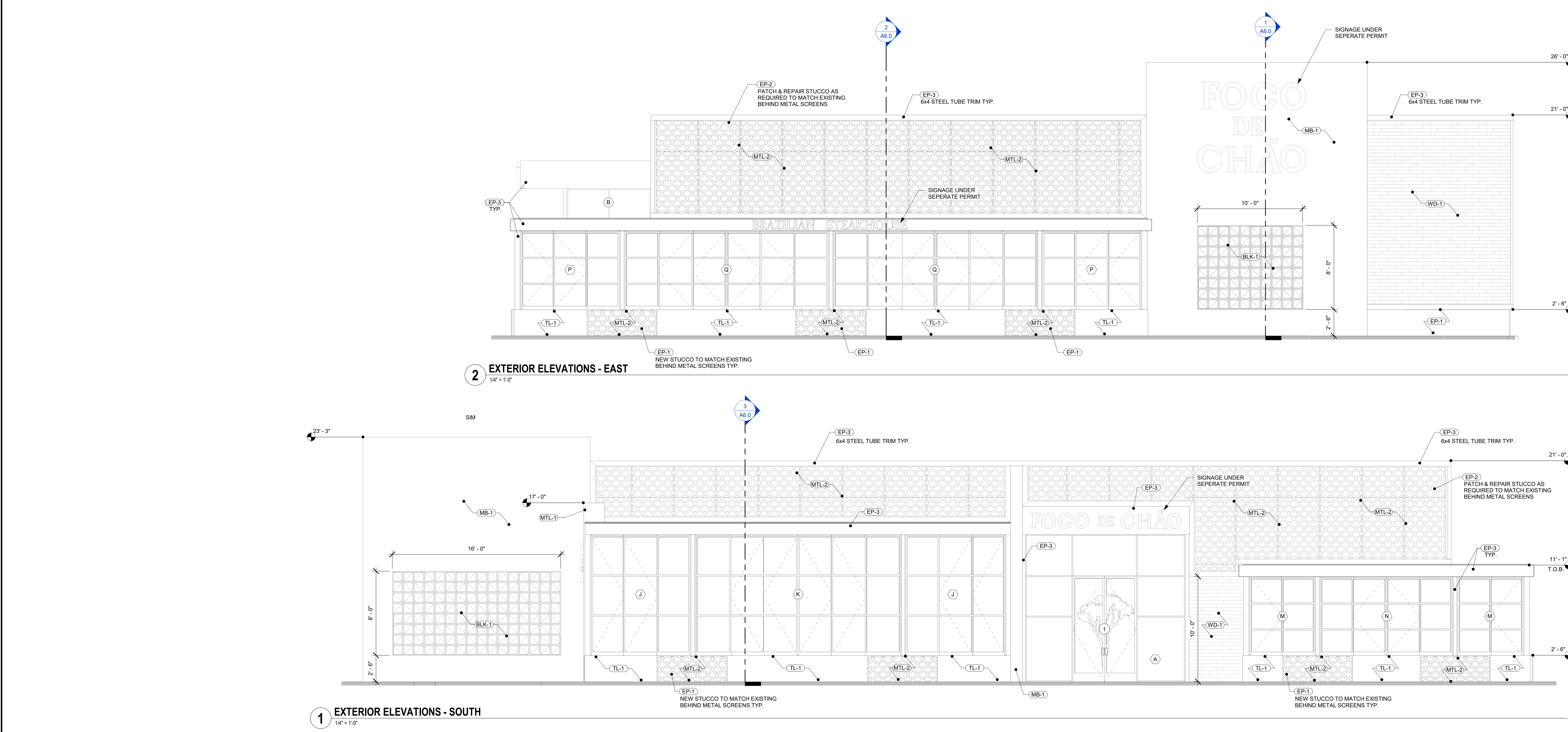
Project Number:  
140-012-19

Sheet Title:  
SITE PLAN

Sheet Number:  
PD-1



MATERIALS SCHEDULE Exterior								
MARK	DESCRIPTION	MANUFACTURER	MANUFACTURER CONTACT	MODEL / PRODUCT DESIGNATION	PRODUCT URL	FLAME SPREAD CLASSIFICATION	ESTIMATED LEAD TIMES	PRODUCT COMMENTS
'EXTERIOR'								
BLK-1	EXTERIOR BREEZE BLOCK	TESSELLE	951.781.3000	INCLINE LILY WHITE 11.4" / GROUT: STANDARD MASONRY WITH MORTAR	https://tesselle.com/collections/screen-blocks-decorative-breeze-blocks/products/incline-lily-white-11-4-breeze-block	NON COMBUSTABLE		
EP-1	DARK GREY WALL PAINT	DUNN EDWARDS	888.DEPAINT	DET680 ESPRESSO MACCHIATO / MATTE FINISH / EXTERIOR GRADE	www.dunnedwards.com/colors/browser/det680	CLASS A		
EP-2	GOLD SOFFIT PAINT	WOLF GORDON	800.347.0550	SOLID METAL SM10251 SCUFFMASTER COLLECTION	http://www.wolfgordon.com/products/paint/solid-metal-sm10251.html#colorway	CLASS A		
EP-3	PAINT TO MATCH MTL-1 DARK BRONZE	DUNN EDWARDS	888.DEPAINT	TO MATCH MTL-1 / EXTERIOR GRADE	www.dunnedwards.com	CLASS A		
MB-1	EXTERIOR MARBLE TILE	EUROWEST	EDMOND ORDUBEGIAN / 818.383.0999 / EDMOND@EUROWEST.COM	ULTRA MARMI / CALACATTA MACCHIA VEVVHIA / 6mm (1/4")	www.eurowest.com/porcelain-tile/ultra-marmi-ariosteal-calacatta-macchia-vevvhia/	NON COMBUSTABLE		ALL EXTERIOR METAL TRIM & COLUMNS
MTL-1	SHEET METAL PANELS	WESTERN STATES DECKING OR EQ	602.495.0048	24 ga FLAT SHEET / COIL METAL PANELS / DARK BRONZE	www.metaldeck.com/metal-flat-sheets.html	NON COMBUSTABLE		
MTL-2	PAINT TO MATCH MTL-1 DARK BRONZE	GTM ARTISAN METAL	215.322.4970	LASER CUT METAL SCREENS / CUSTOM PATTERN	www.gtmartisanmetal.com	NON COMBUSTABLE		COORDINATE w/ OWNER & SIGNAGE FABRICATOR
SF-1	PORTELLA INTERIOR & EXTERIOR STOREFRONT SYSTEMS	PORTELLA	512.265.7861	STOREFRONT INTERIOR & EXTERIOR SERIES	www.portella.com	NON COMBUSTABLE		ALL INTERIOR & EXTERIOR STOREFRONTS PER DOOR & WINDOW SCHEDULE
TL-1	LARGE FORMAT WALL TILE	COSENTINO / DECKTON	877.532.6394	NATURAL COLLECTION / KELYA / 6mm (1/4")	https://www.cosentino.com/	NON COMBUSTABLE		
WD-1	EXTERIOR WOOD PLANKING	ARTISTRY HARDWOOD FLOORING	FRANK JOHNSON / F.Johnson@CatalinaHome.com	WINDSOR COLLECTION / SMOKED OAK	http://artistryflooring.com	CLASS B		USED AS WALL PLANKING GC TO ENSURE RECOMMENDED BACKING FOR NAILING APPLICATION
WD-2	EXTERIOR WOOD PLANKING - PRE CUT CHEVRON PATTERN	ARTISTRY HARDWOOD FLOORING	FRANK JOHNSON / F.Johnson@CatalinaHome.com	WINDSOR COLLECTION / SMOKED OAK w/ EXTERIOR UV SEALER	http://artistryflooring.com	CLASS B		USED AS WALL PLANKING GC TO ENSURE RECOMMENDED BACKING FOR NAILING APPLICATION



Design Consultant:  
  
ARCHITECTURE  
INNOVATION & DESIGN  
ARCHITECTURE, Inc.  
28 The Promenade North  
Long Beach, CA 90802  
www.idexperience.com

Architect:  
GEOFFREY B. LIM  
AIA, NCARB, LEED AP  
Plans, maps, specifications, studies, and reports not containing a seal imprint accompanied by an original signature by the licensed professional may have been fraudulently altered and shall not be considered an original copy. All information shall be designed and verified by the professional whose signature appears below.  
Copyright Protected © 2020

Engineering Consultant:  
  
Project Owner:  
FOGO DE CHÃO  
BRAZILIAN STEAKHOUSE  
5908 HEADQUARTERS DRIVE  
SUITE K200  
PLANO, TX 75024

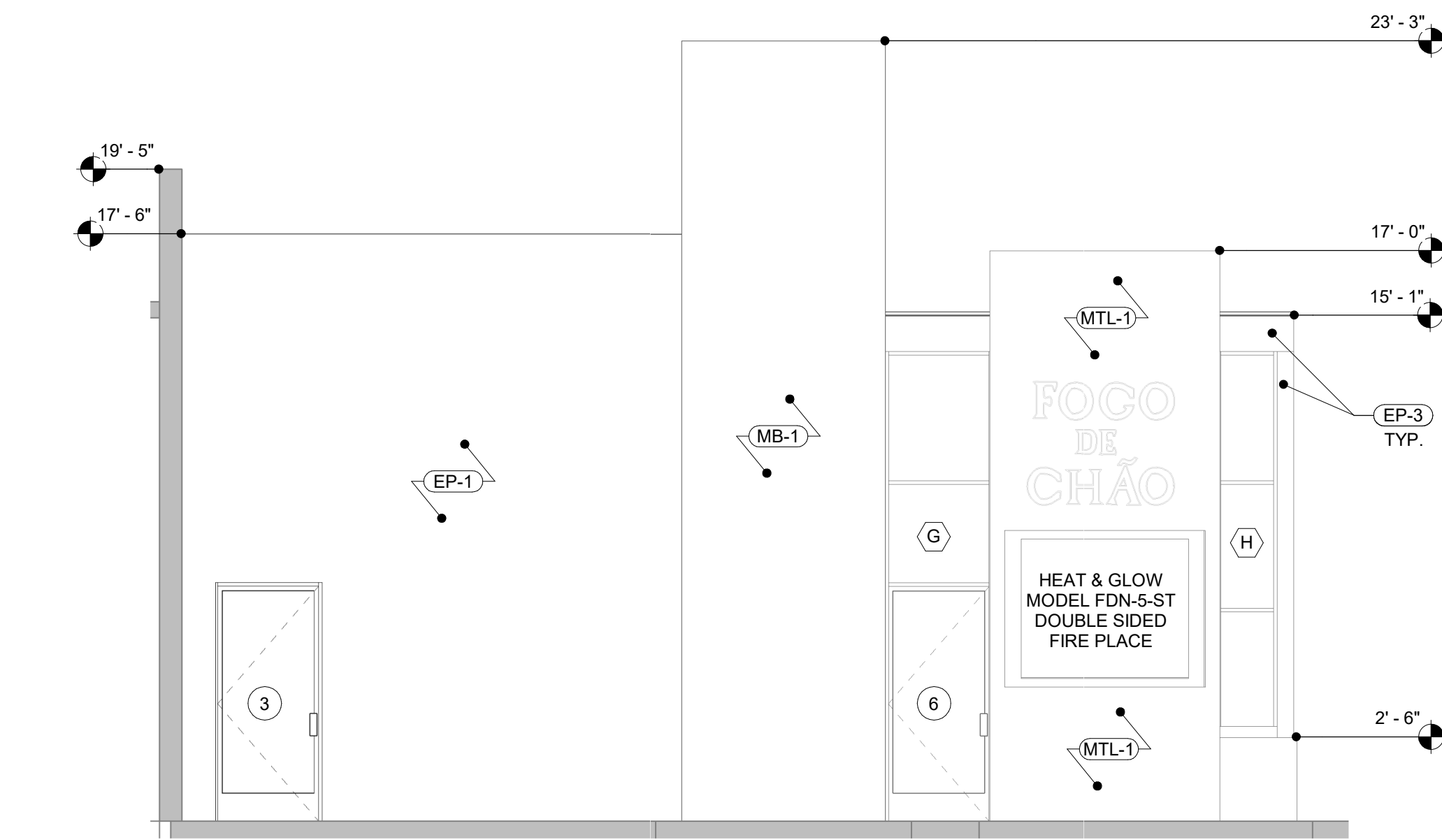
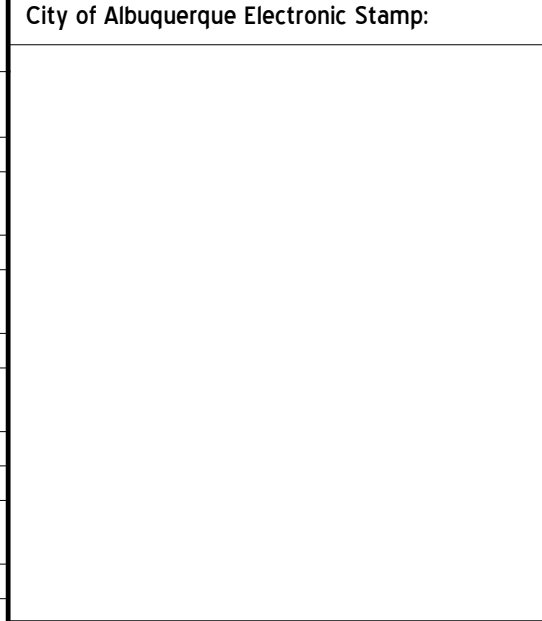
TENANT IMPROVEMENT  
Project Address:  
FOGO - ALBUQUERQUE, NM  
CORONADO CENTER 6600 MENAUL BLVD.  
SPACE M006  
ALBUQUERQUE, NM 87110

Issue For:  
PERMIT  
Issue Date:  
02/21/2020  
Revisions:  
NO. REASON DATE

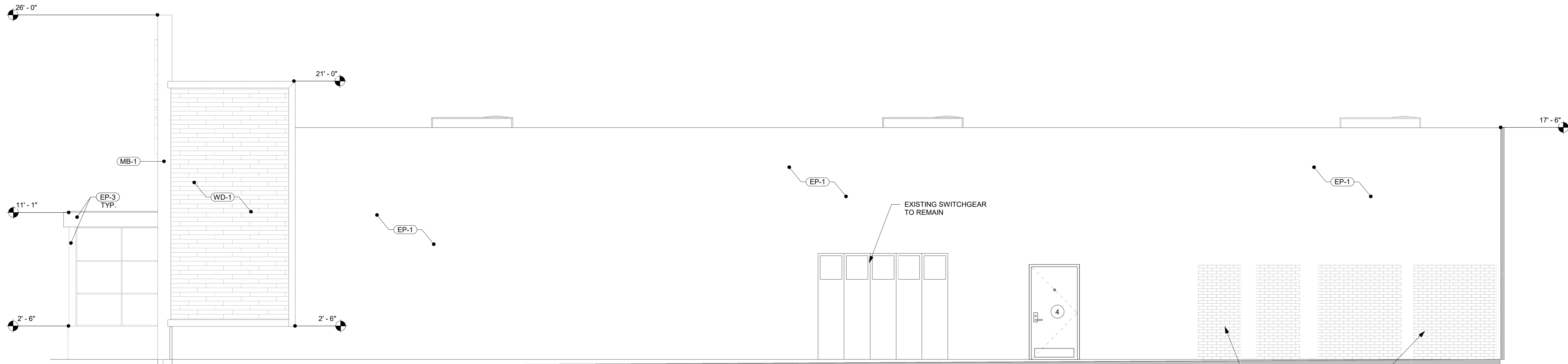
Principal in Charge:  
JOSH COOL  
Project Manager:  
WESLEY STEPHENS  
Drawn By:  
WESLEY STEPHENS  
Project Number:  
140-012-19  
Sheet Title:  
EXTERIOR ELEVATIONS & MATERIALS  
Sheet Number:  
PD-2



MATERIALS SCHEDULE Exterior								
MARK	DESCRIPTION	MANUFACTURER	MANUFACTURER CONTACT	MODEL / PRODUCT DESIGNATION	PRODUCT URL	FLAME SPREAD CLASSIFICATION	ESTIMATED LEAD TIMES	PRODUCT COMMENTS
EXTERIOR* BLK-1	EXTERIOR BREEZE BLOCK	TESSELLE	951.781.3000	INCLINE LILY WHITE 11.4" / GROUT: STANDARD MASONRY WITH MORTAR	https://tesselle.com/collections/screen-blocks-decorative-breeze-blocks/products/incline-lily-white-11-4-breeze-block	NON COMBUSTABLE		
EP-1	DARK GREY WALL PAINT	DUNN EDWARDS	888.DEPANT	DET680 ESPRESSO MACCHIATO / MATTE FINISH / EXTERIOR GRADE	www.dunnedwards.com/colors/browns/det680	CLASS A		
EP-2	GOLD SOFIT PAINT	WOLF GORDON	800.347.0550	SOLID METAL SM10251 SCUFFMASTER COLLECTION	http://www.wolfgordon.com/products/paint/solid-metal-sm10251.html#colorway	CLASS A		
EP-3	PAINT TO MATCH MTL-1 DARK BRONZE	DUNN EDWARDS	888.DEPANT	TO MATCH MTL-1 / EXTERIOR GRADE	www.dunnedwards.com	CLASS A		ALL EXTERIOR METAL TRIM & COLUMNS
MB-1	EXTERIOR MARBLE TILE	EUROWEST	EDMOND ORDUBEGIAN / 818.383.0999 / EDMOND@EUROWEST.COM	ULTRA MARMI / CALACATTA MACCHIA VEVVHIA / 6mm (1/4")	www.eurowest.com/porcelain-tile/ultra-marmi-ariosteal-calacatta-macchia-vevvhia/	NON COMBUSTABLE		
MTL-1	SHEET METAL PANELS	WESTERN STATES DECKING OR EQ	602.495.0048	24 ga FLAT SHEET / COIL METAL PANELS / DARK BRONZE	www.metaldeck.com/metal-flat-sheets.html	NON COMBUSTABLE		
MTL-2	PAINT TO MATCH MTL-1 DARK BRONZE	GTM ARTISAN METAL	215.322.4970	LASER CUT METAL SCREENS / CUSTOM PATTERN	www.gtmartisanmetal.com	NON COMBUSTABLE		COORDINATE w/ OWNER & SIGNAGE FABRICATOR
SF-1	PORTELLA INTERIOR & EXTERIOR STOREFRONT SYSTEMS	PORTELLA	512.265.7861	STOREFRONT INTERIOR & EXTERIOR SERIES	www.portella.com	NON COMBUSTABLE		ALL INTERIOR & EXTERIOR STOREFRONTS PER DOOR & WINDOW SCHEDULE
TL-1	LARGE FORMAT WALL TILE	COSENTINO / DECKTON	877.532.6394	NATURAL COLLECTION / KELYA / 6mm (1/4")	https://www.cosentino.com/	NON COMBUSTABLE		
WD-1	EXTERIOR WOOD PLANKING	ARTISTRY HARDWOOD FLOORING	FRANK JOHNSON / FJohnson@CatalinaHome.com	WINDSOR COLLECTION / SMOKED OAK	http://artistryflooring.com	CLASS B		USED AS WALL PLANKING GC TO ENSURE RECOMMENDED BACKING FOR NAILING APPLICATION
WD-2	EXTERIOR WOOD PLANKING - PRE CUT CHEVRON PATTERN	ARTISTRY HARDWOOD FLOORING	FRANK JOHNSON / FJohnson@CatalinaHome.com	WINDSOR COLLECTION / SMOKED OAK w/ EXTERIOR UV SEALER	http://artistryflooring.com	CLASS B		USED AS WALL PLANKING GC TO ENSURE RECOMMENDED BACKING FOR NAILING APPLICATION



2 EXTERIOR ELEVATION - WEST  
1/4" = 1'-0"



1 EXTERIOR ELEVATIONS - NORTH  
1/4" = 1'-0"

Design Consultant:

**ARCHITECTURE**

**INNOVATION & DESIGN**

**ARCHITECTURE, Inc.**

28 The Promenade North  
Long Beach, CA 90802  
www.idexperience.com

Architect:

**GEOFFREY B. LIM**  
**AIA, NCARB, LEED AP**

Plans, maps, specifications, studies, and reports not containing a seal imprint accompanied by an original signature by the licensed professional may have been fraudulently altered and shall not be considered an original copy. All information should be designed and verified by the professional whose signature appears below.

Copyright Protected © 2020

Engineering Consultant:

Stamp:

STATE OF NEW MEXICO

GEOFFREY B. LIM  
NO. 10058

*Geoffrey B. Lim*  
LEED AP ARCHITECT

Project Owner:

**FOGO DE CHÃO**  
BRAZILIAN STEAKHOUSE

5908 HEADQUARTERS DRIVE  
SUITE K200  
PLANO, TX 75024

TENANT IMPROVEMENT

Project Address:  
**FOGO - ALBUQUERQUE, NM**  
CORONADO CENTER, 6600 MENAUL BLVD.,  
SPACE M006  
ALBUQUERQUE, NM 87110

Issue For:  
PERMIT

Issue Date:  
02/21/2020

Revisions:

NO.	REASON	DATE
-----	--------	------

Principal in Charge:  
JOSH COOL

Project Manager:  
WESLEY STEPHENS

Drawn By:  
WESLEY STEPHENS

Project Number:  
140-012-19

Sheet Title:  
EXTERIOR ELEVATIONS & MATERIALS

Sheet Number:  
PD-3



