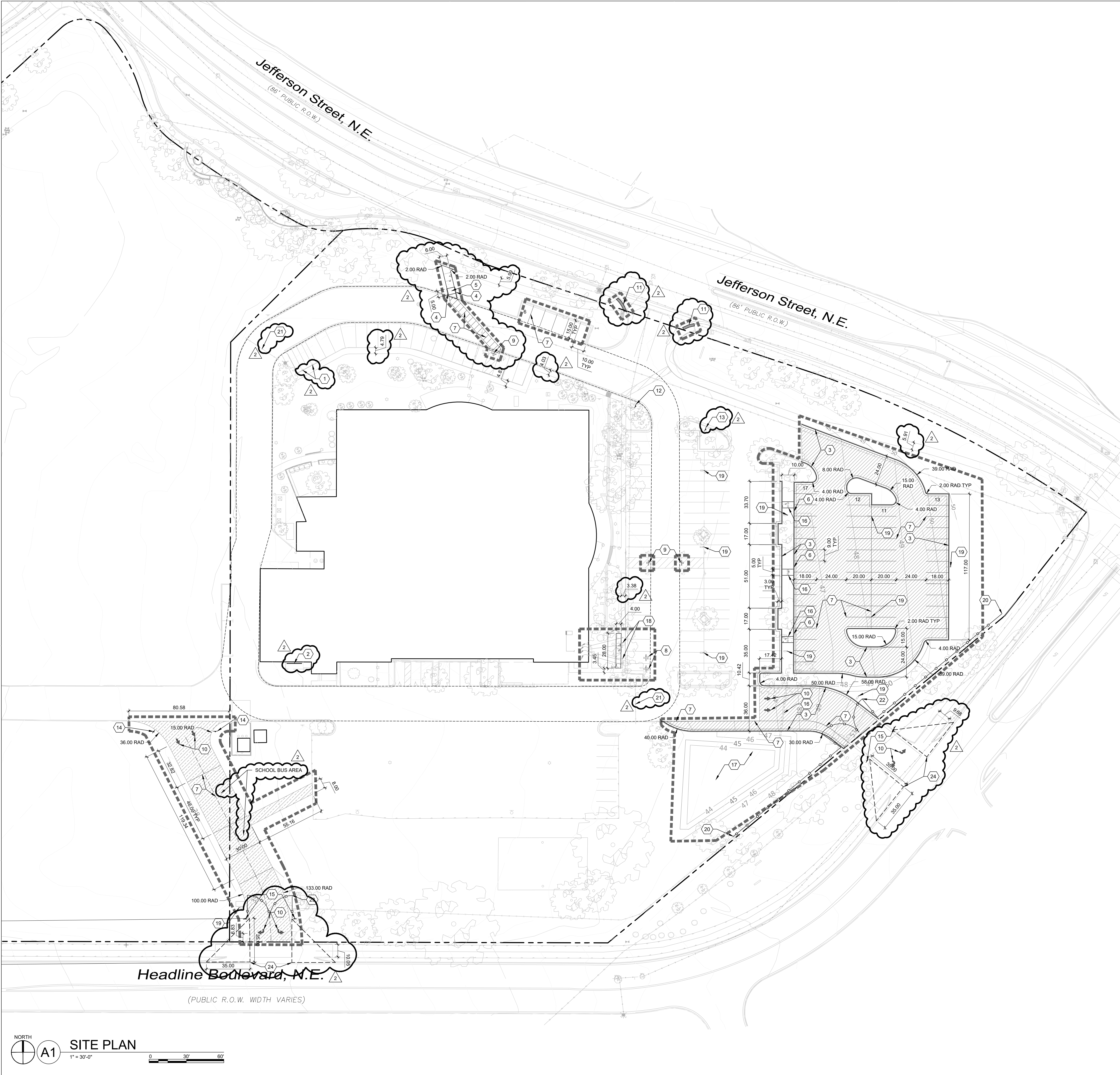


ADMINISTRATIVE AMENDMENT

FILE # _____ PROJECT # _____

APPROVED BY

DATE



GENERAL SHEET NOTES

1. CONTRACTOR TO COORDINATE WITH OWNER FOR ALLOWABLE STAGING AREAS DURING CONSTRUCTION.
2. CONTRACTOR SHALL MAINTAIN REQUIRED EXITS FROM EXISTING OCCUPIED BUILDINGS THROUGHOUT COURSE OF CONSTRUCTION, AND CONTRACTOR IS RESPONSIBLE FOR COORDINATING ALL WORK WITH THE ACCESS NEEDS OF THE SCHOOL ADMINISTRATION.
3. CONTRACTOR IS TO VERIFY EXISTING UTILITY LOCATIONS BEFORE EXCAVATION.
4. UTILITIES AND ASSOCIATED EQUIPMENT SHOWN FOR REFERENCE ONLY. CONTRACTOR TO COORDINATE LOCATION AND INSTALLATION. SEE CIVIL AND ELECTRICAL DRAWINGS.
5. SEE ELECTRICAL SHEETS FOR SITE ELECTRICAL DEMOLITION PLANS.
6. EXISTING LANDSCAPE AREAS ADJACENT TO THE PROJECT SITE ARE TO BE PROTECTED DURING DEMOLITION AND CONSTRUCTION.

PARKING CALCULATIONS

EXISTING PARKING = 153 SPACES
EXISTING MOTORCYCLE PARKING TO REMAIN = 4 SPACES
EXISTING BICYCLE PARKING TO REMAIN = 14 SPACES
EXISTING ADA PARKING TO REMAIN = 8 SPACES
PARKING REMOVED = 44 SPACES
ADDITIONAL PARKING = 52 SPACES
TOTAL PARKING = 168 SPACES
NET GAIN PARKING = 15 SPACES (8.9% CHANGE)

REQUIRED PARKING = 126 SPACES (PER GOVERNING SITE PLAN 1/16/13)
REQUIRED ADA PARKING = 8 SPACES (PER GOVERNING SITE PLAN 1/16/13)
REQUIRED MOTORCYCLES PARKING = 4 SPACES (PER GOVERNING SITE PLAN 1/16/13)
REQUIRED BICYCLE PARKING = 14 SPACES (PER GOVERNING SITE PLAN 1/16/13)

TRAFFIC CIRCULATION

PROPOSED MORNING STUDENT DROP-OFF CIRCULATION:
Parents dropping off students and students parking their cars for the day all enter the property off of Tiburon St to the west. This **one-way traffic flow** turns north at the southwest corner of the building, follows the road along the north side of the building, then turns south and students disembark vehicles along the east side of the building. Students parking vehicles for the day exit drop-off traffic at the northeast corner of the building and continue eastwards to park in the eastern additional parking. After dropping-off students, drop-off traffic continues south to the southeast corner of the building, turns east, and then exits the site from the additional roadway onto Headline Blvd.

PROPOSED AFTERNOON STUDENT PICK-UP CIRCULATION:
Parents picking up students enter the property off of Tiburon St to the west. This **one-way traffic flow** turns north at the southwest corner of the building, follows the road along the north side of the building, then turns south and students are picked up along the east side of the building. Students departing in their own vehicles join the pick-up traffic at the northeast corner of the building. All vehicles continue south to the southeast corner of the building, turn east, and then exit the site from the additional roadway onto Headline Blvd.

BUS CIRCULATION:
School buses enter the site with drop-off and pick-up traffic from Tiburon St to the west. Before reaching the southwest corner of the building, the buses turn south onto the additional asphalt bus lanes and queue to either drop-off or pick-up students. Buses then exit the site southwards onto Headline Blvd.

During pick-up or drop-off times, no traffic enters or exits the site via the existing entry on Jefferson St, which is temporarily closed by the school with traffic cones. The overall traffic circulation is directed by a school employee during these times. All other school traffic is coordinated to not coincide with pick-up and drop-off times.

SHEET KEYED NOTES

CODE	DESCRIPTION
1	EXISTING MOTORCYCLE PARKING TO REMAIN
2	EXISTING BICYCLE RACK TO REMAIN
3	CONCRETE CURB AND GUTTER. SEE SHEET G110
4	CONCRETE HEADER CURB. SEE B3/AS501
5	ACCESSIBLE CONCRETE RAMP. SEE A4/AS501
6	CURB CUT. SEE A2/AS501 AND CIVIL FOR LOCATIONS
7	PAINTED PAVEMENT MARKINGS, 4" WIDE, COLOR: WHITE
8	E.V. CHARGING ONLY - PAVEMENT MARKING, COLOR: WHITE, COORDINATE LOCATION WITH INSTALLATION OF CHARGERS
9	NO PARKING - PAVEMENT MARKING, COLOR: WHITE, LETTER 1'-0" HIGH AND 2" WIDE
10	DIRECTIONAL PAVEMENT ARROW. SEE C1/AS501
11	DETECTABLE WARNING SURFACE. SEE C3/AS501
12	STUDENT DROP-OFF AND PICK-UP SIGN. SEE C2/AS501
13	STUDENT PARKING SIGN. SEE D2/AS501
14	SCHOOL BUSES ONLY SIGN. SEE C2/AS501
15	DO NOT ENTER SIGN. SEE D2/AS501
16	DRAINAGE STRUCTURE. SEE CIVIL
17	PONDING AREA. SEE CIVIL
18	ELECTRIC VEHICLE CHARGER. SEE ELECTRICAL
19	LIGHT POLE WITH FOUNDATION. SEE B1/AS501 AND ELECTRICAL
20	METAL ORNAMENTAL FENCE TO MATCH EXISTING, NOT IN CONTRACT
21	INSTALL KNOX BOX AT EXISTING GATE
22	36"-0" ORNAMENTAL VEHICULAR GATE WITH KNOX BOX, NOT IN CONTRACT
23	36"-0" VEHICULAR PIPE GATE WITH KNOX BOX, NOT IN CONTRACT
24	45' CLEAR SIGHT TRIANGLE

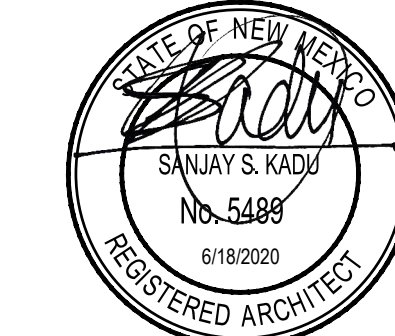
LEGEND

	ASPHALT PAVING, SEE CIVIL
	LIGHT ASPHALT PAVING, SEE CIVIL
	CONCRETE WALK, SEE A1/AS501
	PROPERTY LINE
	LIMIT OF WORK, COORDINATE WITH CIVIL
	EXISTING FIRE LANE WITH CURB STRIPING

DEKKER
PERICH
SABATINI

ARCHITECTURE
DESIGN
INSPIRATION

ARCHITECT



ENGINEER

PROJECT

COTTONWOOD CLASSICAL PREPARATORY SCHOOL
PARKING EXPANSION
7801 JEFFERSON ST NE
ALBUQUERQUE, NM 87109

100%
CONSTRUCTION
DRAWINGS

REVISIONS

5/1/2020	ASH-001
6/3/2020	ASH-002

DRAWN BY BG

REVIEWED BY SK, MB

DATE 13 APR 2020

PROJECT NO. 19-0093

DRAWING NAME

SITE PLAN

SHEET NO.

AS101
OF