

**ADMINISTRATIVE AMENDMENT**

**FILE # \_\_\_\_\_ PROJECT # \_\_\_\_\_**

\_\_\_\_\_

\_\_\_\_\_

\_\_\_\_\_

**APPROVED BY**

**DATE**

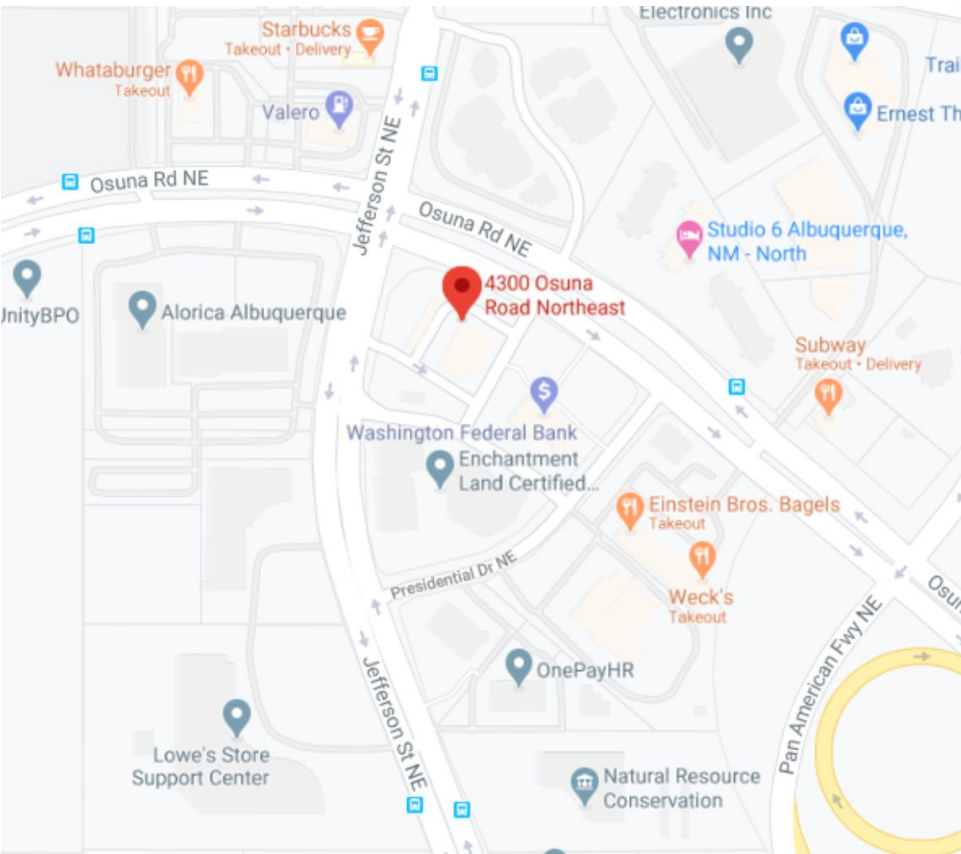


McDonald's


4300 OSUNA NE - ALBUQUERQUE, NM 87109

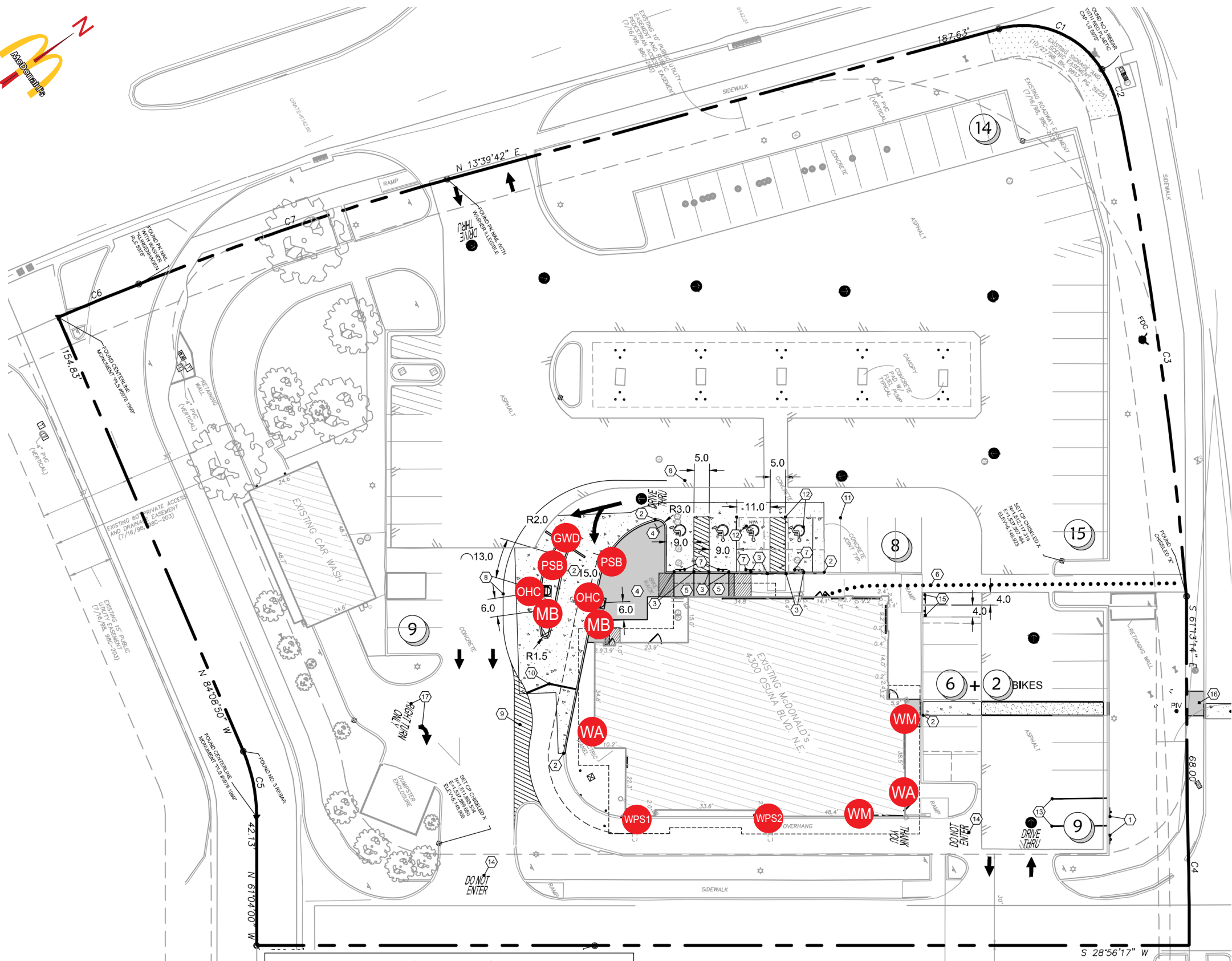
NSN: 20105

SIGN PROGRAM BOOK



VICINITY MAP  
NTS

Customer: MCDONALD'S	Date: 05/06/20	Prepared By: KH	Eng: -	<div>Note: Color output may not be exact when viewing or printing this drawing. All colors used are PMS or the closest CMYK equivalent. If these colors are incorrect, please provide the correct PMS match and a revision to this drawing will be made.</div>	<div> SIGNS   LIGHTING   IMAGE</div> <div>DISTRIBUTED BY SIGN UP COMPANY 700 21st Street Southwest PO Box 210 Watertown, SD 57201-0210 1.800.843.9888 • www.personasigns.com</div>
Location: ALBUQUERQUE, NM	File Name: 154421 - 4300 OSUNA NE - ALBUQUERQUE, NM				



PSB ..... PRE-SELL BOARD (QTY 2)

GWD ..... DOUBLE ARM GATEWAY

OHC ..... ORDER HERE CANOPY (QTY 2)

MB ..... MENU BOARD (QTY 2)

WPS1 ..... WINDOW POSITION SIGN 1

WPS2 ..... WINDOW POSITION SIGN 2

WA ..... WALL ARCH (QTY 2)

WM ..... 24" WORDMARK (QTY 2)

APPROVAL BOX - PLEASE INITIAL

CUSTOMER APPROVAL	Date

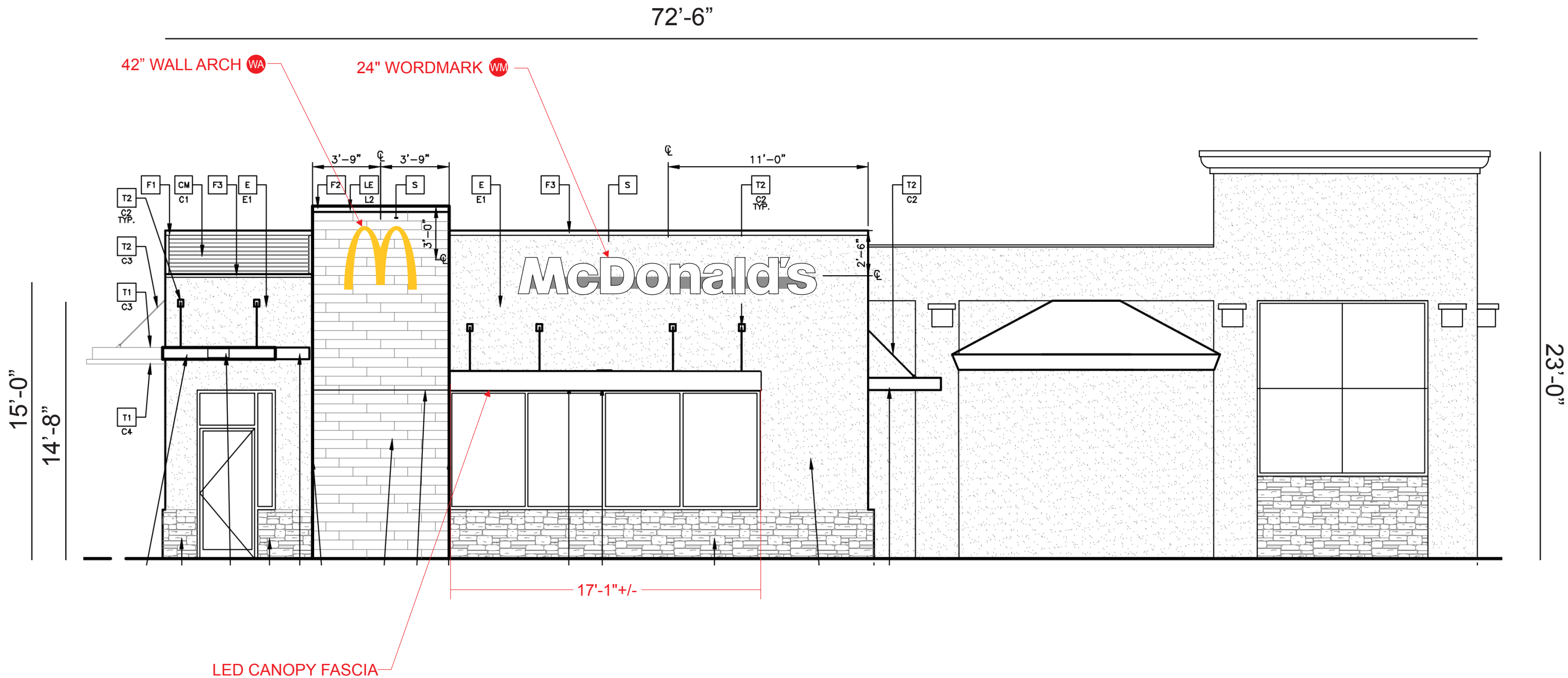
**NOTE:** Elevation drawings are for customer approval only, drawings are not to be used as any installation guide, all dimensions must be verified before installation.

Customer: MCDONALD'S	Date: 05/06/20	Prepared By: KH	Eng: -	Note: Color output may not be exact when viewing or printing this drawing. All colors used are PMS or the closest CMYK equivalent. If these colors are incorrect, please provide the correct PMS match and a revision to this drawing will be made.
Location: ALBUQUERQUE, NM	File Name: 154421 - 4300 OSUNA NE - ALBUQUERQUE, NM			

**persona**  
SIGNS | LIGHTING | IMAGE

DISTRIBUTED BY SIGN UP COMPANY  
700 21st Street Southwest  
PO Box 210  
Watertown, SD 57201-0210  
1.800.843.9888 • www.personasigns.com

NORTHEAST (FRONT) ELEVATION  
SCALE: 3/16" = 1'-0"



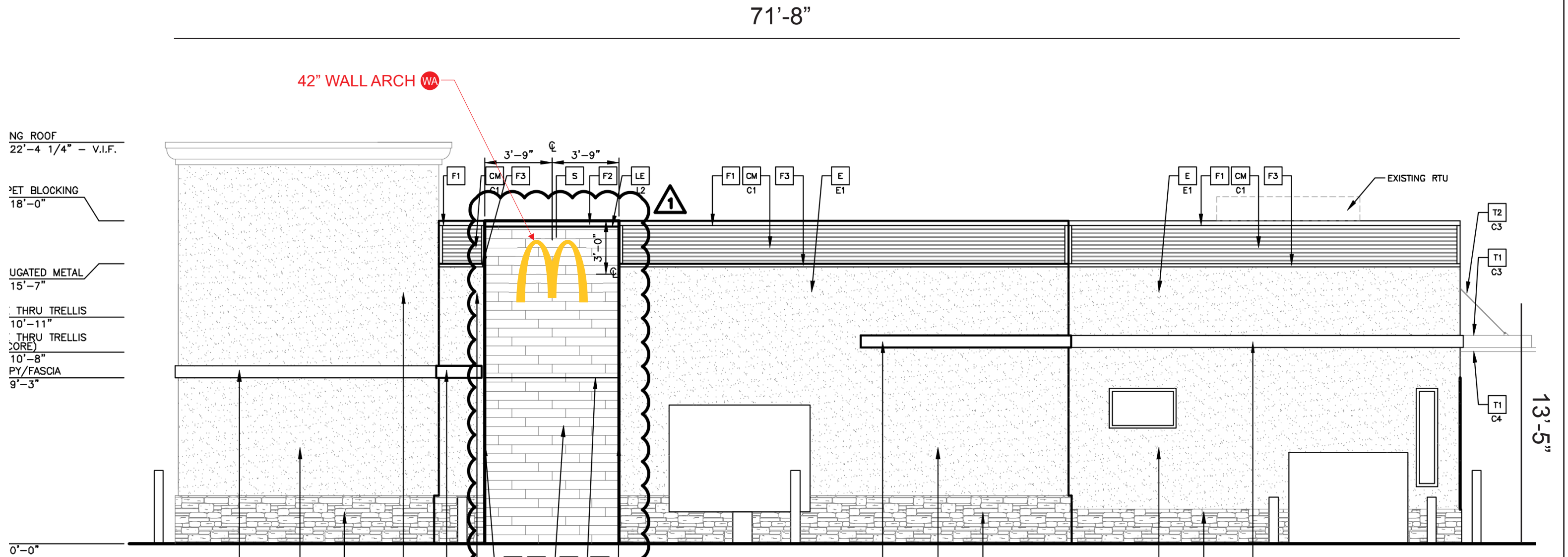
APPROVAL BOX - PLEASE INITIAL		
CUSTOMER APPROVAL		Date

NOTE: Elevation drawings are for customer approval only, drawings are not to be used as any installation guide, all dimensions must be verified before installation.

Customer: MCDONALD'S	Date: 05/06/20	Prepared By: KH	Eng: -	<div>Note: Color output may not be exact when viewing or printing this drawing. All colors used are PMS or the closest CMYK equivalent. If these colors are incorrect, please provide the correct PMS match and a revision to this drawing will be made.</div>	<div>persona</div> <div>SIGNS   LIGHTING   IMAGE</div>	<div>DISTRIBUTED BY SIGN UP COMPANY</div> <div>700 21st Street Southwest</div> <div>PO Box 210</div> <div>Watertown, SD 57201-0210</div> <div>1.800.843.9888 • www.personasigns.com</div>
Location: ALBUQUERQUE, NM	File Name: 154421 - 4300 OSUNA NE - ALBUQUERQUE, NM					



SOUTHWEST (REAR) ELEVATION  
SCALE: 3/16" = 1'-0"



APPROVAL BOX - PLEASE INITIAL

CUSTOMER APPROVAL

Date

**NOTE:** Elevation drawings are for customer approval only, drawings are not to be used as any installation guide, all dimensions must be verified before installation.

Customer:  
MCDONALD'S

Date:  
05/06/20

Prepared By:  
KH

Eng:  
-

Note: Color output may not be exact when viewing or printing this drawing. All colors used are PMS or the closest CMYK equivalent. If these colors are incorrect, please provide the correct PMS match and a revision to this drawing will be made.

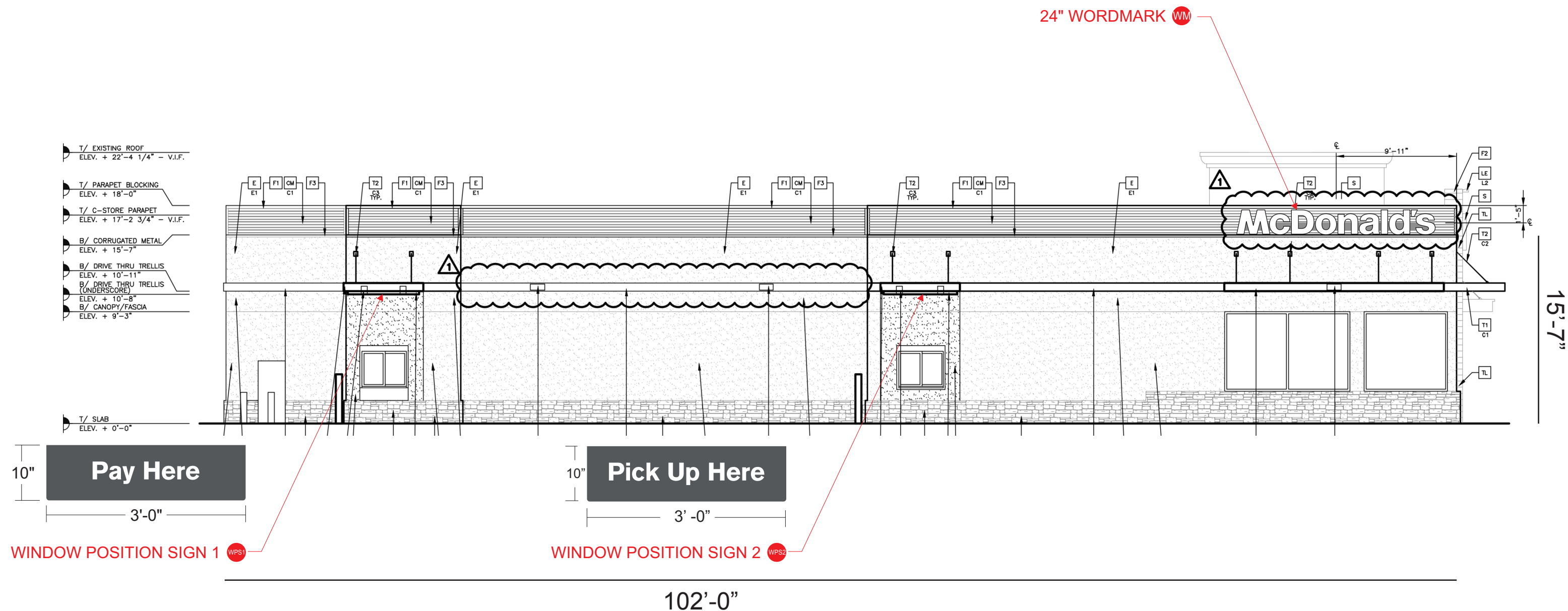
Location:  
ALBUQUERQUE, NM

File Name:  
154421 - 4300 OSUNA NE - ALBUQUERQUE, NM

**persona**  
SIGNS | LIGHTING | IMAGE

DISTRIBUTED BY SIGN UP COMPANY  
700 21st Street Southwest  
PO Box 210  
Watertown, SD 57201-0210  
1.800.843.9888 • www.personasigns.com

SOUTHEAST (DRIVE-THRU) ELEVATION  
SCALE: 1/8" = 1'-0"



APPROVAL BOX - PLEASE INITIAL		
CUSTOMER APPROVAL		Date

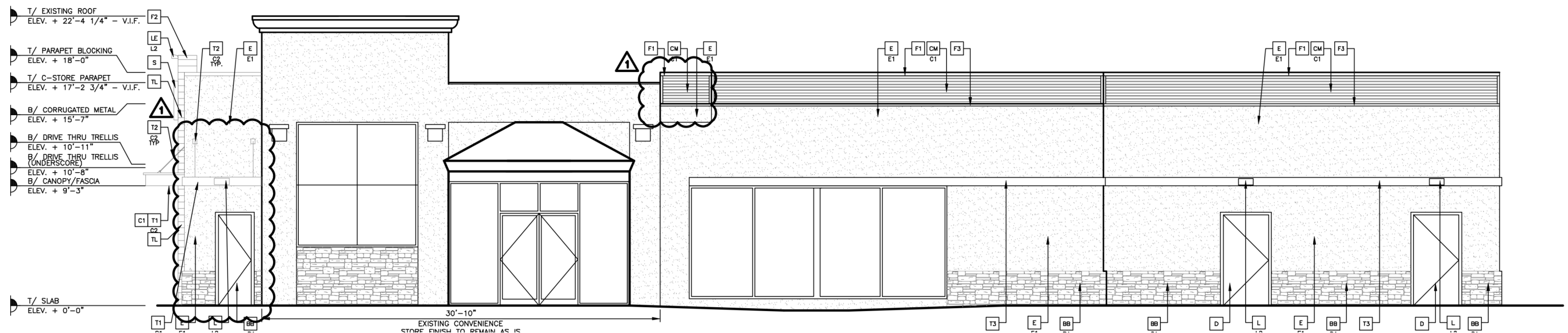
**NOTE:** Elevation drawings are for customer approval only, drawings are not to be used as any installation guide, all dimensions must be verified before installation.

Customer: <b>MCDONALD'S</b>	Date: <b>05/06/20</b>	Prepared By: <b>KH</b>	Eng: <b>-</b>	Note: Color output may not be exact when viewing or printing this drawing. All colors used are PMS or the closest CMYK equivalent. If these colors are incorrect, please provide the correct PMS match and a revision to this drawing will be made.
Location: <b>ALBUQUERQUE, NM</b>	File Name: <b>154421 - 4300 OSUNA NE - ALBUQUERQUE, NM</b>			

**persona**  
SIGNS | LIGHTING | IMAGE

DISTRIBUTED BY SIGN UP COMPANY  
700 21st Street Southwest  
PO Box 210  
Watertown, SD 57201-0210  
1.800.843.9888 • www.personasigns.com

**NORTHWEST (NON DRIVE-THRU) ELEVATION**  
SCALE: 1/8" = 1'-0"



**APPROVAL BOX - PLEASE INITIAL**

CUSTOMER APPROVAL		Date
-------------------	--	------

**NOTE:** Elevation drawings are for customer approval only, drawings are not to be used as any installation guide, all dimensions must be verified before installation.

Customer:  
**MCDONALD'S**

Date:  
05/06/20

Prepared By: <b>KH</b>
---------------------------

Eng:  
-

**Note:** Color output may not be exact when viewing or printing this drawing. All colors used are PMS or the closest CMYK equivalent. If these colors are incorrect, please provide the correct PMS match and a revision to this drawing will be made.

Location:  
**ALBUQUERQUE, NM**

File Name:  
**154421 - 4300 OSUNA NE - ALBUQUERQUE, NM**

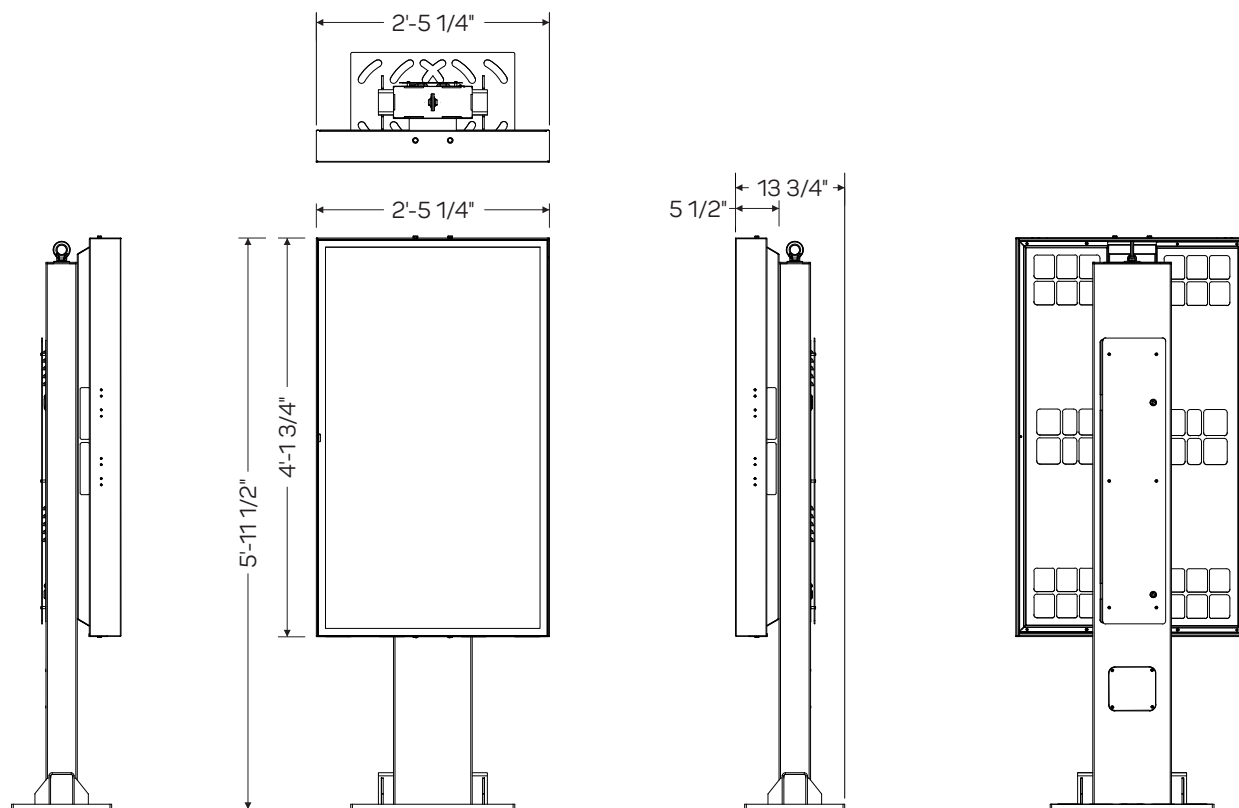
**persóna**  
SIGNS | LIGHTING | IMAGE

DISTRIBUTED BY SIGN UP COMPANY  
700 21st Street Southwest  
PO Box 210  
Watertown, SD 57201-0210  
1.800.843.9888 • [www.personasigns.com](http://www.personasigns.com)

<b>Frame</b>	<b>Hot dip galvanized + anti-graffiti powder coated steel</b>
<b>Brackets</b>	<b>Hot dip galvanized</b>
<b>Panels</b>	<b>Aluminium + anti-graffiti powdercoat</b>
<b>Access fasteners</b>	<b>Security Torx</b>
<b>Media player access</b>	<b>Dual camlock</b>
<b>Eyebolt</b>	<b>Stainless crane on</b>
<b>Baseplate</b>	<b>McDonalds spec triple mounting pattern option</b>

## ODMB 02 SINGLE

<b>Displays</b>	<b>Samsung OH55F</b>
<b>Hardware</b>	<b>Stratacache Spectra NG</b>
<b>Heating/Cooling</b>	<b>Watlow 100W Heater Sunon 120mm AC Fan</b>
<b>Power Supply Units</b>	<b>60W DC Media Player Power Supply</b>
<b>Power Cables</b>	<b>1 x IEC Power Cable</b>
<b>Electrical Components</b>	<b>Isolated Ground 2 x IG Receptacles 20A Circuit Breaker</b>
<b>Communication Cables</b>	<b>2 x HDMI 1 x RS232</b>
<b>Certification</b>	<b>UL Certified</b>



SCALE: 1/2" = 1'-0"



GRAPHIC DETAIL  
NOT TO SCALE

Customer:  
**MCDONALD'S**

Date:  
**05/06/20**

Prepared By:  
**KH**

Note: Color output may not be exact when viewing or printing this drawing. All colors used are PMS or the closest CMYK equivalent. If these colors are incorrect, please provide the correct PMS match and a revision to this drawing will be made.

Location:  
**ALBUQUERQUE, NM**

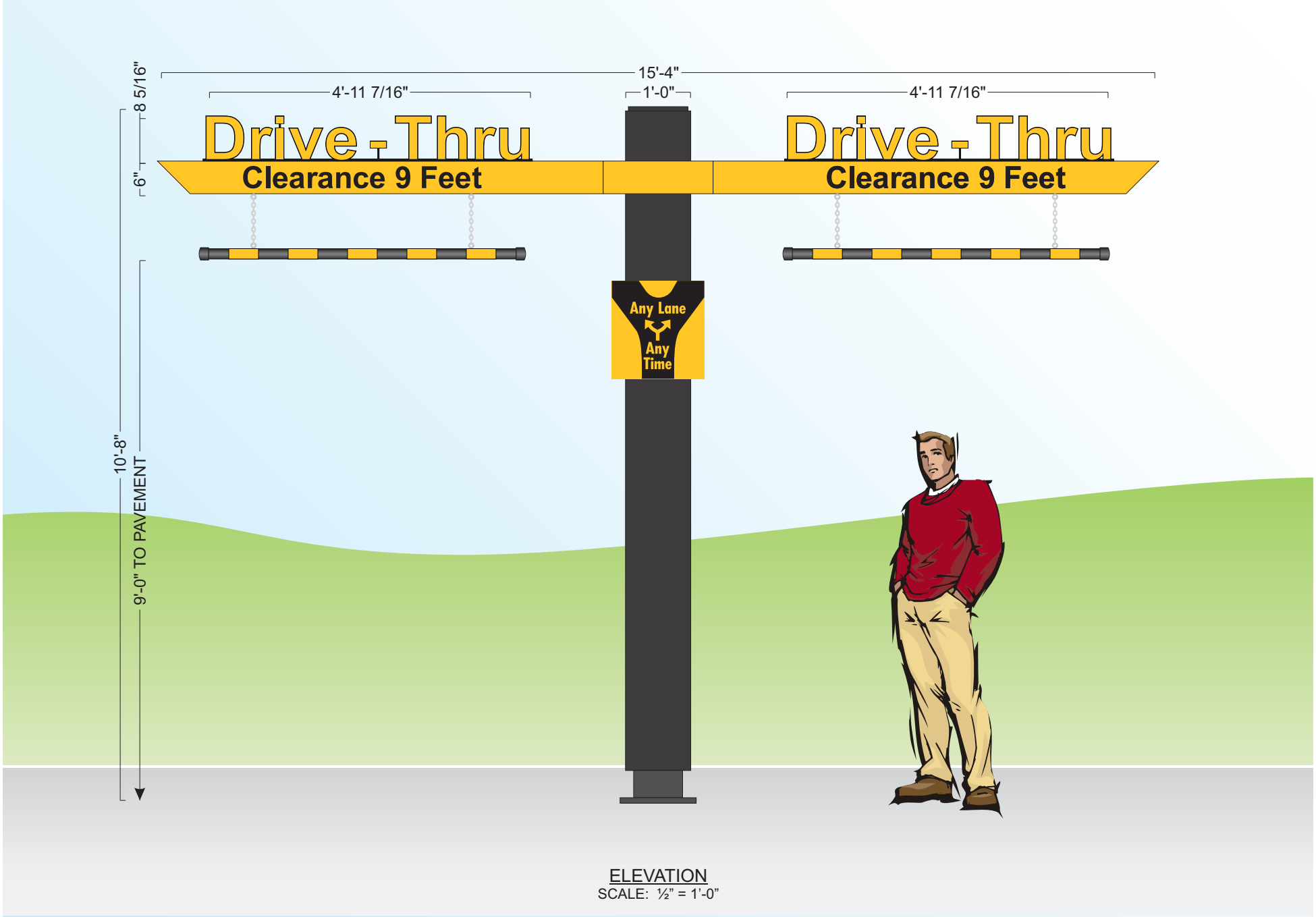
File Name:  
**154421 - 4300 OSUNA NE - ALBUQUERQUE, NM**

Eng:  
-

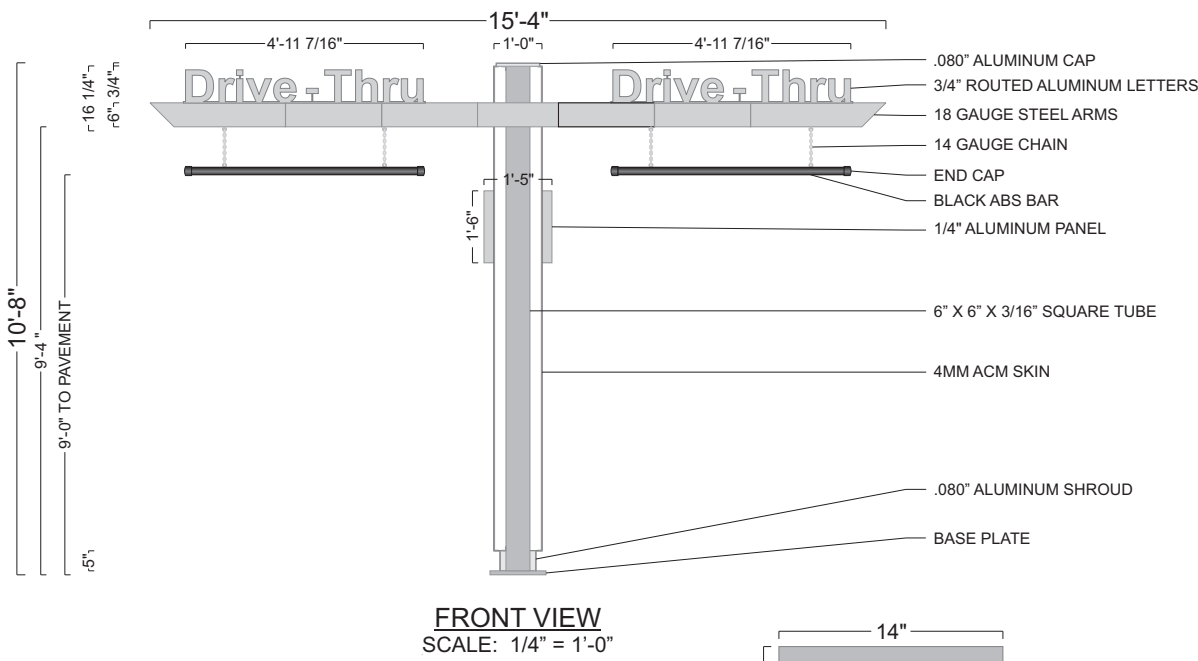
**persona**  
SIGNS | LIGHTING | IMAGE

DISTRIBUTED BY SIGN UP COMPANY  
700 21st Street Southwest  
PO Box 210  
Watertown, SD 57201-0210  
1.800.843.9888 • www.personasigns.com

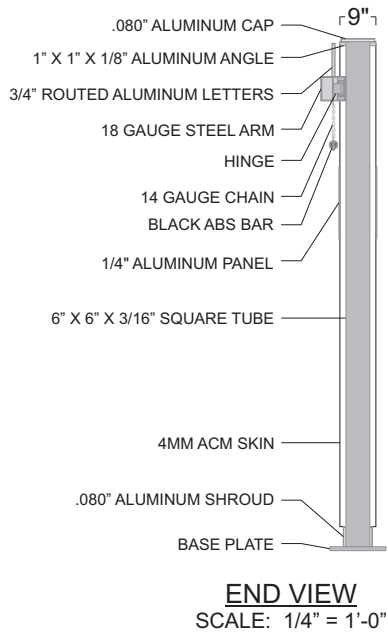




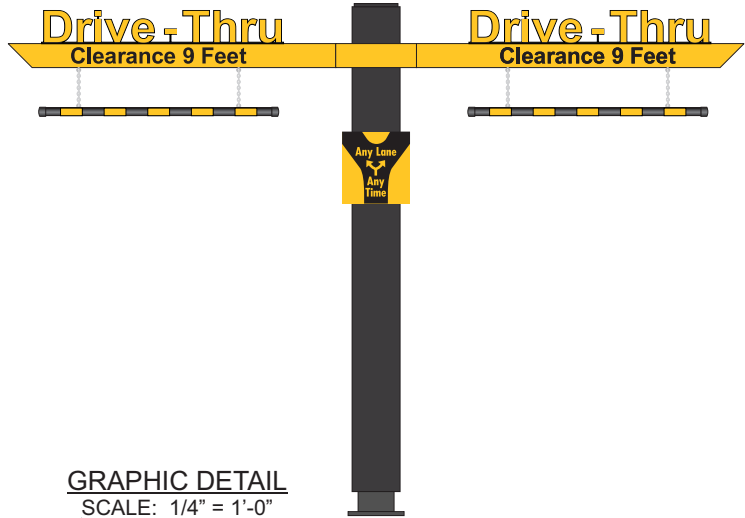
ELEVATION  
SCALE: 1/2" = 1'-0"



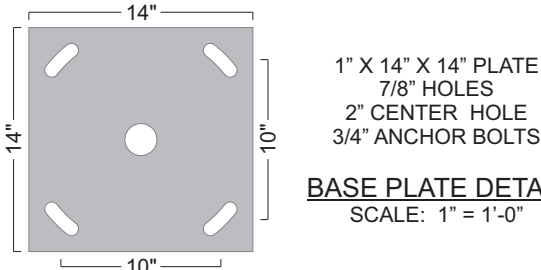
FRONT VIEW  
SCALE: 1/4" = 1'-0"



END VIEW  
SCALE: 1/4" = 1'-0"



GRAPHIC DETAIL  
SCALE: 1/4" = 1'-0"



BASE PLATE DETAIL  
SCALE: 1" = 1'-0"

POLE COVER DETAIL  
DESIGN FACTOR: TBD  
4MM CHARCOAL ACM POLE COVER  
.080" ALUMINUM CAP AND SHROUD  
EXTERIOR FINISH:  
POLE COVER - PRE-FINISHED  
CHARCOAL  
SHROUD AND BASE PLATE - MATCH  
B.M. 1631 MIDNIGHT OIL

CLEARANCE BAR DETAIL  
BLACK ACM PIPE W/ 180-25 GOLD  
VINYL STRIPES APPLIED 1ST SURFACE

SQUARE FEET: BOXED = 163.56  
ACTUAL = 20.22

PANEL DETAIL  
1/4" ALUMINUM PANEL W/ 1ST SURFACE PAINT  
& VINYL DECO.:  
MATCH PMS 123 C GOLD - BACK-GROUND,  
COPY & ARROW  
3630-22 BLACK - LANES

SWING ARM DETAIL  
DESIGN FACTOR: TBD  
18 GAUGE STEEL ARM WITH HINGE  
W/ 1ST SURFACE PAINT AND VINYL  
DECORATION:  
MATCH PMS 123 C GOLD - SWING ARM  
7725-12 BLACK - "CLEARANCE 9 FEET"  
COPY

"DRIVE-THRU" LETTER DETAIL  
3/4" ROUTED ALUMINUM LETTERS W/ 1ST  
SURFACE VINYL DECORATION:  
180-25 GOLD - "DRIVE-THRU" COPY  
BLACK - COPY OUTLINE

Customer:  
MCDONALD'S

Date:  
05/06/20

Prepared By:  
KH

Note: Color output may not be exact when viewing or printing this drawing. All colors used are PMS or the closest CMYK equivalent. If these colors are incorrect, please provide the correct PMS match and a revision to this drawing will be made.

Location:  
ALBUQUERQUE, NM

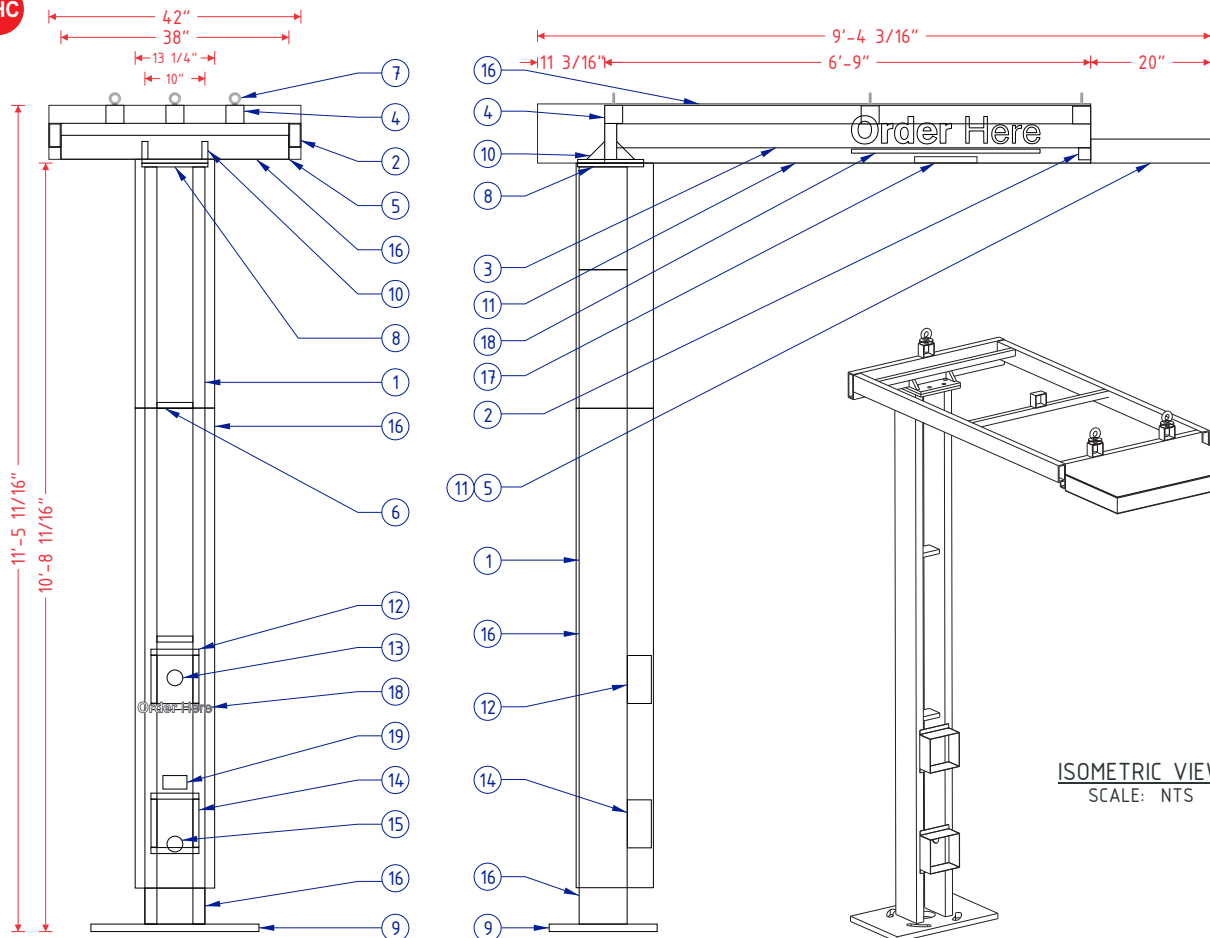
File Name:  
154421 - 4300 OSUNA NE - ALBUQUERQUE, NM

Eng:  
-

persōna  
SIGNS | LIGHTING | IMAGE

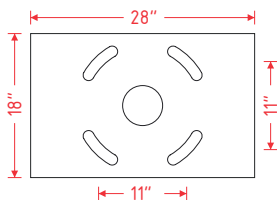
DISTRIBUTED BY SIGN UP COMPANY  
700 21st Street Southwest  
PO Box 210  
Watertown, SD 57201-0210  
1.800.843.9888 • www.personasigns.com

OHC



**FRAME & LAMP DETAIL**  
SCALE: 3/8" = 1'-0"

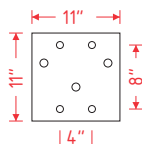
18" X 28" X 1 1/4" PLATE  
1 3/8" SLOTTED HOLES  
1" BOLTS



**PLATE DETAIL**  
SCALE: 1/2" = 1'-0"

**CROSS SECTION A-A**  
SCALE: 3/8" = 1'-0"

11" X 11" X 5/8" PLATE  
3/4" HOLES  
5/8" BOLTS



**PLATE DETAIL**  
SCALE: 1/2" = 1'-0"

**ISOMETRIC VIEW**  
SCALE: NTS

**GRAPHIC DETAIL**  
SCALE: 3/16" = 1'-0"

# MCDONALD'S SPRINGBOARD OHC SPECIFICATIONS

NO.	PART/DESCRIPTION
1	2" X 8" X 3/16" RECTANGULAR TUBE
2	2" X 6" X 1/4" RECTANGULAR TUBE
3	2" X 4" X 1/4" RECTANGULAR TUBE
4	3" X 3" X 3/16" SQUARE TUBE
5	1" X 4" X 1/8" RECTANGULAR TUBE
6	C4 ALUMINUM C-CHANNEL
7	1/2" EYEBOLTS (3)
8	11" X 11" X 5/8" TOP PLATES (2) (SEE PLATE DETAILS)
9	18" X 28" X 1 1/4" BASE PLATE (SEE PLATE DETAILS)
10	3" X 3" X 3/4" GUSSETS
11	.063" ALUMINUM SKIN
12	.063" ALUMINUM BENT SP10 SPEAKER BOX HOLDER
13	SPEAKER OPENING
14	.063" ALUMINUM BENT DM 4/DM 5 MICROPHONE BOX HOLDER
15	MICROPHONE OPENING
16	ACM CLADDING
17	SLOAN LED LIGHT WITH POWER SUPPLY
18	REFLECTIVE WHITE 680-10 VINYL
19	ADA STICKER

## NOTES:

- DESIGN FACTOR: TO BE DETERMINED
- 2" X 8" X 3/16" RECTANGULAR TUBE FRAME
- ACM AND .063" ALUMINUM SKIN
- EXTERIOR FINISH:
  - BASE PLATE - PAINT BM 1631 MIDNIGHT OIL
  - TUBE AND TOP ACM - PAINT CHARCOAL
  - SPRINGBOARD TIP AND UNDERSIDE - PAINT PMS 123 C GOLD
- ACM/SKIN REMOVABLE FOR SERVICE
- U.L. LISTED
- ELECTRICAL: 0.64 AMPS/120 VOLTS

Customer:  
**MCDONALD'S**

Location:  
**ALBUQUERQUE, NM**

Date:  
**05/06/20**

File Name:  
**154421 - 4300 OSUNA NE - ALBUQUERQUE, NM**

Prepared By:  
**KH**

Note: Color output may not be exact when viewing or printing this drawing. All colors used are PMS or the closest CMYK equivalent. If these colors are incorrect, please provide the correct PMS match and a revision to this drawing will be made.

Eng:  
-

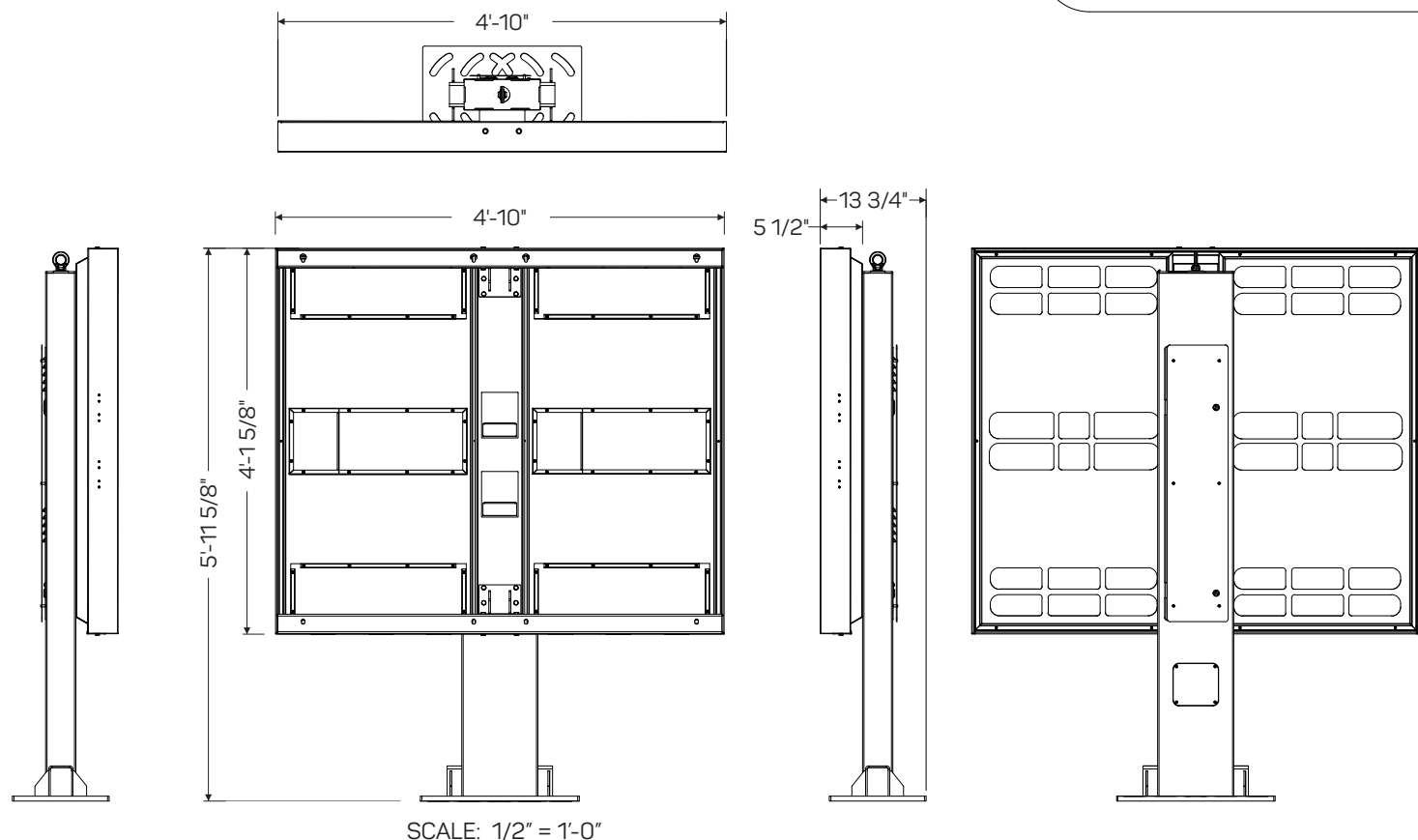
**persona**  
SIGNS | LIGHTING | IMAGE

DISTRIBUTED BY SIGN UP COMPANY  
700 21st Street Southwest  
PO Box 210  
Watertown, SD 57201-0210  
1.800.843.9888 • www.personasigns.com

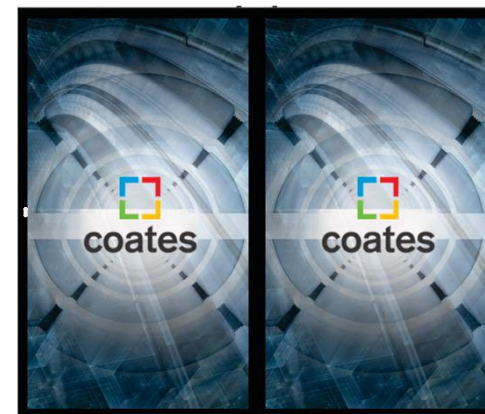
<b>Frame</b>	<b>Hot dip galvanized + anti-graffiti powder coated steel</b>
<b>Brackets</b>	<b>Hot dip galvanized</b>
<b>Panels</b>	<b>Aluminium + anti-graffiti powdercoat</b>
<b>Access fasteners</b>	<b>Security Torx</b>
<b>Media player access</b>	<b>Dual camlock</b>
<b>Eyebolt</b>	<b>Stainless crane on</b>
<b>Baseplate</b>	<b>McDonalds spec triple mounting pattern option</b>

## ODMB 02 DOUBLE

<b>Displays</b>	<b>2 x Samsung OH55F</b>
<b>Hardware</b>	<b>2 x Stratacache Spectra NG</b>
<b>Heating/Cooling</b>	<b>Watlow 100W Heater Sunon 120mm AC Fan</b>
<b>Power Supply Units</b>	<b>2 x 60W DC Media Player Power Supply</b>
<b>Power Cables</b>	<b>2 x IEC Power Cables</b>
<b>Electrical Components</b>	<b>Isolated Ground 2 x IG Receptacles 20A Circuit Breaker</b>
<b>Communication Cables</b>	<b>4 x HDMI 2 x RS232</b>
<b>Certification</b>	<b>UL Certified</b>



SCALE: 1/2" = 1'-0"



GRAPHIC DETAIL  
NOT TO SCALE

Customer:  
**MCDONALD'S**

Location:  
**ALBUQUERQUE, NM**

Date:  
**05/06/20**

File Name:  
**154421 - 4300 OSUNA NE - ALBUQUERQUE, NM**

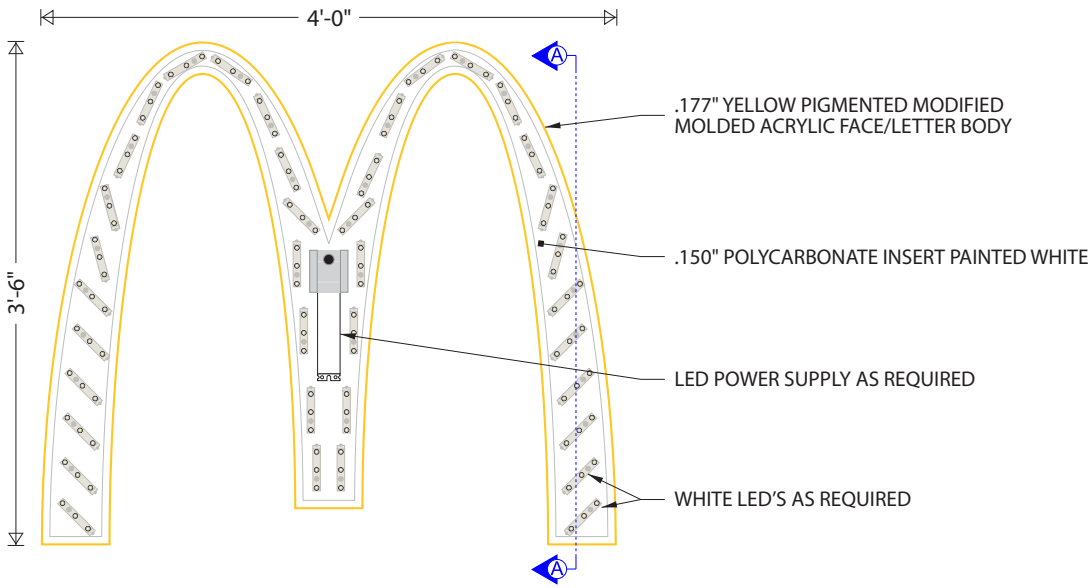
Prepared By:  
**KH**

**Note:** Color output may not be exact when viewing or printing this drawing. All colors used are PMS or the closest CMYK equivalent. If these colors are incorrect, please provide the correct PMS match and a revision to this drawing will be made.

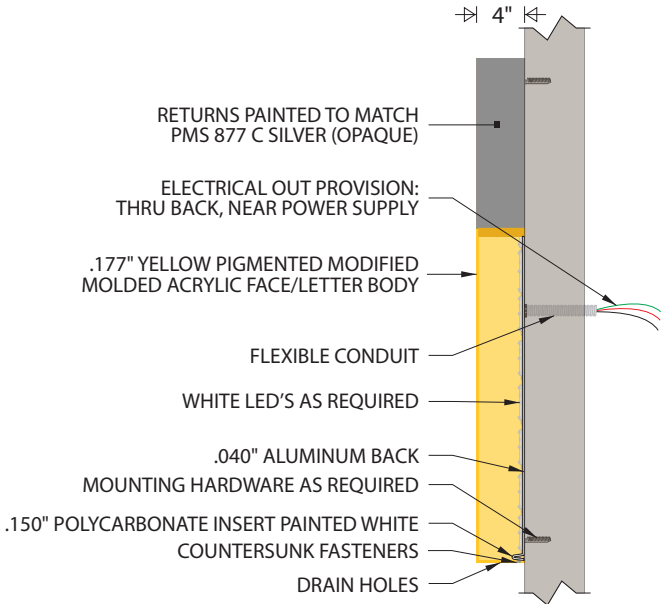
Eng:  
-

**persona**  
SIGNS | LIGHTING | IMAGE

DISTRIBUTED BY SIGN UP COMPANY  
700 21st Street Southwest  
PO Box 210  
Watertown, SD 57201-0210  
1.800.843.9888 • [www.personasigns.com](http://www.personasigns.com)



**FRAME & LAMP DETAIL**  
SCALE: 3/4" = 1'-0"

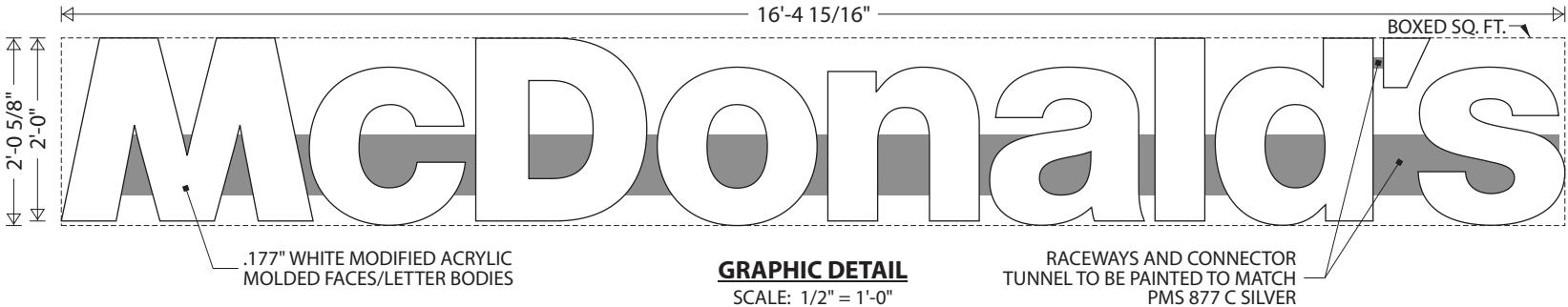


**CROSS SECTION A-A**  
SCALE: 3/4" = 1'-0"



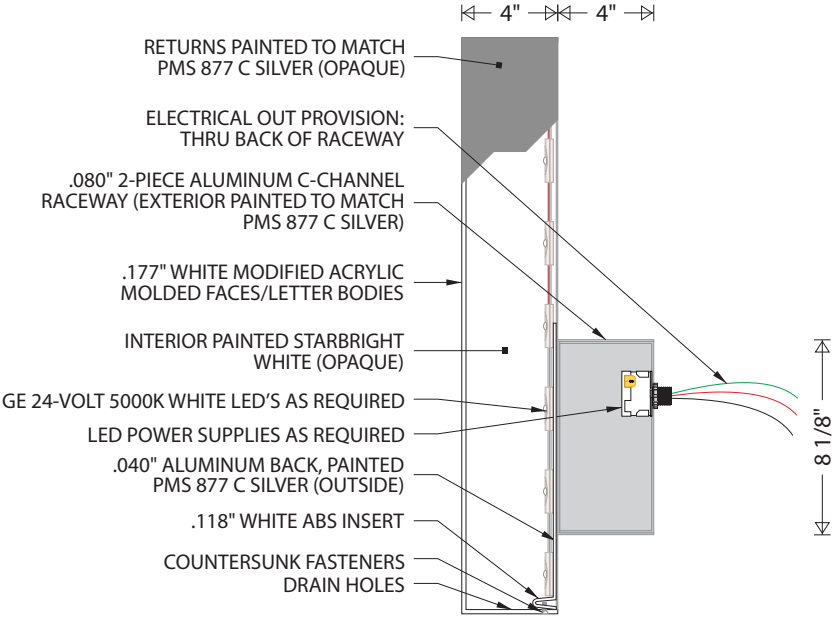
**GRAPHIC DETAIL**  
SCALE: 3/4" = 1'-0"

**FRAME DETAIL:**  
DESIGN FACTOR: TBD  
.177" FORMED YELLOW PIGMENTED (PMS 123 C)  
MODIFIED ACRYLIC FACE/LETTER BODY  
EXTERIOR FINISH: PAINTED TO MATCH PMS 877 C SILVER (OPAQUE)  
INTERIOR FINISH: PAINTED STARBRIGHT WHITE (OPAQUE)  
.150" POLYCARBONATE INSERT PAINTED STAR-BRIGHTWHITE  
.040" ALUMINUM BACK  
LETTER BODY REMOVABLE FOR SERVICE ACCESS  
U.L. APPROVED  
ELECTRICAL: 0.85 AMPS, 120 VOLTS  
SQUARE FOOTAGE:  
BOXED = 14.00  
ACTUAL = 4.90



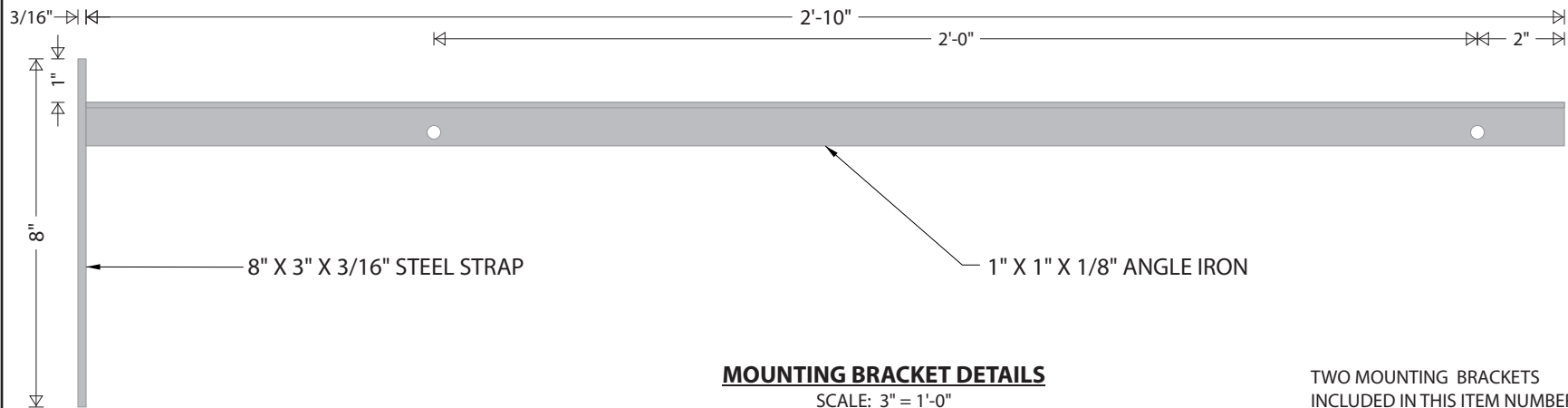
**GRAPHIC DETAIL**  
SCALE: 1/2" = 1'-0"

**NOTES:**  
.177" MOLDED WHITE MODIFIED ACRYLIC LETTER BODIES  
INSTALLED ON ALUMINUM BACKS  
.118" WHITE ABS INSERTS  
EXTERIOR FINISH: MATCH PMS 877 C SILVER (OPAQUE);  
BACKS PAINTED PMS 877 C SILVER  
INTERIOR FINISH: STAR-BRIGHT WHITE (OPAQUE)  
LETTER BODIES REMOVABLE FOR SERVICE ACCESS  
ACCESS PANEL BEHIND LETTER "n" FOR RACEWAY ACCESS  
U.L. APPROVED  
ELECTRICAL: 1.10 AMPS, 120 VOLTS  
SQUARE FOOTAGE:  
BOXED = 33.38  
ACTUAL = 19.53

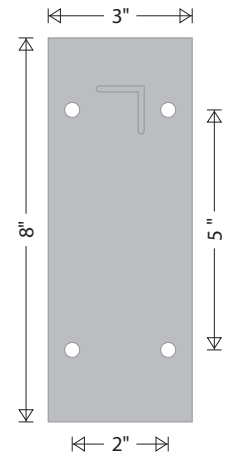


**LETTER PROFILE**  
SCALE: 1 1/2" = 1'-0"



**MOUNTING BRACKET DETAILS**

SCALE: 3" = 1'-0"

TWO MOUNTING BRACKETS  
INCLUDED IN THIS ITEM NUMBER**PLATE DETAILS**

SCALE: 3" = 1'-0"

**WINDOW POSITION SIGN DETAILS**

SCALE: 1 1/2" = 1'-0"

**BRACKET DETAILS**

DESIGN FACTOR: TBD  
 3/16" X 3" STEEL STRAP  
 1" X 1" X 1/8" ANGLE IRON ARM  
 EXTERIOR FINISH: PAINTED PMS  
 877 C SILVER  
 5/16" HOLES PUNCHED IN ANGLE  
 AND PLATE FOR MOUNTING

**WINDOW POSITION SIGNS DETAIL**

DESIGN FACTOR: TBD  
 .150" PIGMENTED PVC BOARD TO  
 MATCH GREY FORD - MED DK  
 PLATINUM  
 WHITE SCREENED COPY 1ST SURFACE  
 2.50 SQUARE FEET  
 \* BOTH WINDOW POSITION SIGNS  
 ARE INCLUDED IN THIS ITEM.

Customer:  
**MCDONALD'S**

Date:  
**05/06/20**

Prepared By:  
**KH**

Note: Color output may not be exact when viewing or printing this drawing. All colors used are PMS or the closest CMYK equivalent. If these colors are incorrect, please provide the correct PMS match and a revision to this drawing will be made.

Location:  
**ALBUQUERQUE, NM**

File Name:  
**154421 - 4300 OSUNA NE - ALBUQUERQUE, NM**

Eng:  
 -

**persona**  
 SIGNS | LIGHTING | IMAGE

DISTRIBUTED BY SIGN UP COMPANY  
 700 21st Street Southwest  
 PO Box 210  
 Watertown, SD 57201-0210  
 1.800.843.9888 • www.personasigns.com