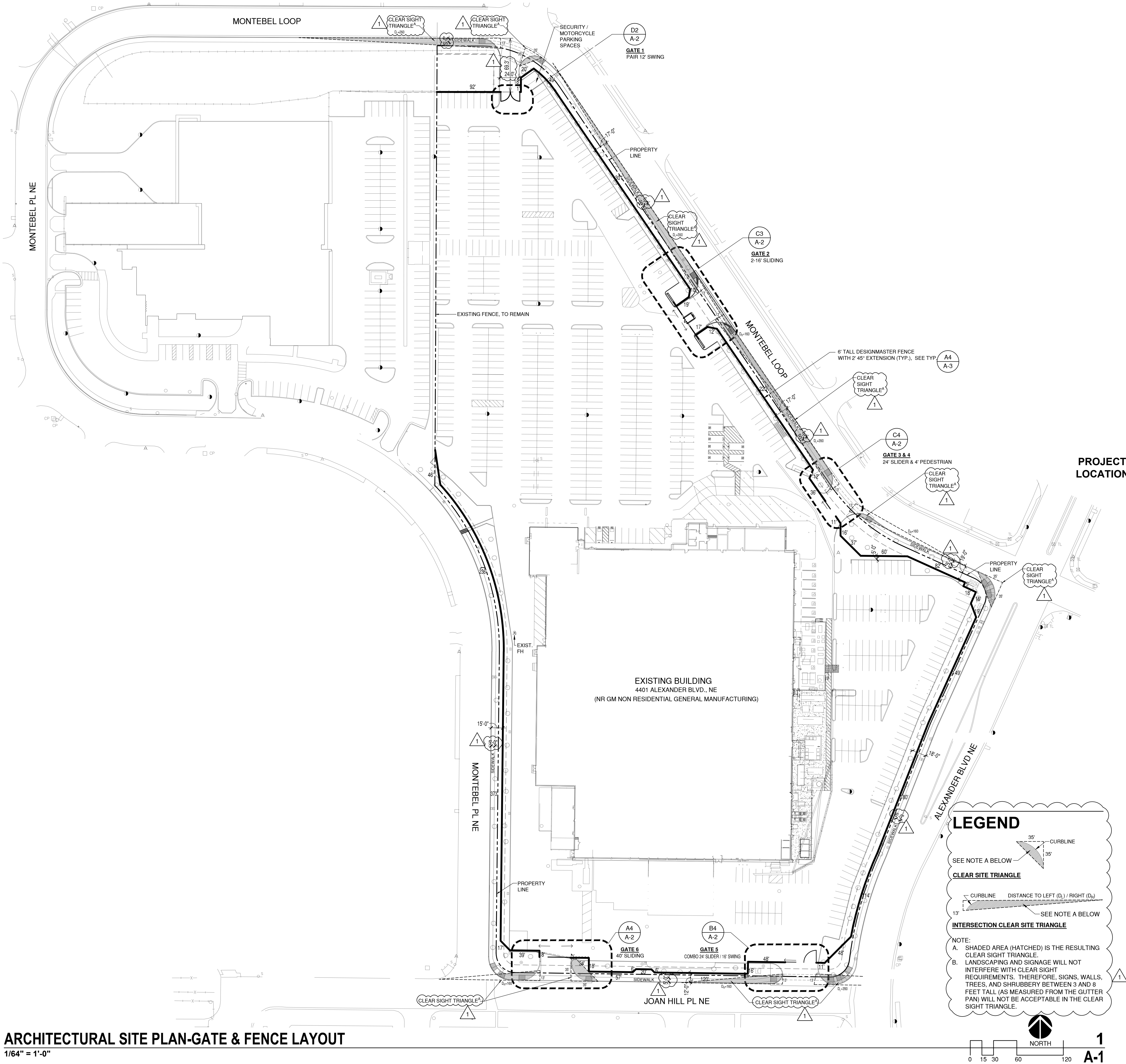


ADMINISTRATIVE AMENDMENT

FILE #: _____ PROJECT #: _____

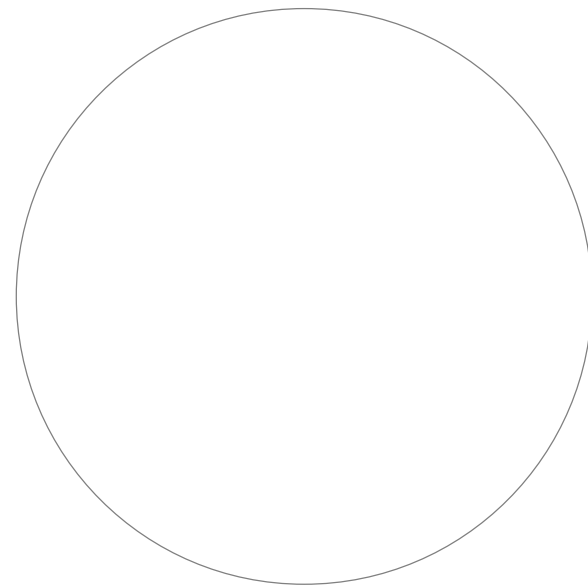
APPROVED BY

DATE



ARCHITECTURAL SITE PLAN-GATE & FENCE LAYOUT
1/64" = 1'-0"

CITY APPROVAL STAMP



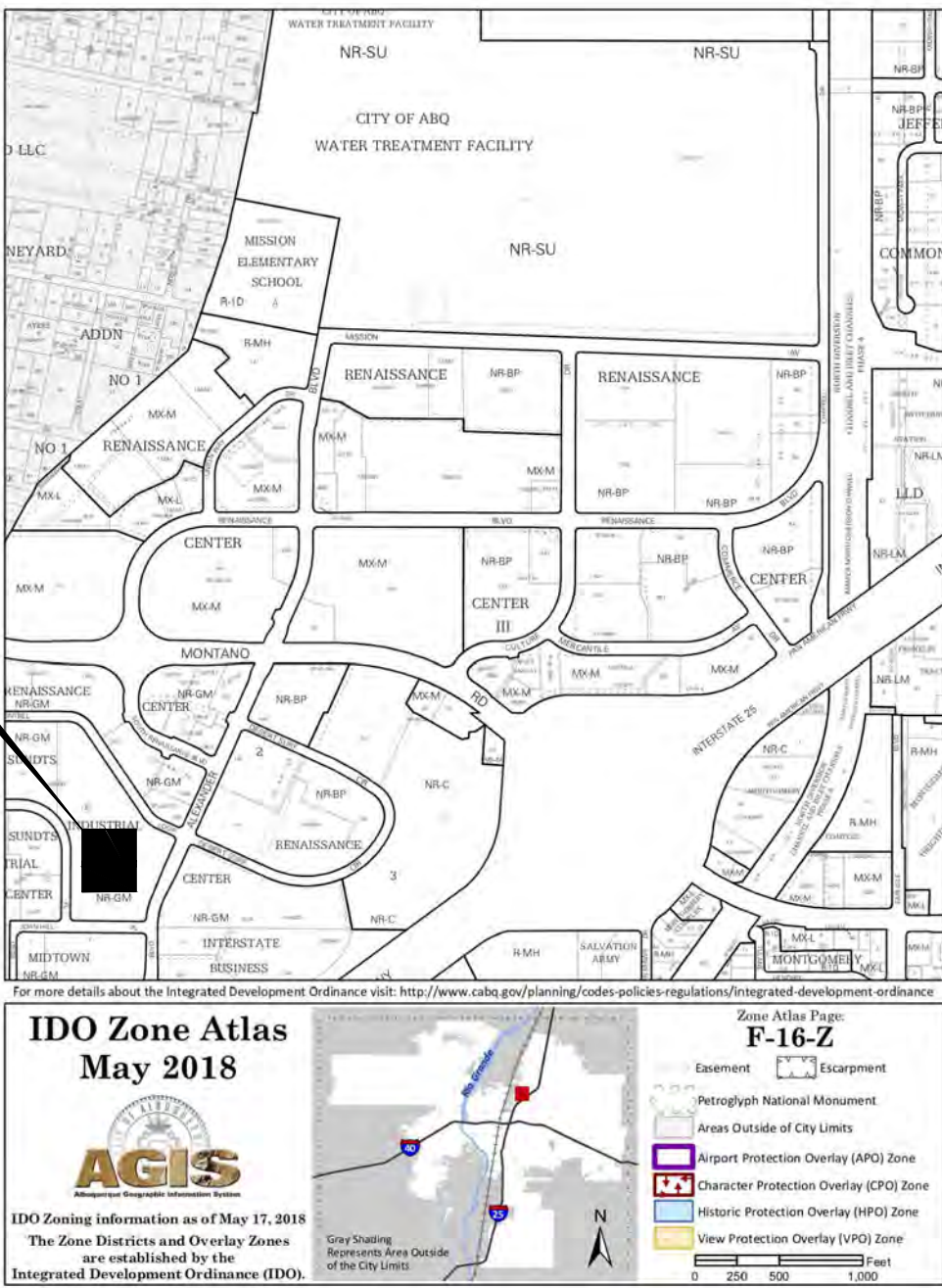
PROJECT DATA

PROJECT OWNER: AMRI
PROJECT ADDRESS: 4401 ALEXANDER BOULEVARD, NE
ZONING: NR GM NON RESIDENTIAL GENERAL MANUFACTURING

PROJECT DESCRIPTION

PROJECT IS FOR THE ADDITION OF A 6' HIGH PERIMETER FENCING AROUND THE PROPERTY WITH VARIOUS ENTRY GATES.

- NOTES:
1. PROVIDE FD KNOCK BOX AT MAIN GATE.
 2. FOR ALL WORK IN THE PUBLIC RIGHT-OF-WAY, SEE PUBLIC WORK ORDER NO. 695983.



ZONE ATLAS MAP F-16-Z

N.T.S.



JUNO

ARCHITECTS

7925 Bosque ST. NW, Albuquerque, NM 87114 Ph. (505) 892-8453 Fax. (505)890-1736

PROJECT:
AMRI SITE IMPROVEMENTS
4401 ALEXANDER BOULEVARD, NE
ALBUQUERQUE, NEW MEXICO

SHEET TITLE:
FENCE SITE LAYOUT PLAN

NO.	REVISION	DATE
1	TRANSPORTATION DEVELOPMENT COMMENTS	3/16/22



CONSULTANT STAMP

DATE:
1/27/22
PROJECT NO.
2105
SHEET NO.

A-1

Gate A
Emergency
EXIT ONLY
Do Not Enter

Gate B
EXIT ONLY
Do Not Enter

Gate B
EMPLOYEE/VISITOR
ENTRANCE ONLY

GATE 1

GATE 2

GATE 2

Gate C
Emergency
EXIT ONLY
Do Not Enter

Gate D
Emergency
EXIT ONLY
Do Not Enter

Gate E
TRUCK
ENTRANCE/EXIT
DELIVERIES
ONLY

$$\left(\overline{1'' = 1' - 0''} \right)$$

A-2



1/16" = 1'-0"

A-2


$$\underline{3/16'' = 1'-0''}$$

A-2



1/16" = 1'-0"

A-2


$$\frac{1}{16}'' = 1'-0''$$

A-2



1 1/2" = 1'-0"

A-2


$$\underline{3/16'' = 1'-0''}$$

A-2



1/16" = 1'-0"

A-2


$$1\frac{1}{2}'' = 1'-0''$$

A-2


$$\frac{1}{16}'' = 1'-0''$$

A-2

ARCHITECTS

7925 Bosque ST. NW, Albuquerque, NM 87114 Ph. (505) 892-8453 Fax. (505)890-1736

PROJECT:
AMRI SITE IMPROVEMENTS
4401 ALEXANDER BOULEVARD, NE
ALBUQUERQUE, NEW MEXICO

SHEET TITLE:

ENLARGED PLANS AND DETAIL

NO.	REVISION	DATE
1	TRANSPORTATION DEVELOPMENT COMMENTS	3/16/22

ARCHITECT STAMP

CONSULTANT STAMP

DATE: _____

1/27/22

PROJECT NO.

2105

SHEET NO.

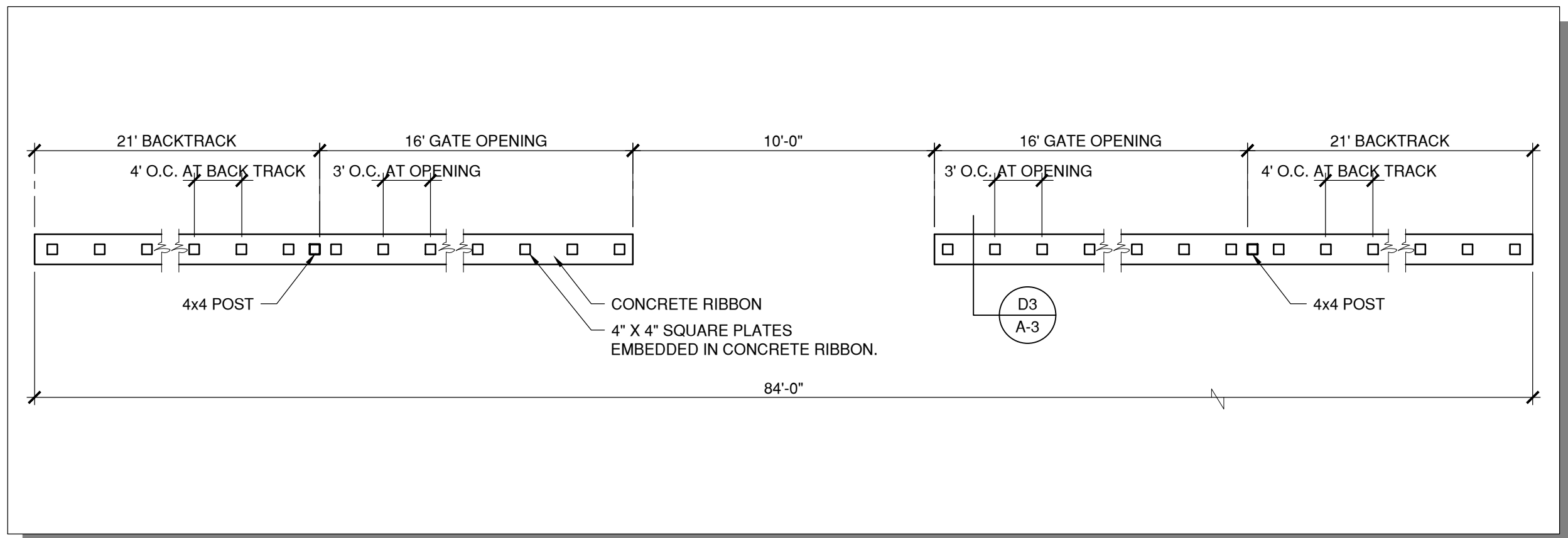
ARCHITECT STAMP

STATE OF NEW MEXICO

KEVIN JUNO
NO. 1603

Kevin Juno

A-2

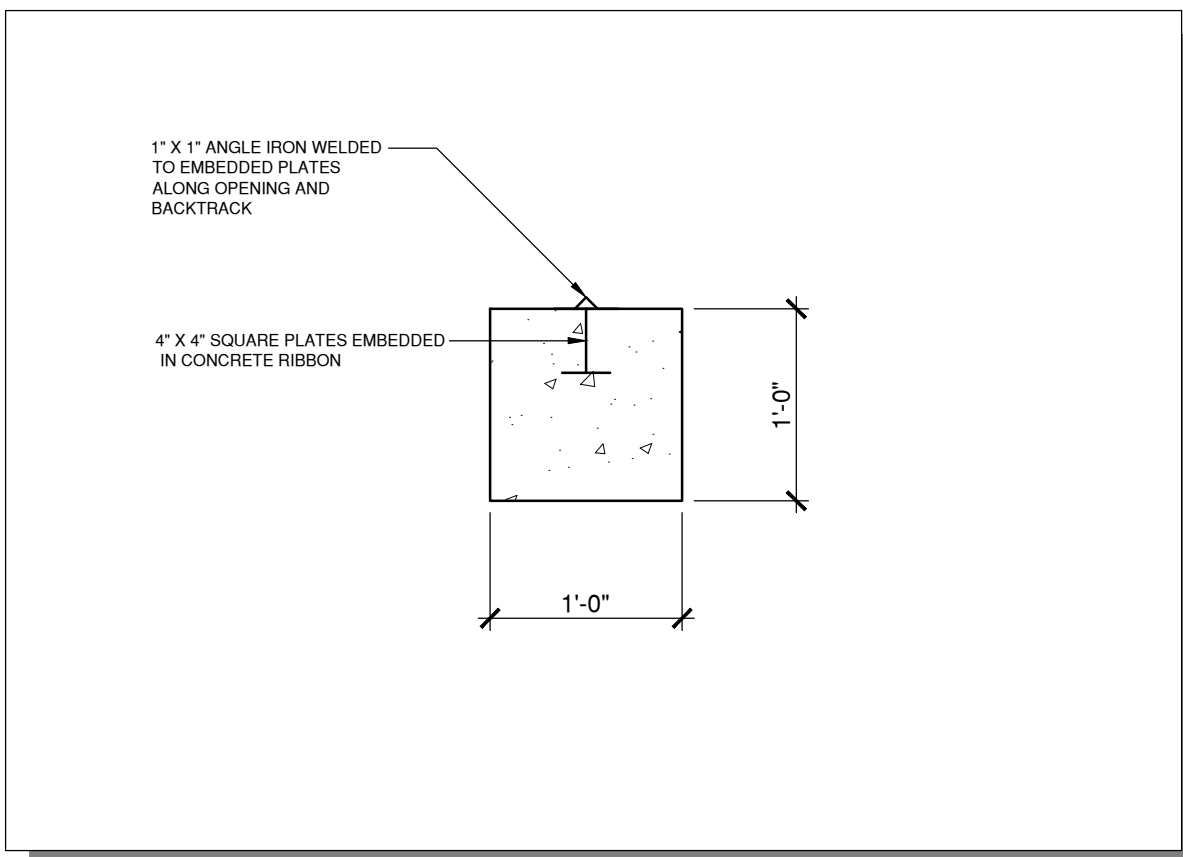


RIBBON PLAN DETAIL

1/4" = 1'-0"

D2

A-3



RIBBON SECTION DETAIL

1" = 1'-0"

D3

A-3

GATE DIMENSIONS			
GATE NUMBER	A	B	C
1	PR. 12'-0"		
2	2@16'-0"		
3	24'-0"		
4	4'-0"	SEE ELEV.	
5	24' SLIDE/16' SWING		
6	40'-0"		

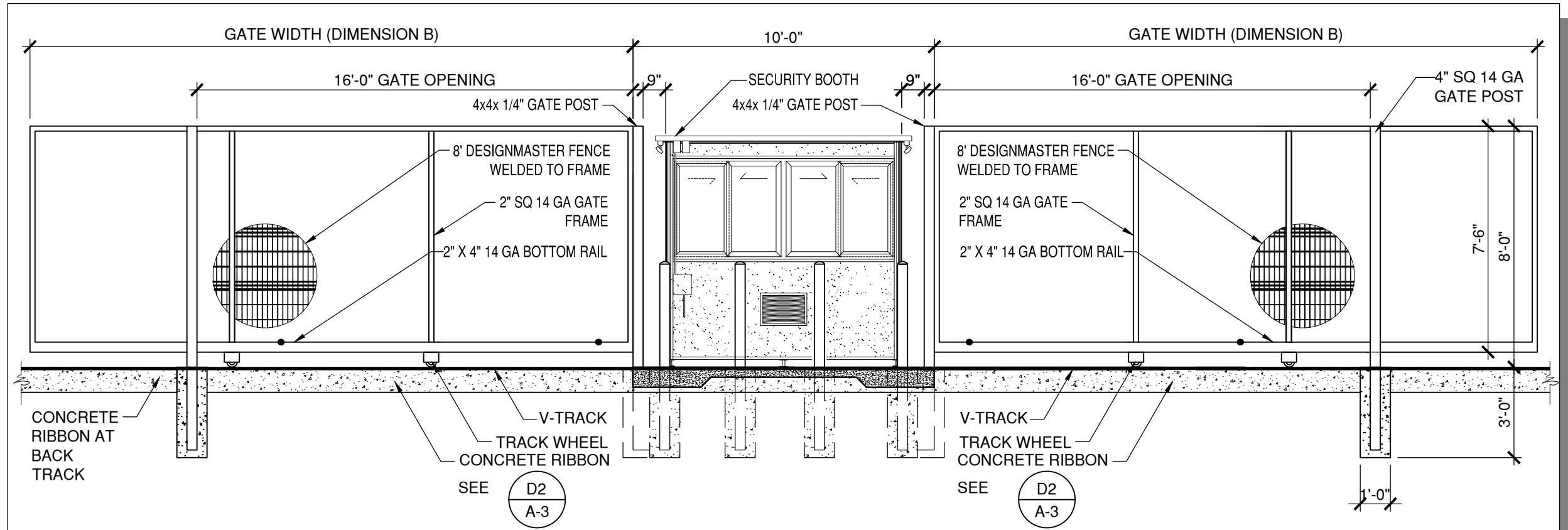
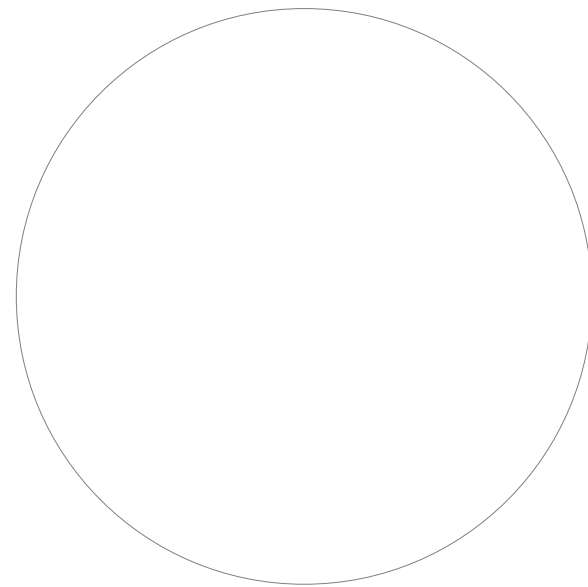
GATE DIMENSION TABLE

1/4" = 1'-0"

D4

A-3

CITY APPROVAL STAMP

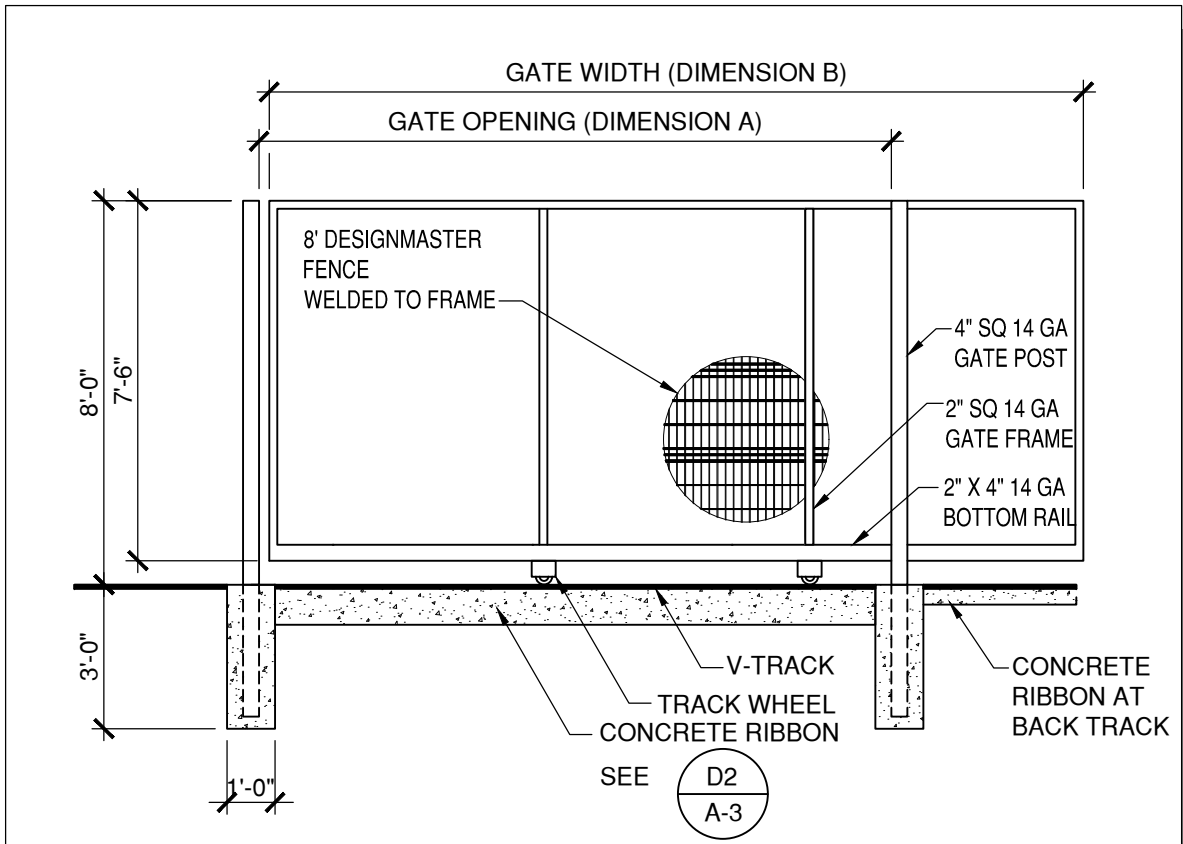


BI-PARTING V-TRACK GATE

1/4" = 1'-0"

C2

A-3

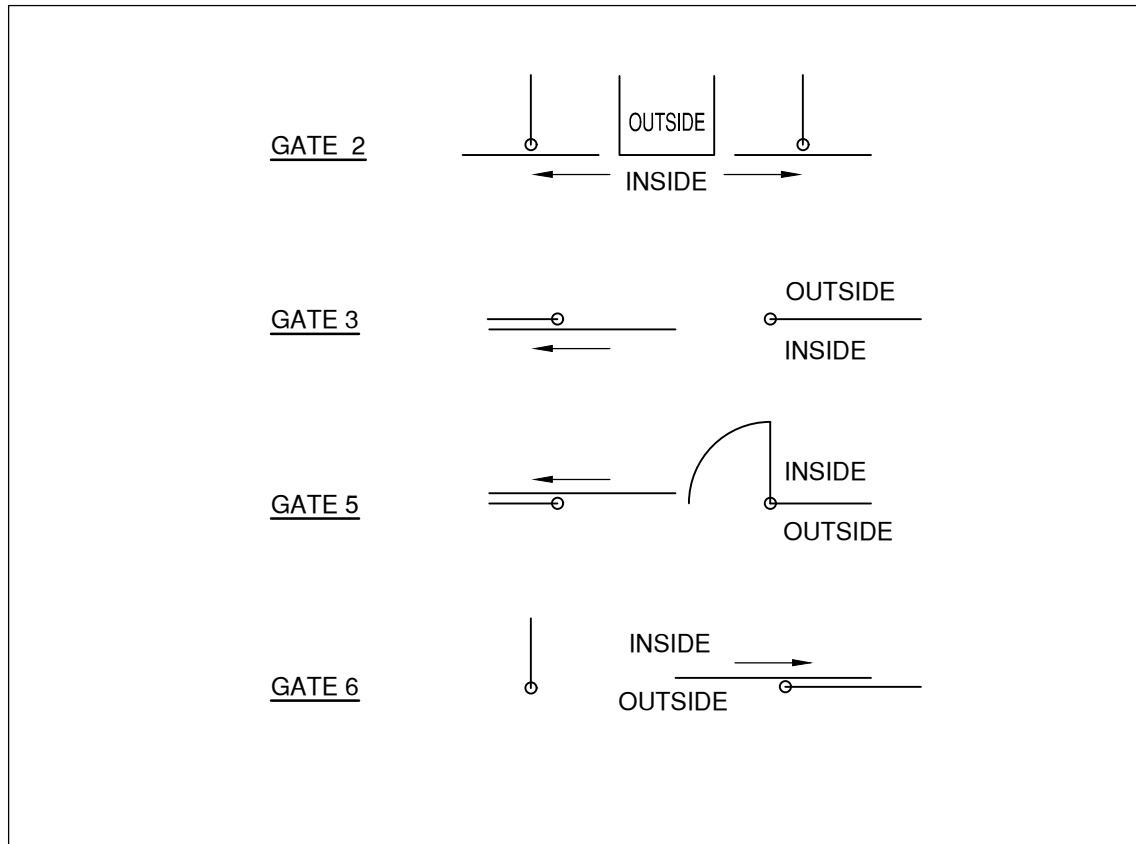


SLIDER V-TRACK GATE

1/4" = 1'-0"

C3

A-3

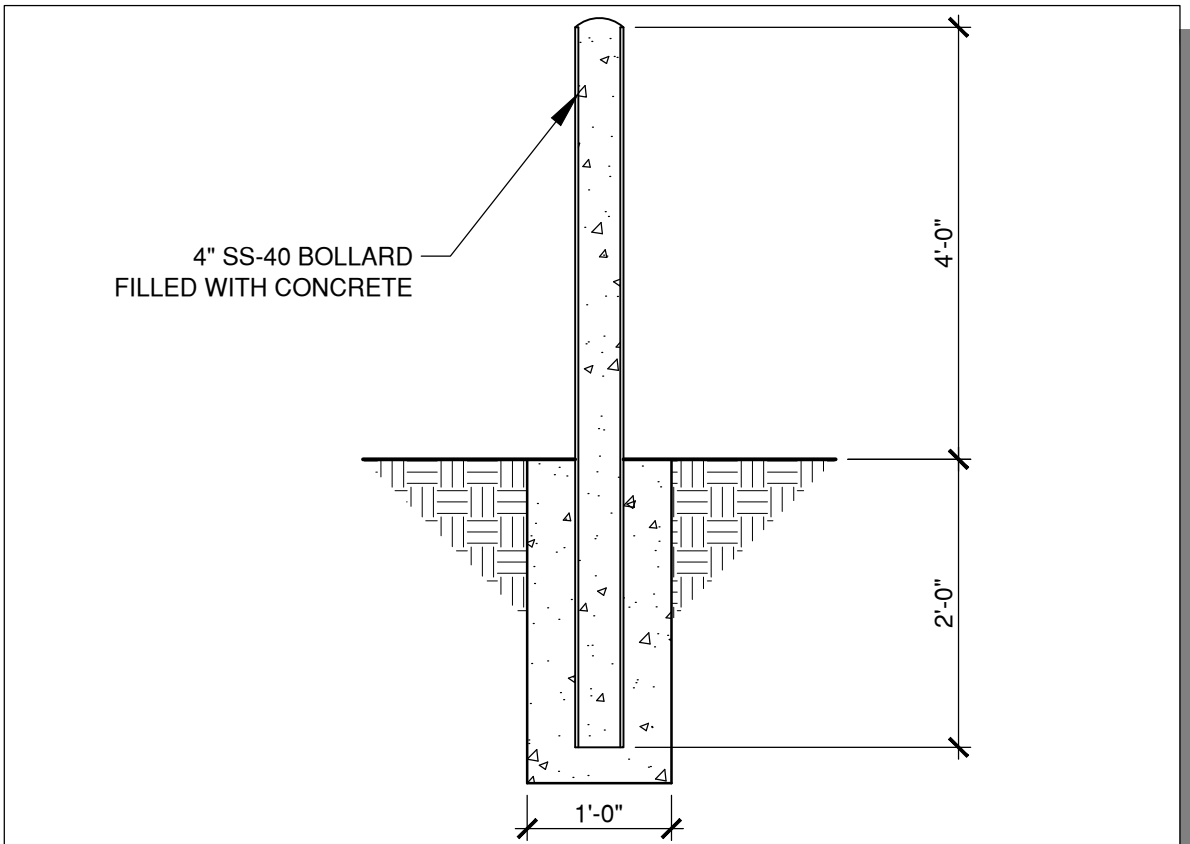


GATE SLIDE KEY

1/4" = 1'-0"

C4

A-3

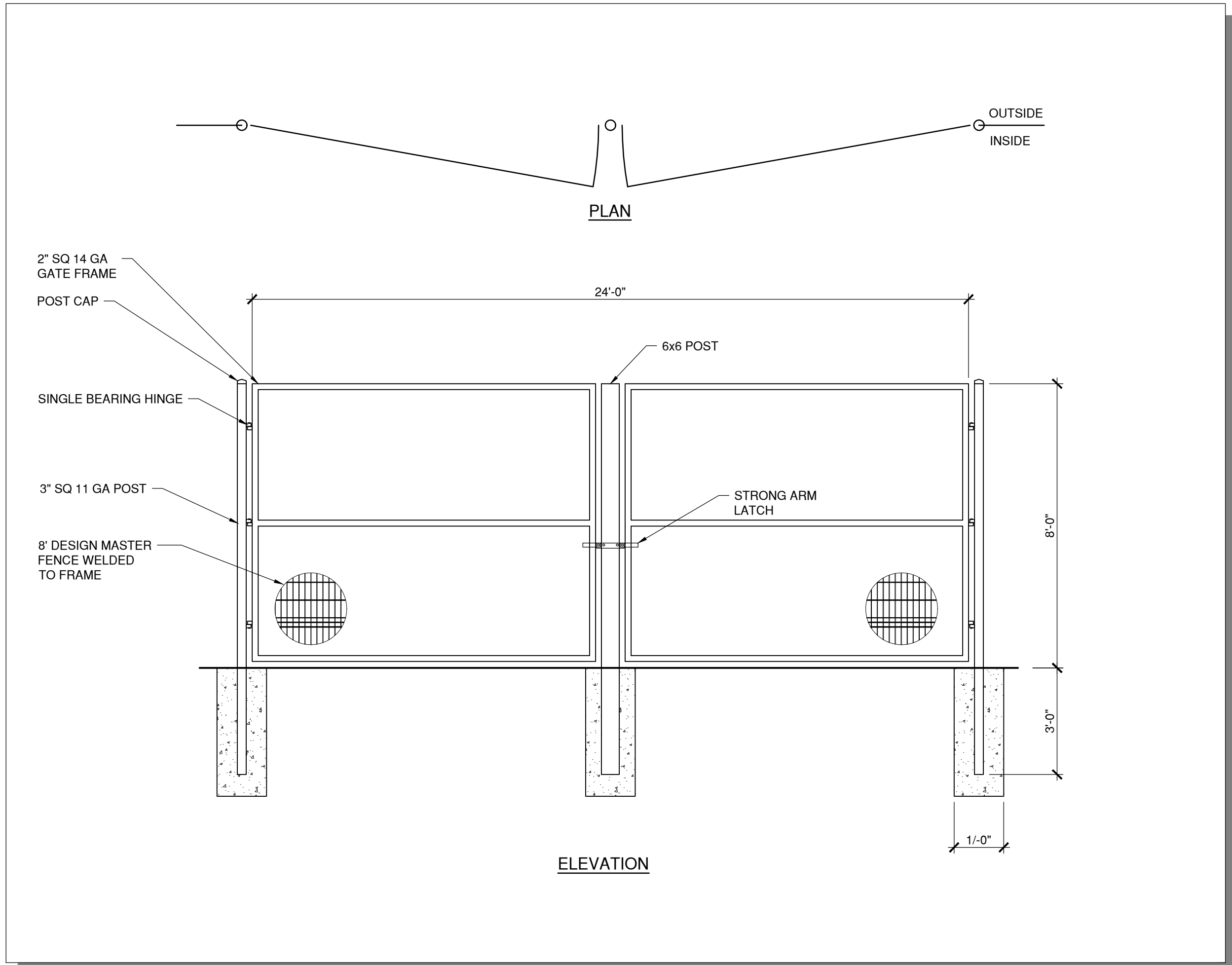


BOLLARD DETAIL

3/4" = 1'-0"

C5

A-3

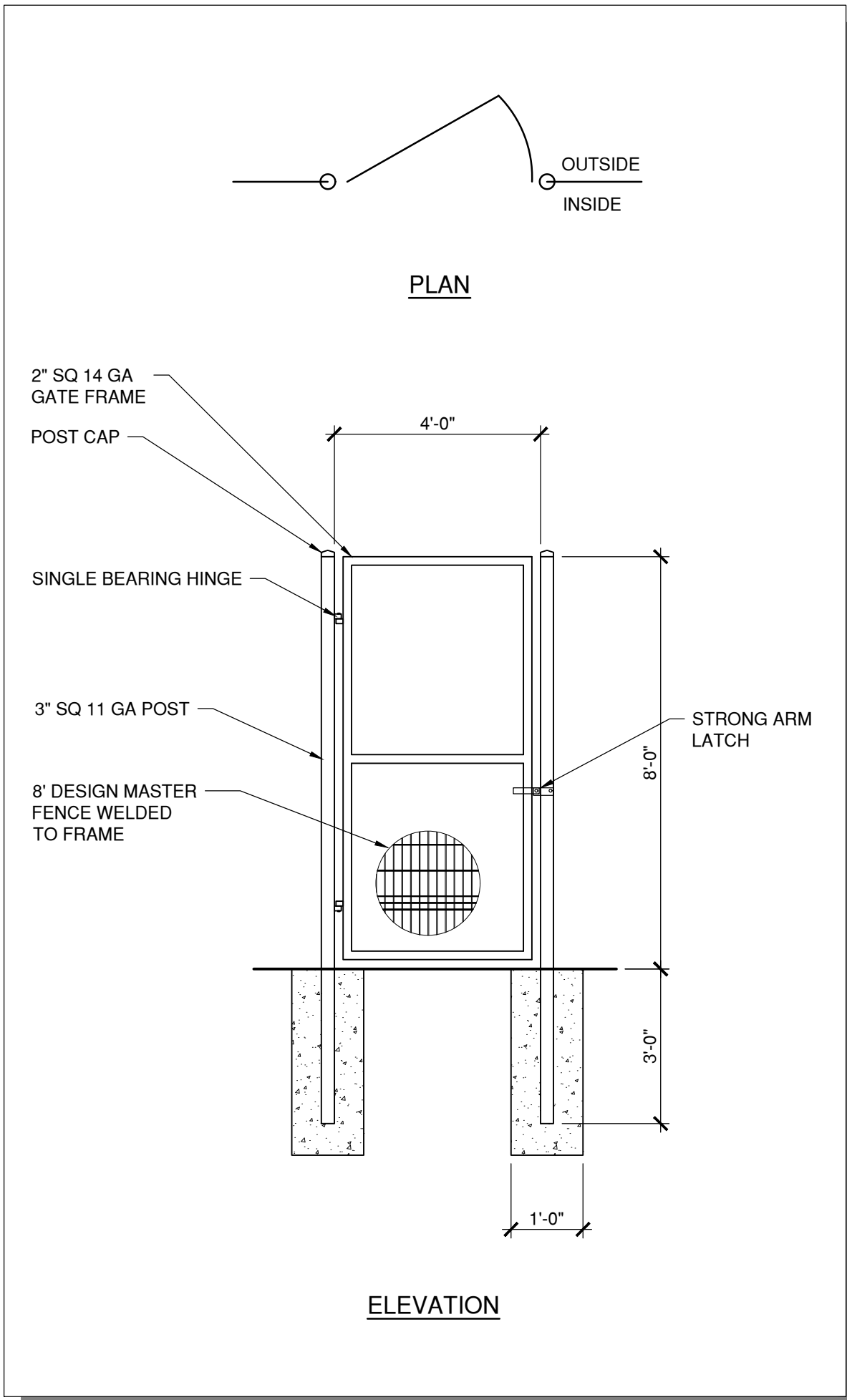


SWING GATE 1 DETAIL

3/8" = 1'-0"

A2

A-3

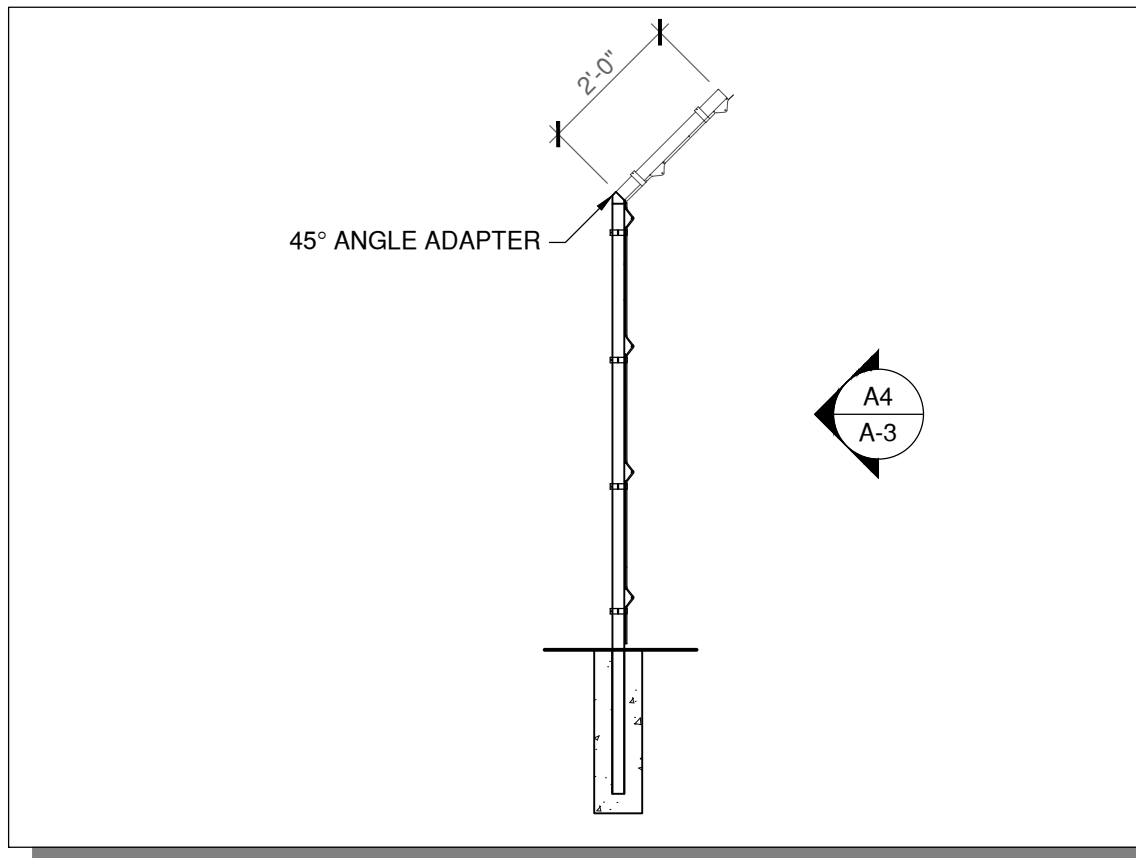


PEDESTRIAN GATE 4 DETAIL

3/8" = 1'-0"

A3

A-3

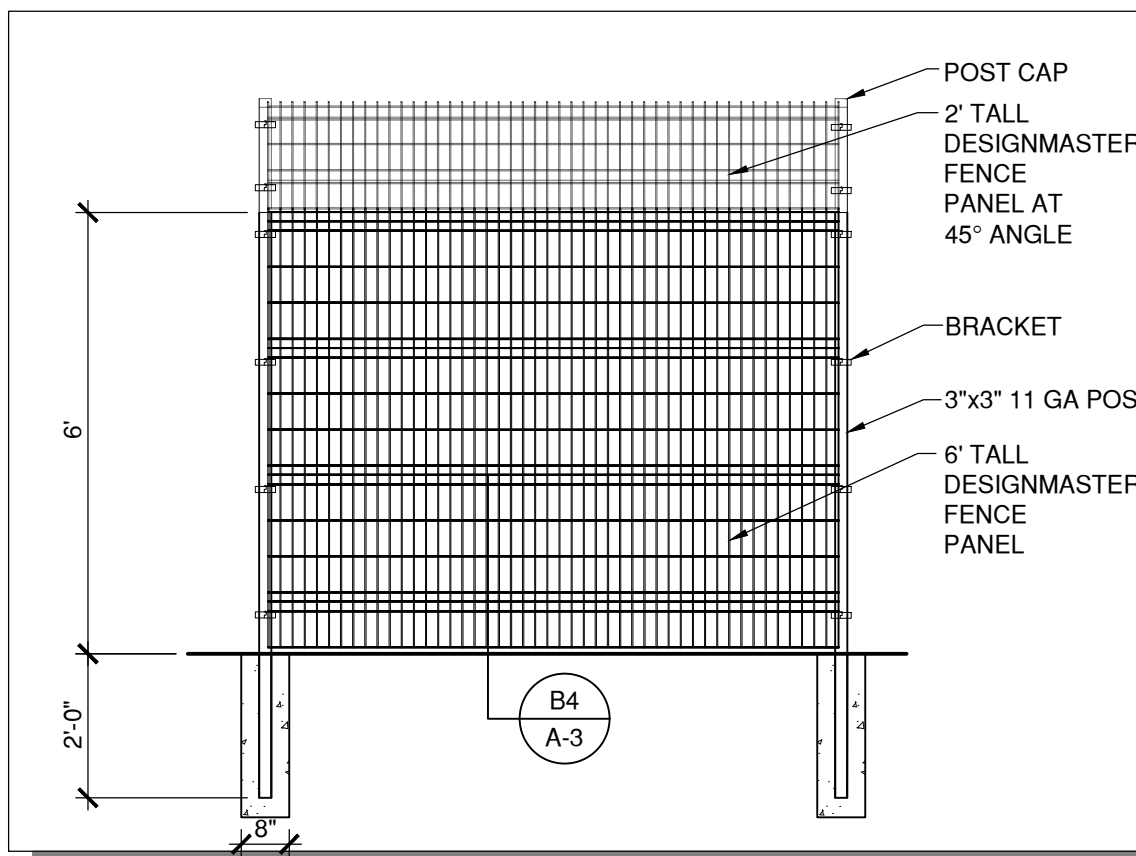


FENCE SECTION PROFILE

3/8" = 1'-0"

B4

A-3



FENCE ELEVATION DETAIL

3/8" = 1'-0"

A4

A-3

JUNO

ARCHITECTS

7925 Bosque ST. NW, Albuquerque, NM 87114 Ph. (505) 892-8453 Fax. (505)890-1736

PROJECT:
AMRI SITE IMPROVEMENTS
4401 ALEXANDER BOULEVARD, NE
ALBUQUERQUE, NEW MEXICO

SHEET TITLE:

DETAILS

NO.	REVISION	DATE

ARCHITECT STAMP

CONSULTANT STAMP

DATE:

1/27/22

PROJECT NO.

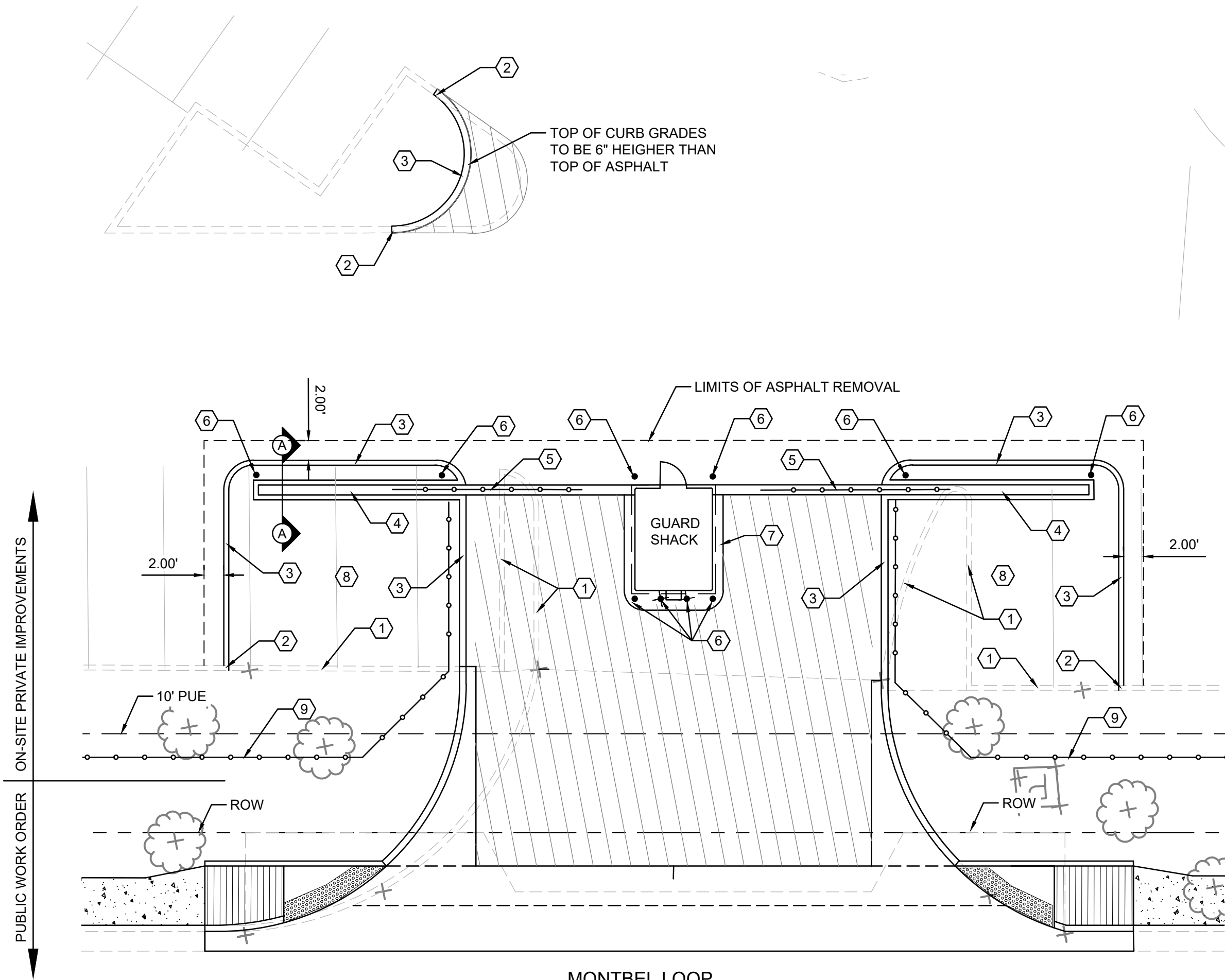
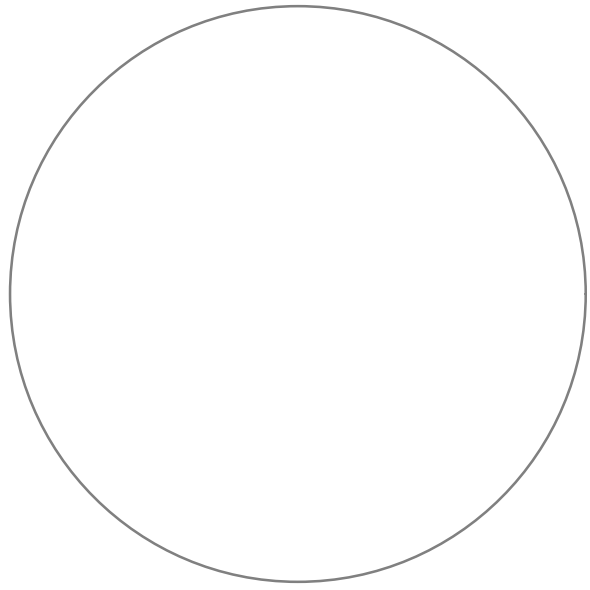
2105

SHEET NO.

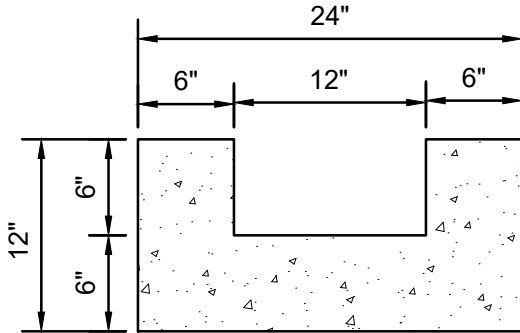
A-3



Kevin Juno 1.27.22



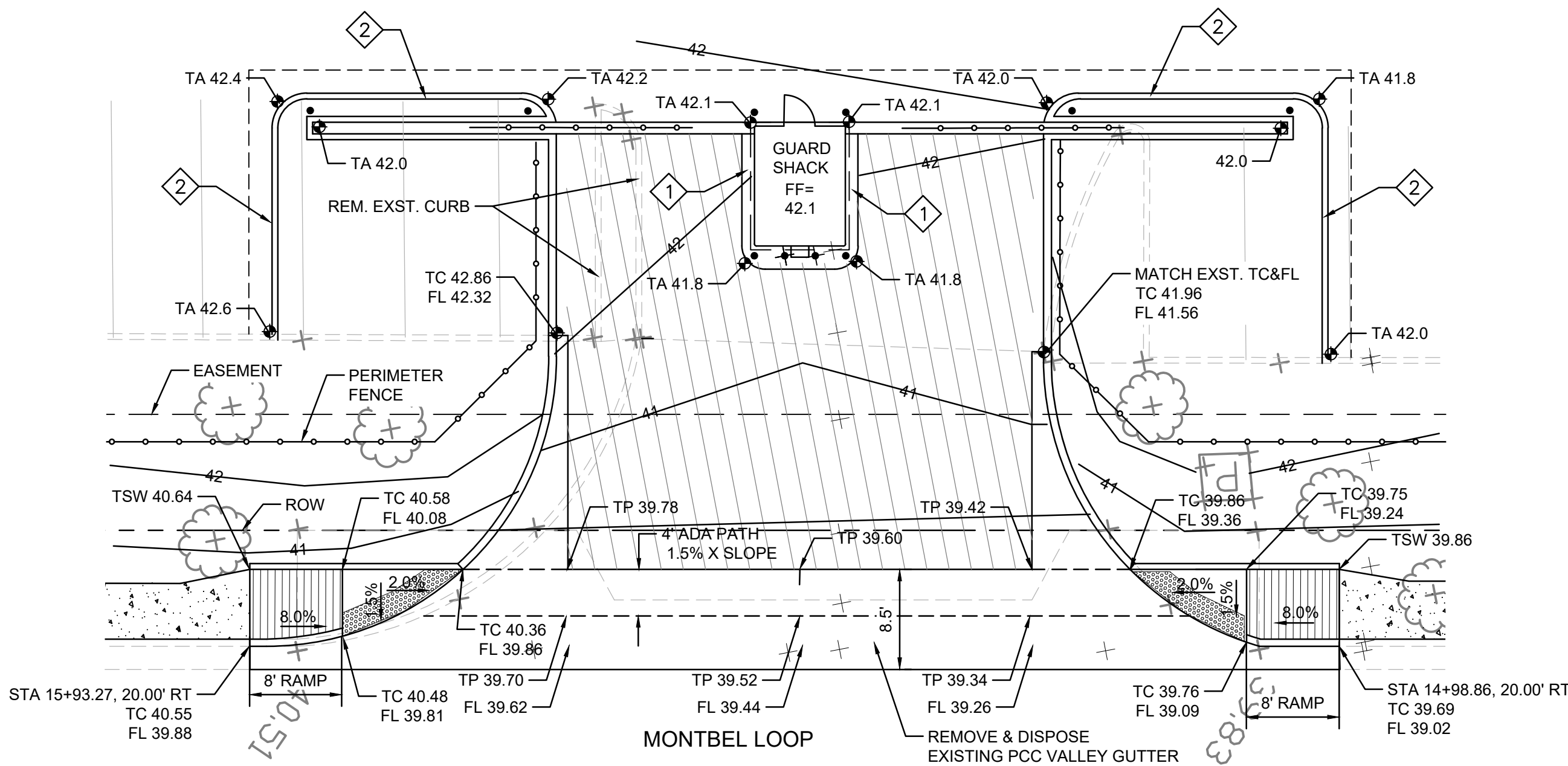
- CONSTRUCTION NOTES**
- 1 REMOVE & DISPOSE PCC CURB.
 - 2 SAW-CUT CURB AT BACK OF NEW CURB.
 - 3 6" WIDE PCC HEADER CURB.
 - 4 GATE TRACK, SEE DETAIL THIS SHEET.
 - 5 SLIDING GATE, SEE GATE PLAN.
 - 6 4" DIAMETER PCC FILLED STEEL BOLLARD.
 - 7 PCC APRON, FLUSH WITH ASPHALT PAVING.
 - 8 NEW LANDSCAPING, SEE LANDSCAPING PLAN.
 - 9 NEW PRIVATE FENCE, SEE FENCING PLAN.

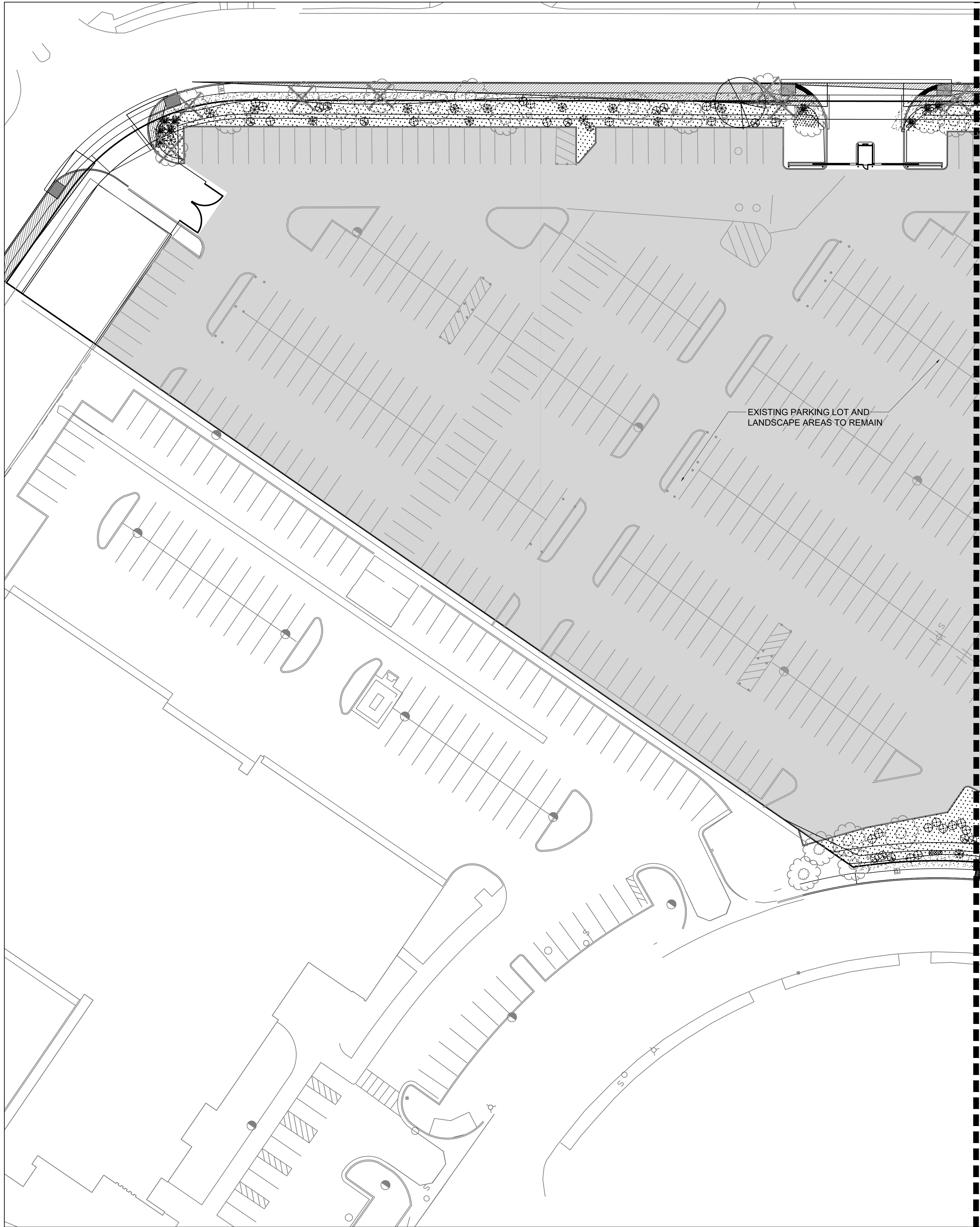


- GATE TRACK NOTES:**
1. EXPOSED CORNERS TO HAVE $\frac{3}{8}$ " CHAMFER.
 2. 4000 LB PCC.
 3. CONSTRUCTION JOINTS AT 6' OC.

"U" GATE TRACK DETAIL A-A
1"=1'-0"

ENTRANCE "B" LAYOUT
SCALE: 1"=10'





PLANT LEGEND

QTY.	SYMBOL	SCIENTIFIC NAME COMMON NAME (WATER USE)	SIZE	MATURE SIZE
TREES - REFERENCE DETAIL 1-2/L501				
4		CHILOPSIS LINEARIS DESERT WILLOW 'BUBBA' (RW)	24" BOX	20' HT. X 25' SPR.
4		PISTACIA CHINENSIS CHINESE PISTACHE (M)	2.5" B&B	40' HT. X 30' SPR.
SHRUBS AND GROUNDCOVERS - REFERENCE DETAIL 3-4/L501				
56		UPRIGHT GERMANDER TEUCRIUM CHAMAEDRYS (L)	1-GAL	2' HT. X 2' SPR.
92		CYTISUS X PRAECOX 'ALL GOLD' ALL GOLD SCOTCH BROOM (L)	5-GAL	5' HT. X 5' SPR.
78		FALLUGIA PARADOXA APACHE PLUME (L)	5-GAL	5' HT. X 5' SPR.
85		JUNIPERUS HORIZONTALIS 'BLUE CHIP' BLUE CHIP JUNIPER (M)	5-GAL	8" HT. X 8' SPR.
96		NANDINA DOMESTICA 'MONFAR' SIENNA SUNRISE HEAVENLY BAMBOO (M)	5-GAL	3' HT. X 2' SPR.
73		BUDDLEJA DAVIDII 'NANHO BLUE' BUDDLEIA NANHO BLUE	5-GAL	5' HT. X 5' SPR.
MULCHES				
37,574 SF		1" AMARETTO BROWN CRUSHED GRAVEL MULCH AT 3" DEPTH OVER FILTER FABRIC		
12,444 SF		2"-4" COYOTE MIST COBBLE AT 4" DEPTH OVER FILTER FABRIC AT HEADER CURBS OR SLOPES GREATER THAN 4:1 PLACE 4-8" COYOTE MIST COBBLE AT 8" DEPTH OVER FILTER FABRIC		

EXISTING LANDSCAPE LEGEND

QTY.	SYMBOL	DESCRIPTION
61		EXISTING TREES TO REMAIN WITHIN IMPROVEMENT AREA (AVERAGE SPREAD 25' FOR CALCULATIONS)
32		EXISTING TREE TO BE REMOVED (DUE TO HEALTH OR LOCATION)
		EXISTING BUILDING, SITE AND LANDSCAPE TO REMAIN (EXISTING IRRIGATION TO REMAIN AND MUST BE PROVIDED TO EXISTING LANDSCAPE AREAS TO REMAIN)

LANDSCAPE NOTES AND CALCULATIONS

IRRIGATION
IRRIGATION SYSTEM STANDARDS OUTLINED IN THE WATER CONSERVATION LANDSCAPING AND WATER WASTE ORDINANCE SHALL BE STRICTLY ADHERED TO. A FULLY AUTOMATED IRRIGATION SYSTEM WILL BE USED TO IRRIGATE TREE, SHRUB AND GROUNDCOVER PLANTING AREAS. THE IRRIGATION SYSTEM SHALL BE DESIGNED TO ISOLATE PLANT MATERIAL ACCORDING TO SOLAR EXPOSURE AND WILL BE SET UP BY PLANT ZONES ACCORDING TO WATER REQUIREMENTS. THE TREES WILL BE PROVIDED WITH (6) 2 GPH EMITTERS, WITH THE ABILITY TO BE EXPANDED TO ACCOMMODATE THE GROWTH OF THE TREE. SHRUBS AND GROUNDCOVERS WILL BE PROVIDED WITH (2) 1 GPH EMITTERS. TREES, SHRUBS AND GROUNDCOVERS WILL BE GROUPED ON THE SAME VALVE.

RESPONSIBILITY OF MAINTENANCE
MAINTENANCE OF ALL PLANTING AND IRRIGATION, INCLUDING THOSE WITHIN THE PUBLIC R.O.W., SHALL BE THE RESPONSIBILITY OF THE PROPERTY OWNER.

METHOD FOR COMPLYING WITH WATER CONSERVATION ORDINANCE
THE PLANT PALETTE IS PREDOMINANTLY COMPRISED OF PLANTS WITH LOW TO MEDIUM WATER USE REQUIREMENTS, THEREBY MINIMIZING IRRIGATION NEEDS WHILE ENSURING THE VIABILITY OF THE PLANTS.

PNM COORDINATION
COORDINATION WITH PNM'S NEW SERVICE DELIVERY DEPARTMENT IS NECESSARY REGARDING PROPOSED TREE LOCATION AND HEIGHT, SIGN LOCATION AND HEIGHT, AND LIGHTING HEIGHT IN ORDER TO ENSURE SUFFICIENT SAFETY CLEARANCES.

SCREENING WILL BE DESIGNED TO ALLOW FOR ACCESS TO ELECTRIC UTILITIES. IT IS NECESSARY TO PROVIDE ADEQUATE CLEARANCE OF TEN FEET IN FRONT AND AT LEAST 5 FEET ON THE REMAINING THREE SIDES SURROUNDING ALL GROUND-MOUNTED EQUIPMENT FOR SAFE OPERATION, MAINTENANCE AND REPAIR PURPOSES.

CLEAR SIGHT DISTANCE:
LANDSCAPING AND SIGNAGE WILL NOT INTERFERE WITH CLEAR SIGHT REQUIREMENTS. THEREFORE, SIGNS, WALLS, TREES, AND SHRUBBERY BETWEEN 3 AND 8 FEET TALL (AS MEASURED FROM THE GUTTER PAN) WILL NOT BE ACCEPTABLE IN THE AREA.

LANDSCAPE AREA COVERAGE
LANDSCAPE AREA TO BE RENNOVATED: 50,018 SF
(EXCLUDING BUILDING AND PARKING LOTS TO REMAIN)

LANDSCAPE LIVE VEGETATIVE COVERAGE
LANDSCAPE COVERAGE REQUIREMENTS SPECIFY TREE CANOPIES AND GROUND-LEVEL PLANTS SHALL COVER A MINIMUM OF 75%. A MINIMUM OF 25% SHALL BE PROVIDED AS GROUND-LEVEL PLANTS (SHRUBS, GRASSES, ETC.) OF THE REQUIRED VEGETATIVE COVERAGE.

REQUIRED LIVE VEGETATIVE MATERIAL COVERAGE (75%)	37,514 SF
PROVIDED LIVE VEGETATIVE MATERIAL COVERAGE (88%)	44,253 SF
REQUIRED GROUND-LEVEL PLANT COVERAGE (25%)	9,378 SF
PROVIDED GROUND-LEVEL PLANT COVERAGE (25%)	9,510 SF

STREET TREES
STREET TREE REQUIREMENTS SPECIFY THE SPACING BETWEEN STREET TREES, WITHIN THE PUBLIC RIGHT-OF-WAY, SHALL BE INSTALLED AT A FREQUENCY OF 30 FEET PER LINEAR FOOT OF STREET FRONTAGE.

MONTBEL LOOP NE: LOCAL - NO STREET TREES REQUIRED
- PROVIDED TREES: 20

MONTBEL PLACE NE: LOCAL - NO STREET TREES REQUIRED
- PROVIDED TREES: 11

JOAN HILL PL NE: LOCAL - NO STREET TREES REQUIRED
- PROVIDED TREES: 5

ALEXANDER BLVD - 561 LF
- REQUIRED TREES: 19
- PROVIDED: 20 TREES

CITY SUBMITTAL NOTES

- THE LANDSCAPE PLAN ON FILE FOR THIS SITE DEVELOPMENT PLAN WAS ILLEGIBLE. THE PLAN CHANGES WILL ONLY ADDRESS REMOVAL OF TREES LOCATED WITHIN THE NEW SIDEWALK IMPROVEMENT AND ALL OTHER EXISTING TREES WILL REMAIN. ALL EXISTING TURF GRASS HAS DIED AND WILL BE REPLACED WITH GRAVEL OR COBBLE OVER FILTER FABRIC. THE EXISTING SPRAY IRRIGATION SYSTEM WILL BE MODIFIED TO A DRIP SYSTEM.
- ADDITIONAL PLANTINGS WILL BE PLACED TO ENHANCE THE EXISTING LANDSCAPE AREAS.

GENERAL NOTES

- PRIOR TO BEGINNING WORK ON THE PROJECT, THE LANDSCAPE CONTRACTOR SHALL REVIEW THE PROJECT IN THE FIELD WITH THE OWNER'S REPRESENTATIVE. IF DISCREPANCIES OCCUR BETWEEN THE DRAWINGS AND THE SITE, THE LANDSCAPE CONTRACTOR SHALL NOTIFY THE OWNER'S REPRESENTATIVE FOR CLARIFICATION PRIOR TO PROCEEDING ON THAT PORTION OF WORK.
- IT IS THE LANDSCAPE CONTRACTOR'S RESPONSIBILITY TO LOCATE ALL UNDERGROUND UTILITIES PRIOR TO COMMENCEMENT OF PLANTING OPERATIONS.
- ALL PLANTING AREAS ARE TO HAVE WEEDS AND COMPETITIVE VEGETATION REMOVED PRIOR TO PREPARATION FOR PLANTING.
- THE OWNER'S REPRESENTATIVE SHALL APPROVE ALL PLANT MATERIAL PRIOR TO PLANTING. IN ADDITION, THE OWNER REPRESENTATIVE RESERVES THE RIGHT TO REFUSE ANY PLANT MATERIAL DEEMED UNACCEPTABLE. THE OWNER'S REPRESENTATIVE IS TO APPROVE ANY AND ALL SUBSTITUTIONS.
- FILTER FABRIC TO BE DEWITT PRO-S WEED CONTROL, OR EQUAL.
- PLANT QUANTITIES ARE PROVIDED FOR CONTRACTOR'S CONVENIENCE ONLY, PLANS SHALL TAKE PRECEDENCE.



CONSENSUS
Planning / Landscape Architecture
302 Eighth Street NW
Albuquerque, NM 87102
(505) 764-9801 Fax 842-5495
e-mail: cp@consensusplanning.com

CONSULTANTS



AMRI PUBLIC
SIDEWALKS
IMPROVEMENTS
ALBUQUERQUE, NM

DECEMBER 15, 2021

SUBMITTAL: AA

REVISIONS

NO.	DATE	DESCRIPTION
	3-23-2022	ADD SIGHT TRIANGLES

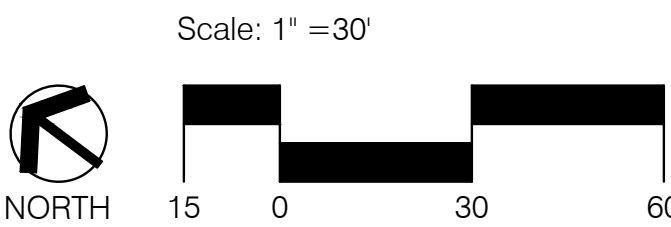
PROJECT NO: XXXX
CAD DWG FILE:
DESIGNED BY: KP
DRAWN BY: KP
CHECKED BY: CG

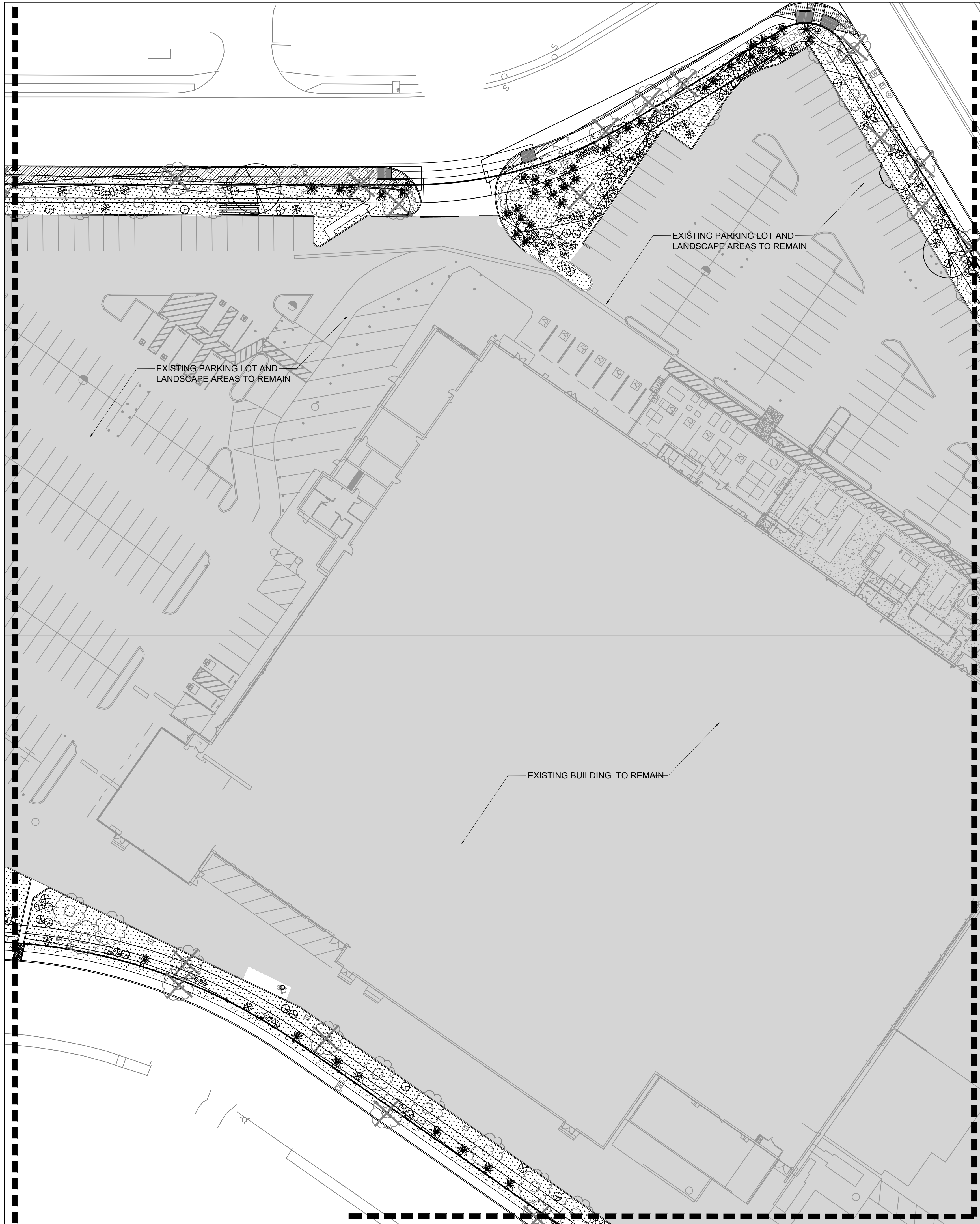
SHEET TITLE

LANDSCAPE
PLAN

DRAWING SHEET

L101





PLANT LEGEND			
SYMBOL	SCIENTIFIC NAME COMMON NAME (WATER USE)	SIZE	MATURE SIZE
TREES - REFERENCE DETAIL 1-2/L501			
	CHILOPSIS LINEARIS DESERT WILLOW 'BUBBA' (RW)	24"-BOX	20' HT. X 25' SPR.
	PISTACIA CHINENSIS CHINESE PISTACHE (M)	2.5" B&B	40' HT. X 30' SPR.
SHRUBS AND GROUNDCOVERS - REFERENCE DETAIL 3-4/L501			
	UPRIGHT GERMANDER TEUCRIUM CHAMAEDRYS (L)	1-GAL	2' HT. X 2' SPR.
	CYTISUS X PRAECOX 'ALL GOLD' ALL GOLD SCOTCH BROOM (L)	5-GAL	5' HT. X 5' SPR.
	FALLUGIA PARADOXA APACHE PLUME (L)	5-GAL	5' HT. X 5' SPR.
	JUNIPERUS HORIZONTALIS 'BLUE CHIP' BLUE CHIP JUNIPER (M)	5-GAL	8' HT. X 8' SPR.
	NANDINA DOMESTICA 'MONFAR' SIENNA SUNRISE HEAVENLY BAMBOO (M)	5-GAL	3' HT. X 2' SPR.
	BUDDLEJA DAVIDII 'NANHO BLUE' BUDDLEIA NANHO BLUE	5-GAL	5' HT. X 5' SPR.
MULCHES			
	1" AMARETTO BROWN CRUSHED GRAVEL MULCH AT 3" DEPTH OVER FILTER FABRIC		
	2"-4" COYOTE MIST COBBLE AT 4" DEPTH OVER FILTER FABRIC AT HEADER CURBS OR SLOPES GREATER THAN 4:1 PLACE 4-8" COYOTE MIST COBBLE AT 8" DEPTH OVER FILTER FABRIC		

EXISTING LANDSCAPE LEGEND	
SYMBOL	DESCRIPTION
	EXISTING TREES TO REMAIN WITHIN IMPROVEMENT AREA (AVERAGE SPREAD 25' FOR CALCULATIONS)
	EXISTING TREE TO BE REMOVED (DUE TO HEALTH OR LOCATION)
	EXISTING BUILDING, SITE AND LANDSCAPE TO REMAIN (EXISTING IRRIGATION TO REMAIN AND MUST BE PROVIDED TO EXISTING LANDSCAPE AREAS TO REMAIN)

- CITY SUBMITTAL NOTES
1. THE LANDSCAPE PLAN ON FILE FOR THIS SITE DEVELOPMENT PLAN WAS ILLEGIBLE. THE PLAN CHANGES WILL ONLY ADDRESS REMOVAL OF TREES LOCATED WITHIN THE NEW SIDEWALK IMPROVEMENT AND ALL OTHER EXISTING TREES WILL REMAIN. ALL EXISTING TURF GRASS HAS DIED AND WILL BE REPLACED WITH GRAVEL OR COBBLE OVER FILTER FABRIC. THE EXISTING SPRAY IRRIGATION SYSTEM WILL BE MODIFIED TO A DRIP SYSTEM.
 2. ADDITIONAL PLANTINGS WILL BE PLACED TO ENHANCE THE EXISTING LANDSCAPE AREAS.

- GENERAL NOTES
1. PRIOR TO BEGINNING WORK ON THE PROJECT, THE LANDSCAPE CONTRACTOR SHALL REVIEW THE PROJECT IN THE FIELD WITH THE OWNER'S REPRESENTATIVE. IF DISCREPANCIES OCCUR BETWEEN THE DRAWINGS AND THE SITE, THE LANDSCAPE CONTRACTOR SHALL NOTIFY THE OWNER'S REPRESENTATIVE FOR CLARIFICATION PRIOR TO PROCEEDING ON THAT PORTION OF WORK.
 2. IT IS THE LANDSCAPE CONTRACTOR'S RESPONSIBILITY TO LOCATE ALL UNDERGROUND UTILITIES PRIOR TO COMMENCEMENT OF PLANTING OPERATIONS.
 3. ALL PLANTING AREAS ARE TO HAVE WEEDS AND COMPETITIVE VEGETATION REMOVED PRIOR TO PREPARATION FOR PLANTING.
 4. THE OWNER'S REPRESENTATIVE SHALL APPROVE ALL PLANT MATERIAL PRIOR TO PLANTING. IN ADDITION, THE OWNER REPRESENTATIVE RESERVES THE RIGHT TO REFUSE ANY PLANT MATERIAL DEEMED UNACCEPTABLE. THE OWNER'S REPRESENTATIVE IS TO APPROVE ANY AND ALL SUBSTITUTIONS.
 5. FILTER FABRIC TO BE DEWITT PRO-S WEED CONTROL, OR EQUAL.
 6. PLANT QUANTITIES ARE PROVIDED FOR CONTRACTOR'S CONVENIENCE ONLY, PLANS SHALL TAKE PRECEDENCE.



CONSENSUS
Planning / Landscape Architecture
302 Eighth Street NW
Albuquerque, NM 87102
(505) 764-9801 Fax 842-5495
e-mail: cp@consensusplanning.com

CONSULTANTS



AMRI PUBLIC
SIDEWALKS
IMPROVEMENTS
ALBUQUERQUE, NM

DECEMBER 15, 2021

SUBMITTAL: AA

REVISIONS

NO.	DATE	DESCRIPTION
1	3-23-2022	ADD SIGHT TRIANGLES

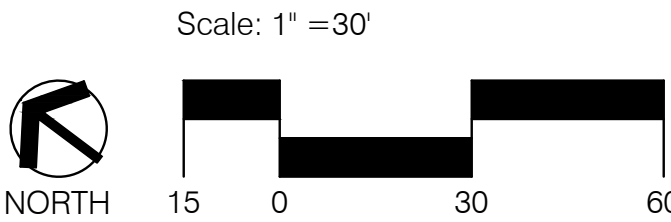
PROJECT NO: XXXX
CAD DWG FILE:
DESIGNED BY: KP
DRAWN BY: KP
CHECKED BY: CG

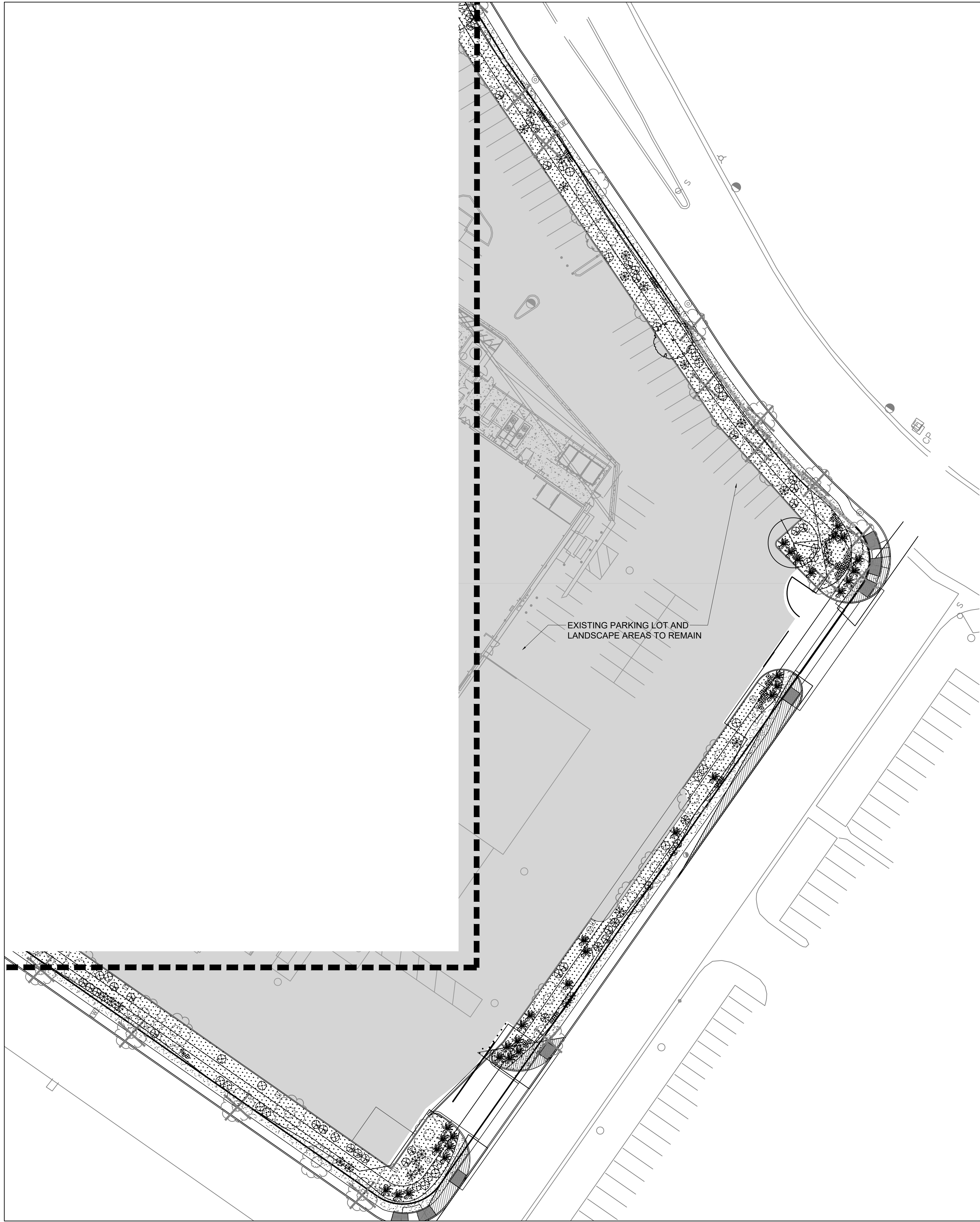
SHEET TITLE

LANDSCAPE
PLAN

DRAWING SHEET

L102





PLANT LEGEND			
SYMBOL	SCIENTIFIC NAME COMMON NAME (WATER USE)	SIZE	MATURE SIZE
TREES - REFERENCE DETAIL 1-2/L501			
	CHILOPSIS LINEARIS DESERT WILLOW 'BUBBA' (RW)	24"-BOX	20' HT. X 25' SPR.
	PISTACIA CHINENSIS CHINESE PISTACHE (M)	2.5" B&B	40' HT. X 30' SPR.
SHRUBS AND GROUNDCOVERS - REFERENCE DETAIL 3-4/L501			
	UPRIGHT GERMANDER TEUCRIUM CHAMAEDRYS (L)	1-GAL	2' HT. X 2' SPR.
	CYTISUS X PRAECOX 'ALL GOLD' ALL GOLD SCOTCH BROOM (L)	5-GAL	5' HT. X 5' SPR.
	FALLUGIA PARADOXA APACHE PLUME (L)	5-GAL	5' HT. X 5' SPR.
	JUNIPERUS HORIZONTALIS 'BLUE CHIP' BLUE CHIP JUNIPER (M)	5-GAL	8' HT. X 8' SPR.
	NANDINA DOMESTICA 'MONFAR' SIENNA SUNRISE HEAVENLY BAMBOO (M)	5-GAL	3' HT. X 2' SPR.
	BUDDLEJA DAVIDII 'NANHO BLUE' BUDDLEIA NANHO BLUE	5-GAL	5' HT. X 5' SPR.
MULCHES			
	1" AMARETTO BROWN CRUSHED GRAVEL MULCH AT 3" DEPTH OVER FILTER FABRIC		
	2"-4" COYOTE MIST COBBLE AT 4" DEPTH OVER FILTER FABRIC AT HEADER CURBS OR SLOPES GREATER THAN 4:1 PLACE 4-8" COYOTE MIST COBBLE AT 8" DEPTH OVER FILTER FABRIC		

EXISTING LANDSCAPE LEGEND	
SYMBOL	DESCRIPTION
	EXISTING TREES TO REMAIN WITHIN IMPROVEMENT AREA (AVERAGE SPREAD 25' FOR CALCULATIONS)
	EXISTING TREE TO BE REMOVED (DUE TO HEALTH OR LOCATION)
	EXISTING BUILDING, SITE AND LANDSCAPE TO REMAIN (EXISTING IRRIGATION TO REMAIN AND MUST BE PROVIDED TO EXISTING LANDSCAPE AREAS TO REMAIN)

- CITY SUBMITTAL NOTES
1. THE LANDSCAPE PLAN ON FILE FOR THIS SITE DEVELOPMENT PLAN WAS ILLEGIBLE. THE PLAN CHANGES WILL ONLY ADDRESS REMOVAL OF TREES LOCATED WITHIN THE NEW SIDEWALK IMPROVEMENT AND ALL OTHER EXISTING TREES WILL REMAIN. ALL EXISTING TURF GRASS HAS DIED AND WILL BE REPLACED WITH GRAVEL OR COBBLE OVER FILTER FABRIC. THE EXISTING SPRAY IRRIGATION SYSTEM WILL BE MODIFIED TO A DRIP SYSTEM.
 2. ADDITIONAL PLANTINGS WILL BE PLACED TO ENHANCE THE EXISTING LANDSCAPE AREAS.

- GENERAL NOTES
1. PRIOR TO BEGINNING WORK ON THE PROJECT, THE LANDSCAPE CONTRACTOR SHALL REVIEW THE PROJECT IN THE FIELD WITH THE OWNER'S REPRESENTATIVE. IF DISCREPANCIES OCCUR BETWEEN THE DRAWINGS AND THE SITE, THE LANDSCAPE CONTRACTOR SHALL NOTIFY THE OWNER'S REPRESENTATIVE FOR CLARIFICATION PRIOR TO PROCEEDING ON THAT PORTION OF WORK.
 2. IT IS THE LANDSCAPE CONTRACTOR'S RESPONSIBILITY TO LOCATE ALL UNDERGROUND UTILITIES PRIOR TO COMMENCEMENT OF PLANTING OPERATIONS.
 3. ALL PLANTING AREAS ARE TO HAVE WEEDS AND COMPETITIVE VEGETATION REMOVED PRIOR TO PREPARATION FOR PLANTING.
 4. THE OWNER'S REPRESENTATIVE SHALL APPROVE ALL PLANT MATERIAL PRIOR TO PLANTING. IN ADDITION, THE OWNER REPRESENTATIVE RESERVES THE RIGHT TO REFUSE ANY PLANT MATERIAL DEEMED UNACCEPTABLE. THE OWNER'S REPRESENTATIVE IS TO APPROVE ANY AND ALL SUBSTITUTIONS.
 5. FILTER FABRIC TO BE DEWITT PRO-S WEED CONTROL, OR EQUAL.
 6. PLANT QUANTITIES ARE PROVIDED FOR CONTRACTOR'S CONVENIENCE ONLY, PLANS SHALL TAKE PRECEDENCE.



CONSENSUS
Planning / Landscape Architecture
302 Eighth Street NW
Albuquerque, NM 87102
(505) 764-9801 Fax 842-5495
e-mail: cp@consensusplanning.com

CONSULTANTS



AMRI PUBLIC
SIDEWALKS
IMPROVEMENTS
ALBUQUERQUE, NM

DECEMBER 15, 2021

SUBMITTAL: AA

REVISIONS

NO.	DATE	DESCRIPTION
1	3-23-2022	ADD SIGHT TRIANGLES

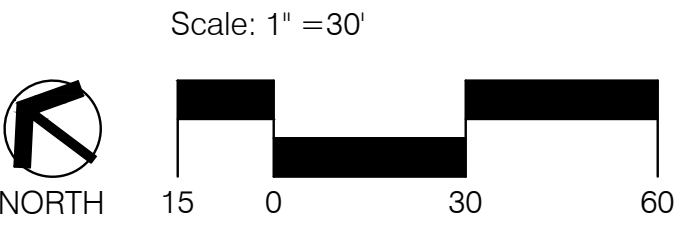
PROJECT NO: XXXX
CAD DWG FILE:
DESIGNED BY: KP
DRAWN BY: KP
CHECKED BY: CG

SHEET TITLE

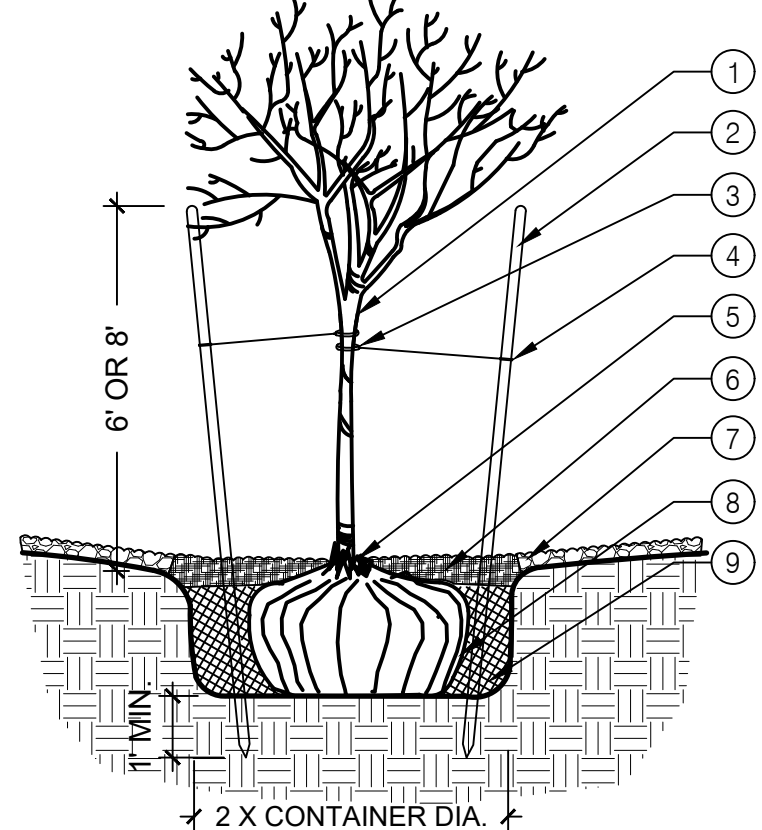
LANDSCAPE
PLAN

DRAWING SHEET

L103

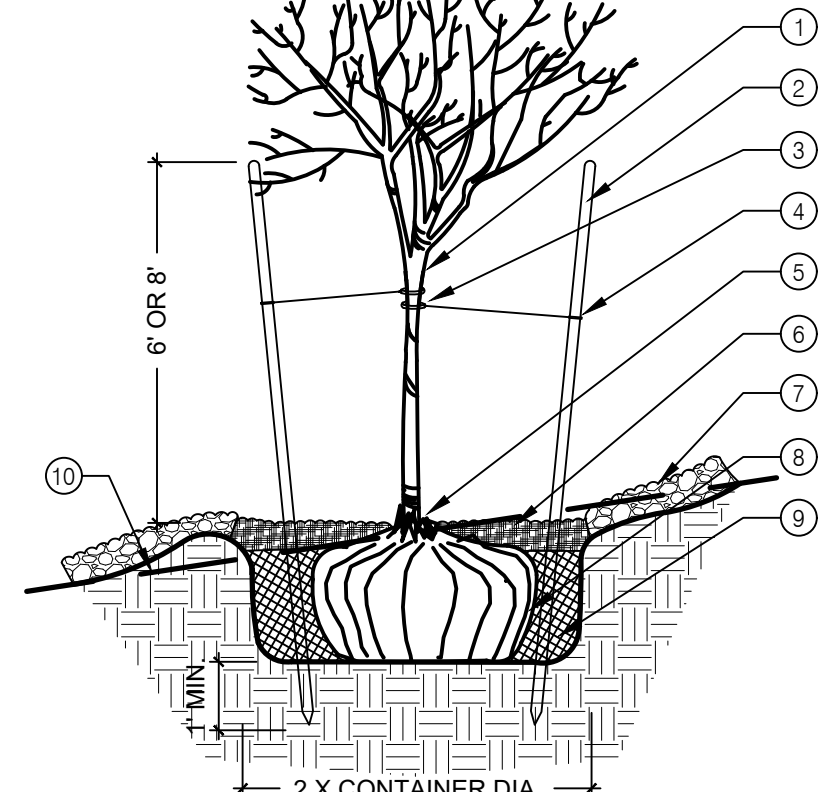


1. STRESS POINT OF TREE
2. 8' OR 10' LODGEPOLE STAKES DRIVEN AT ANGLE (8' FOR MULTI OR CANOPY, 10' FOR TALL COLUMNAR)
3. 5/8" BLACK POLY TUBING, 12"-15" LONG MIN., NOTCH BACKSIDE OF POLY TUBING
4. #10 PLASTIC COATED GUYWIRE - (WRAP TWICE AROUND STAKE)
5. PLANT TREE ROOT COLLAR 1"-2" ABOVE FINISH GRADE
6. WATER RETENTION BASIN - 3" DEPTH SHREDDED BARK MULCH. THE WATER RETENTION BASIN SHALL BE TWICE THE PLANTING PIT DIAMETER. THE EDGES OF THE WATER RETENTION BASIN SHALL BE SMOOTHLY FORMED WITH NO OBTRUSIVE EDGES
7. 3" LAYER OF ROCK MULCH - SEE PLANTING PLAN
8. ROOTBALL WITH REMOVE ROPE AND BURLAP AFTER PLANTING
9. SPECIFIED PLANTING MIX - WATER AND TAMP TO REMOVE AIR POCKETS



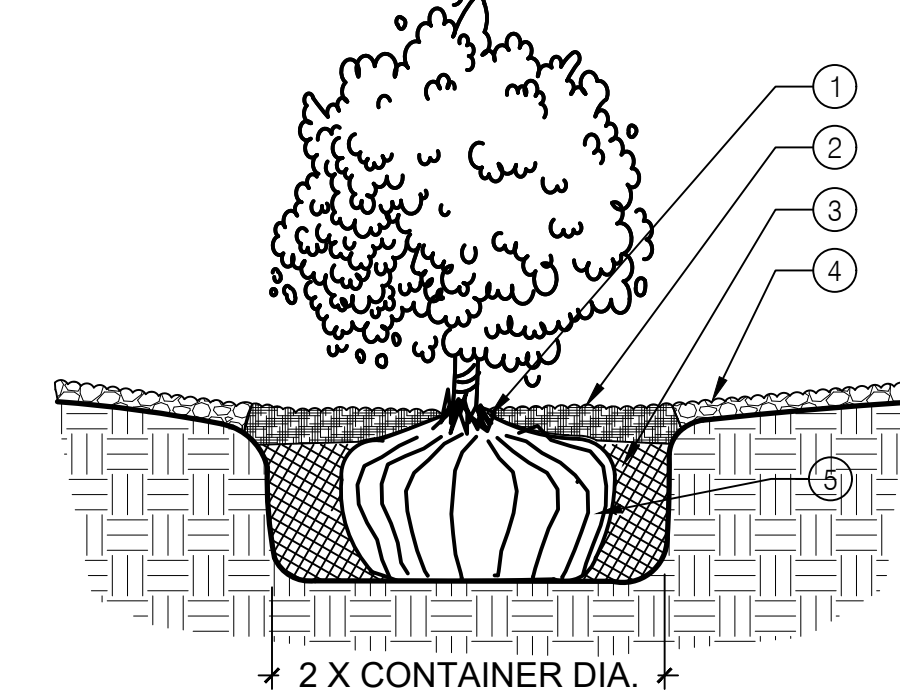
1 TREE PLANTING
SCALE: N.T.S.

1. STRESS POINT OF TREE
2. 8' OR 10' LODGEPOLE STAKES DRIVEN AT ANGLE (8' FOR MULTI OR CANOPY, 10' FOR TALL COLUMNAR)
3. 5/8" BLACK POLY TUBING, 12"-15" LONG MIN., NOTCH BACKSIDE OF POLY TUBING
4. #10 PLASTIC COATED GUYWIRE - (WRAP TWICE AROUND STAKE)
5. PLANT TREE ROOT COLLAR 1"-2" ABOVE FINISH GRADE
6. WATER RETENTION BASIN - 3" DEPTH SHREDDED BARK MULCH. THE WATER RETENTION BASIN SHALL BE TWICE THE PLANTING PIT DIAMETER. THE EDGES OF THE WATER RETENTION BASIN SHALL BE SMOOTHLY FORMED WITH NO OBTRUSIVE EDGES
7. 3" LAYER OF ROCK MULCH - SEE PLANTING PLAN
8. ROOTBALL WITH REMOVE ROPE AND BURLAP AFTER PLANTING
9. SPECIFIED PLANTING MIX - WATER AND TAMP TO REMOVE AIR POCKETS
10. FINISH GRADE



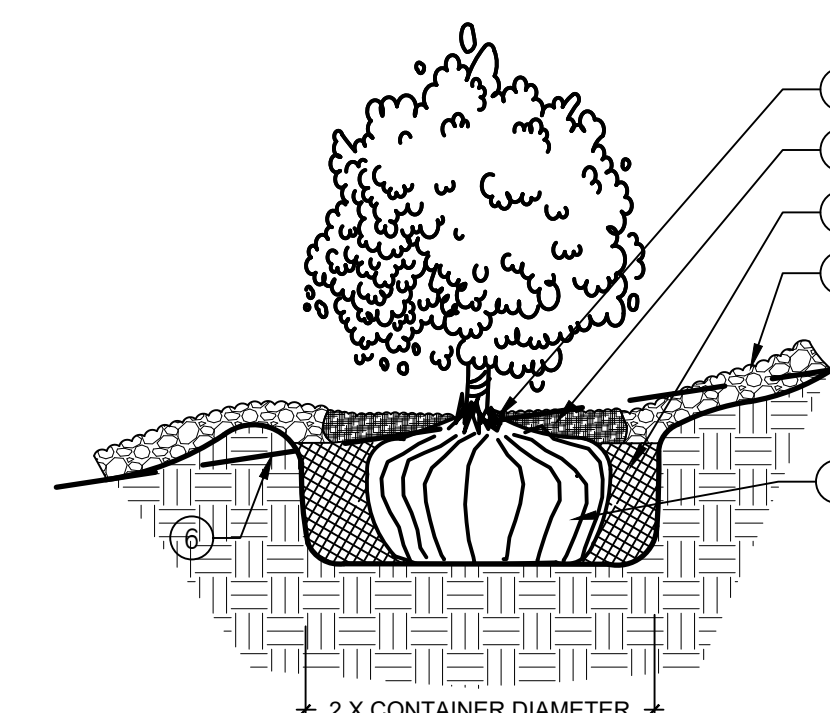
2 TREE PLANTING ON A SLOPE
SCALE: N.T.S.

1. PLANT TREE ROOT COLLAR 1"-2" ABOVE FINISH GRADE
2. WATER RETENTION BASIN - 3" LAYER OF SHREDDED BARK MULCH. THE WATER RETENTION BASIN SHALL BE TWICE THE PLANTING PIT DIAMETER. THE EDGES OF THE WATER RETENTION BASIN SHALL BE SMOOTHLY FORMED WITH NO OBTRUSIVE EDGES.
3. SPECIFIED PLANTING MIX - WATER AND TAMP TO REMOVE AIR POCKETS
4. 3" LAYER OF ROCK MULCH - SEE PLANTING PLAN
5. ROOTBALL



3 SHRUB PLANTING
SCALE: N.T.S.

1. PLANT TREE ROOT COLLAR 1"-2" ABOVE FINISH GRADE
2. 4" WATER RETENTION BASIN - 3" LAYER OF SHREDDED BARK MULCH. THE WATER RETENTION BASIN SHALL BE TWICE THE PLANTING PIT DIAMETER. THE EDGES OF THE WATER RETENTION BASIN SHALL BE SMOOTHLY FORMED WITH NO OBTRUSIVE EDGES
3. SPECIFIED PLANTING MIX - WATER AND TAMP TO REMOVE AIR POCKETS
4. 3" LAYER OF ROCK MULCH - SEE PLANTING PLAN
5. ROOTBALL
6. FINISH GRADE



4 SHRUB PLANTING ON A SLOPE
SCALE: N.T.S.



CONSENSUS
Planning / Landscape Architecture
302 Eighth Street NW
Albuquerque, NM 87102
(505) 764-9801 Fax 842-5495
e-mail: cp@consensusplanning.com

CONSULTANTS



AMRI PUBLIC SIDEWALKS IMPROVEMENTS ALBUQUERQUE, NM

DECEMBER 15, 2021

SUBMITTAL: AA

REVISIONS

NO.	DATE	DESCRIPTION
1	3-23-2022	ADD SIGHT TRIANGLES

PROJECT NO: XXXX

CAD DWG FILE:

DESIGNED BY: KP

DRAWN BY: KP

CHECKED BY: CG

SHEET TITLE

LANDSCAPE DETAILS

DRAWING SHEET

L501