

ADMINISTRATIVE AMENDMENT

FILE #: _____ PROJECT #: _____

APPROVED BY

DATE

DEMOLITION NOTES

- REMOVE EXTERIOR TENANT SIGNS. COORDINATE REMOVAL WITH WALMART CM AND TENANT PRIOR TO BEGINNING WORK. DELIVER REMOVED TENANT SIGNS TO TENANT.
- REMOVAL OF BUILDING MOUNTED ITEMS, SHOWN OR NOTED TO BE DEMOLISHED OR AS REQUIRED BY SCOPE OF WORK, SHALL OCCUR PRIOR TO PAINTING BUILDING. COORDINATE DEMOLITION WORK SO EXTERIOR PAINTING WILL OCCUR PRIOR TO INSTALLATION OF BUILDING MOUNTED ITEMS.

COLOR LEGEND

PKT	COLOR NAME
P5E	SAFETY YELLOW
P33E	CREAM
P49E	DARK GRAY
P76U	WALMART BLUE
P134E	LIGHT GRAY
P135E	MEDIUM GRAY
P182E	BLACK GRAY
P200	DURANODIC BRONZE SW#7248

SHEET NOTES

- PATCH AND REPAIR EXTERIOR WALL SURFACES, DAMAGED OR EXPOSED DUE TO REMOVAL OF BUILDING MOUNTED ITEMS. TO MATCH ADJACENT AS REQUIRED. REFER TO DETAILS ON SHEET A2.1 FOR SUBSTRATE AND FINISH REQUIREMENTS AT LOCATIONS OF BUILDING MOUNTED SIGNS.
- RESURFACE EXISTING EIFS WHERE SHOWN (HATCHED AREA).
- PRIOR TO PAINTING WALL AT LOCATION(S) OF LIT (ID LOGO SIGNS), COORDINATE SCOPE OF WORK WITH WALMART CM.
- IF PAINTING ADJACENT WALLS PAINT HOLLOW METAL STEEL DOORS, FRAMES, AND DOWNSPOUTS, EXPOSED METAL FLASHING, HANDRAILS, AND EXPOSED MISCELLANEOUS STEEL TO MATCH ADJACENT BUILDING COLOR (ING).
- PAINT ANY ROOFTOP GAS PIPING (P5E) WHERE EXTERIOR WALL IS BEING PAINTED. GAS PIPE ALONG SIDE WALL TO GRADE SHOULD MATCH ADJACENT BUILDING. DO NOT PAINT METER OR VALVES.
- IF PAINTING ADJACENT WALLS PAINT CANOPY STRUCTURAL STEEL AND FLASHING TO MATCH ADJACENT WALL.
- WHERE CANOPIES ARE VISIBLE TO AND ACCESSED BY CUSTOMERS, PAINT UNDERSIDE OF CANOPY DECK (P33E) DO NOT PAINT CANOPY DECK IF NOT PREVIOUSLY PAINTED.
- PAINT ALL EXTERIOR ENTRY BOLLARDS TO MATCH EXISTING COLOR UNLESS NOTED TO RECEIVE PLASTIC BOLLARD SLEEVE.
- PAINT SECURITY WALL PACK HOUSINGS TO MATCH ADJACENT WALL. REMOVE PAINT OVERSPRAY FROM LENSES.
- DO NOT PAINT LED WALL PACK HOUSINGS.
- DO NOT PAINT QUIK BRIK, STONE VENEER, FACE BRICK, UNPAINTED TILT-WALL OR PRECAST PANELS.
- AT MASONRY LOCATIONS WHERE SIGNS ARE BEING REPLACED, REMOVE AND PAINT AREA BEHIND SIGN TO MATCH EXISTING COLOR. REF SPEC 09900.

SGA Design Group, P.C.
 1437 South Boulder, Suite 550
 Tulsa, Oklahoma 74119
 T: 918.587.8600
 F: 918.587.8601
 www.sgaesigngroup.com

THIS DRAWING IS INTENDED FOR THE USE OF THE ARCHITECT ONLY. THE ARCHITECT SHALL BE RESPONSIBLE FOR THE ACCURACY AND COMPLETENESS OF THE DRAWING. THE ARCHITECT SHALL NOT BE RESPONSIBLE FOR THE CONSTRUCTION OF THE PROJECT OR THE PERFORMANCE OF THE CONTRACTOR. THE ARCHITECT SHALL NOT BE RESPONSIBLE FOR THE DESIGN OF ANY STRUCTURES OR EQUIPMENT NOT SHOWN ON THIS DRAWING.

CONSULTANTS

Walmart
ALBUQUERQUE, NM
 400 EBANK BLVD NE
 STORE NO: B55-275
 JOB NUMBER: 21894016 | PHOTO: 192

2022 MAJOR PROJECT

ISSUE BLOCK

CHECKED BY: TRH RO/AVT

DRAWN BY: KFB

PROTO CYCLE: 02/25/22

DOCUMENT DATE: 04/27/22

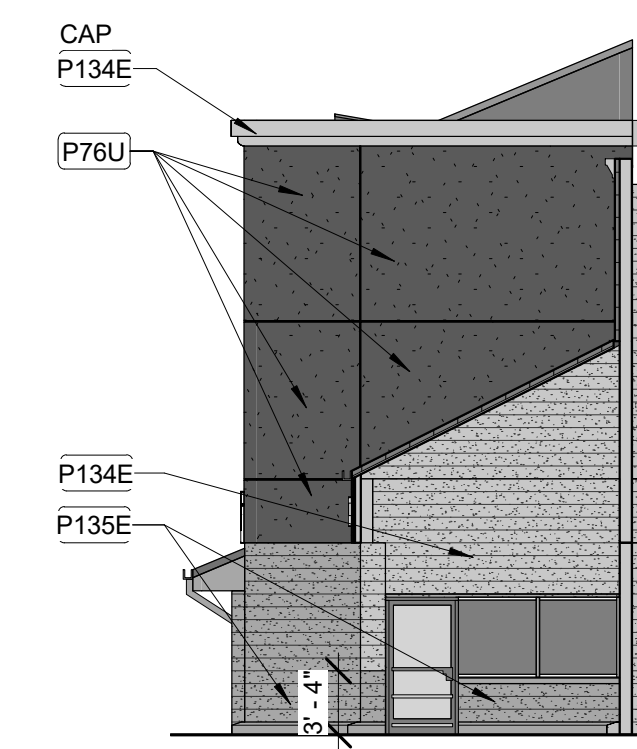
THE RECORD COPY OF THIS DRAWING IS ON FILE AT THE OFFICES OF SGA DESIGN GROUP. THIS ELECTRONIC DOCUMENT IS RELEASED FOR THE PURPOSE OF REFERENCE, COORDINATION AND/OR FACILITY MANAGEMENT. THIS DRAWING SHALL NOT BE CONSIDERED FINAL OR COMPLETE UNLESS IT IS SIGNED AND SEALED BY THE ARCHITECT.

STATE OF NEW MEXICO
 TRAVIS R. HAGER
 No. 6148
 REGISTERED ARCHITECT
 04/27/2022

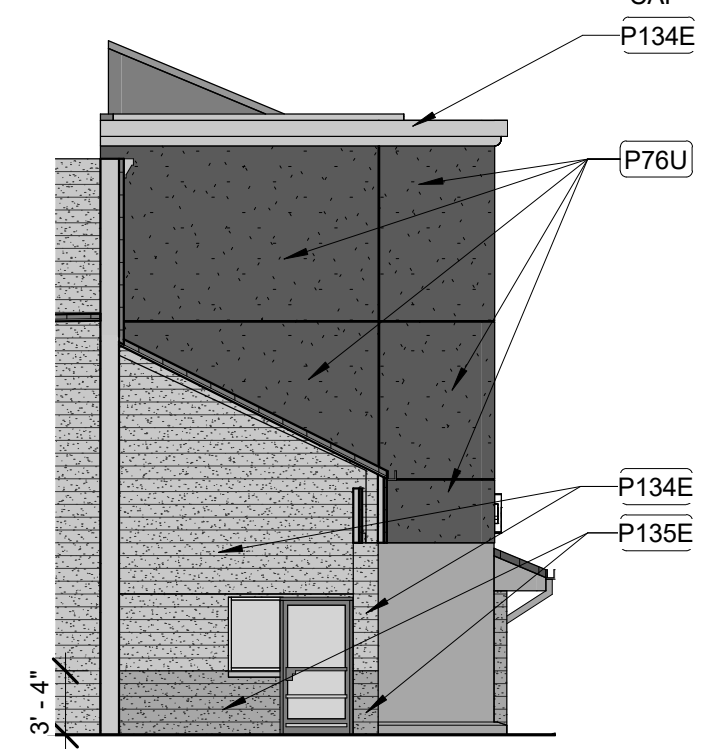
EXTERIOR ELEVATIONS

SHEET:

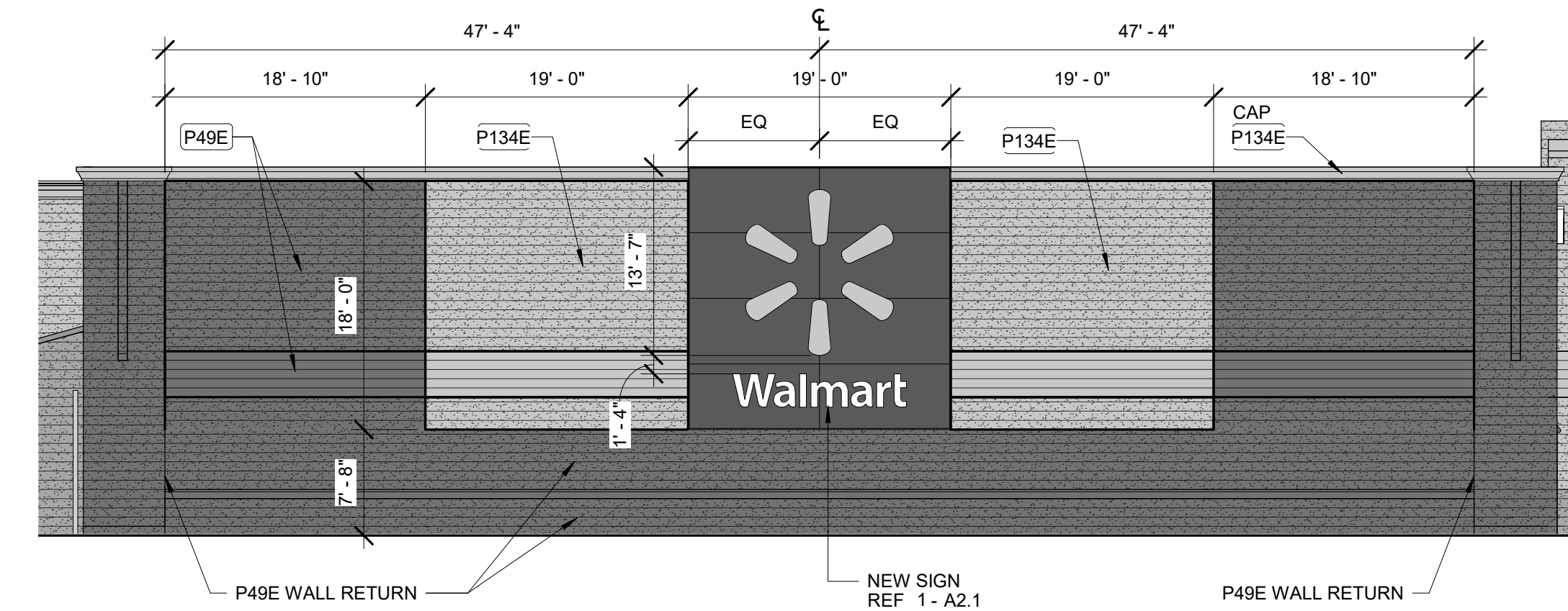
A2



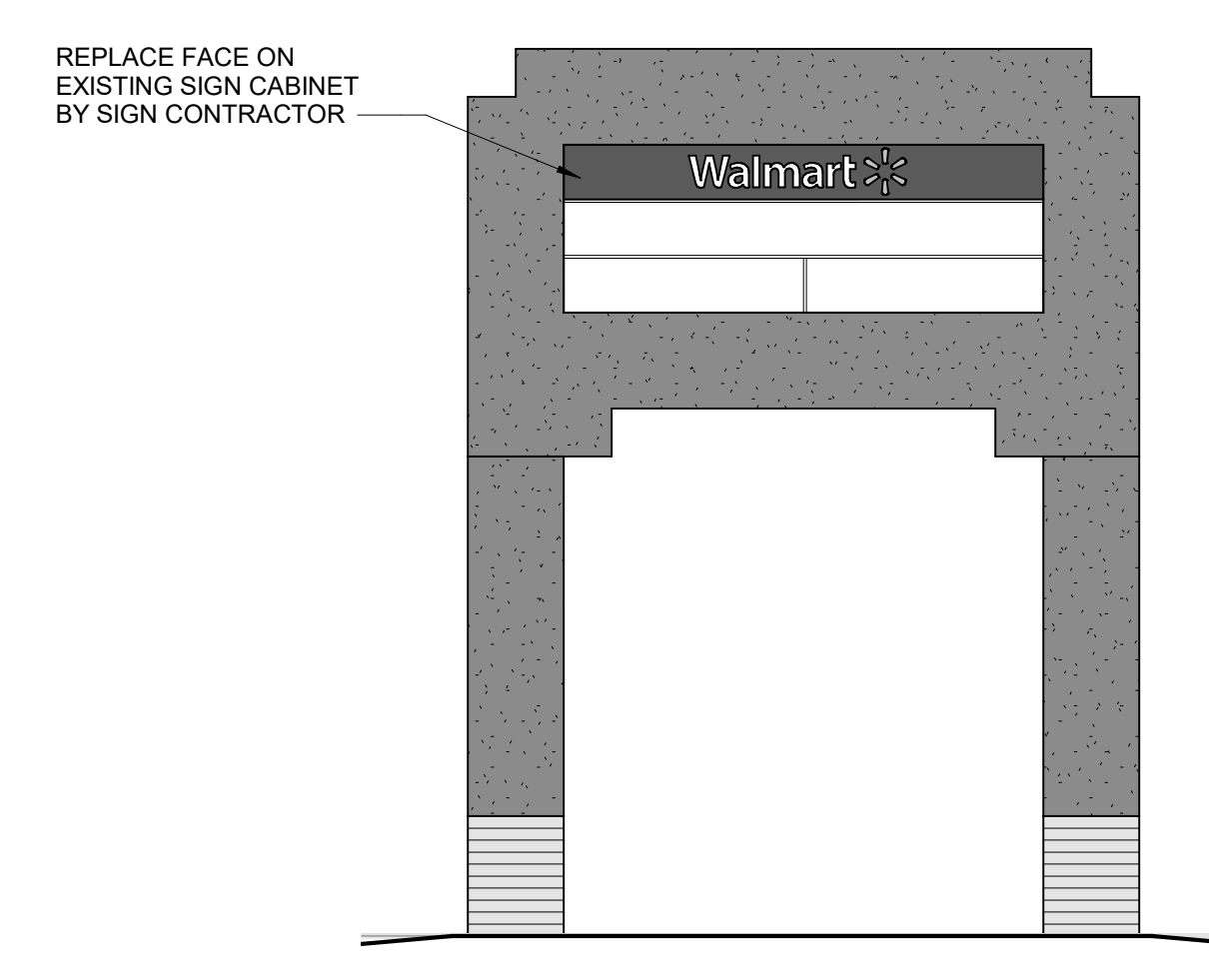
8 GM VESTIBULE SIDE ELEVATION
 1" = 10'-0"



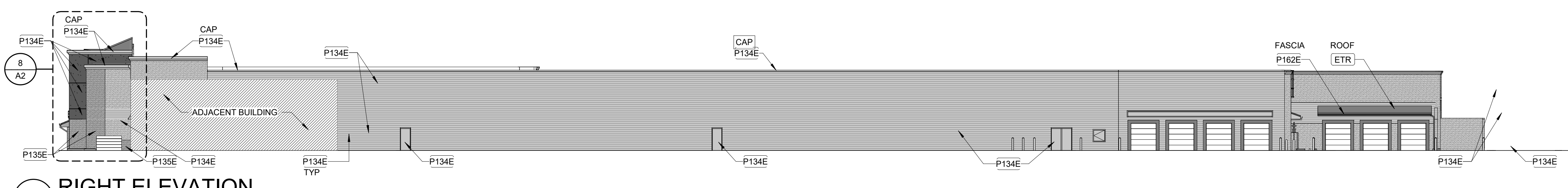
7 GR VESTIBULE SIDE ELEVATION
 1" = 10'-0"



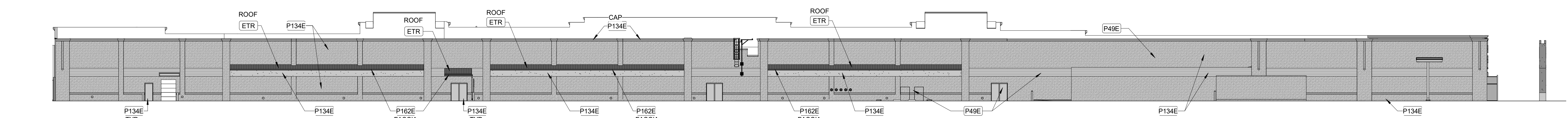
6 LEFT ELEVATION - ENLARGED SIGNAGE
 1" = 10'-0"



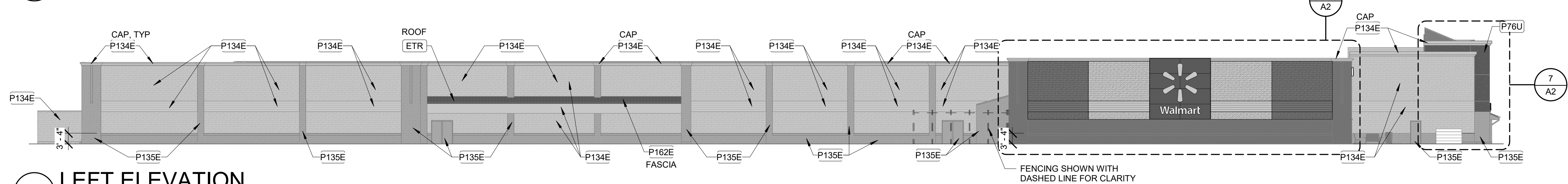
5 EXISTING FREESTANDING SIGN
 3/16" = 1'-0"



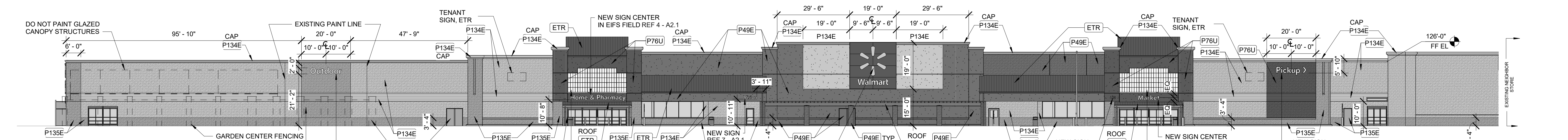
4 RIGHT ELEVATION
 1" = 20'-0"



3 REAR ELEVATION
 1" = 20'-0"



2 LEFT ELEVATION
 1" = 20'-0"



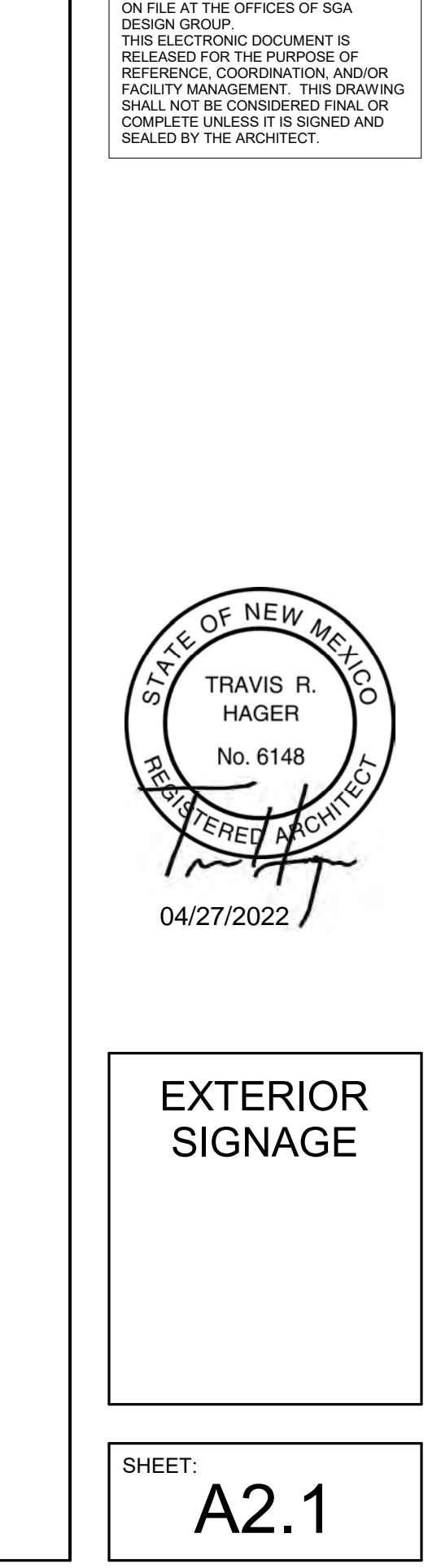
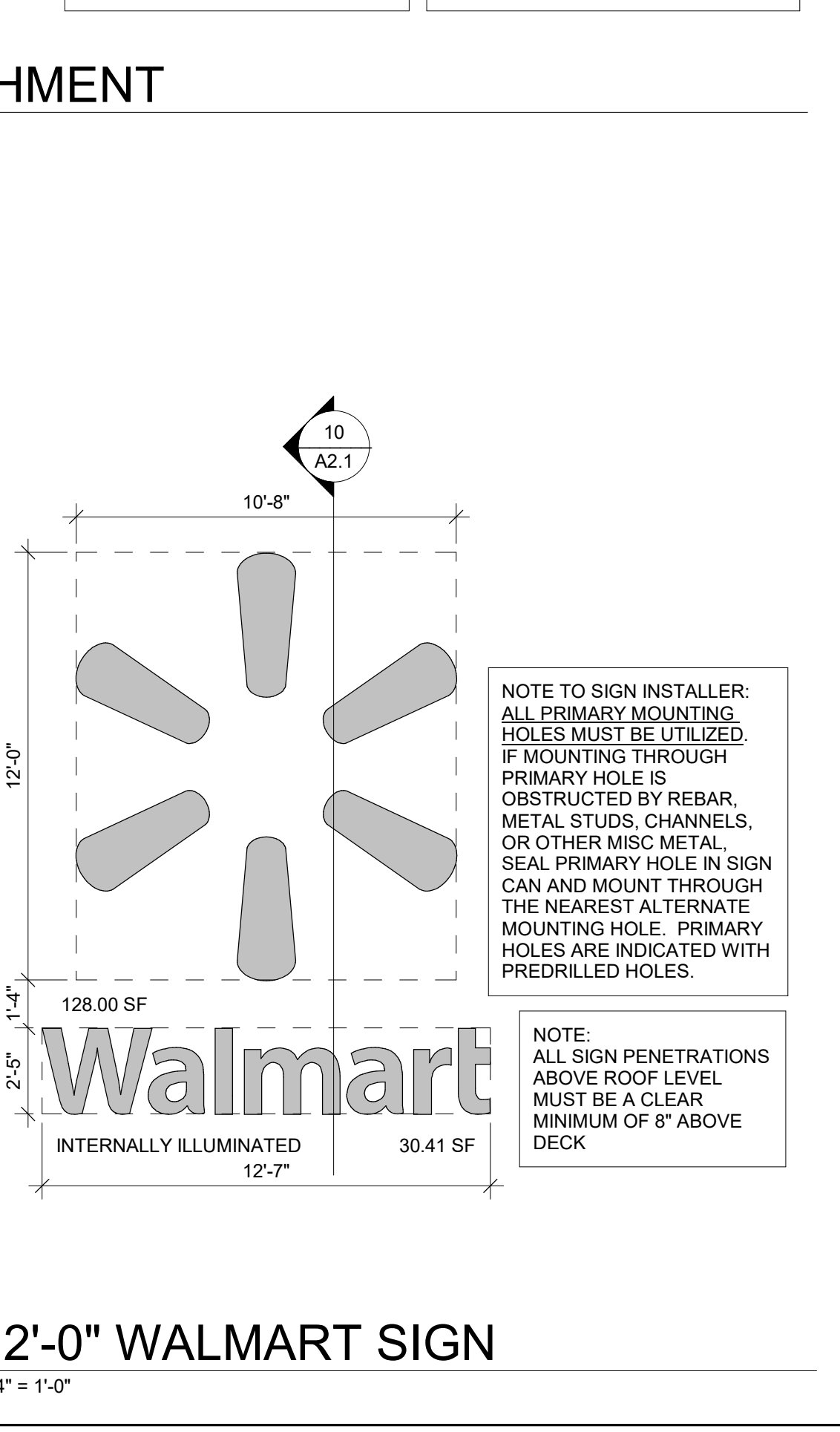
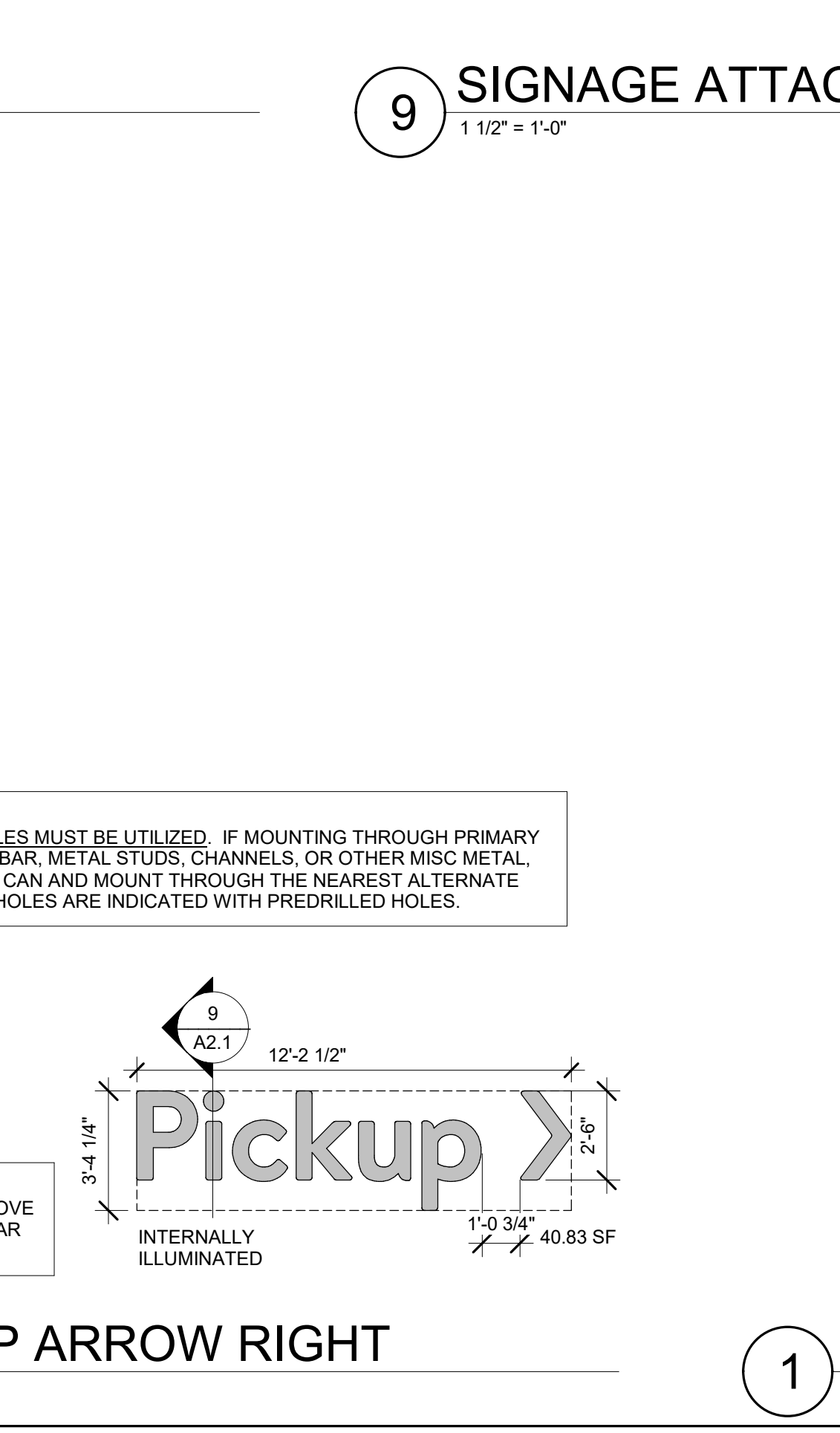
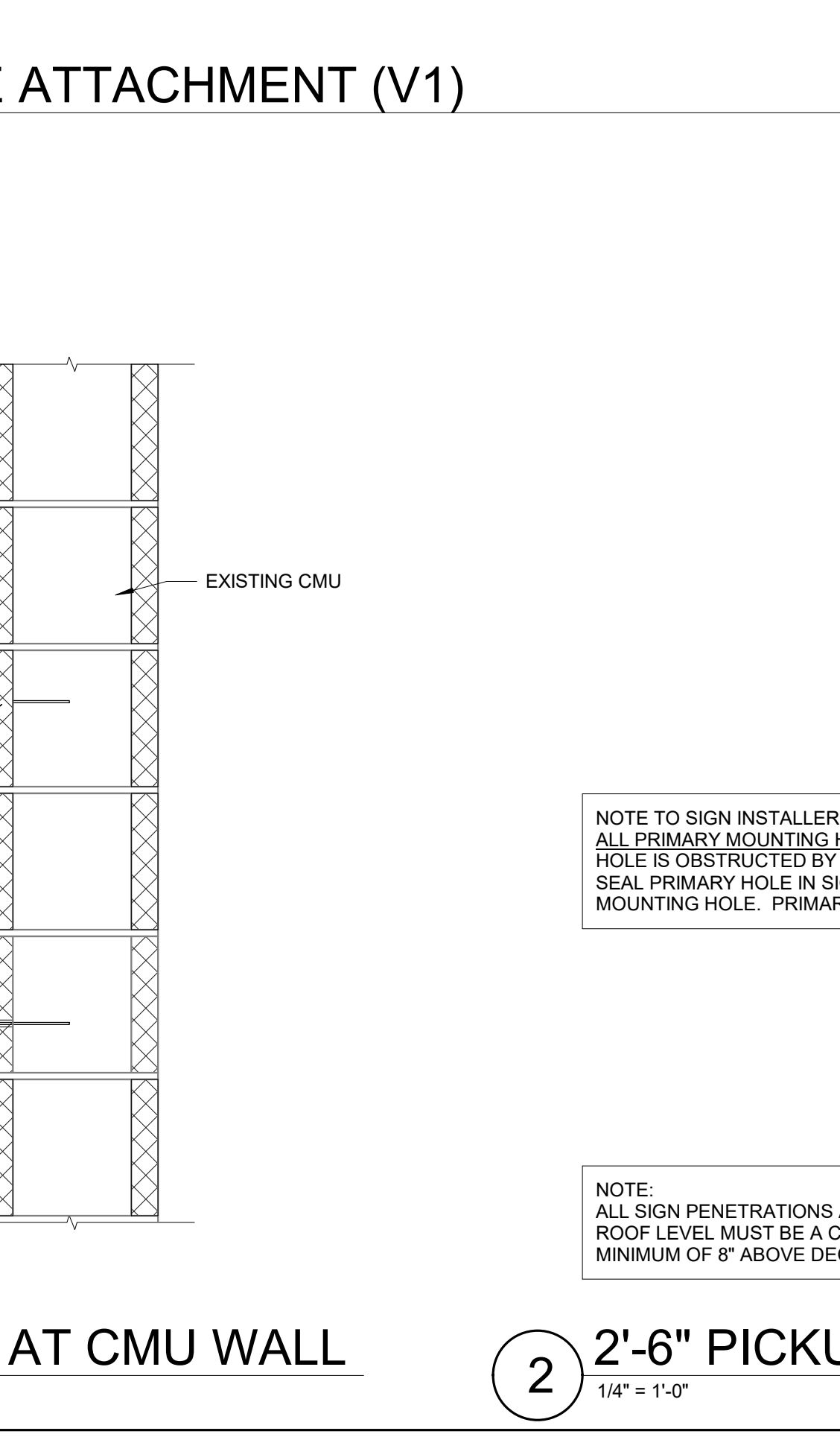
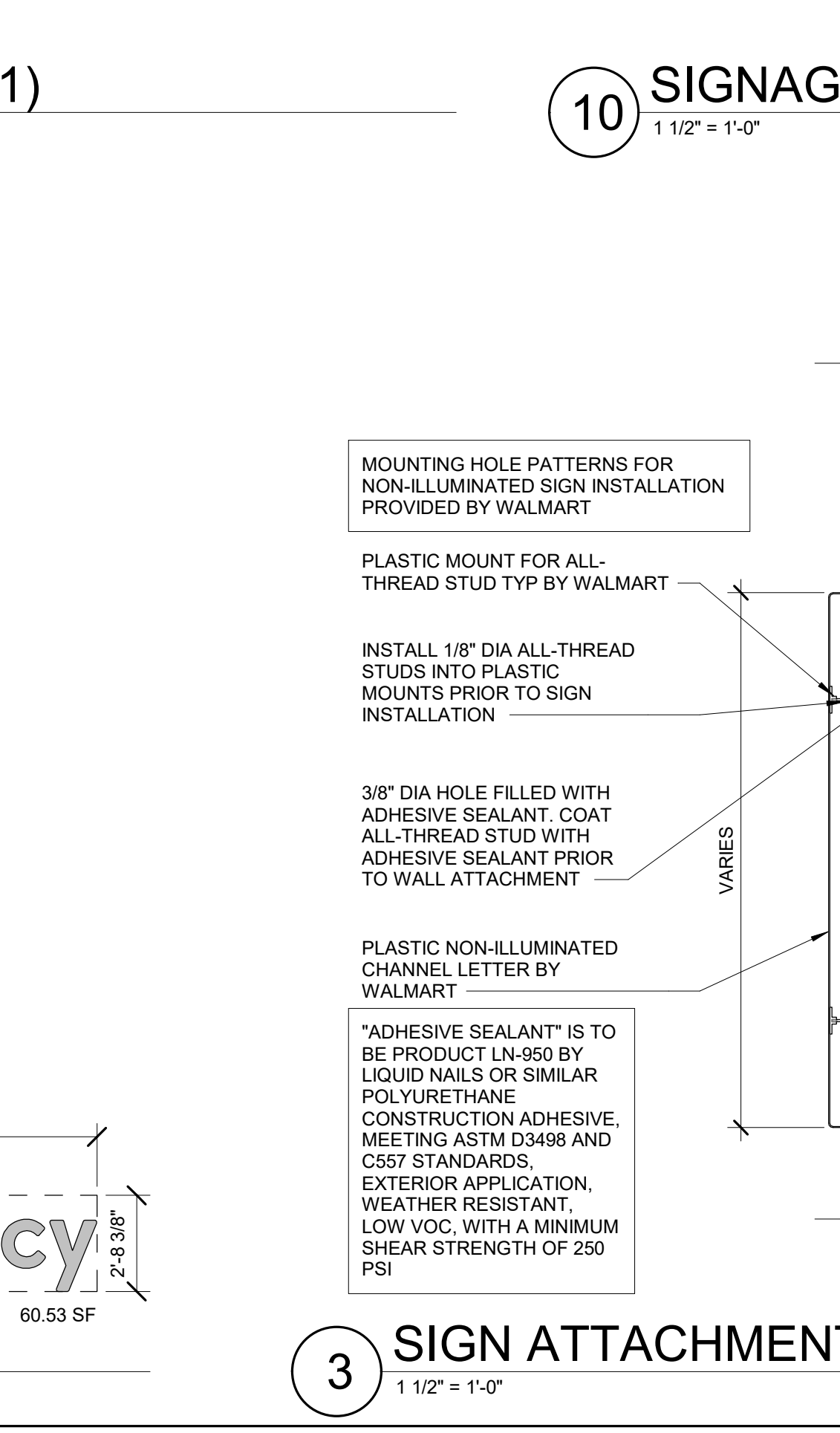
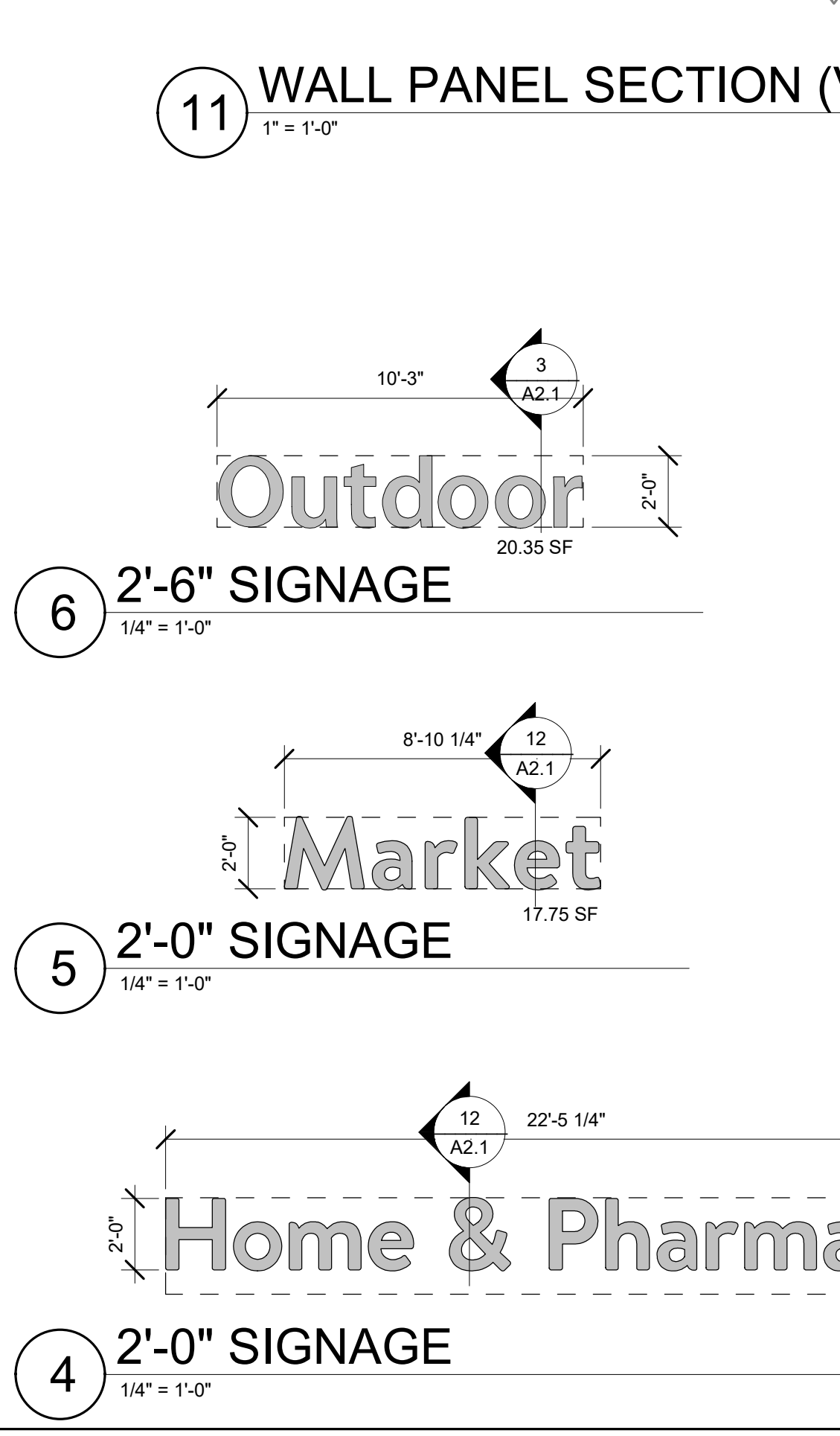
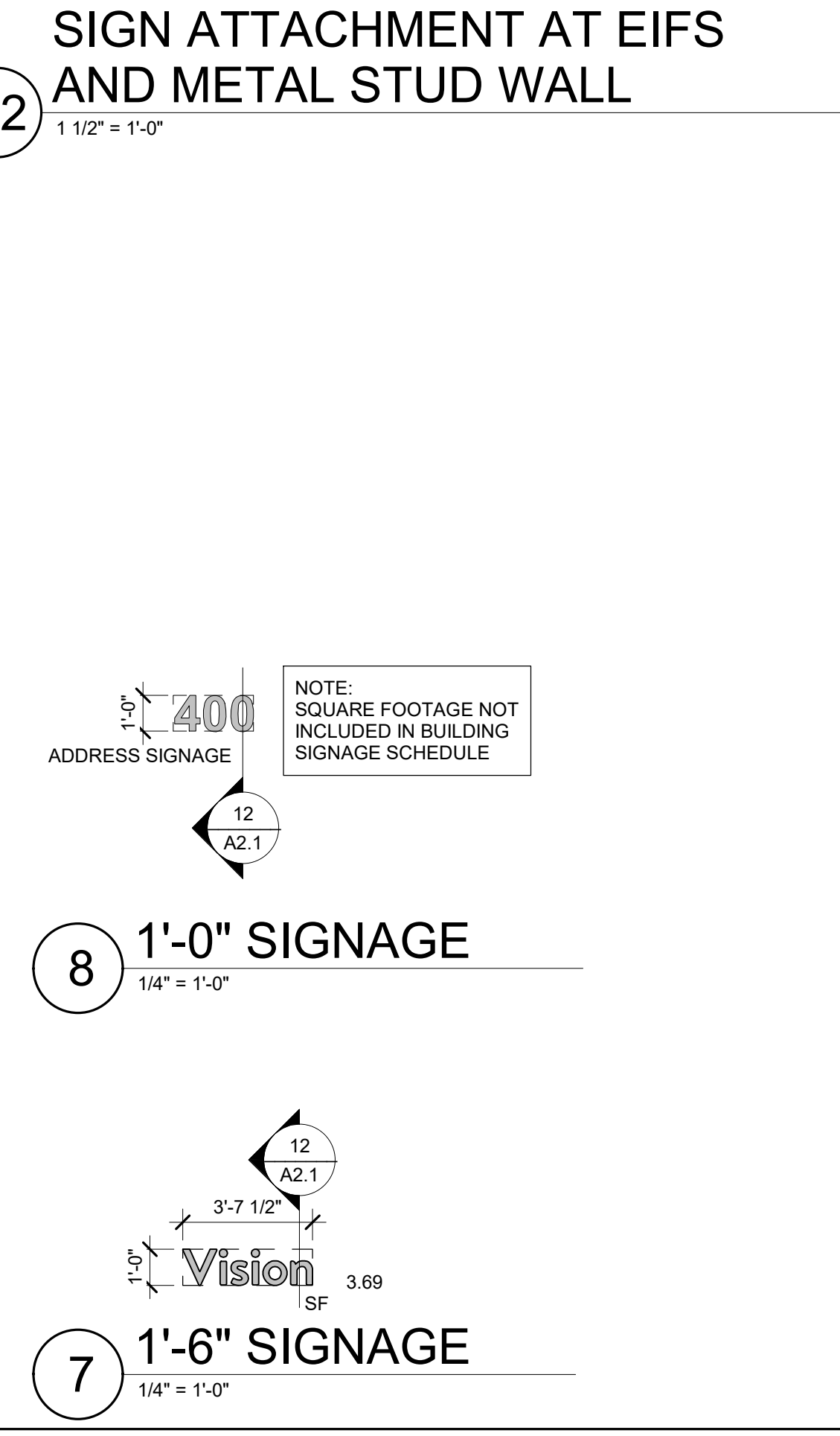
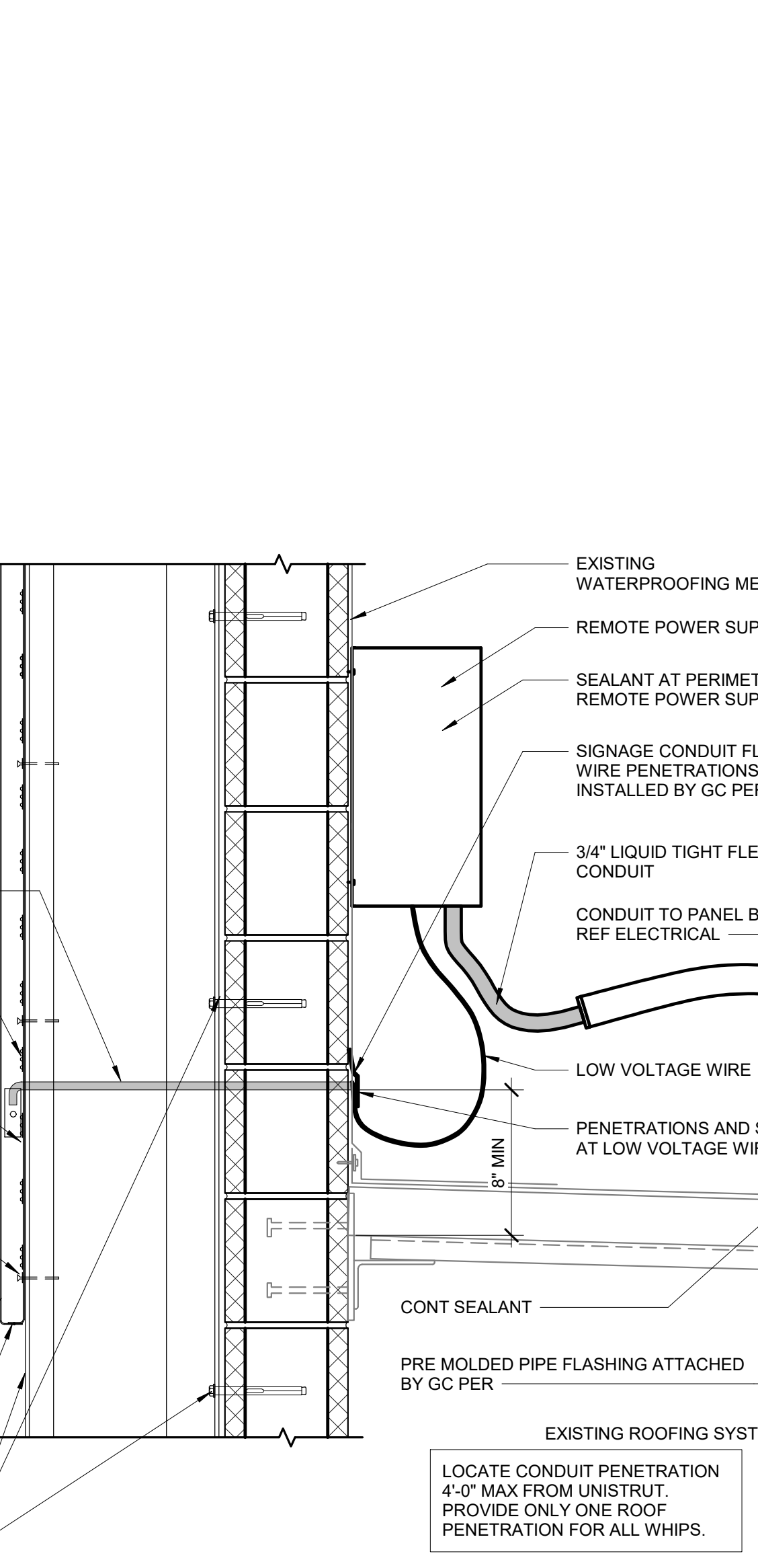
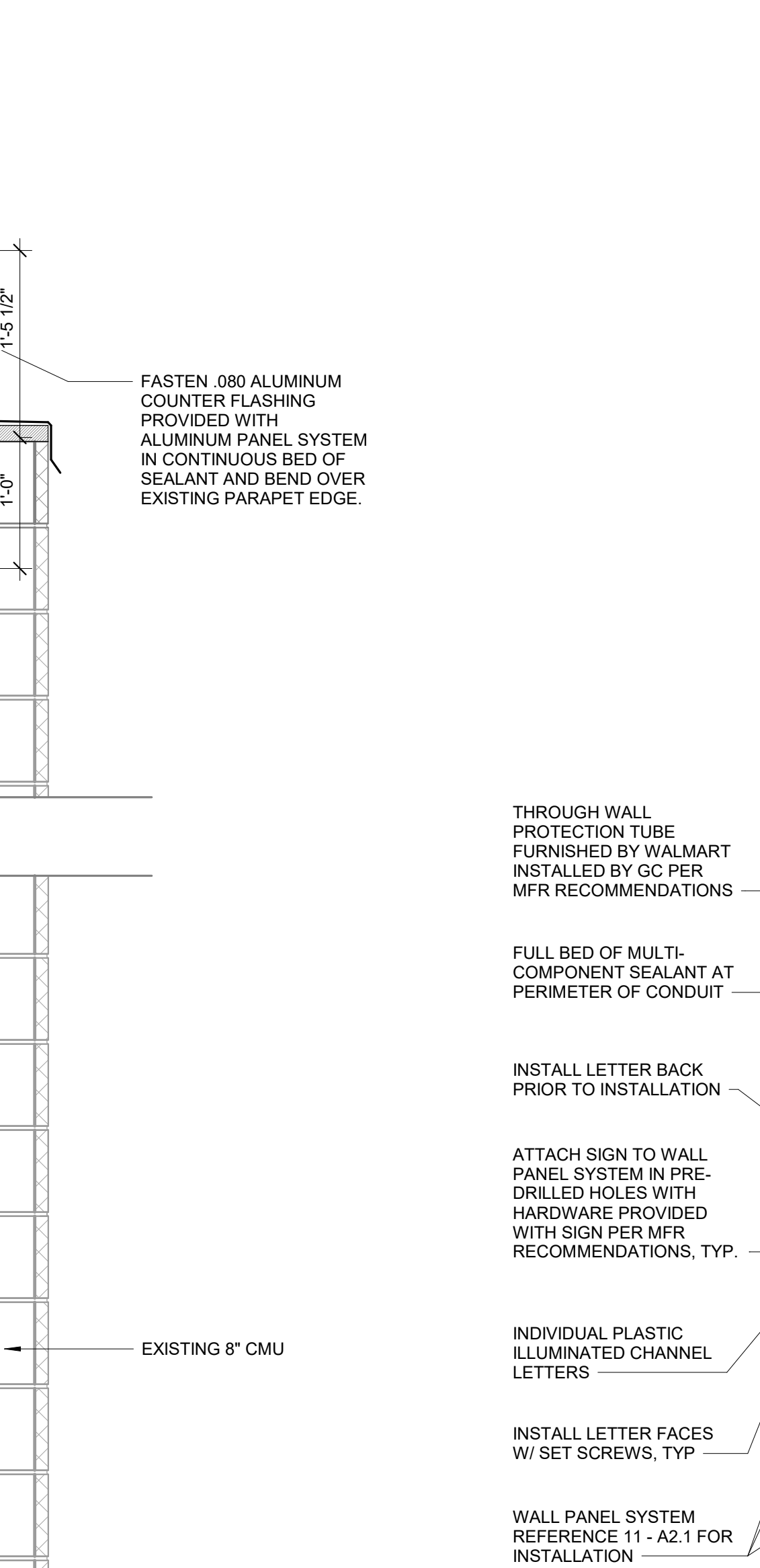
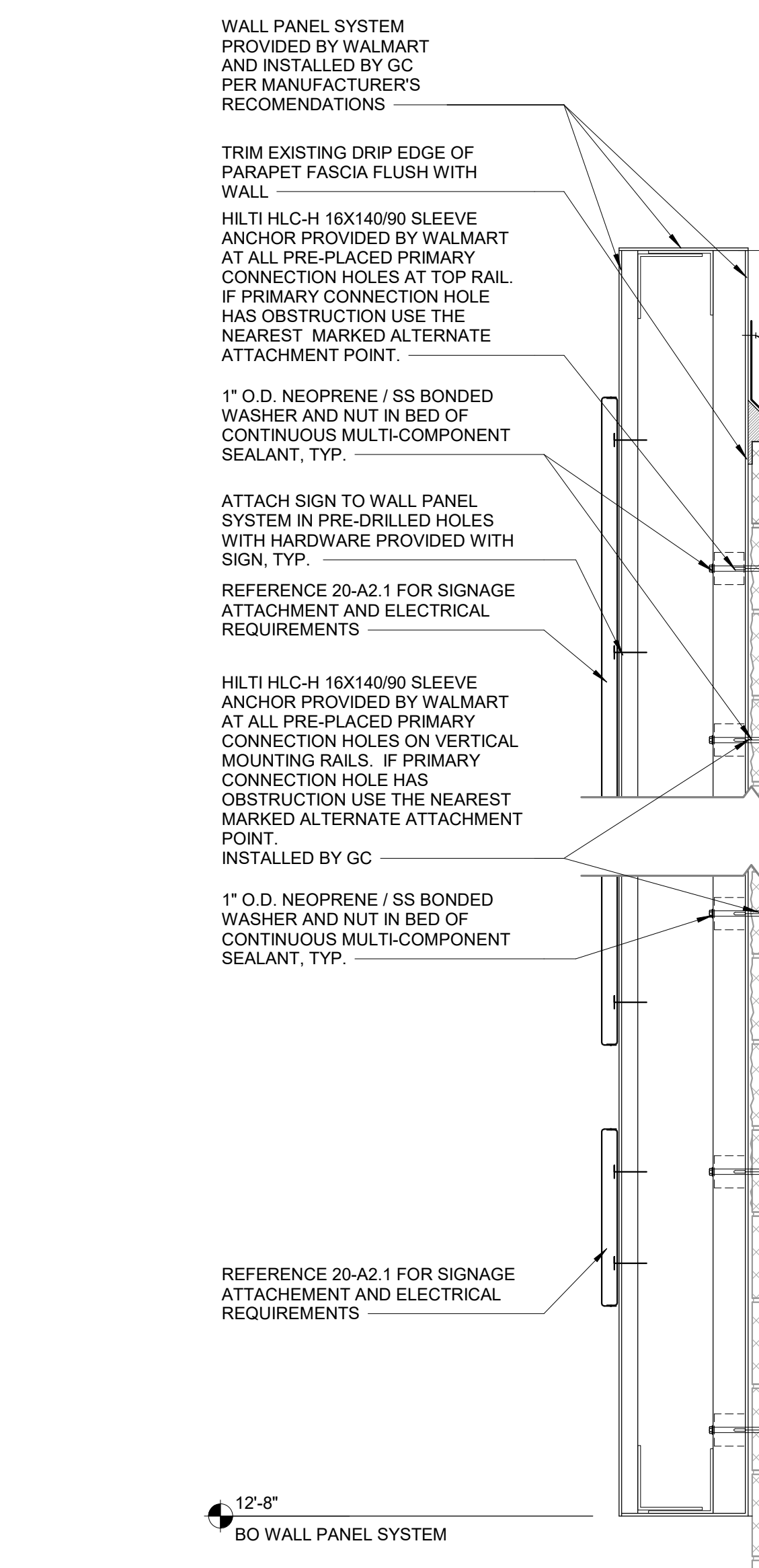
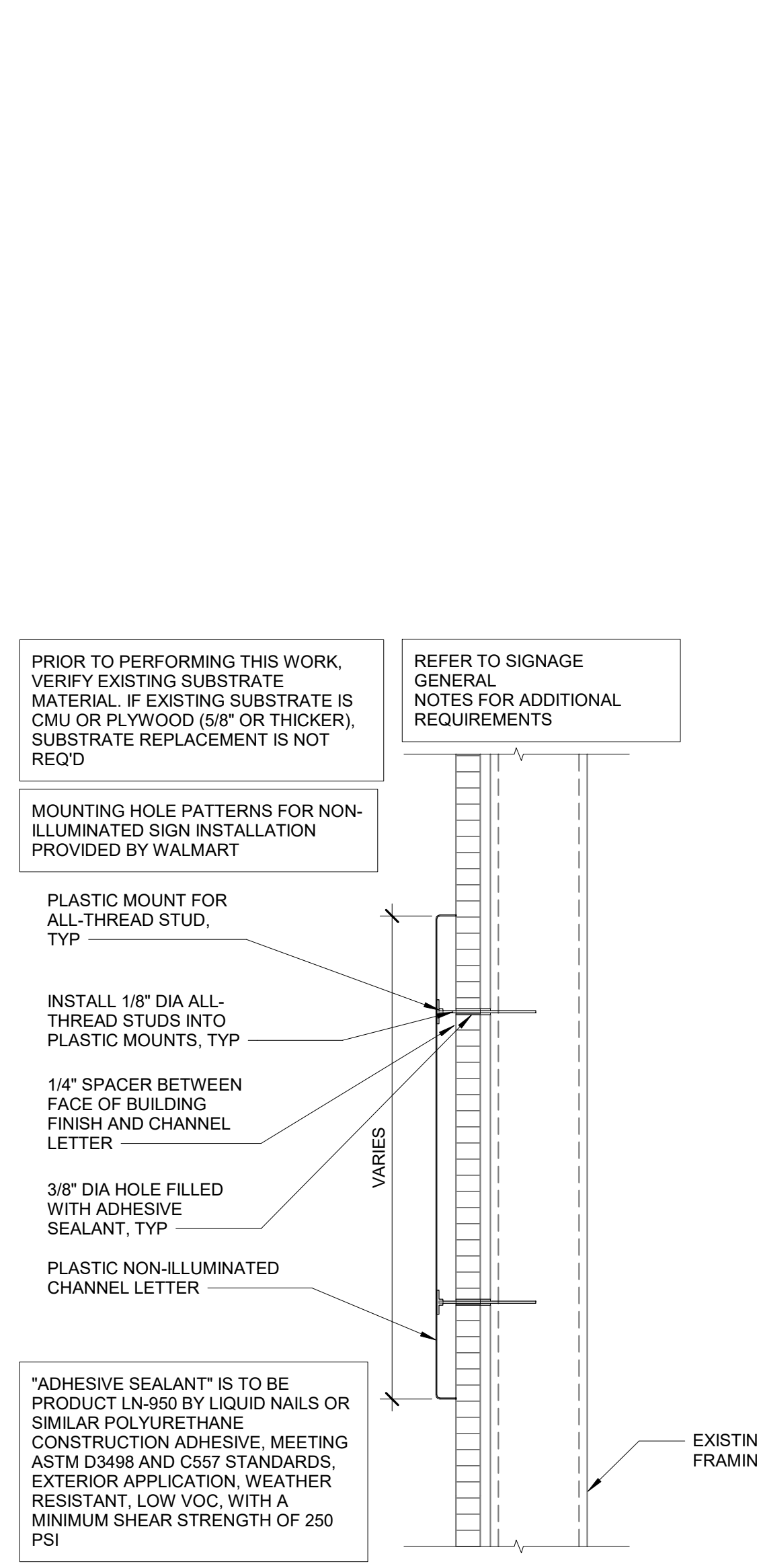
1 FRONT ELEVATION
 1" = 20'-0"

NEW SIGNAGE SCHEDULE						
SIGNAGE LOCATION	QTY	LIGHTED	COLOR	SIZE	AREA (SF)	TOTAL AREA (SF)
FRONT SIGNAGE						
Walmart Spark	1	LED	WHITE/YELLOW	12'-0"	158.41 SF	158.41 SF
Outdoor	1	NO	WHITE	2'-6"	20.35 SF	20.35 SF
Pickup >	1	LED	WHITE	2'-6"	40.83 SF	40.83 SF
Home & Pharmacy	1	NO	WHITE	2'-0"	60.53 SF	60.53 SF
Market	1	NO	WHITE	2'-0"	17.75 SF	17.75 SF
Vision	1	NO	WHITE	1'-6"	3.69 SF	3.69 SF
FRONT SIGNAGE						301.56 SF
SIDE SIGNAGE						
Walmart Spark	1	LED	WHITE/YELLOW	12'-0"	158.41 SF	158.41 SF
SIDE SIGNAGE						158.41 SF
TOTAL BUILDING SIGNAGE						459.97 SF

- ### SIGNAGE GENERAL NOTES
- SIGNAGE FURNISHED BY WAL-MART AND INSTALLED BY GC.
 - ALL EXISTING WALMART EXTERIOR SIGNAGE IS TO REMAIN IN PLACE ON THE BUILDING UNTIL THE GC SIGN COMPANY IS ON SITE. THE EXISTING SIGNAGE WILL THEN BE REMOVED. PATCH AND REPAIR WORK WILL BE COMPLETED AT SIGN LOCATIONS. AND SIGNAGE WILL BE INSTALLED PER PLANS.
 - A TEMPORARY BANNER WILL BE INSTALLED PRIOR TO REMOVAL OF EXISTING EXTERIOR SIGNAGE. BANNER WILL REMAIN IN PLACE UNTIL ALL MODIFICATIONS AND/OR REPAIRS HAVE BEEN COMPLETED AND SIGNAGE IS INSTALLED.
 - TEMPORARY BANNER WILL BE APPROXIMATELY 125 SF (6'X25').
 - EXTERIOR SIGN WORK NEEDS TO BE SCHEDULED, COORDINATED, AND COMPLETED DURING WEEK 6 OF THE CONSTRUCTION SCHEDULE.
 - GENERAL CONTRACTOR RESPONSIBILITIES
 - BY END OF FIRST WEEK OF CONSTRUCTION, REVIEW EXISTING CONSTRUCTION WHERE SIGN(S) WILL BE INSTALLED. IF EXISTING CONDITIONS DO NOT MATCH SIGN ATTACHMENT DETAILS SHOWN, REQUEST APPROVAL FROM CONSTRUCTION MANAGER TO SUBMIT RFI IN ACCORDANCE WITH SECTION 0125. NOTE DIFFERENCES IN CONSTRUCTION, INCLUDING DIMENSIONS, AND INCLUDE PHOTOGRAPHS FOR CLARIFICATION.
 - PROVIDE SUBSTRATE SUITABLE FOR INSTALLATION OF SIGNAGE. REFER TO SIGN DETAILS FOR LIGHTED ID LOGO SIGNS.
 - PROVIDE JUNCTION BOXES AND CIRCUITRY TO "Walmart" and "spark" SIGNAGE. EXISTING (B) BOXES FROM "WALMART" SIGNAGE MAY BE REUSED.
 - PROVIDE JUNCTION BOXES AND CIRCUITRY TO TENANT SIGNAGE LOCATION SHOWN. REFER TO ELECTRICAL.
 - INSTALL ACCESS DOORS AND FRAMES IN GYPSUM BOARD CEILINGS IF REQUIRED BY RELOCATION OF EXISTING TENANT SIGNAGE. REFER TO ELECTRICAL.
 - VERIFY VOLTAGE AT CIRCUITS FEEDING LIGHTED SIGNAGE. REFER TO ELECTRICAL.
 - MAKE FINAL TERMINATIONS ON LIGHTED SIGNAGE.
 - REMOVE ALL LIT ID LOGO SIGNS AND UNLIT EXTERIOR STUD MOUNTED BUILDING SIGNS, UNLESS NOTED OTHERWISE.
 - MAKE REQUIRED EXTERIOR WALL PENETRATIONS, INSTALL CONDUIT, AND SEAL PENETRATIONS PER SPECIFICATION SECTION 07900.
 - INSTALL SIGNAGE PER DETAILS.

EXISTING SIGNAGE SCHEDULE						
(FOR REFERENCE ONLY)						
SIGNAGE LOCATION	QTY	COLOR	SIZE	INDIVIDUAL AREA	TOTAL AREA	
FRONT SIGNAGE						
Walmart	1	WHITE	4'-0"	123.62 SF	123.62 SF	
SUPERCENTER	1	YELLOW	1'-6"	23.78 SF	23.78 SF	
Always	2	RED	7'-0"	89.00 SF	178.00 SF	
Food Center	1	RED	2'-0"	32.17 SF	32.17 SF	
Low Prices	1	RED	2'-0"	28.33 SF	28.33 SF	
We Sell for Less	1	RED	2'-0"	43.67 SF	43.67 SF	
Bakery	1	RED	1'-0"	4.54 SF	4.54 SF	
Deli	1	RED	1'-0"	2.33 SF	2.33 SF	
Meat	1	RED	1'-0"	3.00 SF	3.00 SF	
Produce	1	RED	1'-0"	5.25 SF	5.25 SF	
Pharmacy	1	RED	1'-0"	5.63 SF	5.63 SF	
1-Hr. Photo	1	RED	1'-0"	7.33 SF	7.33 SF	
Optical	1	RED	1'-0"	4.58 SF	4.58 SF	
Tire & Lube	1	RED	2'-0"	30.33 SF	30.33 SF	
<< Express	1	RED	2'-0"	29.09 SF	29.09 SF	
Garden Center	1	RED	2'-6"	56.88 SF	56.88 SF	
TOTAL FRONT SIGNAGE					578.53 SF	
AUTO CENTER SIGNAGE						
WALMART	1	RED	1'-3"	11.15 SF	11.15 SF	
TIRE & LUBE	1	RED	1'-9"	26.15 SF	26.15 SF	
EXPRESS	1	RED	2'-6"	39.71 SF	39.71 SF	
Tires	4	WHITE	6"	1.01 SF	4.04 SF	
Lube Express	2	WHITE	6"	2.78 SF	5.56 SF	
TOTAL AUTO CENTER SIGNAGE					86.55 SF	
PHARMACY DRIVE-THRU SIGNAGE						
WALMART	1	WHITE	1'-3"	11.15 SF	11.15 SF	
Pharmacy Drive-Thru	2	WHITE	1'-4"	31.00 SF	62.00 SF	
Enter	2	RED	1'-0"	3.25 SF	6.50 SF	
Exit	2	RED	1'-0"	2.42 SF	4.84 SF	
TOTAL FRONT SIGNAGE					84.49 SF	
TOTAL BUILDING SIGNAGE					749.57 SF	

SGA Design Group, P.C.
 1437 South Boulder, Suite 550
 Tulsa, Oklahoma 74119
 P: 918.587.8600
 F: 918.587.8601
 www.sgaingroup.com



Walmart
 ALBUQUERQUE, NM
 400 EUBANK BLVD NE
 STORE NO: 835-275
 21894016 | PHOTO: 192

ISSUE BLOCK

NO.	DESCRIPTION	DATE

CHECKED BY: TRH Checker
 DRAWN BY: KFB
 PROTO CYCLE: 02/25/22
 DOCUMENT DATE: 04/27/22

STATE OF NEW MEXICO
 TRAVIS R. HAGER
 No. 6148
 REGISTERED ARCHITECT
 04/27/2022

EXTERIOR SIGNAGE

SHEET: **A2.1**