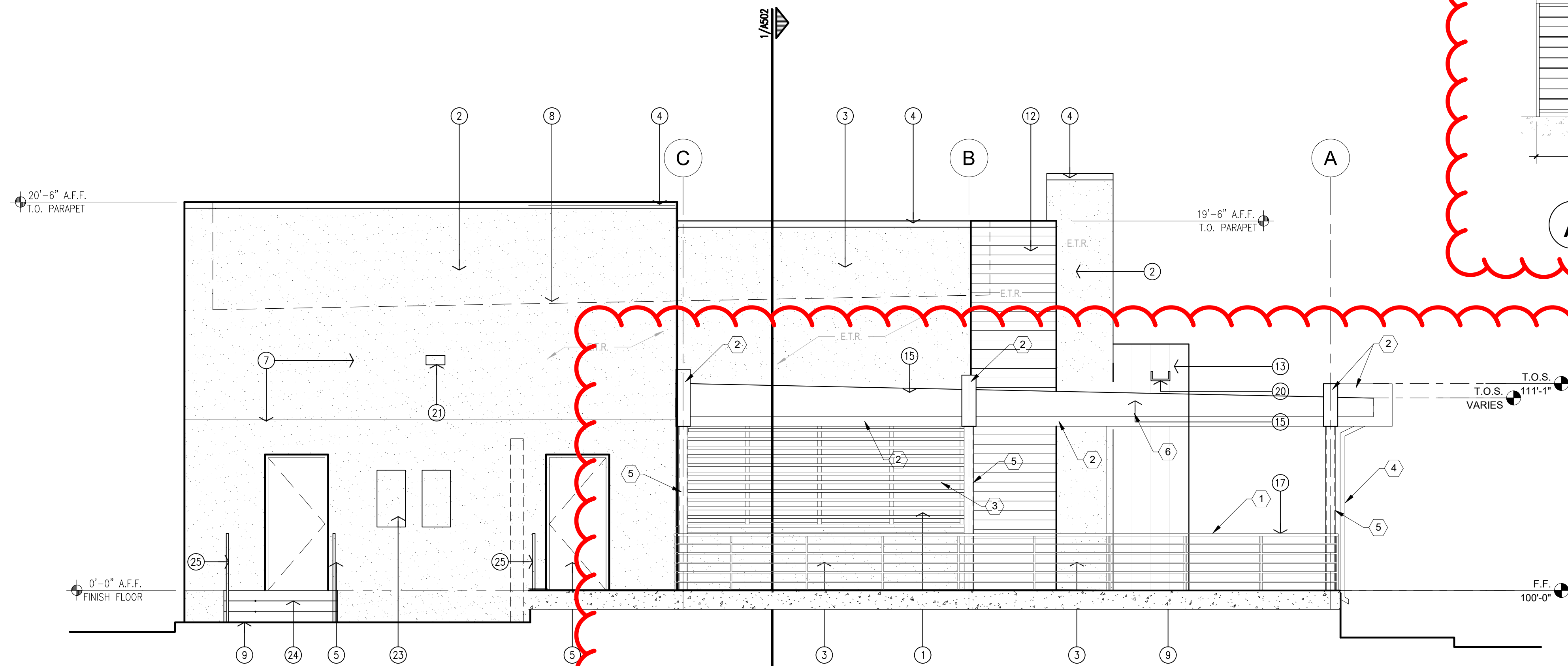
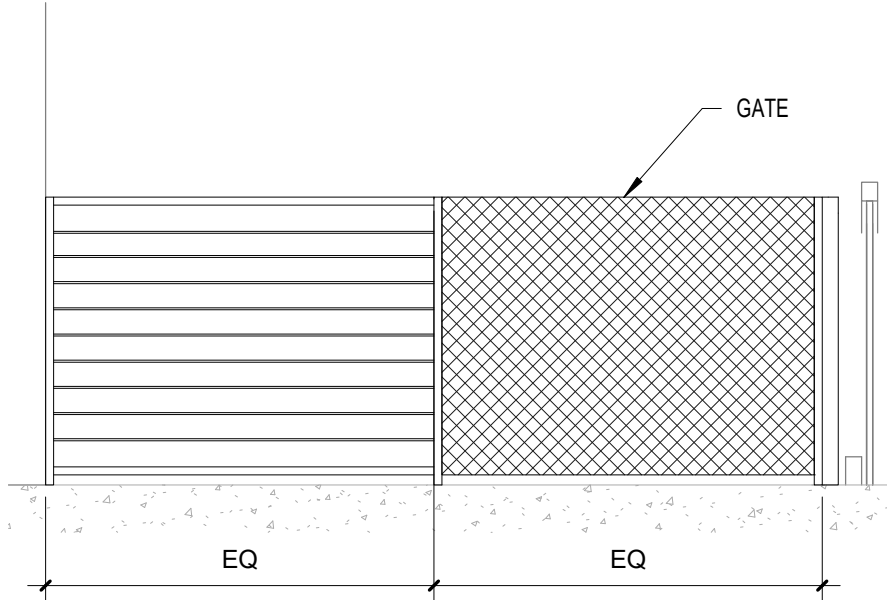


3 South Elevation
Scale: 1/4"=1'



4 East Elevation
Scale: 1/4"=1'



A SOUTH GATE
SCALE: 1/2" = 1'-0"

GENERAL NOTES:

- [A] ALL DIMENSIONS ARE FROM FACE OF STUD TO FACE OF STUD, UNLESS OTHERWISE NOTED.
- [B] THE CONTRACTOR SHALL VERIFY ALL DIMENSIONS AND CONDITIONS IN THE FIELD. IF DIMENSIONAL ERROR, VARIANCES, AND/OR CONFLICTS EXIST, AS DESCRIBED WITHIN THE CONSTRUCTION DOCUMENTS, OR CONDITIONS ARE ENCOUNTERED THAT ARE NOT COVERED IN THE DRAWINGS, THE CONTRACTOR SHALL NOTIFY THE ARCHITECT BEFORE COMMENCING THAT PORTION OF THE WORK.
- [C] CONTRACTOR TO VERIFY SIZES OF ALL OWNER PROVIDED EQUIPMENT PRIOR TO INSTALLATION.
- [D] ALL CONSTRUCTION SHALL BE IN COMPLIANCE WITH ALL APPLICABLE BUILDING CODES, MODEL CODES, LOCAL CODES, LAWS AND ORDINANCES.
- [E] PARAPET HEIGHTS HAVE BEEN INCREASED TO SCREEN ROOFTOP MECHANICAL EQUIPMENT. ADDITIONAL SCREENING MAY BE ADDED IF NOT SUFFICIENT.

KEYED NOTES:

- [1] ALUMINUM STOREFRONT SYSTEM, CLEAR ANODIZED FRAME WITH TINTED GLAZING.
- [2] 2-COAT SYNTHETIC STUCCO SYSTEM WITH ELASTOMERIC FINISH COAT. COLOR: 1 LIGHT TAN.
- [3] 2-COAT SYNTHETIC STUCCO SYSTEM WITH ELASTOMERIC FINISH COAT. COLOR: 2 MEDIUM BEIGE.
- [4] PRE-FINISHED SHEET METAL PARAPET CAP.
- [5] HOLLOW METAL DOOR PAINTED TO MATCH STUCCO.
- [6] 12" HIGH ADDRESS CHANNEL LETTERS.
- [7] STUCCO CONTROL JOINT.
- [8] LINE OF ROOF LEVEL BEYOND.
- [9] LINE OF EXTERIOR FINISH GRADE.
- [10] OWNER PROVIDED SIGNAGE. PROVIDE POWER.
- [11] PREFINISHED SHEET METAL COLLECTOR BOX AND DOWNSPOUT.
- [12] DRY STACKED MASONRY VENEER. CREATIVE MINES-CRAFT BOARD FORM: BARNWOOD.
- [13] FIRESTONE: UNA-CLAD UC-500 CHARCOAL GRAY.
- [14] PARAPET BEYOND.
- [15] STEEL FRAMED OPEN AIR CANOPY, PAINTED.
- [16] NOT USED.
- [17] PATIO RAILING. SEE SITE DETAILS.
- [18] SHEET METAL TO MATCH SF.
- [19] ROOF DRAIN NOZZLE.
- [20] PREFINISHED SHEET METAL SCUPPER.
- [21] LIGHT FIXTURE. SEE ELECTRICAL.
- [22] ELECTRICAL EQUIPMENT. SEE ELECTRICAL.
- [23] GAS METERS. SEE PLUMBING.
- [24] CONCRETE STAIRS.
- [25] STEEL HANDRAILS.

GENERAL NOTES

1. EXISTING GATE AND RAILING TO BE PROTECTED FROM DAMAGE FOR MODIFICATION.
2. EXISTING EXTERIOR TO REMAIN THE SAME. IF DAMAGED MATCH MATERIALS AND COLORS. SEE PRODUCT CODE SCHEDULE FOR EXISTING EXTERIOR FINISHES.

KEYED NOTES

- 1 EXISTING RAILING. MODIFY TO ACCOMMODATE NEW COLUMNS.
- 2 FAUX BEAM WRAP IN FIRESTONE: UNA-CLAD UC-500 CHARCOAL GRAY.
- 3 2X2 PREMIUM STANDARD AND BETTER DOUGLAS FUR LUMBER. STAIN TO MATCH COLOR OF SOFT WOOD.
- 4 SQUARE DOWNSPOUT. MINIMAL CURVES FOR A SMOOTH FINISH. PAINT TO MATCH UNA-CAD UC-500 CHARCOAL GRAY.
- 5 PAINT COLUMNS TO MATCH UNA-CLAD UC-500 CHARCOAL GRAY.
- 6 FIRESTONE: UNA-CLAD UC-500 CHARCOAL GRAY. FASCIA.
- 7 4X5 BOX GUTTER, PAINT BLACK.

DATE
3/28/2022

SCALE:

SHEET
A21

PROJECT TITLE
TAMASHI

2101 VISTA OESTE NW

PROJECT MANAGER

JOB NO.
Project Number

DRAWN BY:

SHEET TITLE
ELEVATIONS



MODULUS ARCHITECTS

100 SUN AVENUE NE SUITE 600
ALBUQUERQUE, NEW MEXICO 87109
PHONE (505) 338-1499 FAX (505) 338-1498
TOLL FREE 1-866-224-2161

REV DATE BY REVISION