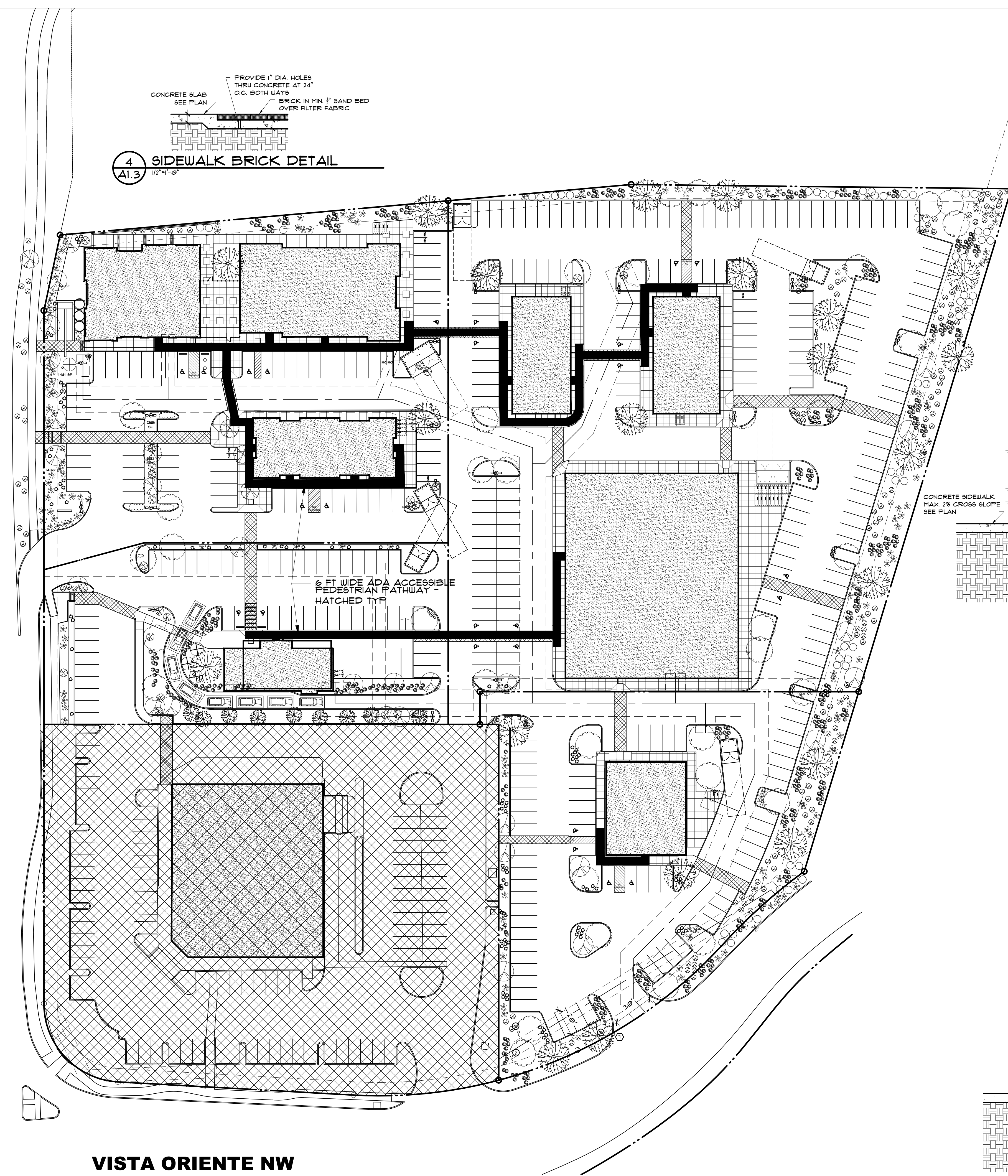
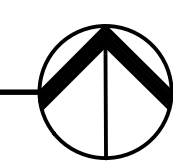


UNSER BLVD NW



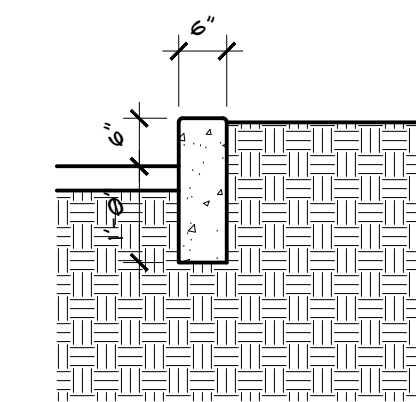
VISTA ORIENTE NW

SITE PLAN 6 FT ADA ACCESSIBLE PEDESTRIAN PATHWAY 1" = 40'-0"



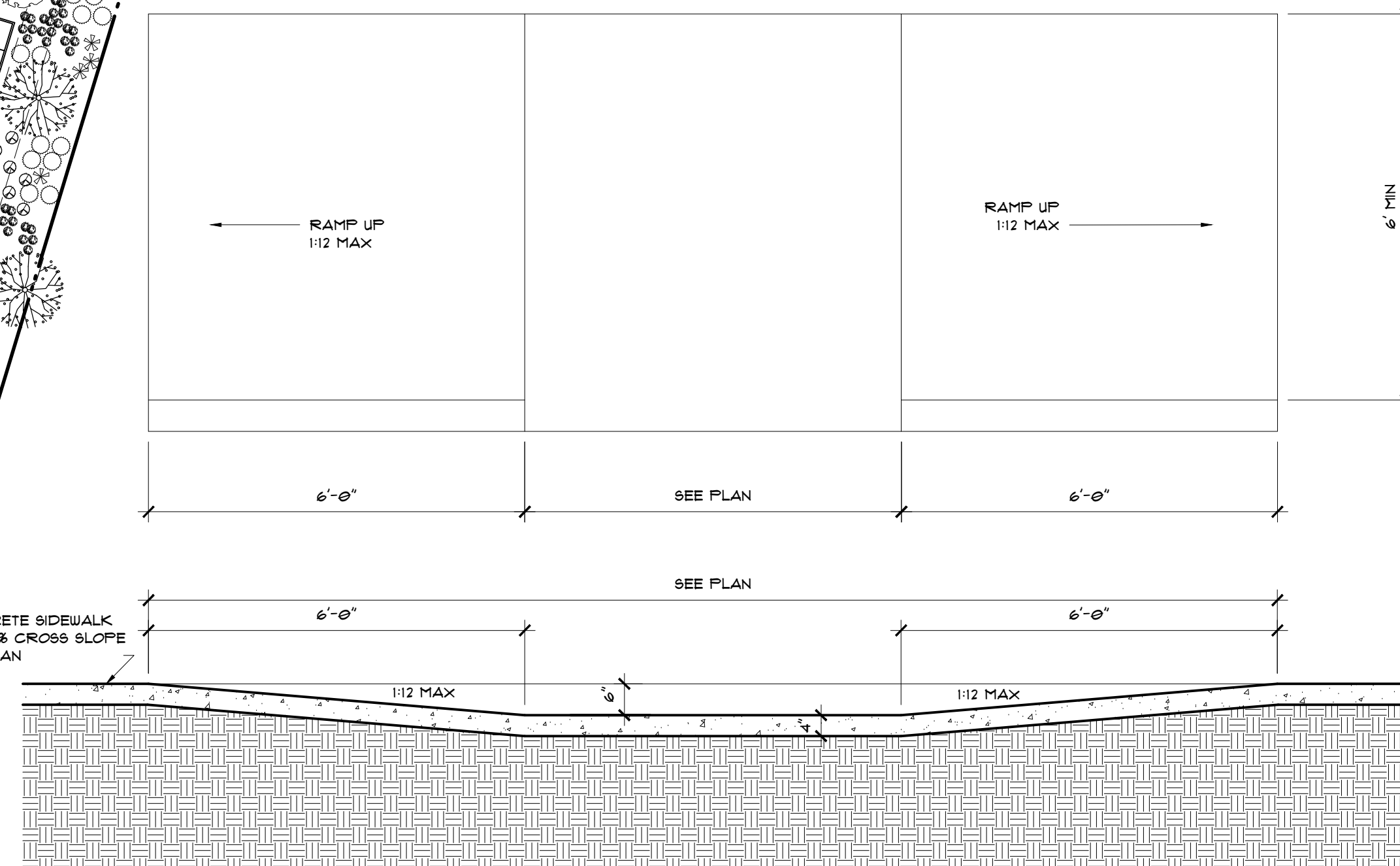
CONCRETE SLAB  
SEE PLAN  
PROVIDE 1" DIA HOLES  
THRU CONCRETE AT 24"  
O.C. BOTH WAYS  
BRICK IN MIN 1" SAND BED  
OVER FILTER FABRIC

4 SIDEWALK BRICK DETAIL  
AI.3 1/2"=1'-0"

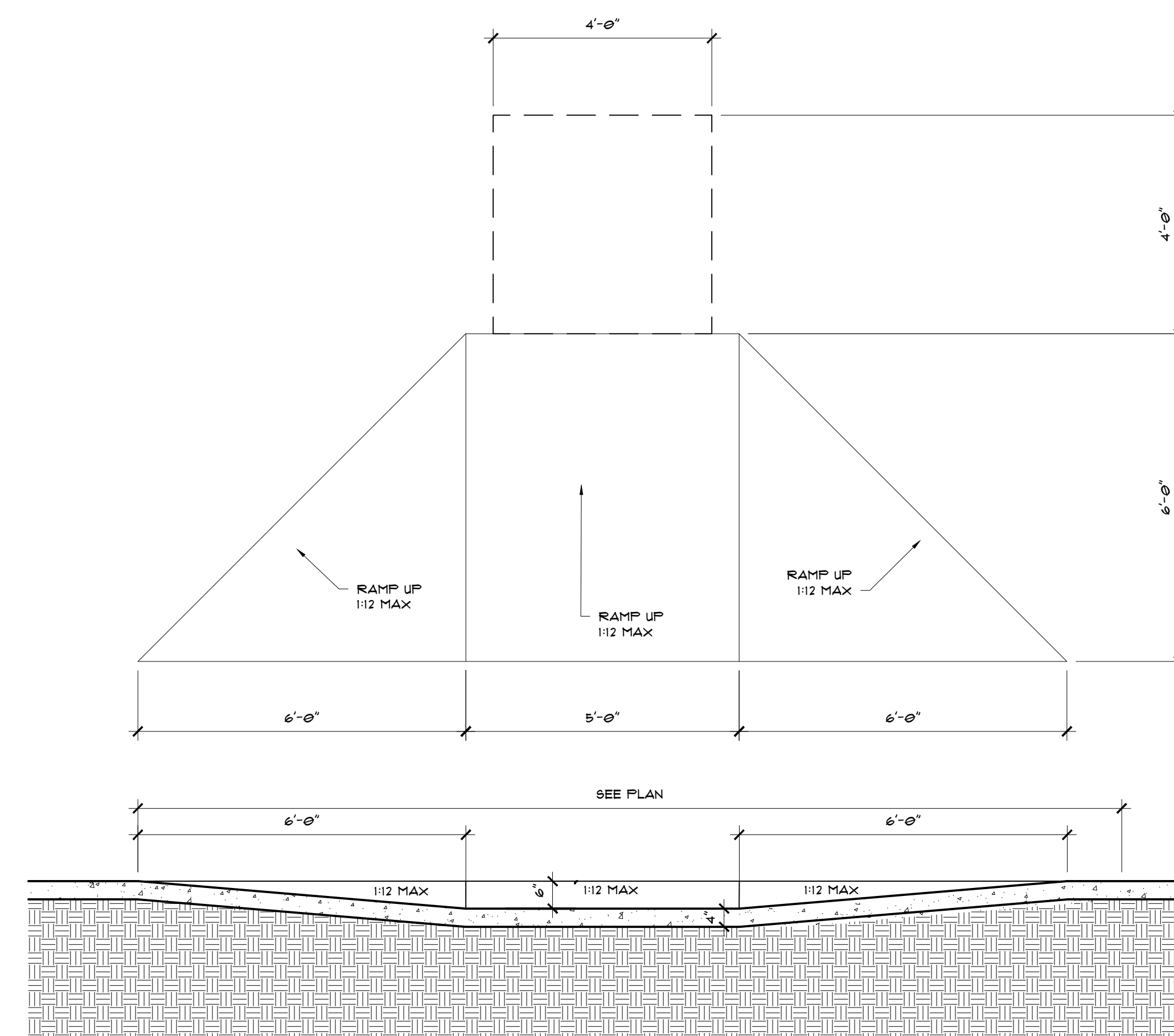


1 CURB DETAIL  
AI.3 1/2"=1'-0"

CONCRETE SIDEWALK  
MAX 2% CROSS SLOPE  
SEE PLAN

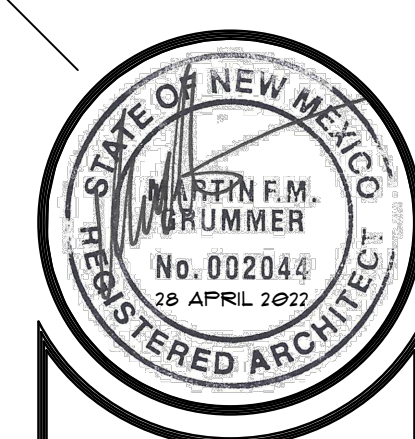


2 PARALLEL RAMP DETAIL  
AI.3 1/2"=1'-0"



3 PERPENDICULAR RAMP DETAIL  
AI.3 1/2"=1'-0"

ALL DIMENSIONS ARE TO BE FIELD VERIFIED. IF THERE ARE DISCREPANCIES, PLEASE NOTIFY THE ARCHITECT. DRAWING ARE NOT TO BE SCALED. USE DIMENSIONS FOR ACCURACY.



MARTIN FM GRUMMER  
ARCHITECT  
331 WHELEYS PLACE NE  
ALBUQUERQUE, NEW MEXICO 87106  
(505) 265-2507



AA

UNSER & VISTA ORIENTE  
2220 UNSER BLVD NW  
BUILDING #4  
ALBUQUERQUE, NM 87114  
6 FT ADA ACCESS. PPATHWAY

BLDG.  
#4

DATE:  
28 APRIL 2022  
DRAWN BY:  
MFMG  
CHECKED BY:  
VERIFIED BY:

REVISIONS  
18 MAY 2022

SHEET NO:  
A1.3