

# ADMINISTRATIVE AMENDMENT

FILE #: \_\_\_\_\_ PROJECT #: \_\_\_\_\_

\_\_\_\_\_

\_\_\_\_\_

\_\_\_\_\_

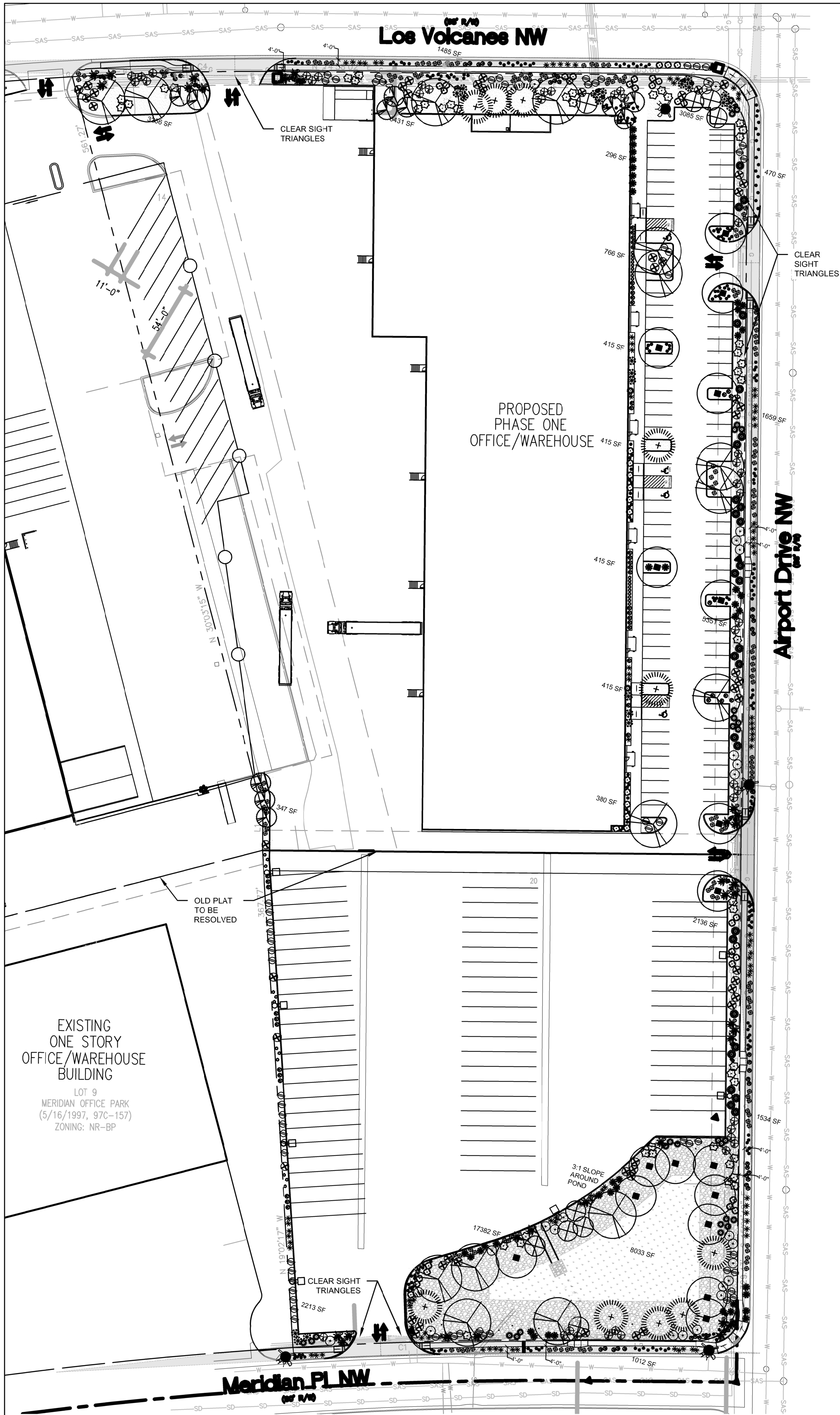
\_\_\_\_\_

\_\_\_\_\_

\_\_\_\_\_  
APPROVED BY

\_\_\_\_\_  
DATE





A1 PLANTING PLAN

PLANT LEGEND

QTY.	SYMBOL	SCIENTIFIC NAME COMMON NAME (WATER USE)	SIZE	MATURE SIZE
<b>TREES</b>				
10		FORESTIERA NEOMEXICANA NEW MEXICO OLIVE (M)	2.5" B&B	15' HT. X 12' SPR.
16		GLEDTISIA TRIACANTHOS HONEY LOCUST (M)	2.5" B&B	40' HT. X 35' SPR.
10		PINUS NIGRA AUSTRIAN PINE (M)	6' - 8'	35' HT. X 25' SPR.
17		PISTACIA CHINENSIS CHINESE PISTACHE (M+)	2.5" B&B	40' HT. X 30' SPR.
12		MALLUS 'SPRING SNOW' SPRING SNOW CRAB APPLE (M)	15 GAL.	20' HT. X 15' SPR.
7		VITEX AGNUS-CASTUS CHASTE TREE (M)	15 GAL.	20' HT. X 15' SPR.
<b>SHRUBS &amp; GROUNDCOVERS</b>				
43		BERBERIS JULIANAE WINTERGREEN BARBERRY (M)	5-GAL.	5' HT. X 5' SPR.
50		BUDDLEIA DAVIDII BUTTERFLY BUSH (M)	5-GAL.	7' HT. X 6' SPR.
87		CARYOPTERIS CLANDONENSIS BLUE MIST SPIREA (M)	5-GAL.	2' HT. X 3' SPR.
30		CHRYSANTHEMUM LEUCANTHEMUM CHAMISA (L)	5-GAL.	5' HT. X 7' SPR.
45		FALLUGIA PARADOXA APACHE PLUME (L)	5-GAL.	6' HT. X 7' SPR.
36		JUNIPERUS SABINA BUFFALO JUNIPER (M)	5-GAL.	1' HT. X 8' SPR.
46		JASMINUM NUDIFLORUM WINTER JASMINE (M)	5-GAL.	4' HT. X 7' SPR.
63		LEUCOPHYLLUM LANGMANIAE LYNN'S LEGACY TEXAS RANGER (L)	5-GAL.	5' HT. X 5' SPR.
162		SALVIA GREGGI CHERRY SAGE (M)	5-GAL.	2' HT. X 3' SPR.
29		CERCOCARPUS LEDIFOLIUS CURL LEAF MOUNTAIN MAHOGANY (M)	5-GAL.	12' HT. X 6' SPR.
<b>DESERT ACCENTS</b>				
30		DASYLIRION WHEELERI BLUE SOTOL (RW)	5-GAL.	5' HT. X 5' SPR.
99		HESPERALOE PARVIFLORA 'RED' RED YUCCA (L+)	5-GAL.	30" HT. X 4' SPR.
21		YUCCA FAXONIANA PALM YUCCA (M)	4' - 6'	15' HT. X 6' SPR.
<b>ORNAMENTAL GRASSES</b>				
274		BOUTELOUA GRACILIS BLONDE AMBITION BLUE GRAMA (L)	5-GAL.	30" HT. X 30" SPR.
30		CALAMAGROSTIS X ACUTIFLORA KARL FOERSTER GRASS (M)	5-GAL.	4' HT. X 2' SPR.
47		NOLINA MICROCARPA BEARGRASS	5-GAL.	6' HT. X 5' SPR.
<b>LANDSCAPE BOULDERS AND GRAVEL MULCH</b>				
23		LANDSCAPE BOULDER: MINIMUM SIZE 3'x3'		
24,217 SF		MOUNTAIN AIR BROWN GRAVEL MULCH (3" DEPTH OVER FILTER FABRIC, DEWITT PRO-5 WEED CONTROL, OR EQUAL)		
6,355 SF		MANZANO GRAY CRUSHED GRAVEL MULCH (3" DEPTH OVER FILTER FABRIC, DEWITT PRO-5 WEED CONTROL, OR EQUAL)		
17,382 SF		4"-8" RIP RAP GRAVEL (6" DEPTH OVER FILTER FABRIC, DEWITT PRO-5 WEED CONTROL, OR EQUAL)		
8,033 SF		REVEGETATION SEEDING		
<b>REVEGETATION SEEDING</b>				
AREAS SHALL BE SEEDDED BY HYDROMULCH APPLICATION PER COA SPECIFICATION SECTION 1012. LIMITS OF SEEDING SHOWN ON PLANS IS SCHEMATIC. CONTRACTOR SHALL APPLY SEEDING OPERATIONS TO LIMIT OF DISTURBANCE.				
SANDY SOILS MIX SUITABLE FOR DETENTION PONDS (20 LBS. PLS PER ACRE TOTAL)				
SCIENTIFIC NAME - COMMON NAME			#PLS/AC	
HILARIA JAMESII 'VIVA' - GALLETIA			7.0	
ORYZOPSIS HYMENOIDES 'NESPAP' - INDIAN RICE GRASS			5.0	
BOUTELOUA GRACILIS 'HACHITA' - BLUE GRAMA			2.0	
BOUTELOUA CURTIPENDULA 'VAUGHN' - SIDEOATS GRAMA			1.0	
AGROPYRON SMITHII - WESTERN WHEAT			1.0	
SPOROBOLUS CRYPTANDRUS - SAND DROPSEED			1.0	
SPOROBOLUS AIROIDES 'SALADO' - ALKALI SACATON			1.0	
EPHEDRA VIRIDIS - GREEN MORMON TEA			.25	
ARTIPLEX CANESCENS - FOURWING SALTBRUSH			.25	
ARTEMISIA FILIFOLIA - SAND SAGE			.5	
SPHAERALCEA AMBIGUA - DESERT GLOBEMALLOW			.25	
OENOTHERA PALLID - WHITE EVENING PRIMROSE			.25	
BAILEYA MULTIRADIATA - DESERT MARIGOLD			.25	
PENSTEMON AMBIGUUS - SAND PENSTEMON			.25	

GENERAL LANDSCAPE NOTES

- PRIOR TO BEGINNING WORK ON THE PROJECT, THE LANDSCAPE CONTRACTOR SHALL REVIEW THE PROJECT IN THE FIELD WITH THE OWNER'S REPRESENTATIVE.
- IF DISCREPANCIES OCCUR BETWEEN THE DRAWINGS AND THE SITE, THE LANDSCAPE CONTRACTOR SHALL NOTIFY THE OWNER'S REPRESENTATIVE FOR CLARIFICATION PRIOR TO PROCEEDING ON THAT PORTION OF WORK.
- ALL PLANTING AREAS ARE TO HAVE WEEDS AND COMPETITIVE VEGETATION REMOVED PRIOR TO PREPARATION FOR PLANTING. ALL EXISTING PLANT MATERIALS TO REMAIN SHALL BE PROTECTED DURING CONSTRUCTION. DAMAGED MATERIALS SHALL BE REPLACED IN KIND AT THE CONTRACTOR'S EXPENSE. PLANT QUANTITIES ARE PROVIDED FOR CONTRACTOR'S CONVENIENCE ONLY. PLANS SHALL TAKE PRECEDENCE.
- THE OWNER'S REPRESENTATIVE SHALL APPROVE ALL PLANT MATERIAL PRIOR TO PLANTING. IN ADDITION, THE OWNER REPRESENTATIVE RESERVES THE RIGHT TO REFUSE ANY PLANT MATERIAL DEEMED UNACCEPTABLE. THE OWNER'S REPRESENTATIVE IS TO APPROVE ANY AND ALL SUBSTITUTIONS.
- IT IS THE LANDSCAPE CONTRACTOR'S RESPONSIBILITY TO LOCATE ALL UNDERGROUND UTILITIES PRIOR TO COMMENCEMENT OF PLANTING OPERATIONS.

**IRRIGATION**  
IRRIGATION SYSTEM STANDARDS OUTLINED IN THE WATER CONSERVATION LANDSCAPING AND WATER WASTE ORDINANCE SHALL BE STRICTLY ADHERED TO. THE TREES WILL BE PROVIDED WITH (6) 2 GPH EMITTERS AND SHRUBS/ GROUNDCOVERS WILL BE PROVIDED WITH (2) 1 GPH EMITTERS.

**RESPONSIBILITY OF MAINTENANCE**  
MAINTENANCE OF ALL PLANTING AND IRRIGATION, INCLUDING THOSE WITHIN THE PUBLIC R.O.W., SHALL BE THE RESPONSIBILITY OF THE PROPERTY OWNER.

**METHOD FOR COMPLYING WITH WATER CONSERVATION ORDINANCE**  
THE PLANT PALETTE IS PREDOMINANTLY COMPRISED OF PLANTS WITH LOW TO MEDIUM WATER USE REQUIREMENTS, THEREBY MINIMIZING IRRIGATION NEEDS WHILE ENSURING THE VIABILITY OF THE PLANTS.

**PNM COORDINATION**  
COORDINATION WITH PNM'S NEW SERVICE DELIVERY DEPARTMENT IS NECESSARY REGARDING PROPOSED TREE LOCATION AND HEIGHT, SIGN LOCATION AND HEIGHT, AND LIGHTING HEIGHT IN ORDER TO ENSURE SUFFICIENT SAFETY CLEARANCES.

**SCREENING** WILL BE DESIGNED TO ALLOW FOR ACCESS TO ELECTRIC UTILITIES. IT IS NECESSARY TO PROVIDE ADEQUATE CLEARANCE OF TEN FEET IN FRONT AND AT LEAST 5 FEET ON THE REMAINING THREE SIDES SURROUNDING ALL GROUND-MOUNTED EQUIPMENT FOR SAFE OPERATION, MAINTENANCE AND REPAIR PURPOSES.

**CLEAR SIGHT DISTANCE**  
LANDSCAPING AND SIGNAGE WILL NOT INTERFERE WITH CLEAR SIGHT REQUIREMENTS. THEREFORE, SIGNS, WALLS, TREES, AND SHRUBBERY BETWEEN 3 AND 8 FEET TALL (AS MEASURED FROM THE GUTTER PAN) WILL NOT BE ACCEPTABLE IN THE AREA.

**SHREDDED BARK MULCH AT TREES**  
SHREDDED BARK MULCH WILL BE PROVIDED BENEATH THE ENTIRE TREE CANOPY FOR ALL NEW TREES IN LANDSCAPE AREAS. PROVIDE 3' DIAMETER CIRCLE.

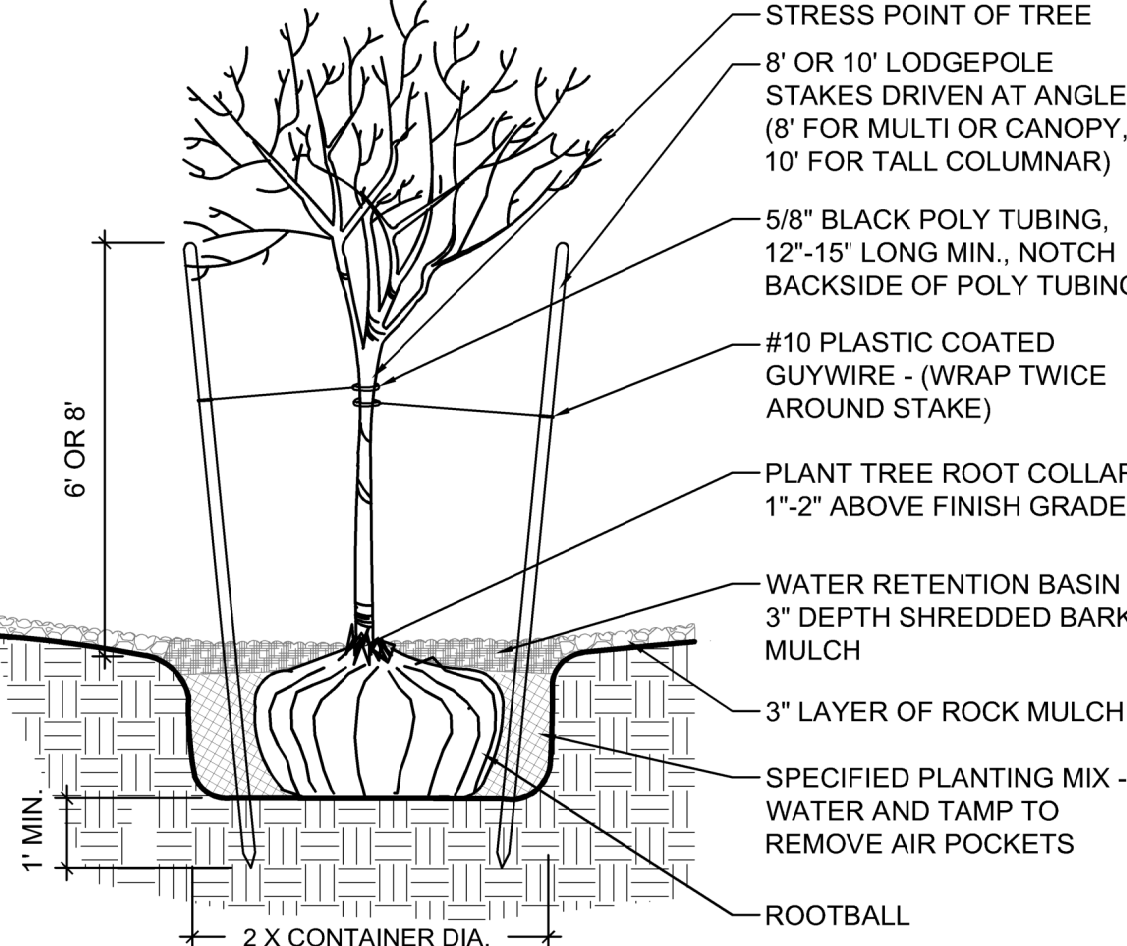
LANDSCAPE CALCULATIONS

SITE AREA (8.39 AC)	365,617 SF
BUILDING FOOTPRINT	84,913 SF
NET LOT	280,704 SF
REQUIRED / PROVIDED LANDSCAPE	54,843 SF (15%) / 55,987 SF (15%)
<b>COVERAGE</b>	
REQUIRED / PROVIDED VEGETATIVE COVER	41,132 SF (75%) / 49,767 SF (91%)
REQUIRED / PROVIDED GROUND-LEVEL COVER	13,711 SF (25%) / 16,016 SF (29%)
<b>PARKING LOT TREES</b>	
PARKING LOT SPACES PROVIDED : 91	
ONE (1) TREE IS REQUIRED PER 10 PARKING SPACES	
REQUIRED/PROVIDED PARKING LOT TREES	10/15
<b>PARKING LOT AREA</b>	
AT LEAST 15% OF THE PARKING LOT AREA OF LOTS CONTAINING 50 OR MORE SPACES SHALL BE LANDSCAPED.	
PARKING LOT AREA : 28,235 SF	
REQUIRED / PROVIDED PARKING LOT LANDSCAPE	4,235 SF (15%) / 9,791 SF (35%)
<b>STREET TREES</b>	
STREET TREE ORDINANCE REQUIRES SPACING OF STREET TREES AT 25' O.C. UNDERGROUND UTILITIES IN MAXIMUM STREET TREE SETBACK RESTRICTS STREET TREE PLANTING AIRPORT DRIVE NW, LOS VOLCANES, AND MERIDIAN.	
REQUIRED / PROVIDED STREET TREES:	
AIRPORT DRIVE IS 845' AND REQUIRES 36 TREES.	36/0
LOS VOLCANES IS 453' AND REQUIRES 18 TREES.	18/0

**CLEAR SIGHT DISTANCE**  
LANDSCAPING AND SIGNAGE WILL NOT INTERFERE WITH CLEAR SIGHT REQUIREMENTS. THEREFORE, SIGNS, WALLS, TREES, AND SHRUBBERY BETWEEN 3 AND 8 FEET TALL (AS MEASURED FROM THE GUTTER PAN) WILL NOT BE ACCEPTABLE IN THE AREA.

NOTES:

- THE WATER RETENTION BASIN SHALL BE TWICE THE PLANTING PIT DIAMETER.
- THE EDGES OF THE WATER RETENTION BASIN SHALL BE SMOOTHLY FORMED WITH NO OBTRUSIVE EDGES.
- REMOVE ROPE AND BURLAP AFTER PLANTING.

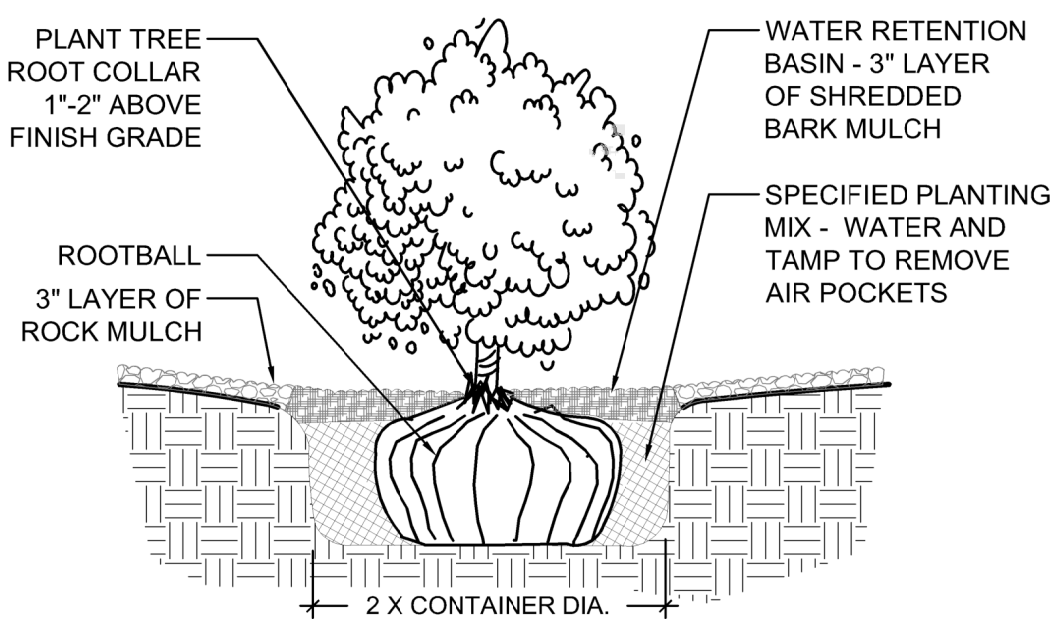


1 TREE PLANTING

SCALE: N.T.S.

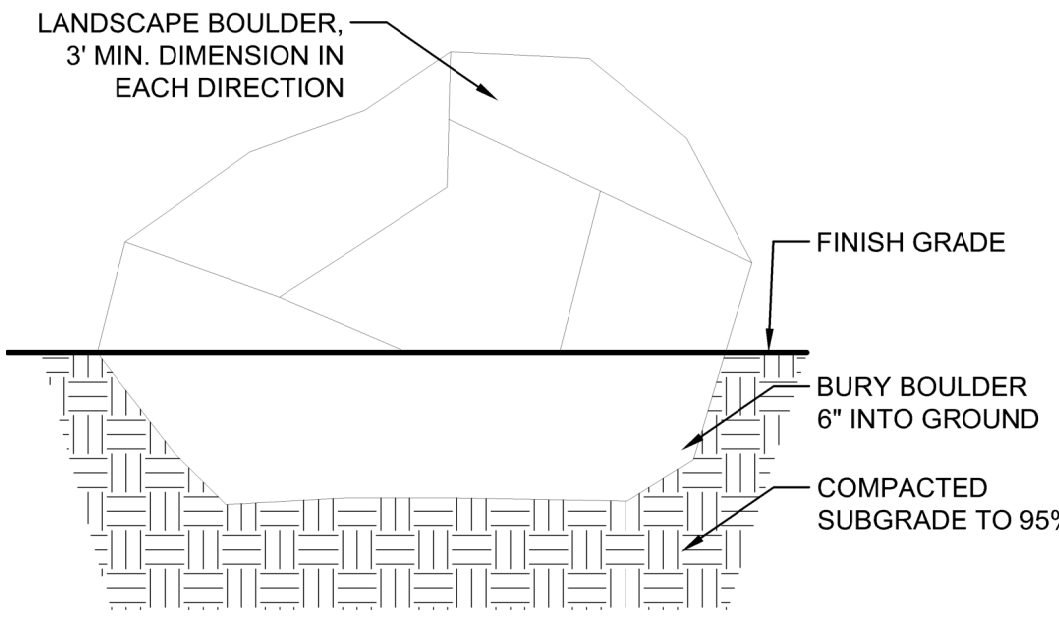
NOTES:

- THE WATER RETENTION BASIN SHALL BE TWICE THE PLANTING PIT DIAMETER.
- THE EDGES OF THE WATER RETENTION BASIN SHALL BE SMOOTHLY FORMED WITH NO OBTRUSIVE EDGES.



2 SHRUB PLANTING

SCALE: N.T.S.



3 LANDSCAPE BOULDER

SCALE: N.T.S.

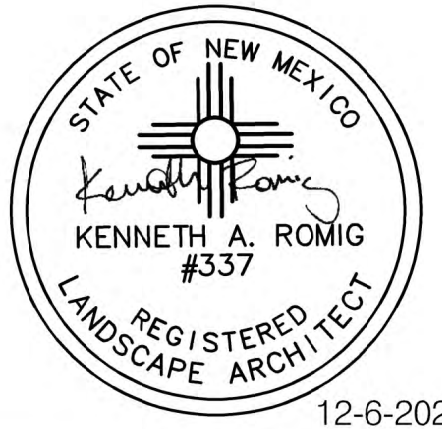


**CONSENSUS**  
Planning / Landscape Architecture  
302 Eighth Street NW  
Albuquerque, NM 87102  
(505) 764-9801 Fax 842-5495  
e-mail: cp@consensusplanning.com

DESCRIPTION



**TATE FISHBURN**  
ARCHITECT  
8022941 CORRALES NEW MEXICO 87046 505 899 9338 FAX899 9328



NEW OFFICE /  
WAREHOUSE  
FOR BRUNACINI  
DEVELOPMENT

541 AIRPORT DRIVE NW,  
ALBUQUERQUE, NM 87121  
DECEMBER 6, 2022

SUBMITTAL: DECEMBER 15, 2022

REVISIONS

NO.	DATE	DESCRIPTION

PROJECT NO: 1083-08

CAD DWG FILE:

DESIGNED BY: ISH DATE: 12/15/22

DRAWN BY: ISH/KR DATE: 12/15/22

CHECKED BY: KR / JS DATE: 12/15/22

SHEET TITLE

LANDSCAPE  
PLAN

DRAWING SHEET

LP100