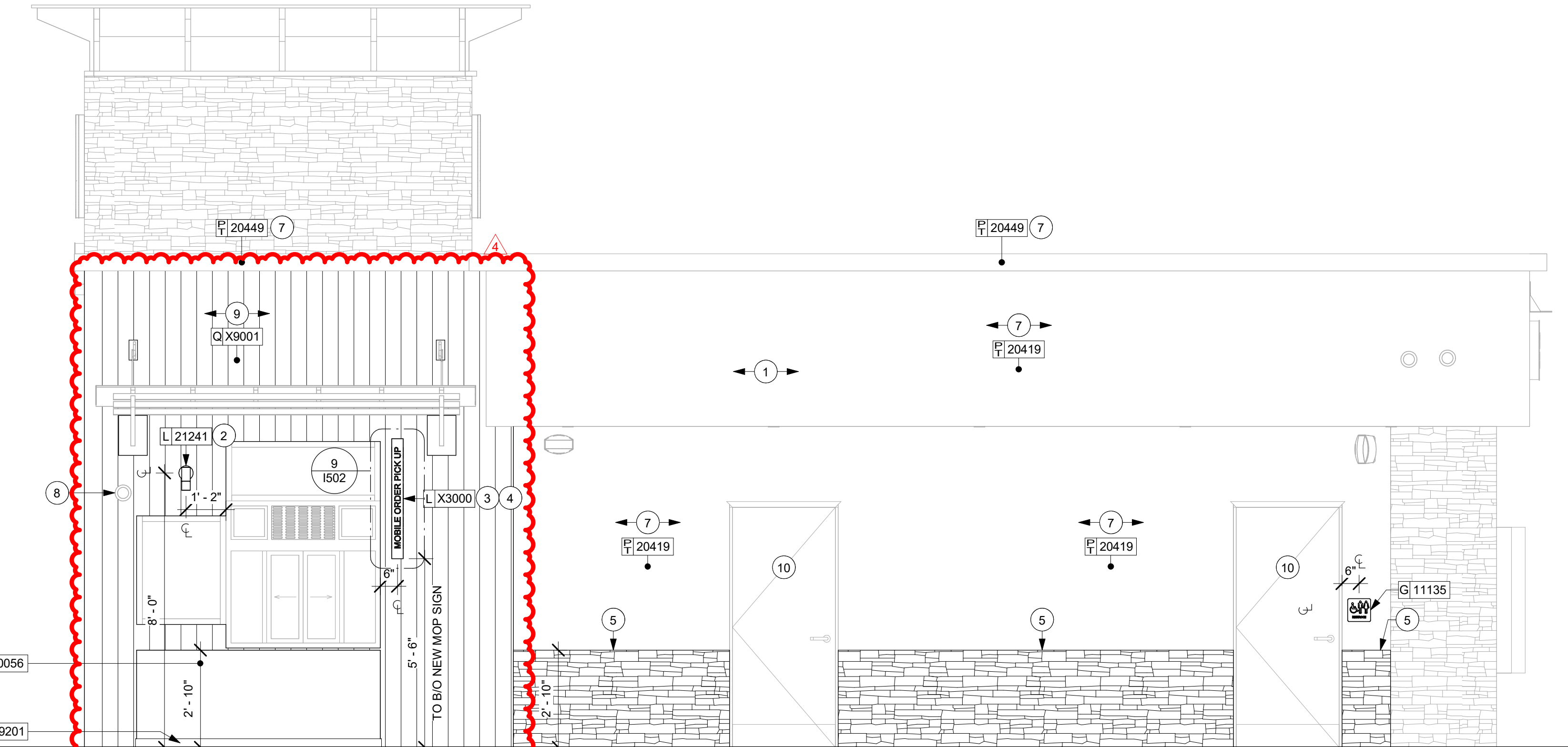


2 EXTERIOR ELEVATION - NORTHEAST



1 EXTERIOR ELEVATION - NORTHWEST

KEYED NOTES

- EXISTING TO REMAIN (ETR) UNLESS NOTED OTHERWISE.
- NEW WALL-MOUNTED EXTERIOR LIGHTING SCONCE FIXTURE.
- NEW WALL-MOUNTED ILLUMINATED "MOBILE ORDER PICK UP" SIGN.
- PROVIDE SIGNAGE DISCONNECT ON INSIDE FACE OF WALL.
- NEW HALF-HEIGHT EXTERIOR FURRING WALL. FINISHING MATERIAL TO MATCH EXISTING STONE FACADE. NEW FINISHING EDGE TO ALIGN WITH EXISTING STONE FACADE EDGE.
- NEW EXTERIOR WOOD CLADDING FURRING WALL TO ALIGN WITH EXISTING STONE FINISHED WALL.
- NEW PAINT FINISH ON EXTERIOR ELEMENT.
- SECURITY CAMERA TO BE REINSTALLED IN SAME POSITION AFTER NEW EXTERIOR FURRING WALL HAS BEEN INSTALLED. GC TO VERIFY CAMERA LOCATION IN FIELD.
- NEW FURRING WALL WITH WOOD CLADING FINISH. GC TO INSTALL PER MANUFACTURER INSTALL GUIDE.
- EXISTING DOORS AND TRIM TO BE PAINTED WITH SAME PAINT AS HOSTING WALL.

GENERAL NOTES

- GENERAL CONTRACTOR TO COORDINATE AND SCHEDULE SIGNAGE INSTALLATION WITH THE SIGNAGE CONTRACTOR PROVIDING A MINIMUM SCHEDULING NOTICE OF 4 WEEKS AND 1 WEEK PRIOR TO SCHEDULED DATE OF INSTALLATION. CONSTRUCTION MANAGER TO PROVIDE GENERAL CONTRACTOR WITH SIGNAGE CONTRACTOR CONTACT INFORMATION.
- GENERAL CONTRACTOR SHALL COORDINATE WITH ELECTRICAL CONTRACTOR TO FURNISH AND INSTALL ELECTRICAL CIRCUITS INCLUDING ALL CONDUIT, WIRE, CONNECTIONS AND BREAKER AT PANEL BOARD NECESSARY TO SERVE SIGNAGE.
- GENERAL CONTRACTOR TO PROVIDE FIRE TREATED WOOD STUD BLOCKING OR EQUIVALENT TO SUPPORT SIGNAGE.
- SIGNAGE CONTRACTOR SHALL VERIFY SIZE AND LOCATION OF ANY AND ALL ALLOWABLE MONUMENT OR POLE SIGNAGE AND PROVIDE SHOP DRAWING(S) PRIOR TO FABRICATION TO THE STARBUCKS DESIGNER FOR APPROVAL.
- SIGNAGE CONTRACTOR TO INSTALL SIGNAGE IN COMPLIANCE WITH LOCAL CODES AND OBTAIN PERMIT.
- SIGNAGE CONTRACTOR TO SUPPLY SHOP DRAWINGS TO CONSTRUCTION MANAGER AND TO THE GENERAL CONTRACTOR AS NEEDED. GENERAL CONTRACTOR TO NOTIFY CONSTRUCTION MANAGER IMMEDIATELY IF SHOP DRAWINGS OR INSTALLATION IS IN DISCREPANCY WITH ARCHITECTURAL DRAWINGS.
- GENERAL CONTRACTOR TO CLEAN, PATCH AND REPAIR EXISTING EXTERIOR AS REQUIRED.

FOR  
ALBUQUERQUE  
OFFICIAL USE  
ONLY

**STARBUCKS®**  
2401 UTAH AVENUE SOUTH  
SEATTLE, WASHINGTON 98134  
(206) 318-1575

THESE DRAWINGS AND THE PROJECT MANUAL ARE CONFIDENTIAL AND SHALL REMAIN THE SOLE PROPERTY OF STARBUCKS CORPORATION, WHICH IS THE OWNER OF THE COPYRIGHT IN THIS WORK. THEY SHALL NOT BE REPRODUCED (IN WHOLE OR IN PART), SHARED WITH THIRD PARTIES OR USED IN ANY MANNER ON OTHER PROJECTS OR EXTENSIONS TO THIS PROJECT WITHOUT THE PRIOR WRITTEN CONSENT OF STARBUCKS CORPORATION. THESE DRAWINGS AND SPECIFICATIONS ARE INTENDED TO EXPRESS DESIGN INTENT FOR A PROTOTYPICAL STARBUCKS STORE (WHICH IS SUBJECT TO CHANGE AT ANYTIME) AND DO NOT REFLECT ACTUAL SITE CONDITIONS. NEITHER PARTY SHALL HAVE ANY OBLIGATION NOR LIABILITY TO THE OTHER (EXCEPT STATED ABOVE) UNTIL A WRITTEN AGREEMENT IS FULLY EXECUTED BY BOTH PARTIES.

STARBUCKS TEMPLATE VERSION: i2021.07.23



*Lee S. Weintraub*

**ZIMMERMAN  
WEINTRAUB  
ASSOCIATES**

PROJECT NAME:  
**I-25 & PASEO DEL NORTE  
BOULEVARD NE**

PROJECT ADDRESS:  
**8101 SAN PEDRO DRIVE NE  
ALBUQUERQUE, NM 87113**

ISSUE DATE: 06-03-2022  
DESIGN MANAGER: MELISSA LEE  
PRODUCTION DESIGNER: ZWA - J. YANG  
CHECKED BY: MELISSA LEE

Revision Schedule				
Rev	Date	By	Description	
4	03/22/23	JY	Exterior Material Rev	

SHEET TITLE:  
**BUILDING EXTERIOR  
ELEVATIONS**

SCALE: AS SHOWN

SHEET NUMBER:

A201



GRAPHICS AND ARTWORK SCHEDULE - "G"					
DESIGN ID	COUNT	DESCRIPTION	FURN. BY	INST. BY	COMMENTS
GRAPHICS - OTHER					
11135	1	RESTROOM SIGN UNISEX ACCESSIBLE	SB	GC	

CASEWORK FINISH SCHEDULE			
ENGINE ZONE	MATERIAL DESCRIPTION	FINISH CODE	COMMENTS
COMPOSITE - BRUSHED WARM GREY			
CABINETS - DT POS CUBBY	COMPOSITE - BRUSHED WARM GREY	CP0056	
CABINETS - EXTERIOR	COMPOSITE - BRUSHED WARM GREY	CP0056	
COUNTERTOPS - BACKBAR	COMPOSITE - BRUSHED WARM GREY	CP0056	
METAL - FLAT BLACK POWDERCOAT			
FRAMING AND HARDWARE	METAL - FLAT BLACK POWDERCOAT	MT0028	
METAL - STAINLESS STEEL - BRUSHED			
CABINETS - UNDERCOUNTER	METAL - STAINLESS STEEL - BRUSHED	#4 BRUSHED 16GA	
COUNTERTOPS - HAND SINK	METAL - STAINLESS STEEL - BRUSHED	#4 BRUSHED 16GA	
FRAMING AND HARDWARE	METAL - STAINLESS STEEL - BRUSHED	#4 BRUSHED 16GA	
PLASTIC - BLACK			
CABINETS - EXTERIOR	PLASTIC - BLACK		
CABINETS - INTERIOR	PLASTIC - BLACK		
PLASTIC - WHITE HDPE			
CABINETS - INTERIOR	PLASTIC - WHITE HDPE	PL0043	

SPECIALTY EQUIPMENT SCHEDULE - "E"					
DESIGN ID	COUNT	DESCRIPTION	FURN. BY	INST. BY	COMMENTS
COOLING					
10267	2	FRIDGE UNDERCOUNTER 1 DOOR - 27IN 685MM	SB	GC	
13682	2	FREEZER REACH IN 2 DOOR - 54IN 1370MM	SB	GC	
20011	1	FRIDGE NITRO 2 TAP JT NITCOM RH	SB	GC	KIT INCLUDES UNDERCOUNTER FRIDGE, FONT, TRAY, AND TUBING
EQUIPMENT					
15186	1	DISHWASHER LXER ADVANSYS	SB	GC	
17564	1	BLENDER PITCHER RINSER WITH SENSOR	SB	GC	
21679	1	NITROGEN GENERATOR ELEMENT COMPACT	SB	GC	
ICE					
10344	1	ICE - BIN DROP IN 90LB 40KG	SB	GC	
18029	1	ICE - BIN B110	SB	GC	BPF-1 ADAPTER KIT (011076103) REQUIRED WHEN PAIRING WITH 30" (760MM) ICE MACHINES
18846	1	ICE - MACHINE CIM1446HR SERIES REMOTE COOLED	SB	GC	
19278	1	ICE - BIN DROP IN 45LB 20KG HORIZONTAL	SB	GC	
OTHER					
10099	1	RESTROOM TOILET PAPER HOLDER	SB	GC	
10172	1	RESTROOM SEAT COVER DISPENSER	SB	GC	
10179	1	HAND DRYER SURFACE MOUNTED	SB	GC	
10384	1	DIAPER CHANGING STATION HORIZONTAL	SB	GC	
10501	1	FIRE EXTINGUISHER	GC	GC	
10769	1	RESTROOM GRAB BAR VERTICAL - 18IN 455MM	SB	GC	
10859	1	RESTROOM GRAB BAR - 48IN 1220MM	SB	GC	
10862	1	RESTROOM GRAB BAR - 36IN 915MM	SB	GC	
10947	1	SOAP DISPENSER WALL MOUNTED	SB	GC	
10977	1	PAPER TOWEL DISPENSER FULL SIZE	SB	GC	
11115	2	SOAP DISPENSER SINK MOUNTED	SB	GC	
20403	6	KEG - 3GAL	SB	GC	
21988	1	HAND DRYER BACK PANEL	SB	GC	
22627	1	NITRO 2 TAP HANDLE WITH BADGE AND MOUNT KIT	SB	GC	JOE TAP, FOR USE AT BACKBAR NITRO FONT
STORAGE					
10222	1	WIRE SHELF GRID AT SINK	SB	GC	
11153	3	WIRE SHELF - 48IN 1220MM	SB	GC	SPG MODEL NUMBER WST964C
13578	2	DISHWARE DRYING RACK - 21IN 535MM	SB	GC	
17639	1	WORKROOM CART - 24IN 610MM	SB	GC	
19476	2	5 COMP LOCKER - 12IN 305MM	SB	GC	
22213	2	WIRE SHELF SET POST MOUNT - 24IN 610MM	SB	GC	SPG MODEL NUMBER WST1883C
X4000	1	WIRE SHELF - 24IN 610MM	SB	GC	SPG MODEL NUMBER WST1889C
X4001	1	WIRE SHELING POST MOUNT - 48IN 1220MM	SB	GC	SPG MODEL NUMBER WST1888C

CASEWORK SCHEDULE - "C"					
DESIGN ID	COUNT	DESCRIPTION	FURN. BY	INST. BY	COMMENTS
CABINET					
17580	2	CABINET - CBE TEA SHELF - 29IN 735MM - FLAT BLACK MT0028	SB	GC	
19281	1	CABINET - ESPRESSO ICE BIN STAINLESS - 20IN 510MM	SB	GC	
21890	25	CABINET - SIDE PANEL	SB	GC	
21891	7	CABINET - BOTTOM SHELF - 15IN 380MM	SB	GC	
21892	5	CABINET - BACK PANEL - 15IN 380MM	SB	GC	
21893	3	CABINET - ADJUSTABLE SHELF - 15IN 380MM	SB	GC	
21894	6	CABINET - DOOR - 15IN 380MM	SB	GC	
21895	4	CABINET - DOOR TRASH - 15IN 380MM	SB	GC	
21896	1	CABINET - DRAWER - 15IN 380MM	SB	GC	
21898	1	CABINET - BOTTOM SHELF - 18IN 455MM	SB	GC	
21901	3	CABINET - DOOR - 18IN 455MM	SB	GC	
21902	1	CABINET - BOTTOM SHELF - 30IN 760MM	SB	GC	
21904	2	CABINET - ADJUSTABLE SHELF - 30IN 760MM	SB	GC	
21907	3	CABINET - END CAP BACKBAR	SB	GC	
21908	1	CABINET - FILLER PANEL - VARIABLE LENGTH	SB	GC	
21909	1	CABINET - DT POS UPPER CUBBY - 32IN 815MM	SB	GC	
21910	1	CABINET - FRENCH CLEAT - VARIABLE LENGTH	SB	GC	
21912	1	CABINET - BACK PANEL FOR POS - 30IN 760MM	SB	GC	
21913	3	CABINET - EQUIPMENT MOUNTING PANEL	SB	GC	
22632	1	CABINET - CBE DRY INCLUSION SHELF - 44IN 1120MM - FLAT BLACK MT0028	SB	GC	
COUNTERTOP					
21919	5	COUNTERTOP - FILLER BACKBAR - VARIABLE LENGTH	SB	GC	
21925	1	COUNTERTOP - BACKBAR - 15IN 380MM	SB	GC	
22329	1	COUNTERTOP - BREW - RF - 90IN 2285MM	SB	GC	
22334	1	COUNTERTOP - CBE - LF - 98IN 2490MM	SB	GC	
22351	1	COUNTERTOP - ESPRESSO BACKBAR - 118IN 2995MM	SB	GC	
22362	1	COUNTERTOP - DT POS - LF - 76IN 1930MM	SB	GC	
22376	1	COUNTERTOP - WARMING - LF - 92IN 2335MM	SB	GC	
22395	1	COUNTERTOP - HAND SINK LOW SPLASH - 15IN 380MM	SB	GC	
X5000	1	COUNTERTOP - NITRO	SB	GC	
X5001	1	COUNTERTOP - WALK-UP WINDOW	SB	GC	CONCEALED ANGLE SUPPORTS ATTACHED TO WALL TO SUPPORT COUNTERTOP. GC TO VEIFY LENGTH OF EXISTING WINDOW OPENING AND MATCH CASEWORK LENGTH.
DIEWALL					
21885	8	DIEWALL - FRAMING - VARIABLE LENGTH	SB	GC	
21888	30	DIEWALL - SUPPORT LEG	SB	GC	
OTHER					
11155	2	ESPRESSO MACHINE PUMP MOUNT - 10X10IN 255X255MM	SB	GC	
21914	7	FRIDGE STOP BRACKET SET	SB	GC	

FURNITURE SCHEDULE - "F"					
DESIGN ID	COUNT	DESCRIPTION	FURN. BY	INST. BY	COMMENTS
MIRROR					
10342	1	MIRROR - RESTROOM - 18X36IN 455X915MM	SB	GC	
OTHER					
10756	1	COAT HOOK 1 PRONG SQUARE - 2IN 50MM - SST	SB	GC	
WINDOW TREATMENT					
22486	3	ROLLER SHADE - DARK BROWN - 5PC OPEN	SB	GC	

WALL TREATMENT (AREA) SCHEDULE - "Q"					
DESIGN ID	AREA	DESCRIPTION	FURN. BY	INST. BY	COMMENTS
PLASTIC					
11469	774 SF	FRP - WHITE	GC	GC	LOCALLY SOURCED
TILE					
20219	143 SF	TILE - LUNAR - TITANIUM - 6X24IN 150X600MM	SB	GC	GROUT: MAPEI - 09 GRAY, OR EQUAL
20220A	291 SF	TILE - LUNAR - TITANIUM - 24X24IN 600X600MM	SB	GC	TILE TO BE CUT TO 12X24IN IN FIELD. GROUT: MAPEI - 09 GRAY, OR EQUAL.
20249	57 SF	TILE - COLOR STUDIO - SAGE - SQUARE MOSAIC - 12X12IN 300X300MM SHEET	SB	GC	GROUT: MAPEI - 11 SAHARA BEIGE, OR EQUAL
WOOD					
X9001	278 SF	WOOD - NEWTECHWOOD - 5-1/2IN ALL WEATHER PLANKS - VERTICAL - BRAZILIAN IPE	SB	GC	EXTERIOR FINISH APPLICATION. SEE EXTERIOR ELEVATIONS FOR MORE INFORMATION.

WALL BASE SCHEDULE - "B"					
DESIGN ID	LENGTH	DESCRIPTION	FURN. BY	INST. BY	COMMENTS
TILE BASE					
19795	179' - 4 1/4"	POLYVINYL FLOOR TILE - ECOGRIP - PEWTER	GC	GC	
X9200	24' - 10"	SCHLUTER STRIP - DILEX - HKU - STAINLESS STEEL	GC	GC	
X9201	8' - 11 1/4"	METAL BASE - 3IN - MT0028	GC	GC	TOP SET METAL BASE. METAL TO BE POWDER-COATED BLACK.

FLOOR TREATMENT SCHEDULE - "T"					
DESIGN ID	AREA	DESCRIPTION	FURN. BY	INST. BY	COMMENTS
PLASTIC					
19795	621 SF	POLYVINYL FLOOR TILE - ECO-GRIP - PEWTER	GC	GC	
TILE					
20220	48 SF	TILE - LUNAR - TITANIUM - 24X24IN 600X600MM	SB	GC	GROUT: MAPEI - 09 GRAY, OR EQUAL

PAINT SCHEDULE					
DESIGN ID	DESCRIPTION	LRV	FURN. BY	INST. BY	COMMENTS
20419	SW6141 SOFTER TAN, OR EQUIVALENT	60	GC	GC	SW USE PRIMER CP-1; NCS - S 2010-Y10R; AKZO NOBEL - 40YY 60/103
X9000	SW6199 RARE GRAY, OR EQUIVALENT	38	GC	GC	

CEILING TREATMENT SCHEDULE - "U"					
DESIGN ID	AREA	DESCRIPTION	FURN. BY	INST. BY	COMMENTS
19734	39 SF	ACT - CALLA - 2X4FT	GC	GC	WHITE; GC TO VERIFY EXISTING T-BAR GRID COMPATIBILITY; FOR ORDERING CONTACT DEB PICKENS AT DPLPICKENS@ARMSTRONGCEILINGS.COM

RESPONSIBILITY LEGEND

GC GENERAL CONTRACTOR  
LL LANDLORD  
SB STARBUCKS

FOR  
ALBUQUERQUE  
OFFICIAL USE  
ONLY

STARBUCKS®  
2401 UTAH AVENUE SOUTH  
SEATTLE, WASHINGTON 98134  
(206) 318-1575

THESE DRAWINGS AND THE PROJECT MANUAL ARE  
CONFIDENTIAL AND SHALL REMAIN THE SOLE PROPERTY OF  
STARBUCKS CORPORATION, WHICH IS THE OWNER OF THE  
COPYRIGHT IN THIS WORK. THEY SHALL NOT BE REPRODUCED  
(IN WHOLE OR IN PART), SHARED WITH THIRD PARTIES OR  
USED IN ANY MANNER ON OTHER PROJECTS OR EXTENSIONS  
TO THIS PROJECT WITHOUT THE PRIOR WRITTEN CONSENT OF  
STARBUCKS CORPORATION. THESE DRAWINGS AND  
SPECIFICATIONS ARE INTENDED TO EXPRESS DESIGN INTENT  
FOR A PROTOTYPICAL STARBUCKS STORE (WHICH IS SUBJECT  
TO CHANGE AT ANYTIME) AND DO NOT REFLECT ACTUAL SITE  
CONDITIONS. NEITHER PARTY SHALL HAVE ANY OBLIGATION  
NOR LIABILITY TO THE OTHER (EXCEPT STATED ABOVE) UNTIL A  
WRITTEN AGREEMENT IS FULLY EXECUTED BY BOTH PARTIES.

STARBUCKS TEMPLATE VERSION: i2021.07.23

STATE OF NEW MEXICO  
LEE S.  
WEINTRAUB  
NO. 004945  
REGISTERED ARCHITECT

*Lee S. Weintraub*

ZIMMERMAN  
WEINTRAUB  
ASSOCIATES

PROJECT NAME:  
I-25 & PASEO DEL NORTE  
BOULEVARD NE

PROJECT ADDRESS:  
8101 SAN PEDRO DRIVE NE  
ALBUQUERQUE, NM 87113

ISSUE DATE: 06-03-2022  
DESIGN MANAGER: MELISSA LEE  
PRODUCTION DESIGNER: ZWA - J. YANG  
CHECKED BY: MELISSA LEE

Revision Schedule

Rev	Date	By	Description
4	03/22/23	JY	Exterior Material Rev

SHEET TITLE:  
SCHEDULES

SCALE: AS SHOWN

SHEET NUMBER:  
1601