

# ADMINISTRATIVE AMENDMENT

FILE #: \_\_\_\_\_ PROJECT #: \_\_\_\_\_

\_\_\_\_\_

\_\_\_\_\_

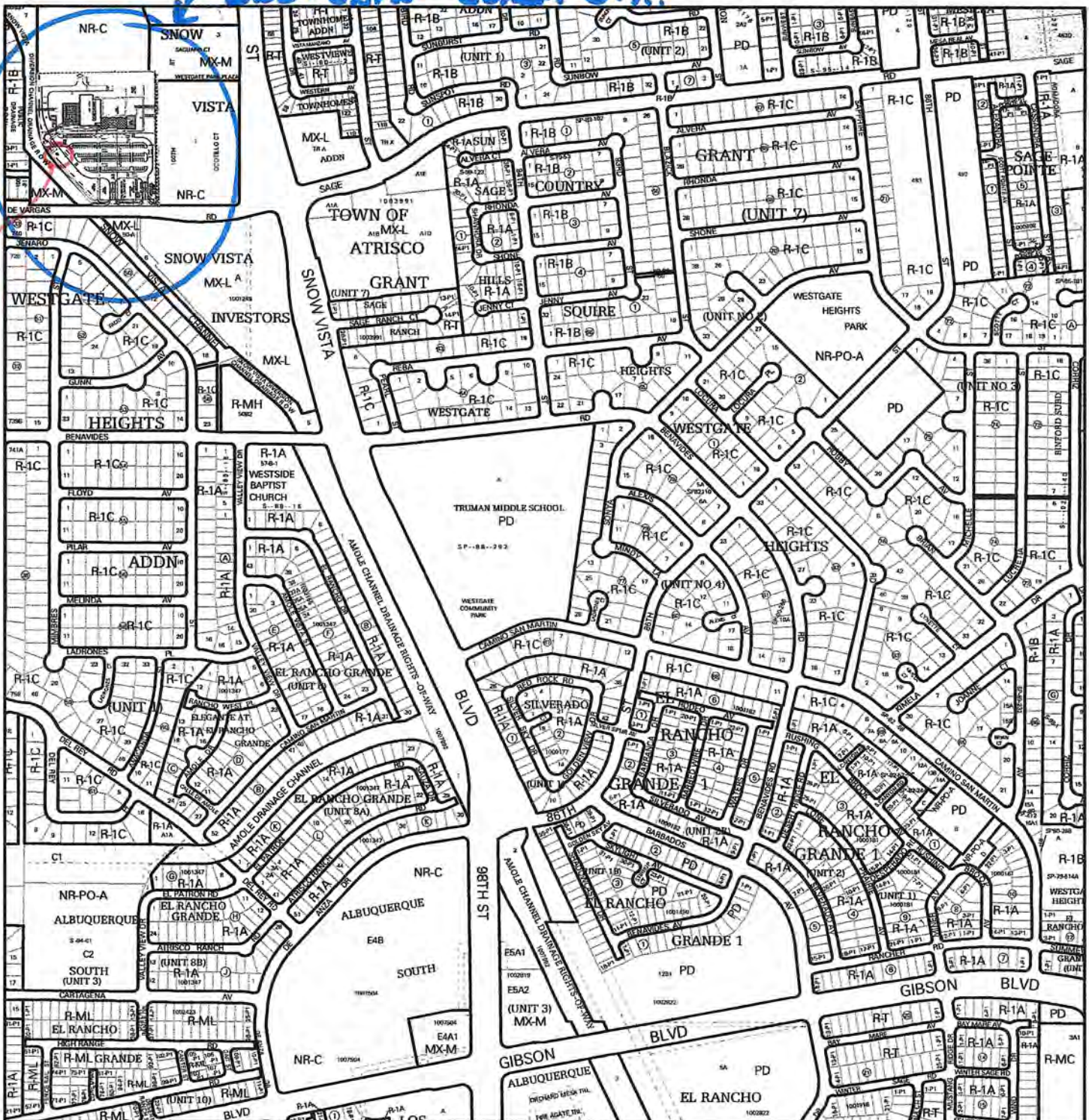
\_\_\_\_\_

\_\_\_\_\_

\_\_\_\_\_

\_\_\_\_\_  
APPROVED BY

\_\_\_\_\_  
DATE

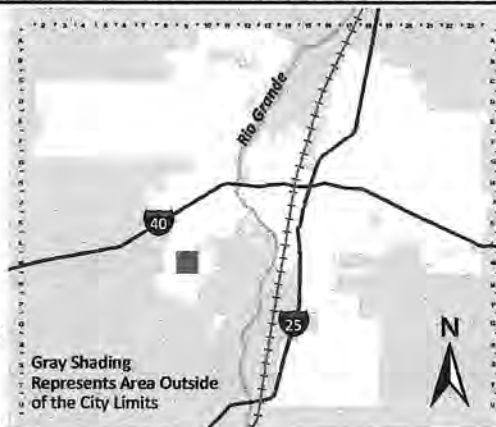


For more details about the Integrated Development Ordinance visit: <http://www.cabq.gov/planning/codes-policies-regulations/integrated-development-ordinance>

# IDO Zone Atlas May 2018



IDO Zoning information as of May 17, 2018  
The Zone Districts and Overlay Zones  
are established by the  
Integrated Development Ordinance (IDO).

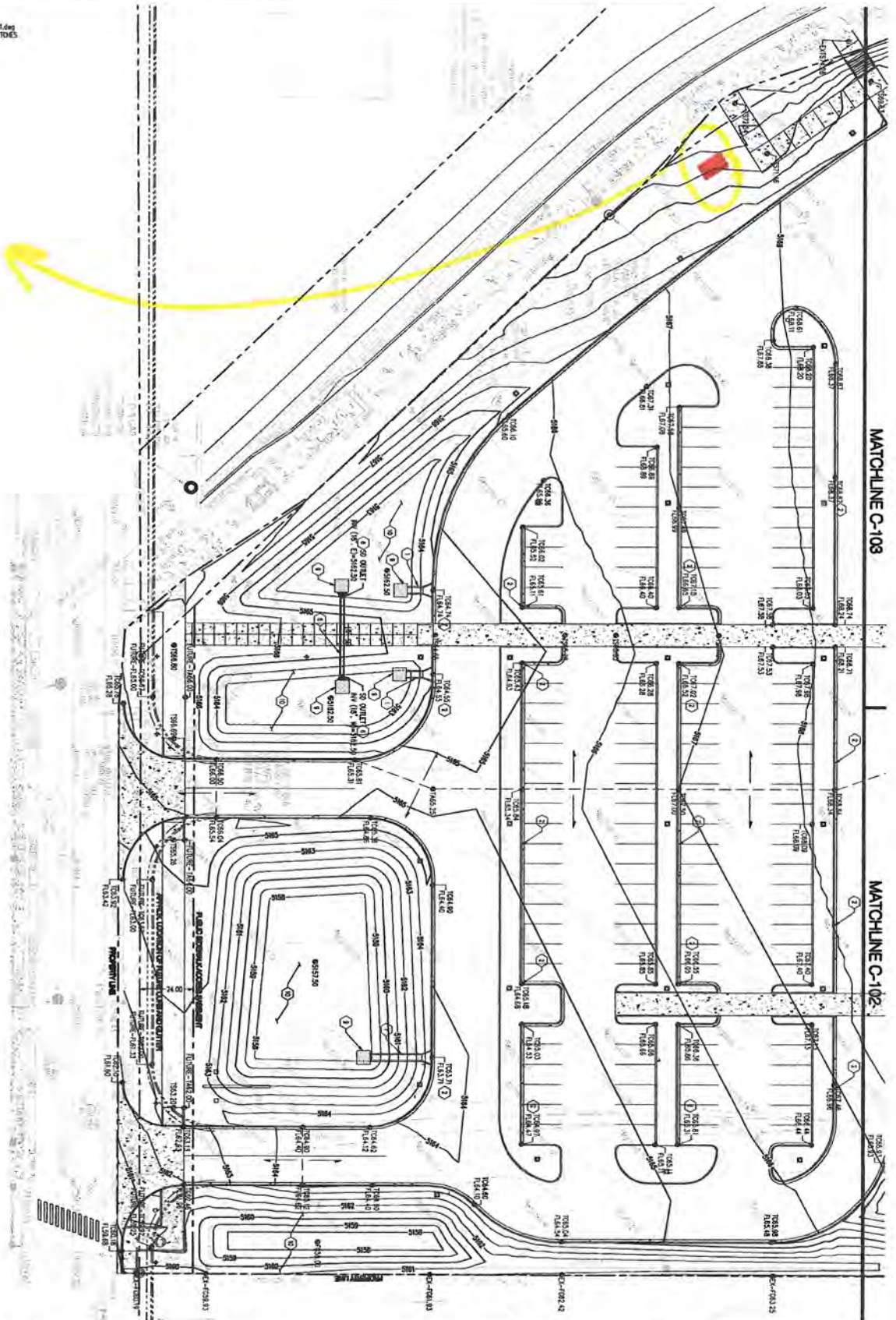


Zone Atlas Page:  
**M-09-Z**

- Easement
- Escarpment
- Petroglyph National Monument
- Areas Outside of City Limits
- Airport Protection Overlay (APO) Zone
- Character Protection Overlay (CPO) Zone
- Historic Protection Overlay (HPO) Zone
- View Protection Overlay (VPO) Zone

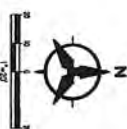
0 250 500 1,000 Feet





MATCHLINE C-102

- GRADING KEYED NOTES\***
1. INSTALL CONCRETE INSHOUL CHANNEL, PER JOB STD. DIM. 2200.
  2. INSTALL CONCRETE CURB OPENING
  3. INSTALL RIP-RAP SHALE
  4. INSTALL EMBANKMENT OVERFLOW WEIR
  5. INSTALL STORM DRAIN
  6. INSTALL STORM DRAIN END SECTION
  7. RETAINING WALL
  8. INSTALL LANDSCAPED BERM
  9. INSTALL RIP-RAP PAD
  10. RETENTION POND
- \*NOT ALL KEYED NOTES ARE USED ON THIS SHEET



SYMBOL	DESCRIPTION
	1/2" DIA. HOLE
	1/4" DIA. HOLE
	3/8" DIA. HOLE
	1/2" DIA. HOLE
	3/4" DIA. HOLE
	1" DIA. HOLE
	1 1/2" DIA. HOLE
	2" DIA. HOLE
	2 1/2" DIA. HOLE
	3" DIA. HOLE
	3 1/2" DIA. HOLE
	4" DIA. HOLE
	4 1/2" DIA. HOLE
	5" DIA. HOLE
	5 1/2" DIA. HOLE
	6" DIA. HOLE
	6 1/2" DIA. HOLE
	7" DIA. HOLE
	7 1/2" DIA. HOLE
	8" DIA. HOLE
	8 1/2" DIA. HOLE
	9" DIA. HOLE
	9 1/2" DIA. HOLE
	10" DIA. HOLE
	10 1/2" DIA. HOLE
	11" DIA. HOLE
	11 1/2" DIA. HOLE
	12" DIA. HOLE
	12 1/2" DIA. HOLE
	13" DIA. HOLE
	13 1/2" DIA. HOLE
	14" DIA. HOLE
	14 1/2" DIA. HOLE
	15" DIA. HOLE
	15 1/2" DIA. HOLE
	16" DIA. HOLE
	16 1/2" DIA. HOLE
	17" DIA. HOLE
	17 1/2" DIA. HOLE
	18" DIA. HOLE
	18 1/2" DIA. HOLE
	19" DIA. HOLE
	19 1/2" DIA. HOLE
	20" DIA. HOLE
	20 1/2" DIA. HOLE
	21" DIA. HOLE
	21 1/2" DIA. HOLE
	22" DIA. HOLE
	22 1/2" DIA. HOLE
	23" DIA. HOLE
	23 1/2" DIA. HOLE
	24" DIA. HOLE
	24 1/2" DIA. HOLE
	25" DIA. HOLE
	25 1/2" DIA. HOLE
	26" DIA. HOLE
	26 1/2" DIA. HOLE
	27" DIA. HOLE
	27 1/2" DIA. HOLE
	28" DIA. HOLE
	28 1/2" DIA. HOLE
	29" DIA. HOLE
	29 1/2" DIA. HOLE
	30" DIA. HOLE
	30 1/2" DIA. HOLE
	31" DIA. HOLE
	31 1/2" DIA. HOLE
	32" DIA. HOLE
	32 1/2" DIA. HOLE
	33" DIA. HOLE
	33 1/2" DIA. HOLE
	34" DIA. HOLE
	34 1/2" DIA. HOLE
	35" DIA. HOLE
	35 1/2" DIA. HOLE
	36" DIA. HOLE
	36 1/2" DIA. HOLE
	37" DIA. HOLE
	37 1/2" DIA. HOLE
	38" DIA. HOLE
	38 1/2" DIA. HOLE
	39" DIA. HOLE
	39 1/2" DIA. HOLE
	40" DIA. HOLE
	40 1/2" DIA. HOLE
	41" DIA. HOLE
	41 1/2" DIA. HOLE
	42" DIA. HOLE
	42 1/2" DIA. HOLE
	43" DIA. HOLE
	43 1/2" DIA. HOLE
	44" DIA. HOLE
	44 1/2" DIA. HOLE
	45" DIA. HOLE
	45 1/2" DIA. HOLE
	46" DIA. HOLE
	46 1/2" DIA. HOLE
	47" DIA. HOLE
	47 1/2" DIA. HOLE
	48" DIA. HOLE

LEE GAWELSKY ARCHITECTS P.C.

**WESTGATE COMMUNITY CENTER**

10001 De Vargas Road SW, Albuquerque, New Mexico 871

Project #	
Date	12/20/2011

SITE DEVELOPMENT PLAN FOR BUILDING PERMIT

DRB PROJECT NO.:

## GRADING AND DRAINAGE - SOUTH

100

By	Post
1998	

SITE DEVELOPMENT PLAN

C-10

---







