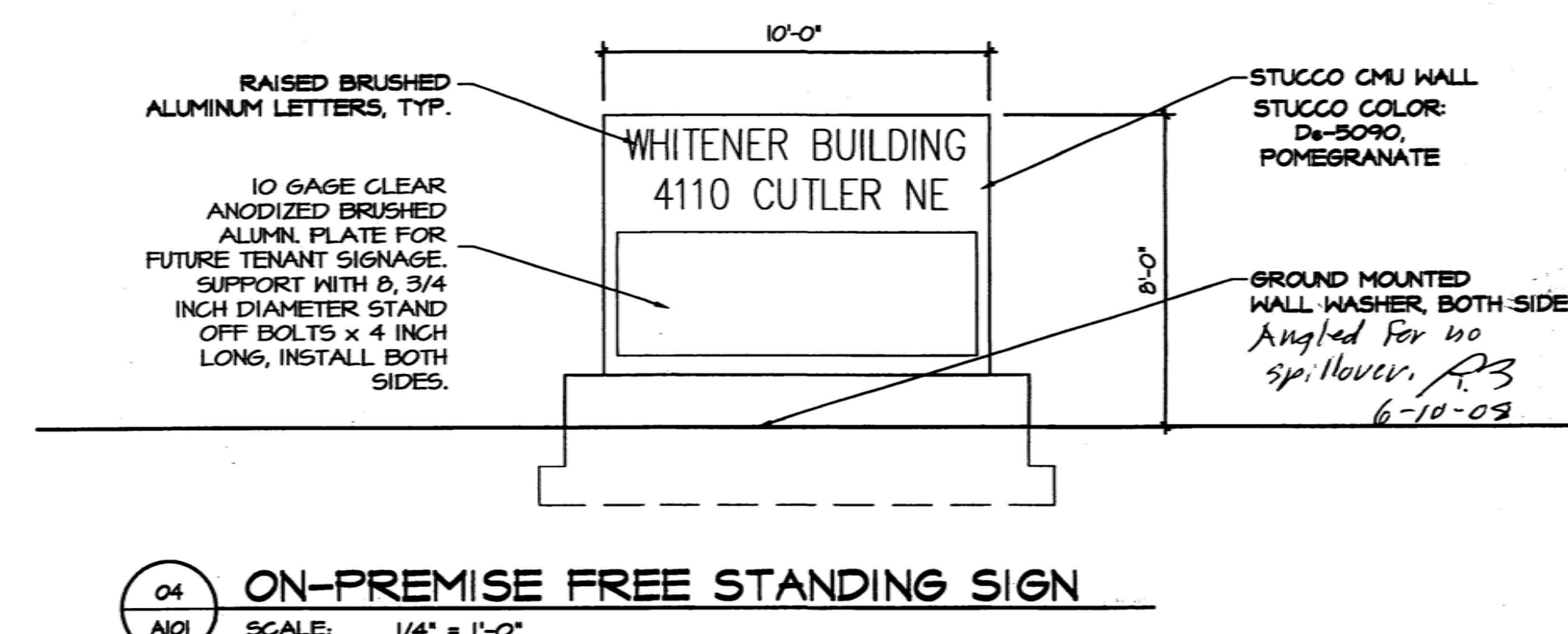
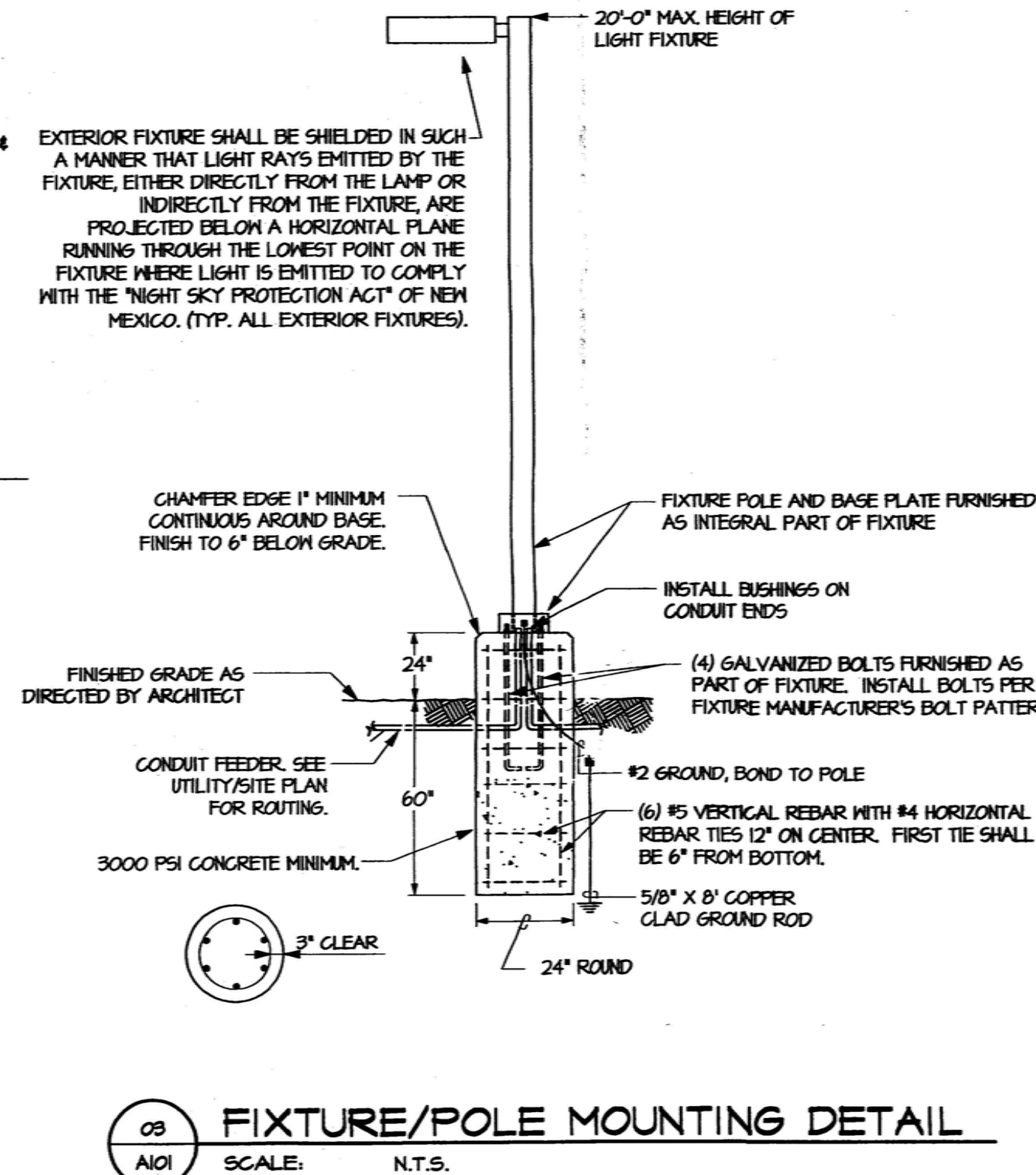
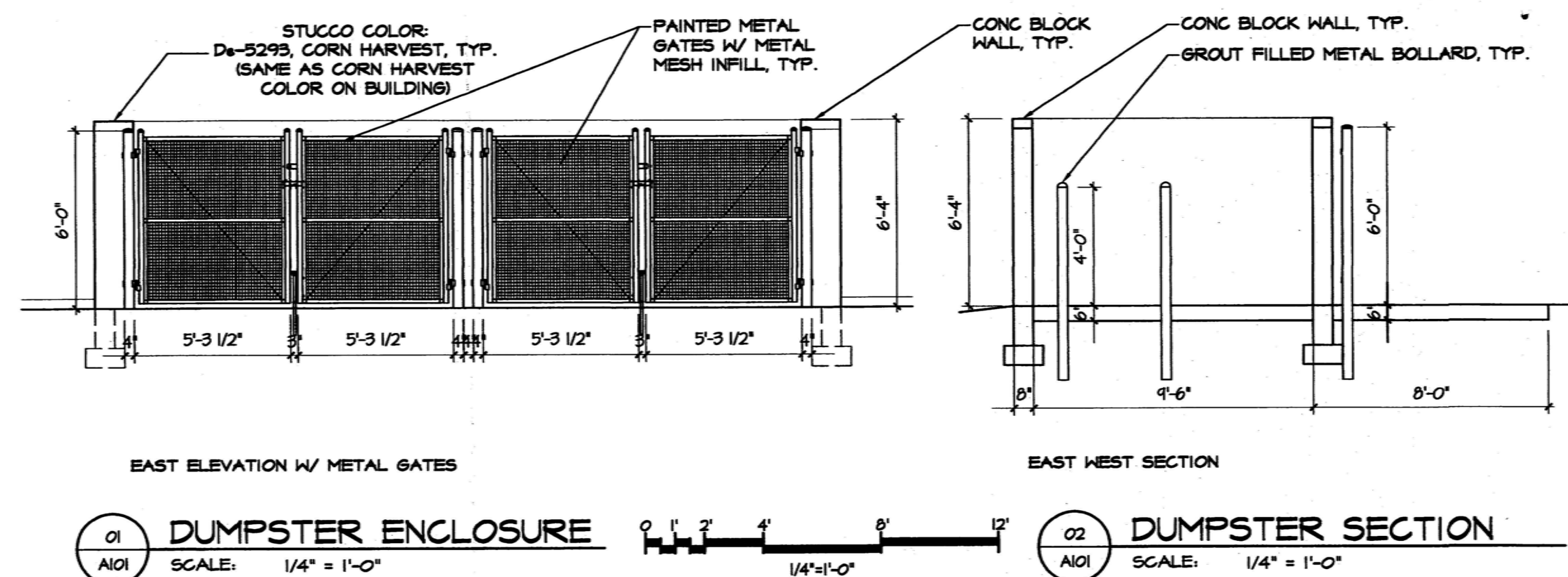


ADMINISTRATIVE AMENDMENT

FILE #: _____ PROJECT #: _____

APPROVED BY

DATE



PARKING CALCULATIONS:

GROUND FLOOR: NET LEASEABLE SPACE = 5867 SF / 200 = 30 SPACES REQUIRED - SECTION 14-16-3-1, (21)	
UPPER FLOOR: NET LEASEABLE SPACE = 5967 SF / 300 = 20 SPACES REQUIRED - SECTION 14-16-3-1, (21)	
TOTAL SPACES REQUIRED = 50	PROVIDED: 51
TOTAL ACCESSIBLE SPACES REQUIRED: 3 (SECTION 14-16-3-1, E5)	
TOTAL ACCESSIBLE SPACES PROVIDED: 3 (2 STANDARD, 1 VAN)	
BICYCLE SPACES REQUIRED	
NON-RESIDENTIAL USE 1 SPACE FOR EVERY 20 PARKING SPACES: 3 SPACES REQUIRED - SECTION 14-16-3-1 B(1)	
TOTAL SPACES PROVIDED: 3	

