

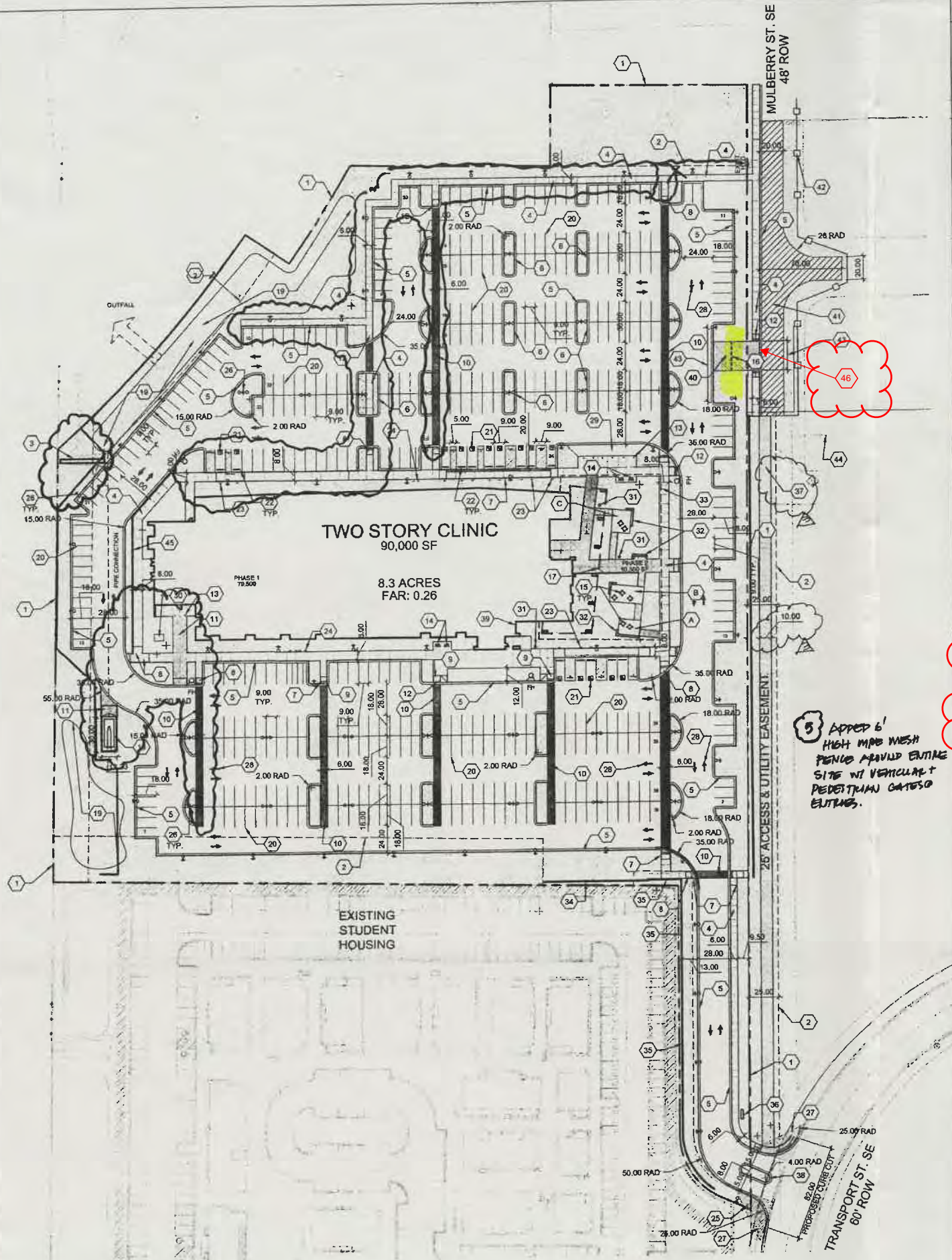
ADMINISTRATIVE AMENDMENT

FILE #: _____ PROJECT #: _____

APPROVED BY

DATE

INTERSTATE 25



5 ADDED 6' HIGH MPB WESH PERIOD AROUND ENTIRE SITE W/ VERTICAL PEDESTAL GATES & ENTRANCES.

GENERAL SHEET NOTES

- THIS SUBMITTAL ILLUSTRATES THE DESIGN AND DEVELOPMENT INTENT FOR A NEW CLINIC AND ASSOCIATED SITE, LANDSCAPE, GRADING AND UTILITY IMPROVEMENTS.
- SITE LIGHTING WILL CONSIST OF A COMBINATION OF BUILDING MOUNTED LIGHT FIXTURES AND POLE MOUNTED FIXTURES. SEE PLAN FOR POLE FIXTURES.
- COMPLEMENTARY LIGHT COLORED, METAL OR PAINTED METAL FINISHES.
- TWO PHASES ARE INDICATED IN THE SITE PLAN. THE MAJORITY OF BUILDING AND SITE DEVELOPMENT WILL OCCUR IN PHASE 1. PHASE 2 INCLUDES DEVELOPMENT OF ADDITIONAL BUILDING SQUARE FOOTAGE IN THE CONFIGURATION INDICATED ON THE PLANS. SEE SITE DETAILS AND LANDSCAPE DETAILS FOR SITE DESIGN INFORMATION FOR PHASE 1 AROUND THE BUILDINGS MAIN ENTRANCE.
- MECHANICAL UNITS WILL BE PLACED ON THE ROOF. MECHANICAL UNITS WILL BE SCREENED FROM VIEW WITH A COMBINATION OF STRATEGIC PLACEMENT AND ARCHITECTURAL SCREENING.
- ALL IMPROVEMENTS LOCATED IN THE RIGHT OF WAY MUST BE INCLUDED ON A WORK ORDER.
- STANDARD PARKING SPACES ARE 9'-0" WIDE, 18'-0" DEEP, TYPICAL REFER TO DETAIL ON SDP 1.2 FOR ACCESSIBLE PARKING STALL DIMENSIONS.

SHEET KEYED NOTES

- PROPERTY LINE
- EASEMENT LINE
- EXISTING BILLBOARD SIGN TO REMAIN
- CONCRETE SIDEWALK
- CONCRETE CURB AND GUTTER
- CONCRETE FLUSH CURB
- CONCRETE HEADER CURB
- CONCRETE ACCESSIBLE RAMP, TYPE A PER COA DPM STANDARDS
- CONCRETE ACCESSIBLE RAMP, TYPE B PER COA DPM STANDARDS
- HEAVY DUTY DECORATIVE CONCRETE PAVING, COLOR TBD
- REINFORCED CONCRETE PAVING IN SERVICE YARD, COLOR NONE
- DETECTABLE WARNING SURFACE
- BOLLARD, COLOR TBD
- BIKE RACKS
- TABLE AND CHAIRS
- EMERGENCY ONLY ACCESS GATE WITH KNOX BOX
- OVERHEAD SEE ARCHITECTURAL SHEETS
- COMPACTOR, 34 CU. YD. CAPACITY, SEE A1/SDP-1.2 FOR ENCLOSURE GATE ELEVATION
- POND
- PARKING STRIPING
- ADA PAVEMENT MARKING, SEE A5/SDP-1.2
- PARKING BUMPER
- ACCESSIBLE PARKING SIGN, SEE B1/SDP-1.2
- MOTORCYCLE PARKING SIGN, SEE B1/SDP-1.2
- STOP SIGN, SEE B1/SDP-1.2
- SITE LIGHTING, SEE LEGEND
- CLEAR SIGHT TRIANGLE - LANDSCAPING, FENCING, AND SIGNING WILL NOT INTERFERE WITH CLEAR SIGHT REQUIREMENTS. THEREFORE SIGNS, WALLS, TREES, AND SHRUBBERY BETWEEN 3 AND 8 FEET TALL (AS MEASURED FROM THE GUTTER PAN) WILL NOT BE ACCEPTABLE IN THE CLEAR SIGHT TRIANGLE.
- PAVEMENT ARROWS
- DROP OFF AREA
- TRANSFORMER
- LITTER RECEPTACLE
- SEATWALL
- PHASE 2 BOUNDARY
- 5' TALL CMU WITH STUCCO SCREEN WALL
- 8' TALL CMU WITH STUCCO SCREEN WALL
- DOUBLE SIDED MONUMENT SIGN, SEE A3/SDP-1.2
- 10' WIDE ASPHALT TRAIL TO BE PRIVATELY MAINTAINED BY ADJACENT PROPERTY OWNER
- LOW PROFILE MOUNTAIN TABLE CURB
- FIRE DEPARTMENT DRIVE
- EMERGENCY DRIVE (CONCRETE PAVEMENT) WITH MOUNTABLE CURB
- NEW ROADWAY IN PUBLIC RIGHT OF WAY
- GUARD RAIL OR JERSEY BARRIER
- MOUNTABLE CURB, MARKED "FIRE LANE - NO PARKING"
- WATER DRAINAGE
- 5' TALL CMU RETAINING WALL WITH STUCCO
- EMERGENCY DRIVE ENTRANCE TO BE UTILIZED BY THE PUBLIC DURING REGULAR BUSINESS OPERATING HOURS AND EMERGENCY PERSONAL DURING OFF HOURS. (E) CONCRETE PAVEMENT, KNOX BOX, AND CURBS TO REMAIN.

LEGEND

- PROPERTY LINE
- EXISTING EASEMENT (ALL EASEMENTS ARE EXISTING)
- 16'-0" MAX HT. POLE LIGHT PER SECTION 14-16-3-9 OF ZONING CODE, DOUBLE, FULL CUT-OFF
- 16'-0" MAX HT. POLE LIGHT PER SECTION 14-16-3-9 OF ZONING CODE, SINGLE, FULL CUT-OFF
- FIRE HYDRANT
- STABILIZED CRUSHER FINES
- REINFORCED CONCRETE PAVING
- DECORATIVE CONCRETE PAVING, COLOR TBD
- HEAVY DUTY DECORATIVE CONCRETE PAVING, COLOR TBD
- LANDSCAPE AREA, SEE SDP-2.1
- 10' WIDE ASPHALT TRAIL

SITE PATIO / AMENITIES

- A PATIO A - 245 SF
- B PATIO B - 420 SF
- C PATIO C - 320 SF

PROJECT NUMBER:	1009089
APPLICATION NUMBER:	EPC Site Development Plan-Building Permit
Is an Infrastructure List Required? (x) Yes () No If yes, then a set of approved DRC plans with a work order is required for any construction within Public Right-of-Way or for construction of public improvements.	
DRB SITE DEVELOPMENT PLAN APPROVAL:	
<i>Rajul M. Mehta</i>	10/28/15
DATE	
TRAFFIC ENGINEER, TRANSPORTATION DIVISION	
<i>Mark Adams</i>	10/28/15
DATE	
UTILITIES DIVISION	
<i>Carl S. Dumont</i>	10-28-15
DATE	
PARKS AND RECREATION DEPARTMENT	
<i>John</i>	1/19/16
DATE	
CITY ENGINEER	
<i>Cal Williams</i>	12-17-15
DATE	
SOLID WASTE MANAGEMENT	
<i>Kate Monahan</i>	
DATE	
FIRE MARSHALL	
<i>Carl</i>	1-19-16
DATE	
DRB CHAIRPERSON, PLANNING DEPARTMENT	

PROJECT DATA

ADDRESS: 2901 TRANSPORT STREET SE, ALBUQUERQUE, NM 87106
LEGAL DESCRIPTION: TRACT 2, CAPSTONE SUBDIVISION
ZONE ATLAS PAGE: M-15-Z
SITE AREA: 8.3555 ACRES
CURRENT ZONING: SU-1, IF PERMISSIVE USES AND STUDENT HOUSING
PROPOSED ZONING: NO CHANGE
BUILDING FOOTPRINT: 90,000 SF (PHASE 1: 79,500 SF; PHASE 2: 10,500 SF)
LANDSCAPING: REFER TO SHEET SDP-2.1 FOR LANDSCAPE PLAN
OCCUPANCY GROUP: B
CONSTRUCTION TYPE: IIB, FULLY SPRINKLERED

PARKING CALCULATIONS

TOTAL PARKING SPACES REQUIRED PER CODE: MEDICAL OR DENTAL OFFICE, CLINIC: FIVE SPACES FOR EACH DOCTOR = 80 DOCTORS/PROVIDERS = 400 SPACES REQUIRED	
TOTAL PROPOSED PARKING:	445
STANDARD CAR SPACES	15 (12 REQUIRED)
ACCESSIBLE SPACES	400
TOTAL CAR SPACES	
MOTORCYCLE SPACES	6 (5 REQUIRED)
BICYCLE PARKING	28 (24 REQUIRED)



VICINITY MAP
ZONING MAP M-15-Z
0 750 1500'

ARCHITECTURE / DESIGN / INSPIRATION

DEKKER
PERICH
SABATINI

7601 JEFFERSON NE, SUITE 100
ALBUQUERQUE, NM 87109
505.761.9700 / DPSDESIGN.ORG
ARCHITECT

ENGINEER

PROJECT

MULTI-SPECIALTY CLINIC
2901 Transport St. SE
ALBUQUERQUE, NM 87106

REVISIONS	
1	7.27.2015 EPC COMMENTS
2	8.3.2015 EPC COMMENTS
3	10.28.2015 DRB COMMENTS

DRAWN BY: LI
REVIEWED BY: MB
DATE: 10/9/2015

PROJECT NO.: 1
DRAWING NAME: SITE PLAN

ORIGINAL APP'D

SHEET NO.:
SDP 1.1
OF