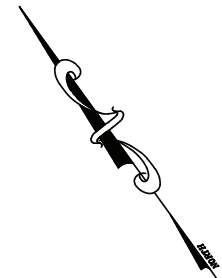


- A** 6'1" x 11'4" S/F LED Wall Sign.
- B** 6'1" x 11'4" S/F LED Wall Sign.
- C** 6'1" x 11'4" S/F LED Wall Sign.
- D** White LED Border Lighting.



SIGN PLACEMENT



SIGN COMPANY
www.FederalHeath.com
160 W. Carmel Drive, Suite 236 Carmel, IN 46032
(317) 581-7790 Fax (317) 581-7783

Manufacturing Facilities:
Oceanside - Eules - Jacksonville - Columbus
Office Locations:
Oceanside - Las Vegas - Laughlin - Idaho Falls
Eules - Jacksonville - Houston - San Antonio
Corpus Christi - Grafton - Milwaukee
Willowbrook - Louisville - Indianapolis - Columbus
Cincinnati - Westerville - Knoxville - Tunica
Atlanta - Tampa - Daytona Beach - Winter Park

Building Quality Signage Since 1901

Revisions:

R1: 7/17/24 KS-Updated elevations

Client Approval/Date:

Landlord Approval/Date:

Account Rep: Steve Maeser

Project Manager: K. Singleton

Drawn By: K. Singleton

UL Underwriters Laboratories Inc. ELECTRICAL TO USE U.L.-48 LISTED COMPONENTS AND SHALL MEET ALL N.E.C. STANDARDS

Project / Location:



SEQ COORS BYPASS NW
AND 7 BAR LOOP RD NW
ALBUQUERQUE-W, NEW MEXICO

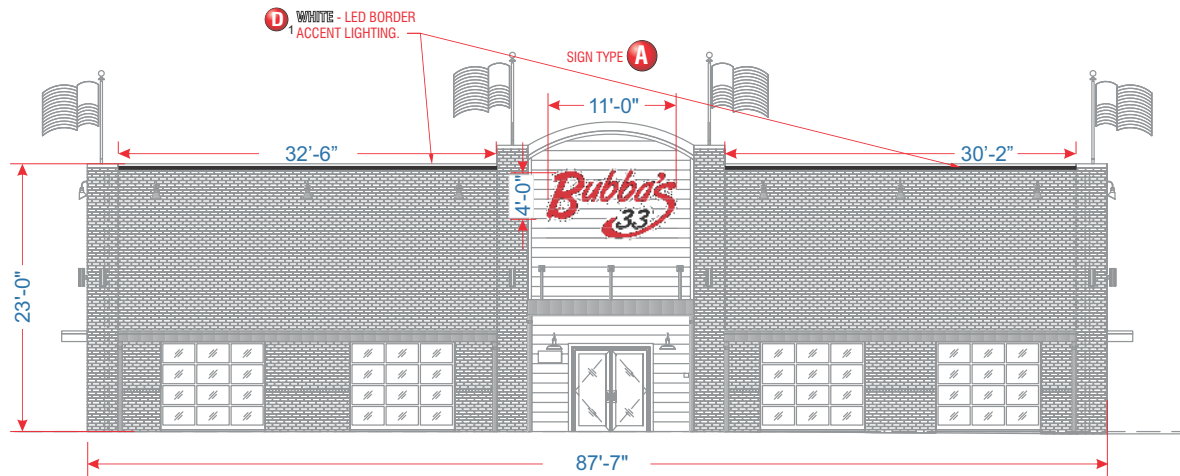
Job Number: 23-64977-10

Date: FEBRUARY 15, 2021

Sheet Number: 1 Of 6

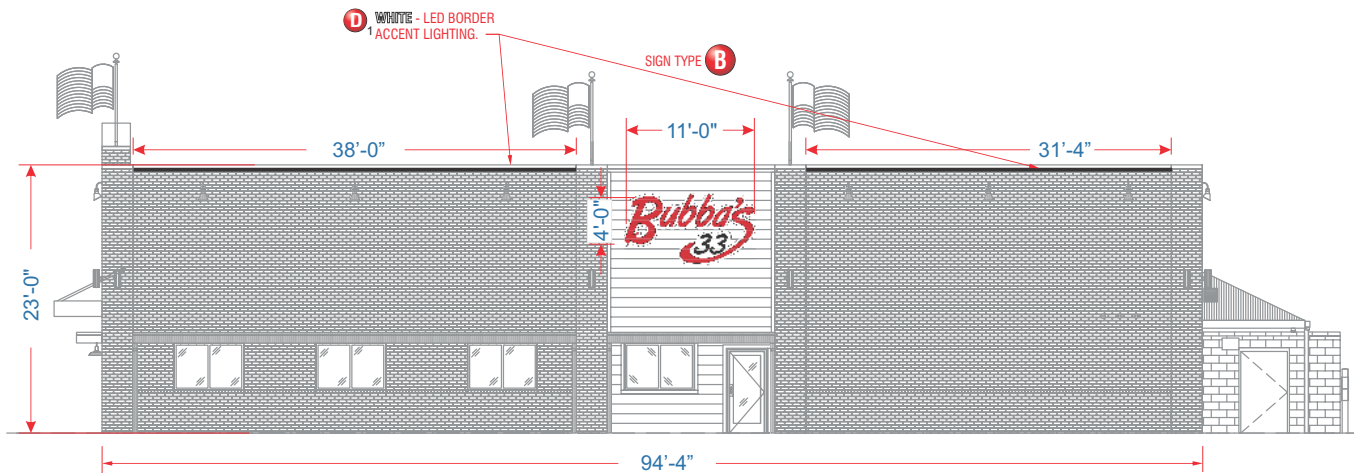
Design Number: 23-64977-10R1

This original drawing is provided as part of a planned project and is not to be exhibited, copied or reproduced without the written permission of Federal Heath Sign Company, LLC or its authorized agent. © 2008



FRONT ELEVATION

SCALE: 3/32" = 1'-0"



RIGHT ELEVATION

SCALE: 3/32" = 1'-0"



SIGN COMPANY
www.FederalHeath.com

160 W. Carmel Drive, Suite 236 Carmel, IN 46032
(317) 581-7790 Fax (317) 581-7783

Manufacturing Facilities:
Oceanside - Euless - Jacksonville - Columbus
Office Locations:
Oceanside - Las Vegas - Laughlin - Idaho Falls
Euless - Jacksonville - Houston - San Antonio
Corpus Christi - Grafton - Milwaukee
Willowbrook - Louisville - Indianapolis - Columbus
Cincinnati - Westerville - Knoxville - Tunica
Atlanta - Tampa - Daytona Beach - Winter Park

Building Quality Signage Since 1901

Revisions:

R1: 7/7/24 KS-Updated elevations

Client Approval/Date:

Landlord Approval/Date:

Colors Depicted in This Rendering May Not Match Actual Finished Materials. Refer To Product Samples For Exact Color Match

Account Rep: **Steve Maeser**

Project Manager: **K. Singleton**

Drawn By: **K. Singleton**

UL Underwriters Laboratories Inc. ELECTRICAL TO USE U.L.-48 LISTED COMPONENTS AND SHALL MEET ALL N.E.C. STANDARDS

Project / Location:



SEQ COORS BYPASS NW
AND 7 BAR LOOP RD NW
ALBUQUERQUE-W, NEW MEXICO

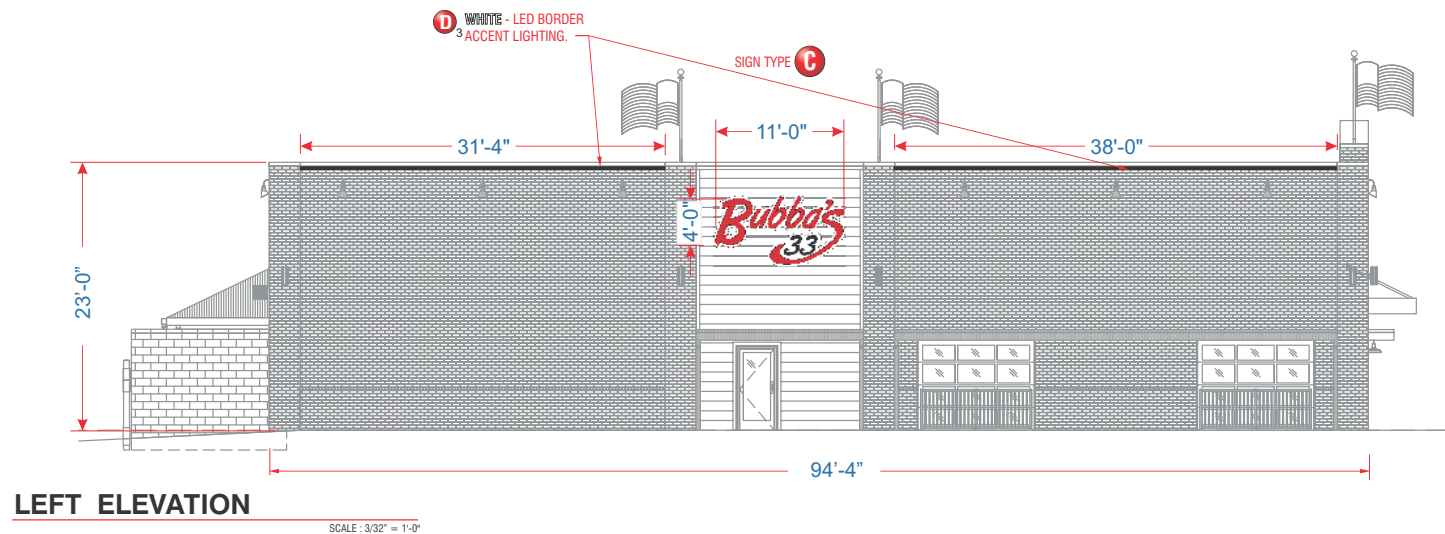
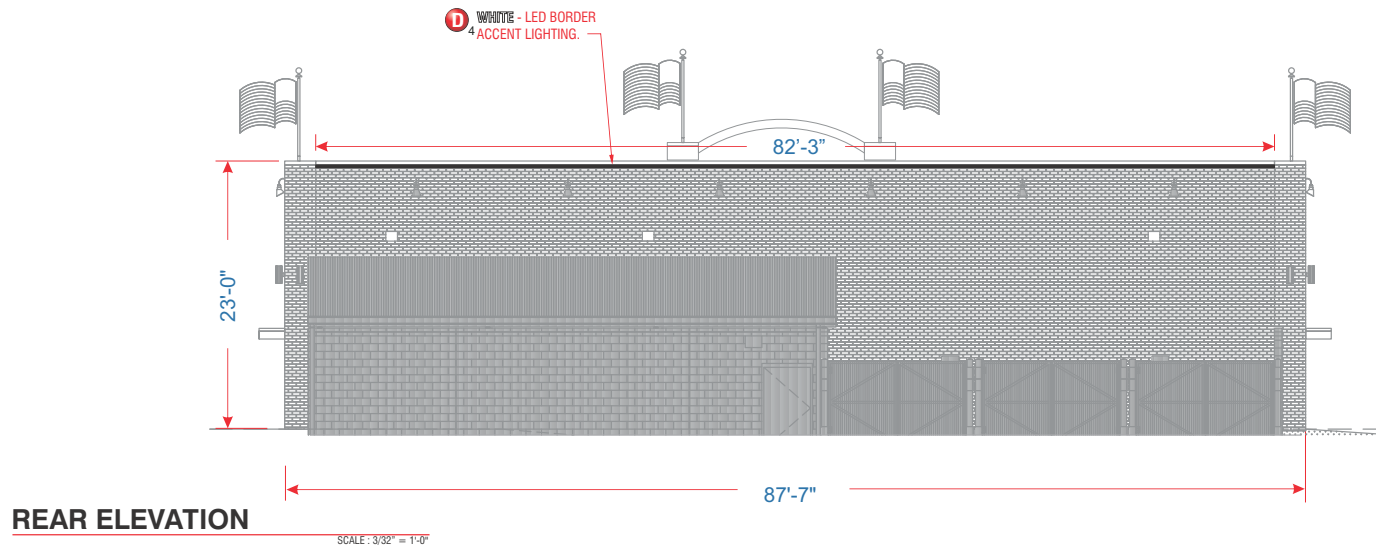
Job Number: **23-64977-10**

Date: **FEBRUARY 15, 2021**

Sheet Number: **2** Of **6**

Design Number: **23-64977-10R1**

This original drawing is provided as part of a planned project and is not to be exhibited, copied or reproduced without the written permission of Federal Heath Sign Company, LLC or its authorized agent. © 2008



SIGN COMPANY
www.FederalHeath.com
160 W. Carmel Drive, Suite 236 Carmel, IN 46032
(317) 581-7790 Fax (317) 581-7783

Manufacturing Facilities:
Oceanside - Euless - Jacksonville - Columbus
Office Locations:
Oceanside - Las Vegas - Laughlin - Idaho Falls
Euless - Jacksonville - Houston - San Antonio
Corpus Christi - Grafton - Milwaukee
Willowbrook - Louisville - Indianapolis - Columbus
Cincinnati - Westerville - Knoxville - Tunica
Atlanta - Tampa - Daytona Beach - Winter Park
Building Quality Signage Since 1901

Revisions:
R1: 7/7/24 KS-Updated elevations

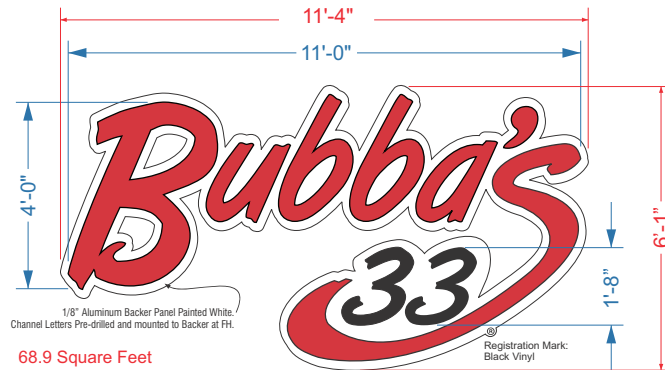
Colors Depicted In This Rendering May Not Match Actual Finished Materials. Refer To Product Samples For Exact Color Match.
Client Approval/Date: _____
Landlord Approval/Date: _____

Account Rep: **Steve Maeser**
Project Manager: **K. Singleton**
Drawn By: **K. Singleton**
 Underwriters Laboratories Inc. ELECTRICAL TO USE U.L.-48 LISTED COMPONENTS AND SHALL MEET ALL N.E.C. STANDARDS

Project / Location:
Bubba's
SEQ COORS BYPASS NW
AND 7 BAR LOOP RD NW
ALBUQUERQUE-W, NEW MEXICO

Job Number: **23-64977-10**
Date: **FEBRUARY 15, 2021**
Sheet Number: **3** Of **6**
Design Number: **23-64977-10R1**

This original drawing is provided as part of a planned project and is not to be exhibited, copied or reproduced without the written permission of Federal Heath Sign Company, LLC or its authorized agent. © 2008



SIGN TYPES **A B C** LED Illuminated Channel Letters- Three Sets (3) Req'd.

SCOPE OF WORK:

Manufacture and install S/F LED Channel Letterset.

SCALE : 3/8" = 1'-0"

Notes: ⚠ Certain electrical components of signs will fail prematurely if signs are not shut-off for a period of time, once, each day. For best performance, we recommend signs to be connected to an automatic controlling device such as an Energy Management System, Time Clock or Photo Cell that will automatically shut-off the sign for a period of time, each day. Failure to do so will cause damage to the electrical components of the sign and will void the warranty.
⚠ Some dimming devices will also adversely affect sign electrical components, causing failure. Any dimming of the sign without consultation with Federal Heath Sign Co. will void the warranty.





CUSTOMER TO PROVIDE:

ALL BRANCH (PRIMARY ELECTRICAL SERVICE) CIRCUITS & FINAL CONNECTION TO EACH SIGN (WITHIN 5 FT) TO BE BY CERTIFIED ELECTRICIAN:
A. All branch circuits for signs must be totally dedicated to signs (including dedicated ground and dedicated neutral per circuit).
B. Sign circuits must not be shared with other loads such as lighting, air conditioning, and other equipment.
C. Properly sized ground wire that can be traced back to the breaker panel must be provided.
D. Number and size of circuits for each sign to meet Federal Heath Signs requirement.

Any deviation from the above recommendations may result in:

1. Damage to or improper operation of the sign(s).
2. Delays and additional costs.

MATERIAL FINISH COLORS

			
BUBBA'S FACES #2283 RED Acrylic	BUBBA'S & "33" NUMBERS: Returns Painted Black, Trim Cap	"33" NUMBERS: #7328 White Acrylic Faces	"33" NUMBERS 3M Dual-Color Film 3635-222 Black Perforated Film, First Surface.

120V - 20 AMP CIRCUIT ELECTRICAL PRIMARY TO SIGN LOCATION AND THE FINAL HOOK-UP TO BE BY CUSTOMERS G.C. ELECTRICIAN. NUMBER OF CIRCUITS PER SIGN TO BE PER FH REQUIREMENTS.
ALL BRANCH CIRCUITS, INCLUDING GROUND AND NEUTRAL, TO BE DEDICATED TO SIGNS ONLY AND NOT SHARED WITH OTHER LOADS.

GENERAL NOTE

• INSTALLER SHALL VERIFY WALL CONDITION IN THE FIELD
• TYPE, SIZE AND NUMBER OF FASTENERS TO BE DETERMINED BY THE INSTALLATION CONTRACTOR
• ALL HOOT HOLES TO BE DRILLED OR PUNCHED
• ISOLATE ALL ALUMINUM FROM STEEL

INSTALLER REQUIREMENTS

ALL MOUNTING, WIRING, SECONDARY WIRING AND CONDUITS ARE TO BE PROVIDED BY THE INSTALLATION CONTRACTOR
ALL PENETRATIONS IN THE WALL ARE TO BE GROUTED WITH GROUT AND FILL MATERIAL

S/F CHANNEL LETTERS

CROSS SECTION-MOUNTING DETAIL (TYP.)

Scale: NTS

ELECTRICAL REQUIREMENTS

Total: <u>3.0</u> Amps Per Sign	ALL BRANCH CIRCUITS SHALL BE DEDICATED TO SIGNS (INCLUDING
(1) 120V 20A Circuit Required Per Sign.	

- 1/8" Aluminum Backer Panel Painted White. Pre-drilled mounting and secondary holes.
- .063 Aluminum Letters and Backs.
- Channel Red LED Lighting in letters.
- 'BUBBA'S': Channel Letters Returns Painted Black. #2283 Red Acrylic 3/16" Thick w/ 1" Black Trim Cap.
- "33" Channel Number Returns Painted Black. .187 White 7328 White Acrylic Faces, First Surface 3M Dual-Color Film 3635-222 (Black at Day/White at Night) and 1" Black Trim Cap. White LED Illumination.
- Rust Resistant #10 Self Tapping Screws. If wall conditions are not conducive to Self Tapping Screws mounting, ALTERNATE MOUNTING METHODS will be needed.
- 1/4" Drain Holes In Letter and Number Bottom (2 Minimum)
- Ⓡ: Black Vinyl Applied to Backer Panel.
- Backer Panel
- Metallic Seal-Tite In Wall For Supply and Primary Leads
- Transformer Box Mounted with Lid on Top
- 120 VAC/12VDC Power Supply (Mount In Transformer Box)
- Transformer Box Mounting Brackets by Installer
- J-Box (By Others)
- 14 AWL Wire From Power Supply To LED Connector Inside Each Letter.

LED LOW VOLTAGE LIGHTING SYSTEM
U.L. RECOGNIZED - CLASS 2 - CONFORMS TO U.L. 48
Scale: NTS



SIGN COMPANY
www.FederalHeath.com

160 W. Carmel Drive, Suite 236 Carmel, IN 46032
(317) 581-7790 Fax (317) 581-7783

Manufacturing Facilities:
Oceanside - Eules - Jacksonville - Columbus
Office Locations:
Oceanside - Las Vegas - Laughlin - Idaho Falls
Eules - Jacksonville - Houston - San Antonio
Corpus Christi - Grafton - Milwaukee
Willowbrook - Louisville - Indianapolis - Columbus
Cincinnati - Westerville - Knoxville - Tunica
Atlanta - Tampa - Daytona Beach - Winter Park

Building Quality Signage Since 1901

Revisions:

R1: 7/17/24 KS-Updated elevations

Colors Depicted In This Rendering May Not Match Actual Finished Materials. Refer To Product Samples For Exact Color Match

Client Approval/Date:

Landlord Approval/Date:

Account Rep: **Steve Maeser**

Project Manager: **K. Singleton**

Drawn By: **K. Singleton**

 Underwriters Laboratories Inc.  ELECTRICAL TO USE U.L.-48 LISTED COMPONENTS AND SHALL MEET ALL N.E.C. STANDARDS

Project / Location:



SEQ COORS BYPASS NW
AND 7 BAR LOOP RD NW
ALBUQUERQUE-W, NEW MEXICO

Job Number: **23-64977-10**

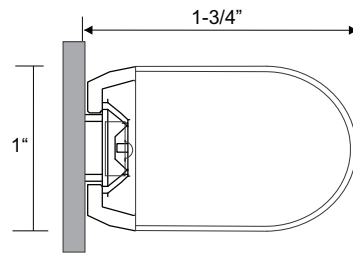
Date: **FEBRUARY 15, 2021**

Sheet Number: **4** Of **6**

Design Number: **23-64977-10R1**

This original drawing is provided as part of a planned project and is not to be exhibited, copied or reproduced without the written permission of Federal Heath Sign Company, LLC or its authorized agent. © 2008

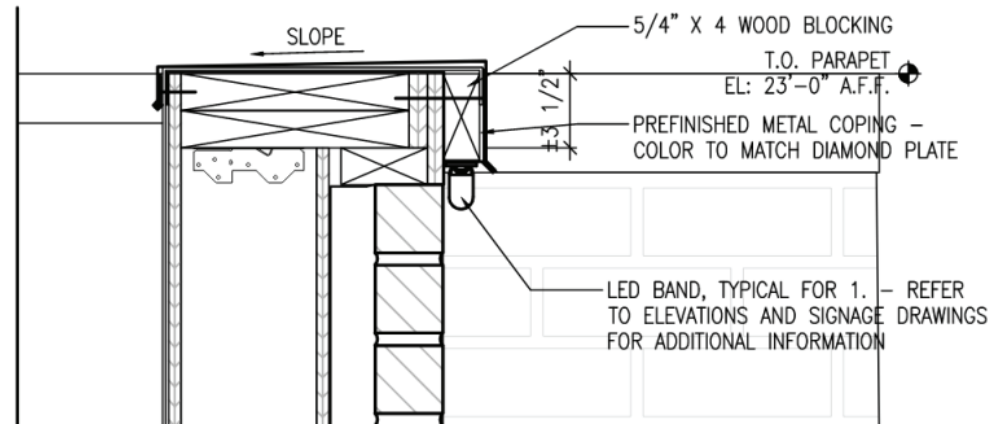
LEDStripe - 288 Total Lineal Feet.



CROSS SECTION (TYP.)

ELECTRICAL REQUIREMENTS

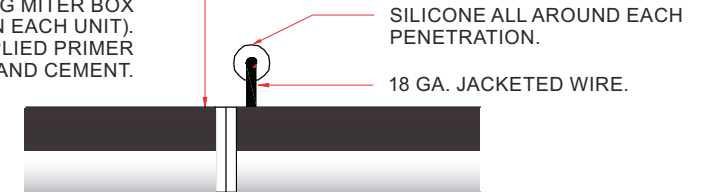
Total: 10 Amps.	ALL BRANCH CIRCUITS SHALL BE DEDICATED TO SIGNS (INCLUDING
(2) 120V 20A Circuit Required.	



MOUNTING DETAIL

ENDS CUT TO LENGTH IN THE FIELD
(AS REQUIRED)

1. CUT LED STRIPE BY USING MITER BOX
(MAKE CUT ON END AS INDICATED ON EACH UNIT).
2. APPLY SILICONE END CAP USING SUPPLIED PRIMER
AND CEMENT.



LED STRIPE (TYP.)
COVER PIECE REQUIRED
AT JOINTS

CUTTING DETAIL

LED TYPE **D** LEDSTRIPE DETAIL

1-4

SCOPE OF WORK:

Manufacture and install LED accent lighting on all elevations having remote transformers located in accessible area.

SCALE : NTS



SIGN COMPANY
www.FederalHeath.com

160 W. Carmel Drive, Suite 236 Carmel, IN 46032
(317) 581-7790 Fax (317) 581-7783

Manufacturing Facilities:
Oceanside - Euless - Jacksonville - Columbus
Office Locations:
Oceanside - Las Vegas - Laughlin - Idaho Falls
Euless - Jacksonville - Houston - San Antonio
Corpus Christi - Grafton - Milwaukee
Willowbrook - Louisville - Indianapolis - Columbus
Cincinnati - Westerville - Knoxville - Tunica
Atlanta - Tampa - Daytona Beach - Winter Park

Building Quality Signage Since 1901

Revisions:

R1: 7/7/24 KS-Updated elevations

Colors Depicted In This Rendering May Not Match Actual Finished Materials. Refer To Product Samples For Exact Color Match

Client Approval/Date:

Landlord Approval/Date:

Account Rep: Steve Maeser

Project Manager: K. Singleton

Drawn By: K. Singleton

Underwriters Laboratories Inc. ELECTRICAL TO USE U.L.-48 LISTED COMPONENTS AND SHALL MEET ALL N.E.C. STANDARDS

Project / Location:



SEQ COORS BYPASS NW
AND 7 BAR LOOP RD NW
ALBUQUERQUE-W, NEW MEXICO

Job Number: 23-64977-10

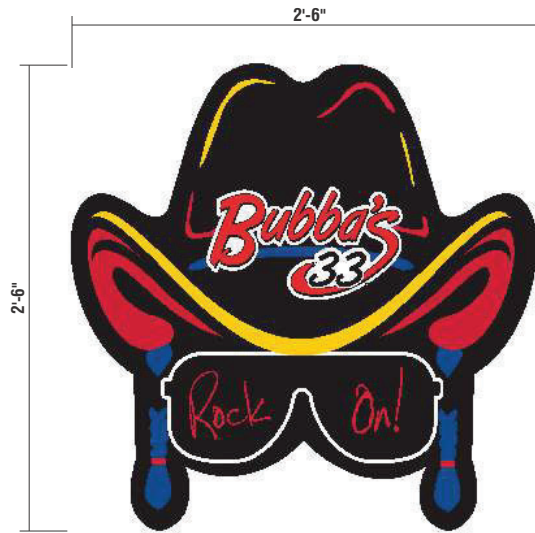
Date: FEBRUARY 15, 2021

Sheet Number: 5 Of 6

Design Number: 23-64977-10R1

This original drawing is provided as part of a planned project and is not to be exhibited, copied or reproduced without the written permission of Federal Heath Sign Company, LLC or its authorized agent. © 2008

INTERIOR SIGN



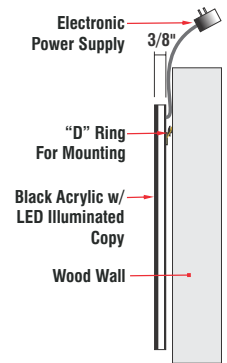
E 30" Bubba's Rock On Display **PART #B3030ROL**



F 24" Bubba's Display **PART #B2448L**



G 24" Bubba's Display **PART #TR736RRL**



Typical Section
Not to Scale

INSTALLATION OF THIS SIGN SHALL CONFORM TO ARTICLE 600 OF THE NEC, UL48, AND OR OTHER APPLICABLE LOCAL CODES, INCLUDING PROPER GROUNDING AND BONDING OF SIGN.
LOCATION OF DISCONNECT SWITCH AFTER INSTALLATION SHALL COMPLY WITH ARTICLE 600.8(A) OF THE NEC.



160 W. Carmel Drive, Suite 236 Carmel, IN 46032
(317) 581-7790 Fax (317) 581-7783

Manufacturing Facilities:
Oceanside - Euless - Jacksonville - Columbus
Office Locations:
Oceanside - Las Vegas - Laughlin - Idaho Falls
Euless - Jacksonville - Houston - San Antonio
Corpus Christi - Grafton - Milwaukee
Willowbrook - Louisville - Indianapolis - Columbus
Cincinnati - Westerville - Knoxville - Tunica
Atlanta - Tampa - Daytona Beach - Winter Park

Building Quality Signage Since 1901

Revisions:

R1: 7/7/24 KS-Updated elevations

Client Approval/Date:

Landlord Approval/Date:

Colors Depicted In This Rendering May Not Match Actual Finished Materials. Refer To Product Samples For Exact Color Match

Account Rep: Steve Maeser

Project Manager: K. Singleton

Drawn By: K. Singleton

Underwriters Laboratories Inc. ELECTRICAL TO USE U.L.-48 LISTED COMPONENTS AND SHALL MEET ALL N.E.C. STANDARDS

Project / Location:



SEQ COORS BYPASS NW
AND 7 BAR LOOP RD NW
ALBUQUERQUE-W, NEW MEXICO

Job Number: 23-64977-10

Date: FEBRUARY 15, 2021

Sheet Number: 6 Of 6

Design Number: 23-64977-10R1

This original drawing is provided as part of a planned project and is not to be exhibited, copied or reproduced without the written permission of Federal Heath Sign Company, LLC or its authorized agent. © 2008