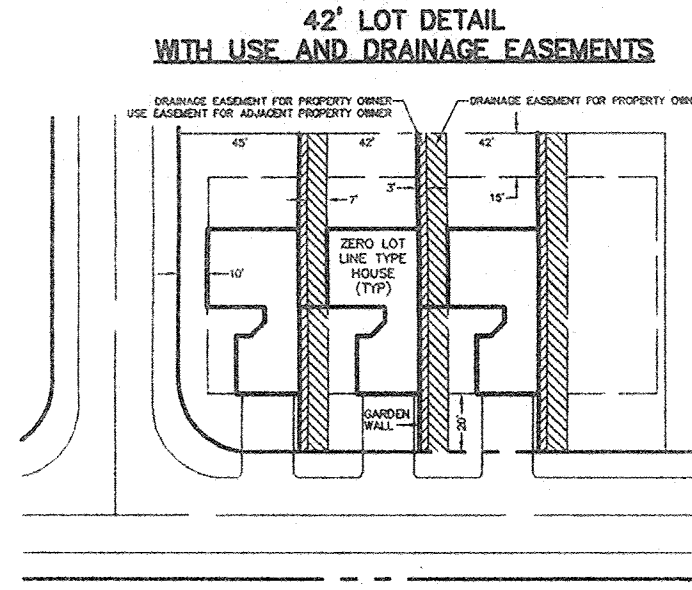


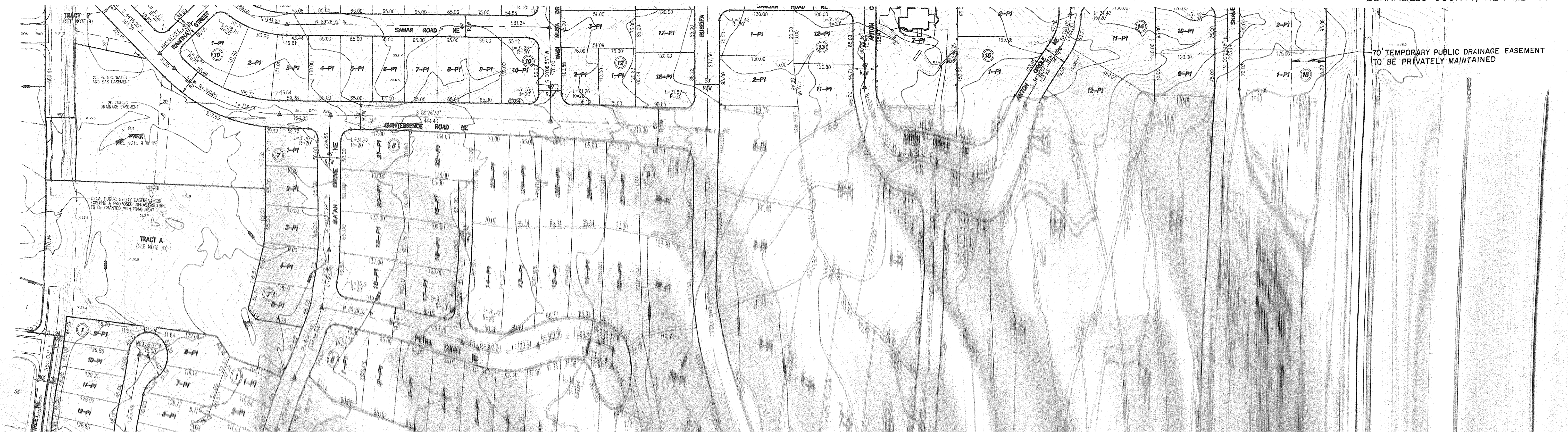
ION - CORRALES, NEW MEXICO - (505) 897-0000



**PRELIMINARY PLAT
FOR
QUINTESSENCE SUBDIVISION**

UNITS 1 THRU 6
 COMPRISED OF
 LOTS 1-11, 17-19, AND 22-32 BLOCK 14,
 LOTS 1-26 AND 28-32 BLOCK 16
 LOTS 1-32 BLOCK 18, LOTS 3-29 BLOCK 20
 NORTH ALBUQUERQUE ACRES UNIT 2, TRACT 3
 SITUATE WITHIN
 CITY OF ALBUQUERQUE
 BERNALILLO COUNTY, NEW MEXICO

SEE SHEET 2 OF 4



NORTH ALBUQUERQUE ACRES



SELIGMAN AVE. NE

FUTURE SAN FRANCISCO

FUTURE POSSIBLE CONNECTION

CORONADO AVENUE NE

FUTURE POSSIBLE TERMINUS

SAN FRANCISCO ROAD NE

PARTIAL NORMAL STREET

PERALTA ROAD NE

SAN RAPHAEL AVE. NE

HERITAGE HILLS EAST

DON DIEGO STREET NE

FREEDOM WAY NE

BOLAK DRIVE

NORTH PINO ARROYO

BENT ROAD NE

HOLBROOK STREET NE

DE VARGAS LOOP NE

VENTURA

ESTATES

PARK AND DRAINAGE CONTROL

LOCAL STREET

LOCAL STREET

MAJOR LOCAL STREET

LOCAL STREET

DRAINAGE CHANNEL AND TRAIL

LOCAL STREET

LOCAL STREET

NORMAL STREET

LOCAL STREET

LOCAL STREET

LOCAL STREET

NORMAL STREET

LOCAL STREET

NORMAL STREET

EUBANK BOULEVARD NE

SAN RAPHAEL NE

DEL REY NE

SANTA MONICA NE

75' 24" RCP

75' 30" RCP

75' 30" RCP

75' 48" RCP

12'

12'

16'

16'

16'

16'

16'

16'

16'

12'

16' 6"

16'

16'

16'

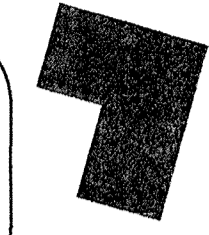
16'

16'

16'

16'

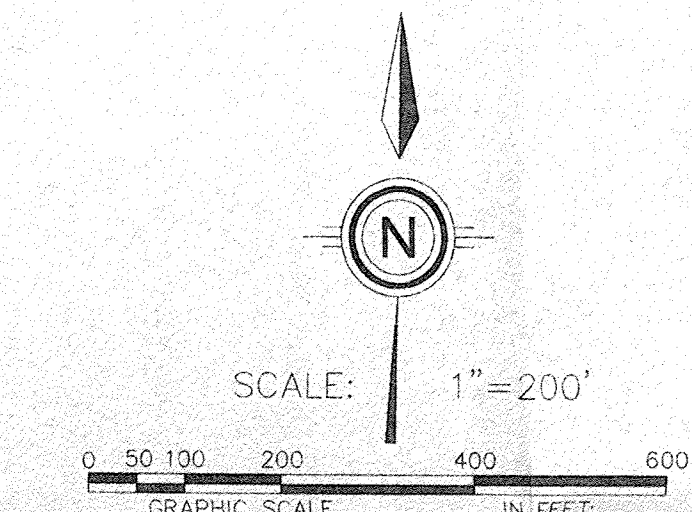
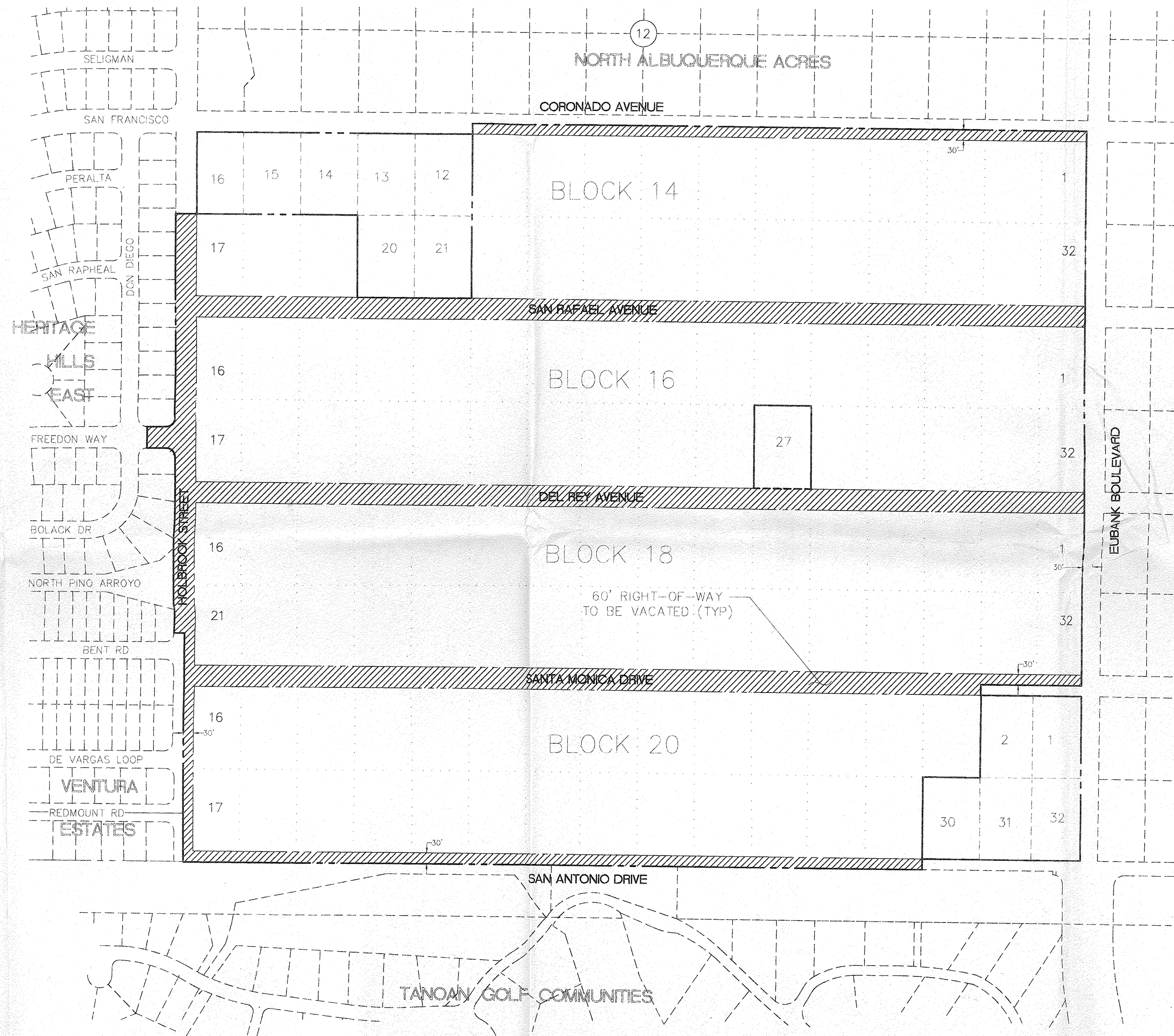
16'



COMMUNITY SCIENCES CORPORATION - CORRALES, NEW MEXICO - (505) 897-0000

**EXISTING PLATTING
AND
VACATION REQUEST EXHIBIT
FOR
QUINTESSENCE SUBDIVISION
UNITS 1 THRU 6**

COMPRISED OF
LOTS 1-11, 17-19 AND 22-32 BLOCK 14,
LOTS 1-26 AND 28-32 BLOCK 16,
LOTS 1-32 BLOCK 18, LOTS 3-29 BLOCK 20
NORTH ALBUQUERQUE ACRES, UNIT 2, TRACT 3
CITY OF ALBUQUERQUE
BERNALILLO COUNTY, NEW MEXICO
(FILED: JUNE 8, 1931, BOOK D, PAGE 133)



INDICATES RIGHT-OF-WAYS TO BE VACATED

NOTE: ACCESS TO LOTS 20 & 21, BLOCK 14 AND LOT 27, BLOCK 16 TO BE PROVIDED WITH FINAL PLATTING.

SHEET 4 OF 4

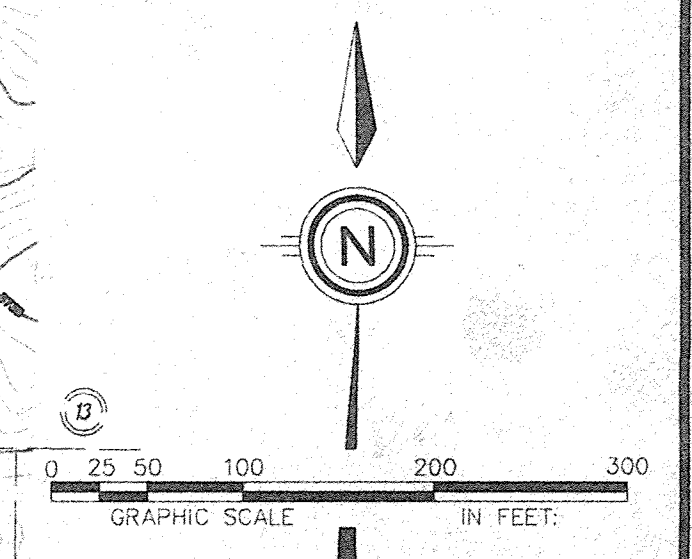
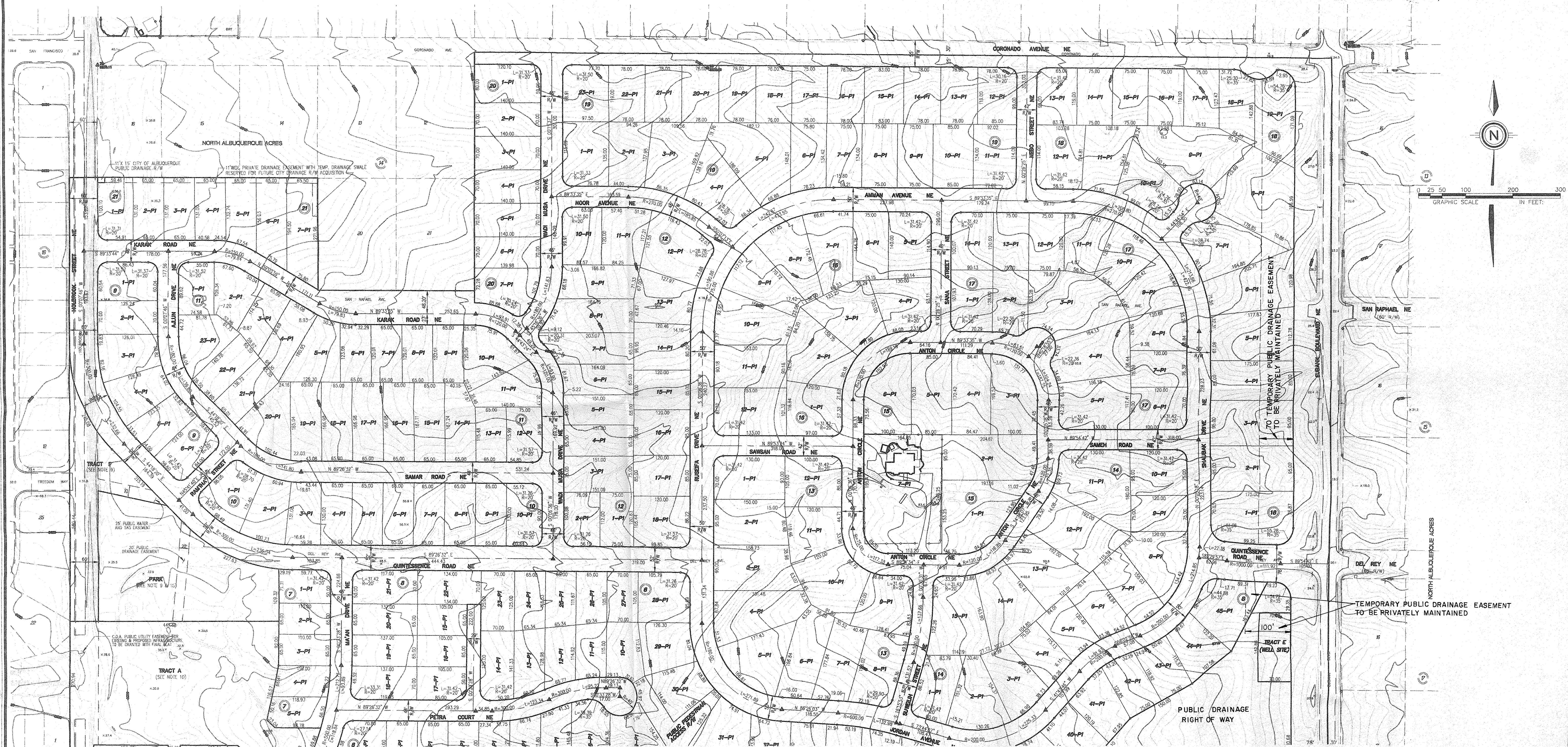
DATE: 11-18-94	community sciences corporation <small>LAND PLANNING P.O. Box 1328 ENGINEERING SURVEYING Corrales, N.M. 87048</small>
SCALE: 1"=200'	
DESIGNED: E.G.L./C.A.S.	
DRAWN: G.R.R.	
JOB NO: 323-04-022	

REVISED AUGUST, 1995

PRELIMINARY PLAT
FOR
QUINTESSENCE SUBDIVISION

UNITS 1 THRU 6
COMPRISED OF
LOTS 1-11, 17-19, AND 22-32 BLOCK 14,
LOTS 1-26 AND 28-32 BLOCK 16,
LOTS 1-32 BLOCK 18, LOTS 3-29 BLOCK 20
SITUATE WITHIN
CITY OF ALBUQUERQUE
BERNALILLO COUNTY, NEW MEXICO

COMMUNITY SCIENCES CORPORATION - CORRALES, NEW MEXICO - (505) 897-0000



SEE SHEET 3 OF 4

SHEET 2 OF 4

DATE:	MARCH 1995	community sciences corporation <small>LAND PLANNING ENGINEERING SURVEYING</small> <small>220-54-0223 Box 1238 Santa Fe, NM 87505</small>
SCALE:	1"=100'	
DESIGNED:	EGL/CAS	
DRAWN:	DER	
DATE:	MARCH 1995	

REV: MARCH, 1995
REVISED AUGUST, 1995

2320APPE.DWG
XREF: 25
TOP002.DWG
TOP004.DWG
TOP005.DWG
2320APPL.DWG