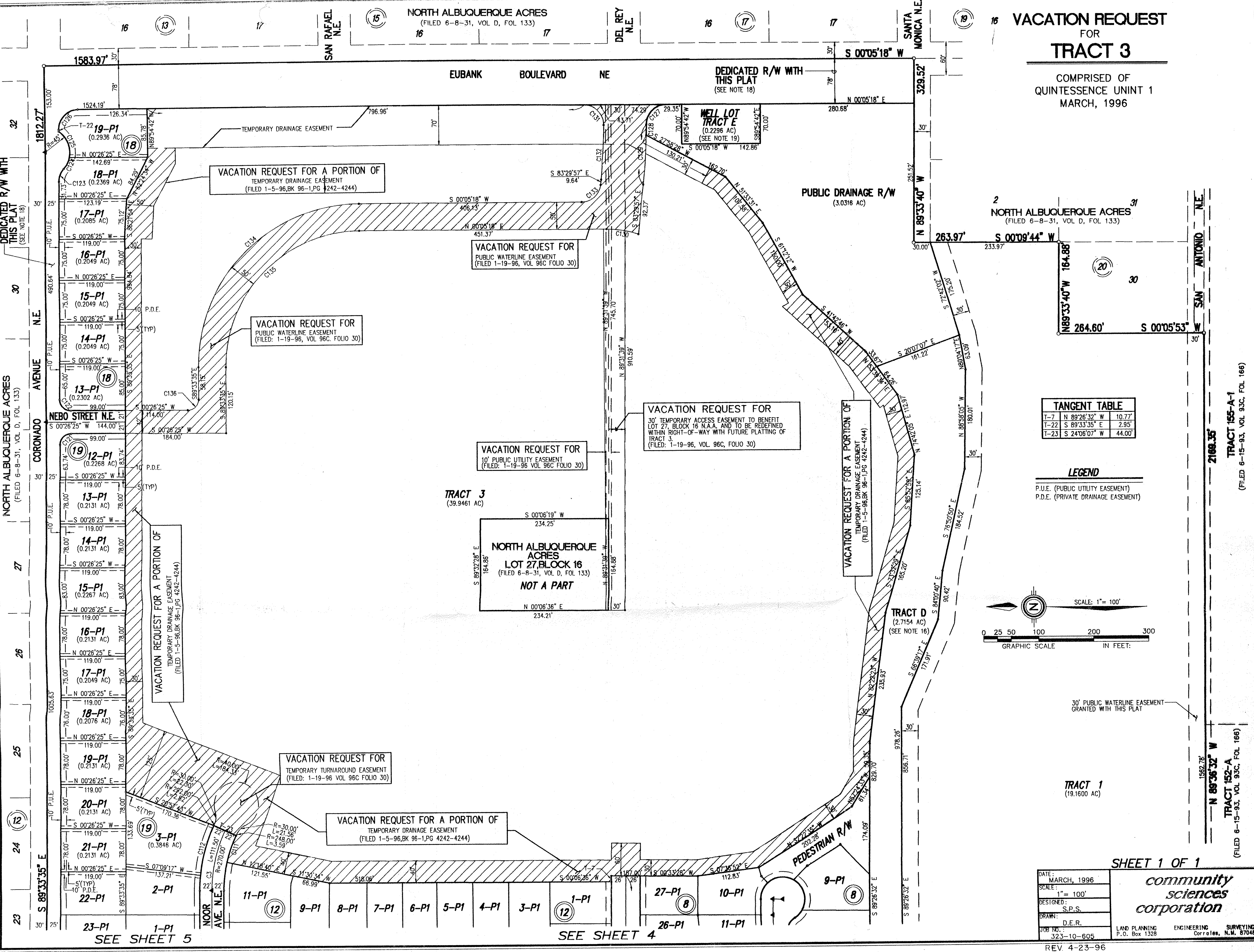


COMMUNITY SCIENCES CORPORATION - CORRALES, NEW MEXICO - (505) 897-0000

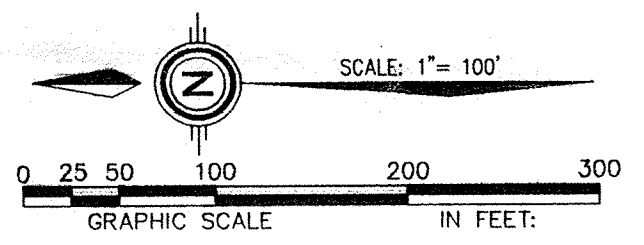


# VACATION REQUEST FOR TRACT 3

COMPRISED OF QUINTESSENCE UNIT 1 MARCH, 1996

T	N	E	W	W
T-7	N 89°26'32"	W	10.77'	
T-22	S 89°33'35"	E	2.95'	
T-23	S 24°06'07"	W	44.00'	

**LEGEND**  
P.U.E. (PUBLIC UTILITY EASEMENT)  
P.D.E. (PRIVATE DRAINAGE EASEMENT)



30' PUBLIC WATERLINE EASEMENT GRANTED WITH THIS PLAT

**TRACT 1**  
(19,1600 AC)

**SHEET 1 OF 1**

*community sciences corporation*

DATE:	MARCH, 1996
SCALE:	1" = 100'
DESIGNED:	S.P.S.
DRAWN:	D.E.R.
JOB NO.:	323-10-605

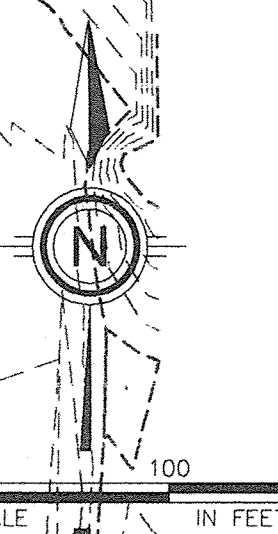
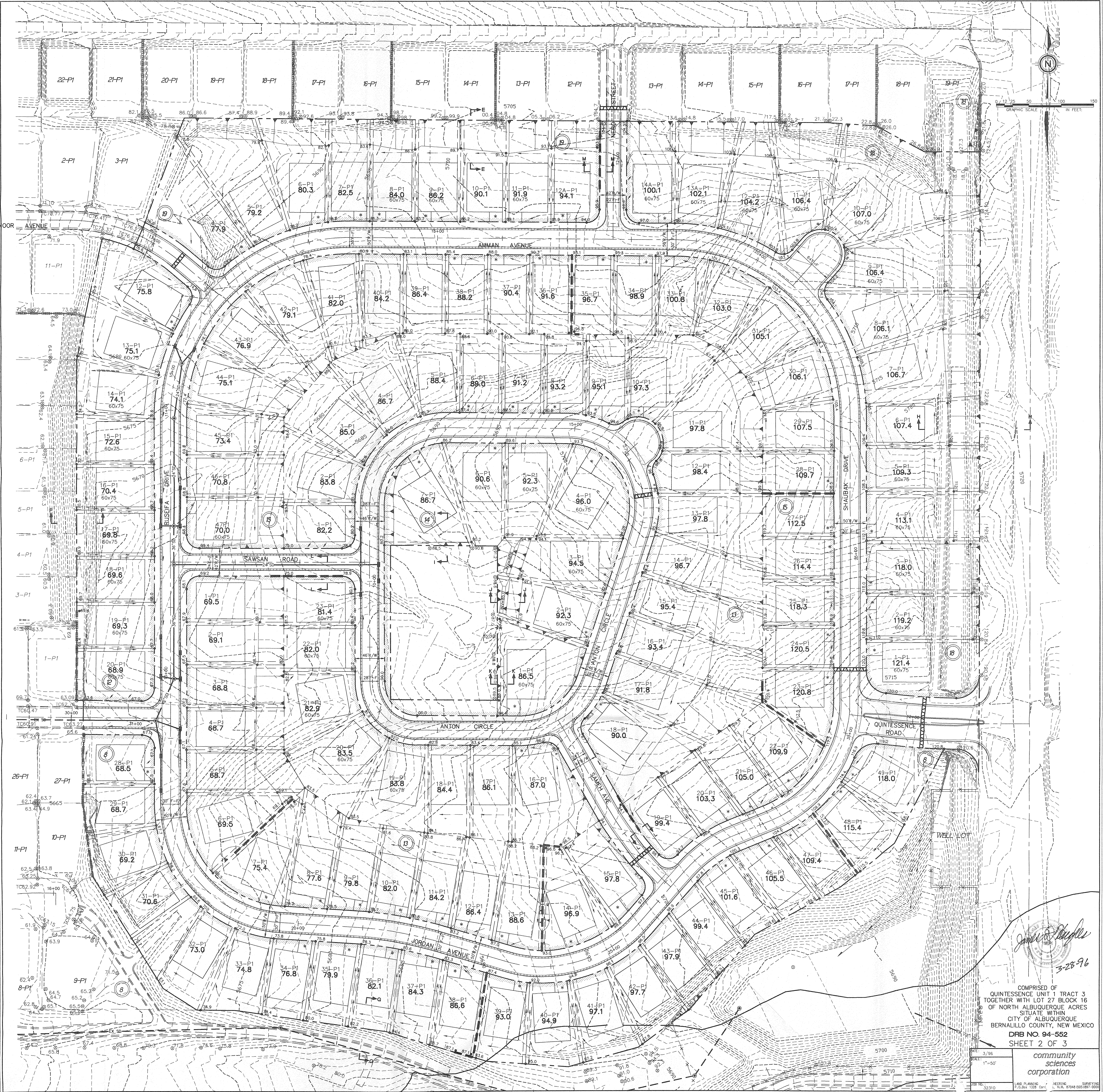
LAND PLANNING P.O. Box 1328  
ENGINEERING Corrales, N.M. 87048  
SURVEYING

**TRACT 155-A-1**  
(FILED 6-15-93, VOL. 93C, FOL. 166)

**TRACT 152-A**  
(FILED 6-15-93, VOL. 93C, FOL. 166)

**TRACT 156-A-1**  
(FILED 6-15-93, VOL. 93C, FOL. 166)

32310P.DWG



COMPRISED OF  
 QUINTESSENCE UNIT 1 TRACT 3  
 TOGETHER WITH LOT 27 BLOCK 16  
 OF NORTH ALBUQUERQUE ACRES  
 SITUATE WITHIN  
 CITY OF ALBUQUERQUE  
 BERNALILLO COUNTY, NEW MEXICO  
 DRB NO. 94-552  
 SHEET 2 OF 3

*James H. Hughes*  
 3-28-96

community sciences corporation