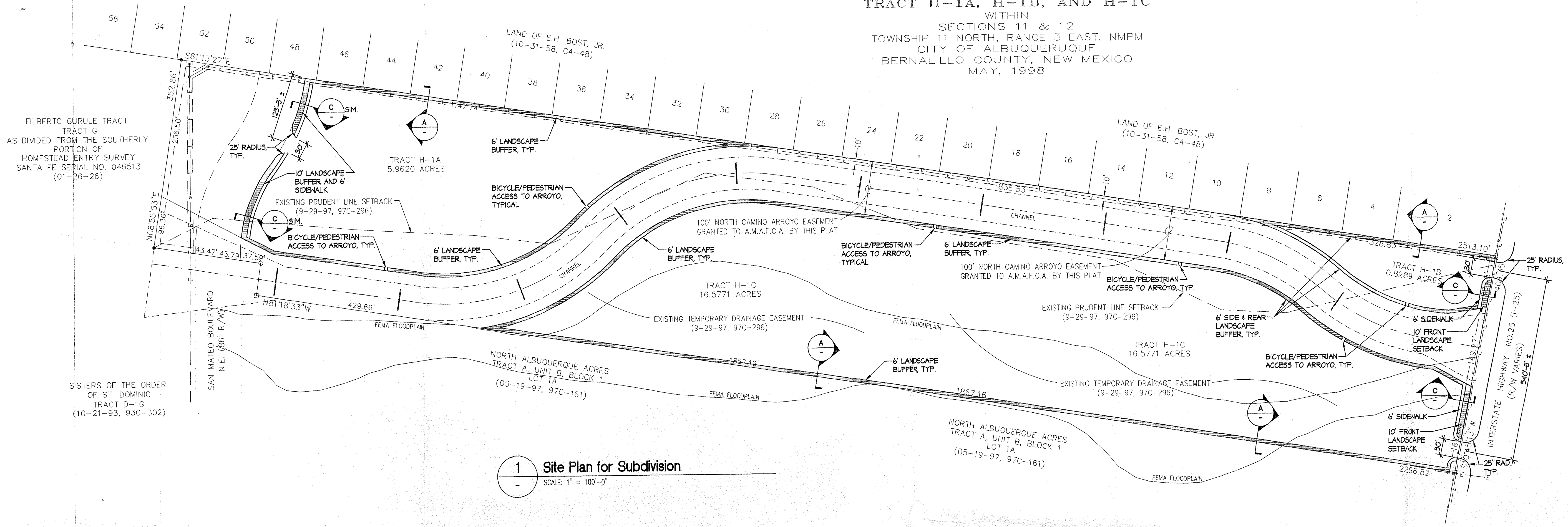


PLAT OF  
**LAND OF FILBERTO GURULE**  
 TRACT H-1A, H-1B, AND H-1C  
 WITHIN  
 SECTIONS 11 & 12  
 TOWNSHIP 11 NORTH, RANGE 3 EAST, NMPM  
 CITY OF ALBUQUERQUE  
 BERNALILLO COUNTY, NEW MEXICO  
 MAY, 1998



**1 Site Plan for Subdivision**  
 SCALE: 1" = 100'-0"

**LANDSCAPE NOTES**

- ALL LANDSCAPING SHALL BE WATERED BY A COMPLETE UNDERGROUND IRRIGATION SYSTEM OPERATED BY AUTOMATIC TIMER, POP-UP SPRAY HEADS TO SOD AREAS, BUBBLERS TO TREES AND DRIP IRRIGATION TO SHRUBS.
- IRRIGATION SYSTEM MAINTENANCE & LANDSCAPE MAINTENANCE SHALL BE THE RESPONSIBILITY OF THE PROPERTY OWNER.
- IT IS THE INTENT OF THIS PLAN TO COMPLY WITH THE CITY OF ALBUQUERQUE WATER OF CONSERVATION LANDSCAPE ORDINANCE.
- APPROVAL OF THIS PLAN DOES NOT CONSTITUTE OR IMPLY EXEMPTION FROM WATER WASTE PROVISIONS OF THE WATER CONSERVATION LANDSCAPING AND WATER WASTE ORDINANCE. WATER MANAGEMENT IS THE SOLE RESPONSIBILITY OF THE PROPERTY OWNER.

**GENERAL NOTES**

- MINIMUM BUILDING SETBACK AND HEIGHT SHALL BE CONSISTANT WITH THE SETBACKS REQUIRED IN APPROVED & CONDITIONAL USES OF THE SUBDIVISION.
- MAXIMUM FLOOR AREA RATIOS SHALL NOT EXCEED 40 **2-93.25**

**CASE NUMBER DRB-97-197**  
 APPLICATION SITE PLAN FOR SUBDIVISION, PRELIMINARY, AND FINAL PLAT.  
 I certify that this area is Zoned SP and that this plan is consistent with the specific site development plan approved by the Environmental Planning Commission (EPC) on 11/18/98 and that the findings in the Official Notice/Notification of Decision have been complied with.

**SITE DEVELOPMENT PLAN**

<i>Paula P. ...</i>	1-28-97
<i>Edward P. ...</i>	1-20-99
<i>Roger J. ...</i>	12-8-98
<i>Paul D. ...</i>	12-5-98
<i>Robert ...</i>	2-1-99

APPROVAL AND CONDITIONAL ACCEPTANCE: as specified by the Development Process Manual.

*Robert ...* 2-1-99

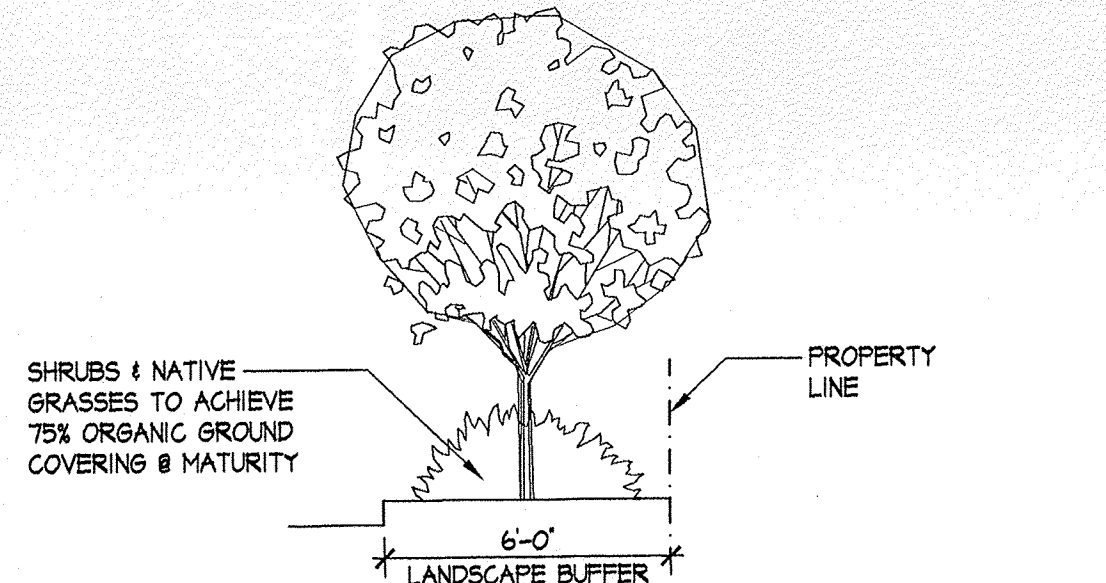
CITY ENGINEER, ALBUQUERQUE / BERNALILLO COUNTY PLANNING DIVISION

PLAZ (02708) 4196

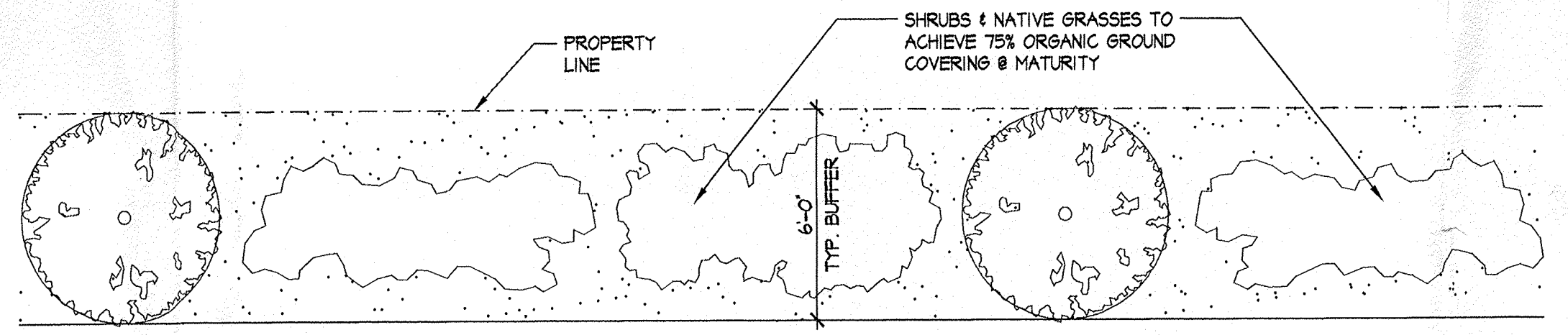
general notes  
 contractor to coordinate architectural plans with structural, plumbing, mechanical and electrical plans for routing, blockouts stubs, blocking for equipment, etc.  
 if any conflicts in the construction documents arise, the larger scale detail takes precedence, and the specifications govern over drawings  
 the contractor is to notify the architect immediately of any errors or omissions or conflicts in the construction documents  
 contractor to verify all dimensions prior to construction  
 contractor to verify all existing on site conditions prior to construct.

**LANDSCAPE LEGEND**

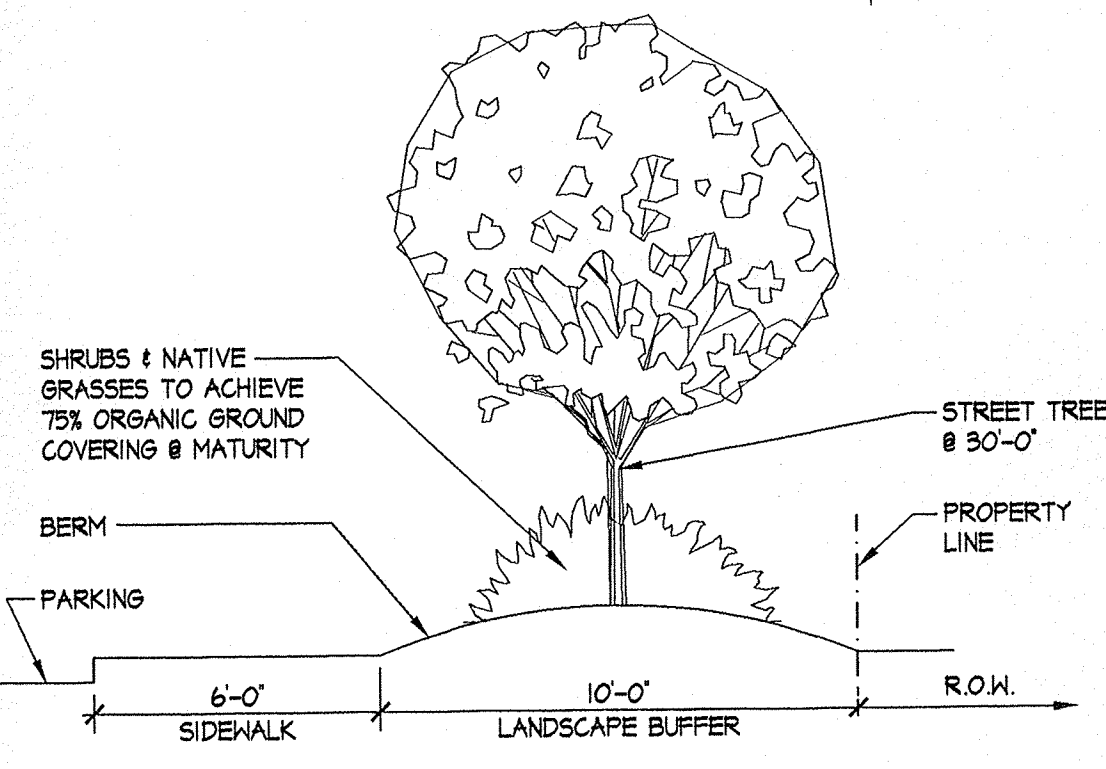
- 2-2 1/2 GALLON SHADE TREES: COTONWOOD, ASH, MAPLE, HONEY LOCUST, LONDON PLANE
- 15 GALLON FLOWERING ORNAMENTAL TREES: FLOWERING CRABAPPLE, BRADFORD PEAR
- MULTI-TRUNK ACCENT TREES: PINON, FORESTIERA, HAWTHORNE, ASPEN
- 15 GALLON LEYLANDII CYPRESS
- 15 GALLON DESERT WILLOW
- 5 GALLON SHRUB: CHAMISA, RUSSIAN SAGE, BLUEBIST SPIRAEA, APACHE PLUME, FOUR-WING SALTBUCH, POTENTILLA, AUTUMN SAGE, FRIOTINA, RAPHILOLEPIS, NANDINA, SILVERBERRY
- 5 GALLON GROUND COVERS: BUFFALO JUNIPER, HORIZONTAL COTONEASTER, HONEYSUCKLE
- SOD LAWN
- 3/4" CRUSHED GREY GRAVEL/FILTER FABRIC
- NATIVE SEED
- COMMERCIAL GRADE STEEL EDGING



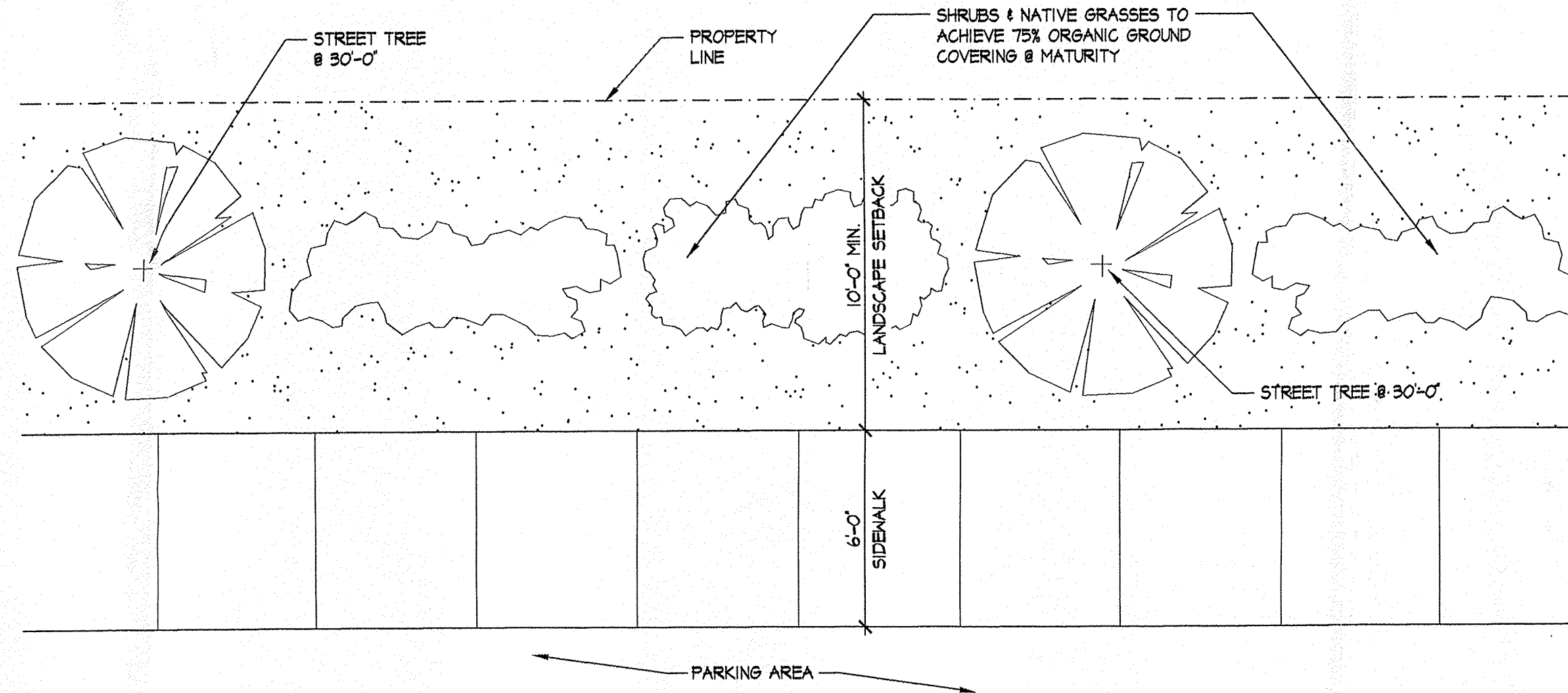
**A Typical Section • 6' Side and Rear Landscape Buffer**  
 SCALE: 1/4" = 1'-0"



**B Typical Plan View • 6' Side and Rear Landscape Buffer**  
 SCALE: 1/4" = 1'-0"



**C Typical Section • 10' Landscape Setback**  
 SCALE: 1/4" = 1'-0"



**D Typical Plan View • 10' Landscape Setback**  
 SCALE: 1/4" = 1'-0"

**MCT INDUSTRIES**  
**DCSW ARCHITECTS**

Sheet Title: Site Plan for Subdivision  
 Revisions:  
 Design  
 Architect  
 Collaborative  
 Southwest Inc.  
 Engineer **320 Central Ave SW**  
**Albuquerque, NM**  
 87102  
 Job No: **96121**  
 Date: **11/18/98** **505-843-9639**  
 Sheet **S1** **dcswdcswwarchitecta.com**

DRB 97-197