

GENERAL NOTES
 1. FIELD VERTICAL CURBS AND CURBS - ONE HOUR
 2. ALL VERTICAL CURBS AND CURBS SHALL BE
 3. ALL VERTICAL CURBS AND CURBS SHALL BE
 4. ALL VERTICAL CURBS AND CURBS SHALL BE
 5. ALL VERTICAL CURBS AND CURBS SHALL BE

KEYED NOTES
 1. LANDSCAPING AREA
 2. 6" TREE WELL WITH RAISED CONCRETE CURB SEE
 3. 6" TREE WELL WITH RAISED CONCRETE CURB SEE
 4. 6" TREE WELL WITH RAISED CONCRETE CURB SEE
 5. 6" TREE WELL WITH RAISED CONCRETE CURB SEE

Keynote No. 15 (Revised):
 15" WIDE ASPHALT RECREATION/PEDESTRIAN
 15" WIDE ASPHALT RECREATION/PEDESTRIAN
 15" WIDE ASPHALT RECREATION/PEDESTRIAN
 15" WIDE ASPHALT RECREATION/PEDESTRIAN

16. 15" WIDE ASPHALT RECREATION/PEDESTRIAN
 17. 15" WIDE ASPHALT RECREATION/PEDESTRIAN
 18. 15" WIDE ASPHALT RECREATION/PEDESTRIAN
 19. 15" WIDE ASPHALT RECREATION/PEDESTRIAN
 20. 15" WIDE ASPHALT RECREATION/PEDESTRIAN

21. 15" WIDE ASPHALT RECREATION/PEDESTRIAN
 22. 15" WIDE ASPHALT RECREATION/PEDESTRIAN
 23. 15" WIDE ASPHALT RECREATION/PEDESTRIAN
 24. 15" WIDE ASPHALT RECREATION/PEDESTRIAN
 25. 15" WIDE ASPHALT RECREATION/PEDESTRIAN

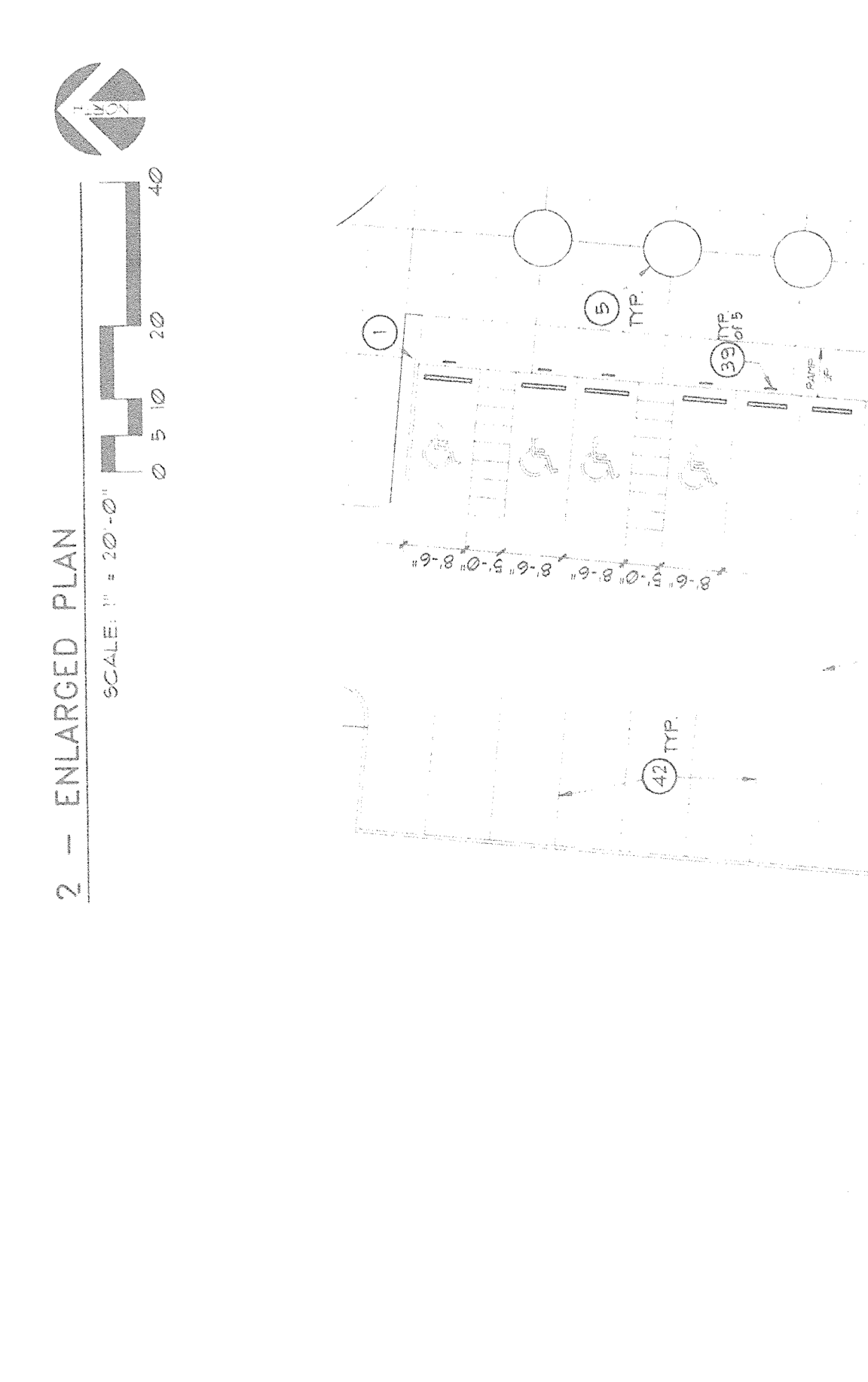
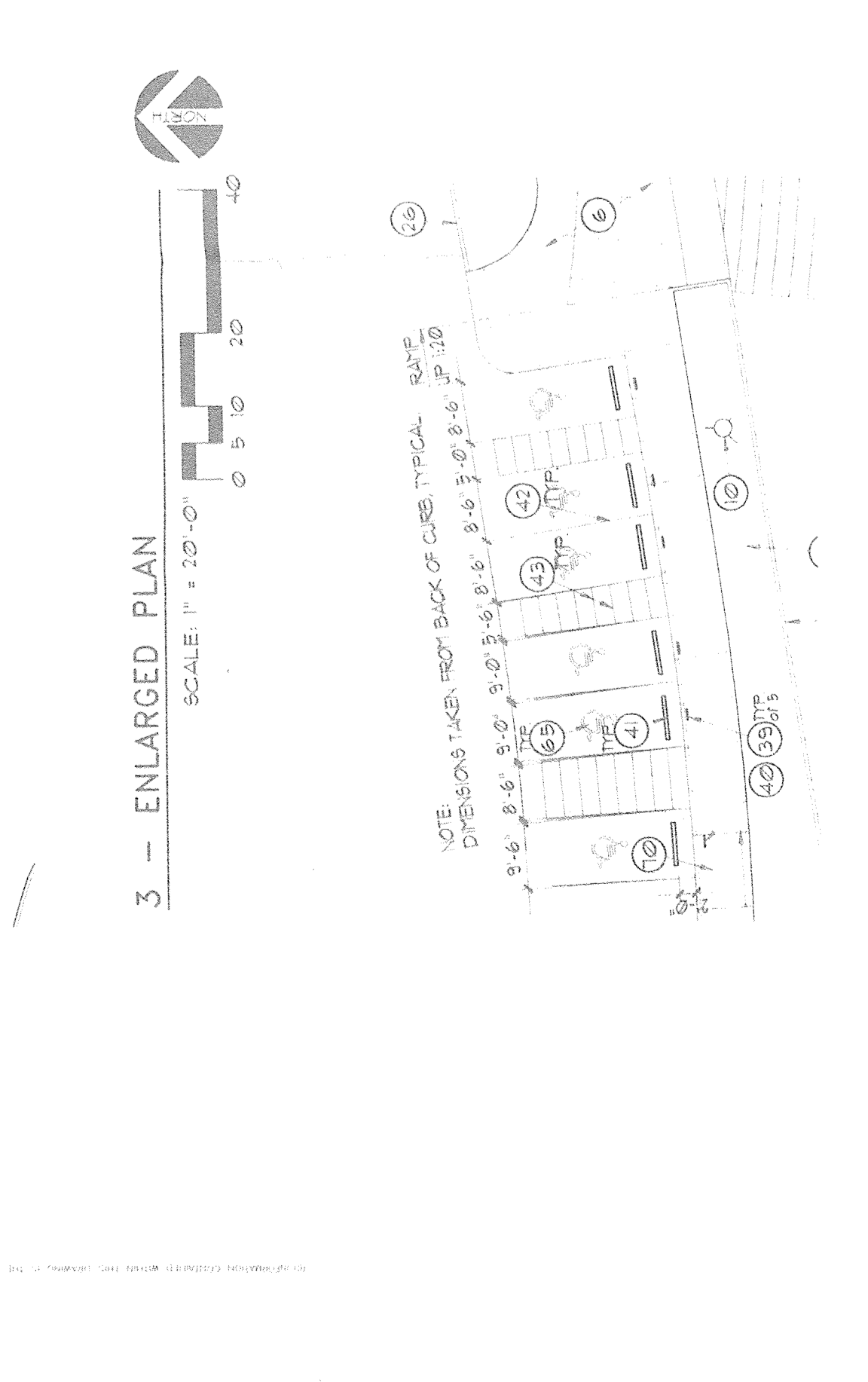
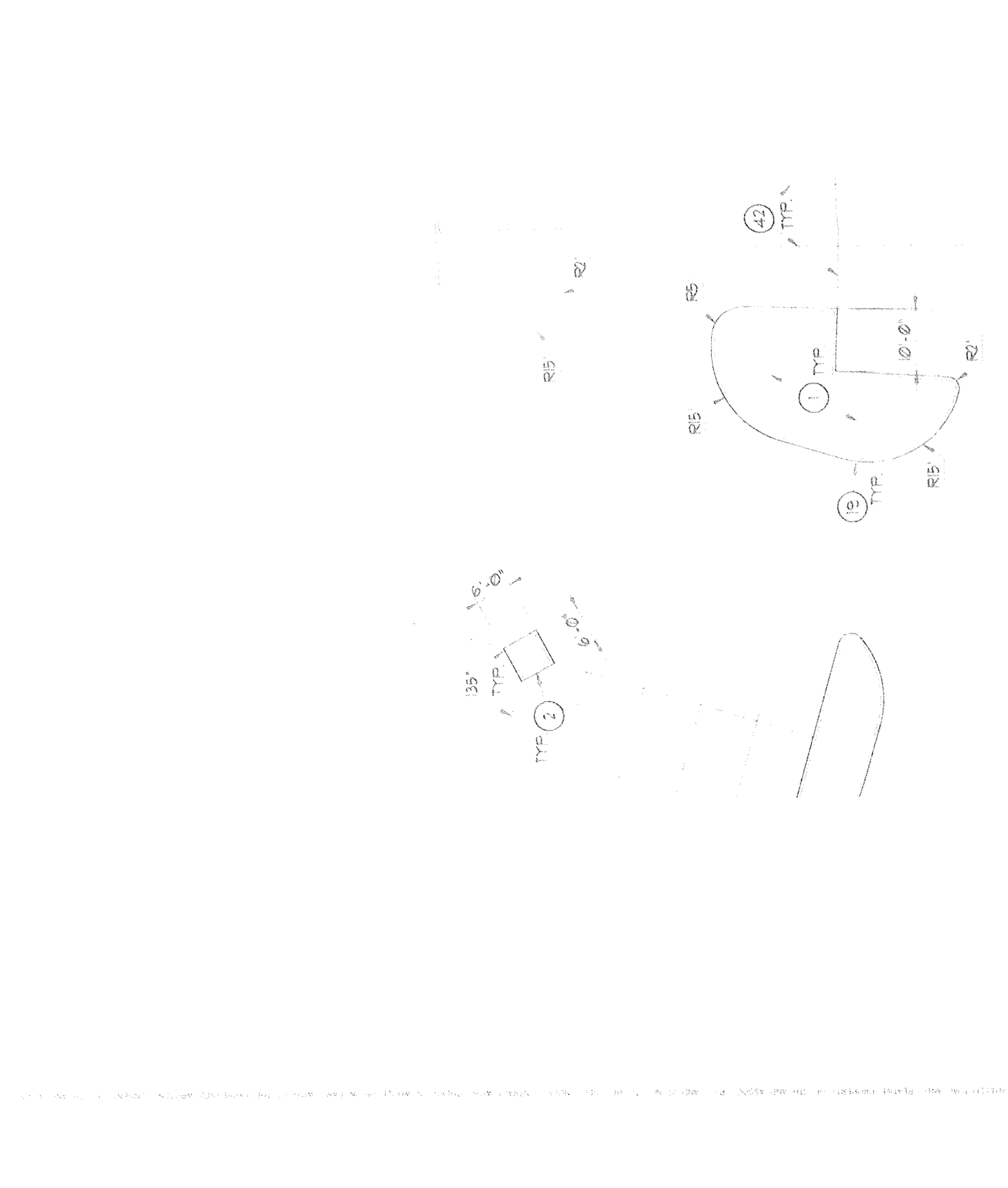
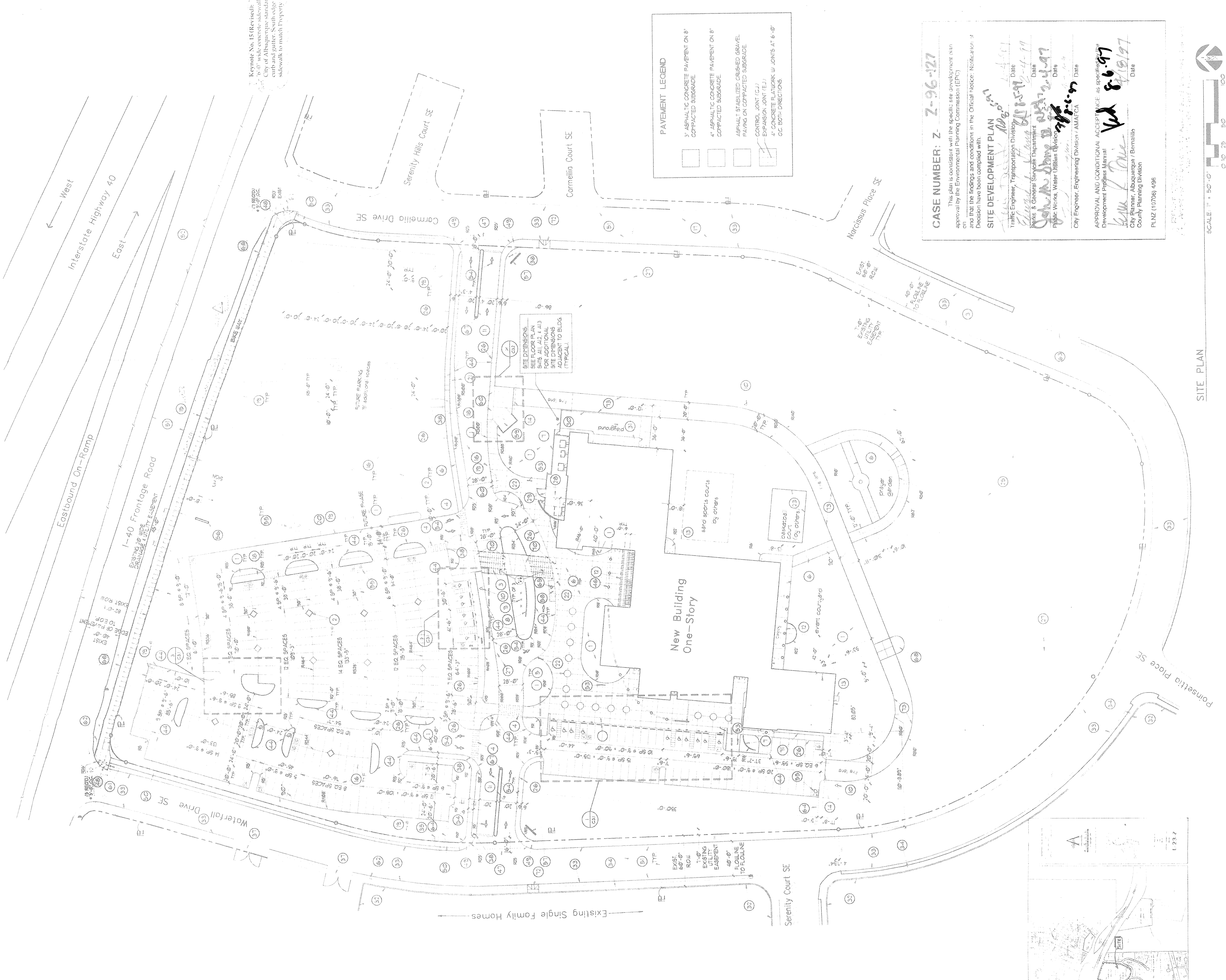
26. 15" WIDE ASPHALT RECREATION/PEDESTRIAN
 27. 15" WIDE ASPHALT RECREATION/PEDESTRIAN
 28. 15" WIDE ASPHALT RECREATION/PEDESTRIAN
 29. 15" WIDE ASPHALT RECREATION/PEDESTRIAN
 30. 15" WIDE ASPHALT RECREATION/PEDESTRIAN

31. 15" WIDE ASPHALT RECREATION/PEDESTRIAN
 32. 15" WIDE ASPHALT RECREATION/PEDESTRIAN
 33. 15" WIDE ASPHALT RECREATION/PEDESTRIAN
 34. 15" WIDE ASPHALT RECREATION/PEDESTRIAN
 35. 15" WIDE ASPHALT RECREATION/PEDESTRIAN

36. 15" WIDE ASPHALT RECREATION/PEDESTRIAN
 37. 15" WIDE ASPHALT RECREATION/PEDESTRIAN
 38. 15" WIDE ASPHALT RECREATION/PEDESTRIAN
 39. 15" WIDE ASPHALT RECREATION/PEDESTRIAN
 40. 15" WIDE ASPHALT RECREATION/PEDESTRIAN

41. 15" WIDE ASPHALT RECREATION/PEDESTRIAN
 42. 15" WIDE ASPHALT RECREATION/PEDESTRIAN
 43. 15" WIDE ASPHALT RECREATION/PEDESTRIAN
 44. 15" WIDE ASPHALT RECREATION/PEDESTRIAN
 45. 15" WIDE ASPHALT RECREATION/PEDESTRIAN

46. 15" WIDE ASPHALT RECREATION/PEDESTRIAN
 47. 15" WIDE ASPHALT RECREATION/PEDESTRIAN
 48. 15" WIDE ASPHALT RECREATION/PEDESTRIAN
 49. 15" WIDE ASPHALT RECREATION/PEDESTRIAN
 50. 15" WIDE ASPHALT RECREATION/PEDESTRIAN



PAVEMENT LEGEND

- 3" ASPHALT CONCRETE PAVEMENT ON 8" COMPACTED SUBGRADE
- 4" ASPHALT CONCRETE PAVEMENT ON 8" COMPACTED SUBGRADE
- ASPHALT STABILIZED GRADED GRAVEL PAVING ON COMPACTED SUBGRADE
- CONTROL JOINT (C/J)
- EXPANSION JOINT (E/J)
- CONCRETE FLOWLINE JOINTS AT 6'-0" IN BOTH DIRECTIONS

FUTURE PHASE

Number of Regular spaces	239	191
Number of Accessible spaces	4	0
TOTAL SPACES FUTURE PHASE	243	191

GRAND TOTAL (ALL PHASES)

Number of Regular spaces	486
Number of Accessible spaces	14
Number of Non Accessible spaces	502
TOTAL SPACES PHASE 1	512

PARKING INFORMATION

PHASE 1	NO. RECD	NO. PROVIDED
Number of Regular spaces	247	305
Number of Accessible spaces	10	14
Number of Non Accessible spaces	2	2
TOTAL SPACES PHASE 1	259	321

CASE NUMBER: Z-7-96-127
 This plan is consistent with the specific site development plan approval by the Environmental Planning Commission (EPC) and the findings and conditions in the Official Map. Modification of this plan shall require a new EPC Decision and a new Official Map Decision have been completed with.

SITE DEVELOPMENT PLAN
 Traffic Engineering, Transportation Division
 Date: 8/15/97
 City Engineer, Engineering Division AMATEA

APPROVAL AND CONDITIONAL ACCEPTANCE as provided by Development Progress Manual
 City Planner, Albuquerque (Bernalillo) County Planning Division
 Date: 8/15/97

SCALE: 1" = 50'-0"
 0 10 20 30 40 50 60 70 80 90 100
 SITE PLAN