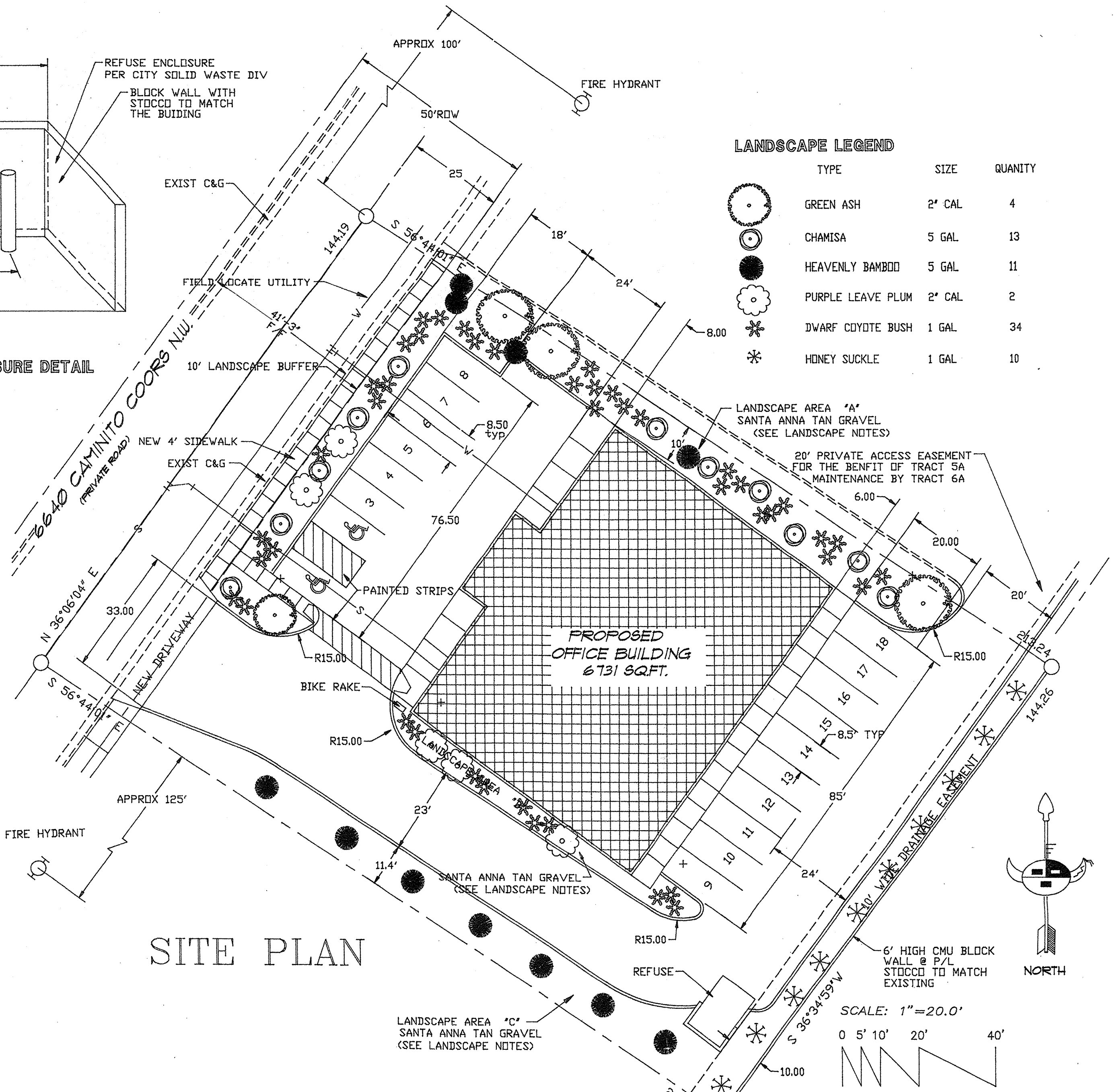
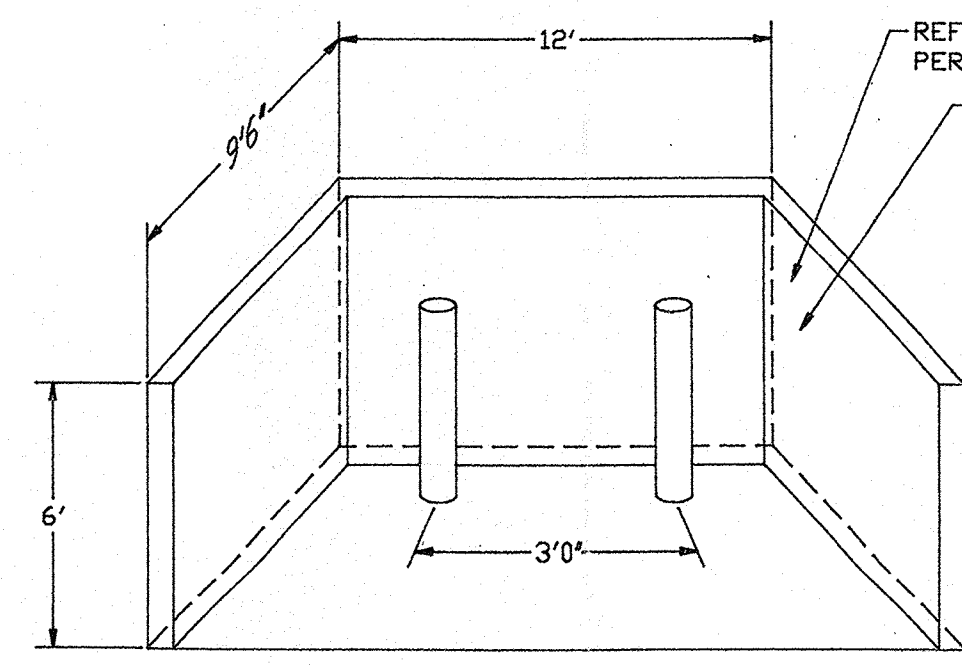
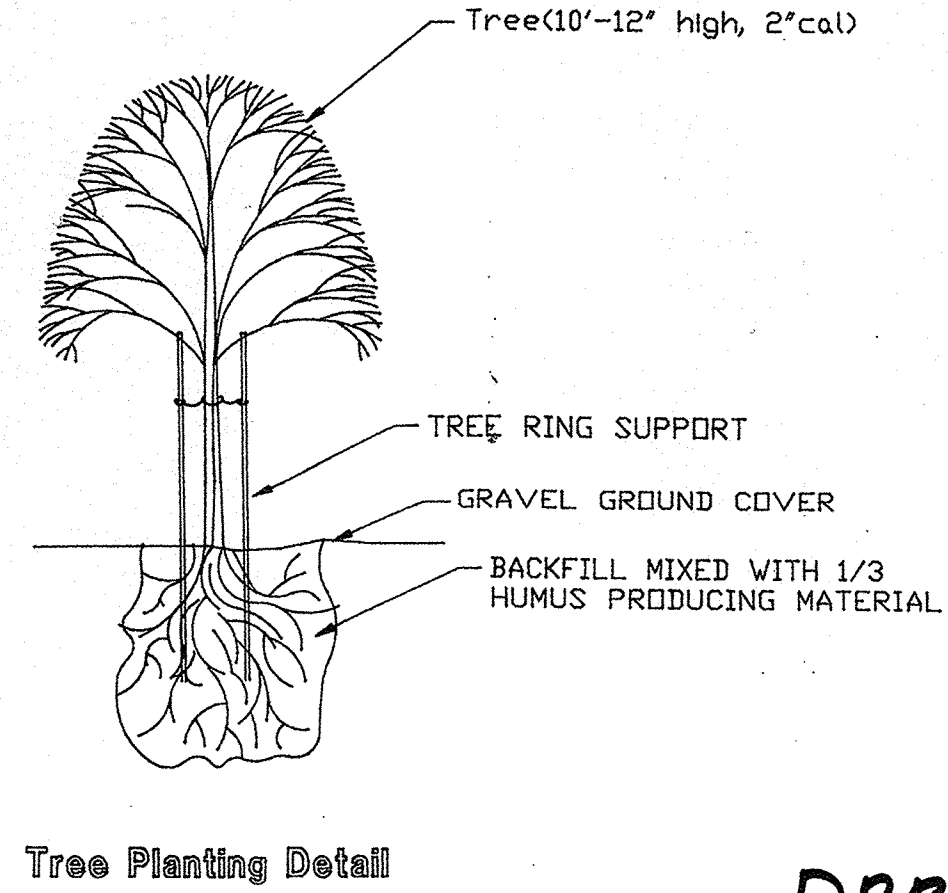
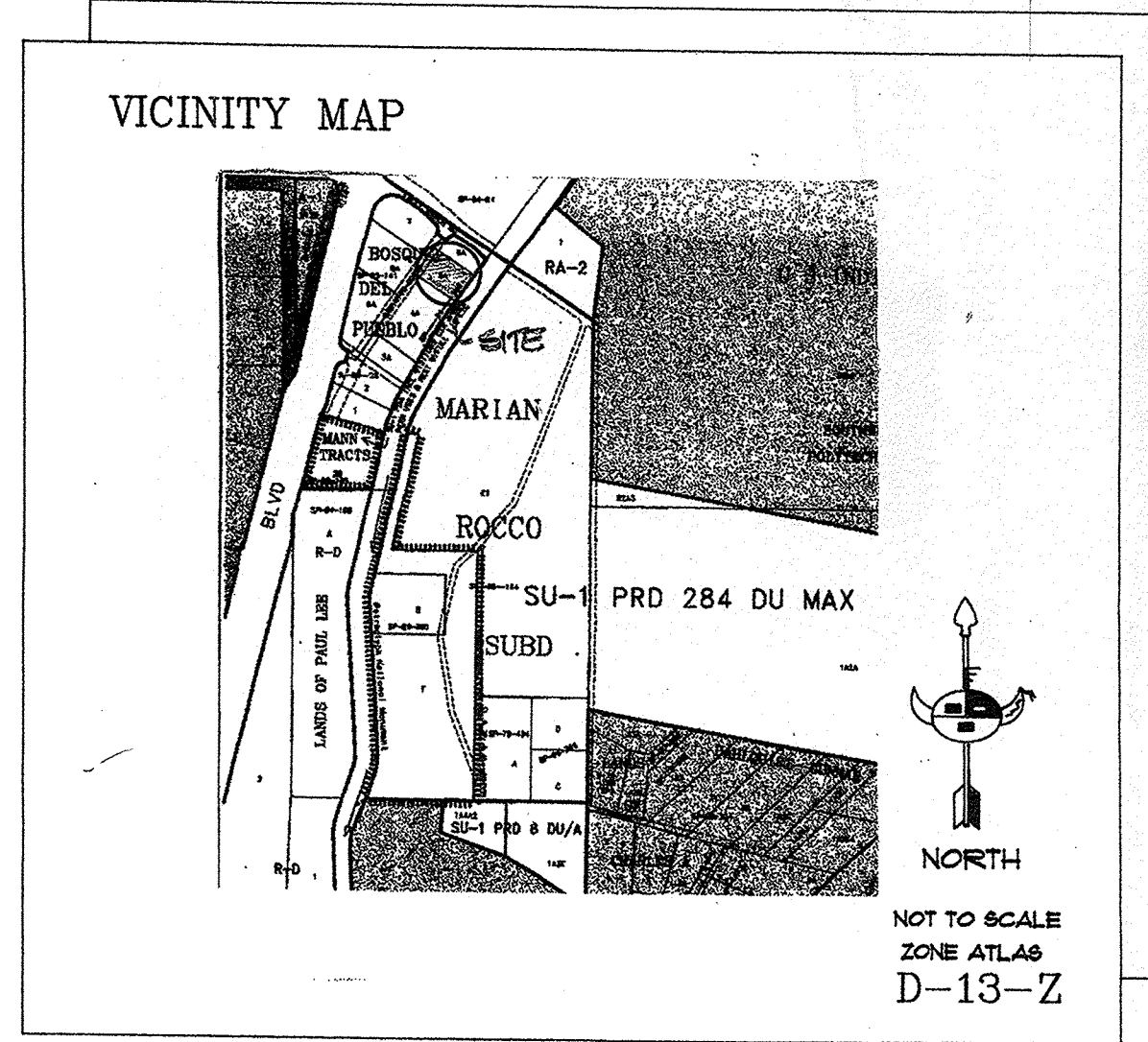


DRB-97-460



LANDSCAPE LEGEND

TYPE	SIZE	QUANTITY
	GREEN ASH 2' CAL	4
	CHAMISA 5 GAL	13
	HEAVENLY BAMBOO 5 GAL	11
	PURPLE LEAVE PLUM 2' CAL	2
	DWARF COYOTE BUSH 1 GAL	34
	HONEY SUCKLE 1 GAL	10

LEGAL DESCRIPTION

LOT 5A
BOSQUE DEL PUEBLO SUBDIVISION
ALBUQUERQUE, BERNALILLO COUNTY,
NEW MEXICO.
UPC #1-013-063-065-481-202-15

Landscape Note

The plant materials chosen meet the low to medium water usage as specified by the Albuquerque Plant List. The landscape complies with the standards of 6-1-1-7(C) of Article 6-1-1 Water Conservation Landscaping and Water Waste Drainance.

Landscape Areas

Total Area	30,621 sqft
Landscape Area 'A'	3,271 sqft
Landscape Area 'B'	854
Landscape Area 'C'	2,880
Total Landscape Area	7,005 sqft
Total Area	30,621 sqft

Percent of Landscape
7,005 sqft / 30,621 sqft = 22.9 %
Total landscape required 4,593 sqft

PARKING REQUIREMENT

GROSS BUILDING AREA	6,731 SQFT
NET LEASABLE AREA	2,591
10% BUS ROUTE ALLOWANCE	673
EXCLUSIVE USE	3,467 SQFT

PARKING SPACE CALCULATIONS
3,467/200 = 17.3
18 SPACES REQUIRED
18 SPACES PROVIDED (2 HC SPACE)

Building Data

Building Use	Office Building
Occupancy Type	B2 1 hr less than 20 feet
Construction Type	V-N
Concrete	3,000 psi @ 28 day
Soil Bearing	2,000 #/sqft

AREAS

Site Area	0.7030 ac (30,621 sqft)
Right-of-way at Coninito Coors	0.083 ac
Buildable Site Area	0.6202 ac (27,017 sqft)
Total Building Area	6,731 sqft

Landscape Notes

Maintenance of landscaping will be the responsibility of the owner.
Irrigation - Automatic Drip System
Ground cover to be gravel(Santa Anna Tan) over woven weed barrier(typ)

DRB-97-460

CASE NUMBER : Z-

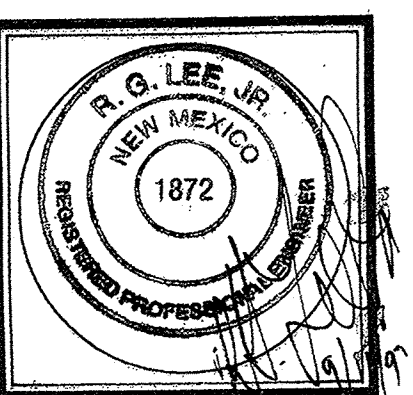
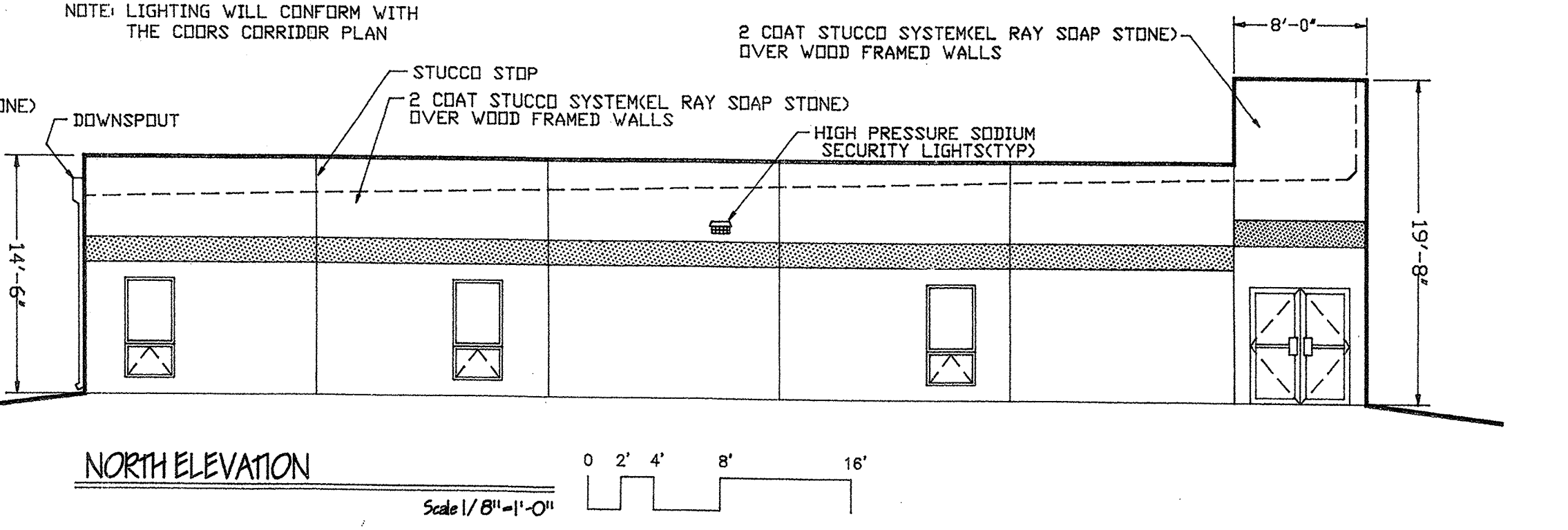
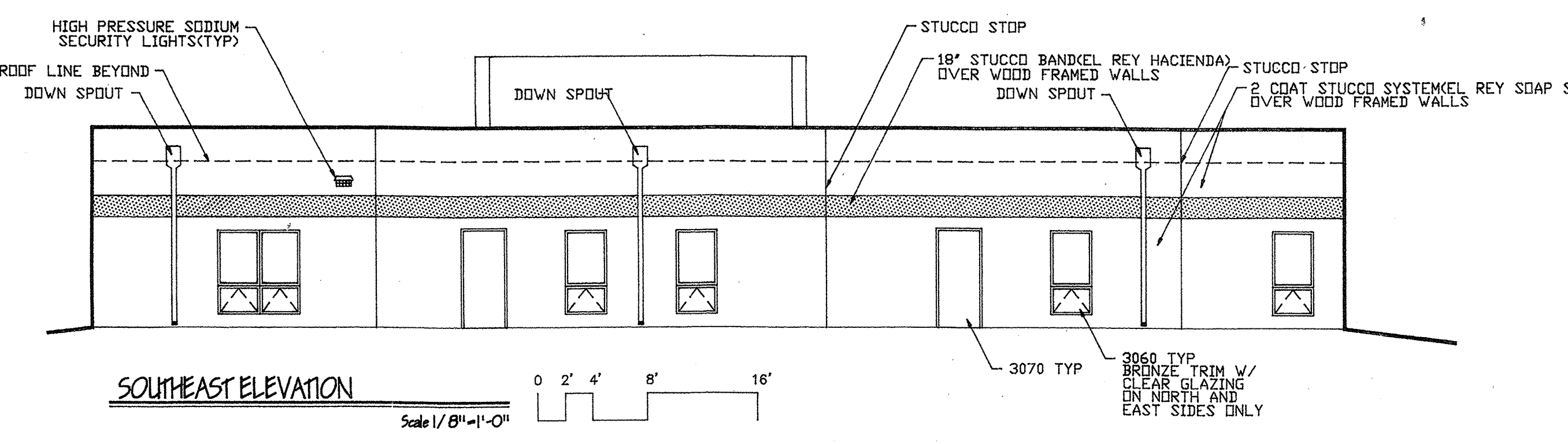
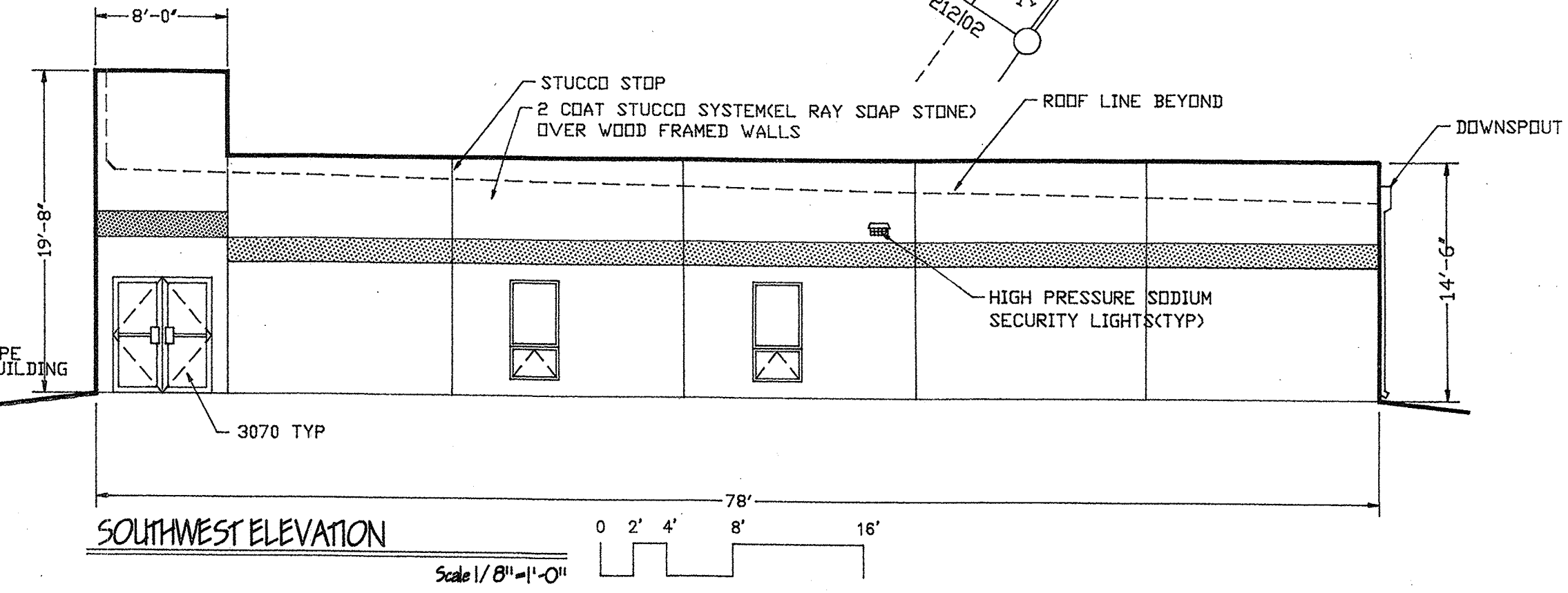
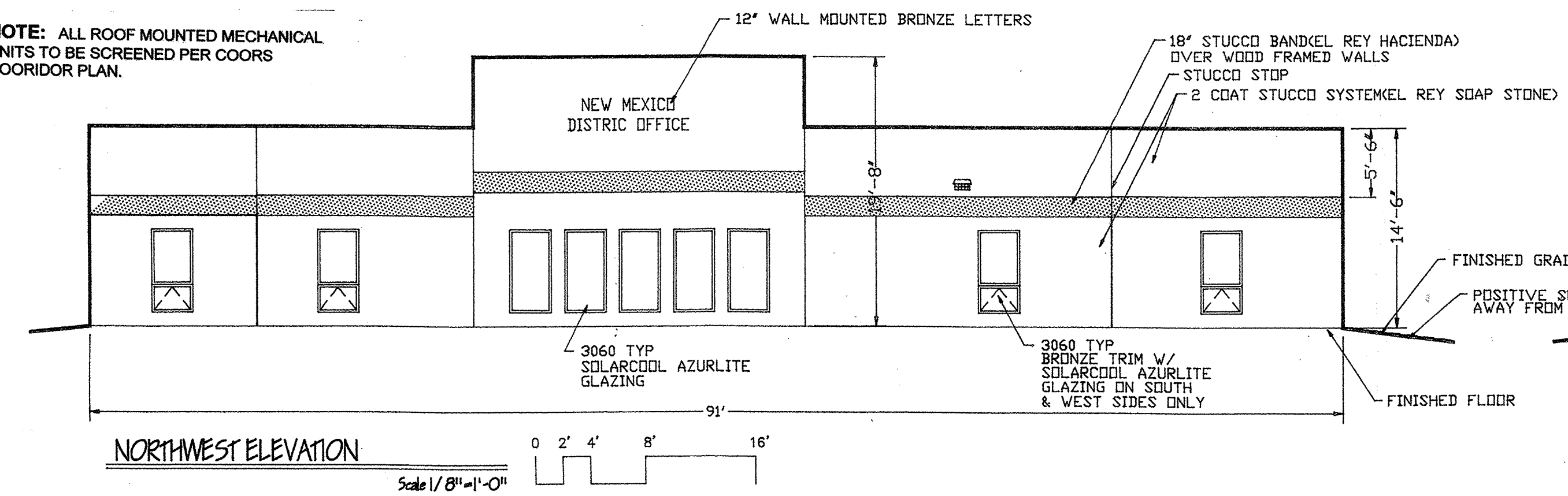
This plan consistent with the specific site development plan approval by the Environmental Planning Commission (EPC) on [blank] and that the findings and conditions in the Official Notification of Decision have been complied with:

Site Development Plan

<i>Edward H. Stoney</i>	10-28-97
Traffic Engineer, Transportation Division	Date
<i>Edward H. Stoney</i>	10-28-97
Design & Development, CIP	Date
<i>Roger A. Shea</i>	10-28-97
Public Works, Utilities Development Division	Date
<i>Paul J. Lopez</i>	10-28-97
City Engineer, Engineering Division	Date
<i>Kenn L. Davis</i>	11-5-97
City Planner, Albuquerque Planning Department	Date

APPROVAL AND CONDITIONAL ACCEPTANCE: as specified by the Development Process Manual

NOTE: ALL ROOF MOUNTED MECHANICAL UNITS TO BE SCREENED PER COORS COORDINATOR PLAN.



Job Number
9612
Date
June 16, 1997
Revised
Sept 19, 1997

Sheet Title
SITE DEVELOPMENT PLAN
Checked by R.G. LEE, JR.
Drawn by H.HOOD

HOOD & COMPANY
DEVELOPMENT CONSULTANTS - GENERAL CONTRACTING
36 COMSTOCK ST. NE - ALBUQUERQUE, NM 87102 - 800-930-3371

PROPOSED NEW MEXICO
ASSEMBLIES OF GOD OFFICE COMPLEX
ALBUQUERQUE, NEW MEXICO

Job Title
Sheet Number