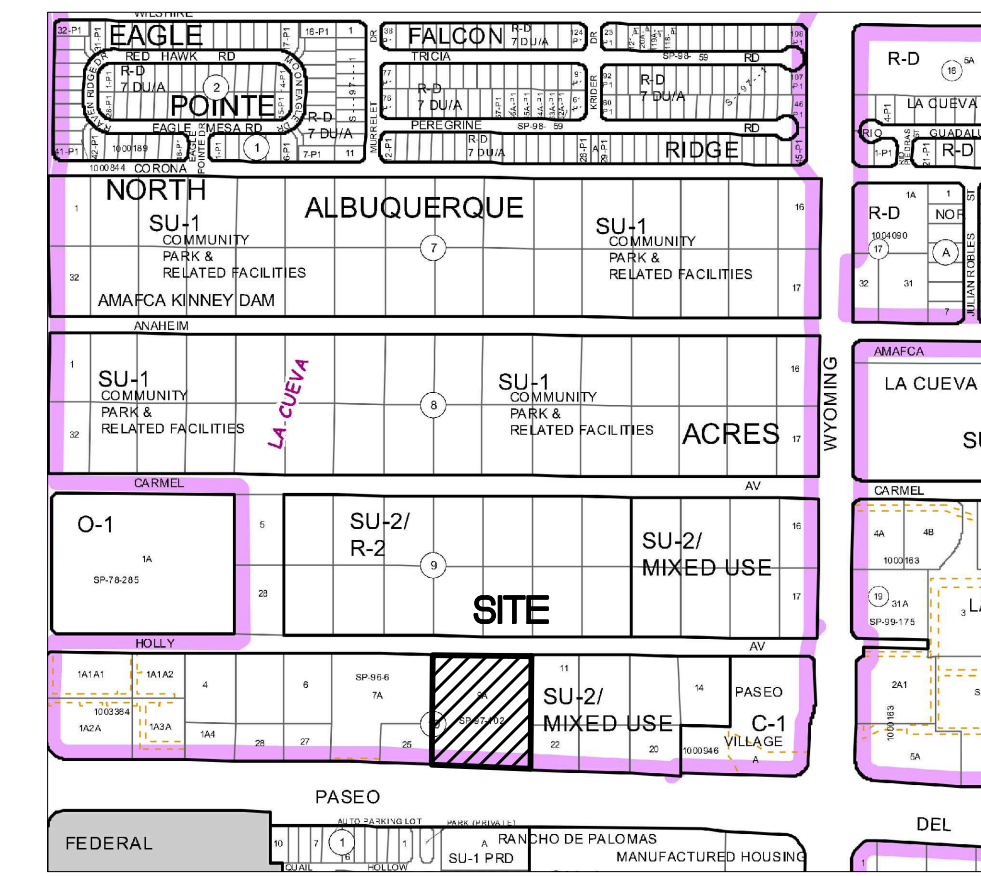
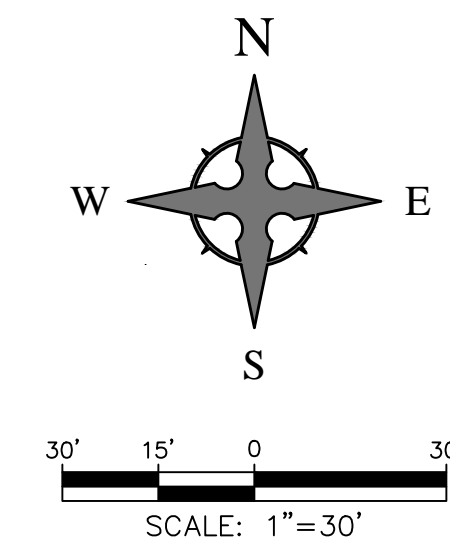


| PARKING CALCULATIONS | | | |
|-----------------------|-----------|--------------------|-----------|
| BUILDING AREA: | # SEATS | AREA (SQUARE FEET) | |
| RESTAURANT | 160 | 4,864 SF | |
| PARKING REQUIREMENTS: | RATIO | REQUIRED | PROVIDED |
| | 1/4 Seats | 40 spaces | 40 spaces |
| | TOTAL | 40 spaces | 40 spaces |
| HANDICAP PARKING | | REQUIRED | PROVIDED |
| | | 2 spaces | 2 spaces |
| MOTORCYCLE PARKING | | 2 spaces | 2 spaces |
| BICYCLE PARKING | | 2 spaces | 3 spaces |

GENERAL NOTES (REQUIRED INFORMATION)

Site: 0.348 Acres (32,010 SF)
 Zoning: SU-2 (MIXED USE)
 Proposed Use: Sit-Down Restaurant
 Building Height: Maximum Allowed = 36'; Proposed 22'-4"
 Building Setback: Per C-1 Zone
 Actual:
 West: 23.9'
 North: 171.4'
 East: 15'
 South: 20'

Floor Area Ratio: Lot Area 32,010 SF
 Building Area = 4,864 SF
 Proposed FAR = 0.152
 Maximum Allowed FAR = N/A



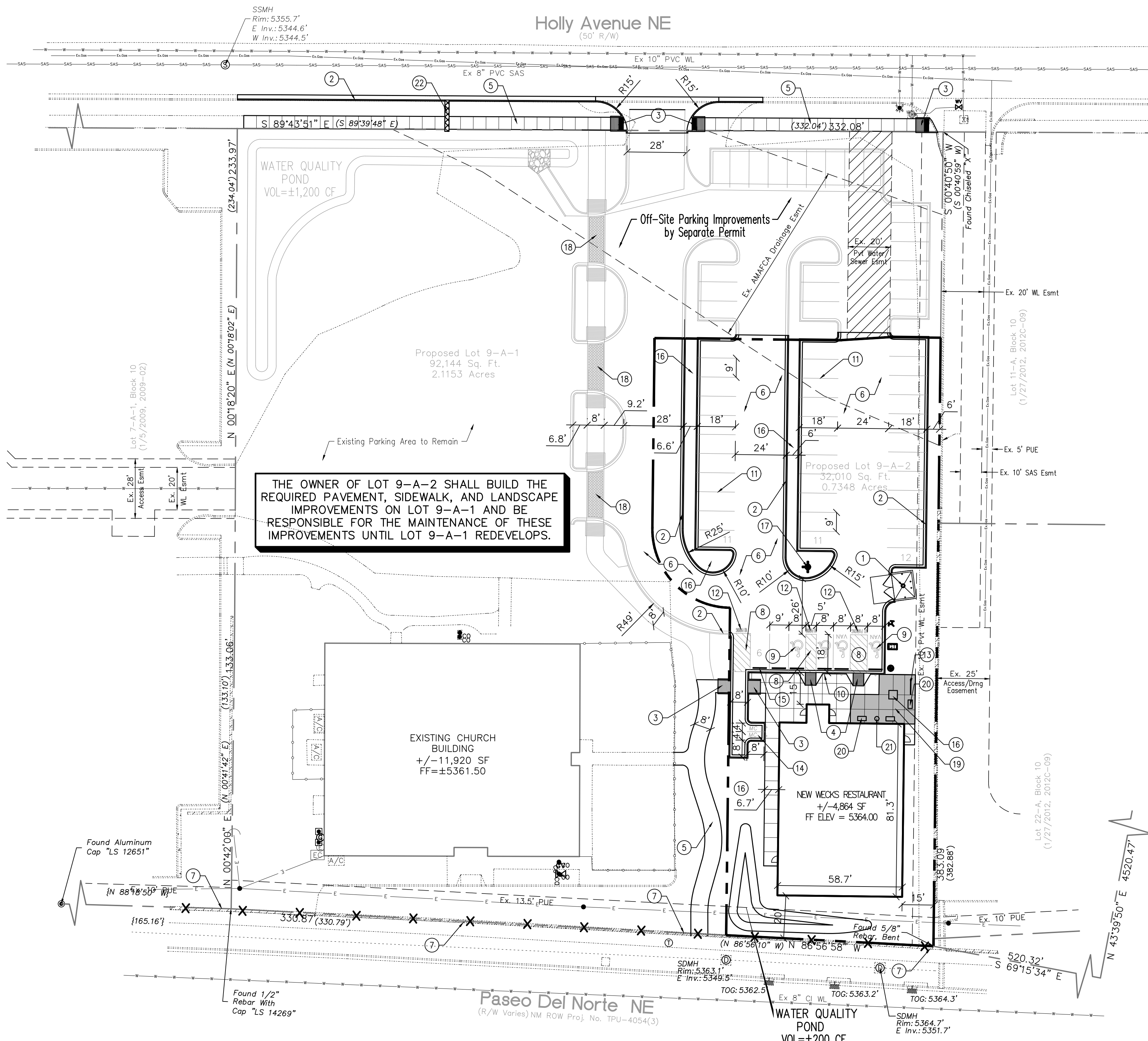
VICINITY MAP - Zone Map C-19-Z
 Legal Description: Lot 9-A-2, Block 10, NORTH ALBUQUERQUE ACRES, TR 2, UNIT 3

SITE INFORMATION

CONTRACTOR SHALL REFER TO ARCHITECTURAL PLANS FOR EXACT LOCATIONS AND DIMENSIONS OF EXIT PORCHES, PRECISE BUILDING DIMENSIONS, AND EXACT BUILDING UTILITY ENTRANCE LOCATIONS.

CONTRACTOR TO PROVIDE PARKING LOT STRIPING, FIRELANE AND HANDICAP STRIPING PER THESE PLANS AND CITY OF ALBUQUERQUE REQUIREMENTS.

TO PRESERVE THE PAINTING / STRIPING WITHIN PARKING AREAS, DO NOT APPLY PAINT UNTIL ALL OTHER POTENTIALLY DAMAGING CONSTRUCTION HAS BEEN COMPLETED.



KEYED NOTES

1. PROPOSED TRASH ENCLOSURE AND STORAGE AREA. TRASH ENCLOSURE TO COMPLY WITH MINIMUM COA SOLID WASTE STANDARDS. REF. UTILITY PLAN FOR DRAIN.
2. INSTALL MEDIAN CURB/GUTTER (6" HIGH) PER COA STD DWG 2415B.
3. INSTALL PARALLEL CURB RAMP PER NMDOT STD DWGS 608-001, SHEETS 1-12. DETECTABLE WARNING SURFACE NOT REQUIRED FOR PRIVATE RAMPS. MATCH ADJACENT SIDEWALK WIDTH.
4. INSTALL PERPENDICULAR CURB RAMP PER NMDOT STD DWGS 608-001, SHEETS 1-12. DETECTABLE WARNING SURFACE NOT REQUIRED FOR PRIVATE RAMPS.
5. INSTALL CONCRETE SIDEWALK PER COA STD DWG 2430.
6. ASPHALT PAVEMENT PER GEOTECHNICAL REPORT.
7. REMOVE EXISTING CMU GARDEN WALL IN ITS ENTIRETY.
8. INSTALL 4" WIDE PAINT STRIPES AT 45° ANGLE TO PARKING STRIPES, SPACED AT 1'-6" (WHITE PAINT IN PARKING LOT, BLUE PAINT IN ACCESSIBLE PARKING AREAS). MIN. TWO COATS.
9. PAINTED INTERNATIONAL WHEELCHAIR SYMBOL (BLUE) PER ADA STANDARDS. MIN. TWO COATS.
10. INSTALL H/C SIGNAGE PER DETAIL, SHEET C401. ADD VAN ACCESSIBLE SIGNAGE WHERE NOTED. SIGNAGE SHALL BE MOUNTED TO BUILDING. H/C SIGN MUST INCLUDE LANGUAGE PER 66-7-352.4C NMSA 1978 "VIOLATORS ARE SUBJECT TO A FINE AND/OR TOWING."
11. INSTALL 4" WIDE PAINT STRIPES (WHITE) FOR ALL PARKING SPACES. MIN. TWO COATS.
12. PAINT WORDS "NO PARKING" WITH LETTERS AT LEAST ONE FOOT HIGH AND 2 INCHES WIDE. MIN. TWO COATS.
13. INSTALL BIKE RACK PER DETAIL ON SHEET C401. TWO (2) SPACES MINIMUM.
14. MOTORCYCLE PARKING; 2 SPACES. ADD PAINT LABEL (2 COATS) AND SIGNAGE PER COA CODE.
15. INSTALL PRE-CAST WHEEL STOP PER DETAIL, SHEET C401.
16. LANDSCAPED AREA. REF. LANDSCAPE PLAN.
17. NEW PRIVATE FIRE HYDRANT PAINTED SAFETY ORANGE. REF. SHEET C301, UTILITY PLAN.
18. 8' WIDE SIDEWALK CROSSING PER DETAIL ON SHEET C401.
19. PLAZA AREA AS REQUIRED BY THE LCSDP. TOTAL AREA = 577.13 SF.
20. INSTALL EVEREST SERIES 6" BENCH WITH BACK (PERFORMED IN GROUND MOUNT) PER DETAIL ON SHEET C401. MODEL NUMBER 398-6001. COLOR: POWDER COATED BEIGE. WWW.THEPARKCATALOG.COM
21. INSTALL PLAZA SERIES 36 GALLON TRASH RECEPTACLE WITH ASH URN TOP. MODEL NUMBER 398-8002. COLOR: POWER COATED BEIGE. WWW.THEPARKCATALOG.COM
22. INSTALL 24" SIDEWALK CULVERT.
23. INSTALL 3' WIDE VALLEY GUTTER. REF. SHEET C201 GRADING PLAN.

| | |
|--|------------------|
| PROJECT NUMBER: | _____ |
| APPLICATION NUMBER: | _____ |
| This plan is consistent with the specific site development plan approved by the Environmental Planning Commission (EPC) on _____ and the findings and conditions in the Official Notification of Decision are satisfied. | |
| Is an Infrastructure List required? () YES () NO if yes, then a set of approved DRC plans with a work order is required for any construction within Public Right-of-Way or for construction of public improvements | |
| DRB SITE DEVELOPMENT PLAN SIGNOFF APPROVAL | |
| Traffic Engineering, Transportation Division | _____ Date _____ |
| Water Utility Department | _____ Date _____ |
| Parks and Recreation Department | _____ Date _____ |
| City Engineer | _____ Date _____ |
| Environmental Health Department | _____ Date _____ |
| Solid Waste Management | _____ Date _____ |
| DRB Chairperson, Planning Department | _____ Date _____ |
| * Environmental Health, if necessary | |

| REV | DATE | BY | REVISION |
|-----|------|----|----------|
| | | | |
| | | | |
| | | | |
| | | | |
| | | | |

Wooten Engineering
 1005 21st St SE, Suite A5
 Rio Rancho, N.M. 87124
 Phone: (505) 980-3560

PROJECT TITLE: **WECKS RESTAURANT**
 7301 PASEO DEL NORTE NE
 ALBUQUERQUE, NEW MEXICO 87113

PROJECT MANAGER: **JEFF WOOTEN**
 JOB NO.: 2016032
 DRAWN BY: **JEFF WOOTEN**

SHEET TITLE: **Site Plan (Traffic Circulation Layout)**

DATE: 05.11.2018
 SCALE: PER PLAN
 SHEET: C101
 OF: 6