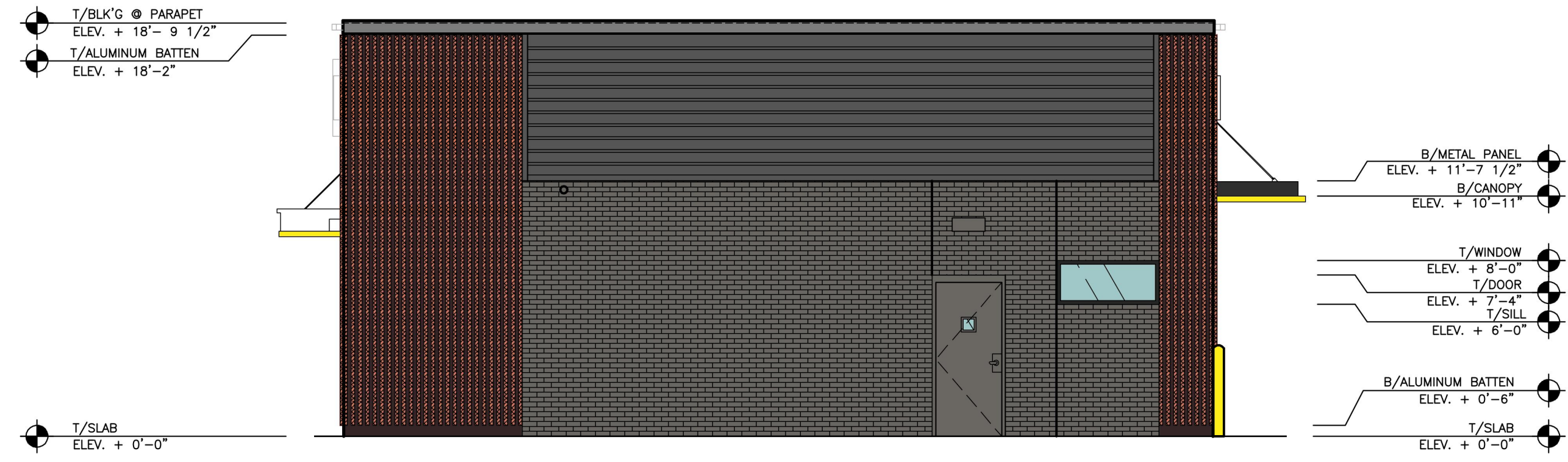
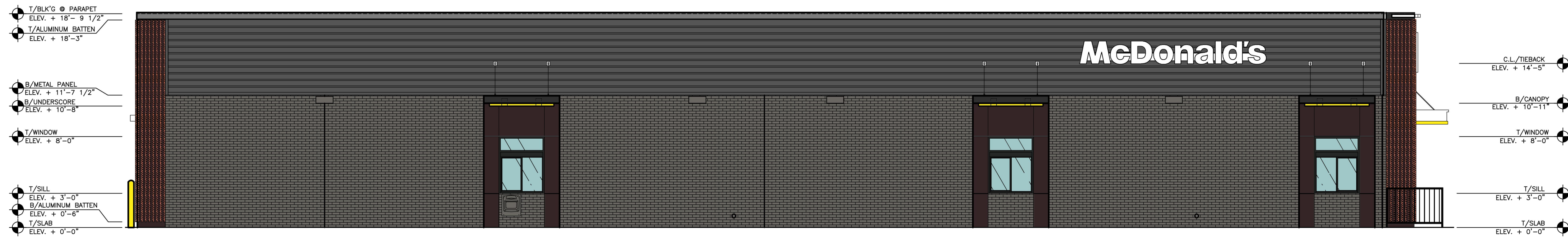




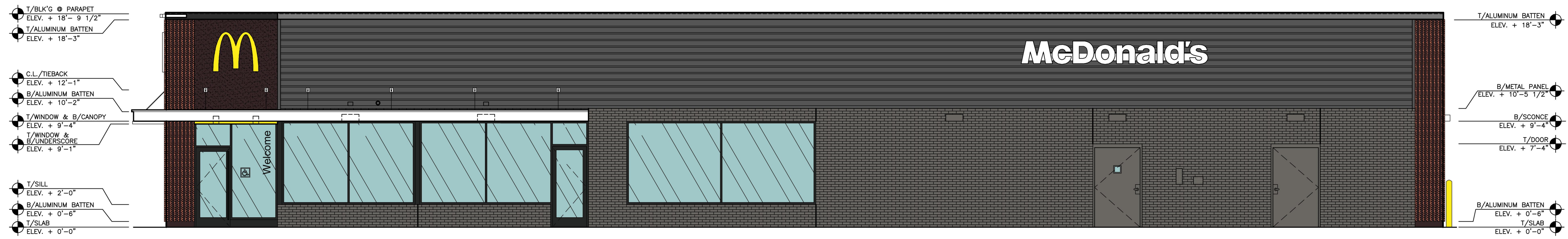
1 FRONT ELEVATION  
A2.2 3/16" = 1'-0"



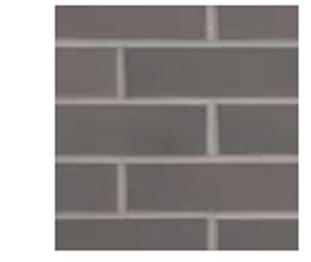
2 REAR ELEVATION  
A2.2 1/4" = 1'-0"



3 DRIVE THRU ELEVATION  
A2.2 3/16" = 1'-0"



4 NON-DRIVE-THRU ELEVATION  
A2.2 3/16" = 1'-0"



**BRICK VENEER**  
STEEL GREY K12-3008  
BY GLEN GERY  
MORTAR: SM750 SILVERSTONE  
BY SPEC MIX



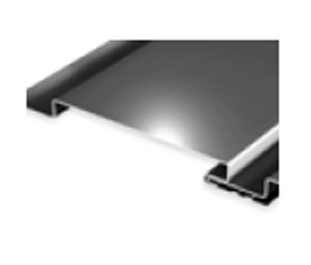
**EIFS/STUCCO**  
RAL 7022  
FINISH: HYDROPHOBIC // FINESSE



**ALUMINUM COMPOSITE (ACM)**  
CUSTOM COLOR: RAL 7022  
BY ALPOLIC



**2"x2" ALUMINUM BATTEN**  
TA-647  
FORTINA  
BY B+N INDUSTRIES



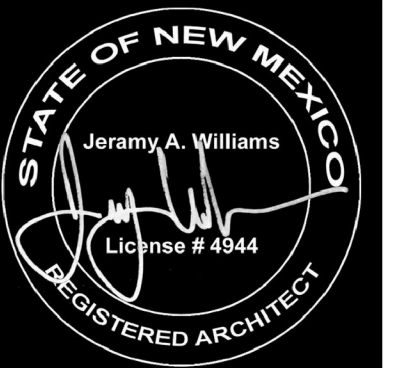
**REVEAL PANEL**  
WEATHERED ZINC BY METAL ERA



**ANCHOR-TITE PARAPET FASCIA**  
WEATHERED ZINC BY METAL ERA



**ANCHOR-TITE PARAPET FASCIA**  
RAL 7022 BY METAL ERA



513 MAIN STREET, SUITE 300  
FORT WORTH, TEXAS 76102  
817.820.0433 o 817.705.3387 c

**McDonald's USA, LLC**  
These drawings and specifications are the confidential and proprietary property of McDonald's USA, LLC and shall not be copied or reproduced for use on this specific site in conjunction with its issue date and are not suitable for use on a different site or at a later time. Use of the services of properly licensed architects and engineers, reproduction of the contract documents for reuse on another project is not authorized.

PROJECT NAME 2018 STANDARD BUILDING 38111 NW PROTOTYPE	JERAMY WILLIAMS ARCHITECT PROTOTYPE ISSUE DATE 2018	REVIEWED RJD	FIRST ISSUE DATE 12/26/16
DESCRIPTION WOOD BEARING WALLS WITH 4" BRICK VENEER WOOD ROOF FRAMING MEMBERS	SITE ADDRESS 5600 MEHALL BLVD NE, ALBUQUERQUE, NM		
SHEET NO. A2.2 ELEVATIONS			