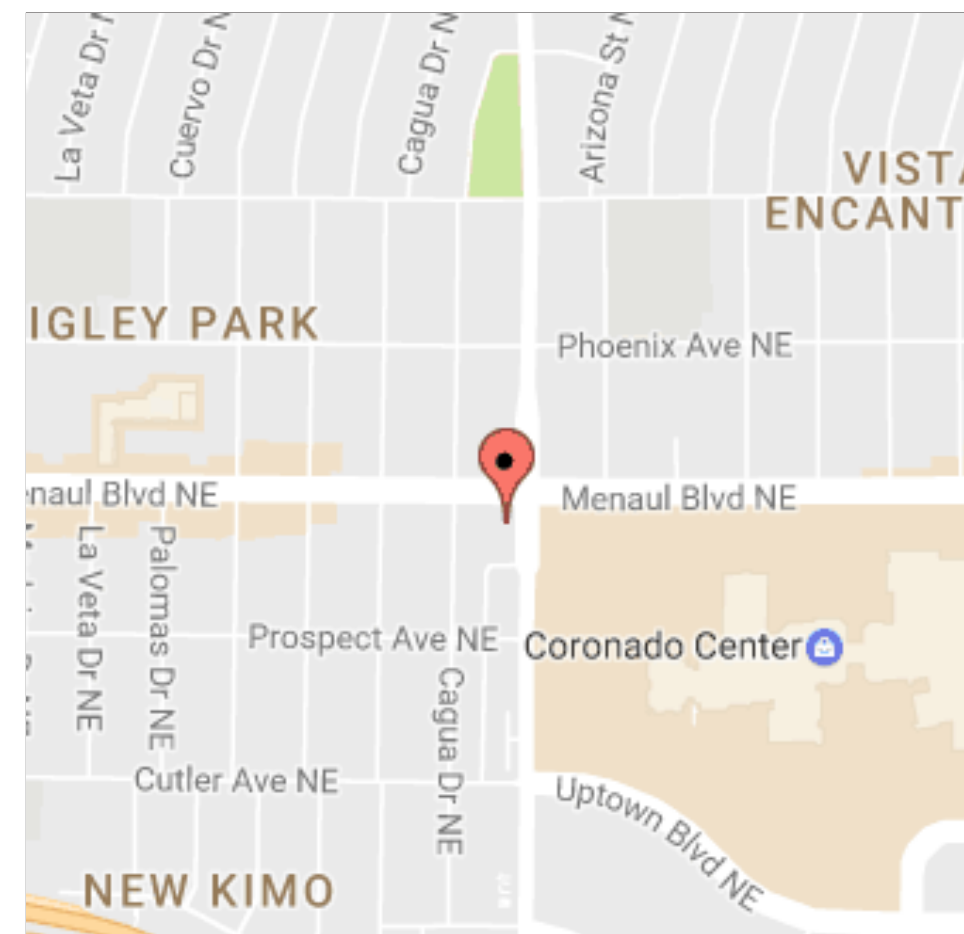




McDonald's

5900 MENAUL BLVD NE - ALBUQUERQUE, NM

SIGN PROGRAM BOOK

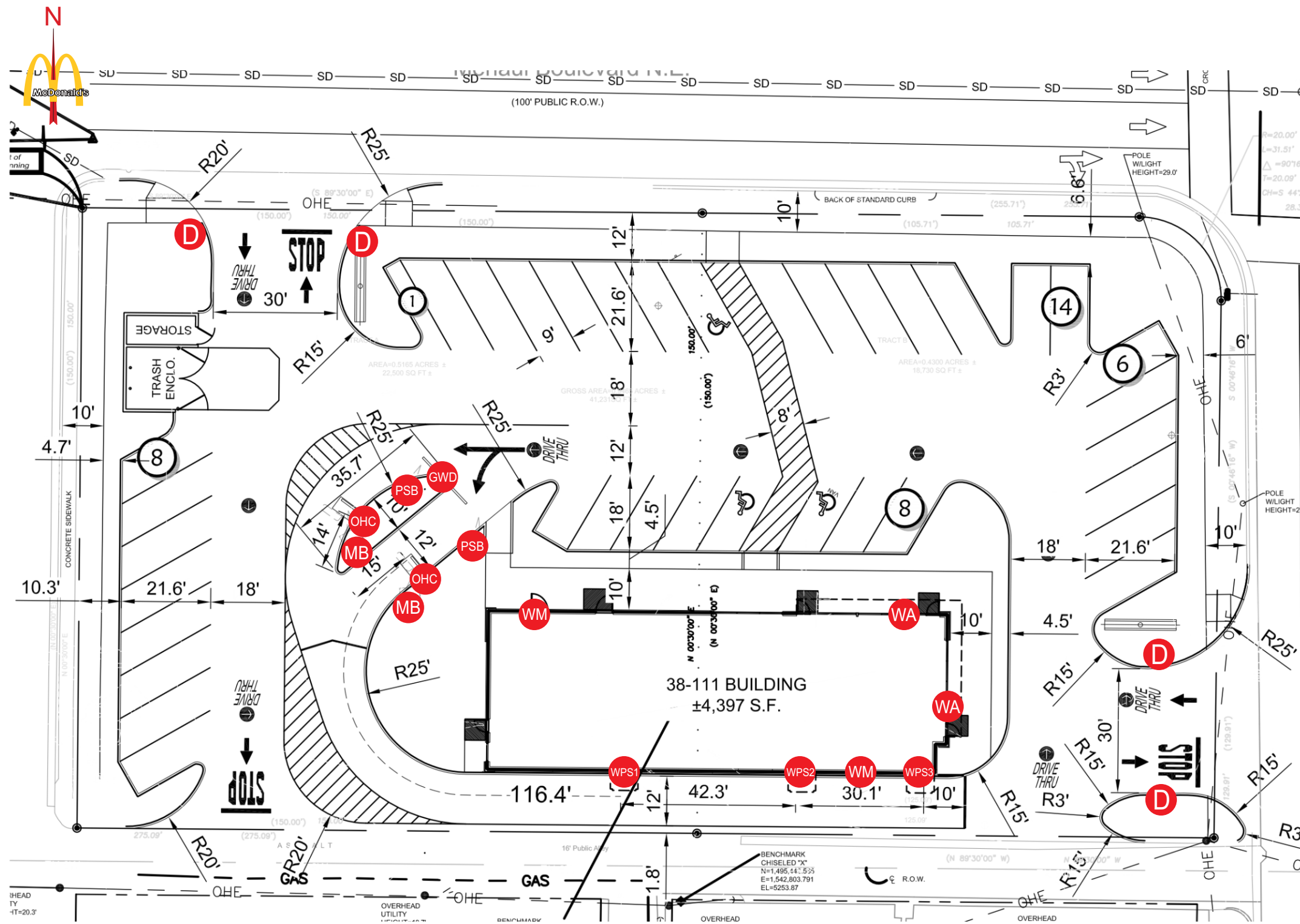


VICINITY MAP
NTS

Customer: MCDONALD'S	Date: 4/8/17	Prepared By: RM	Eng: -	<small>Note: Color output may not be exact when viewing or printing this drawing. All colors used are PMS or the closest CMYK equivalent. If these colors are incorrect, please provide the correct PMS match and a revision to this drawing will be made.</small>
Location: ALBUQUERQUE, NM	File Name: 155975 - R1 - 5900 MENAUL BLVD NE - ALBUQUERQUE, NM			

persona
SIGNS | LIGHTING | IMAGE

DISTRIBUTED BY SIGN UP COMPANY
700 21st Street Southwest
PO Box 210
Watertown, SD 57201-0210
1.800.843.9888 • www.personasigns.com



- PSB ... PRE-SELL BOARD (QTY 2)
- GWD ... DOUBLE ARM GATEWAY
- OHC ... ORDER HERE CANOPY (QTY 2)
- MB ... MENU BOARD (QTY 2)
- WPS1 ... WINDOW POSITION SIGN 1
- WPS2 ... WINDOW POSITION SIGN 2
- WPS3 ... WINDOW POSITION SIGN 3
- WA ... WALL ARCH (QTY 2)
- WM ... 24" WORDMARK (QTY 2)
- D ... DIRECTIONAL (QTY 4)

APPROVAL BOX - PLEASE INITIAL

CUSTOMER APPROVAL	Date
-------------------	------

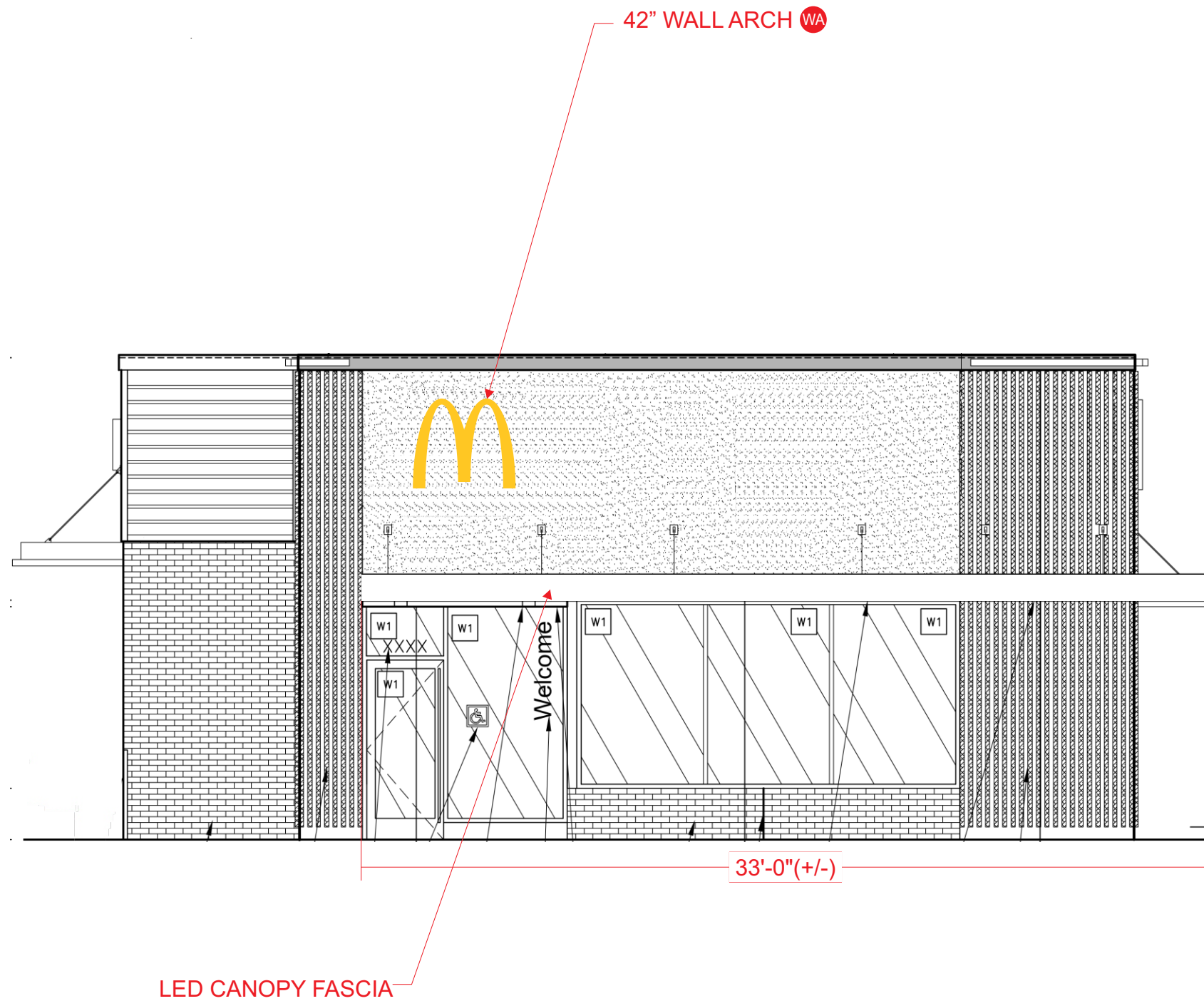
NOTE: Elevation drawings are for customer approval only, drawings are not to be used as any installation guide, all dimensions must be verified before installation.

Customer: MCDONALD'S	Date: 05/15/18	Prepared By: RM/PKE	Eng: -	<small>Note: Color output may not be exact when viewing or printing this drawing. All colors used are PMS or the closest CMYK equivalent. If these colors are incorrect, please provide the correct PMS match and a revision to this drawing will be made.</small>
Location: ALBUQUERQUE, NM	File Name: 155975 - R1 - 5900 MENAUL BLVD NE - ALBUQUERQUE, NM			

persóna
SIGNS | LIGHTING | IMAGE

DISTRIBUTED BY SIGN UP COMPANY
700 21st Street Southwest
PO Box 210
Watertown, SD 57201-0210
1.800.843.9888 • www.personasigns.com

FRONT (EAST) ELEVATION
 SCALE: 3/16" = 1'-0"



APPROVAL BOX - PLEASE INITIAL		
CUSTOMER APPROVAL		Date

NOTE: Elevation drawings are for customer approval only, drawings are not to be used as any installation guide, all dimensions must be verified before installation.

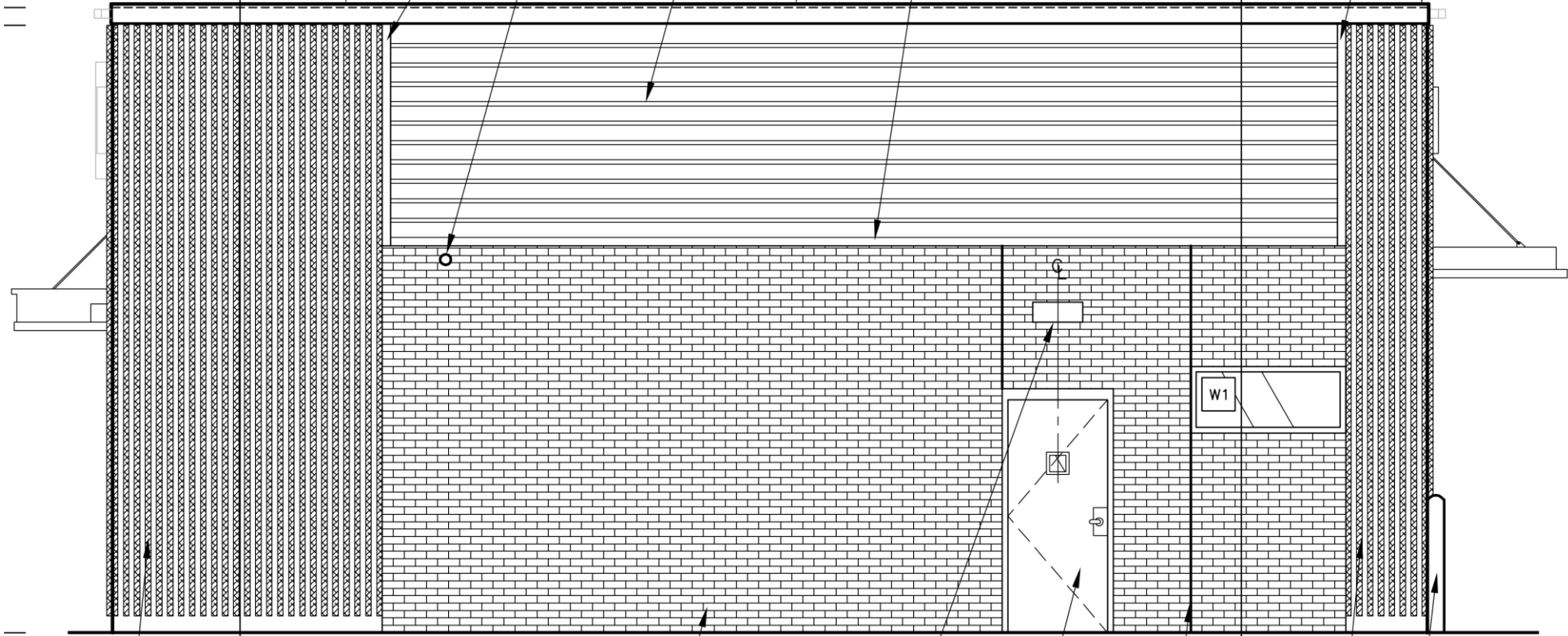
Customer: MCDONALD'S	Date: 05/15/18	Prepared By: RM/PKE	Eng: -	<small>Note: Color output may not be exact when viewing or printing this drawing. All colors used are PMS or the closest CMYK equivalent. If these colors are incorrect, please provide the correct PMS match and a revision to this drawing will be made.</small>
Location: ALBUQUERQUE, NM	File Name: 155975 - R1 - 5900 MENAUL BLVD NE - ALBUQUERQUE, NM			



DISTRIBUTED BY SIGN UP COMPANY
 700 21st Street Southwest
 PO Box 210
 Watertown, SD 57201-0210
 1.800.843.9888 • www.personasigns.com

REAR (WEST) ELEVATION

SCALE: 3/16" = 1'-0"



APPROVAL BOX - PLEASE INITIAL		
CUSTOMER APPROVAL		Date

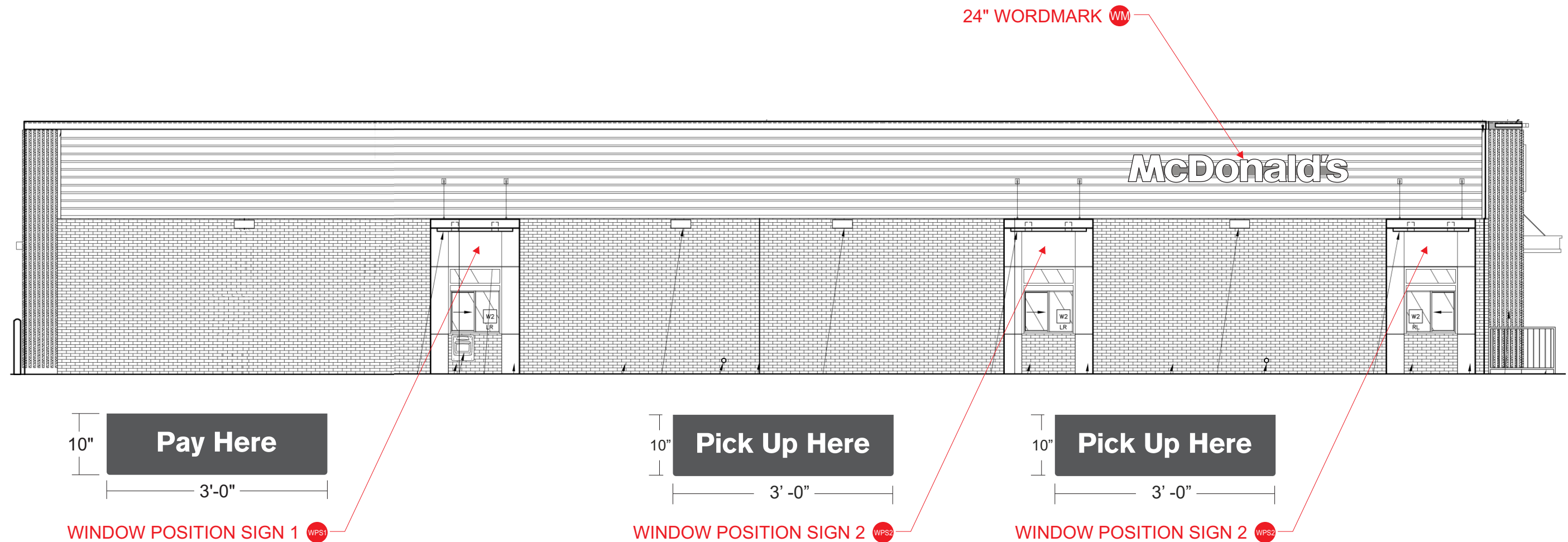
NOTE: Elevation drawings are for customer approval only, drawings are not to be used as any installation guide, all dimensions must be verified before installation.

Customer: MCDONALD'S	Date: 05/15/18	Prepared By: RM/PKE	Eng: -	<small>Note: Color output may not be exact when viewing or printing this drawing. All colors used are PMS or the closest CMYK equivalent. If these colors are incorrect, please provide the correct PMS match and a revision to this drawing will be made.</small>
Location: ALBUQUERQUE, NM	File Name: 155975 - R1 - 5900 MENAUL BLVD NE - ALBUQUERQUE, NM			



DISTRIBUTED BY SIGN UP COMPANY
 700 21st Street Southwest
 PO Box 210
 Watertown, SD 57201-0210
 1.800.843.9888 • www.personasigns.com

DRIVE-THRU (SOUTH) ELEVATION
 SCALE: 1/8" = 1'-0"



APPROVAL BOX - PLEASE INITIAL		
CUSTOMER APPROVAL		Date

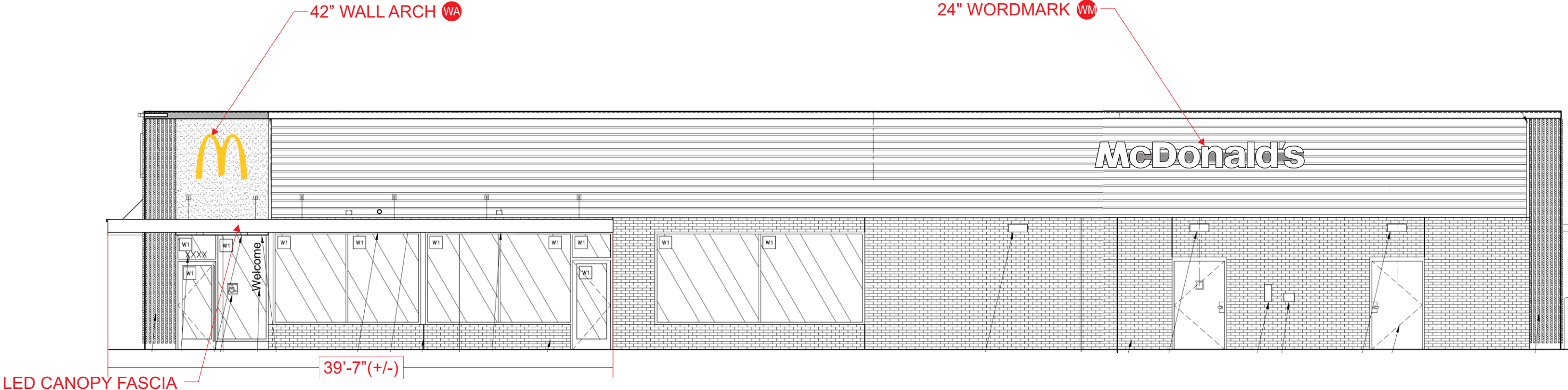
NOTE: Elevation drawings are for customer approval only, drawings are not to be used as any installation guide, all dimensions must be verified before installation.

Customer: MCDONALD'S	Date: 05/15/18	Prepared By: RM/PKE	Eng: -	<small>Note: Color output may not be exact when viewing or printing this drawing. All colors used are PMS or the closest CMYK equivalent. If these colors are incorrect, please provide the correct PMS match and a revision to this drawing will be made.</small>
Location: ALBUQUERQUE, NM	File Name: 155975 - R1 - 5900 MENAUL BLVD NE - ALBUQUERQUE, NM			



DISTRIBUTED BY SIGN UP COMPANY
 700 21st Street Southwest
 PO Box 210
 Watertown, SD 57201-0210
 1.800.843.9888 • www.personasigns.com

NON DRIVE-THRU (NORTH) ELEVATION
 SCALE: 1/8" = 1'-0"



APPROVAL BOX - PLEASE INITIAL		
CUSTOMER APPROVAL		Date

NOTE: Elevation drawings are for customer approval only, drawings are not to be used as any installation guide, all dimensions must be verified before installation.

Customer: MCDONALD'S	Date: 05/15/18	Prepared By: RM/PKE	Eng: -	<small>Note: Color output may not be exact when viewing or printing this drawing. All colors used are PMS or the closest CMYK equivalent. If these colors are incorrect, please provide the correct PMS match and a revision to this drawing will be made.</small>
Location: ALBUQUERQUE, NM	File Name: 155975 - R1 - 5900 MENAUL BLVD NE - ALBUQUERQUE, NM			

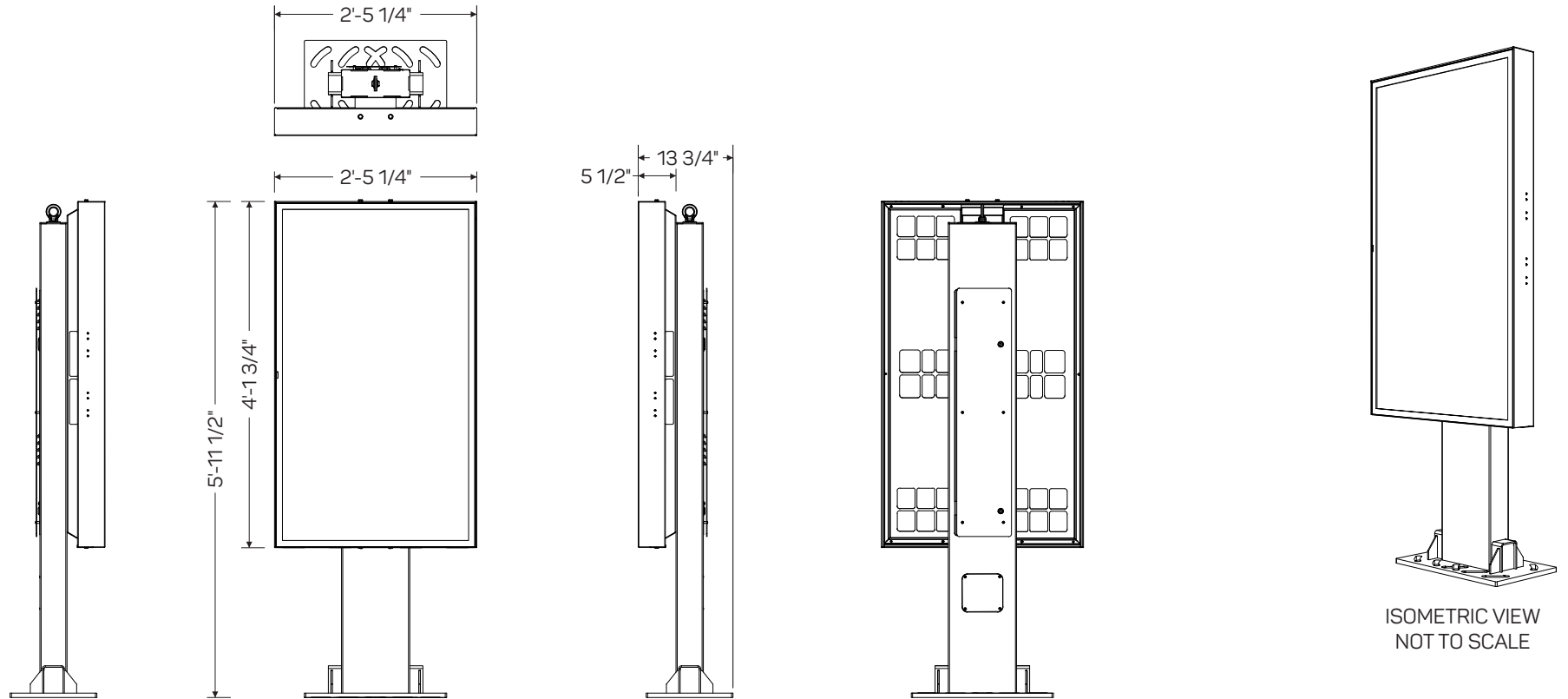



DISTRIBUTED BY SIGN UP COMPANY
 700 21st Street Southwest
 PO Box 210
 Watertown, SD 57201-0210
 1.800.843.9888 • www.personasigns.com

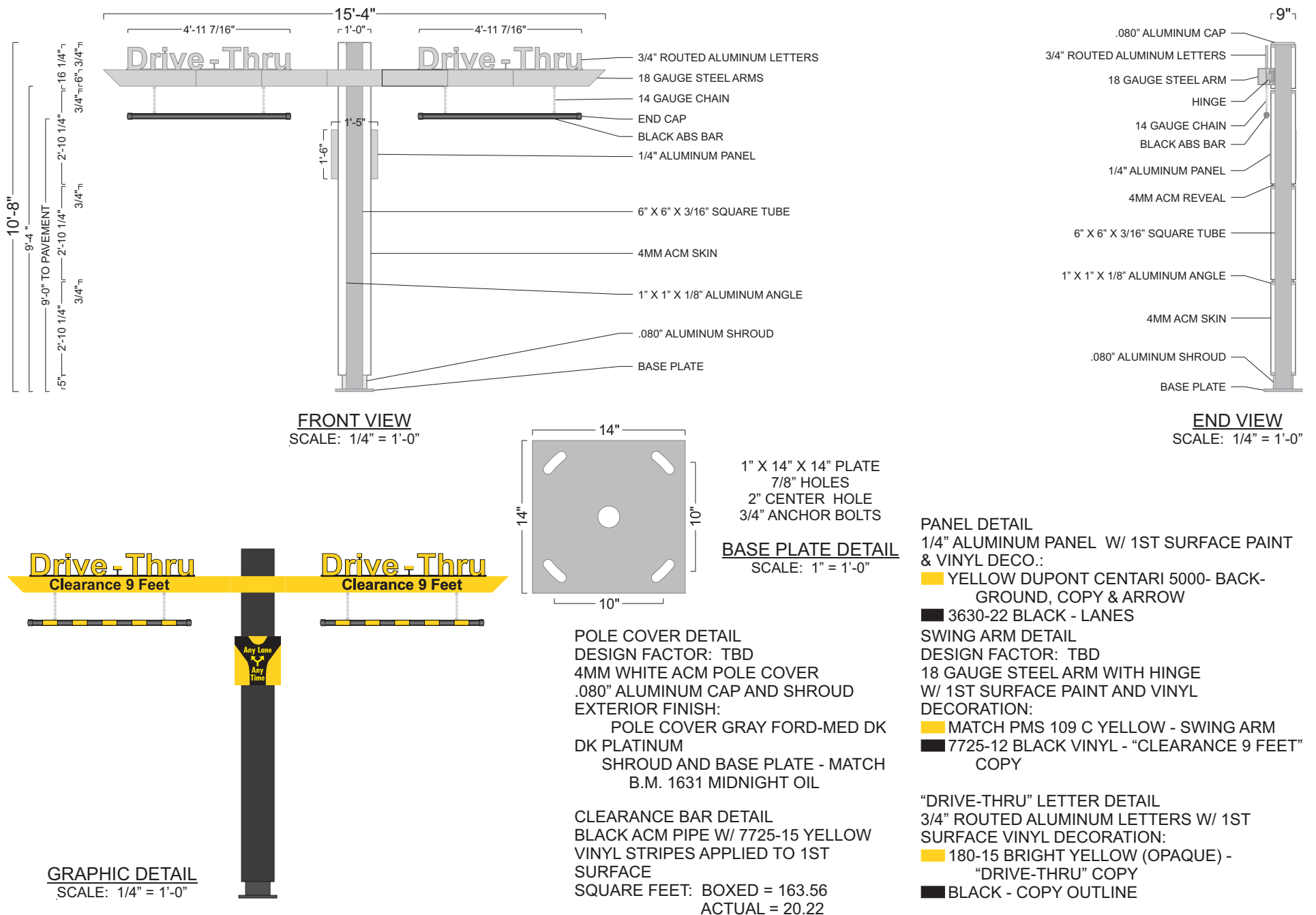
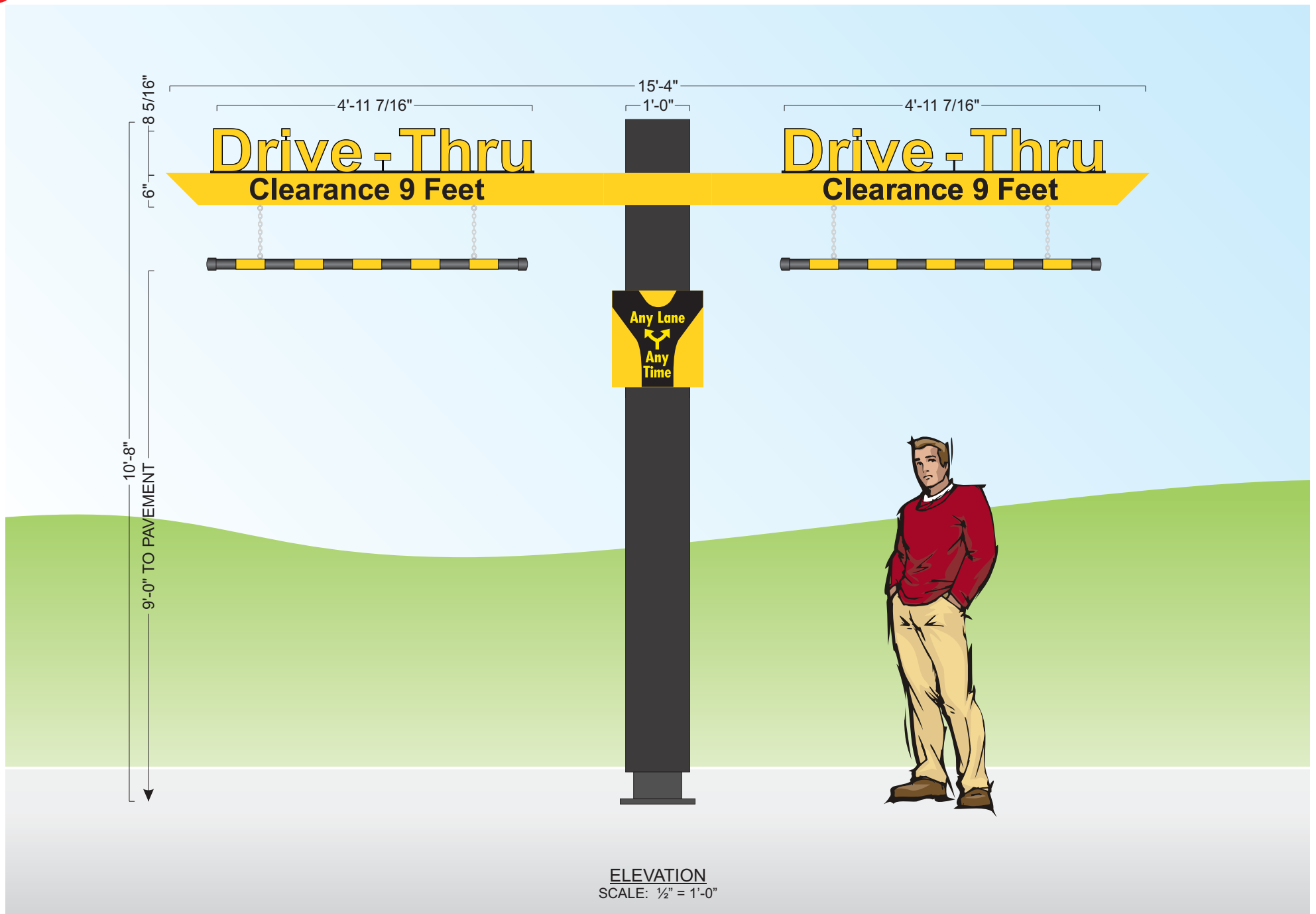
Frame	Hot dip galvanized + anti-graffiti powder coated steel
Brackets	Hot dip galvanized
Panels	Aluminium + anti-graffiti powdercoat
Access fasteners	Security Torx
Media player access	Dual camlock
Eyebolt	Stainless crane on
Baseplate	McDonalds spec triple mounting pattern option

ODMB 02 SINGLE

Displays	Samsung OH55F
Hardware	Stratocache Spectra NG
Heating/Cooling	Watlow 100W Heater Sunon 120mm AC Fan
Power Supply Units	60W DC Media Player Power Supply
Power Cables	1 x IEC Power Cable
Electrical Components	Isolated Ground 2 x IG Receptacles 20A Circuit Breaker
Communication Cables	2 x HDMI 1 x RS232
Certification	UL Certified

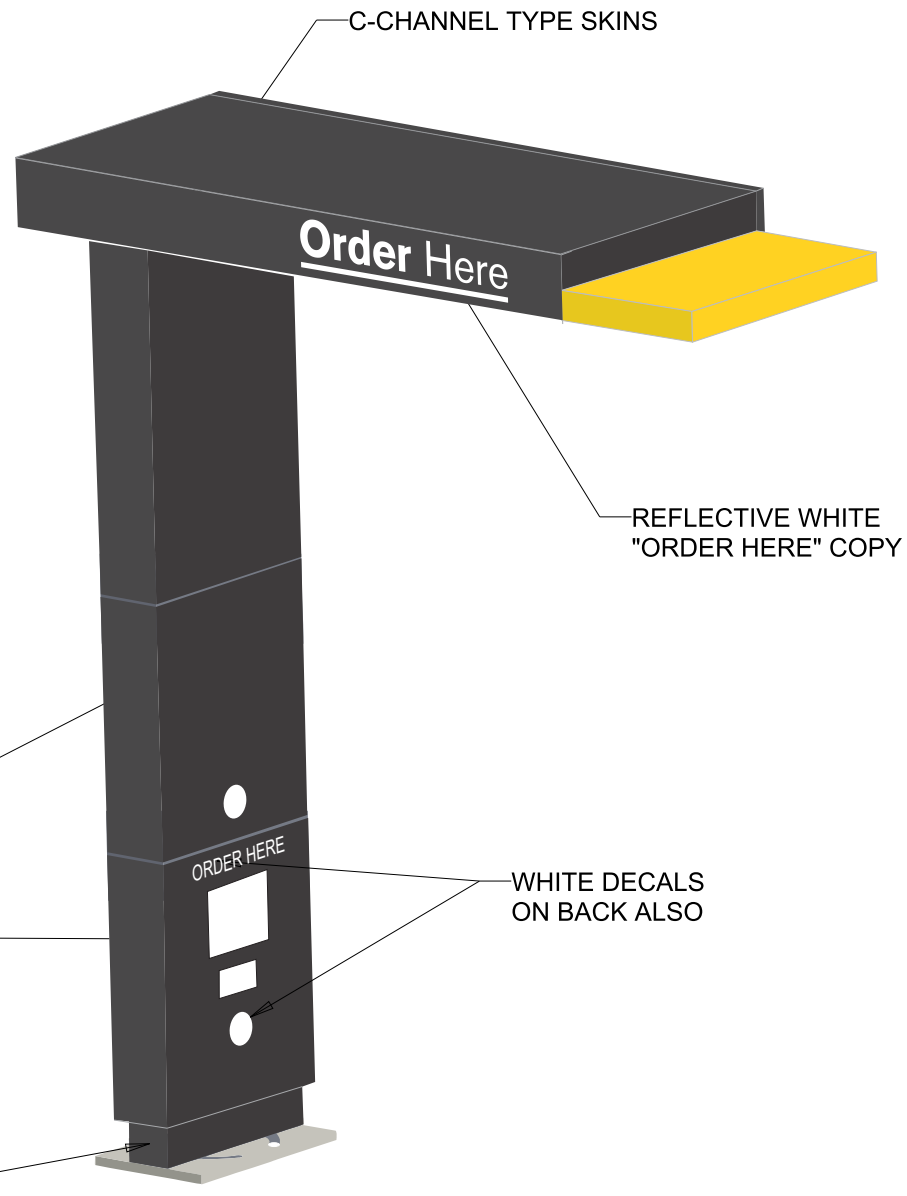


Customer: MCDONALD'S	Date: 05/15/18	Prepared By: RM/PKE	<small>Note: Color output may not be exact when viewing or printing this drawing. All colors used are PMS or the closest CMYK equivalent. If these colors are incorrect, please provide the correct PMS match and a revision to this drawing will be made.</small>	 <p>personna SIGNS LIGHTING IMAGE</p>	<p>DISTRIBUTED BY SIGN UP COMPANY 700 21st Street Southwest PO Box 210 Watertown, SD 57201-0210 1.800.843.9888 • www.personasigns.com</p>
Location: ALBUQUERQUE, NM	File Name: 155975 - R1 - 5900 MENAUL BLVD NE - ALBUQUERQUE, NM	Eng: -			



CANOPY DETAIL:
 STEEL TUBE CONSTRUCTION
 .080 ALUM SKINS
 EXTERIOR FINISH:
 SIDES TO MATCH ALPOIC CNC CHARCOAL
 TOP TO MATCH NG YELLOW
 U.L.

BASE DETAIL:
 STEEL TUBE CONSTRUCTION
 4MM ACM SKINS
 EXTERIOR FINISH:
 POLE COVER - MATCH ALPOIC CNC CHARCOAL
 BASE PLATE & SHROUD - MIDNIGHT OIL




ACM ALUM CLADDING

1/4" TURN SCREWS ON ALL BACKS OF PANELS

5 3/4" ALUM SHROUD

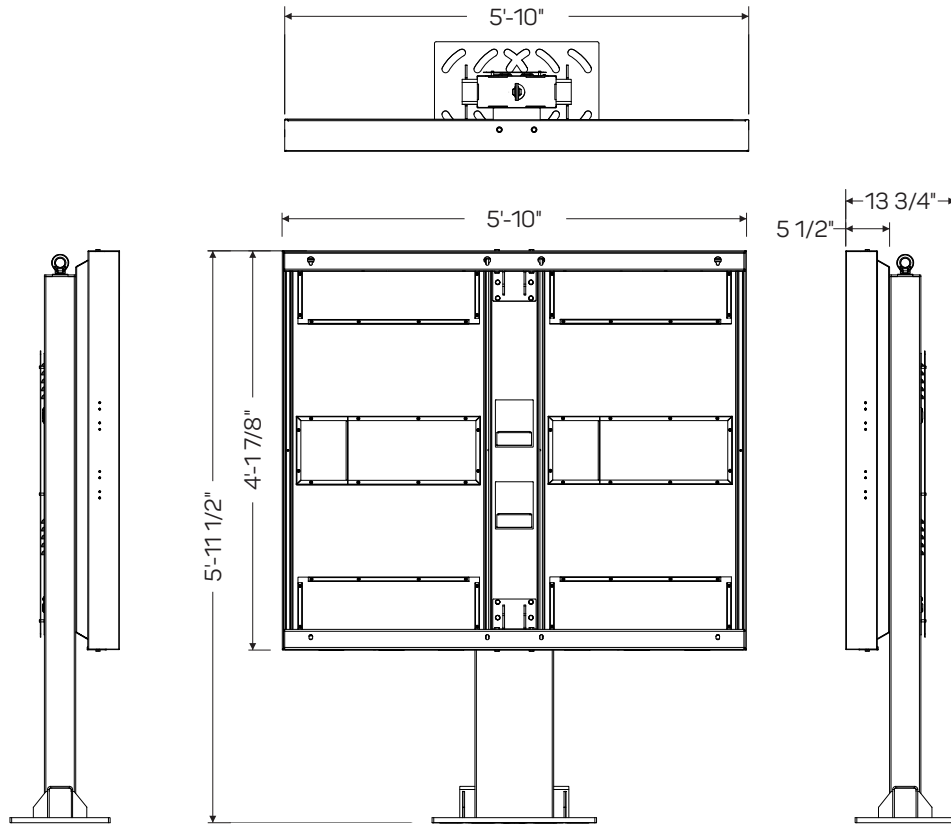
WHITE DECALS
ON BACK ALSO

Customer: MCDONALD'S	Date: 05/15/18	Prepared By: RM/PKE	<i>Note: Color output may not be exact when viewing or printing this drawing. All colors used are PMS or the closest CMYK equivalent. If these colors are incorrect, please provide the correct PMS match and a revision to this drawing will be made.</i>	 <p>personna SIGNS LIGHTING IMAGE</p>	DISTRIBUTED BY SIGN UP COMPANY 700 21st Street Southwest PO Box 210 Watertown, SD 57201-0210 1.800.843.9888 • www.personasigns.com
Location: ALBUQUERQUE, NM	File Name: 155975 - R1 - 5900 MENAUL BLVD NE - ALBUQUERQUE, NM	Eng: -			

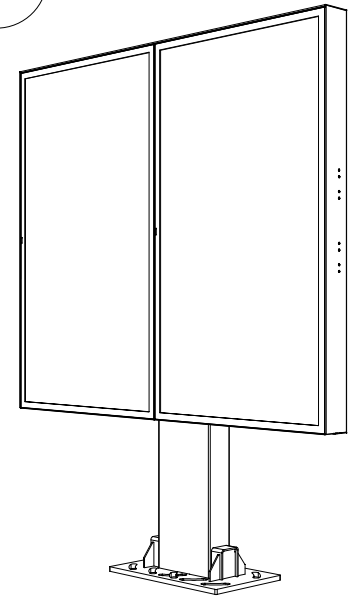
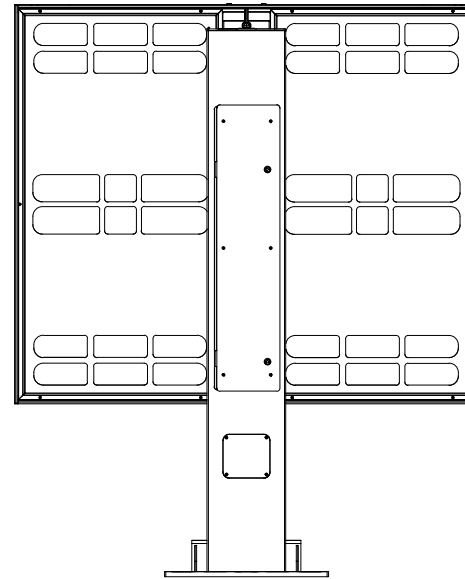
Frame	Hot dip galvanized + anti-graffiti powder coated steel
Brackets	Hot dip galvanized
Panels	Aluminium + anti-graffiti powdercoat
Access fasteners	Security Torx
Media player access	Dual camlock
Eyebolt	Stainless crane on
Baseplate	McDonalds spec triple mounting pattern option

ODMB 02 DOUBLE

Displays	2 x Samsung OH55F
Hardware	2 x Stratacache Spectra NG
Heating/Cooling	Watlow 100W Heater Sunon 120mm AC Fan
Power Supply Units	2 x 60W DC Media Player Power Supply
Power Cables	2 x IEC Power Cables
Electrical Components	Isolated Ground 2 x IG Receptacles 20A Circuit Breaker
Communication Cables	4 x HDMI 2 x RS232
Certification	UL Certified



SCALE: 1/2" = 1'-0"



ISOMETRIC VIEW
NOT TO SCALE

Customer:
MCDONALD'S

Date:
05/15/18

Prepared By:
RM/PKE

Note: Color output may not be exact when viewing or printing this drawing. All colors used are PMS or the closest CMYK equivalent. If these colors are incorrect, please provide the correct PMS match and a revision to this drawing will be made.

Location:
ALBUQUERQUE, NM

File Name:
155975 - R1 - 5900 MENAUL BLVD NE - ALBUQUERQUE, NM

Eng:
-

persona
SIGNS | LIGHTING | IMAGE

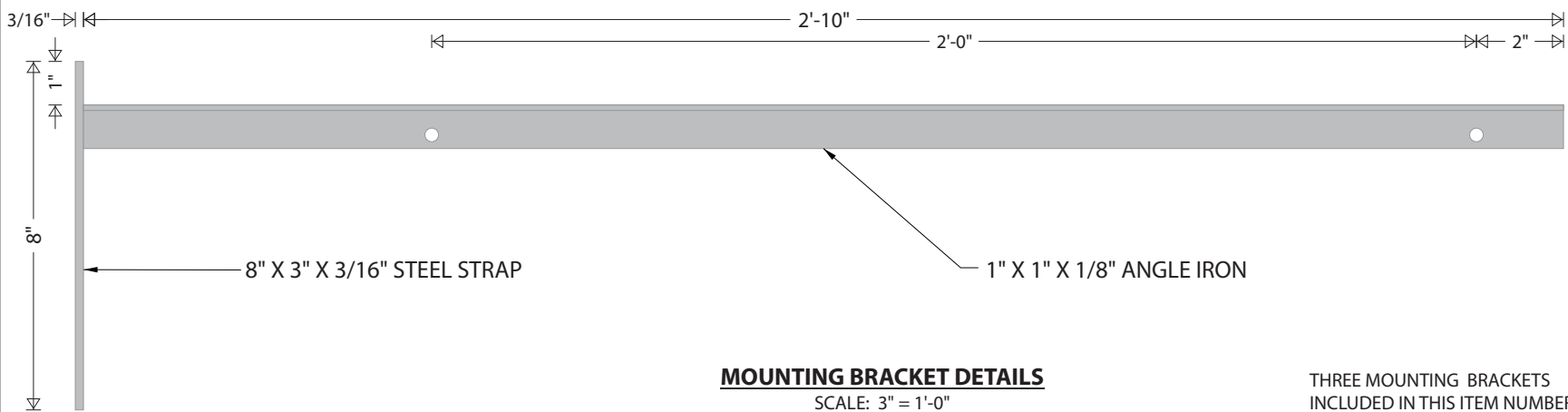
DISTRIBUTED BY SIGN UP COMPANY
700 21st Street Southwest
PO Box 210
Watertown, SD 57201-0210
1.800.843.9888 • www.personasigns.com



GRAPHIC DETAIL
SCALE: 1 1/2" = 1'-0"

"WELCOME" LETTER DETAILS
3/4" ALUMINUM LETTERS WITH 1ST SURFACE DECORATION:
 ■ 7725-120 SILVER - "WELCOME"
 COPY
 ■ BLACK POWDERCOAT - OUTLINE
 SQUARE FOOTAGE: BOXED = 2.54
 ACTUAL = 1.18

WPS1 WPS2 WPS3



MOUNTING BRACKET DETAILS
SCALE: 3" = 1'-0"

THREE MOUNTING BRACKETS INCLUDED IN THIS ITEM NUMBER

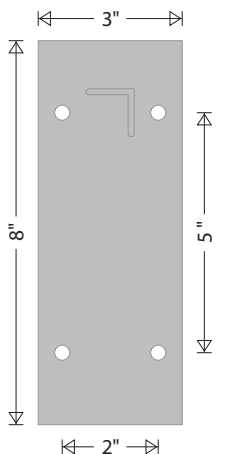
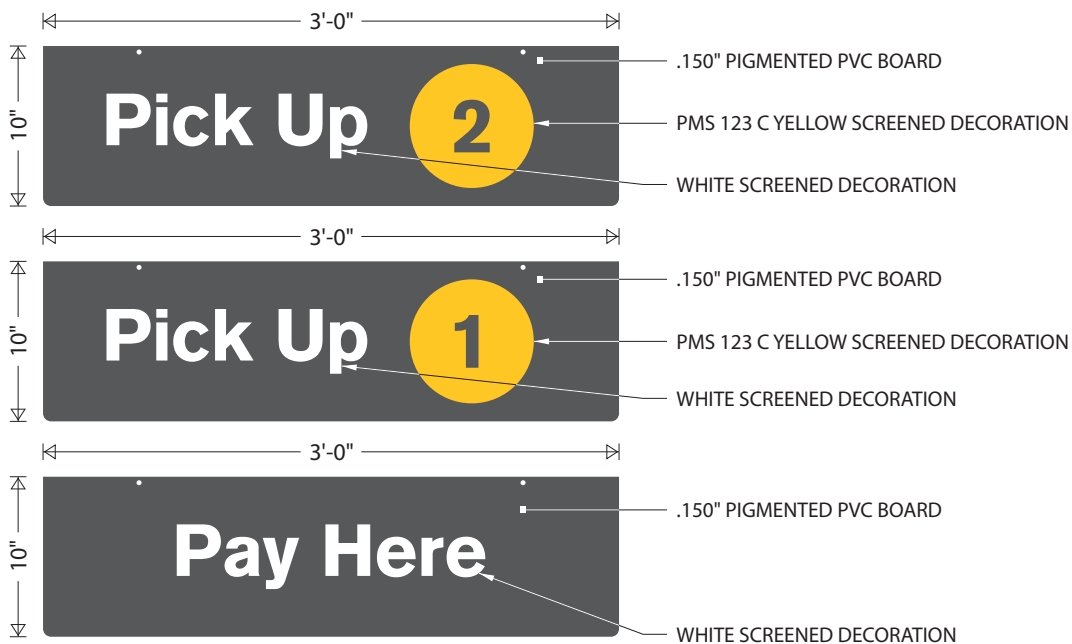


PLATE DETAILS
SCALE: 3" = 1'-0"



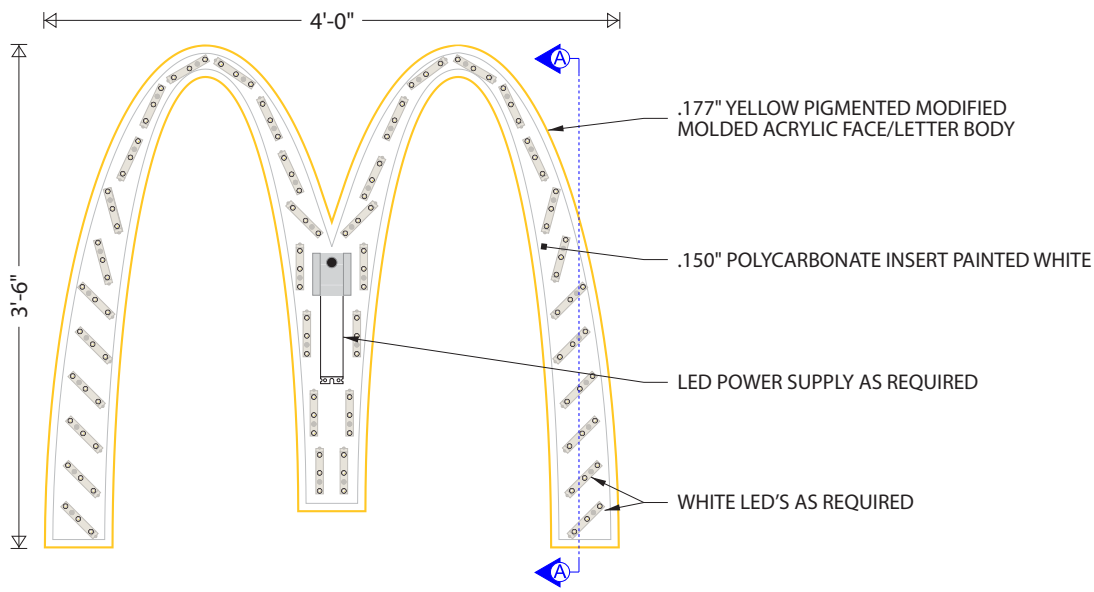
WINDOW POSITION SIGN DETAILS
SCALE: 1" = 1'-0"

BRACKET DETAILS

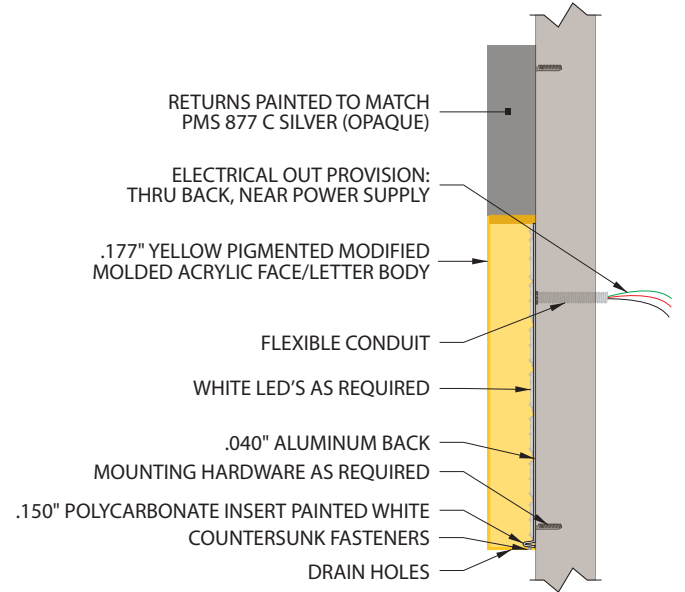
DESIGN FACTOR: TBD
 3/16" X 3" STEEL STRAP
 1" X 1" X 1/8" ANGLE IRON ARM
 EXTERIOR FINISH: PAINTED PMS 877 C SILVER
 5/16" HOLES PUNCHED IN ANGLE AND PLATE FOR MOUNTING

WINDOW POSITION SIGNS DETAIL

DESIGN FACTOR: TBD
 .150" PIGMENTED PVC BOARD TO MATCH GREY FORD - MED DK PLATINUM
 WHITE SCREENED COPY 1ST SURFACE
 PMS 123 C YELLOW - NUMERAL BACKGROUND
 2.50 SQUARE FEET
 * ALL THREE WINDOW POSITION SIGNS ARE INCLUDED IN THIS ITEM.



FRAME & LAMP DETAIL
SCALE: 3/4" = 1'-0"

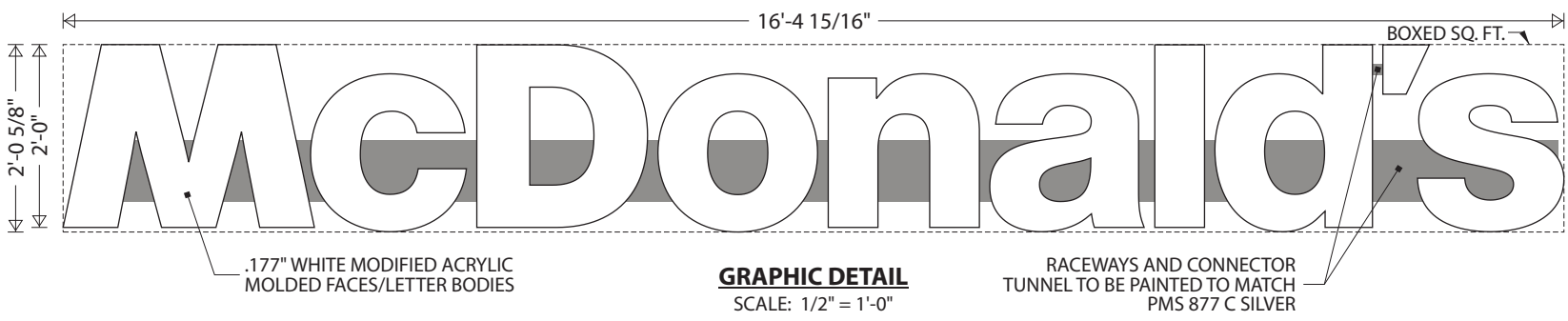


CROSS SECTION A-A
SCALE: 3/4" = 1'-0"



GRAPHIC DETAIL
SCALE: 3/4" = 1'-0"

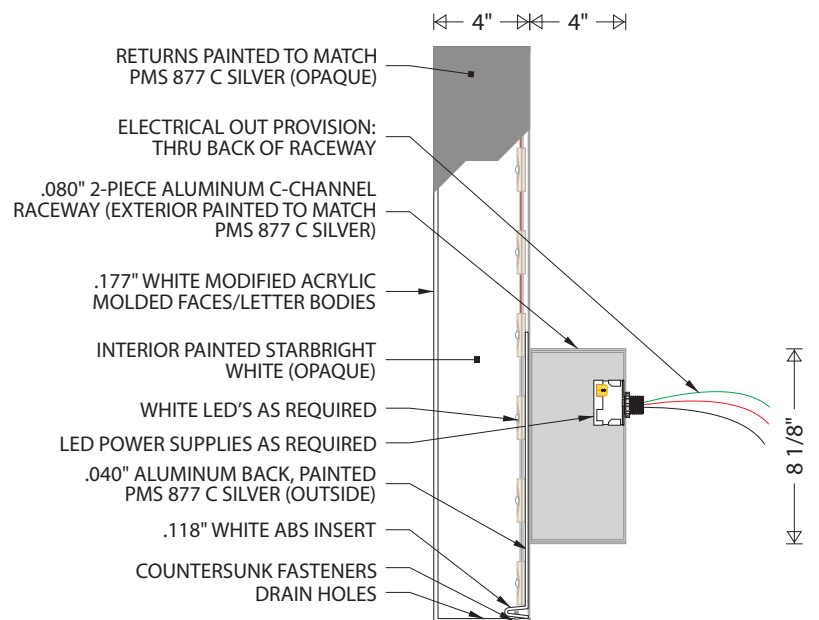
FRAME DETAIL:
DESIGN FACTOR: TBD
.177" FORMED YELLOW PIGMENTED (PMS 123 C) MODIFIED ACRYLIC FACE/LETTER BODY
EXTERIOR FINISH: PAINTED TO MATCH PMS 877 C SILVER (OPAQUE)
INTERIOR FINISH: PAINTED STARBRIGHT WHITE (OPAQUE)
.150" POLYCARBONATE INSERT PAINTED STAR-BRIGHTWHITE
.040" ALUMINUM BACK
LETTER BODY REMOVABLE FOR SERVICE ACCESS
U.L. APPROVED
ELECTRICAL: 0.85 AMPS, 120 VOLTS
SQUARE FOOTAGE:
BOXED = 14.00
ACTUAL = 4.90



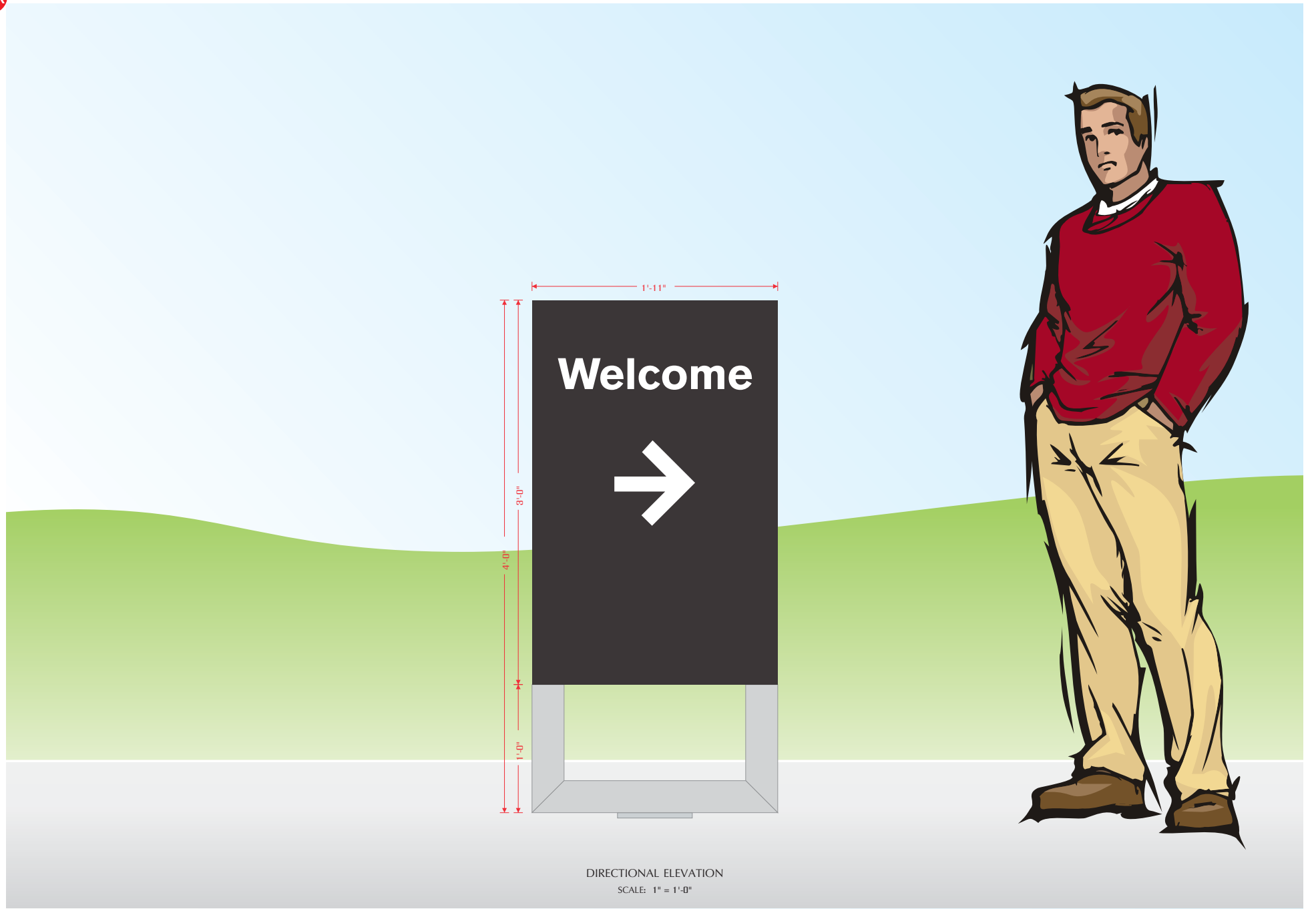
GRAPHIC DETAIL
SCALE: 1/2" = 1'-0"

RACEWAYS AND CONNECTOR TUNNEL TO BE PAINTED TO MATCH PMS 877 C SILVER

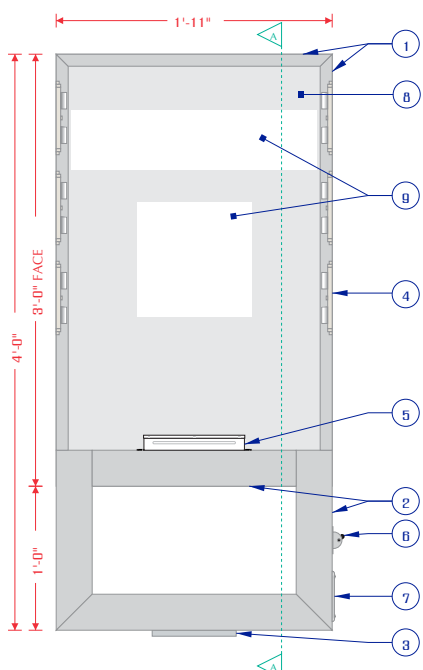
NOTES:
.177" MOLDED WHITE MODIFIED ACRYLIC LETTER BODIES INSTALLED ON ALUMINUM BACKS
.118" WHITE ABS INSERTS
EXTERIOR FINISH: MATCH PMS 877 C SILVER (OPAQUE); BACKS PAINTED PMS 877 C SILVER
INTERIOR FINISH: STAR-BRIGHT WHITE (OPAQUE)
LETTER BODIES REMOVABLE FOR SERVICE ACCESS
ACCESS PANEL BEHIND LETTER "n" FOR RACEWAY ACCESS
U.L. APPROVED
ELECTRICAL: 2.50 AMPS, 120 VOLTS
SQUARE FOOTAGE:
BOXED = 33.38
ACTUAL = 19.53



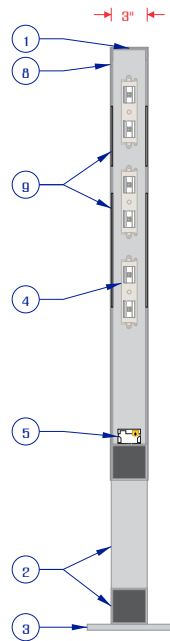
LETTER PROFILE
SCALE: 1 1/2" = 1'-0"



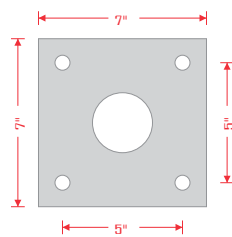
DIRECTIONAL ELEVATION
SCALE: 1" = 1'-0"



FRAME & LAMP DETAIL
SCALE: 3/4" = 1'-0"



CROSS SECTION A-A
SCALE: 3/4" = 1'-0"



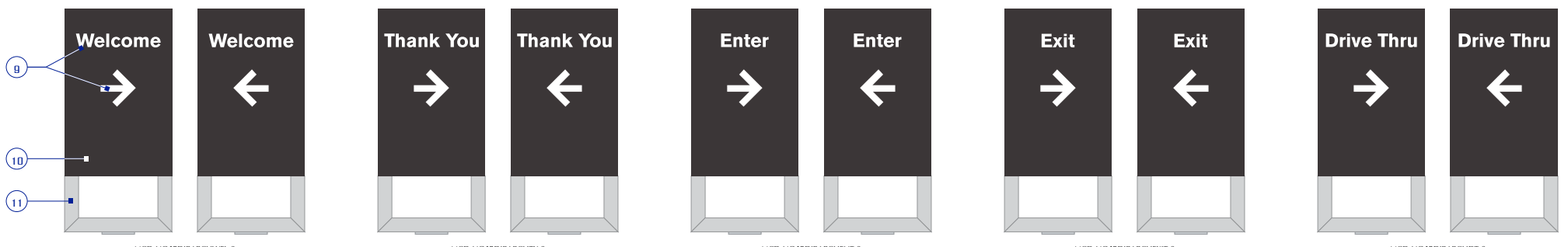
1/2" X 7" X 7" ALUMINUM PLATE
5/8" BOLT HOLES
2 1/2" CENTER HOLE

PLATE DETAIL
SCALE: 1 1/2" = 1'-0"

MCDONALD'S 48" NEXT GEN DIRECTIONAL SPECIFICATIONS	
NO.	PART/DESCRIPTION
1	3" X 1" X 1/8" ALUMINUM C-CHANNEL
2	3" X 3" X 1/8" ALUMINUM TUBE
3	MOUNTING PLATE (SEE PLATE DETAIL)
4	WHITE LED'S AS REQUIRED
5	LED POWER SUPPLIES AS REQUIRED
6	DISCONNECT SWITCH
7	ELECTRICAL CONNECTION ACCESS THROUGH COVER
8	.080" ROUTED ALUMINUM SHOEBOX FACES
9	.118" NG WHITE SOLAR GRADE POLYCARBONATE BACKER PANEL
10	POWDERCOAT HENTZEN #P90353APC (OR PAINT TO MATCH)
11	PAINT TO MATCH SILVER OR METALLIC GRAY

NOTES:

- DESIGN FACTOR: TO BE DETERMINED
- 3" X 1/8" ALUMINUM C-CHANNEL FRAME
- ROUTED ALUMINUM SHOTBOX FACES
- EXTERIOR FINISH:
FACES - POWDERCOAT HENTZEN #P90353APC (OR PAINT TO MATCH)
TUBES AND PLATE - PAINT SILVER OR METALLIC GRAY
- INTERIOR FINISH: PAINT REFLECTIVE WHITE
- FACES REMOVABLE FOR SERVICE ACCESS
- U.L. LISTED
- ELECTRICAL: AMPS TBD/120 VOLTS
- SQUARE FOOTAGE:
FACE = 5.75
DISPLAY = 7.87



GRAPHIC DETAIL
SCALE: 3/8" = 1'-0"