

**DEVELOPER**  
 WHATABRANDS REAL ESTATE  
 CONTACT: CINDY ESPINOZA  
 300 CONCORD PLAZA DRIVE  
 SAN ANTONIO, TX 78216  
 ATTN: CINDY ESPINOZA  
 PHONE: 210-476-6180  
 EMAIL: CESPINOZA@WBHQ.COM

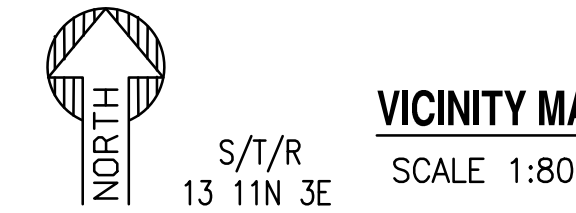
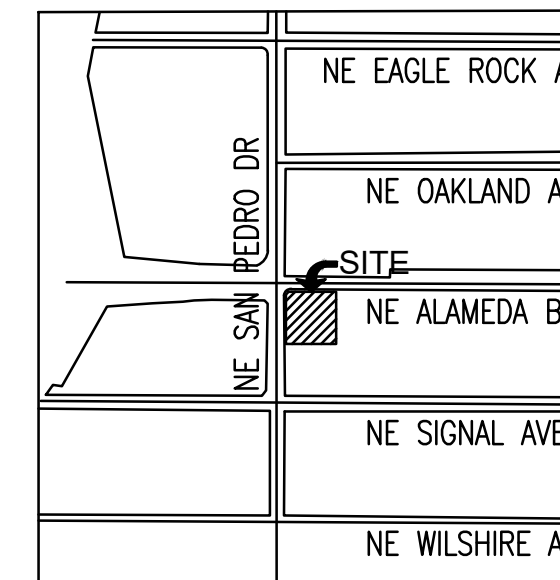
**CIVIL ENGINEER**  
 SUSTAINABILITY ENGINEERING GROUP  
 8280 E. GELDING DR, SUITE 101  
 SCOTTSDALE, ARIZONA 85260  
 PHONE: 480-237-2507  
 ATTN: ALI FAKIH

**OWNER**  
 GREEN JEANS WEST, LLC  
 2929 MONTE VISTA NE  
 ALBUQUERQUE, NM 87106

# WHATABURGER

## PRELIMINARY UTILITY PLAN

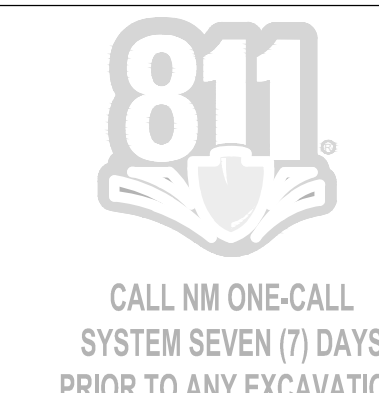
6100 NE ALAMEDA BLVD, ALBUQUERQUE, NM  
 A PORTION OF SECTION 13, TOWNSHIP 11 NORTH, RANGE 3  
 EAST, BERNALILLO COUNTY, NEW MEXICO.



NOT FOR  
CONSTRUCTION

SUSTAINABILITY  
ENGINEERING  
GROUP

SEG



PROJECT: WHATABURGER NM SEC ALAMEDA BLVD NE & SAN PEDRO AVE NE  
 LOCATION: 6100 ALAMEDA BLVD NE ALBUQUERQUE, NM

DRAWN: GA 12/08/2021  
 DESIGNED: LP 01/12/2022  
 QC: SC 01/18/2022  
 FINAL QC:  
 PROJ. MGR.: AF 01/21/2022

DATE: 01/21/2022  
 ISSUED FOR: DRB

REVISION NO.: DATE:


JOB NO.: 210907

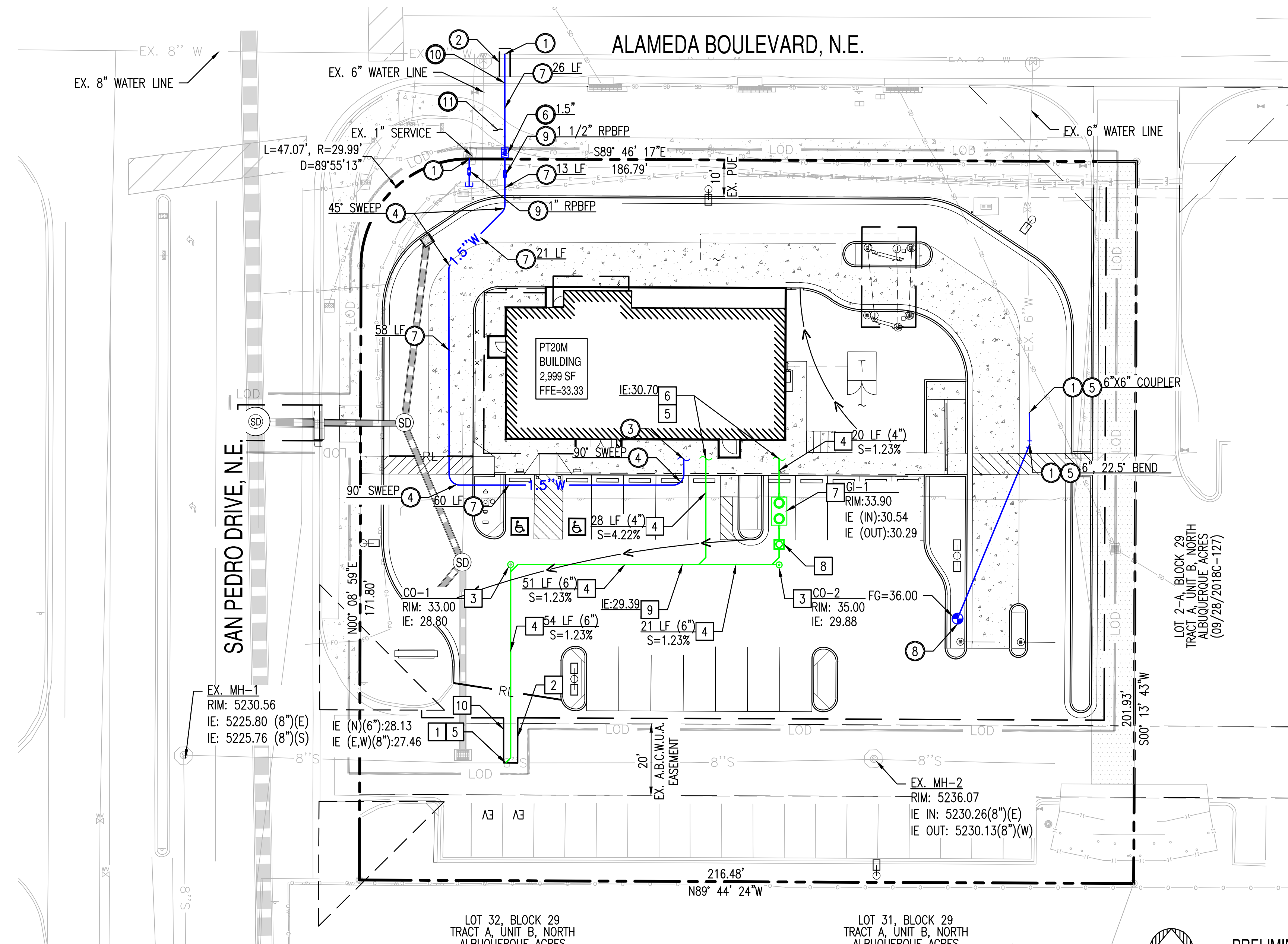
SHEET TITLE:

**PRELIMINARY UTILITY PLAN**

PAGE NO.: 1 OF 1

SHEET NO.: C4.00

THIS DRAWING IS AN INSTRUMENT OF SERVICE AND THE PROPERTY OF SUSTAINABILITY ENGINEERING GROUP, AND SHALL REMAIN THEIR PROPERTY. THE USE OF THIS DRAWING SHALL BE RESTRICTED TO THE ORIGINAL SITE FOR WHICH IT IS PREPARED AND PUBLICATION THEREOF IS EXPRESSLY LIMITED TO SUCH USE.



### PRELIMINARY WATER CONSTRUCTION KEY NOTES

- CONTRACTOR TO VERIFY SIZE AND LOCATION OF EXISTING WATER LINE PRIOR TO CONSTRUCTION.
- SAWCUT, REMOVE AND REPLACE EXISTING PAVEMENT.
- DOMESTIC CONNECTION TO BUILDING, REFER MEP PLAN FOR CONTINUATION.
- TYPE "K" COPPER SWEEP, SIZE TO MATCH WATER LINE.
- FITTING, SIZE & ANGLE PER PLAN.
- WATER METER, SIZE PER PLAN.
- TYPE "K" 1 1/2" COPPER DOMESTIC SERVICE CONNECTION, LENGTH PER PLAN.
- RELOCATED FIRE HYDRANT.
- BACKFLOW PREVENTION, SIZE PER PLAN.
- REMOVE AND REPLACE EXISTING VERTICAL CURB AND GUTTER.
- REMOVE AND REPLACE EXISTING SIDEWALK.

### PRELIMINARY SEWER CONSTRUCTION KEY NOTES

- CONTRACTOR SHALL VERIFY THE LOCATION OF THE EXISTING SANITARY SEWER LINE BEFORE PROCEEDING WITH TRENCHING. CONTRACTOR SHALL CONTACT ENGINEER IF EXISTING SEWER ELEVATION IS HIGHER THAN PROPOSED TIE-IN INVERT PRIOR TO ANY CONSTRUCTION ACTIVITY.
- CONTRACTOR SHALL VERIFY ALL INVERTS AND CLEARANCE OF CROSSING UTILITIES PRIOR TO COMMENCING CONSTRUCTION.
- SEWER CLEAN-OUT PER MAG STD. DET. 441.
- PVC SDR-35 SEWER LINE. S= 2.00% MINIMUM. SIZE, LENGTH AND SLOPE PER PLAN. MAINTAIN 4' MINIMUM COVER.
- REFER TO MEP PLANS FOR CONTINUATION.
- PLUG AND MARKER FOR SEWER STUB PER MAG STD. DET. 427.
- GREASE INTERCEPTOR. PER BUILDING PLUMBING PLANS.
- SAMPLE WELL.
- WYE. MATCH SIZE WITH PLAN.
- SAWCUT, REMOVE AND REPLACE EXISTING PAVEMENT.

### PROPOSED UTILITY LEGEND:

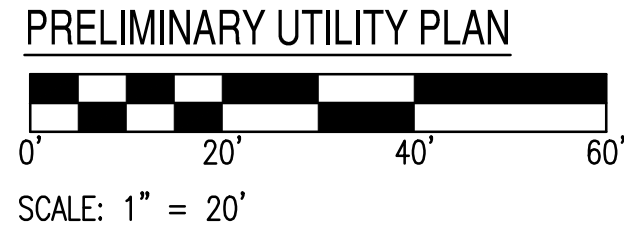
---	PROPERTY LINE	⊕	FIRE HYDRANT	—	CAP
- - -	EASEMENT LINE	⊕	FDC	—	BUILDING CONNECTION
— 8" W —	WATER LINE	⊕	WATER METER	⊕	SEWER CLEAN OUT
— 8" S —	SEWER LINE	⊕	BACK FLOW PREVENTER		

### EXISTING LEGEND:

---	CENTERLINE	— EX. S —	SEWER LINE	---	STORM DRAIN LINE	⊕	SIGN
- - -	EASEMENT LINE AS NOTED	⊕	SEWER MANHOLE	---	STORM CATCH BASIN	⊕	STREET LIGHT
—	CHAINLINK FENCE	— EX. W —	WATER LINE	⊕	STORM MANHOLE	⊕	FIBER OPTIC LINE
⊕	TREE	⊕	WATER VALVE	---	GAS LINE	---	
		⊕	FIRE HYDRANT	---	IRRIGATION LINE		

MONUMENT "10\_C18"  
 STANDAR C.O.A. ALUMINUM DISC  
 (FOUND IN PLACE)  
 NEW MEXICO STATE PLANE COORDINATES  
 (CENTRAL ZONE-N.A.D. 1983)  
 N=1,524,123.885 US SURVEY FEET  
 E= 1,542,565.263 US SURVEY FEET  
 PUBLISHED EL=5222.09 US SURVEY FEET  
 (NAVD 1988)  
 GROUND TO GRID FACTOR=0.999665042  
 DELTA ALPHA ANGLE=-0°11'19.42"

A.G.R.S. MONUMENT "9\_C18"  
 STANDAR C.O.A. ALUMINUM DISC  
 (FOUND IN PLACE)  
 NEW MEXICO STATE PLANE COORDINATES  
 (CENTRAL ZONE-N.A.D. 1983)  
 N=1,521,497.624 US SURVEY FEET  
 E= 1,542,501.428 US SURVEY FEET  
 PUBLISHED EL=5232.47 US SURVEY FEET  
 (NAVD 1988)  
 GROUND TO GRID FACTOR=0.999664563  
 DELTA ALPHA ANGLE=-0°11'19.69"



LOCATION: Z:\SHARED\PROJECTS\WHATABURGER\ALBUQUERQUE, NM - SWC ALAMEDA BLVD & SAN PEDRO AVE - 210907\11 CAD (SEG)\11.4 CD\S\210907-CA.00 (PRELIMINARY).DWG SAVED BY: PAOLA GONZALEZ DATE: 1/21/2022