

ADMINISTRATIVE AMENDMENT

FILE # _____ PROJECT # _____

APPROVED BY

DATE



WVA CUSTOMER SERVICE AND OPERATION FACILITIES ENTRANCE

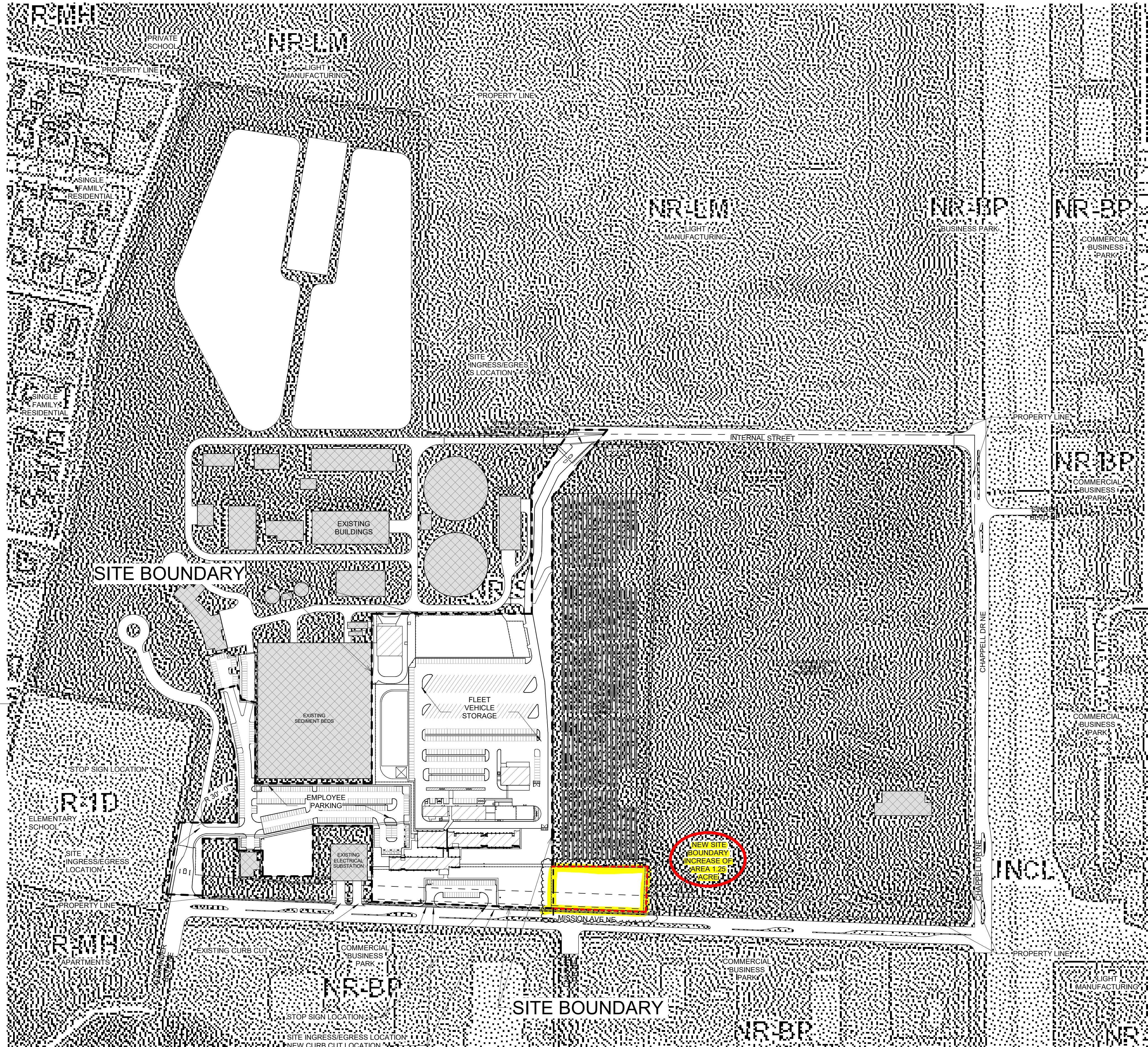


RENDERING OF SOLAR ARRAY OVER FLEET STORAGE AND EMPLOYEE PARKING

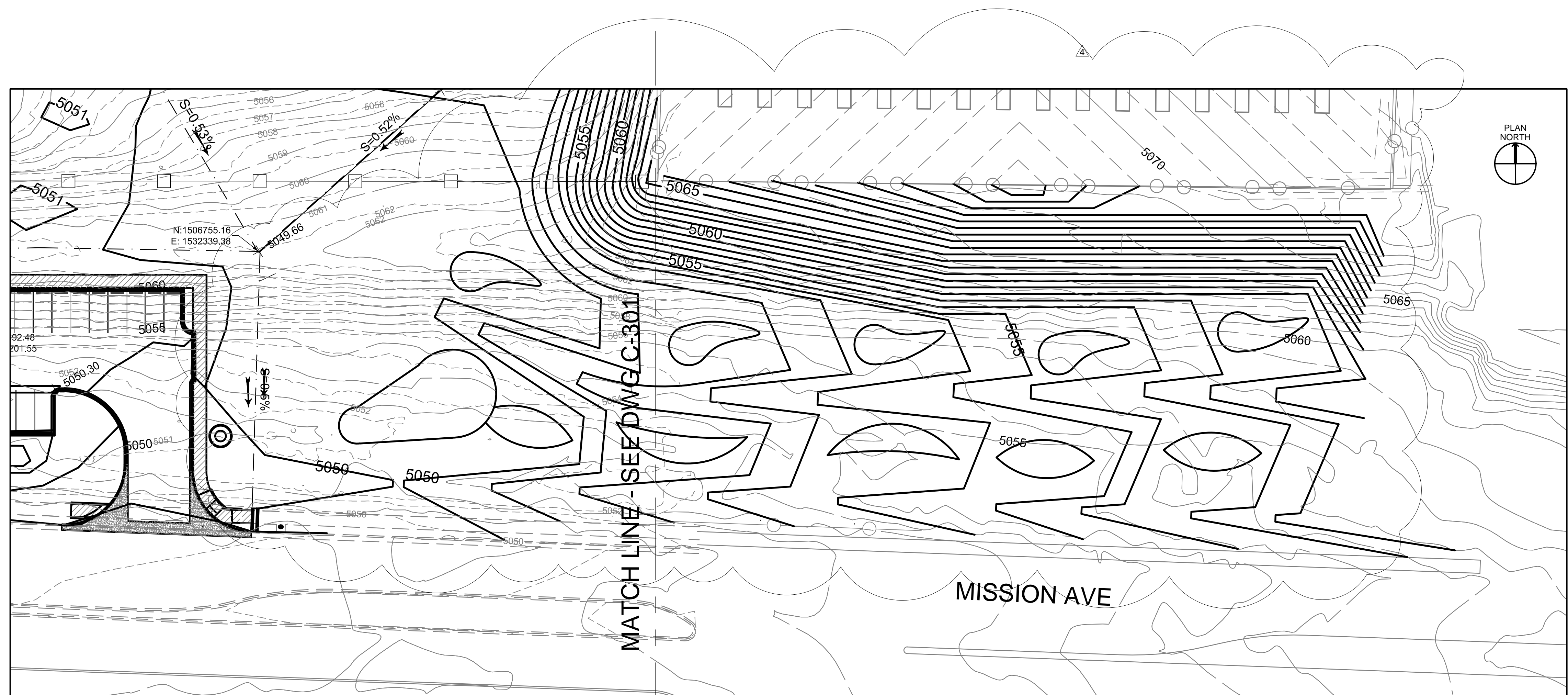
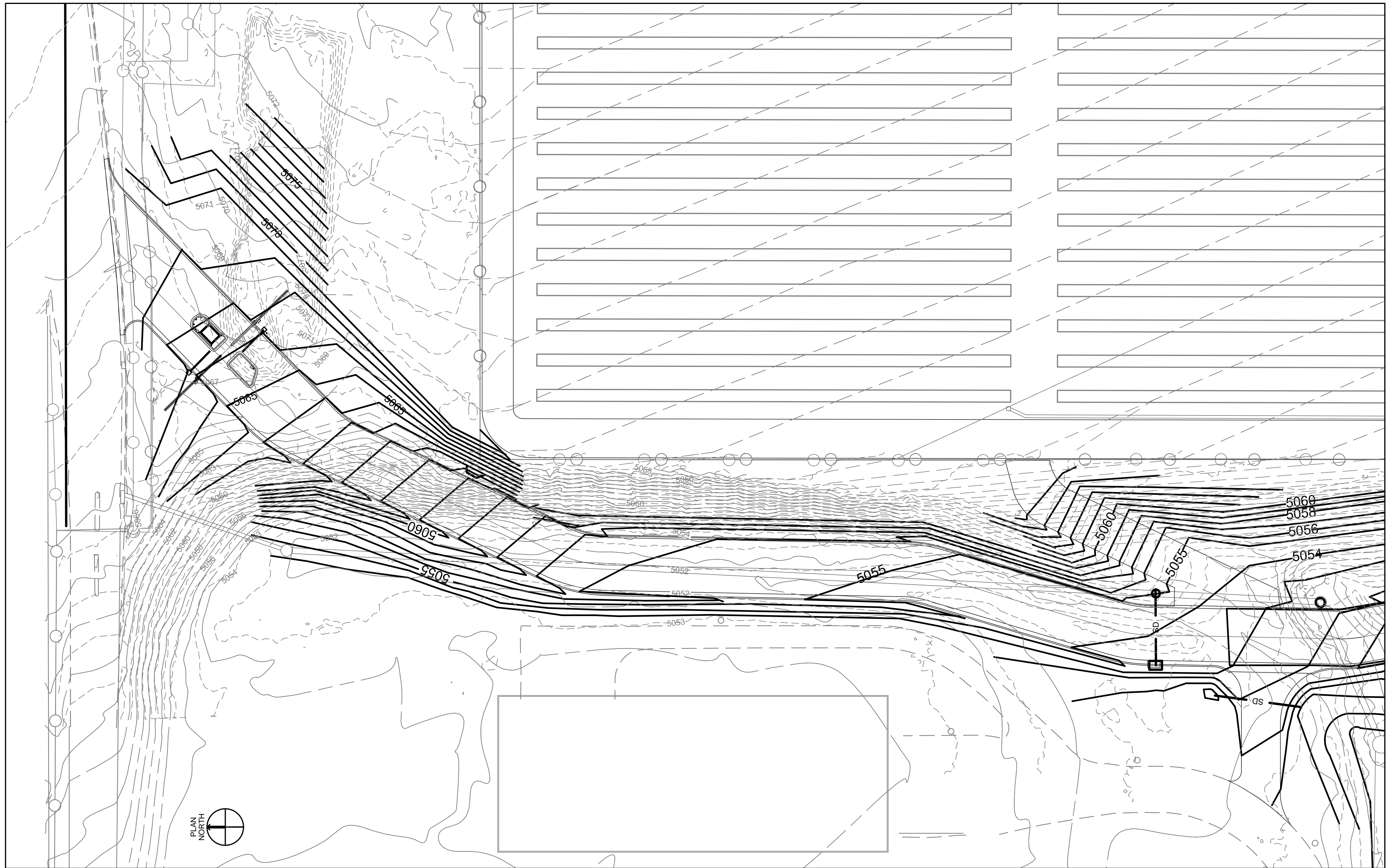


SOLAR PV ARRAY

A planned solar PV array system form a shade canopy over the entire parking areas of both the employee parking and fleet storage lots. The design has not been completed (an RFP is in process); therefore the system is not yet incorporated into these drawings. The collectors will be mounted on a structural support approximately 14' high, and will continuously cover parking and storage areas, drainage medians and islands, and vehicle aisles. Images above of an existing system are similar to what is planned for this facility.



DWG: C:\Users\Scott.Medina\Documents\WABOMA - Operations\CAD\Sheet\60543134-C-304R4.dwg
 USER: Scott.Medina
 DATE: Jun 10, 2020 11:39am
 PLOT: 60543134-C-304R4 - rev 002
 PLOTSCALE: 1/8"=1'-0"
 PLOTUNIT: Feet
 PLOTORIENT: Landscape
 PLOTSCALE: 1/8"=1'-0"
 PLOTUNIT: Feet
 PLOTORIENT: Landscape
 PLOTSCALE: 1/8"=1'-0"
 PLOTUNIT: Feet
 PLOTORIENT: Landscape



LEGEND

- 5050 - - - EXISTING GRADE CONTOUR
- = = = EXISTING STORM DRAIN
- 5050 - - - NEW GRADE CONTOUR
- + 5050 NEW GRADE SPOT ELEVATION
- - - LIMITS OF GRADING
- - - SD - - - NEW STORM DRAIN PIPE
- NEW RIP RAP SLOPE PROTECTION
- NEW STORM INLET

KEY NOTES

SMPC Architects
ARCHITECTS OF MEXICO

115 Avenida Drive SE
 Albuquerque, New Mexico
 87108
 T 505.255.8888
 F 505.268.8888
 www.smpcarchitects.com

\\smpc\shared\p\m\medina_s\60543134_C-304R4.dwg
 One Park Square, 6501 Americas Pkwy, NE,
 Suite 300, Albuquerque, New Mexico 87110
 (505)-855-7500

WUA CUSTOMER SERVICE AND OPERATIONS FACILITIES

6100 ALEXANDER BLVD
ALBUQUERQUE, NM

NO.	DATE	DESCRIPTION
4	2020-6-8	MISSION AVE
3	2019-4-01	N. ENTRANCE
2	2019-10-14	ADD GRADING
1	2019-04-11	ADDENDUM 3

DATE: 5/15/19
 PROJECT #: 18018
 DRAWN BY: DRW
 CHD BY: CR

Copyright:
 SMPC Architects © 2016
 These documents were prepared for this specific project only. SMPC Architects' liability is limited to this specific project, and does not extend to reuse of these documents for other projects.



Scale 1" = 30'

ENLARGED
 GRADING
 PLAN

C-304R4
 SHEET OF

PLANT LEGEND – QUANTITIES SHOWN FOR THIS SHEET ONLY

KEY	COMMON NAME	BOTANICAL NAME	QTY	INSTALLED SIZE	REMARKS	MATURE SIZE
TREES						
AP	AUSTRIAN PINE	PINUS NIGRA	2	6'-8" HT.	B&B	40' HT. X 30' SPD.
CT	CHASTE TREE	VITEX AGNUS-CASTUS	14	4'-6" HT.	15 GA. MULTI	20' HT. X 20' SPD.
CP	CHINESE PISTACHE	PISTACHIA CHINENSIS	10	2" CAL., 10'-12' HT.	24" BOX	30' HT. X 30' SPD.
DW	DESERT WILLOW	CHILOPSIS LINEARIS	51	6'-8" HT.	24" BOX	20' HT. X 20' SPD.
EL	ESCAPMENT LIVE OAK	QUERCUS FUSIFORMIS	19	4'-6" HT.	24" BOX	20' HT. X 20' SPD.
EK	ESPRESSO KENTUCKY COFFEE	GYMNOCLADUS DIOICUS 'ESPRESSO'	9	2" CAL., 10'-12' HT.	24" BOX	50' HT. X 35' SPD.
GO	GAMBEL OAK	QUERCUS GAMBELII	4	2" CAL., 10'-12' HT.	24" BOX	25' HT. X 25' SPD.
GW	GOODINGS WILLOW	SALIX GOODINGII	2	2" CAL., 10'-12' HT.	24" BOX	25' HT. X 25' SPD.
HM	HONEY MESQUITE	PROSOPIS GLANDULOSA	11	2" CAL., 10'-12' HT.	24" BOX	25' HT. X 30' SPD.
LE	LACEBARK ELM	ULMUS PARVIFOLIA	17	2" CAL., 10'-12' HT.	24" BOX	40' HT. X 35' SPD.
MR	MEXICAN REDBUD	CERCIS MEXICANA	4	2" CAL., 10'-12' HT.	24" BOX	20' HT. X 15' SPD.
NH	NETLEAF HACKBERRY	CELTIS LAEVIGATA RETICULATA	11	2" CAL., 10'-12' HT.	24" BOX	25' HT. X 25' SPD.
NM	NEW MEXICO OLIVE	FORESTIERA NEOMEXICANA	41	4'-6" HT.	15 GA. MULTI	15' HT. X 12' SPD.
OS	ONE SEED JUNIPER	JUNIPERUS MONOSPERMA	9	6'-8" HT.	24" BOX	15' HT. X 20' SPD.
PP	PRAIRIE FLAMELEAF SUMAC	RHUS LANCEOLATA	6	6'-8" HT.	24" BOX	15' HT. X 20' SPD.
PF	PINON PINE	PINUS EDULIS	7	6'-8" HT.	24" BOX	25' HT. X 20' SPD.
SM	SCREWBEE MESQUITE	PROSOPIS PUBESCENS	11	4'-6" HT.	15 GA. MULTI	20' HT. X 20' SPD.
SHRUBS/GROUNDCOVERS/GRASSES/PERENNIALS						
AL	APACHE PLUME	FALLUGIA PARADOXA	27	MIN. 18" HT.	5 GALLON	5' HT. X 5' SPD.
AD	ANGELITA DAISY	HYMENOXYS ACUALIS	35	MIN. 18" HT.	5 GALLON	1' HT. X 1' SPD.
AR	ARIZONA ROSEWOOD	VAUQUELINIA CALIFORNICA	5	MIN. 48" HT.	5 GALLON	15' HT. X 10' SPD.
AS	ALKALI SACATON	SPOROBOLUS AIROIDES	34	MIN. 18" HT.	5 GALLON	2' HT. X 2' SPD.
BB	BIG BLUESTEM	ANDROPOGON GERARDII	12	MIN. 18" HT.	5 GALLON	4' HT. X 2' SPD.
BF	BLANKETFLOWER	GALLARDIA ARISTATA	13	MIN. 18" HT.	1 GALLON	1' HT. X 1' SPD.
BG	BEAR GRASS	NOLINA TEXANA	20	MIN. 12" HT.	5 GALLON	4' HT. X 5' SPD.
BS	BIG SAGE	ARTEMISIA TRIDENTATA	22	MIN 18" HT.	5 GALLON	6' HT. X 6' SPD.
BM	BLUE MIST SPIREA	CARYOPTERIS CLANDONENSIS	20	MIN. 18" HT.	5 GALLON	2' HT. X 3' SPD.
BV	BURKWOOD VIBURNUM	VIBURNUM X BURKWOODII	8	MIN. 18" SPD.	5 GALLON	8' HT. X 6' SPD.
CM	CURLLEAF MOUNTAIN MAHOGANY	CERCOCARPUS LEDIFOLIUS	11	MIN. 12" HT.	5 GALLON	3' HT. X 5' SPD.
CO	CREEPING OREGON GRAPE	MAHONIA AQUIFOLIUM 'COMPACTA'	2	MIN. 12" SPD.	5 GALLON	3' HT. X 4' SPD.
CH	CHERRY SAGE	SALVIA GREGII	28	MIN. 18" HT.	5 GALLON	2' HT. X 3' SPD.
CW	COYOTE WILLOW	SALIX EXIGUA	16	MIN. 18" HT.	5 GALLON	5' HT. X 3' SPD.
DG	DEER GRASS	MUHLENBERGIA RIGENS	8	MIN. 18" HT.	5 GALLON	4' HT. X 4' SPD.
DM	DESERT MARIGOLD	BALLEVA RADIATA	17	MIN. 18" HT.	1 GALLON	1' HT. X 1' SPD.
FB	FERNBUSH	CHAMAEBATIARIA MILLEFOLIUM	28	MIN. 18" HT.	5 GALLON	5' HT. X 5' SPD.
MD	MAXIMILIAN DAISY	HELIANTHUS MAXIMILIANI	7	MIN. 18" HT.	5 GALLON	5' HT. X 4' SPD.
PB	PINK BUTTERFLY BUSH	BUDDLEIA DAVIDII 'PINK'	31	MIN. 18" HT.	5 GALLON	6' HT. X 6' SPD.
PR	PROSTRATE THREE-LEAF SUMAC	RHUS TRILOBATA 'AUTUMN AMBER'	15	MIN. 18" HT.	5 GALLON	2' HT. X 6' SPD.
RR	RUBBER RABBITBRUSH	ERICAMERIA NAUSEOSA	30	MIN. 18" HT.	5 GALLON	5' HT. X 6' SPD.
SG	SWITCHGRASS	PANICUM VIRGATUM	19	MIN. 18" HT.	5 GALLON	3' HT. X 2' SPD.
SS	SAND SAGE	ARTEMISIA FILIFOLIA	33	MIN. 18" HT.	5 GALLON	4' HT. X 4' SPD.
TB	TURPENTINE BUSH	ERICAMERIA LARICIFOLIA	7	MIN. 12" HT.	1 GALLON	3' HT. X 3' SPD.
WS	WESTERN SAND CHERRY	PRUNUS BESSEYI	17	MIN. 18" HT.	5 GALLON	5' HT. X 5' SPD.

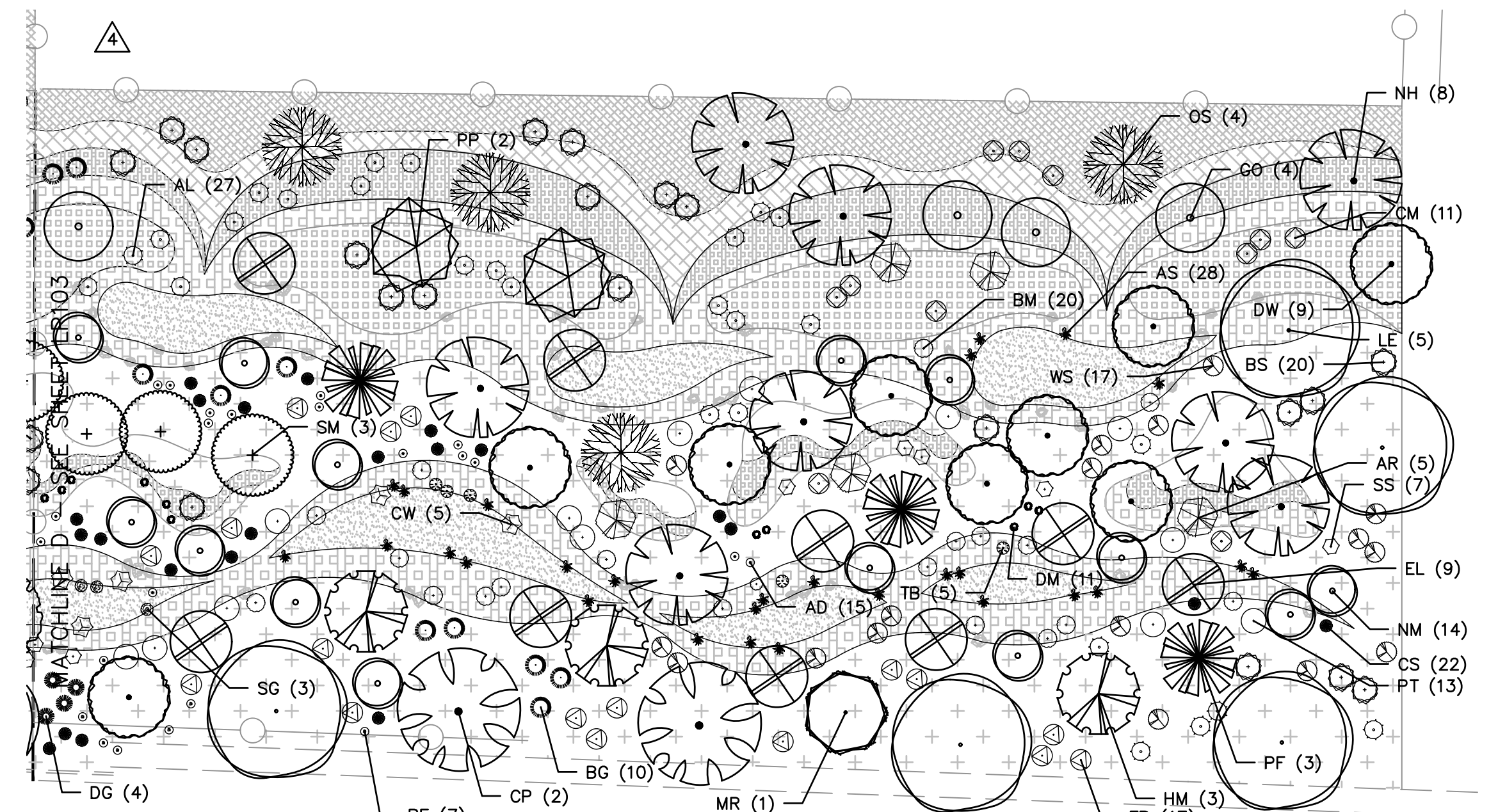
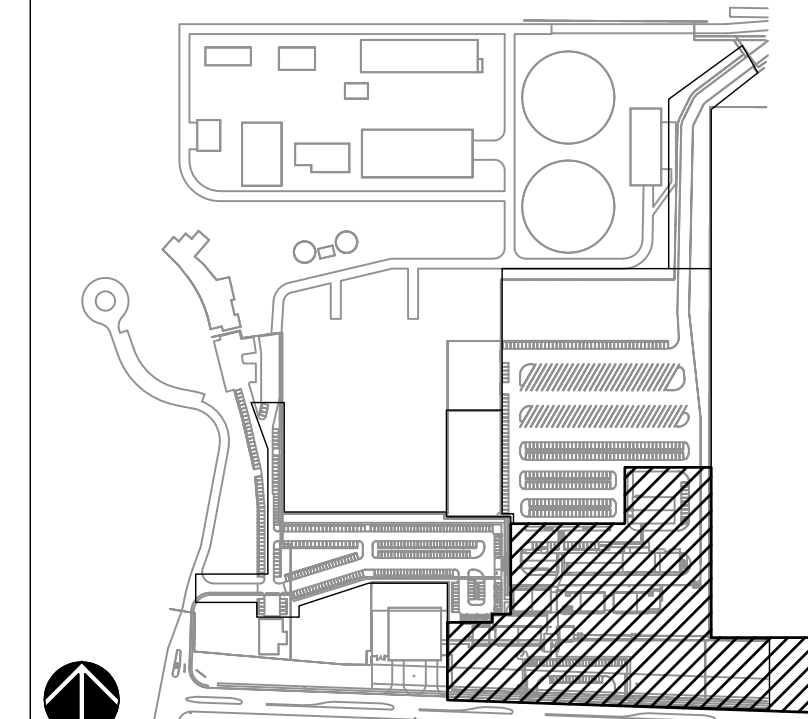
KEYED NOTES

- APPROXIMATE LOCATION OF PROPOSED SOLAR PANELS, REFERENCE CIVIL PLANS.

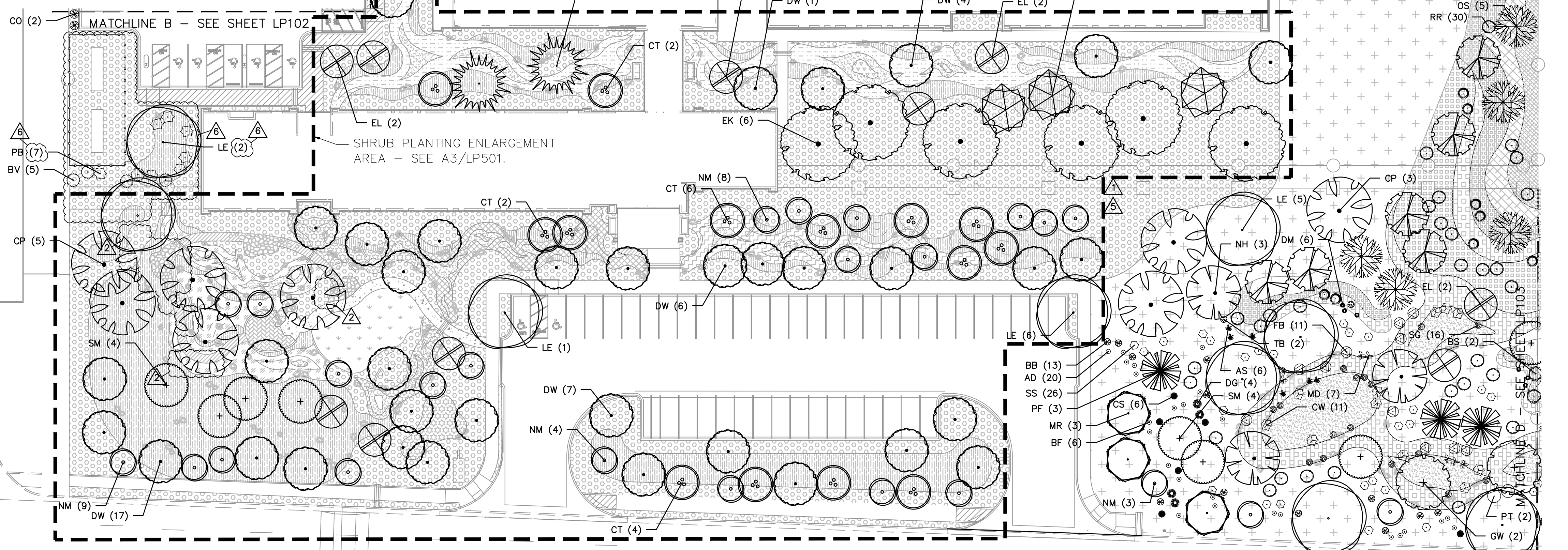
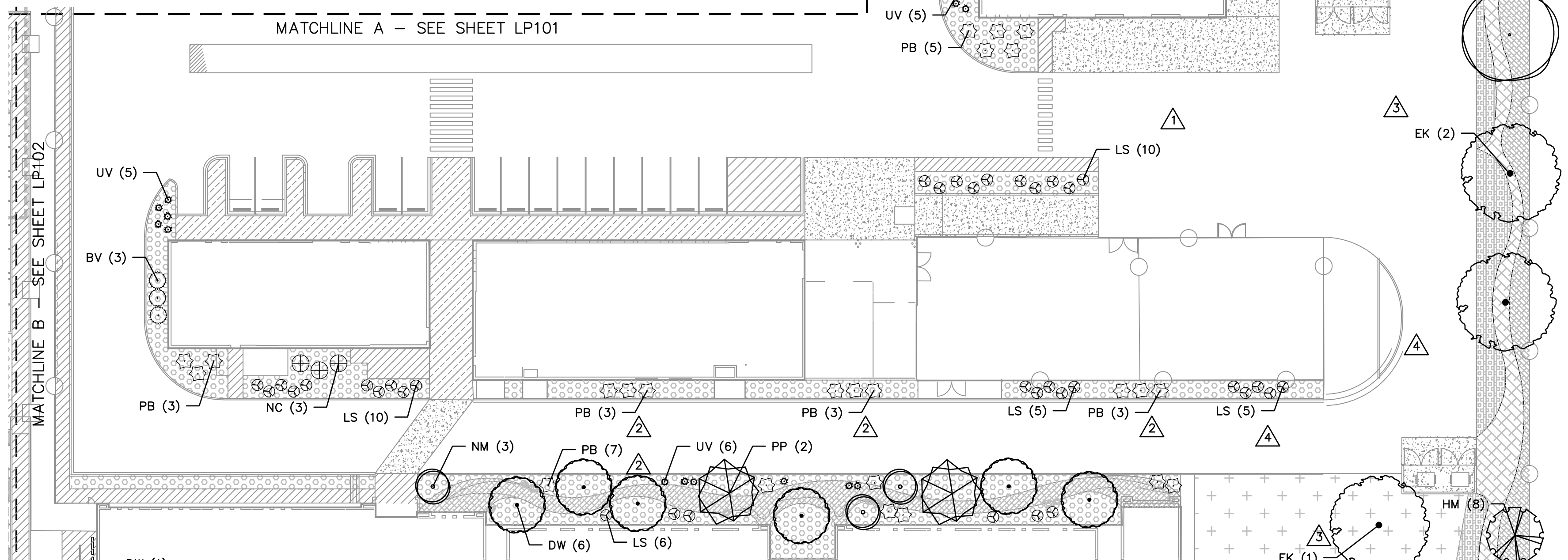
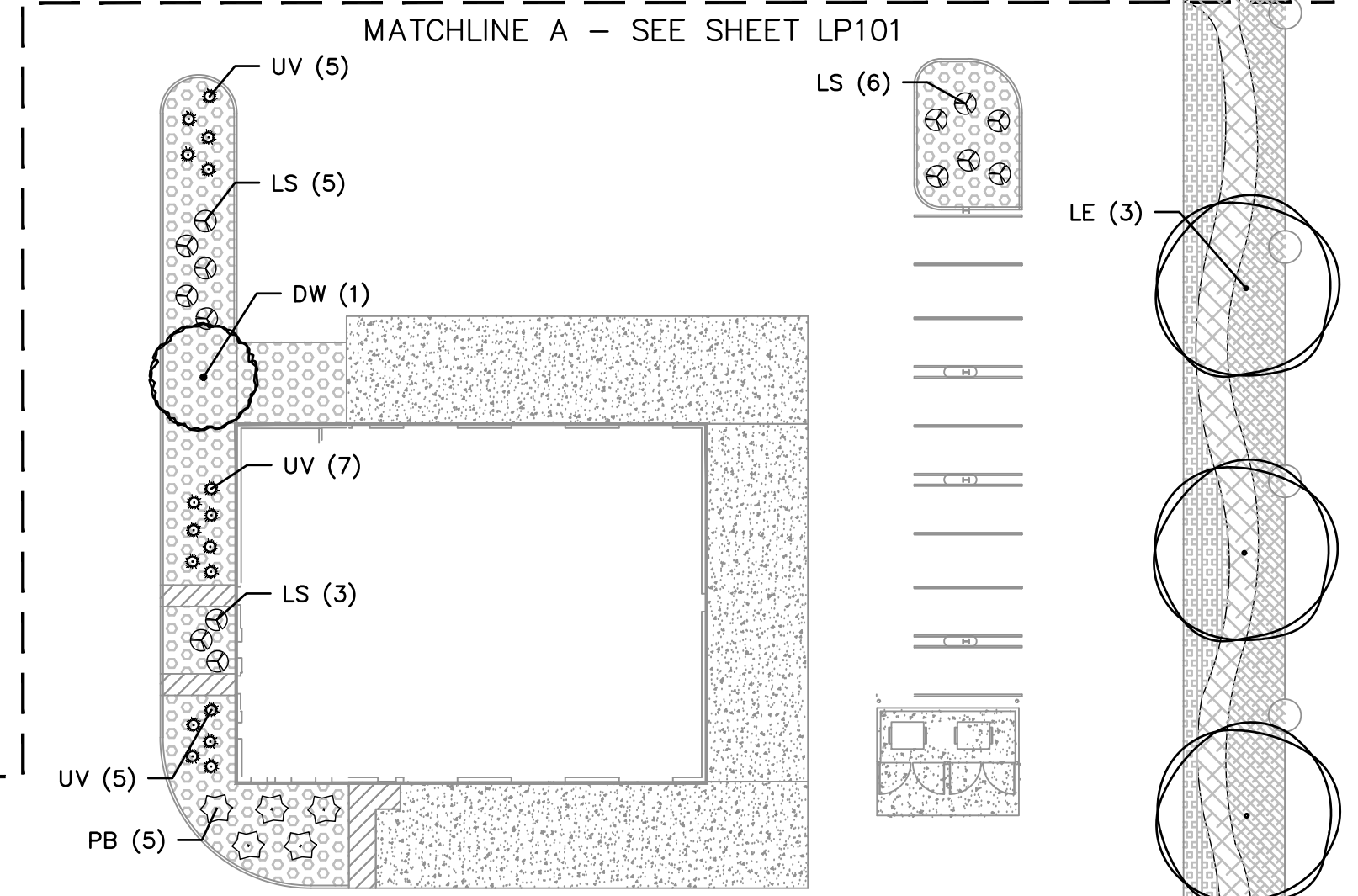
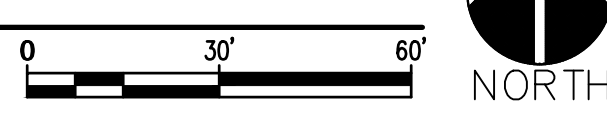
PLANTING NOTES

- IN CASE OF DISCREPANCY IN PLANT QUANTITIES SHOWN ON THE PLANT LEGEND AND THOSE SHOWN ON THE PLANTING PLAN, THE QUANTITIES SHOWN ON THE PLAN SHALL GOVERN. CONTRACTOR SHALL VERIFY ALL QUANTITIES PRIOR TO BID AND INSTALLATION. NO ADDITIONAL PAYMENT WILL BE MADE FOR ANY DISCREPANCIES IN QUANTITIES BETWEEN THE PLANTING PLAN AND THE PLANT LIST.
- CONTRACTOR SHALL PRUNE LOWER BRANCHES OF DECIDUOUS TREES AS DIRECTED BY LANDSCAPE ARCHITECT IN THE FIELD.
- TREES SHALL BE INSTALLED PER DETAIL A1/LP501.
- SHRUBS SHALL BE INSTALLED PER DETAIL E1/LP501.
- IF THERE IS A DISCREPANCY IN THE FIELD OR NURSERY BETWEEN THE CONTAINER SIZE CALLED OUT UNDER "REMARKS" AND HEIGHT & SPREAD CALLED OUT UNDER "SIZE", THE SPECIFIED PLANT MUST MEET HEIGHT & SPREAD REQUIREMENTS SPECIFIED UNDER "SIZE". EVEN IF A LARGER CONTAINER SIZE IS REQUIRED TO MEET THESE SPECIFICATIONS, AT NO ADDITIONAL COST TO THE OWNER.
- TREES INSTALLED WITHIN NATIVE SEED AREAS SHALL HAVE A 4" DEPTH OF ORGANIC MULCH WITHIN A 6" DIAMETER AREA AT THE BASE OF EACH TREE, REFERENCE CONSTRUCTION PLAN, SHEET LS101 FOR MATERIAL.
- SHRUBS INSTALLED WITHIN NATIVE SEED AREAS SHALL HAVE A 4" DEPTH OF ORGANIC MULCH WITHIN A 3" DIAMETER AREA AT THE BASE OF EACH SHRUB, REFERENCE CONSTRUCTION PLAN, SHEET LS101 FOR MATERIAL.

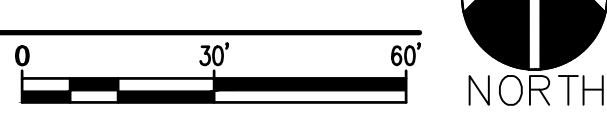
KEYMAP



F1 PLANTING PLAN
SCALE: 1"=30'-0"



A1 PLANTING PLAN
SCALE: 1"=30'-0"



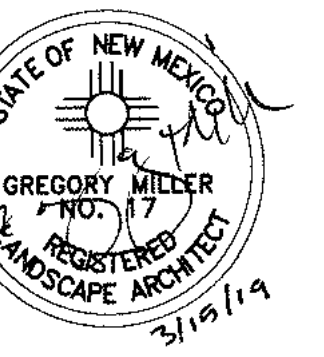
ALBUQUERQUE BERNALILLO COUNTY WATER UTILITY AUTHORITY
CUSTOMER SERVICE AND OPERATIONS FACILITIES - SITEMWORK
6000 Alexander Blvd NE, Albuquerque, NM 87107

NO	DATE	DESCRIPTION
6	2020-08-13	ASL-RF1 237R0
5	2020-08-25	ASL-064R0
4	2020-08-10	ASL-060R0
3	2019-10-10	PERMIT UPDATE
2	2019-08-06	ASL-060R0
1	2019-03-28	ADDENDUM 1

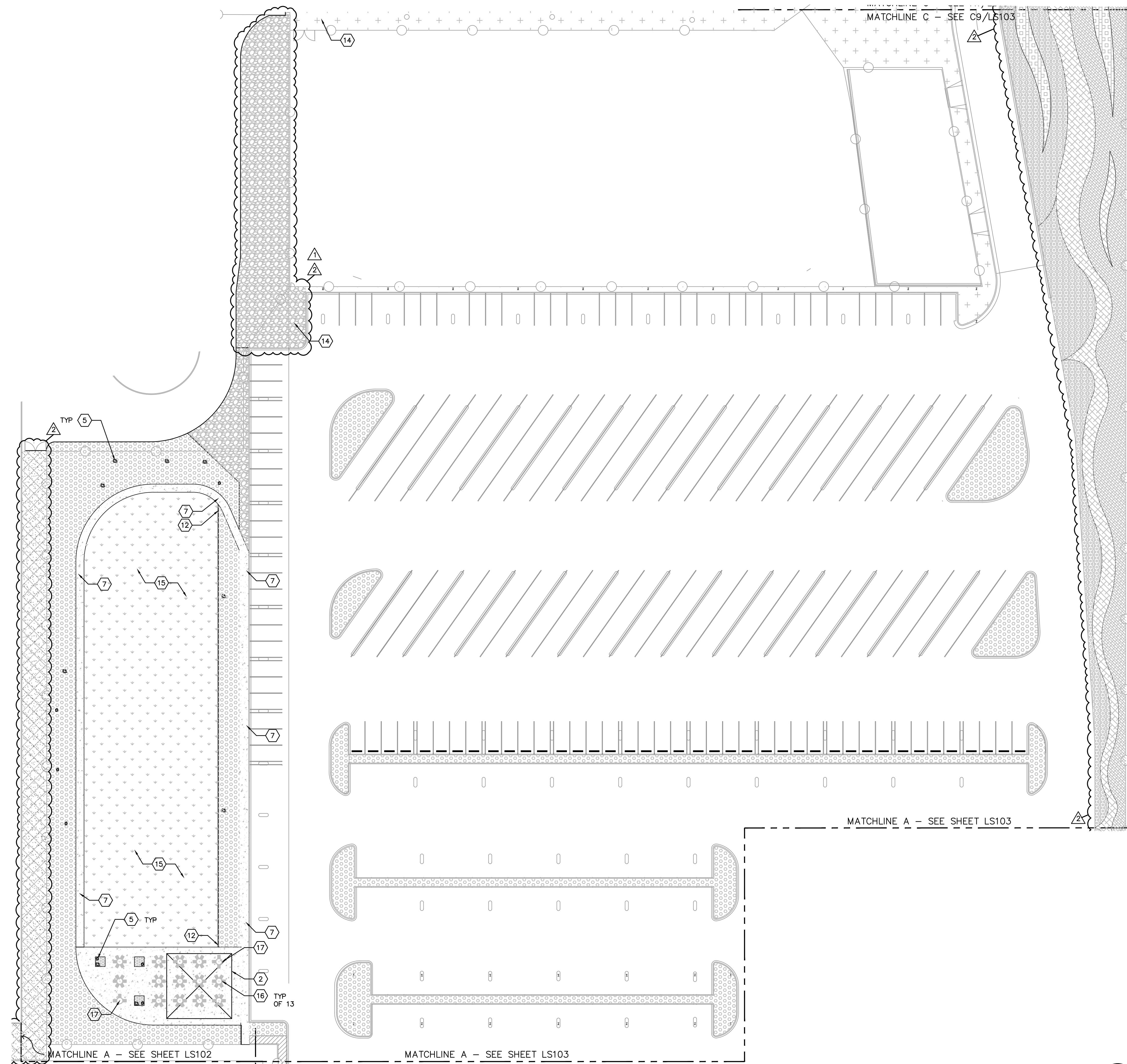
DATE: MAY 15TH, 2019
PROJECT #: 18018
DRAWN BY: JW
CHK BY: GM
Copyright: SMPC Architects © 2019
These documents were prepared for this specific project only. SMPC Architects' liability is limited to this specific project, and does not extend to review of these documents for other projects.

PLANTING PLAN

LP103.R6
SHEET OF



ALBUQUERQUE BERNALILLO COUNTY WATER UTILITY AUTHORITY
**CUSTOMER SERVICE AND OPERATIONS FACILITIES -
SITEWORK**
6000 Alexander Blvd NE, Albuquerque, NM 87107



CONSTRUCTION KEYED NOTES

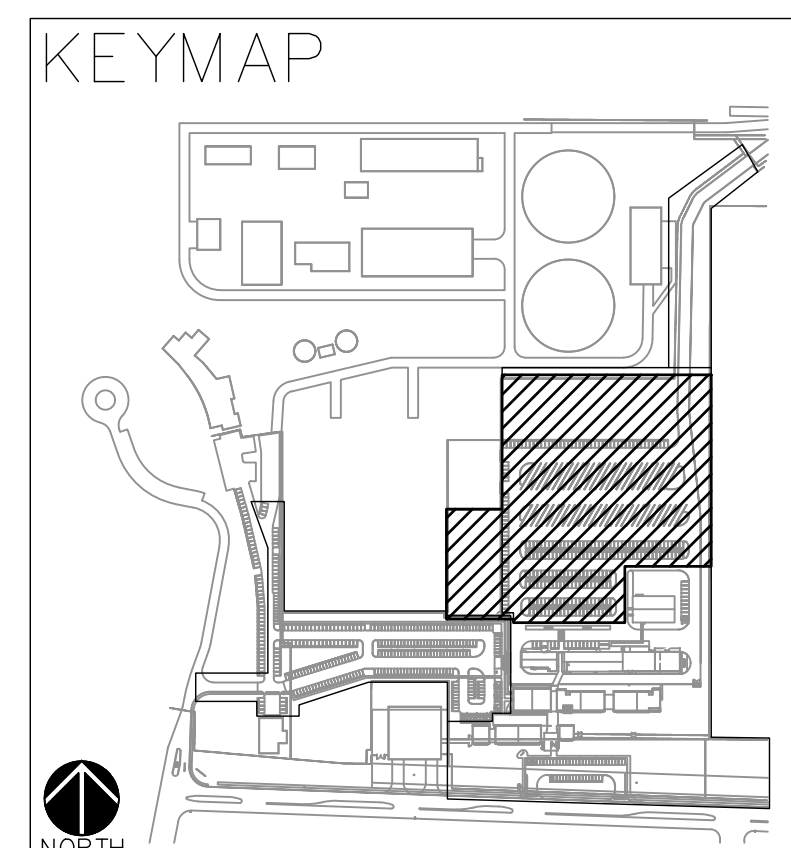
- APPROXIMATE LIMIT OF LANDSCAPE SWALE, CONSTRUCT SWALE PER DETAIL J1/LP501. REFERENCE CIVIL PLANS FOR SWALE EXTENTS AND GRADING.
- FURNISH AND INSTALL SUPERIOR SHADE 40'X40' SOLAR SHADE STRUCTURE, HIP DESIGN, AS AVAILABLE FROM PLAY-NM (505) 321-0453. REFERENCE PROPOSAL NUMBER 21632705. INSTALL PER MANUFACTURER'S RECOMMENDATIONS.
- INSTALL PERMEABLE CONCRETE PAVER PLAZA PER DETAIL A7/L5501. PAVERS SHALL BE BELGARD 'AQUA ROC II', OR PRE-APPROVED EQUAL PATTERN: HERRINGBONE, COLOR: DESERT BLEND. INSTALL ALUMINUM PAVER EDGING PER DETAIL E7/L5501 WHERE PAVERS ABUT MULCHES.
- CONSTRUCT 12" WIDE FREE STANDING CONCRETE SEATWALL PER DETAIL G10/L5501.
- FURNISH AND INSTALL ACCENT LANDSCAPE BOULDER, BOULDERS SHALL BE 12-18 CF, SANDSTONE, INSTALLED PER DETAIL J4/LP501.
- CONSTRUCT 8" WIDE CONCRETE ACCENT CURB, REFERENCE DETAIL H4/L5501.
- CONSTRUCT 4" THICK CONCRETE WALK OR PAVING. CONTROL JOINT SPACING SHALL BE 5' O.C. MAXIMUM, EXPANSION JOINT SPACING SHALL BE 20' O.C. MAXIMUM. REFERENCE CIVIL DETAILS FOR CONCRETE CONSTRUCTION.
- FLAGSTONE WALK, INSTALL PER DETAIL A4/L5501.
- CONSTRUCT BIKE RACK ASSEMBLY, REFERENCE DETAIL H1/L5501. BIKE RACKS SHALL BE LANDSCAPE FORMS MODEL LOOP, AS AVAILABLE FROM ENVALL ASSOCIATES, INC. (505) 453-5315.
- CONSTRUCT RAINWATER CATCHMENT BASIN, REFERENCE DETAIL A1/L5501.
- CONSTRUCT DRAINAGE CULVERT, (2) 6" DIA. CORRUGATED DRAINAGE CULVERT PIPES. INSTALL FOR POSITIVE DRAINAGE UNDER SIDEWALK. INVERT ELEVATION SHALL BE EQUAL TO BOTTOM OF SWALE ELEVATIONS. EXTEND PIPE A MINIMUM OF 18" BEYOND EDGE OF WALKWAY ABOVE IN BOTH DIRECTIONS.
- CONSTRUCT 6" CONCRETE MOW CURB PER DETAIL H7/L5501.
- BERM, REFERENCE CIVIL PLANS.
- REVEGETATION SEEDING SHALL BE 'PIONEERS PRIDE', AS AVAILABLE FROM CURTIS & CURTIS (575-762-4759), OR EQUAL. DRILL SEED AT 2 POUNDS PER 1000 SQUARE FEET. SEE SPECIFICATIONS. INSTALL UNDER
- SOD SHALL BE 'PARK BLEND', AS AVAILABLE FROM EVERGREEN TURF, (505-384-2430), OR APPROVED EQUAL. TOP OF SOD SHALL BE INSTALLED 1" BELOW TOP OF ADJACENT CONCRETE SURFACES.
- FURNISH AND INSTALL ANOVA L13925 - RENDEZVOUS TABLE WITH 6 CONTOUR SWIVEL SEATS, AS AVAILABLE FROM EXERPLAY, INC. (800) 457-5444.
- FURNISH AND INSTALL ANOVA L13955 - RENDEZVOUS ADA ACCESSIBLE TABLE WITH 3 CONTOUR SWIVEL SEATS, AS AVAILABLE FROM EXERPLAY, INC. (800) 457-5444.
- FURNISH AND INSTALL DIMOR 188-09 BIKE RACK, COLOR: BLACK, AS AVAILABLE FROM EXERPLAY, INC. (800) 457-5444.

CONSTRUCTION GENERAL NOTES

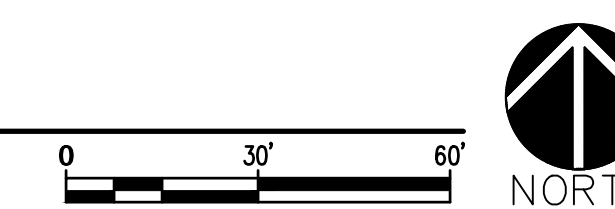
- LANDSCAPE ARCHITECT WILL PROVIDE AUTOCAD ELECTRONIC VERSIONS OF THE PLAN FOR SURVEYING AND LAYOUT PURPOSES.
- ALL GRAVEL MULCHES THAT DO NOT ABUT OTHER GRAVELS OR CONCRETE PAVING SHALL HAVE AN UNBOUND EDGE PER DETAIL F4/LP501 UNLESS SHOWN OTHERWISE PER PLAN.

HATCH LEGEND

- PAVERS - SEE CONSTRUCTION KEYED NOTE 3.
- CONCRETE - SEE CONSTRUCTION KEYED NOTE 7.
- GRAVEL MULCH SHALL BE 1" 'AMARETTO BROWN', INSTALLED AT A 4" DEPTH OVER FILTER FABRIC.
- COBBLE MULCH, 2"-4" 'PUEBLO ROSE', INSTALLED AT A 4" DEPTH OVER FILTER FABRIC.
- COBBLE MULCH, 2"-4" 'SANGRIA', INSTALLED AT A 4" DEPTH OVER FILTER FABRIC.
- COBBLE MULCH, 2"-4" 'COYOTE MIST', INSTALLED AT A 4" DEPTH OVER FILTER FABRIC.
- COBBLE MULCH, 2"-4" 'BLUE SCHIST', INSTALLED AT A 4" DEPTH OVER FILTER FABRIC.
- COBBLE MULCH, 2"-4" 'PINK SCHIST', INSTALLED AT A 4" DEPTH OVER FILTER FABRIC.
- SAND/GRAVEL MULCH BLEND, INSTALL AT A 6" DEPTH WITHOUT FILTER FABRIC.
- STABILIZED CRUSHER FINES PATH WITH UNBOUND EDGE, CRUSHER FINES SHALL BE 'AMARETTO BROWN', INSTALL PER DETAIL E4/L5501.
- ORGANIC SCREENED MULCH OVER REVEGETATION SEEDING - SEE CONSTRUCTION KEYED NOTE 14. ORGANIC MULCH, AS AVAILABLE FROM SOLUTIONS, INC. (505) 877-0220, INSTALLED AT A 4" DEPTH WITH NO FILTER FABRIC.
- TURFGRASS SOD - SEE CONSTRUCTION KEYED NOTE 15.
- ORGANIC MULCH - SCREENED MULCH, AS AVAILABLE FROM SOLUTIONS, INC. (505) 877-0220, INSTALLED AT A 4" DEPTH WITH NO FILTER FABRIC.
- COBBLE MULCH, 2"-4" 'AMARETTO BROWN', INSTALLED AT A 4" DEPTH OVER FILTER FABRIC.
- GRAVEL MULCH SHALL BE 1" 'AMARETTO BROWN', INSTALLED AT A 1" DEPTH OVER REVEGETATION SEEDING WITHOUT FILTER FABRIC. SEE CONSTRUCTION KEYED NOTE 14 FOR REVEGETATION SEEDING INFORMATION.
- GRAVEL MULCH SHALL BE 2"-4" 'AMARETTO BROWN', INSTALLED AT A 4" DEPTH WITHOUT FILTER FABRIC, OVER REVEGETATION SEEDING WITHOUT FILTER FABRIC. CONSTRUCTION KEYED NOTE 14 FOR REVEGETATION SEEDING INFORMATION.
- GRAVEL MULCH SHALL BE 1" 'PUEBLO ROSE', INSTALLED AT A 1" DEPTH WITHOUT FILTER FABRIC OVER REVEGETATION SEEDING. SEE CONSTRUCTION KEYED NOTE 14 FOR REVEGETATION SEEDING INFORMATION.
- GRAVEL MULCH SHALL BE 2"-4" 'PUEBLO ROSE', INSTALLED AT A 4" DEPTH WITHOUT FILTER FABRIC OVER REVEGETATION SEEDING. SEE CONSTRUCTION KEYED NOTE 14 FOR REVEGETATION SEEDING INFORMATION.
- GRAVEL MULCH SHALL BE 1" 'ANGULAR TAN', INSTALLED AT A 1" DEPTH WITHOUT FILTER FABRIC OVER REVEGETATION SEEDING. SEE CONSTRUCTION KEYED NOTE 14 FOR REVEGETATION SEEDING INFORMATION.
- MAINTENANCE DRIVE AISLE BASE SHALL BE 2" MINUS 'BLUE SAIS' INSTALLED AT A 4" DEPTH WITH NO FILTER FABRIC, ADD WATER ROLL, AND COMPACT TO 95%.



A2 LANDSCAPE CONSTRUCTION PLAN
SCALE: 1"=30'-0"



NO	DATE	DESCRIPTION
2	2020-06-10	ASI-060RO
1	2020-03-13	RFL-156RO
NO	DATE	DESCRIPTION
DATE:	MAY 15TH, 2019	
PROJECT #	18018	
DRAWN BY:	JW	
CHK BY:	GM	
Copyright	SMP Architects © 2019	
These documents were prepared for this specific project only. SMP Architects' liability is limited to this specific project, and does not extend to review of these documents for other projects.		
SHEET TITLE		

LANDSCAPE CONSTRUCTION PLAN

LS101.R2
SHEET OF