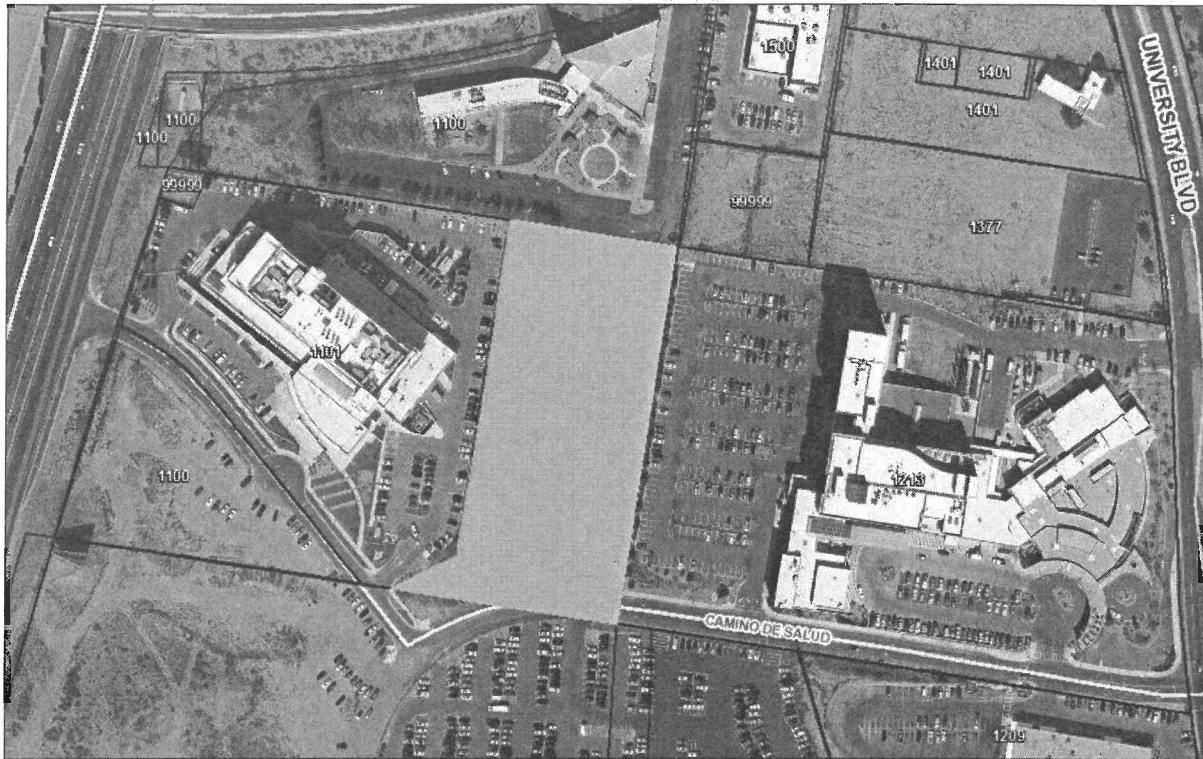
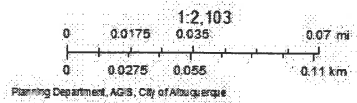


ArcGIS Web Map



7/18/2018 10:54:57 AM

- | | | | |
|----------------|--------------------------|------------------------|--------------------|
| Parcels | Neighborhoods | Primary Streets | Minor Arterial |
| BarnCo Parcels | Neighborhood Association | Freeway | Local Streets |
| | | Principal Arterial | BN and SF Railroad |



City of Albuquerque
NRCAN, Geobase, IGN, Kadaster NL, Ordnance Survey, Esri Japan, METI, Esri China (Hong Kong), Swisstopo, © OpenStreetMap contributors, and the GIS User Community | Planning Department, AGIS, City of Albuquerque | AGIS Division, City of Albuquerque | Planning Department, Office of Neighborhood Coordination, City of Albuquerque, Council Services Department

Owner	Owner Address	Owner Address 2
REGENTS OF UNM REAL ESTATE DEPT	MSC06-3595-1 UNIVERSITY OF NM	ALBUQUERQUE NM 87131-0001
THE REGENTS OF THE UNIVERSITY OF NM % UNIVERSITY OF NM REAL ESTATE OFFICE	1712 LAS LOMAS NE	ALBUQUERQUE NM 87131-0001
ST PAULS EVANGL LUTHERN CH	PO BOX 25001	ALBUQUERQUE NM 87125-0001
REGENTS OF UNM REAL ESTATE OFFICE	SCHOLES HALL 252	ALBUQUERQUE NM 87131-3181
REGENTS OF THE UNIV OF NM ATTN DIRECTOR OF REAL ESTATE	SCHOLES HALL STE 233	ALBUQUERQUE NM 87131-3181
STATE OF NEW MEXICO C/O PROPERTY CONTROL DIVISION	1100 ST FRANCIS DR	SANTA FE NM 87502