

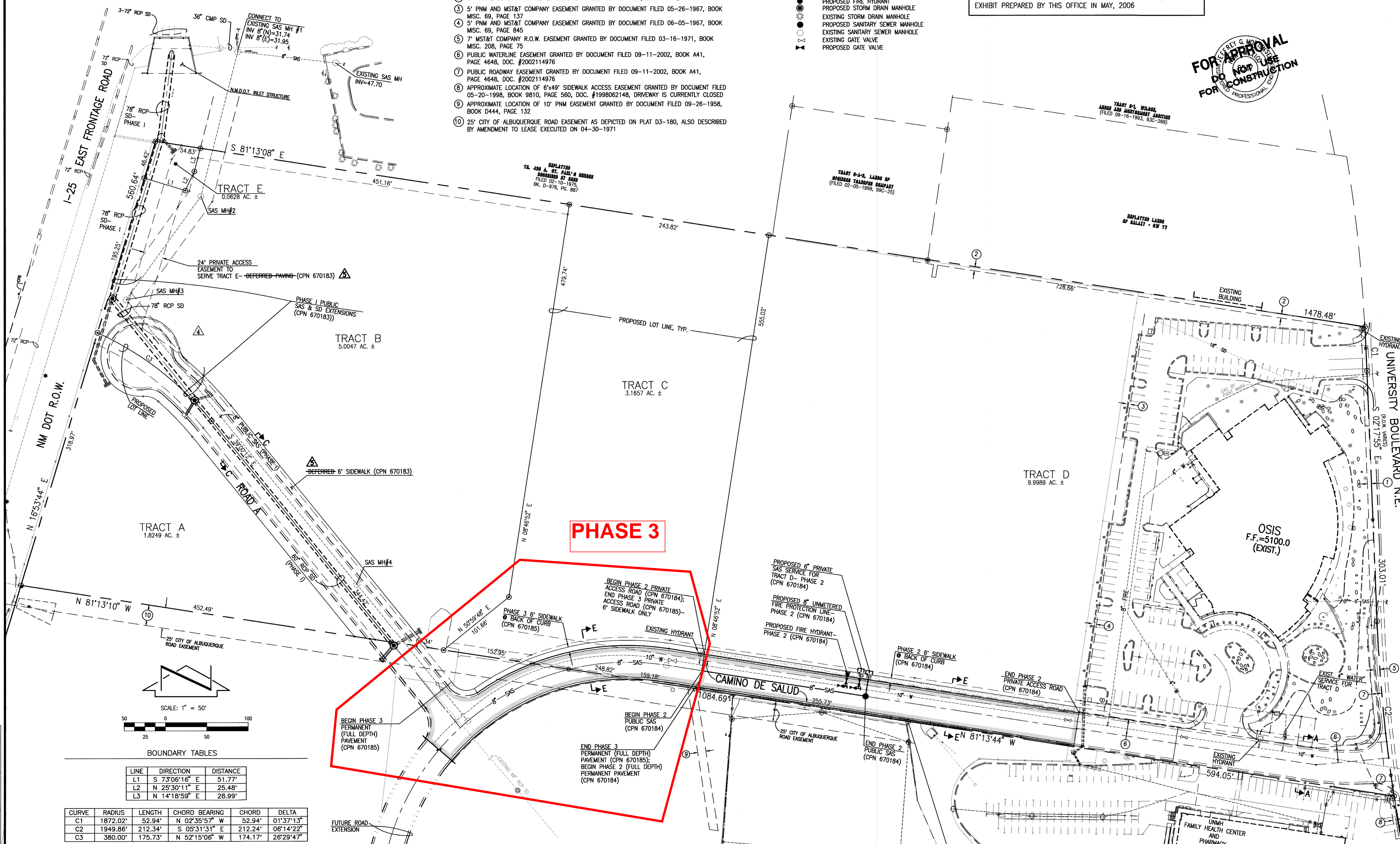
EASEMENT KEYED NOTES

- ① 5' MST&T COMPANY R.O.W. EASEMENT GRANTED BY DOCUMENT FILED 03-16-1971, BOOK MISC. 208, PAGES 73-74, DOC. #16473
- ② 5' PNM EASEMENT GRANTED BY DOCUMENT FILED 02-12-1960, BOOK D527, PAGE 23
- ③ 5' PNM AND MST&T COMPANY EASEMENT GRANTED BY DOCUMENT FILED 05-26-1967, BOOK MISC. 69, PAGE 137
- ④ 5' PNM AND MST&T COMPANY EASEMENT GRANTED BY DOCUMENT FILED 06-05-1967, BOOK MISC. 69, PAGE 845
- ⑤ 7' MST&T COMPANY R.O.W. EASEMENT GRANTED BY DOCUMENT FILED 03-16-1971, BOOK MISC. 208, PAGE 75
- ⑥ PUBLIC WATERLINE EASEMENT GRANTED BY DOCUMENT FILED 09-11-2002, BOOK A41, PAGE 4648, DOC. #2002114976
- ⑦ PUBLIC ROADWAY EASEMENT GRANTED BY DOCUMENT FILED 09-11-2002, BOOK A41, PAGE 4648, DOC. #2002114976
- ⑧ APPROXIMATE LOCATION OF 6'x49' SIDEWALK ACCESS EASEMENT GRANTED BY DOCUMENT FILED 05-20-1998, BOOK 9810, PAGE 560, DOC. #1998062148, DRIVEWAY IS CURRENTLY CLOSED
- ⑨ APPROXIMATE LOCATION OF 10' PNM EASEMENT GRANTED BY DOCUMENT FILED 09-26-1958, BOOK D444, PAGE 132
- ⑩ 25' CITY OF ALBUQUERQUE ROAD EASEMENT AS DEPICTED ON PLAT D3-180, ALSO DESCRIBED BY AMENDMENT TO LEASE EXECUTED ON 04-30-1971

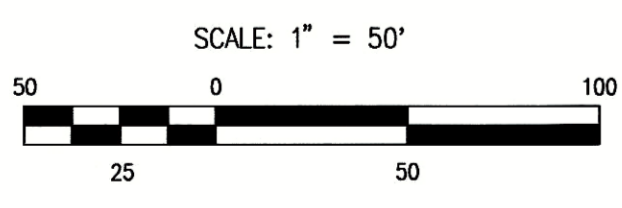
LEGEND

- OH(1) OVERHEAD LINES (NO. OF LINES)
- EXISTING PAVEMENT/CURB
- EXISTING FIRE HYDRANT
- PROPOSED FIRE HYDRANT
- PROPOSED STORM DRAIN MANHOLE
- EXISTING STORM DRAIN MANHOLE
- PROPOSED SANITARY SEWER MANHOLE
- EXISTING SANITARY SEWER MANHOLE
- EXISTING GATE VALVE
- PROPOSED GATE VALVE

NOTE:
THIS IS NOT A BOUNDARY SURVEY. APPARENT PROPERTY CORNERS ARE SHOWN HEREON FOR ORIENTATION PURPOSES ONLY. BOUNDARY INFORMATION IS FROM A SKETCH PLAT AND VACATION REQUEST EXHIBIT PREPARED BY THIS OFFICE IN MAY, 2006



PHASE 3



BOUNDARY TABLES

LINE	DIRECTION	DISTANCE
L1	S 73°06'16" E	51.77'
L2	N 25°30'11" E	25.48'
L3	N 14°18'59" E	28.99'

CURVE	RADIUS	LENGTH	CHORD BEARING	CHORD	DELTA
C1	1872.02'	52.94'	N 02°35'57" W	52.94'	01°37'13"
C2	1949.86'	212.34'	S 05°31'31" E	212.24'	06°14'22"
C3	380.00'	175.73'	N 52°15'06" W	174.17'	26°29'47"

PHASE 2 AND 3 IMPROVEMENTS - OPTION B
UNM LANDS WEST INFRASTRUCTURE MASTER PLAN

DESIGNED BY	DATE	BY	REVISIONS	JOB NO.
J.G.M.	05/06	J.G.M.	REVISE LOTTING	2005.170.8
J.L.P./R.R.W.	11/06	J.G.M.	REVISE ROAD ALIGNMENTS	DATE 01-2007
J.G.M.	12/06	J.G.M.	ADJUST PHASE LIMITS	SHEET 3 OF 4
J.G.M.	01/07	J.G.M.	REVISE FOR CUL-DE-SAC	
J.G.M.	02/07	J.G.M.	DELETE DEFERRED CONSTRUCTION-TRACT B	

File Path: E:\JG\WORK\2007\12-02-2007 Plot Date: 02-12-2007
 File Name: 51708PH23R-B5.DWG Plot Time: 08:37 am



JEFF MORTENSEN & ASSOCIATES, INC.
 6010-B MIDWAY PARK BLVD. N.E.
 ALBUQUERQUE, N.M. 87109
 ENGINEERS & SURVEYORS (SOS) 345-4290
 FAX: 305-345-4254 ESTABLISHED 1977