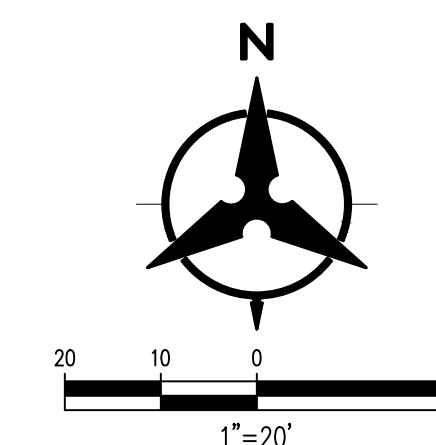


GRADING KEYED NOTES*

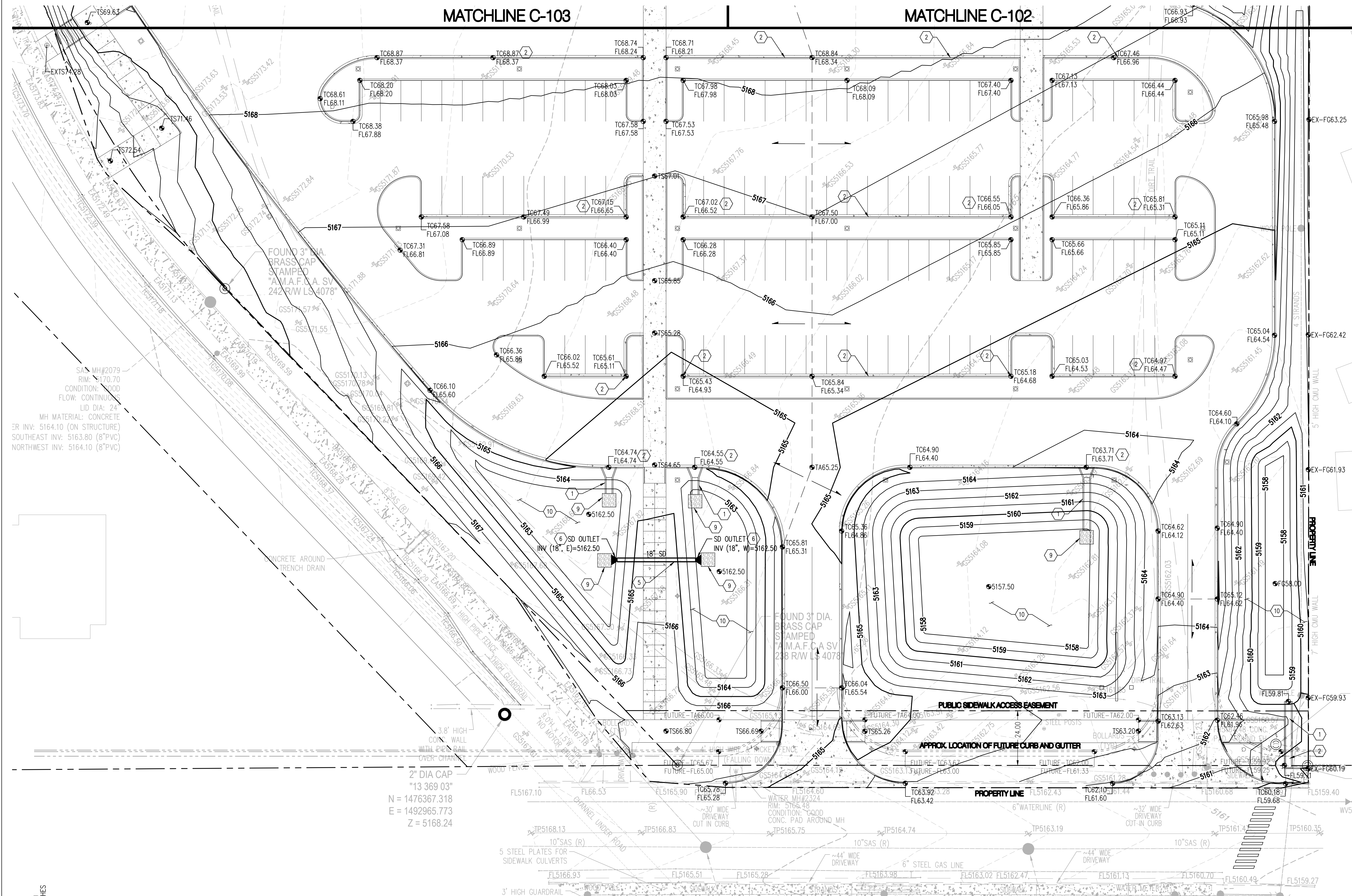
1. INSTALL CONCRETE RIBBON CHANNEL
2. INSTALL CONCRETE CURB OPENING
3. INSTALL RIP-RAP SWALE
4. INSTALL EMERGENCY OVERFLOW WEIR
5. INSTALL STORM DRAIN
6. INSTALL STORM DRAIN END SECTION
7. RETAINING WALL
8. INSTALL LANDSCAPED BERM
9. INSTALL RIP-RAP PAD
10. RETENTION POND

*NOT ALL KEYED NOTES ARE USED ON THIS SHEET



LEGEND

- PROPERTY LINE
- LIMITS OF GRADING
- - - 5025 EXISTING INDEX CONTOUR
- - - 5024 EXISTING INTERMEDIATE CONTOUR
- EX5025.25 EXISTING GROUND SPOT ELEVATION
- 5025 PROPOSED INDEX CONTOUR
- 5024 PROPOSED INTERMEDIATE CONTOUR
- PROPOSED FINISHED GRADE SPOT ELEVATION
- TC=TOP OF CURB, FL=FLOW LINE, TS=TOP OF SIDEWALK
- TO=TOP OF GRATE, FGH=FINISH GROUND HIGH, FGL=FINISH GROUND LOW
- PROPOSED CURB & GUTTER
- S=2.0% DIRECTION OF FLOW
- WATER BLOCK/GRADE BREAK
- PROPOSED STORM DRAIN LINE
- PROPOSED STORM DRAIN MANHOLE
- PROPOSED STORM DRAIN INLETS
- SWALE FLOWLINE
- TOP OF BERM
- GRADE BREAK
- XX.XX FUTURE SPOT ELEVATION



LEE GAMESKY ARCHITECTS P.C.
 2412 MILES ROAD SE
 ALBUQUERQUE, NM 87106
 505.842.8865 FAX 842.1693
 lee@lgame.com

WESTGATE COMMUNITY CENTER

10001 De Vargas Road SW, Albuquerque, New Mexico 87121

PROJECT ARCHITECT: LEE GAMESKY, AIA
 PROJECT #: [blank]
 Date: 30 NOVEMBER 2018

SITE DEVELOPMENT PLAN FOR BUILDING PERMIT
DRB PROJECT NO.:

GRADING AND DRAINAGE - SOUTH

By: JPW
 SHEET: SITE DEVELOPMENT PLAN

Sheet: Of:
 C-101



NOT FOR CONSTRUCTION

Bohannon & Huston
 www.bhinc.com 800.877.5332

P:\2018\016A\CDP\Plans\General\2018016\gdr01.dwg
 Wed, 28-Nov-2018 - 7:00pm. Plotted by: MSATCHES

SA MH#2079
 RIM: 170.70
 CONDITION: GOOD
 FLOW: CONTINUOUS
 LID DIA: 24"
 MH MATERIAL: CONCRETE
 ER INV: 5164.10 (ON STRUCTURE)
 SOUTHEAST INV: 5163.80 (8" PVC)
 NORTHWEST INV: 5164.10 (8" PVC)

FOUND 3" DIA.
 BRASS CAP
 STAMPED
 "A.M.A.F.C.A. SV
 242 R/W L.S. 4078"

FOUND 3" DIA.
 BRASS CAP
 STAMPED
 "A.M.A.F.C.A. SV
 238 R/W L.S. 4078"

2" DIA CAP
 "13 369 03"
 N = 1476367.318
 E = 1492965.773
 Z = 5168.24