

GENERAL NOTES

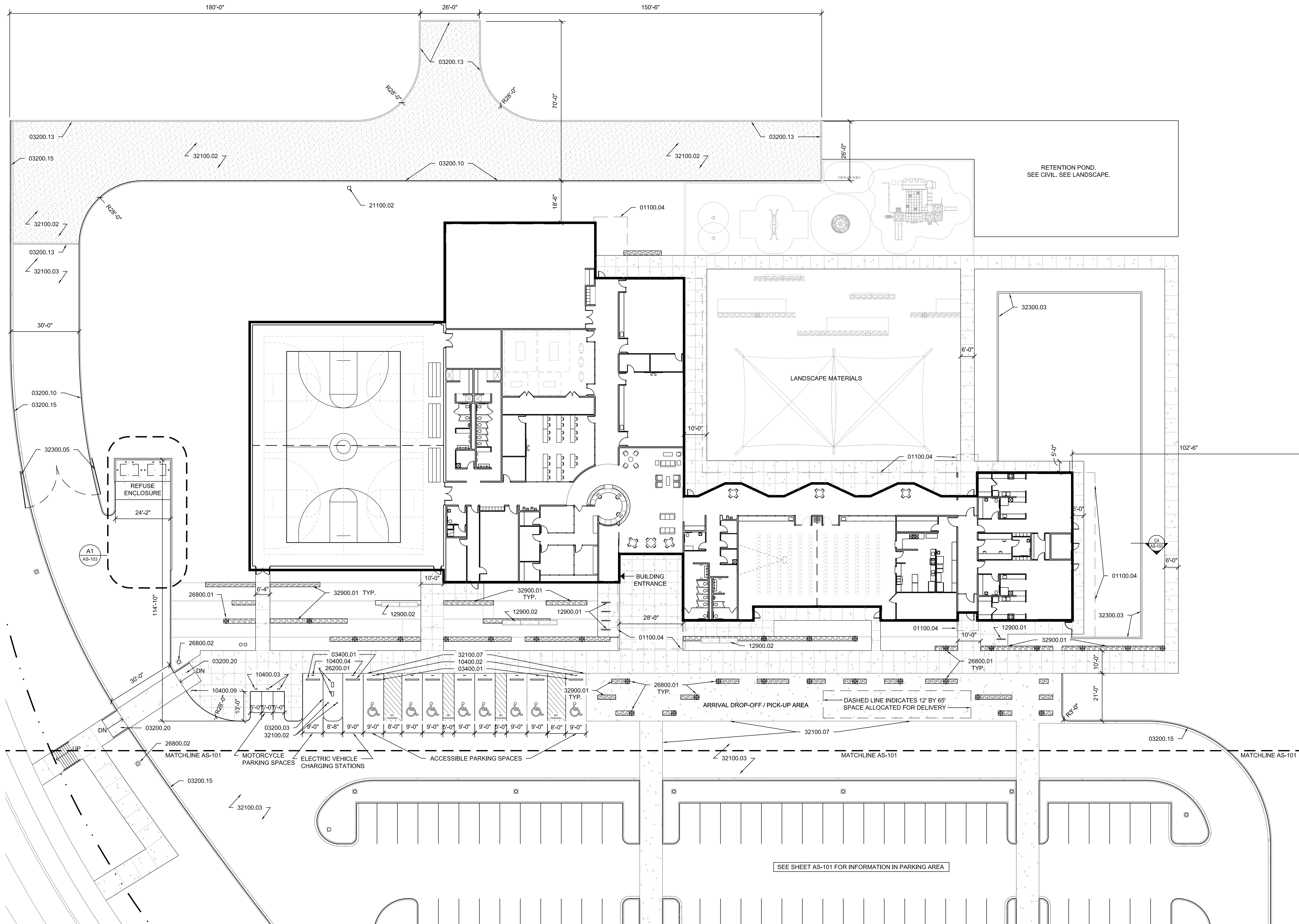
A. ADA ACCESS AISLES SHALL HAVE THE WORDS "NO PARKING" IN CAPITAL LETTERS, EACH OF WHICH SHALL BE AT LEAST 12" HIGH AND AT LEAST 2" WIDE, PLACED AT THE REAR OF THE PARKING SPACES

KEYED NOTES

- 01100.01 PROPERTY LINE.
- 01100.04 DASHED LINE INDICATES OVERHANG OF BUILDING ABOVE.
- 03200.01 EXISTING CONCRETE SIDEWALK TO REMAIN.
- 03200.02 CONCRETE SIDEWALK PER CITY OF ALBUQUERQUE STANDARD SPECIFICATIONS. REFER TO CITY STANDARD DETAIL DWG. 2430.
- 03200.03 3000 PSI AIR-ENTRAINED CONCRETE ISLAND, 6" HIGH.
- 03200.05 CAST-IN-PLACE CONCRETE WALL.
- 03200.07 CONCRETE PAVING.
- 03200.08 CONCRETE PAVING PER CITY OF ALBUQUERQUE STANDARD DETAIL 2426 FOR PRIVATE ENTRANCE.
- 03200.10 CONCRETE HEADER CURB PER COA STANDARD DWG. 2415 B. SEE SITE DETAILS.
- 03200.11 EXISTING CONCRETE CURB AND GUTTER.
- 03200.12 CONCRETE CURB AND GUTTER PER CITY OF ALBUQUERQUE SPECIFICATIONS. REFER TO CITY STANDARD DETAIL 2415.
- 03200.13 FLUSH CONCRETE HEADER CURB. SEE SITE DETAILS.
- 03200.14 MEDIAN CURB AND GUTTER WITH OPENINGS FOR DRAINAGE INTO LANDSCAPE AREA.
- 03200.15 MEDIAN CURB AND GUTTER PER COA STANDARD DWG. 2415 B. SEE SITE DETAILS.
- 03200.20 ACCESSIBLE SIDEWALK RAMP WITH TRUNCATED DOMES. PER COA STANDARD DWGS. 2440 AND 2426.
- 03400.01 6'-0" LONG PRECAST CONCRETE WHEEL STOP.
- 10400.02 ADA ACCESSIBLE PARKING SIGN. SEE DETAIL A3/AS-103.
- 10400.03 MOTORCYCLE PARKING SIGN. SEE SIM. DETAIL A3/AS-103.
- 10400.04 ELECTRIC VEHICLE PARKING SIGN. SEE SIM. DETAIL A3/AS-103.
- 10400.09 SIGNAGE STATING "SERVICE VEHICLES ONLY". SEE TYPICAL TRAFFIC SIGNAGE DETAIL.
- 12900.01 BIKE RACK. SEE DETAIL C3 / AS-103.
- 12900.02 BENCH.
- 21100.01 EXISTING RELOCATED FIRE HYDRANT.
- 21100.02 FIRE HYDRANT.
- 26200.01 ELECTRIC VEHICLE RECHARGING STATION.
- 26800.01 STEP LIGHT SET INTO CONCRETE, TYP. SEE LEGEND.
- 26800.02 LIGHT POLE, TYP. SEE LEGEND
- 26800.03 EXISTING LIGHT POLE.
- 32100.02 8" THICK AGGREGATE BASE COURSE COMPACTED TO 95% MIN. OVER EXISTING GRADE COMPACTED TO 95% MIN. ENGINEERED TO SUPPORT FIRE APPARATUS EQUIPMENT / VEHICLES.
- 32100.03 ASPHALT PAVING PER COA STANDARD SPECIFICATIONS.
- 32100.04 ASPHALT PAVING. 10' WIDE BIKE TRAIL. PER COA STANDARD SPECIFICATIONS.
- 32100.05 EXISTING ASPHALT PAVING.
- 32100.07 CONCRETE PAVING FLUSH WITH SURFACE OF ASPHALT PAVING THIS LOCATION.
- 32300.01 EXISTING STEEL PIPE BOLLARD.
- 32300.02 8" Ø STEEL PIPE BOLLARD FILLED WITH CONCRETE.
- 32300.03 4'-0" HIGH CORRUGATED METAL PANEL FENCE.
- 32300.05 STEEL PIPE SWING GATE. SIMILAR TO CITY OF ALBUQUERQUE STANDARD DETAIL DWG. 2251.
- 32900.01 GABION WALL. SEE LEGEND. SEE LANDSCAPING PLAN.

LEGEND

- EXISTING CMU BLOCK WALL. (GREY COLOR)
- EXISTING CHAIN LINK FENCE.
- EXISTING WIRE FENCE.
- EXISTING PROPERTY LINE.
- LIGHT POLE NOT TO EXCEED 25'
- LIGHT POLE NOT TO EXCEED 12'.
- STEP LIGHT WITHIN 24" CONCRETE CUBE BOLLARD.
- FIRE HYDRANT.
- 24" GABION WALL. HEIGHT VARIES FROM 1'-0" TO 4'-0" ABOVE GRADE.
- CONCRETE PAVING (SIDEWALKS, CURB AND GUTTER, ETC.)
- 8" THICK AGGREGATE BASE COURSE COMPACTED TO 95% MIN. OVER EXISTING GRADE COMPACTED TO 95% MIN. ENGINEERED TO SUPPORT FIRE APPARATUS EQUIPMENT / VEHICLES (75,000 LBS).



LEE GAMESKY ARCHITECTS P.C.
 2412 MILES ROAD SE
 ALBUQUERQUE, NM 87106
 505.842.8865 FAX 842.1693
 lee@gjanm.com

WESTGATE COMMUNITY CENTER
 10001 De Vargas Road SW, Albuquerque, New Mexico 87121

PROJECT ARCHITECT: LEE GAMESKY, AIA
 PROJECT #: []
 DATE: 30 NOVEMBER 2018

SITE DEVELOPMENT PLAN FOR BUILDING PERMIT
 DRB PROJECT NO.: []

ENLARGED SITE PLAN