



DEKKER  
PERICH  
SABATINI

SEAL  
FRED C. ARFMAN  
NEW MEX.  
09-26-2023  
PRO.

NUEVO ATRISCO  
7921 CENTRAL AVE NW  
Albuquerque, NM 87121

ISSUED FOR  
PERMIT

REVISIONS

△ Building 1 For Bldg. Permit: 09-26-2023

△

△

△

△

△

DRAWN BY

REVIEWED BY

DATE 09/26/2023

DPS PROJECT NO. 19-0059.002

I&A PROJECT NO. I&A 2470

DRAWING NAME

PAVING &  
DEMOLITION  
PLAN

SHEET NO.

CP101

IFC Plans 11/30/23

## GENERAL NOTES

- FIVE WORKING DAYS PRIOR TO ANY EXCAVATION, THE CONTRACTOR MUST CONTACT NEW MEXICO ONE CALL SYSTEM (505-260-1990) FOR LOCATION OF EXISTING UTILITIES.
- PRIOR TO CONSTRUCTION, THE CONTRACTOR SHALL EXCAVATE AND VERIFY THE HORIZONTAL AND VERTICAL LOCATIONS OF ALL OBSTRUCTIONS. SHOULD A CONFLICT EXIST, THE CONTRACTOR SHALL NOTIFY THE ENGINEER IMMEDIATELY SO THAT THE CONFLICT CAN BE RESOLVED WITH A MINIMUM AMOUNT OF DELAY.
- SEE ARCHITECTURAL PLANS FOR SITE LIGHT AND DETAILS. COORDINATE CONDUIT PLACEMENT PRIOR TO PAVING START
- SEE PAVING SECTIONS THIS SHEET. ARCHITECTURAL AS-501 FOR PAVING DETAILS.
- ANY STREET STRIPING ALTERED OR DESTROYED SHALL BE REPLACED WITH THERMO-PLASTIC REFLECTORIZED PAVEMENT MARKING BY CONTRACTOR TO THE SAME LOCATION AS EXISTING OR AS INDICATED BY THIS PLAN SET.
- REMOVAL OF EXISTING CURB & GUTTER AND SIDEWALKS SHALL BE TO THE NEAREST JOINT.
- OVERNIGHT PARKING OF CONSTRUCTION EQUIPMENT SHALL NOT OBSTRUCT DRIVEWAYS OR DESIGNATED TRAFFIC LANES. THE CONTRACTOR SHALL NOT STORE ANY EQUIPMENT OR MATERIAL WITHIN THE PUBLIC RIGHT-OF-WAY.
- CURB AND GUTTER, SIDEWALKS, AND DRIVE PADS SHALL MATCH THE LINE AND GRADE OF ABUTTING EXISTING AREAS AS SHOWN ON THE PLANS OR AS DIRECTED BY THE PROJECT ENGINEER.
- THE SUBGRADE PREP SHALL EXTEND ONE FOOT BEYOND THE FREE EDGE OF NEW CURB AND GUTTER AND SIDEWALK.
- CONTRACTOR TO TEST SUBGRADE R-VALUE PRIOR TO CONSTRUCTION. IN THE EVENT THE R-VALUE IS LESS THAN 50, REMOVE 2 FEET OF SUBGRADE MATERIAL AND IMPORT MATERIAL WITH R-VALUE GREATER THAN 50 OR CONTACT THE ENGINEER IMMEDIATELY SO THE PAVEMENT SECTION CAN BE MODIFIED.
- AT ALL PAVEMENT REMOVAL AND REPLACEMENTS, SAW-CUT EDGES SHALL BE STRAIGHT AND CLEAN, AND LONGITUDINAL JOINTS SHALL NOT BE PLACED WITHIN WHEEL PATHS. PATCHES SHALL BE REGULAR AND SQUARE OR RECTANGULAR, WITH FOUR STRAIGHT SIDES. FINISHED PAVEMENT SURFACE SHALL BE FLUSH WITH EXISTING PAVEMENT SURFACE, WITH NO SPLI-OVER OF ASPHALT OR TACK COAT. CARE MUST BE TAKEN TO AVOID DAMAGING THE INTEGRITY OR APPEARANCE OF SURROUNDING PAVEMENTS; IF DAMAGED, THE ENTIRE SURFACE PATCH MUST BE EXPANDED TO COVER DAMAGES.
- CONTRACTOR WILL ENSURE THE ASPHALT HAS A SMOOTH, UNIFORM EDGE WHEN REMOVING AND REPLACING CURB AND GUTTER. IF THE ASPHALT EDGE IS NOT SMOOTH AND UNIFORM, CONTRACTOR WILL SAW CUT AND REPLACE A ONE-FOOT STRIP OF ASPHALT ALONG THE FULL SECTION BEING REPLACED; REFER TO C.O.A. STANDARD DRAWING # 2465 WITH THE APPROPRIATE PAVING SECTION BASED ON ROADWAY CLASSIFICATION.
- NEW PAVEMENT SLOPE SHALL BE A MINIMUM OF 1.0% FOR CONCRETE AND 1.5% FOR ASPHALT UNLESS NOTED OTHERWISE.

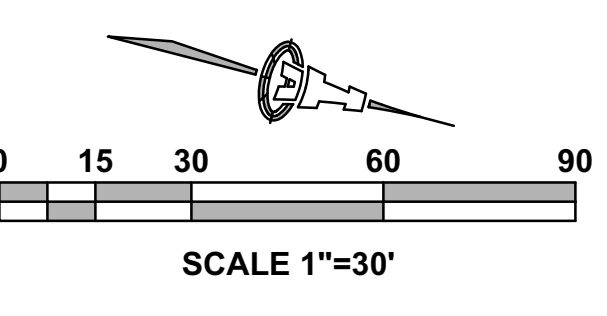
## LEGEND

- EXISTING CURB AND GUTTER
- PROPOSED CURB AND GUTTER
- LIGHT ASPHALT PAVING SECTION
- HEAVY ASPHALT PAVING SECTION
- PCC PAVING SECTION
- POST MOUNTED SIGN
- ASPHALT PAVING TO BE REMOVED
- FIRE LANE "NO PARKING FIRE LANE"  
4" WHITE LETTERS ON RED PAINT
- PROPERTY LINE

## DEMOLITION PLAN

### KEYED NOTES

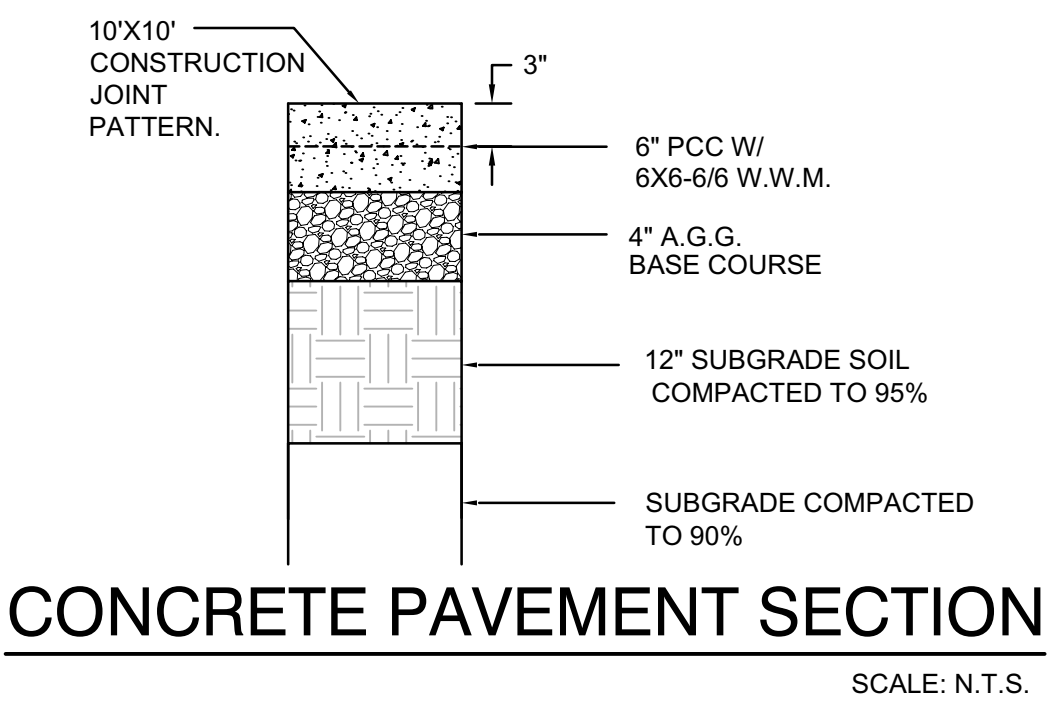
- DEMOLITION
- ASPHALT TO BE REMOVED.
  - PCC CURB & GUTTER TO BE REMOVED.
  - ASPHALT CURB TO BE REMOVED.
  - PCC SIDEWALK TO BE REMOVED.
  - PCC ADA RAMP TO BE REMOVED.
  - TREES/SHRUBS AND IRRIGATION TO BE REMOVED AND/OR RELOCATED.
  - REMOVE STREET LIGHT.
  - REMOVED, STOCKPILED OR RELOCATE STREET SIGNS.
  - PROTECT EXISTING FIRE HYDRANT DURING DEMO.



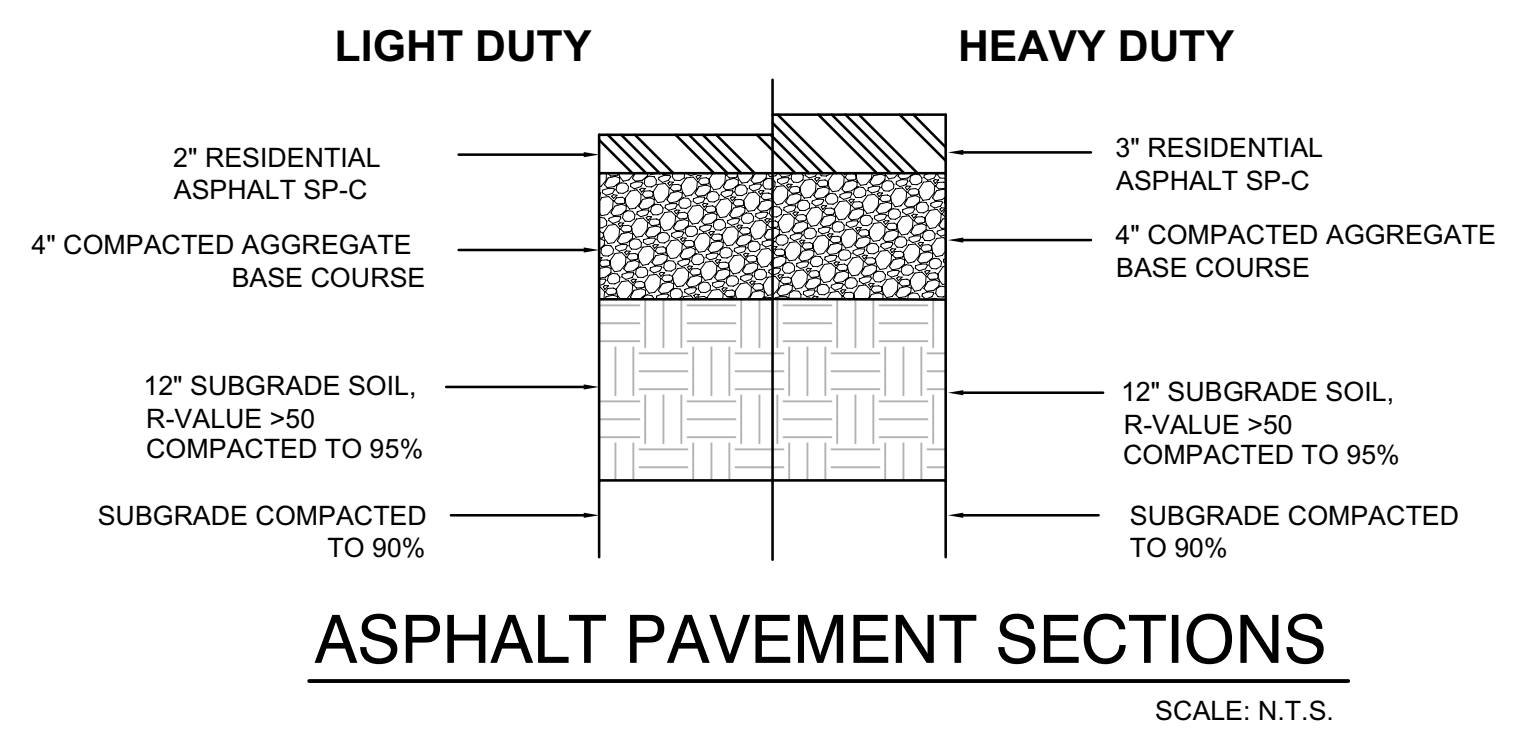
## PAVING PLAN

### KEYED NOTES

- PAVING
- CONCRETE MEDIAN CURB AND GUTTER. PER DETAIL SHEET CP-501.
  - ASPHALT TEMPORARY CURB. SEE DETAIL SHEET CP-501.
  - HEAVY DUTY ASPHALT PAVEMENT PER GEO-TECHNICAL REPORT. SEE SECTION THIS SHEET.
  - LIGHT DUTY ASPHALT PAVEMENT PER GEO-TECHNICAL REPORT. SEE SECTION THIS SHEET.
  - PORTLAND CEMENT CONCRETE (PCC) PAVEMENT WITH CONSTRUCTION (CJ) AND EXPANSION (EJ) JOINTS AS INDICATED. SEE SECTION THIS SHEET.
  - CONCRETE SIDEWALK. PER DETAIL SHEET CP-501. SIDEWALK WIDTH VARIES. SEE SITE PLAN.
  - SIDEWALK WITH TURNED DOWN EDGE PER DETAIL SHEET CP-501. WIDTH VARIES. SEE SITE PLAN.
  - ACCESSIBLE RAMP 'A'.
  - ACCESSIBLE RAMP 'B'.
  - CONTRACTOR TO VERIFY LOCATION OF EXISTING CURB, ASPHALT, AND CONCRETE PAVEMENT AND SIDEWALK TIE-IN LOCATIONS AND MATCH EXISTING WITH SMOOTH TRANSITION. NOTIFY ENGINEER OF ANY DISCREPANCIES.
  - ADJUST SEWER CLEANOUTS, WATER VALVES BOXES AND STORM INLETS TO FINAL GRADE.
  - ADA COMPLIANT ACCESSIBLE PARKING SPACES. PER DETAIL SHEET CP-501. MAXIMUM 2% SLOPE IN ANY DIRECTION. WITH 4" PERIMETER STRIPE AND 4" WIDE STRIPES AT 2' O.C. AND ACCESSIBLE SYMBOL IN BLUE TRAFFIC PAINT.
  - CONCRETE WHEEL STOP. SEE DETAIL SHEET CP-501.
  - FIRE LANE MARKING.



CONCRETE PAVEMENT SECTION  
SCALE: N.T.S.



ASPHALT PAVEMENT SECTIONS  
SCALE: N.T.S.

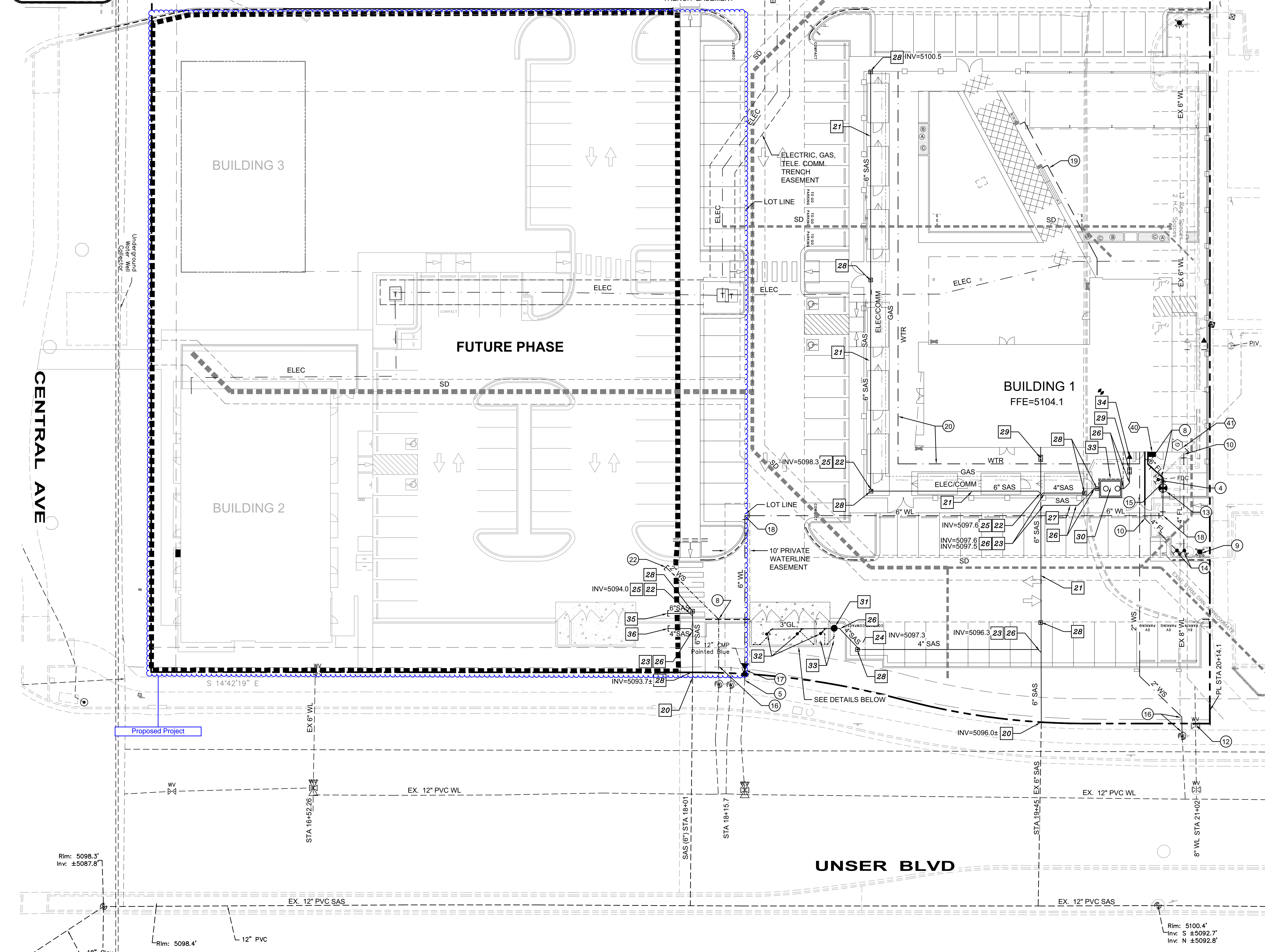
Isaacson &  
Arfman, Inc.  
Civil Engineering Consultants

128 Monroe Street NE  
Albuquerque, NM 87108  
505-268-8828 | www.iacivil.com





DEKKER  
PERICH  
SABATINI



### KEYED NOTES

#### WATER KEYED NOTES

1. REMOVE & RELOCATE EXISTING 8"x8" TEE.
2. REMOVE & RELOCATE EXISTING 8"x6" REDUCER.
3. NOT USED.
4. REMOVE AND RELOCATE EXISTING FDC.
5. REMOVE 6" CAP AND TEMP. RESTRAINT. CONNECT NEW 6" WATERLINE.
6. NOT USED.
7. 2" CAP.
8. 6" - 45° BEND. (LT=13)
9. EXISTING FIRE HYDRANT.
10. 4" - 45° BEND. (LT=6)
11. NOT USED.
12. EXISTING 8" GATE VALVE.
13. 6" POST INDICATOR VALVE (PIV). (LT=46)
14. FIRE DEPARTMENT CONNECTION (FDC).
15. 3" CONDUIT WITH PULL CORD FROM PIV TO FIRE RISER ROOM.
16. CONNECT NEW 2" SERVICE LINE TO EXISTING METER SETTING. VERIFY EXISTING METER SETTING, REPAIR NECESSARY.
17. EXISTING 6" GATE VALVE. CLEAN CMP & INSTALL VALVE BOX LID & PCC PAD.
18. 6" - 90° BEND. (LT=20)
19. 1" WATER LINE TO WATER FEATURE. SEE PLUMBING PLANS.
20. WATER LINE TO FOOD TRUCKS. SEE PLUMBING PLANS.
21. NOT USED.
22. 6" CAP. (LT=46)
23. 2" CAP.

#### SEWER KEYED NOTES

20. VERIFY SAS SERVICE. REMOVE 6" PLUG AND CONNECT NEW 6" SEWER LINE.
21. 6" SANITARY SEWER LINE AT 1% MIN. SLOPE.
22. 6"x6" WYE/TEE.
23. 6"x4" WYE/TEE.
24. 4"x4" WYE/TEE.
25. 6" - 45° BEND.
26. 4" - 45° BEND.
27. 4" GREASE LINE AT 1% MIN. SLOPE.
28. SANITARY SEWER SINGLE CLEAN OUT. SEE DETAIL THIS SHEET.
29. SANITARY SEWER DOUBLE CLEAN OUT. SEE DETAIL THIS SHEET.
30. 1500 GAL. GREASE INTERCEPTOR.
31. TRAPZILLA MODEL TZ-160 ECA GREASE INTERCEPTOR WITH 4"x3" REDUCER AT OUTLET.
32. 3" DUMPSTER FLOOR DRAIN WITH "P" TRAP.
33. 1 1/2" GREASE INTERCEPTOR VENT LINE WITH ALL REQUIRED FITTINGS TO BE VENTED TO INSIDE CORNER OF TRASH ENCLOSURE WALL AS SHOWN.
34. 4" x 3" REDUCER.
35. 6" PLUG.
36. 4" PLUG.

#### DRY UTILITY KEYED NOTES

40. ELECTRICAL SERVICE (PANEL & METER).
41. GAS METER.

### GENERAL NOTES

- A. EXISTING UTILITY LINES ARE SHOWN IN AN APPROXIMATE MANNER ONLY AND MAY BE INCOMPLETE OR OBSOLETE. SUCH LINES MAY OR MAY NOT EXIST WHERE SHOWN OR NOT SHOWN. ALL UTILITIES SHOULD BE FIELD VERIFIED AND LOCATED BY THE CONTRACTOR PRIOR TO COMMENCEMENT OF ANY CONSTRUCTION. THE CONTRACTOR IS FULLY RESPONSIBLE FOR ANY AND ALL DAMAGE CAUSED BY ITS FAILURE TO LOCATE, IDENTIFY AND PRESERVE ANY AND ALL EXISTING UTILITIES, PIPELINES, AND UNDERGROUND UTILITY LINES.
- B. CONTRACTOR SHALL NOT USE VIBRATORY COMPACTION EQUIPMENT OR HEAVY VEHICLES OVER EXISTING UTILITIES.
- C. SITE STORM DRAIN, ELECTRIC LINES & TRANSFORMERS AND GAS LINES ARE SHOWN FOR GENERAL INFORMATION ONLY TO PROVIDE AN OVERVIEW OF SITE UTILITIES AND POTENTIAL CONFLICTS. SEE MECHANICAL PLANS FOR GAS LINE SIZING. SEE CG-101 FOR STORM DRAIN DESIGN.
- D. ALL WATER FITTINGS SHALL HAVE JOINT RESTRAINTS (LT). SEE RESTRAINED JOINT CRITERIA NOTES THIS SHEET. (LT) LENGTH SHOWN ON KEYED NOTES.
- E. ALL ABOVE GROUND UTILITY EQUIPMENT AND FITTINGS SHALL BE PAINTED IN COLORS TO MATCH BUILDING COLORS.
- F. WATERLINES 4" IN DIAMETER OR LARGER SHALL BE PVC PIPE MEETING AWWA C900 DR-18 REQUIREMENTS.
- G. SANITARY SEWER LINE MATERIALS SHALL BE PVC SDR-35 PIPE.
- H. THE GREASE INTERCEPTOR: NO FITTING, FIXTURE AND PIPING CONNECTION, APPLIANCE, DEVICE, OR METHOD OF INSTALLATION THAT RETARDS THE FLOW OF WATER, WASTES, SEWAGE, OR AIR IN THE DRAINAGE OR VENTING SYSTEMS. IN AN AMOUNT EXCEEDING THE NORMAL FRICTIONAL RESISTANCE TO FLOW, SHALL BE USED UNLESS IT IS INDICATED AS ACCEPTABLE IN THIS CODE OR IS APPROVED IN ACCORDANCE WITH SECTION 301.2 OF THIS CODE. 2021 UPC-310.5
- I. THE GREASE INTERCEPTOR(S) AT DUMPSTER AREAS REQUIRES A VENT. INTERCEPTORS (CLARIFIERS) SHALL BE SO DESIGNED THAT THEY WILL NOT BECOME AIR-BOUND WHERE CLOSED COVERS ARE USED. EACH INTERCEPTOR (CLARIFIER) SHALL BE PROPERLY VENTED. 2021 UPC-1009.4
- J. DUMPSTER FLOOR DRAINS: FLOOR DRAINS AT THE DUMPSTER MUST BE VENTED. EACH TRAP SHALL BE VENTED. 2021 UPC-901.2

### RESTRAINED JOINT CRITERIA FOR WATERLINE FITTINGS

1. ALL MECHANICAL JOINTS SHALL BE RESTRAINED AT THE FITTINGS PER KEYED NOTES THIS SHEET.
2. THE CONTRACTOR SHALL PROVIDE A MINIMUM PIPE LENGTH OF 20 LF FROM ALL MECHANICAL JOINTS. ALL PIPE JOINTS WITHIN 20 LF OF A MECHANICAL JOINT SHALL BE RESTRAINED AT THE CONTRACTOR'S EXPENSE.
3. THE CONTRACTOR SHALL RESTRAIN ALL PIPE JOINTS IN THE SPECIFIED DISTANCE LISTED IN THE KEYED NOTES.
4. THE CONTRACTOR SHALL RESTRAIN ALL FIRE HYDRANT JOINTS FROM THE TEE ON THE MAIN TO THE FIRE HYDRANT FLANGE.

DEPTH OF BURY: 3.0 FT. MINIMUM  
FACTOR OF SAFETY: 1.5  
MATERIAL: PVC  
SOIL TYPE: GMSM - SILTY GRAVELS AND SILTY SANDS, GRAVEL-SAND-SILT MIXTURES.  
TEST PRESSURE: 150 PSI  
TRENCH TYPE 4: PIPE BEDDED IN SAND, GRAVEL, OR CRUSHED STONE TO DEPTH OF 1/8 PIPE DIAMETER, 4 INCH MINIMUM; BACKFILL COMPACTED TO TOP OF PIPE.

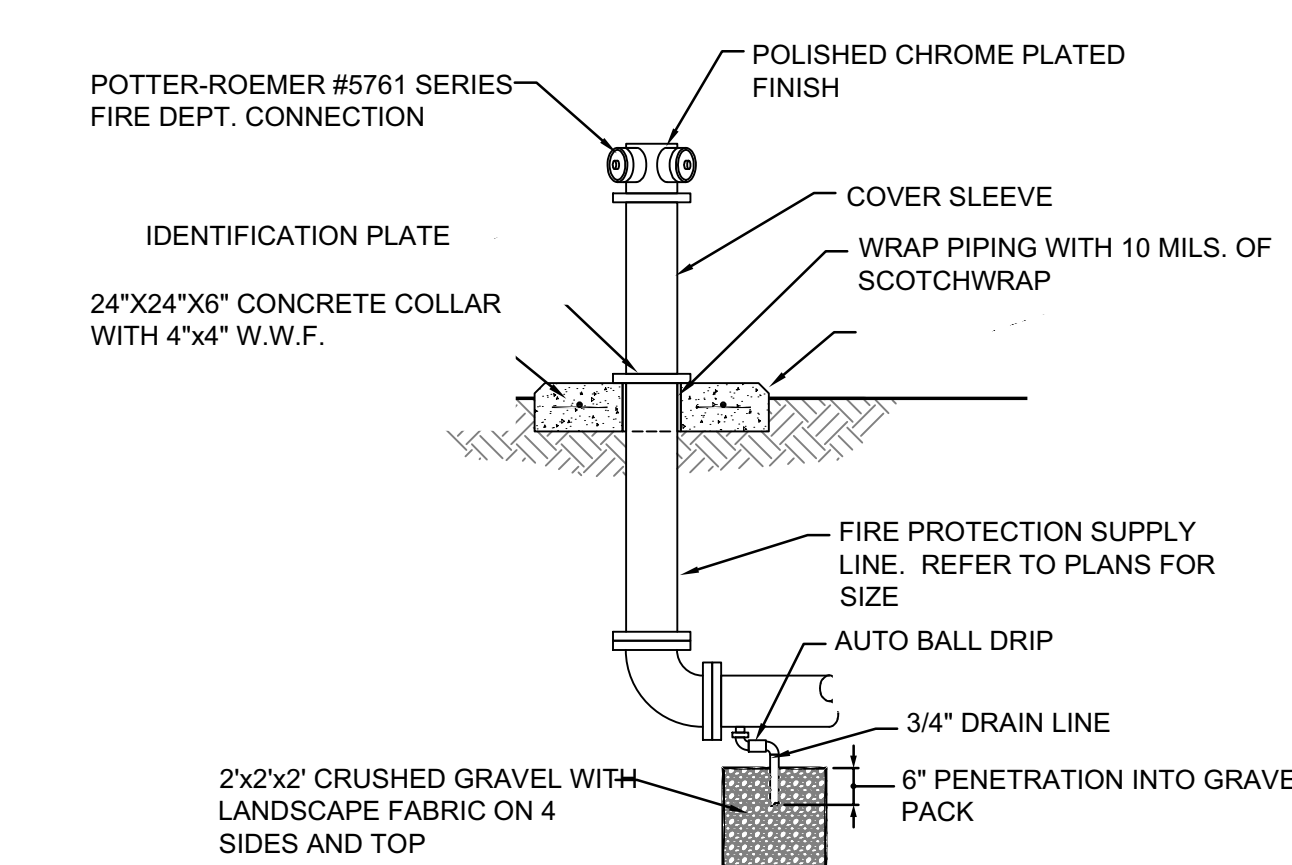
DIFFERENT CRITERIA, E.G., GREATER DEPTH OF BURY, ETC., WILL REQUIRE DIFFERENT RESTRAINED LENGTHS. THESE MUST BE CALCULATED BY A QUALIFIED PROFESSIONAL ENGINEER AND APPROVED BY ABCWUA.

### LEGEND

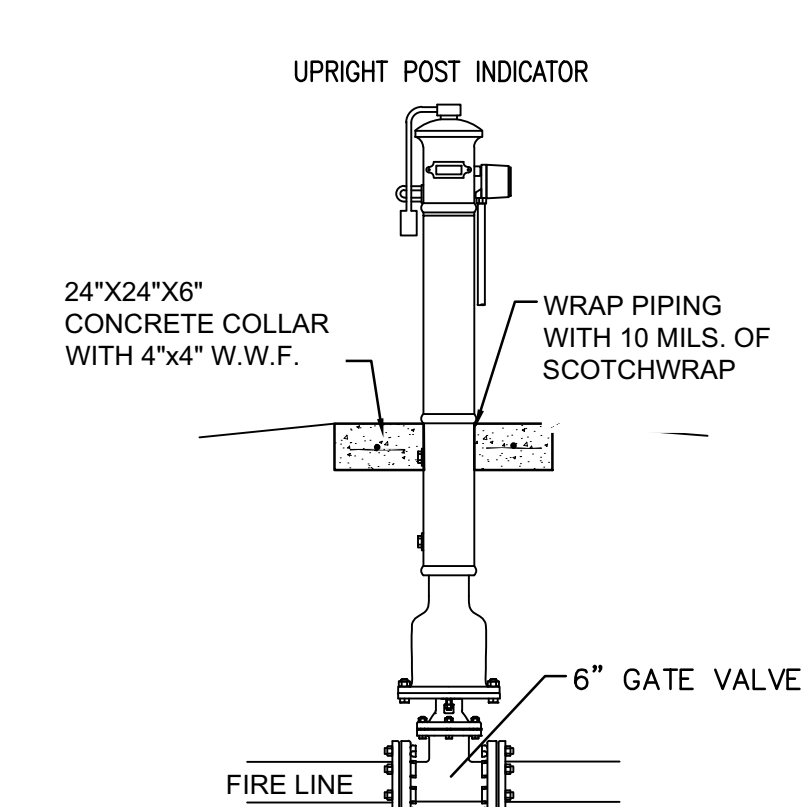
- W — EXISTING WATERLINE
- F — EXISTING FIRE HYDANT
- V — EXISTING WATER VALVE
- S — EXISTING SEWER LINE
- M — EXISTING SEWER MANHOLE
- — NEW WATERLINE
- — NEW WATER SERVICE
- — NEW FIRE HYDANT
- — NEW WATER VALVE
- — NEW FDC
- — NEW PIV
- — NEW SEWER LINE & CLEAN OUTS
- — NEW GREASE LINE
- — NEW 2" VENT LINE

PRIOR TO SANITARY SEWER INSTALLATION, CONTRACTOR SHALL VERIFY INVERT ELEVATION OF EXISTING 6" SANITARY SEWER LINES AT CONNECTION POINTS. IF ELEVATIONS ARE HIGHER THAN SHOWN CONTACT DESIGN ENGINEER. IF ELEVATIONS ARE LOWER THAN SHOWN CONTRACTOR TO ADJUST SLOPE ONSITE TO BE STEEPER THAN DESIGNED.

INSTALLATION OF FIRE LINES, WATER SERVICES AND SEWER SERVICE WITHIN PUBLIC RIGHT OF WAY OR PUBLIC WATER AND SEWER EASEMENTS ARE TO BE CONSTRUCTED UNDER A CITY OF ALBUQUERQUE / ABCWUA WORK ORDER.



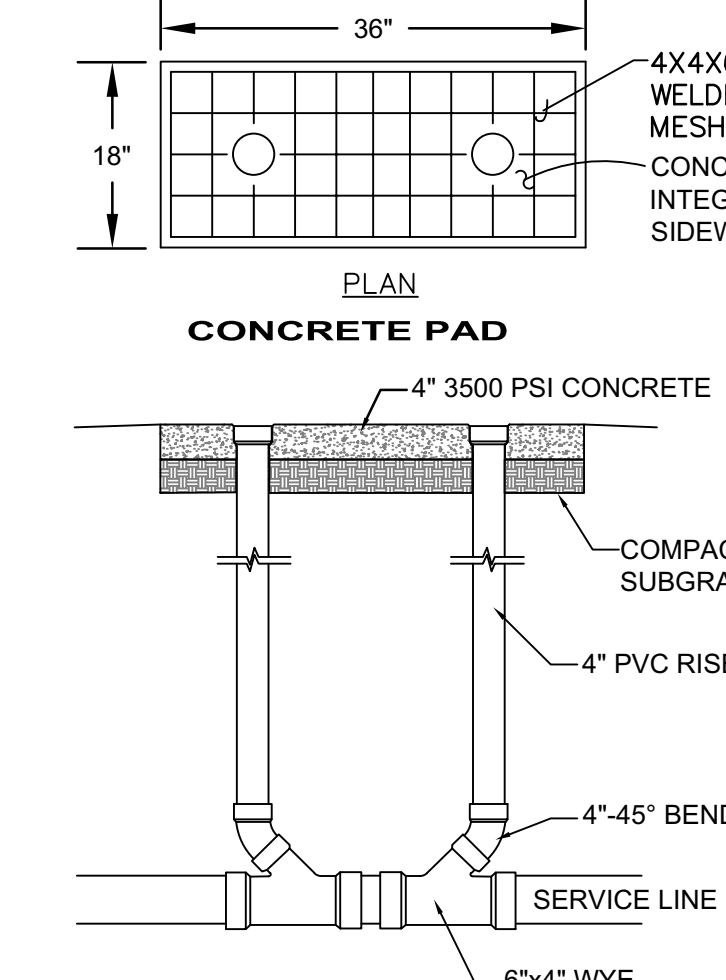
FREE-STANDING FIRE DEPARTMENT CONNECTION DETAIL  
NTS



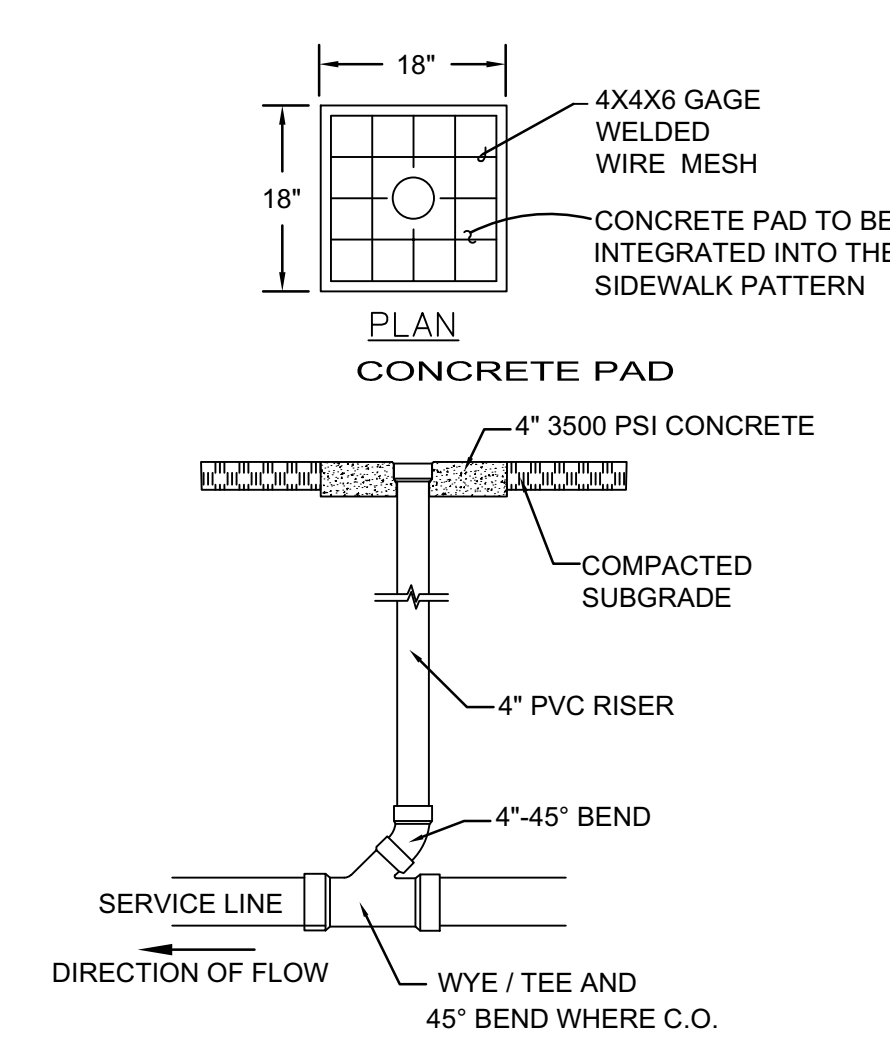
POST INDICATOR VALVE  
NTS

### DUMPSTER GI PLUMBING

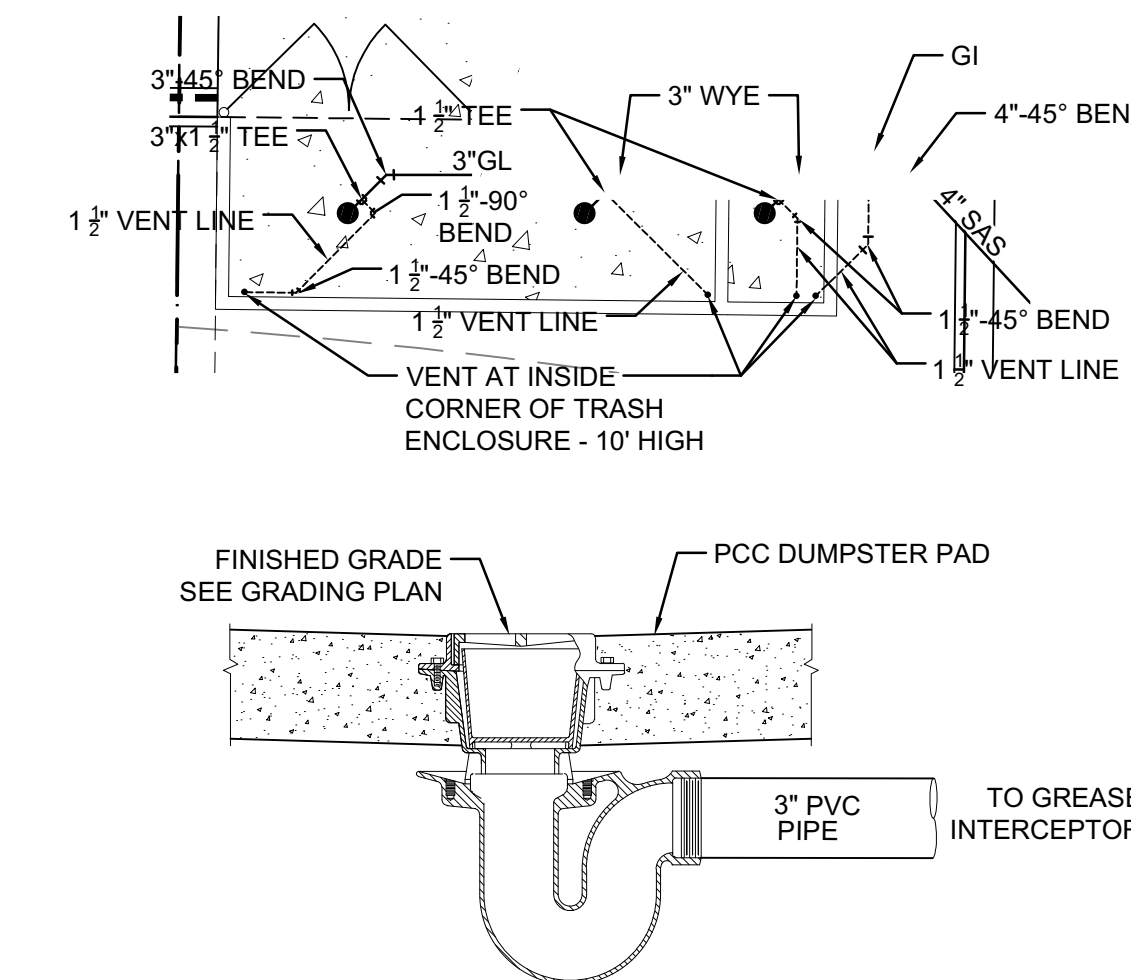
1" = 10'



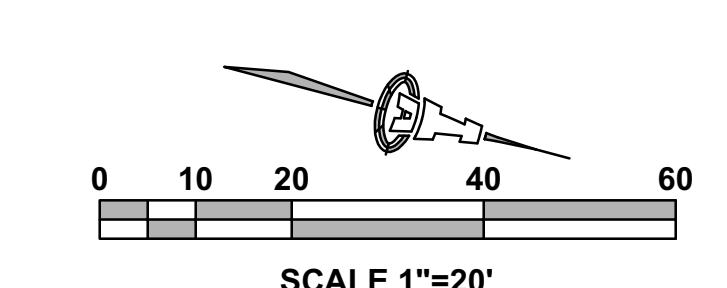
DOUBLE CLEANOUT  
NTS



SINGLE CLEANOUT DETAIL  
NTS



DUMPSTER FLOOR DRAIN WITH TRAP  
NTS



Isaacson & Arfman, Inc.  
Civil Engineering Consultants  
128 Monroe Street NE  
Albuquerque, NM 87108  
505-268-8828 | www.iacivil.com

### ISSUED FOR PERMIT

REVISIONS  
△ PERMIT REVISIONS 05-03-2023  
△  
△  
△  
△  
△  
△  
DRAWN BY  
REVIEWED BY  
DATE 09/26/2023  
DPS PROJECT NO. 19-0059.002  
I&A PROJECT NO. I&A 2470  
DRAWING NAME

### SITE UTILITY PLAN

SHEET NO.

CU101

IFC Plans 11/30/23



