

**Lumark**

Catalog #	#PRV-A60-D-UNV-T3-SA-BZ	Type	"S1"
Project	NUEVO ATRISCO	Date	
Comments	SITE LIGHTING	Prepared by	ACE
			08/16/18

**DESCRIPTION**  
The Prevail LED area, site luminaire combines optical performance, energy efficiency and long term reliability in an advanced, patent pending modern design. Utilizing the latest LED technology, the Prevail luminaire delivers unparalleled uniformity resulting in greater pole spacing. A versatile mount standard arm facilitates ease of installation for both retrofit and new installations. With energy savings greater than 82%, the Prevail fixture replaces 150-450W metal halide fixtures in general area lighting applications such as parking lots, walkways, roadways and building areas.

**SPECIFICATION FEATURES**  
**Construction**  
Construction is comprised of a heavy-duty, single-piece die-cast aluminum housing. The LED drivers are mounted in direct contact with the casting to promote low operating temperature and long life. The die-cast aluminum door is hinged to provide easy access to the driver if replacement is required. A one-piece silicone gasket seals the door to the fixture housing. The optics is mounted on a versatile, aluminum plate that dissipates heat from the LEDs resulting in longer life of the fixture. The fixture is IP68 and 3G vibration rated (ANSI C136.31) to insure strength of construction and longevity in the selected application.

**Optics**  
Precision molded, high efficiency optics are precisely designed to shape the distribution, maximizing efficiency and application spacing. Available in Type II, III, IV and V distributions with lumen packages ranging from 5,100 to 18,900 nominal lumens. Light engine configurations consist of 1 or 2 high-efficiency LEDs mounted to metal-core circuit boards to maximize heat dissipation and promote long life (up to 150,000 hours at 25°C) per IESNA TM-21. For the ultimate level of spill light control, an optional house side shield accessory can be field or factory installed.

**Electrical**  
LED drivers are mounted to the fixture for optimal heat sinking and ease of maintenance. Thermal management incorporates both conduction and convection to transfer heat rapidly away from the LED source for optimal efficiency and light output. Class 1 electronic drivers have a power factor >90%, THD <20%, and an expected life of 105,000 hours with <1% failure rate. Available in 120-277V 50/60Hz, 347V 60Hz or 480V 60Hz operation. 480V is compatible for use with 480V Wye systems only. 10k/110 kA surge protection standard. 0-10V dimming driver is standard with leads external to the fixture. Suitable for ambient temperatures from -40°C to 40°C. Optional 50°C HA (high ambient) available. Standard NEMA 3-PIN twistlock photocell receptacle and NEMA 7-PIN twistlock photocell receptacles are available as options.

**Mounting**  
Standard pole mount arm is bolted directly to the pole and the fixture slides onto the arm and locks in place with a bolt facilitating quick and easy installation. The versatile, patented, standard mount arm accommodates multiple drill patterns ranging from 1-1/2" to 4-7/8". Removal of the door on the standard mounting arm enables wiring of the fixture without having to access the driver compartment. A knock-out on the standard mounting arm enables round pole mounting. Wall mount and mast arm mounting options are available. Mast arm adapter fits 2-3/8" O.D. tenon.

**Finish**  
Housing and cast parts finished in five-stage super TGIC polyester powder coat paint, 2.5 mil nominal thickness for superior protection against fade and wear. Standard color is bronze. Additional colors available in white, grey, black, dark platinum and graphite metallic.

**Warranty**  
Five-year warranty.

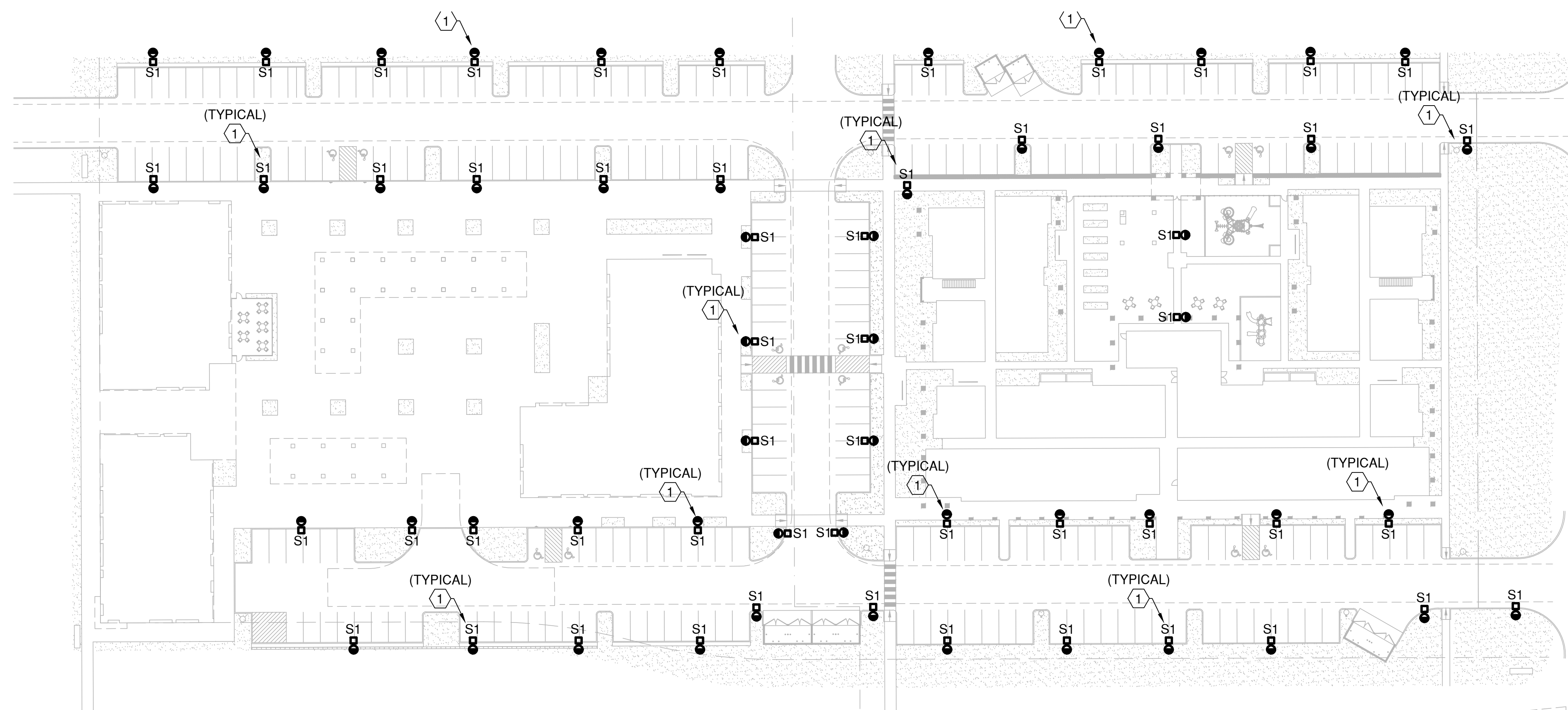
**CERTIFICATION DATA**  
UL and cUL Wet Location Listed (Type III)  
3G Vibration Rated (ANSI C136.31)  
DesignLights Consortium® Qualified®

**ENERGY DATA**  
Electronic LED Driver  
0.9 Power Factor  
<20% Total Harmonic Distortion  
130-277V/50 and 60Hz  
347V/60Hz, 480V/60Hz  
-40°C Minimum Temperature Rating  
+40°C Ambient Temperature Rating

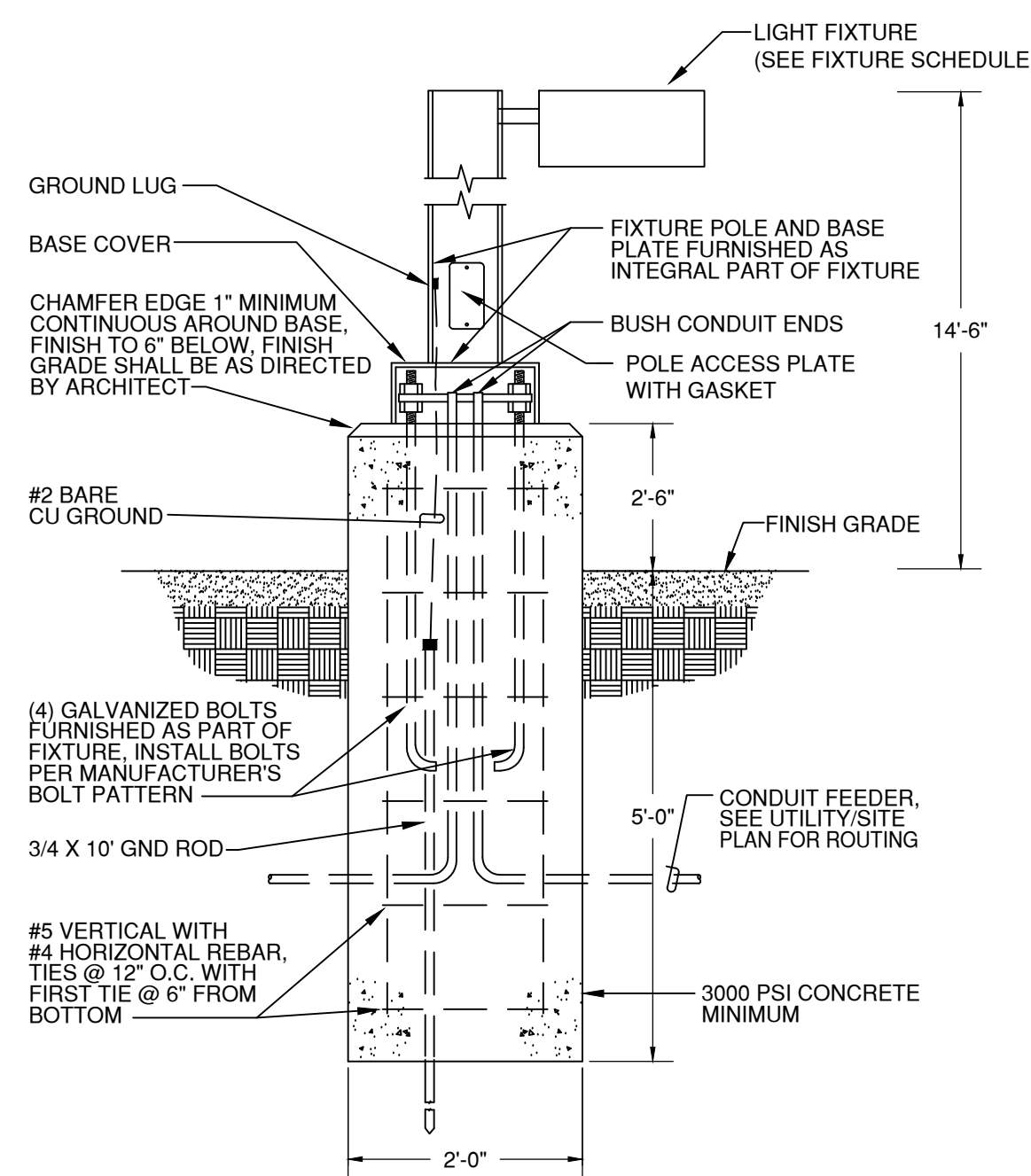
**EPA**  
Effective Projected Area (Sq. Ft.): 0.75

**SHIPPING DATA**  
Approximate Net Weight:  
20 lbs. (9.09 kg.)

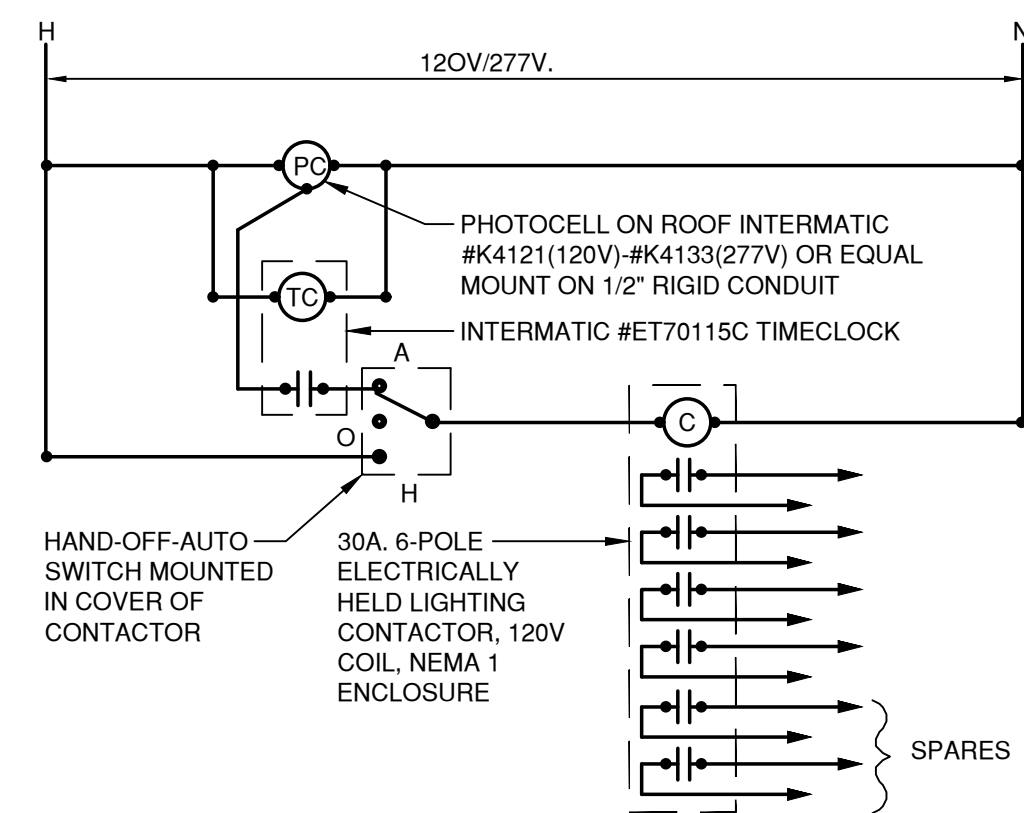
**ISD**  
June 19, 2018 2:34 PM



**A2 ELECTRICAL SITE PLAN**  
1" = 40'-0"



**POLE BASE DETAIL FOR PARKING LUMINAIRES**  
NO SCALE



**EXTERIOR LIGHTING CONTROL DIAGRAM**  
SCALE: N.T.S.

**FIXTURE SCHEDULE**

TYPE	MANUFACTURER	CATALOG NUMBER	DESCRIPTION/ LOCATION	LAMPS			MOUNTING INSTRUCTIONS	REMARKS
				TYPE	WATTS	LUMENS		
S1	LUMARK	PRV-A60-D-UNV-T3-SA-BZ	LED SITE LUMINAIRE TYPE III DISTRIBUTION ON 12' POLE WITH DARK BRONZE FINISH	LED	163	18992	12' POLE - SEE DETAIL THIS SHEET	

**GENERAL SHEET NOTES**

- SITE LIGHTING POLE AND LUMINAIRE SHALL COMPLY WITH NEW MEXICO DARK SKIES ENFORCEMENT ACT AND THE CITY OF ALBUQUERQUE LIGHTING ORDINANCE.
- PARKING LOTS SHALL BE ILLUMINATED TO 1 FOOTCANDLE AVERAGE MAINTAINED AND SHALL NOT EXCEED 4 FOOTCANDLES AVERAGE MAINTAINED.
- SITE LIGHTING SHALL BE PEDESTRIAN STYLE AND SHALL NOT EXCEED 15' IN HEIGHT FROM THE GROUND LEVEL THE TOP OF THE LUMINAIRE.

**REFERENCE KEYNOTES**

- SITE LIGHTING POLE AND LUMINAIRE. REFER TO THE FIXTURE SCHEDULE AND MOUNTING DETAIL THIS SHEET.

REVISIONS  
▲  
▲  
▲  
▲

DRAWN BY  
REVIEWED BY  
DATE 08-17-2018  
PROJECT NO. 18-0087  
DRAWING NAME  
**SITE LIGHTING PLAN**

SHEET NO.  
**ES101**  
OF

NUEVO ATRISCO  
7909 CENTRAL AVE, NW  
ALBUQUERQUE, NM 87121